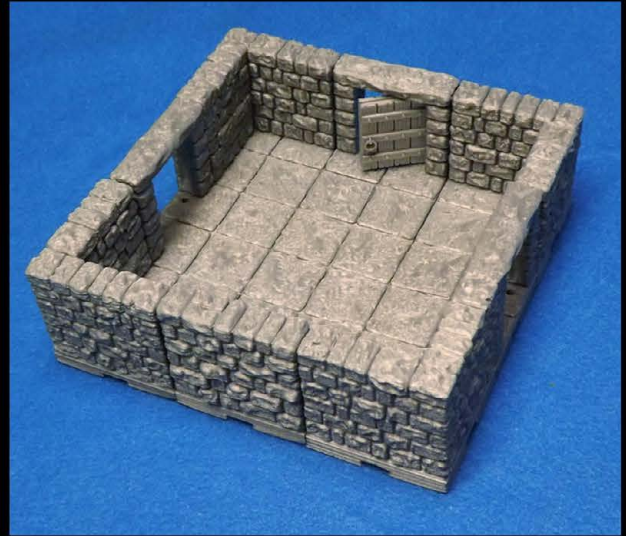
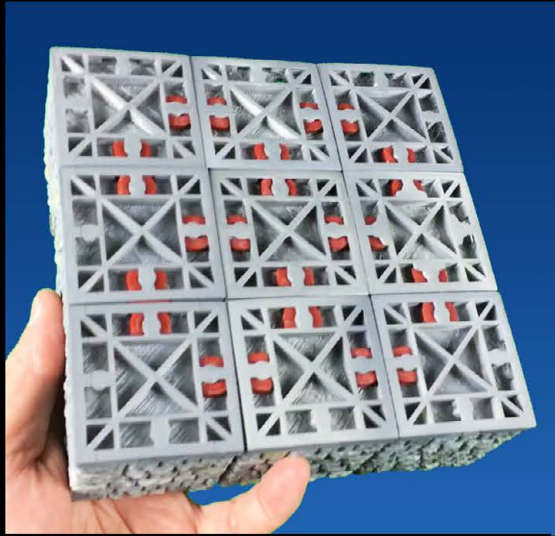


DRAGONLOCK

ULTIMATE



DRAGONBITE™
COMPATIBLE

Miniatures by www.reapermini.com

CAVERNS STARTER SET

Copyright ©2016 Fat Dragon Games. All rights reserved. www.fatdragongames.com



DRAGONLOCK

Getting Started

Welcome to the DRAGONLOCK: Ultimate™ terrain system. This instruction manual will outline some basic materials you will need for 3D printing these models, specific printing information for the models in this set, and links to additional resources.

For more information on getting started with 3D printing, help with choosing a printer, settings for many popular printers, troubleshooting, and more; please visit our 3D Printer forums:

<http://fatdragongames.proboards.com/board/21/3d-printing-dragonlock-terrain>

For painting tutorials on these and other models in the DRAGONLOCK: Ultimate™ product line, please visit our Youtube channel:

<https://www.youtube.com/channel/UC5Lbnd97HV3rU98gcwHklzQ>

Basic Tools and Materials



For gluing models with multiple pieces together, we have found that Gorilla Glue works great (especially the 'gel' type.)

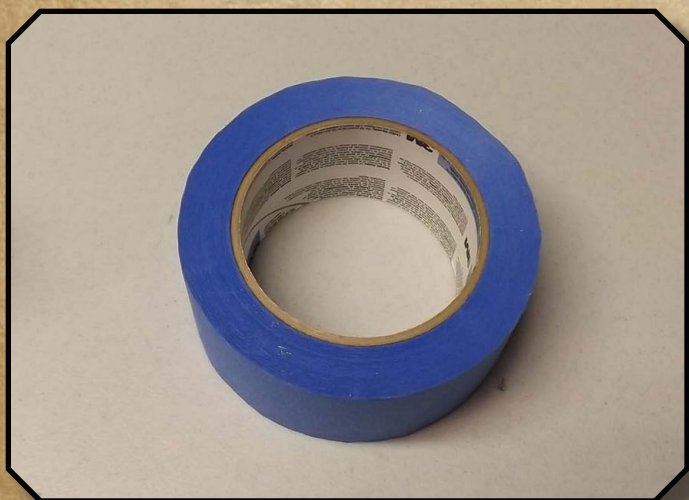


While not necessary, it helps to have a pair of small tweezers on hand. You'll find yourself using them often to pull odd strands of plastic off the model, getting small bits of plastic out of the printer, etc.

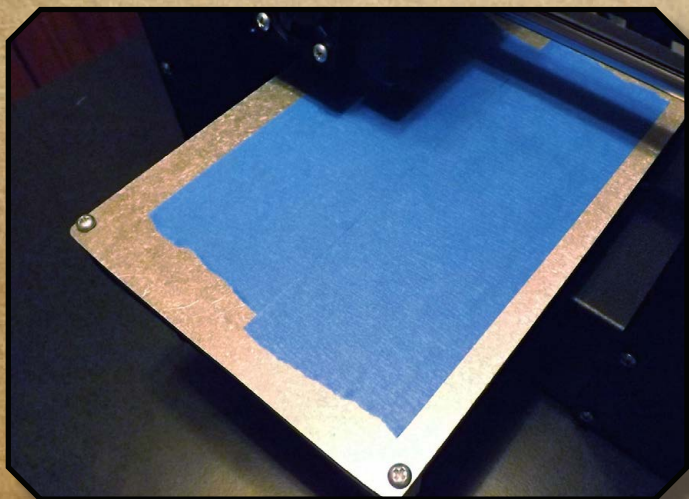
DRAGONLOCK



Absolutely essential is a small metal spatula to help remove models from your build plate. We've found that ones like this from art supply aisles at craft stores work great and should only cost you a few dollars.



When printing PLA on a non-heated build plate, applying blue painter tape to your build-plate works great to help the plastic adhere.



To make your print stick as well as possible, you can wipe off newly applied tape with a paper towel that has a little rubbing alcohol on it (the tape has a wax coating on the back that sometimes inhibits the plastic from properly sticking to it).

DRAGONLOCK

General printing tips for DRAGONLOCK: Ultimate™ models

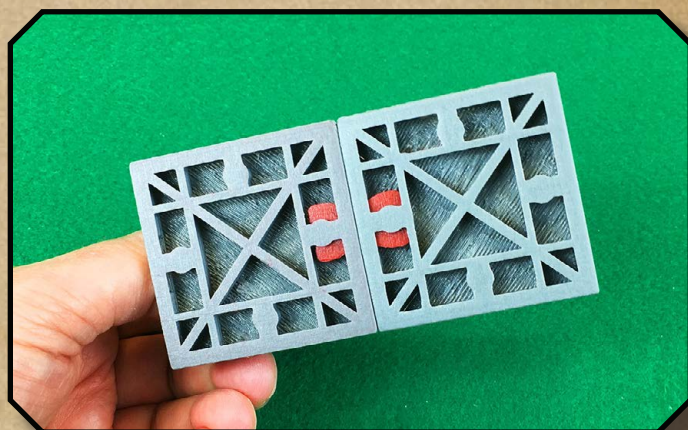
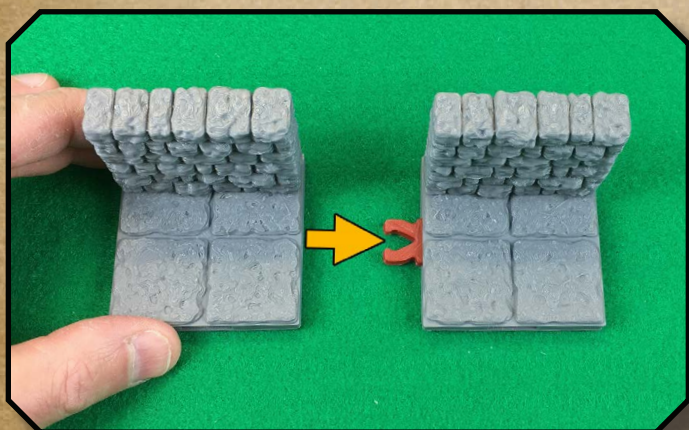
With the wide variety of printers and filaments on the market, it isn't possible for us to list printer settings that will work with multiple machines. Please visit the Fat Dragon Games forums for printer-specific tips and information:

<http://fatdragongames.proboards.com/board/21/3d-printing-dragonlock-terrain>

Using the DRAGONBITE™ clips



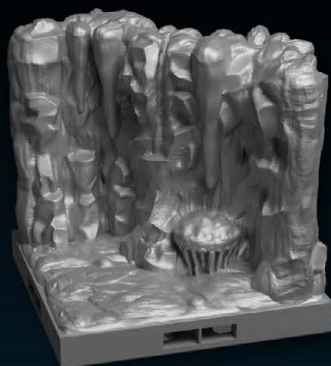
Before inserting a Dragonbite™ clip, you must first remove the printing support present in each slot on all four sides of every model. We recommend using needle-nose pliers to gently twist the support out of place (always wear eye protection when using tools.) Clips can be printed with 0% infill, but 15-20% is better.



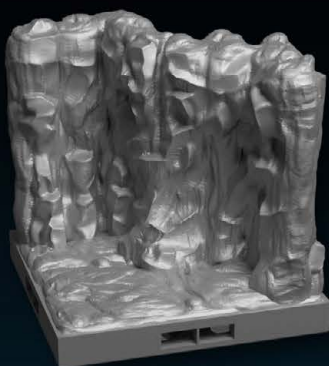
To connect DRAGONLOCK™ Ultimate models together, simply insert a Dragonbite™ clip into the slot of one model, then slide the adjoining model into the opposite side. Three sizes of Dragonbite™ clips are provided (large, medium, and small.) We recommend trying the medium clip first. The clips will work easily after using them a few times.

DRAGONLOCK

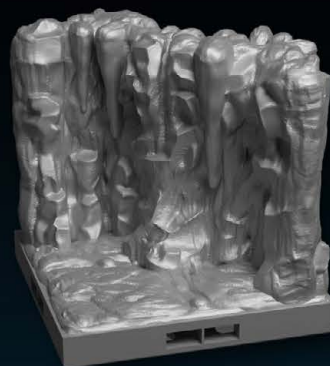
Cave Corner 1A



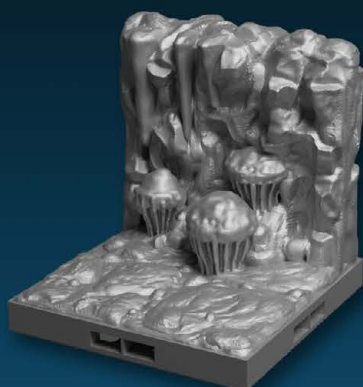
Cave Corner 1B



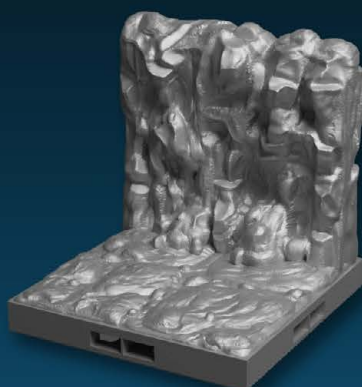
Cave Corner 1C



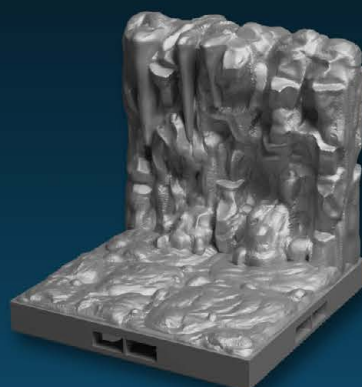
Cave Wall 1A



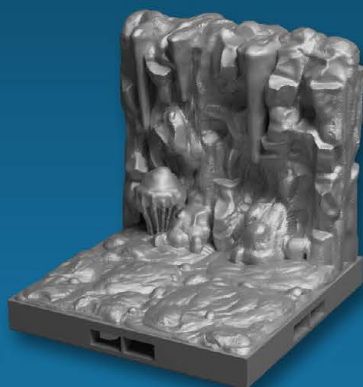
Cave Wall 1B



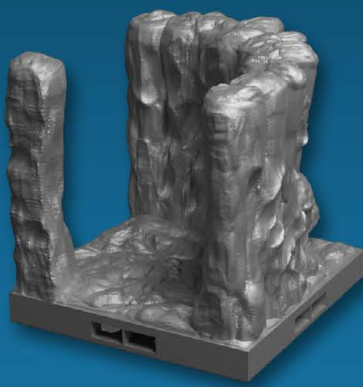
Cave Wall 1C



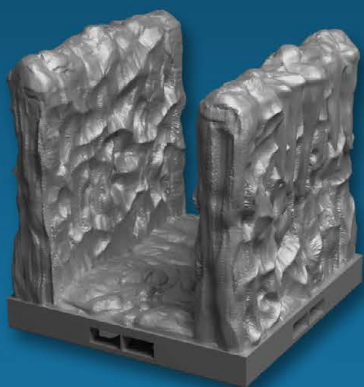
Cave Wall 1D



Narrow Corner



Narrow Corridor

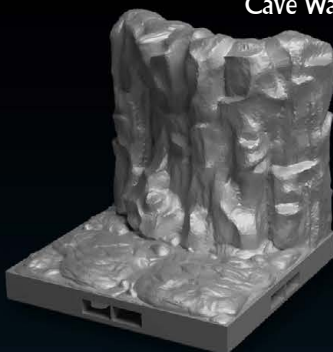


DRAGONLOCK

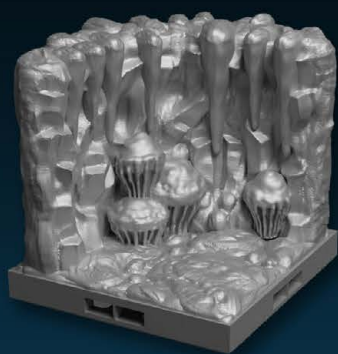
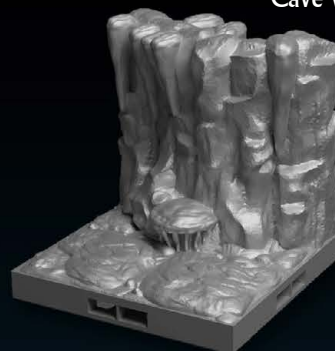
Cave Wall 2A



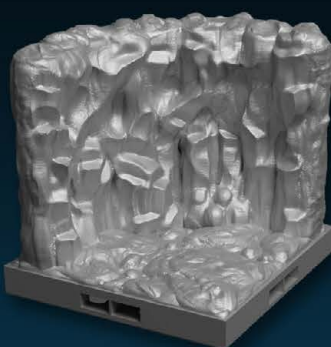
Cave Wall 2B



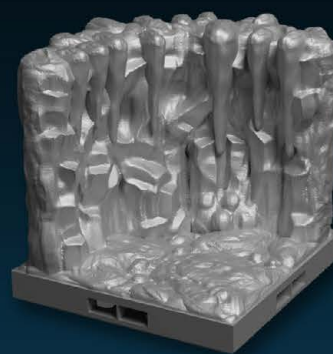
Cave Wall 2C



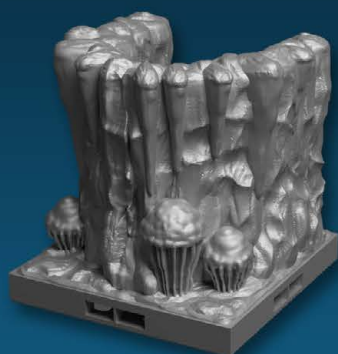
Cave Corner 2A



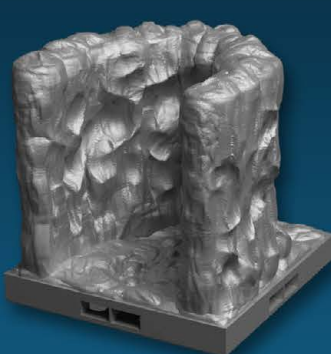
Cave Corner 2B



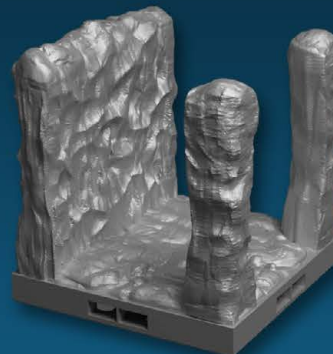
Cave Corner 2C



Narrow End A



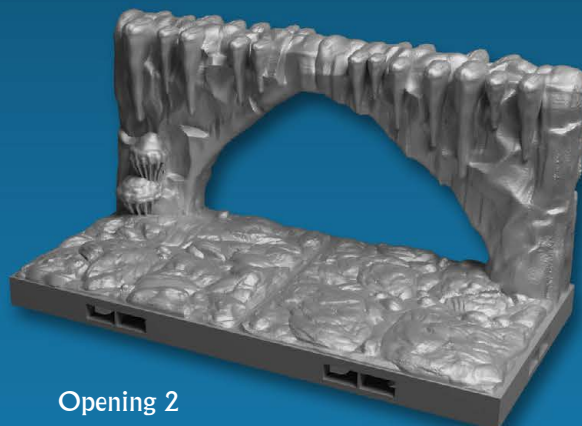
Narrow End B



Narrow 'T'



Opening 1



Opening 2

DRAGONLOCK

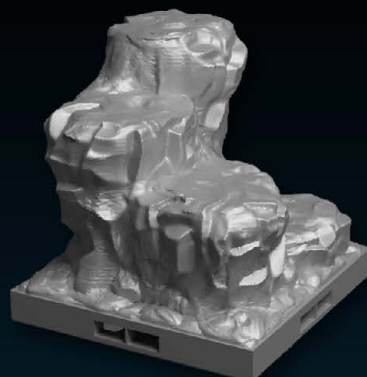
Giant Stalagmite



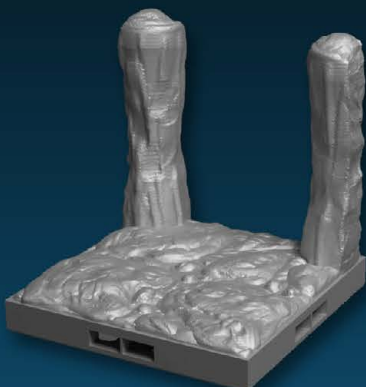
Pillar



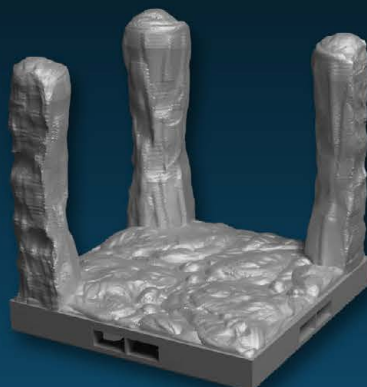
Stairs



Post 2



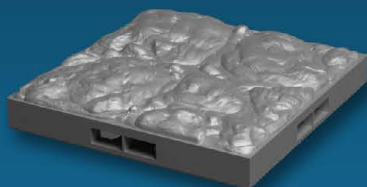
Post 3



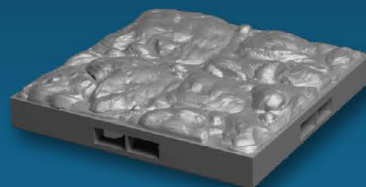
Post 1



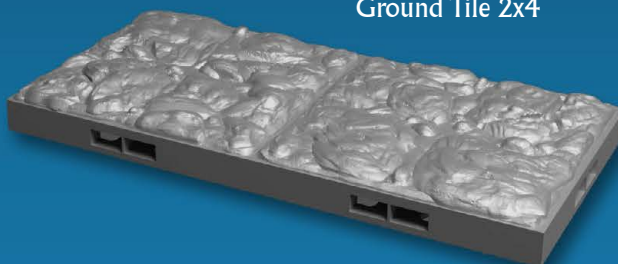
Ground Tile 2x2A



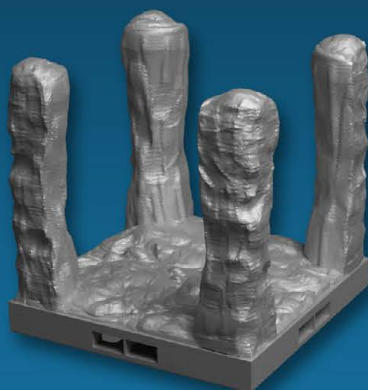
Ground Tile 2x2B



Ground Tile 2x4



Post 4



DRAGONLOCK

Stalagmite A



Stalagmite B



Stalagmite C



Stalagmite D



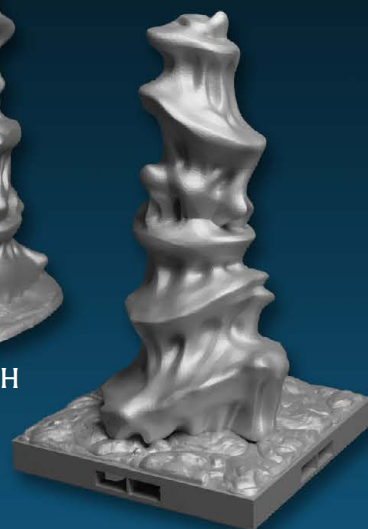
Stalagmite E



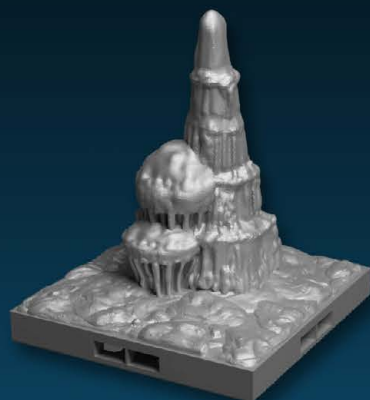
Stalagmite G



Stalagmite I



Stalagmite F



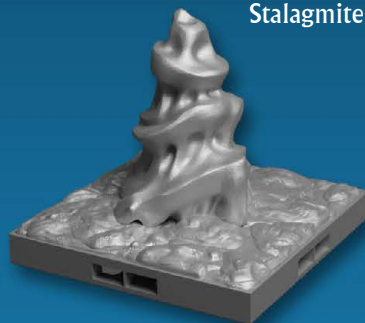
Stalagmite H



Stalagmite J



Stalagmite K



Stalagmite L





Printing info:

Filament:

- We recommend using PLA (we use Protoparadigm and Hatchbox in the FDG office)

Layer Height:

- All clips and wall models: 150 micron/.15mm recommended (200 micron/.2mm works great as well)

Top/Bottom layers:

- 6 layers or .9mm

Infill:

- 0% for all models except the four 'post' models, the narrow 'T' and narrow corner models, print these at 15-20% infill.

Rafts & Brim:

- None