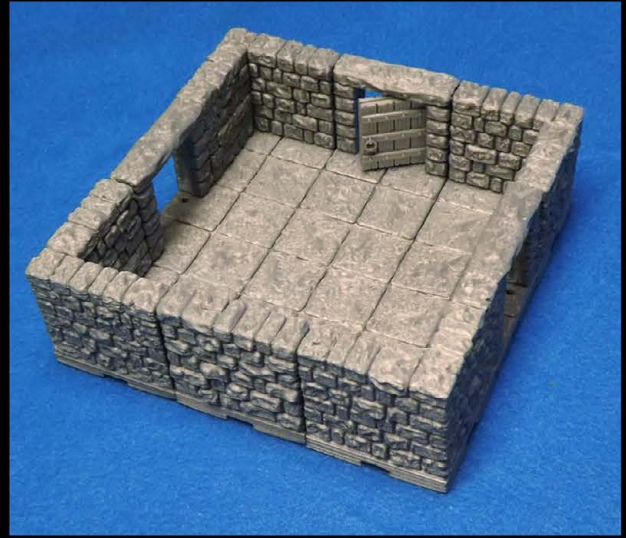
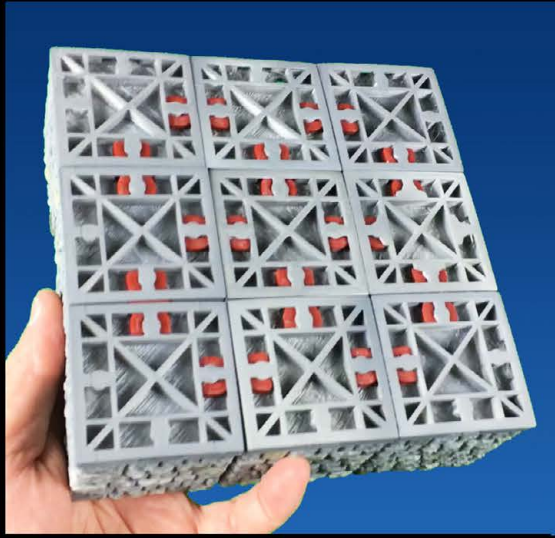


DRAGONLOCK

ULTIMATE



DRAGONBITE™
COMPATIBLE

Miniatures by www.reapermini.com

VILLAGE ITEMS

Copyright ©2016 Fat Dragon Games. All rights reserved. www.fatdragongames.com



DRAGONLOCK

Getting Started

Welcome to the DRAGONLOCK: Ultimate™ terrain system. This instruction manual will outline some basic materials you will need for 3D printing these models, specific printing information for the models in this set, and links to additional resources.

For more information on getting started with 3D printing, help with choosing a printer, settings for many popular printers, troubleshooting, and more; please visit our 3D Printer forums:

<http://fatdragongames.proboards.com/board/21/3d-printing-dragonlock-terrain>

For painting tutorials on these and other models in the DRAGONLOCK: Ultimate™ product line, please visit our Youtube channel:

<https://www.youtube.com/channel/UC5Lbnd97HV3rU98gcwHklzQ>

Basic Tools and Materials



For gluing models with multiple pieces together, we have found that Gorilla Glue works great (especially the 'gel' type.)

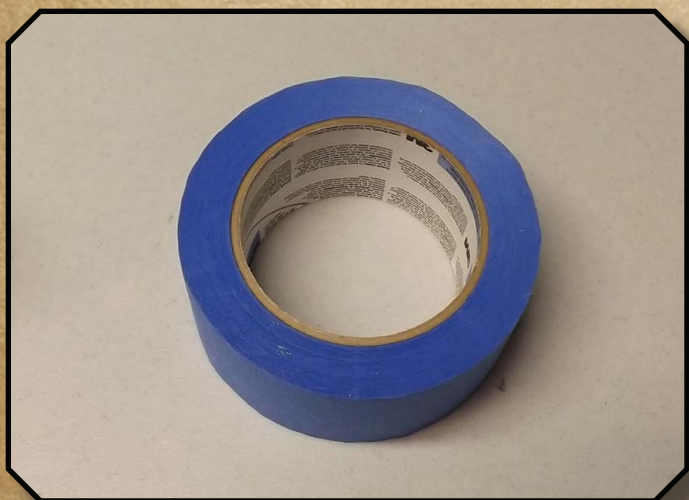


While not necessary, it helps to have a pair of small tweezers on hand. You'll find yourself using them often to pull odd strands of plastic off the model, getting small bits of plastic out of the printer, etc.

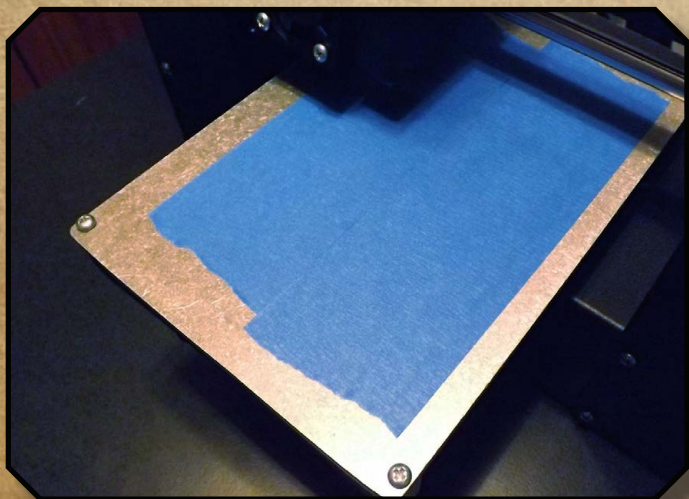
DRAGONLOCK



Absolutely essential is a small metal spatula to help remove models from your build plate. We've found that ones like this from art supply aisles at craft stores work great and should only cost you a few dollars.



When printing PLA on a non-heated build plate, applying blue painter tape to your build-plate works great to help the plastic adhere.



To make your print stick as well as possible, you can wipe off newly applied tape with a paper towel that has a little rubbing alcohol on it (the tape has a wax coating on the back that sometimes inhibits the plastic from properly sticking to it).

DRAGONLOCK

General printing tips for DRAGONLOCK: Ultimate™ models

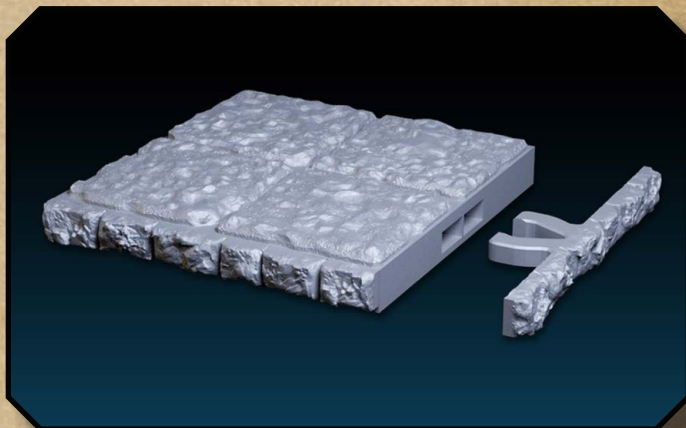
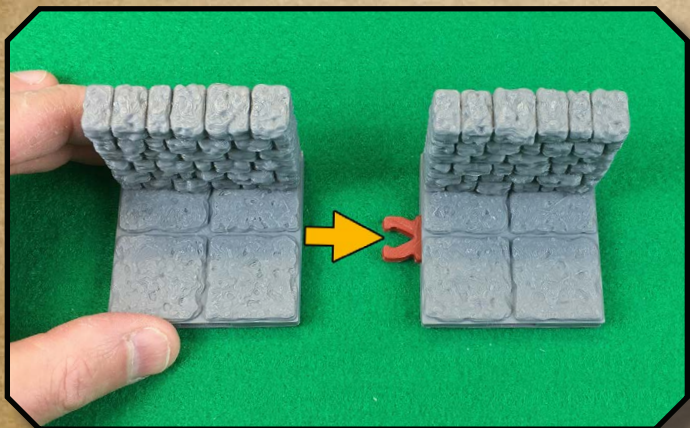
With the wide variety of printers and filaments on the market, it isn't possible for us to list printer settings that will work with multiple machines. Please visit the Fat Dragon Games forums for printer-specific tips and information:

<http://fatdragongames.proboards.com/board/21/3d-printing-dragonlock-terrain>

Using the DRAGONBITE™ clips



Before inserting a Dragonbite™ clip, you must first remove the printing support present in each slot on all four sides of every model. We recommend using needle-nose pliers to gently twist the support out of place (always wear eye protection when using tools.) Clips should be printed with 15-20% infill (but can be printed with 0%).



To connect DRAGONLOCK™ Ultimate models together, simply insert a Dragonbite™ clip into the slot of one model, then slide the adjoining model into the opposite side. In addition to the standard v2.0 clip, there is an optional looser clip included. Unused slots can be covered with Dragonlock™ edge pieces.

DRAGONLOCK

Village Well



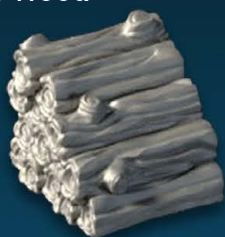
Cart



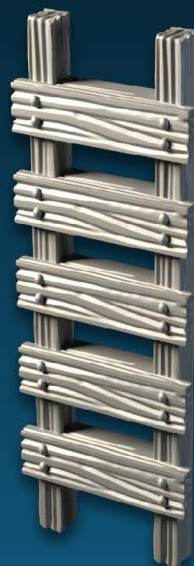
Stocks



Fire Wood



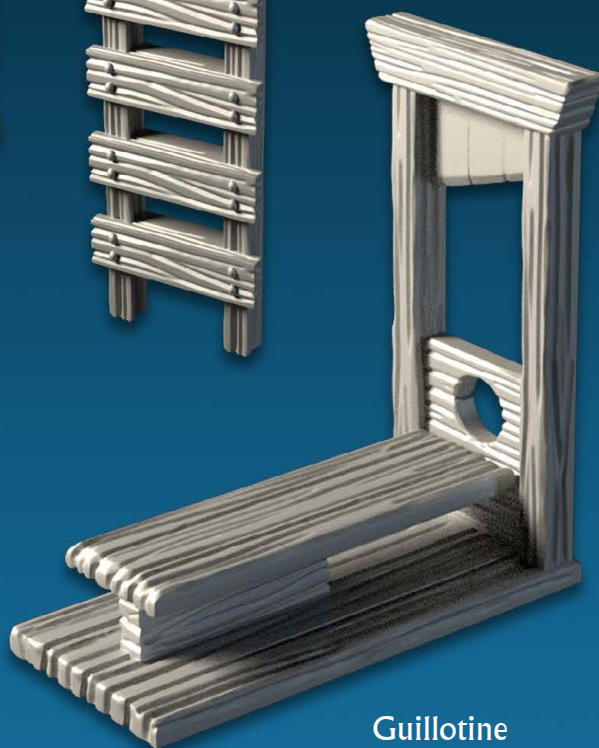
Ladder



Outhouse

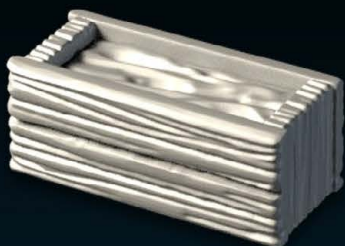


Guillotine

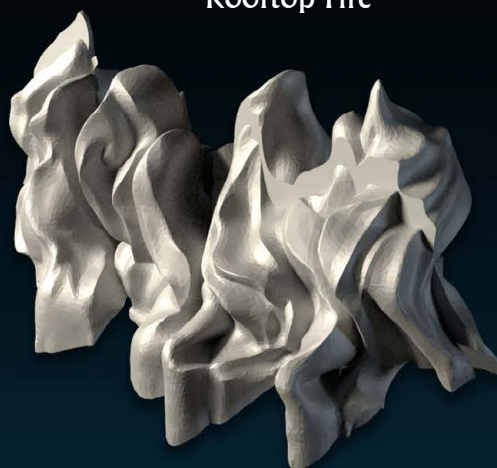


DRAGONLOCK

Water Trough



Rooftop Fire

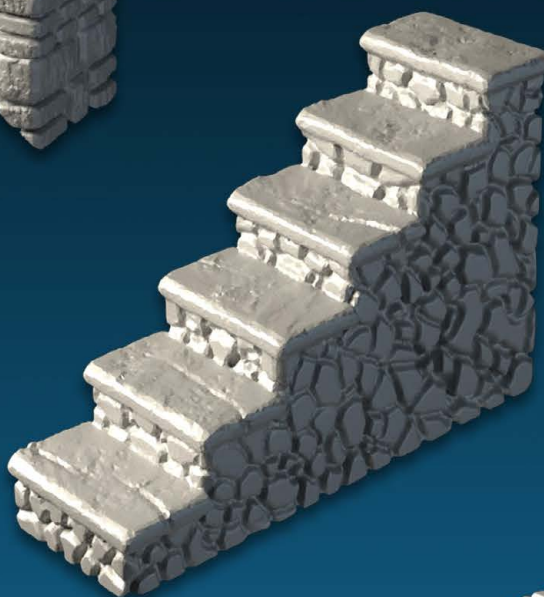


Chimney



Sundial

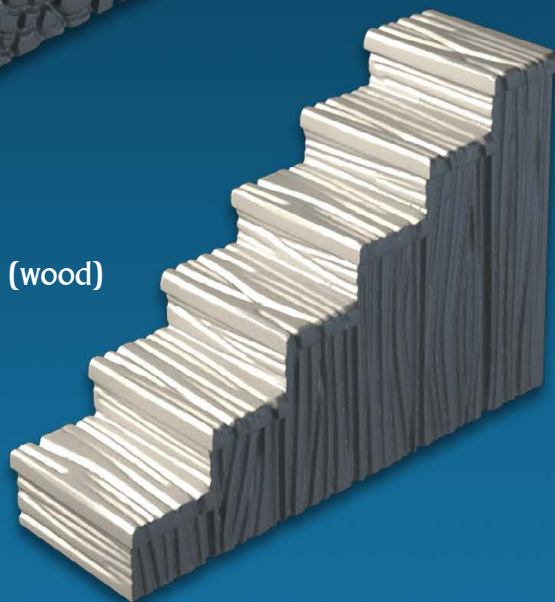
Stairs (stone)



Basement Access



Stairs (wood)





Printing info:

Filament:

- We recommend using PLA or PLA Pro/PLA+(we use Hatchbox and eSun in the FDG office)

Layer Height:

- All models: 100 micron

Top/Bottom layers:

- 6 layers or .9mm

Infill:

- 5-10%

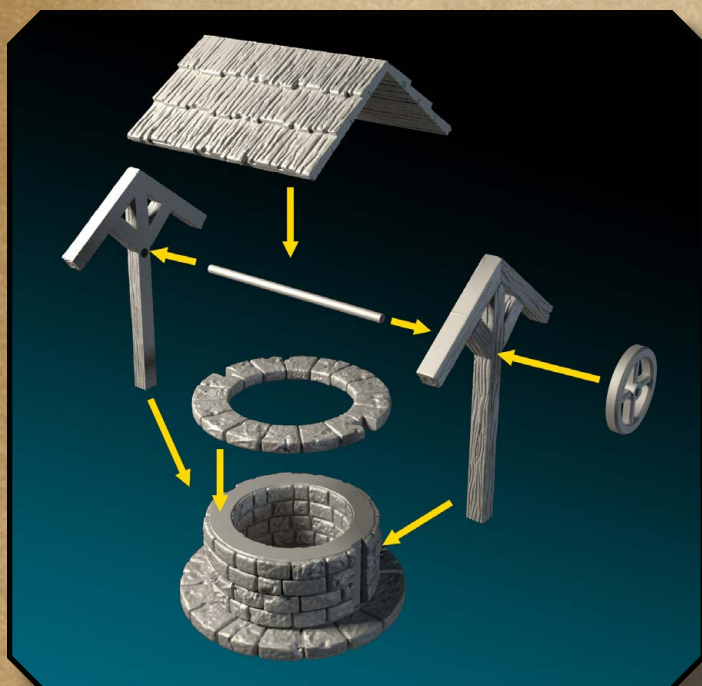
Rafts:

- None

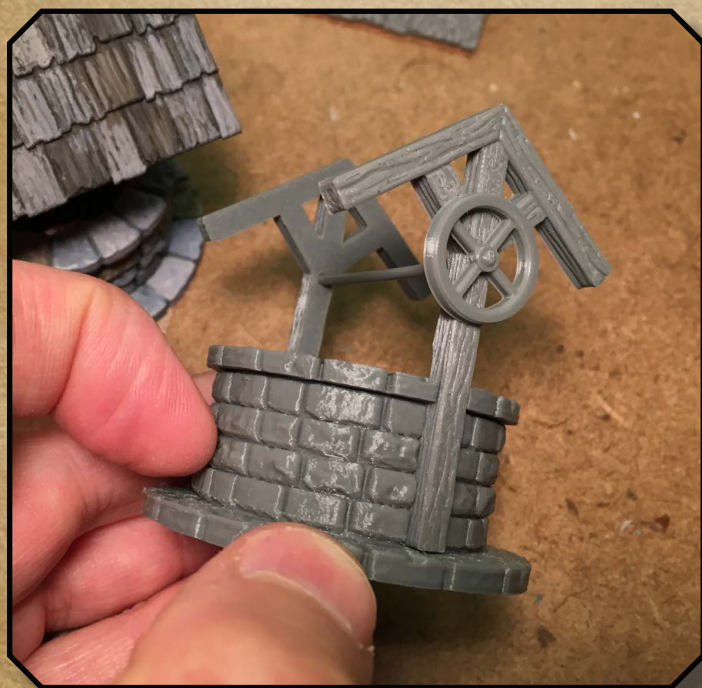
Brim:

- None

DRAGONLOCK



Use a piece of 1.75mm filament (or a round toothpick) cut to length for the crossbar between the two vertical supports. Glue the round upper lip of the well to the lower section first. Temporarily put the vertical posts in place to aid in proper alignment, then remove before it dries. Then insert the rod between them, and glue in place on the sides of the well. Finish by gluing the roof in place, and the crank wheel on one side.

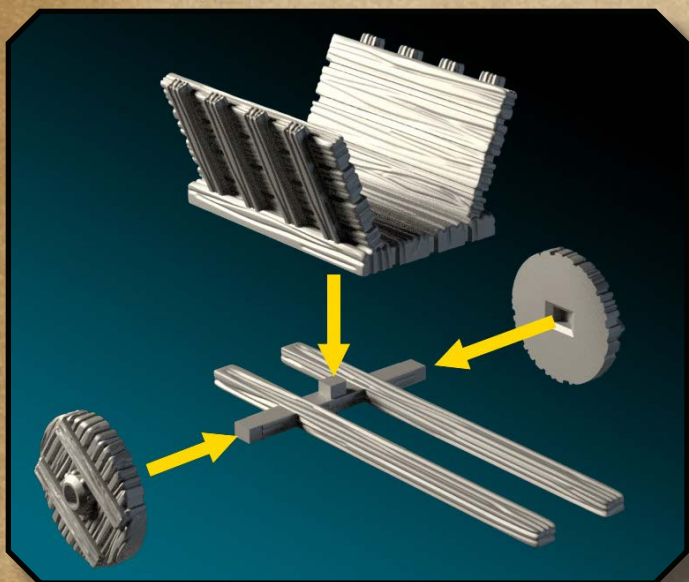


Insert the rod of filament (or toothpick) between the vertical supports when gluing them to the base. Finish by gluing the crank wheel as depicted above.



Finish by gluing the roof in place.

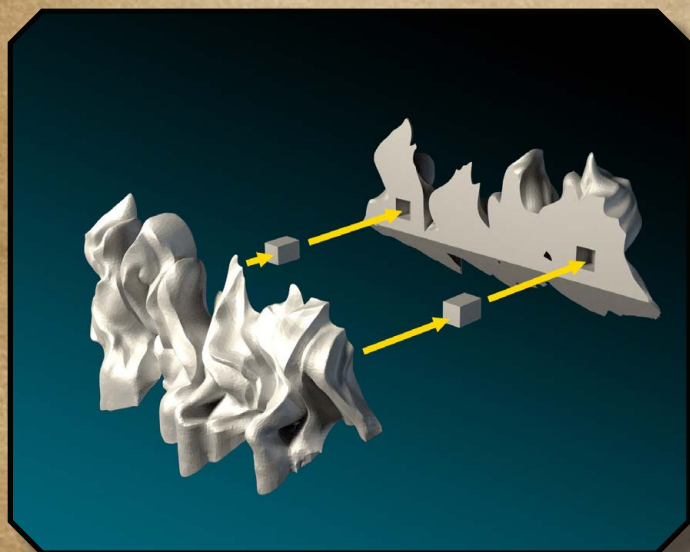
DRAGONLOCK



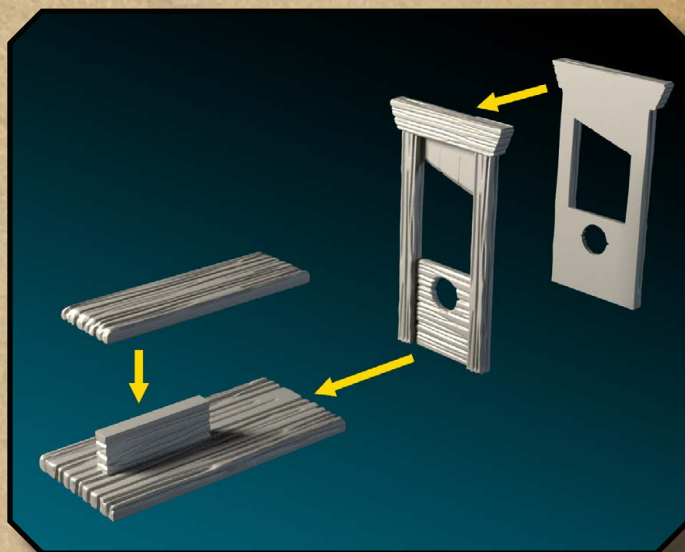
Glue the upper cart to the lower frame, using the peg/hole for proper alignment. Glue the wheels to the lower frame.



Glue the two chimney halves together as shown.



Glue the two fire halves together using the alignment pins.



Glue the guillotine vertical halves together first, then glue those to the two horizontal base pieces.