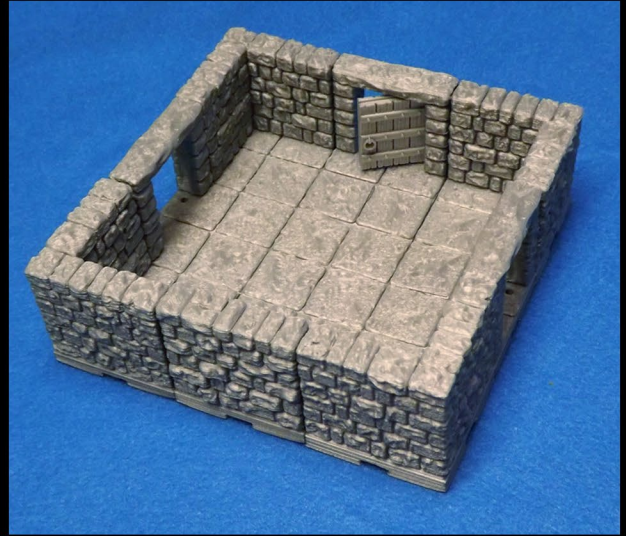
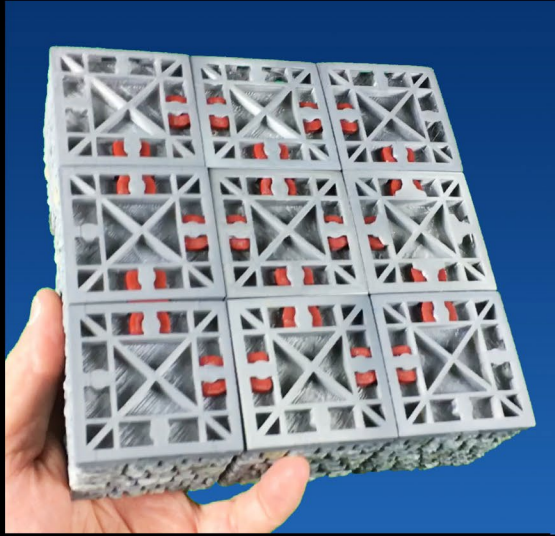


DRAGONLOCK

ULTIMATE



DRAGONBITE™
COMPATIBLE

Miniatures by www.reapermini.com

VILLAGE ROOF EXPANSION

Copyright ©2016 Fat Dragon Games. All rights reserved. www.fatdragongames.com



DRAGONLOCK

Getting Started

Welcome to the DRAGONLOCK: Ultimate™ terrain system. This instruction manual will outline some basic materials you will need for 3D printing these models, specific printing information for the models in this set, and links to additional resources.

For more information on getting started with 3D printing, help with choosing a printer, settings for many popular printers, troubleshooting, and more; please visit our 3D Printer forums:

<http://fatdragongames.proboards.com/board/21/3d-printing-dragonlock-terrain>

For painting tutorials on these and other models in the DRAGONLOCK: Ultimate™ product line, please visit our Youtube channel:

<https://www.youtube.com/channel/UC5Lbnd97HV3rU98gcwHklzQ>

Basic Tools and Materials



For gluing models with multiple pieces together, we have found that Gorilla Glue works great (especially the 'gel' type.)

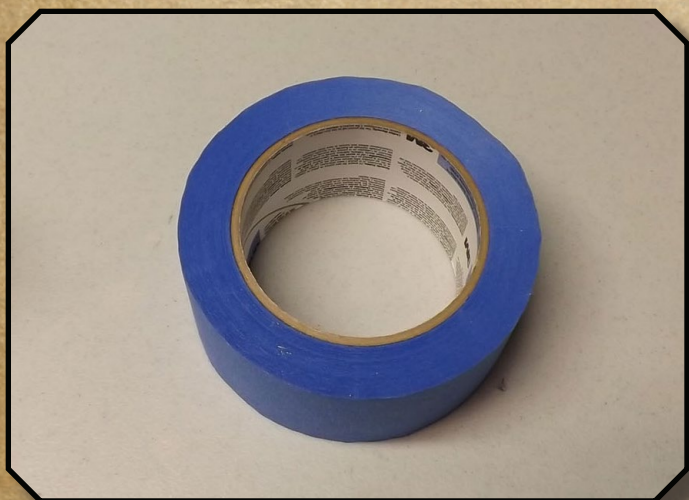


While not necessary, it helps to have a pair of small tweezers on hand. You'll find yourself using them often to pull odd strands of plastic off the model, getting small bits of plastic out of the printer, etc.

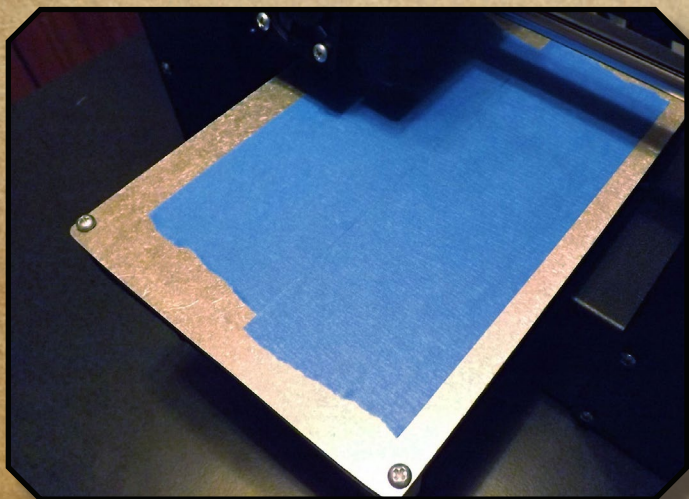
DRAGONLOCK



Absolutely essential is a small metal spatula to help remove models from your build plate. We've found that ones like this from art supply aisles at craft stores work great and should only cost you a few dollars.



When printing PLA on a non-heated build plate, applying blue painter tape to your build-plate works great to help the plastic adhere.



To make your print stick as well as possible, you can wipe off newly applied tape with a paper towel that has a little rubbing alcohol on it (the tape has a wax coating on the back that sometimes inhibits the plastic from properly sticking to it).

DRAGONLOCK

General printing tips for DRAGONLOCK: Ultimate™ models

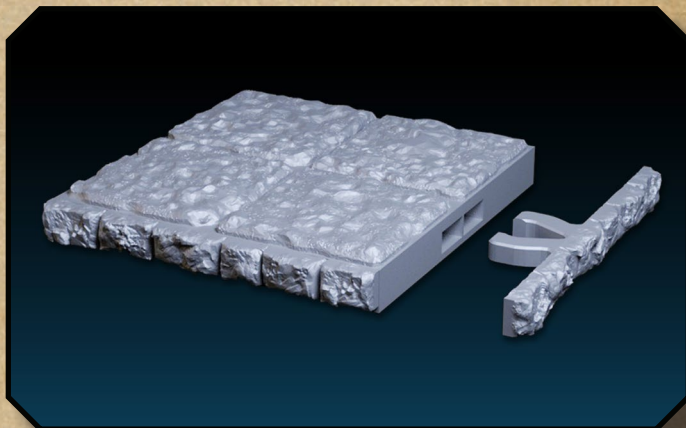
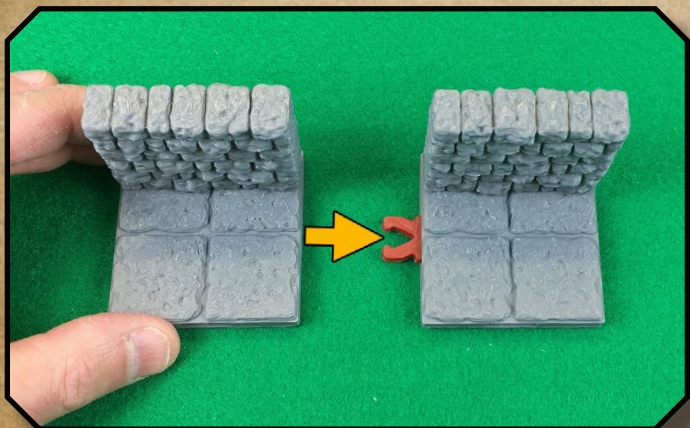
With the wide variety of printers and filaments on the market, it isn't possible for us to list printer settings that will work with multiple machines. Please visit the Fat Dragon Games forums for printer-specific tips and information:

<http://fatdragongames.proboards.com/board/21/3d-printing-dragonlock-terrain>

Using the DRAGONBITE™ clips



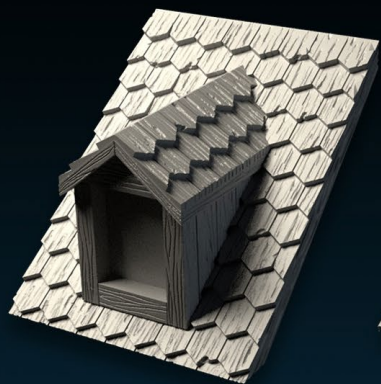
Before inserting a Dragonbite™ clip, you must first remove the printing support present in each slot on all four sides of every model. We recommend using needle-nose pliers to gently twist the support out of place (always wear eye protection when using tools.) Clips should be printed with 15-20% infill (but can be printed with 0%.)



To connect DRAGONLOCK™ Ultimate models together, simply insert a Dragonbite™ clip into the slot of one model, then slide the adjoining model into the opposite side. In addition to the standard v3.0 clip, there is an optional clip (the previous 2.0 version) that is slightly looser, should you need it. Unused slots can be covered with Dragonlock™ edge pieces.

DRAGONLOCK

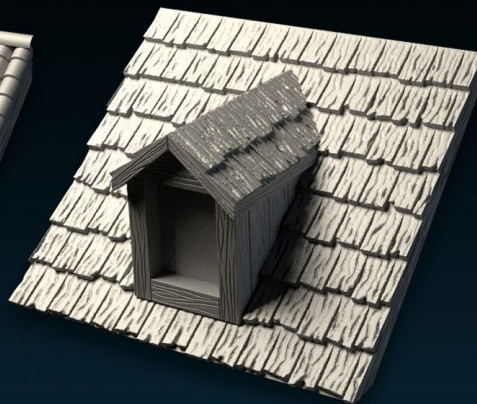
Wood Dormer_20



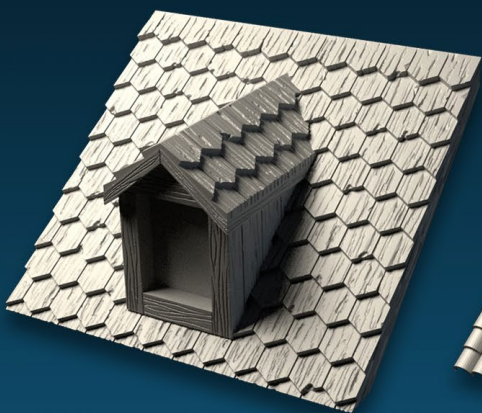
Stone Dormer_2



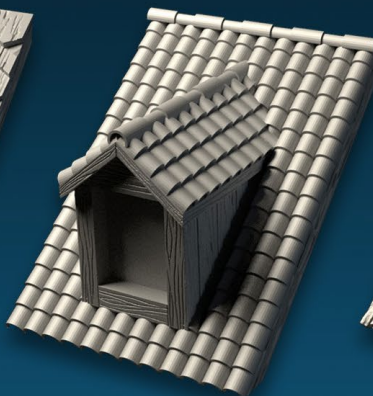
Timber Dormer_30



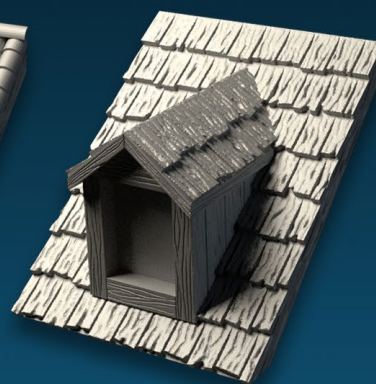
Wood Dormer_30



Stone Dormer_20



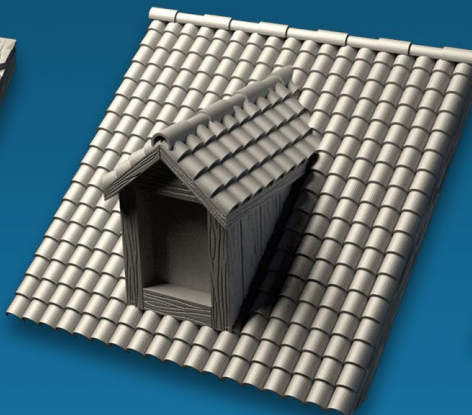
Timber Dormer_20



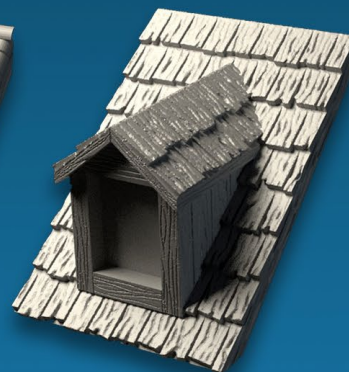
Wood Dormer_2



Stone Dormer_30



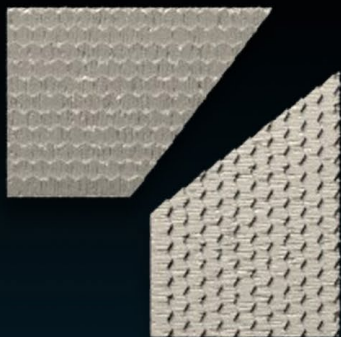
Timber Dormer_2



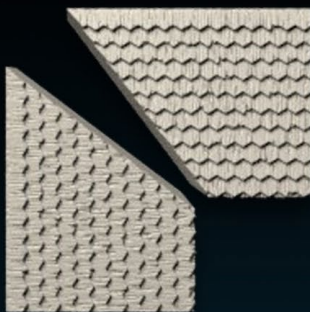
Dormer openings fit the windows provided with each village building set.

DRAGONLOCK

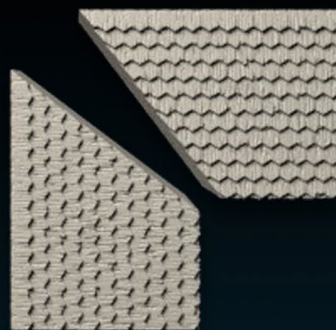
Wood__OutsideCorner_A



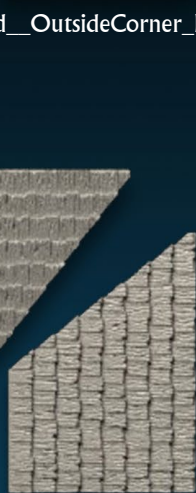
Wood__InsideCorner_4_B



Wood__InsideCorner_4O_B



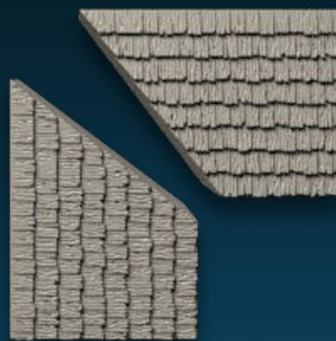
Wood__OutsideCorner_B



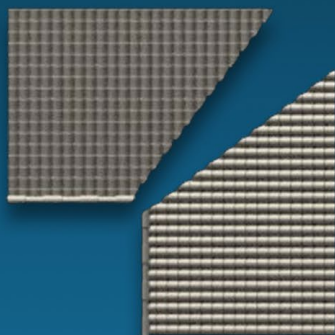
Wood__InsideCorner_4_A



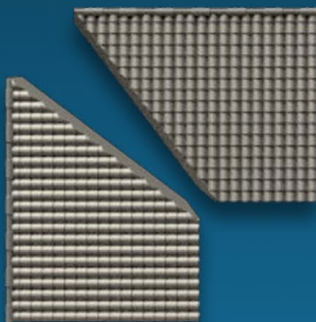
Wood__InsideCorner_4O_A



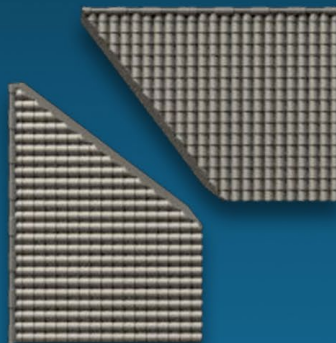
Stone__OutsideCorner_A



Stone__InsideCorner_4_B



Stone__InsideCorner_4O_B



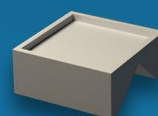
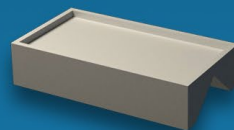
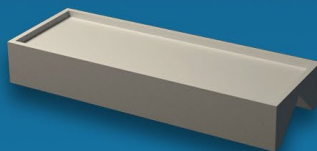
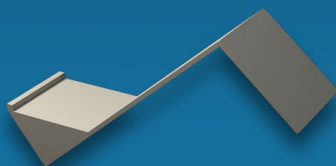
Stone__OutsideCorner_B



Stone__InsideCorner_4_A



Stone__InsideCorner_4O_A



Side Adaptor for miniatures (Long, Medium, and short)

Top Adaptor for miniatures (1", 2" & 3" length)



Printing info:

Filament:

- We recommend using PLA (we use eSun and Hatchbox in the FDG office)

Layer Height:

- All clips, models 200 micron/.2mm

Top/Bottom layers:

- 6 layers or .9mm

Infill:

- 5-10% on roof models
- 15% on Clips

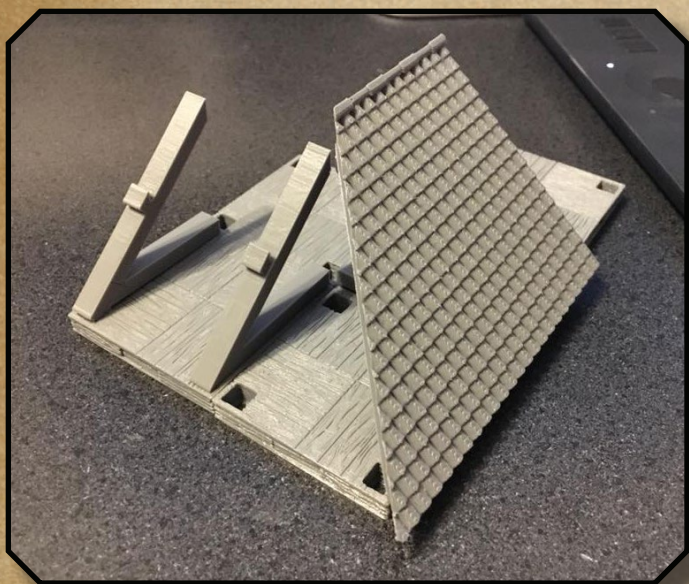
Rafts:

- None

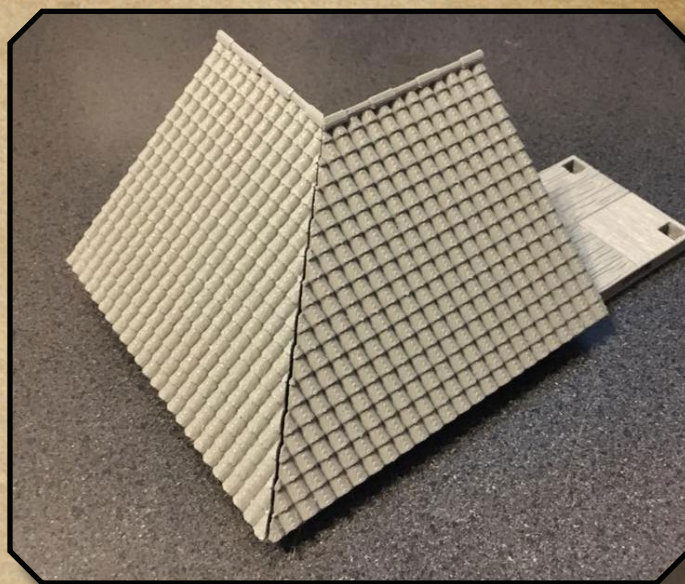
Brim:

- None

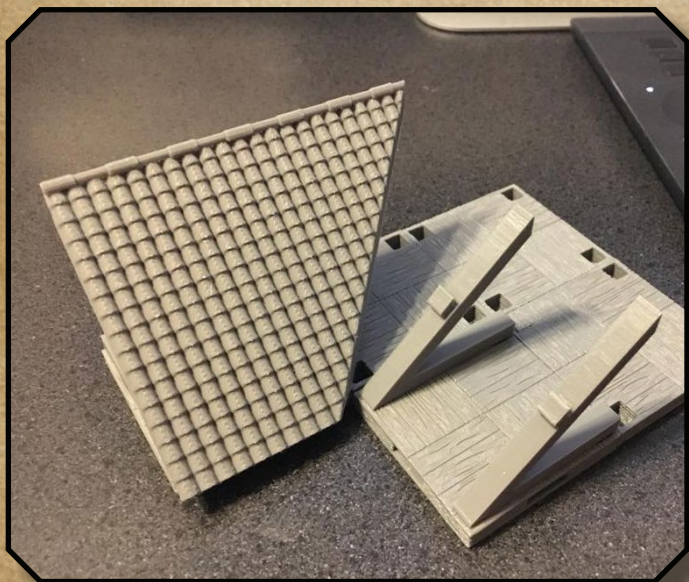
DRAGONLOCK



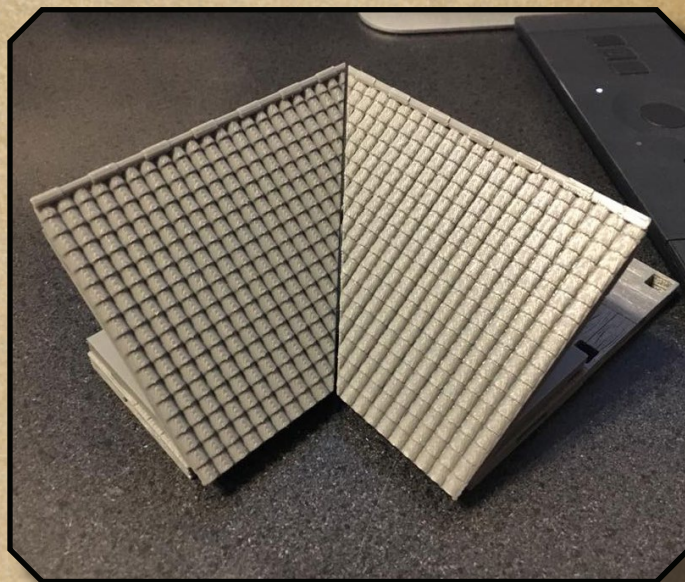
Outside corner (B panel shown.) Note no trusses on corner tile.



Outside roofs in place (A panel added on left side.)



Inside corner (A panel shown). Note no trusses on tile under the roof join line.



Inside corner with B panel added (right side.)