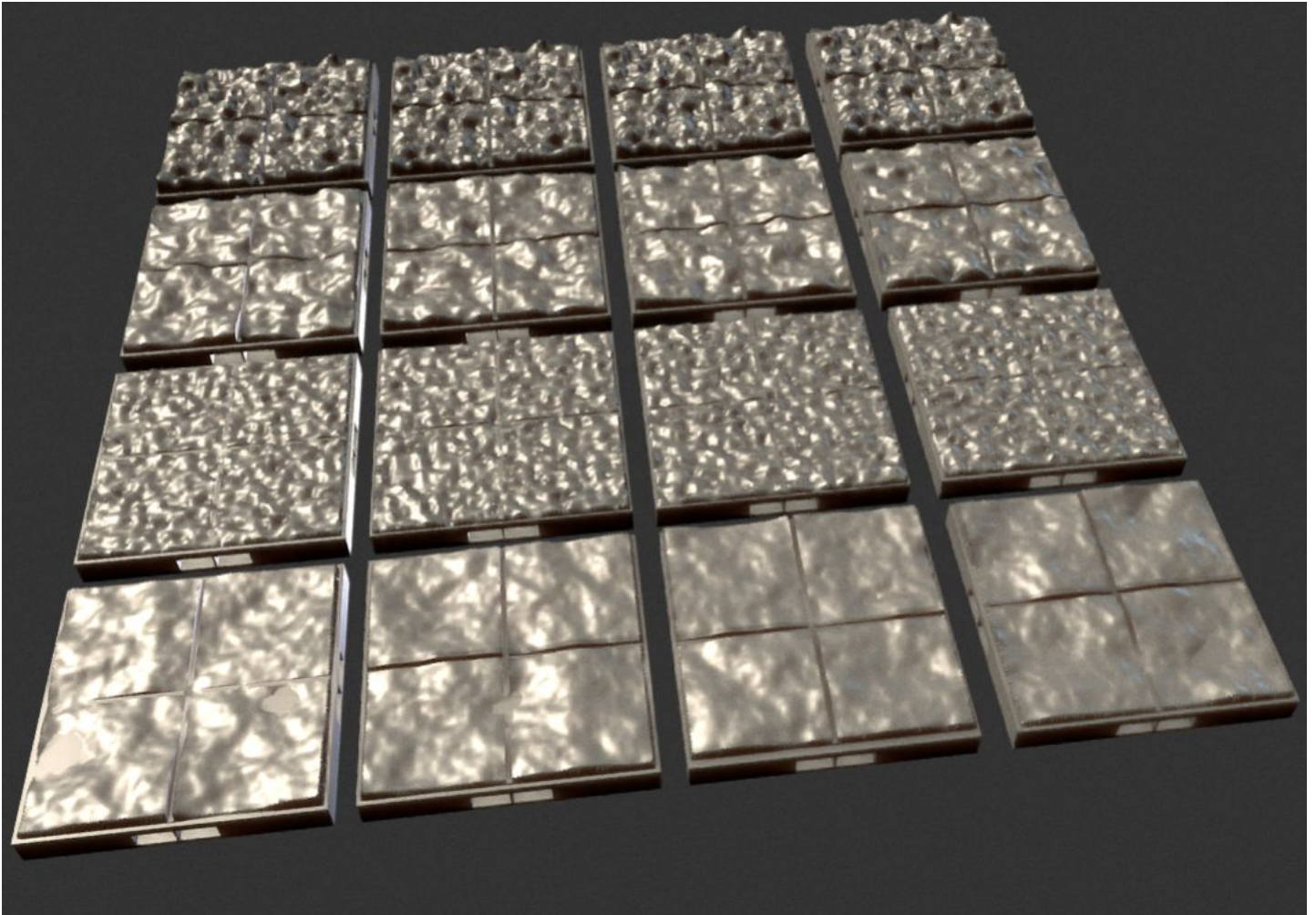


FAT DRAGON GAMES COMMUNITY CREATOR

Landscape Terrain

Hi, I am Will Walker. These Landscape Terrain tiles were one of the first sets I made upon request of the community. I am making it free to the community as one of the goals of my [Patreon](#). Join this elite community to stay at the very forefront of Dragonbite Tile design. Vote on new projects and get involved with development.



RECOMMENDED PRINT SETTINGS

- **Layer Size:** 0.15mm recommended, 0.1mm for smoother features
- **Infill:** 10% for all models recommended
- **Top/Bottom Layers:** 6 (or 0.9mm if using a different layer size than 0.15mm)
- **Side Shell Count:** 2 (or 0.8mm if using a different nozzle size than 0.4mm)
- **Raft/Brim/Supports:** none

DESIGN YOUR DUNGEONS WITH **DungeonPrint!**

You can visually design multi-level dungeons and plan your print jobs using [DungeonPrint Studio](#). Check it out!

