



# LASALLE MEDIUM TANK

We recommend using Gorilla Glue (or similar super glue) to make these models.

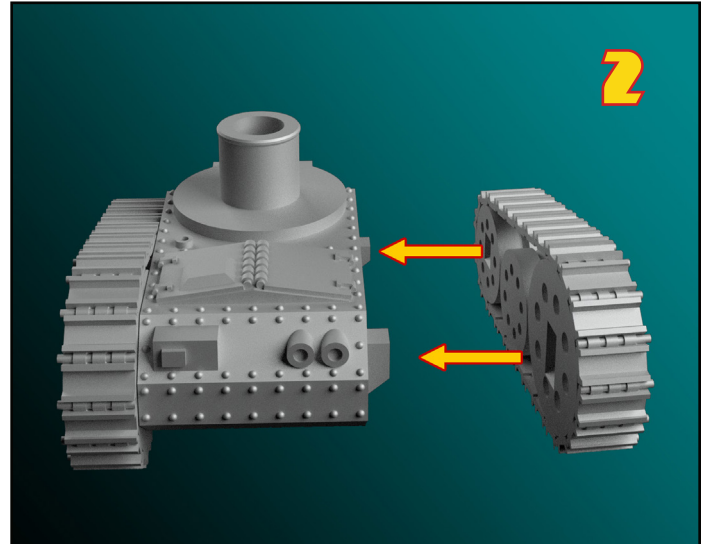
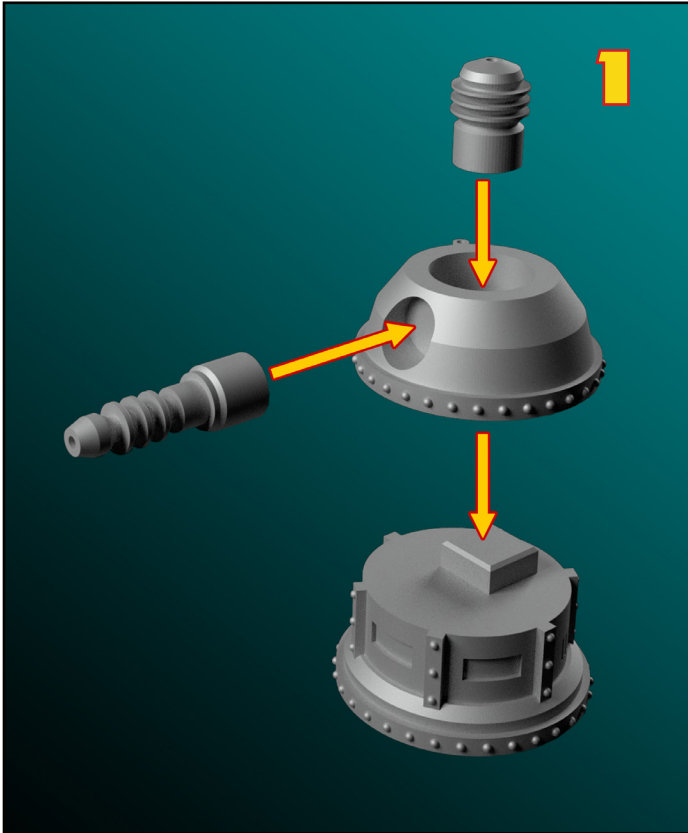
Print all models at .1mm layer height, 10% infill. We suggest adding a brim for printing the generator and gun. When printing the generator, printing 4 at a time will allow each layer to fully harden on each model before the next layer is printed.



'World War Tesla' is a trademark of Fat Dragon Games  
Copyright ©2017 Fat Dragon Games. All rights reserved.  
[www.fatdragongames.com](http://www.fatdragongames.com)



## LASALLE MEDIUM TANK



Note: Do not glue the turret to the main body, it is intended to spin once completed (and future optional turrets are planned for this model, allowing you to swap turrets/cards without having to reprint the chassis.)