

PROPT GAMING AIDS



MINUTE DUNGEON



Legal Stuff

Propz: Gaming Aids - Minute Dungeon is not an open gaming licence .PDF file. There is no open gaming content in this PDF.

Permission is granted for the original purchaser to print any part of this document for personal use only. No parts of this document may be modified, nor may any parts of this document be distributed in any form without express written consent of Arid Hills Productions.



By Nick Fatchen



Propz: Gaming Aids - Minute Dungeon

© Copyright Arid Hills Productions 2007

Product Code: AHP003



Contents

Page	
1	Legal Stuff
1	Contents
2,3	General Instructions
4	Small Corner, T-Junction & Crossroads Instructions
5	Small Corner
6	Small T-Junction
7	Small Crossroads
8	Corridor Instructions
9	Small Corridor
10	Long Corridor
11	Large Corner Instructions
12, 13	Large Corner
14	Large T-Junction Instructions
15, 16	Large T-Junction
17	Large Crossroads Instructions
18	Large Crossroads
19	Door Instructions
20	Door Variants
21, 22	Floor Sections
23	Floor Mat

Introduction

Welcome to Propz: Gaming Aids. In this PDF file you'll find a flat flagstone texture, wall and floor textures to make a variety of basic corridors, various doors to add variety and instructions on how to put them all together. Once made you should be able to breath life into any RPG encounter or create that all important environment for skirmishing style wargames simply by laying out the segments to create the layout you desire.

But first a few words on equipment and techniques:

Equipment

Although we'd recommend you use a light card for strength and to avoid some of the issues which can plague paper such as tearing/warping from too much glue, all of these structures have been built and tested using standard 80gsm paper and have been quite adequate for the purpose. So you can use paper right out of your printer if you don't want to go and buy card.

We would also strongly recommend that you use a cutting mat for (you guessed it) cutting on. There are two reasons for this. The first is that you don't damage your table or bench. The second is that a cutting mat makes it easy to make short cuts that are reasonably straight without the need for a ruler. If you don't have a mat or don't want to buy one, you can use heavy cardboard from a packing box of some sort. Just make sure it's clean and flat - and be careful not to cut right through it into your table.

We have used a standard stanley knife (not actually name brand) for cutting. Any craft knife

will be fine for this. It is possible to use scissors for most of the work but results won't be nearly as good and cutting arches and doorways will be difficult to do without creasing your walls.

For attachment, we used a standard style glue stick. It's possible to get these so that while wet they're a particular colour like blue and when they dry, they dry clear. This is really useful to let you know if you've missed any important spots. Sticky tape or double sided tape can be used for attaching but obviously has to be cut to size and has a tendency to stick to fingers rather than the paper.

Finally, to ensure straight cuts, especially along longer lines we used a steel ruler. Don't use a wooden one as you'll gradually shave sections off it and it will rapidly stop being a straight edge.

Techniques

When cutting, make sure that the printed section of paper or card is held firmly as this reduces the likelihood of it tearing (especially if you're using paper)

Don't ever rest the section you're cutting on yourself. This is likely to result in a trip to the Doctor's and stitches (not to mention blood over your work).

If you're cutting anything other than along a tab use a ruler. You'll get better results than if you try to do it freehand.

Always score along the lines indicated. This makes it a lot easier to fold sections. Always use a ruler otherwise you may find that where the card folds isn't where you want it to.



ARID HILLS PRODUCTIONS

© Copyright Arid Hills Productions 2007

When scoring along a line, don't use the sharp edge of the knife (especially with paper) as you're likely to cut right through. The aim is to create a dent in the paper or card to make it fold more easily, not to cut through it. We used the back of our knife to do it, but if you're doing this make sure that you don't inadvertently push down on the sharp part of the blade with your finger.

If you don't want to use a knife, anything with a semi-sharp point will do, such as skewers, pens (although these will leave marks) or even toothpicks.

Always do a dry run before gluing so that you've can work out how each section attaches to others in a leisurely manner otherwise you may find that you're rushing to get parts glued before the glue dries, which may not produce the best results.

When dealing with several identical parts, it can be easier to cut each one, score each one and pre-fold each one but don't glue each one before final folding as this could mean that the glue has already partially dried before you get to the final piece and so won't stick as well.

As all the models are scaled for 25mm figures, there are some parts which are fiddly. Using a toothpick or matchstick to place glue on these parts is often easier than trying to place glue straight from the nozzle or the glue stick.

To stick these fiddly bits down, use another toothpick or matchstick (don't use the one with the glue on it as this will then stick to bits you don't want stuck).

Conventions

There are a few conventions or assumptions that appear on the following pages that may need explaining here:

1. Photos always appear under the step they refer to.
2. A dotted line like ----- indicates a fold line. These are intentionally faint as that way they don't show up on the finished model but will usually extend past the model onto white paper/card to help you to locate them.
3. Tabs come in various sizes and shapes and are usually not labelled unless there is the possibility of confusion when putting the model together. The basic tab shape is shown here:



4. Tips appear in italics alongside a circle with a thumbs up in like:



Tips in italics.

Finally...

Ensure any page scaling setting (in print setup) is set to None. Otherwise everything (including the inch grids) will be scaled down and may become difficult to work with.

Although you can print out this entire PDF, we'd suggest that you either print out instructions using the draft setting or just view them on the monitor to save ink.

We'd also suggest that you use the highest quality setting for the models as this will produce the best results.



ARID HILLS PRODUCTIONS

© Copyright Arid Hills Productions 2007

Small Corner, T-Junction & Crossroads



Requirements: 2 Sheets of thin card (letter size or A4), tape or glue, craft knife or scissors

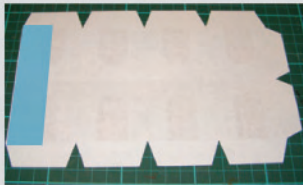
A dotted line indicates a fold line

Instructions

1. Print the Corridor and Small Floor Sections, and whichever of the small wall sections you've decided to use onto the sheets of card (for best results use the high quality print setting). We've chosen the Small Crossroads for this example.
2. Carefully cut around the Small Crossroads Floor section (keep the rest of the floor sections to make other models) and the Wall section, making sure that you don't cut any tabs off.



3. Carefully score along fold lines.
4. Glue the rear side of the wall section, making sure that you don't glue in the blue shaded area shown below.

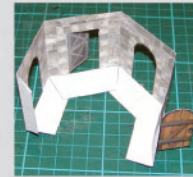


5. Fold the wall section so that it is now double sided and decide whether you wish to use any of the door variants or if you wish to have open or removed doors to create openings. If you wish to add door variants, follow the instructions found later in this document.



If you decide to have open doors or arches make sure that the glue is dry before you cut around the door. If you don't, the paper or card may tear and spoil the look of the door.

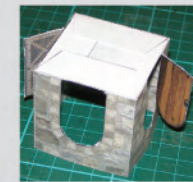
6. Fold along all wall section fold lines as shown.



7. Next, join the wall section together by gluing the end tab and inserting it into the other end of the wall section as shown.

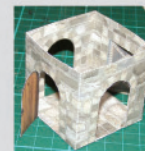


8. Glue floor section to wall tabs as shown.



We've found the easiest way to attach the floor to the wall tabs is to fold the tabs flat, place glue on the underside of the floor section and to carefully lower it onto the tabs starting at one end and working out. Then turn the section over, apply glue to any tabs which haven't stuck to the floor section and reattach them.

9. The Small Crossroads section should look like the one below. The other sections should be similar but with fewer doors.



ARID HILLS PRODUCTIONS

© Copyright Arid Hills Productions 2007

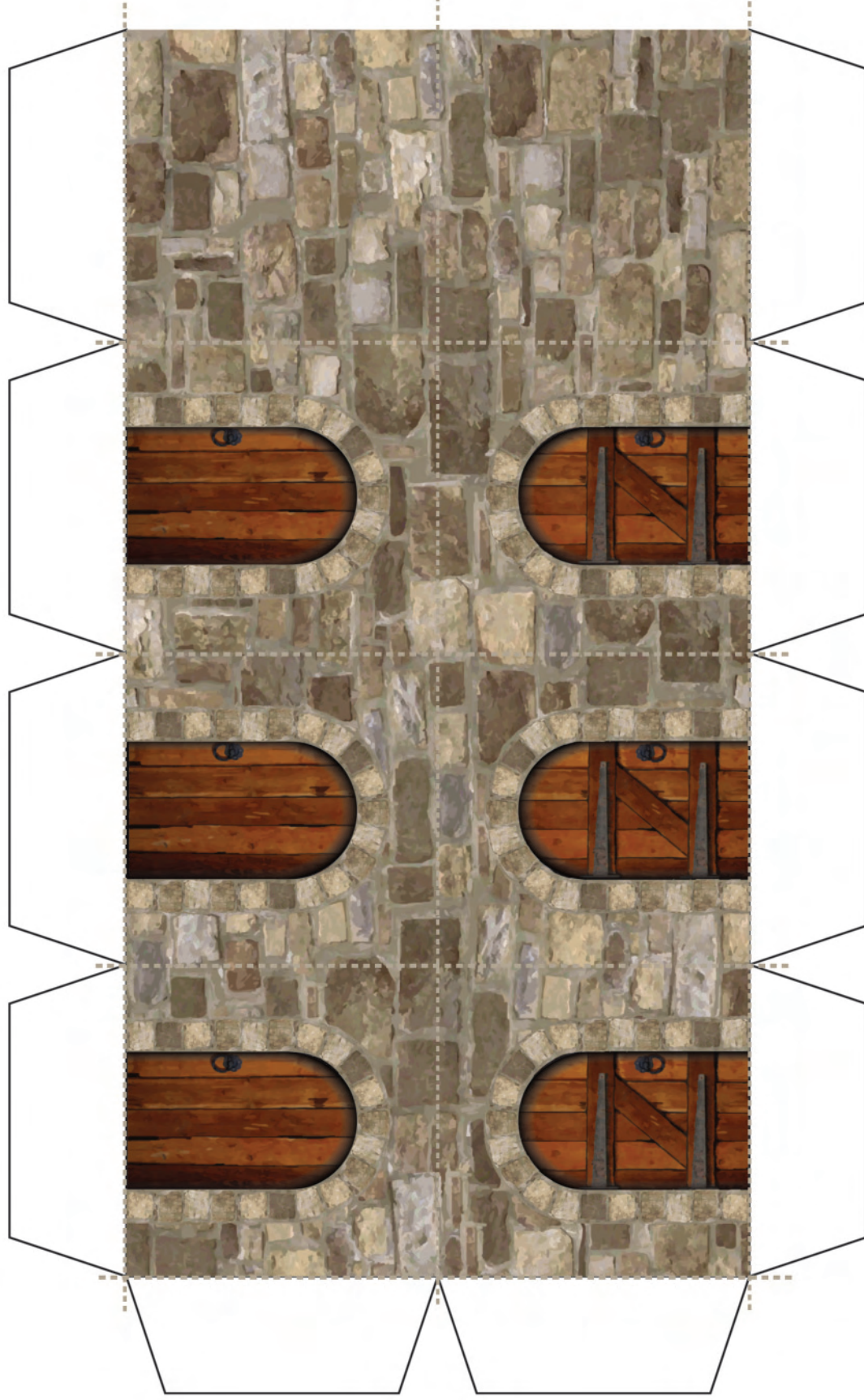
Small Right Angle Wall Section



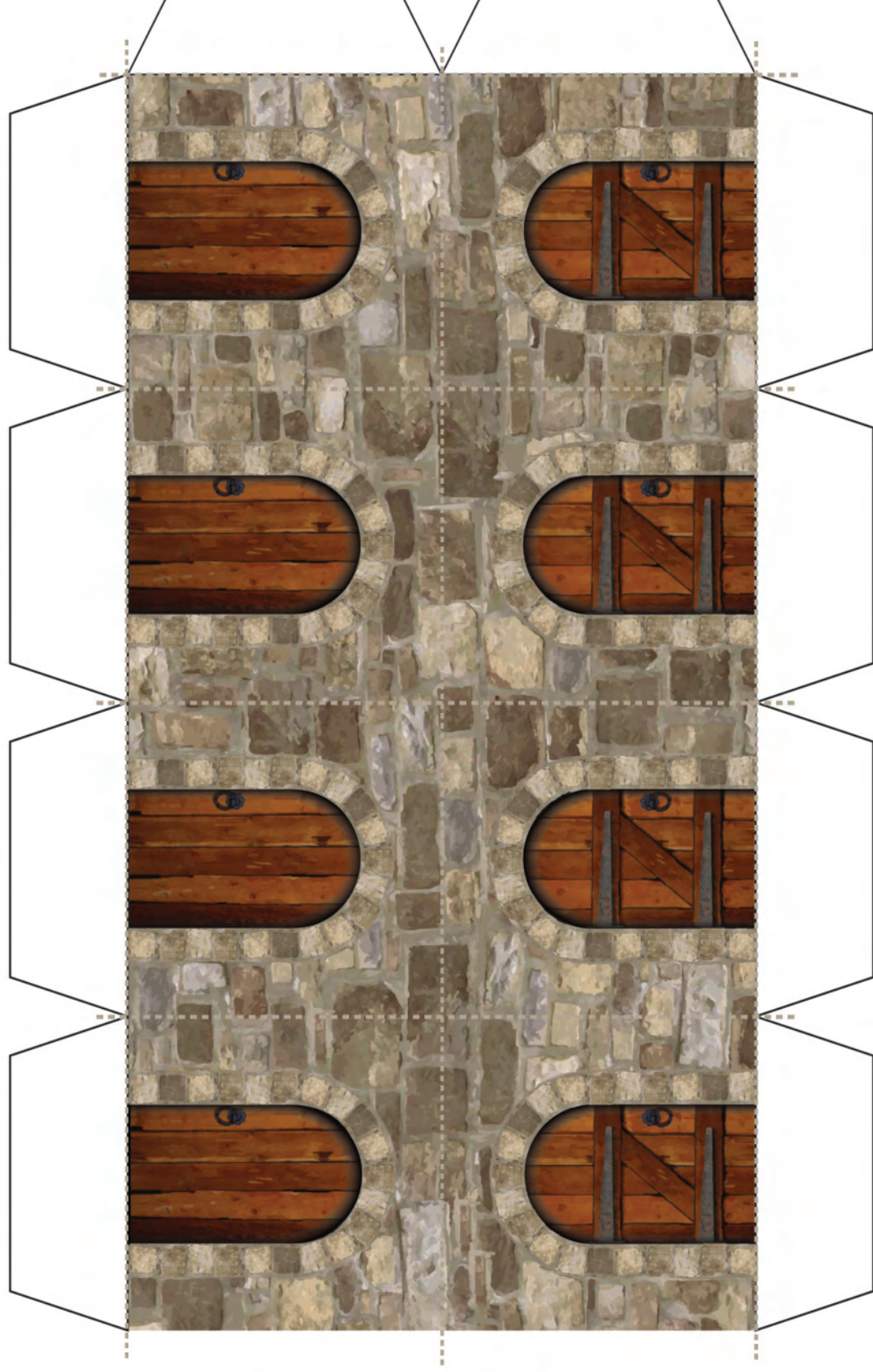
ARID HILLS PRODUCTIONS

© Copyright Arid Hills Productions 2007

Small T - Junction Wall Section



Small Crossroads Wall Section



ARID HILLS PRODUCTIONS

© Copyright Arid Hills Productions 2007

Long & Short Corridors



Requirements: 3 Sheets of thin card (letter size or A4), tape or glue, craft knife or scissors

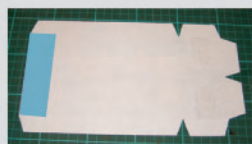
A dotted line indicates a fold line

Instructions

1. Print the Corridor and Small Floor Sections, and two Long Corridor or two Short Corridor Wall Sections (depending on whether you want to build a long or short corridor) onto the sheets of card (for best results use the high quality print setting).
2. Carefully cut around the Long Corridor Floor section (keep the rest of the floor sections to make other models) and the two Wall sections making sure that you don't cut any tabs off.



3. Carefully score along fold lines.
4. Glue the rear sides of the wall sections making sure that you don't glue in the blue shaded area shown below on each section.



5. Fold the wall sections so that they are now double sided and decide whether you wish to use any of the door variants or if you wish to have open or removed doors to create openings. If you wish to add door variants, follow the instructions found later in this document.

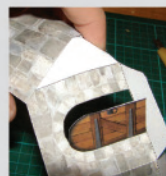


If you decide to have open doors or arches make sure that the glue is dry before you cut around the door. If you don't, the paper or card may tear and spoil the look of the door.

6. Fold along all wall section fold lines as shown.



7. Next, join the two wall sections together by gluing an end tab and inserting it into the other wall section as shown.



8. Repeat step seven with the remaining end tab.
9. Glue floor section to wall tabs as shown.



We've found the easiest way to attach the floor to the wall tabs is to fold the tabs flat, place glue on the underside of the floor section and to carefully lower it onto the tabs starting at one end and working out. Then turn the section over, apply glue to any tabs which haven't stuck to the floor section and reattach them.

10. The long corridor section should look like the one below. The short section should look Similar, only shorter.



ARID HILLS PRODUCTIONS

© Copyright Arid Hills Productions 2007

Short Corridor Wall Section



ARID HILLS PRODUCTIONS

© Copyright Arid Hills Productions 2007

Long Corridor Wall Section



ARID HILLS PRODUCTIONS

© Copyright Arid Hills Productions 2007

Large Corner

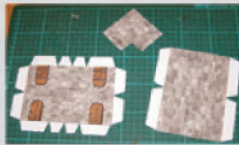


Requirements: 3 Sheets of thin card (letter size or A4), tape or glue, craft knife or scissors

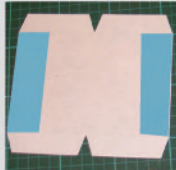
A dotted line indicates a fold line

Instructions

1. Print the Large Floor Sections, Large Right Angle Corner Wall Sections One and Two sheets onto the sheets of card (for best results use the high quality print setting).
2. Carefully cut around the Large Right Angle Corner Floor section (keep the rest of the floor sections to make other models) and the two Wall sections making sure that you don't cut any tabs off.



3. Carefully score along fold lines.
4. Glue the rear sides of the wall sections making sure that you don't glue in the blue shaded area shown below on the section without doors.

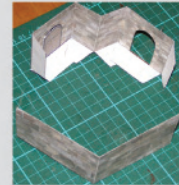


5. Fold the wall sections so that they are now double sided and decide whether you wish to use any of the door variants or if you wish to have open or removed doors to create openings. If you wish to add door variants, follow the instructions found later in this document. The wall sections below have a standard wooden door and a steel door variant.

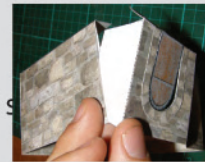


If you decide to have open doors or arches make sure that the glue is dry before you cut around the door. If you don't, the paper or card may tear and spoil the look of the door.

6. Fold along all wall section fold lines as shown.



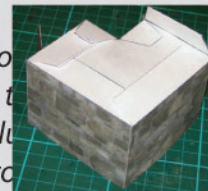
7. Next, join the two wall sections together by gluing an end tab and inserting it into the other wall section as shown.



8. Repeat step 8 with the remaining end tab.
9. Glue floor section to wall tabs as shown.



We've found a way to attach the floor to the wall sections. To do this, fold the tabs flat, place glue on the side of the floor section and then attach it onto the tabs starting at one end and working out. Then turn the section over, apply glue to any tabs which haven't stuck to the floor section and reattach them.



10. Your Corner section should look like this:



ARID HILLS PRODUCTIONS

© Copyright Arid Hills Productions 2007

Large Right Angle Corner Wall Section One



ARID HILLS PRODUCTIONS

© Copyright Arid Hills Productions 2007

Large Right Angle Corner Wall Section Two



ARID HILLS PRODUCTIONS

© Copyright Arid Hills Productions 2007

Large T-Junction



Requirements: 3 Sheets of thin card (letter size or A4), tape or glue, craft knife or scissors

A dotted line indicates a fold line

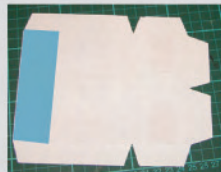
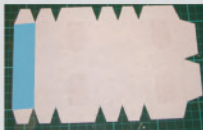
Instructions

1. Print the Large Floor Sections, Large T-Junction Wall Sections One and Two sheets onto the sheets of card (for best results use the high quality print setting).

2. Carefully cut around the Large T-Junction Floor section (keep the rest of the floor sections to make other models) and the two Wall sections making sure that you don't cut any tabs off.



3. Carefully score along fold lines.
4. Glue the rear sides of the wall sections making sure that you don't glue in the blue shaded area shown below both sections.



5. Fold the wall sections so that they are now double sided and decide whether you wish to use any of the door variants or if you wish to have open or removed doors to create openings. If you wish to add door variants, follow the instructions found later in this document.

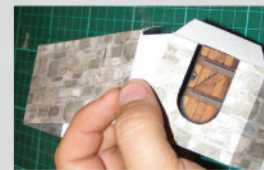


If you decide to have open doors or arches make sure that the glue is dry before you cut around the door. If you don't, the paper or card may tear and spoil the look of the door.

6. Fold along all wall section fold lines as shown.



7. Next, join the two wall sections together by gluing an end tab and inserting it into the other wall section as shown.



8. Repeat step seven with the remaining end tab.
9. Glue floor section to wall tabs as shown.



We've found the easiest way to attach the floor to the wall tabs is to fold the tabs flat, place glue on the underside of the floor section and to carefully lower it onto the tabs starting at one end and working out. Then turn the section over, apply glue to any tabs which haven't stuck to the floor section and reattach them.

10. Your T-Junction section should look like this:



ARID HILLS PRODUCTIONS

© Copyright Arid Hills Productions 2007

Large T-Junction Wall Section Part One



ARID HILLS PRODUCTIONS

© Copyright Arid Hills Productions 2007

Large T-Junction Wall Section Part Two



ARID HILLS PRODUCTIONS

© Copyright Arid Hills Productions 2007

Large Crossroads



Requirements: 3 Sheets of thin card (letter size or A4), tape or glue, craft knife or scissors

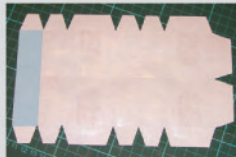
A dotted line indicates a fold line

Instructions

1. Print the Large Floor Sections sheet once and two copies of the Large Crossroads Wall Section sheet onto the sheets of card (for best results use the high quality print setting).
2. Carefully cut around the Large Crossroads Floor section (keep the rest of the floor sections to make other models) and the two Wall sections making sure that you don't cut any tabs off.



3. Carefully score along fold lines.
4. Glue the rear sides of the wall sections making sure that you don't glue in the blue shaded area shown below.



5. Fold the wall sections so that they are now double sided and decide whether you wish to use any of the door variants or if you wish to have open or removed doors to create openings. If you wish to add door variants, follow the instructions found later in this document. The wall sections below have an open archway, two standard wooden doors and a steel door variant.



If you decide to have open doors or arches make sure that the glue is dry before you cut around the door. If you don't, the paper or card may tear and spoil the look of the door.

6. Next, join the two wall sections together by gluing an end tab and inserting it into the other wall section as shown.



7. Fold along all wall section fold lines as shown.



8. Repeat step six with the remaining end tab.
9. Glue floor section to wall tabs as shown.



We've found the easiest way to attach the floor to the wall tabs is to fold the tabs flat, place glue on the underside of the floor section and to carefully lower it onto the tabs starting at one end and working out. Then turn the section over, apply glue to any tabs which haven't stuck to the floor section and reattach them.

10. Your Crossroads section should look like this:



ARID HILLS PRODUCTIONS

© Copyright Arid Hills Productions 2007

Large Crossroads Wall Section



ARID HILLS PRODUCTIONS

© Copyright Arid Hills Productions 2007

Door Variants



Requirements: 1 Sheet of thin card (letter size or A4), tape or glue, craft knife or scissors

A dotted line indicates a fold line

Instructions

1. Follow the instructions for whichever piece of scenery you're making until the instructions refer you to this page. Decide if you want a different door or simply an archway. If you want an archway go to step 8.
2. Print out the Door Variants page (for best results use the high quality print setting).
3. Choose the door you wish to use and carefully cut it out.
4. You should now have a wall section and a door like the one below. We've decided to use a long wall section and the reinforced wooden door for this example.



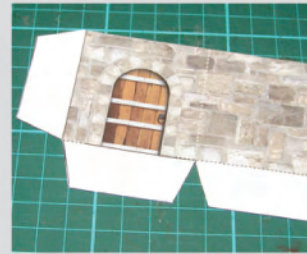
5. Carefully score along the door fold line.
6. Glue the rear side of the new door and carefully line it up with the existing door. The tab under the existing door is the same size as the tab on the new door so if you align these you shouldn't have any problems.



It's really important to get both sides lined up if you want to have the door open. If you don't get it right, when you cut around the door, you might end up with bits of stone or wood on the wrong side of your cut on one side

of the wall section and this will take away from the look of the door. If you don't intend to have open doors, then it doesn't really matter if you don't get it aligned quite right.

7. Once you've got it aligned, press the wall section down onto the door and then fold the door over. Your new door should now look like it's been there all along.



8. (Optional) If you want the door to open, cut along the edge of the door along the top, the side with the door handle or keyhole and the bottom. If you're cutting an arched door take your time with the top so that you don't accidentally damage the door or wall.



Make sure you don't cut down the wrong side of the door as it will look really strange if the keyhole is on the side which hinges or if the hinges don't attach to the wall.

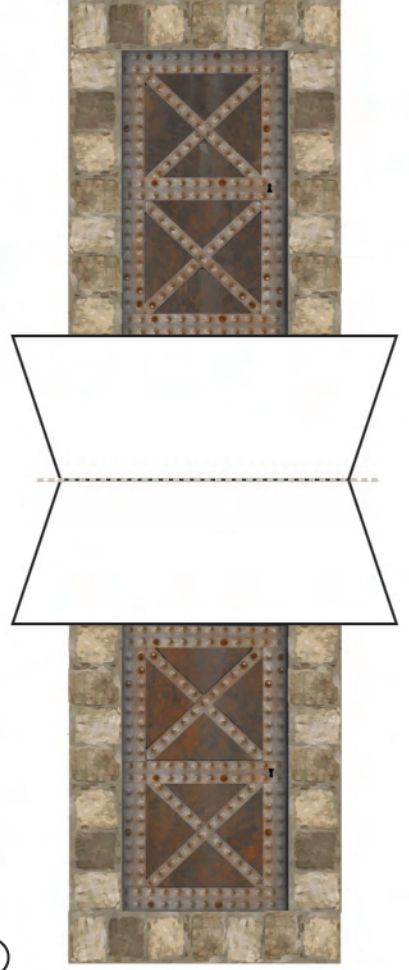
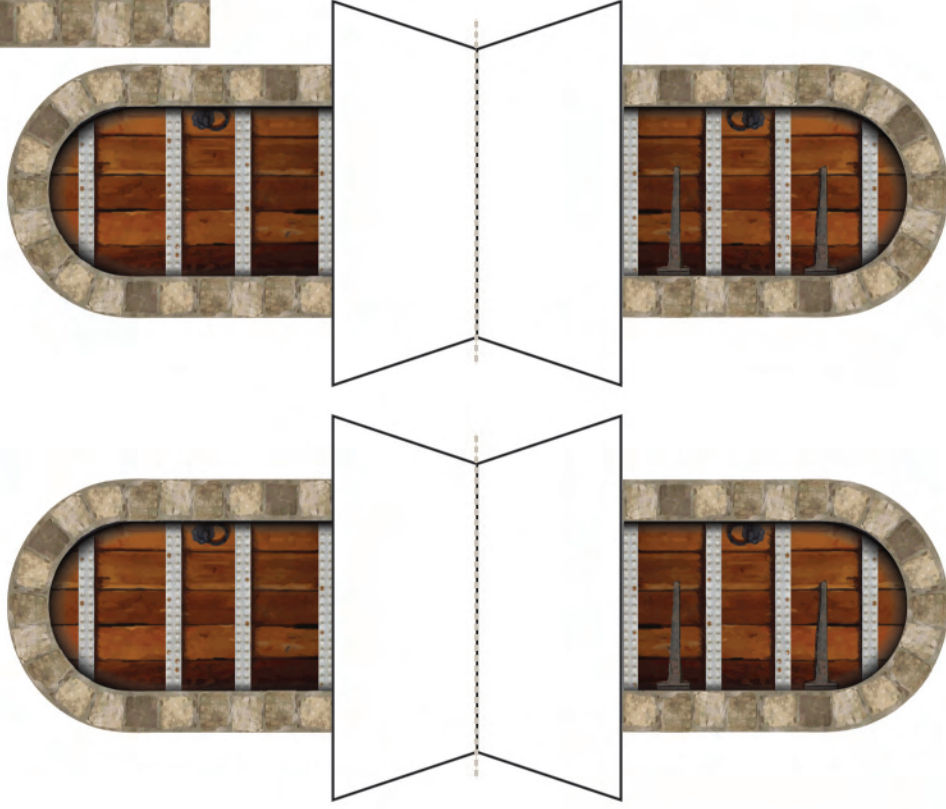
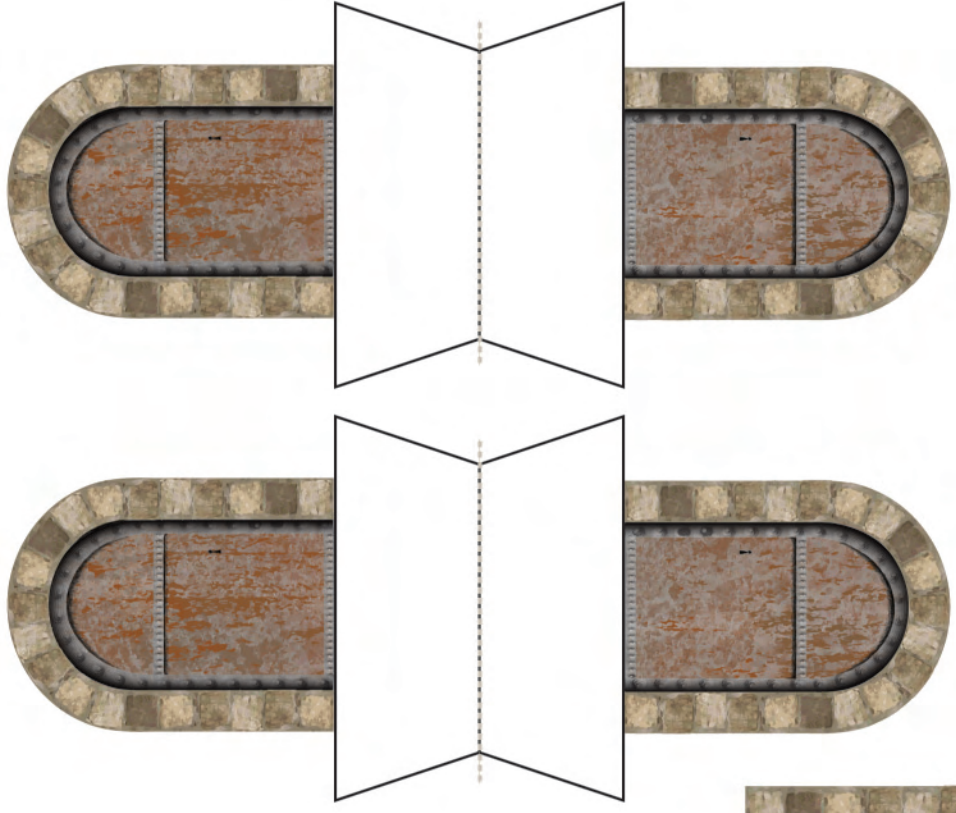
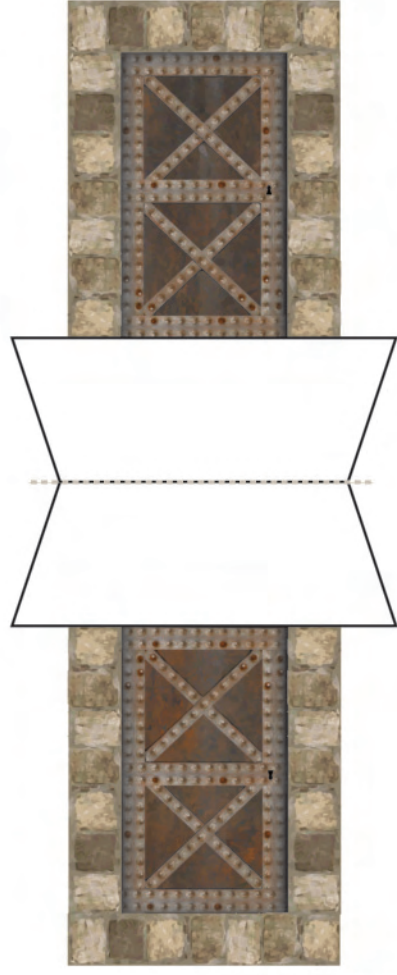
10. If you want an archway, just continue all the way around the door.
11. Continue on with the instructions for whichever piece of scenery you were making.



ARID HILLS PRODUCTIONS

© Copyright Arid Hills Productions 2007

Door Variants



Right Angle Corner



Large Floor Sections



Crossroads



T-Junction



ARID HILLS PRODUCTIONS

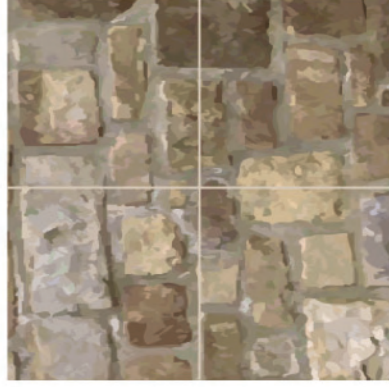
© Copyright Arid Hills Productions 2007

Corridor and Small Floor Sections

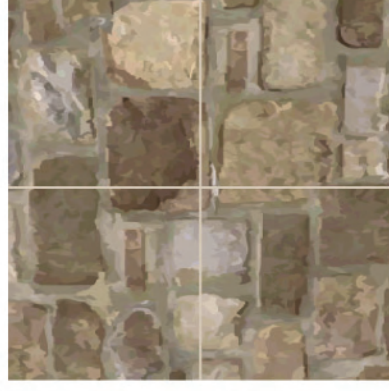
Short Corridor



Small Crossroads



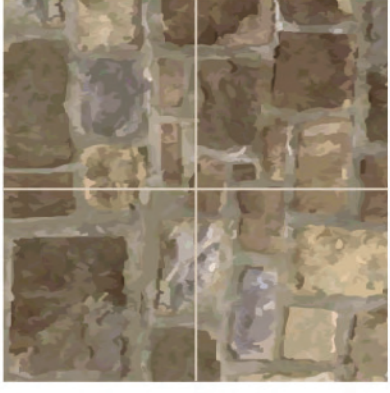
Small Right Angle



Long Corridor



Small T-Junction





ARID HILLS PRODUCTIONS

© Copyright Arid Hills Productions 2007

Large Corner

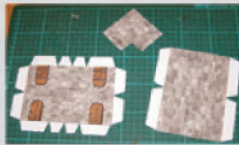


Requirements: 3 Sheets of thin card (letter size or A4), tape or glue, craft knife or scissors

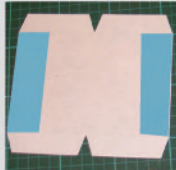
A dotted line indicates a fold line

Instructions

1. Print the Large Floor Sections, Large Right Angle Corner Wall Sections One and Two sheets onto the sheets of card (for best results use the high quality print setting).
2. Carefully cut around the Large Right Angle Corner Floor section (keep the rest of the floor sections to make other models) and the two Wall sections making sure that you don't cut any tabs off.



3. Carefully score along fold lines.
4. Glue the rear sides of the wall sections making sure that you don't glue in the blue shaded area shown below on the section without doors.



5. Fold the wall sections so that they are now double sided and decide whether you wish to use any of the door variants or if you wish to have open or removed doors to create openings. If you wish to add door variants, follow the instructions found later in this document. The wall sections below have a standard wooden door and a steel door variant.

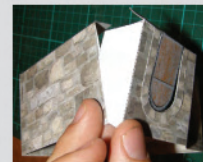


If you decide to have open doors or arches make sure that the glue is dry before you cut around the door. If you don't, the paper or card may tear and spoil the look of the door.

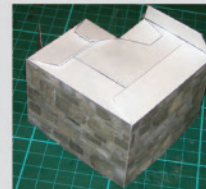
6. Fold along all wall section fold lines as shown.



7. Next, join the two wall sections together by gluing an end tab and inserting it into the other wall section as shown.



8. Repeat step seven with the remaining end tab.
9. Glue floor section to wall tabs as shown.



We've found the easiest way to attach the floor to the wall tabs is to fold the tabs flat, place glue on the underside of the floor section and to carefully lower it onto the tabs starting at one end and working out. Then turn the section over, apply glue to any tabs which haven't stuck to the floor section and reattach them.

10. Your Corner section should look like this:



ARID HILLS PRODUCTIONS

© Copyright Arid Hills Productions 2007