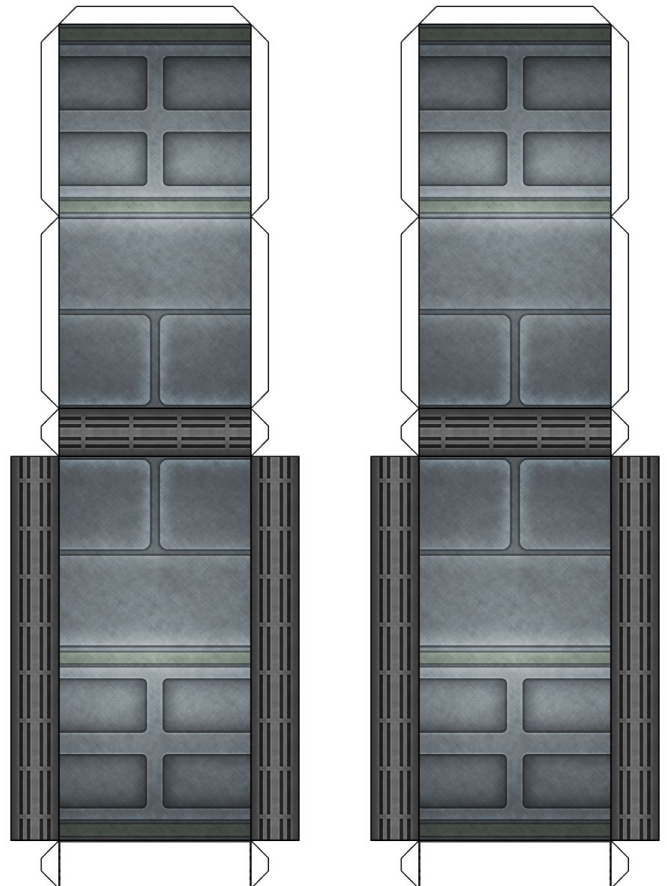
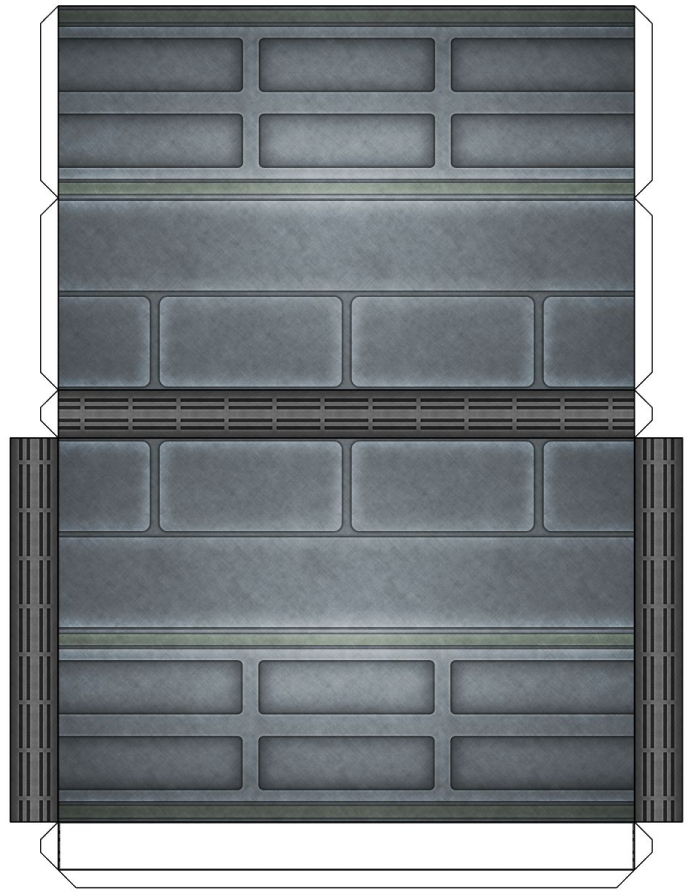
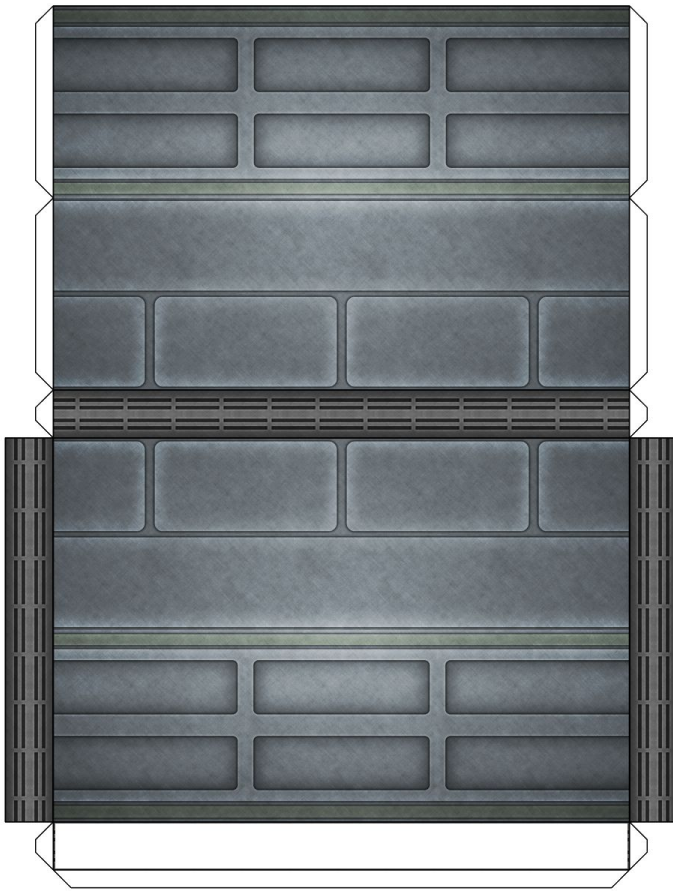


### 1 inch wall sections, Type 1

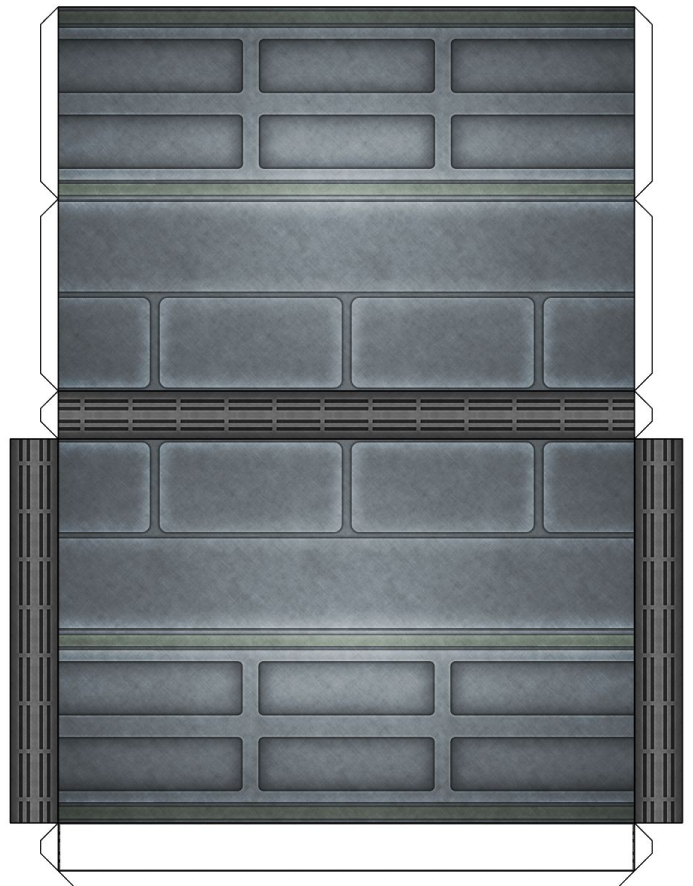
Use these to create corridors or join long wall sections which are joined by connectors on an opposing side. Glue the assembled wall section to the white area on the floor tiles.

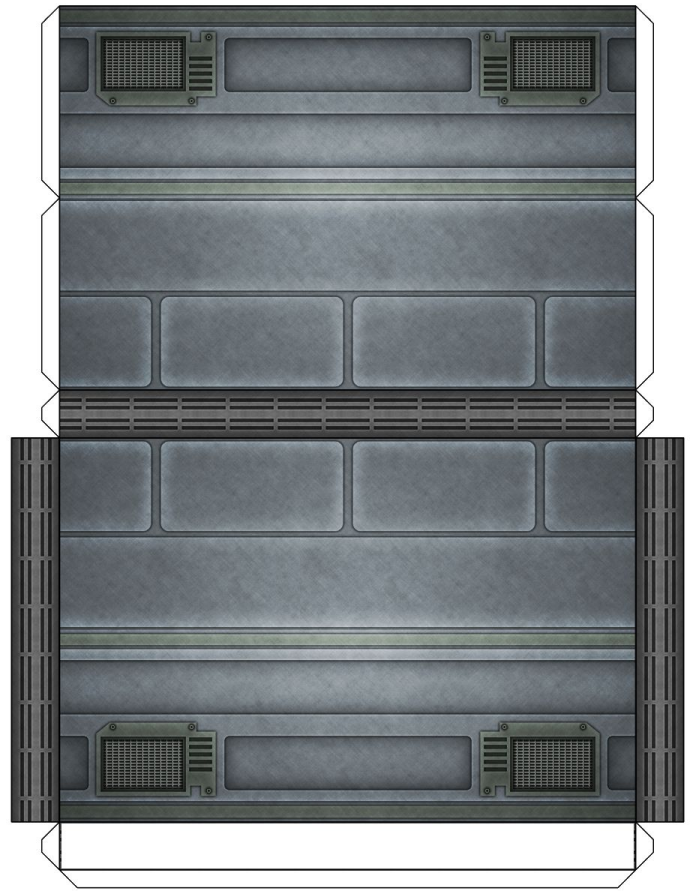
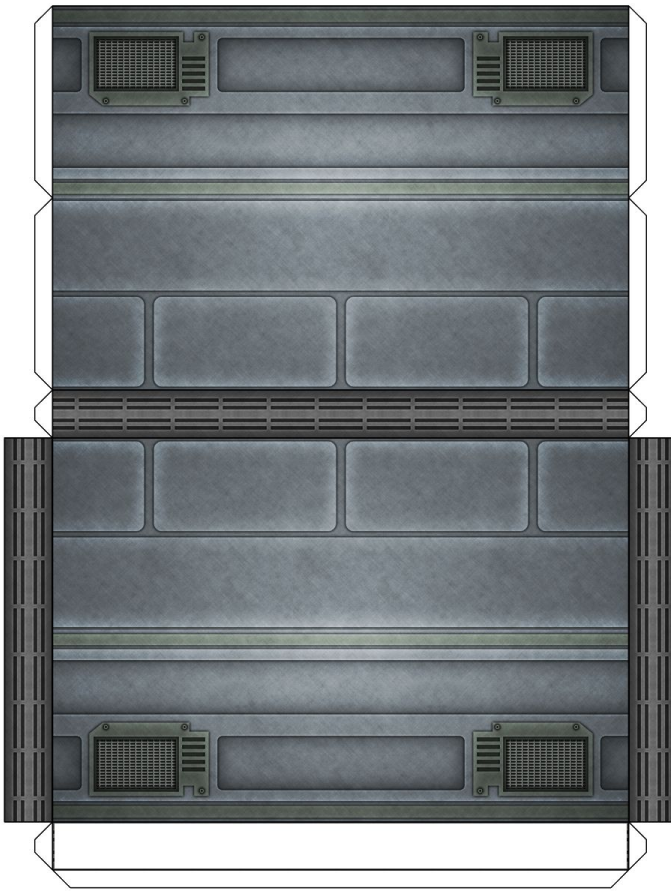




### 3 inch wall sections, Type 1

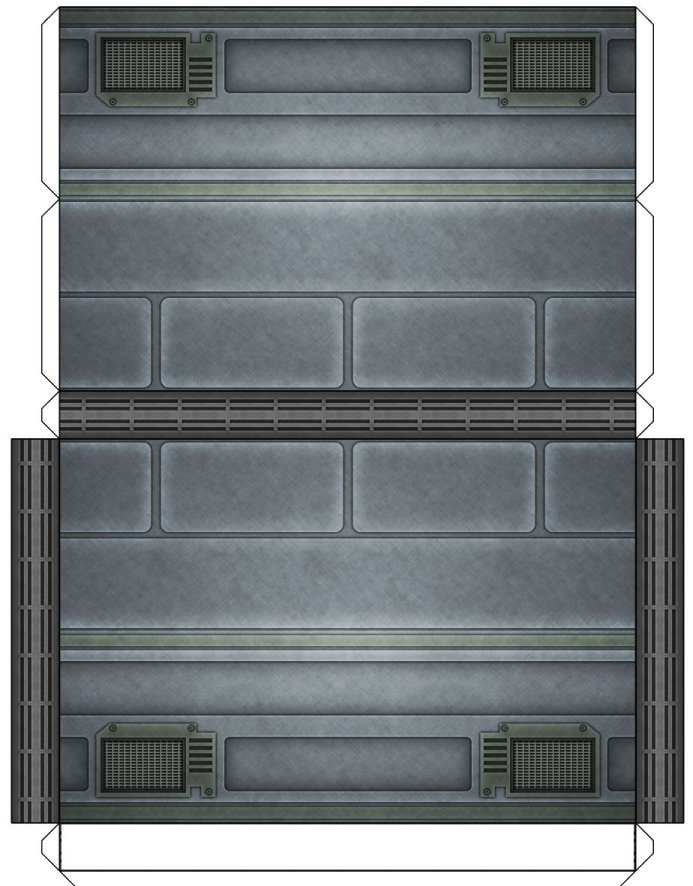
Use these as walls when you plan to use wall-mounted decorations. Glue the assembled wall section to the white area on the floor tiles.

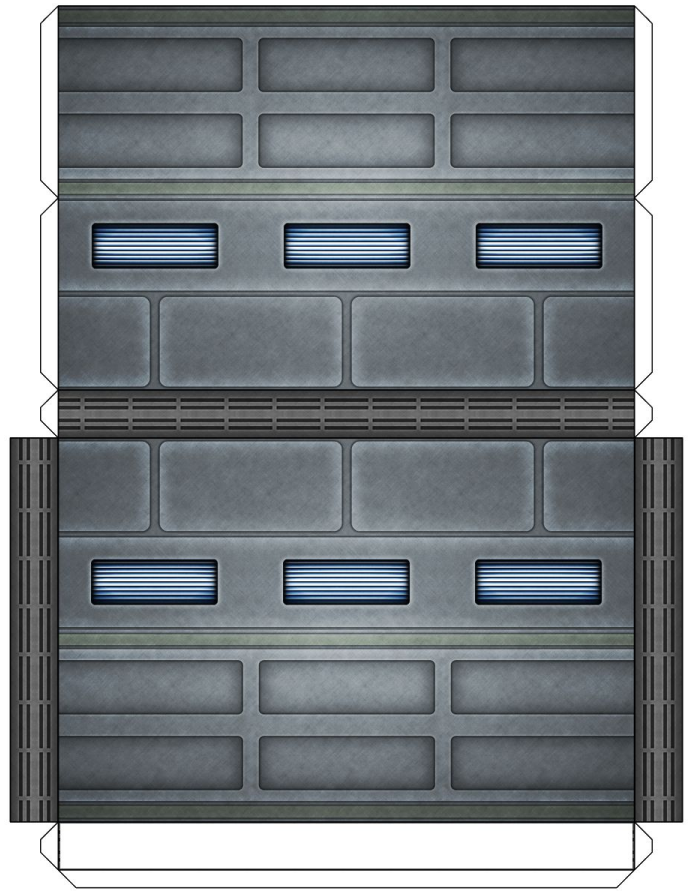
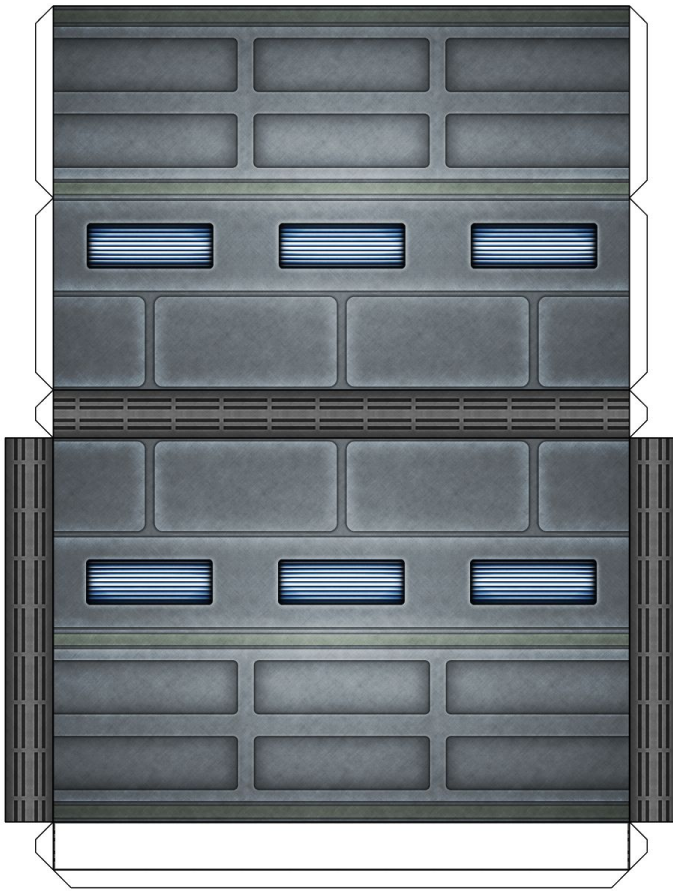




### 3 inch wall sections, Type 2

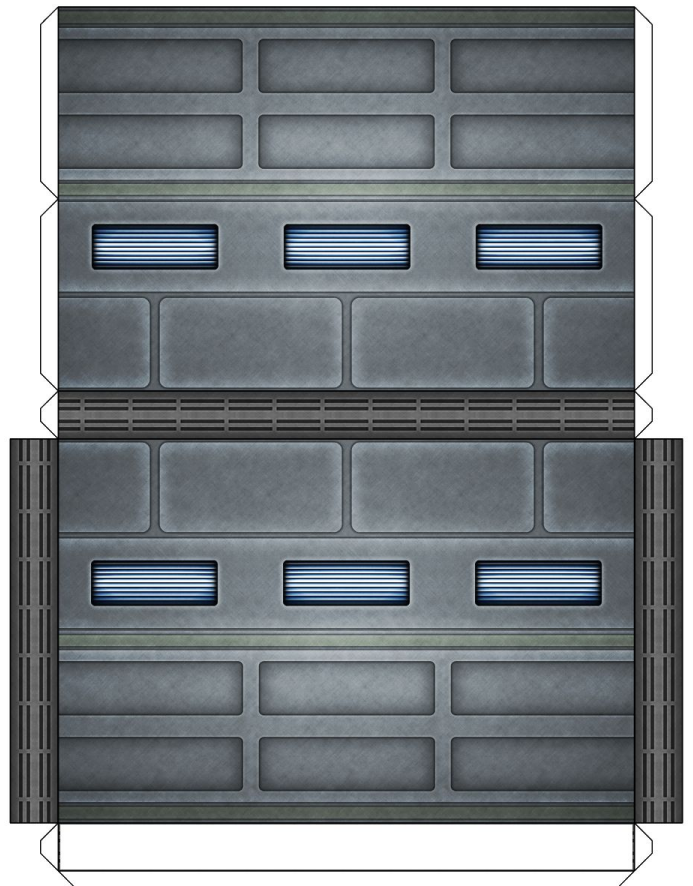
Use these as walls when you plan to use decorations that are glued to the upper wall or to liven up a room built from Type 1 walls. Glue the assembled wall section to the white area on the floor tiles.

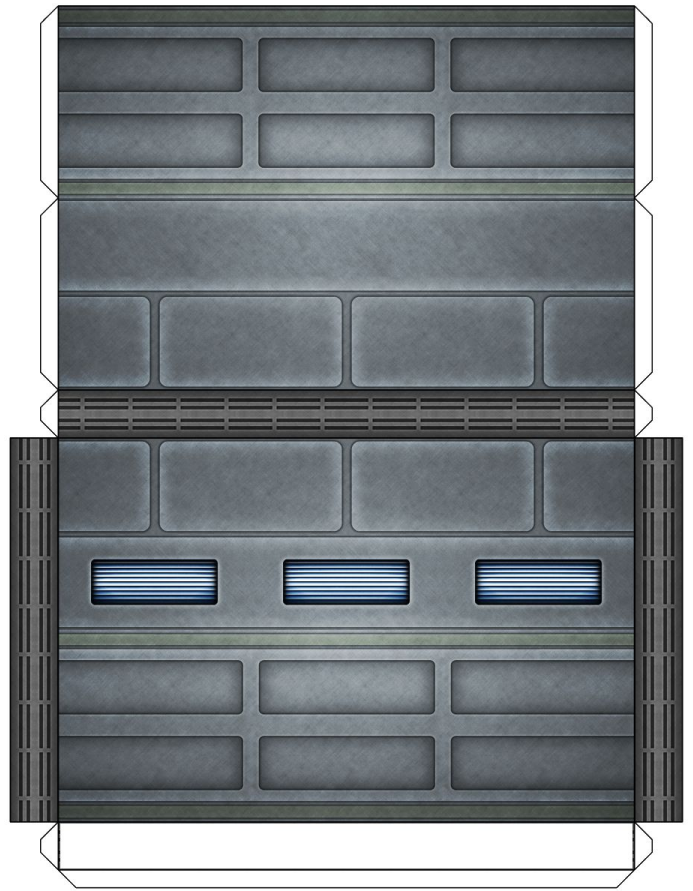
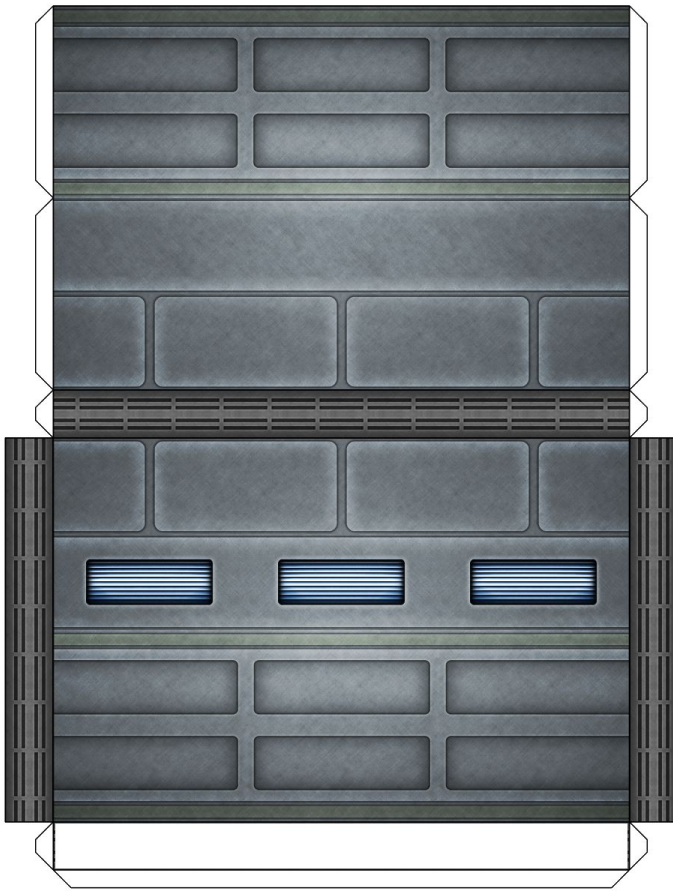




### 3 inch wall sections, Type 3

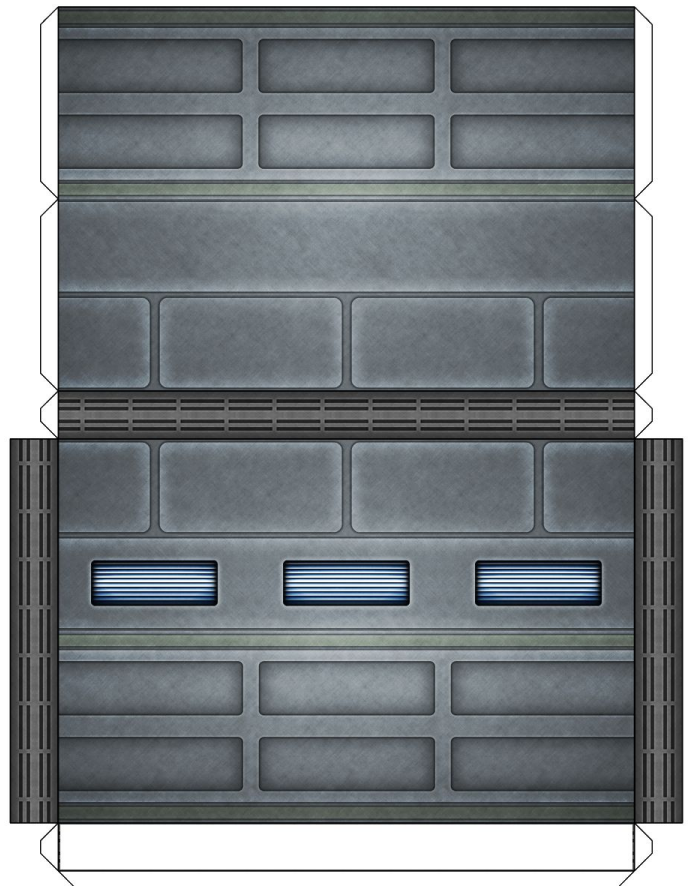
Use these as walls for corridors, or to add more detail to otherwise bland rooms. Glue the assembled wall section to the white area on the floor tiles.

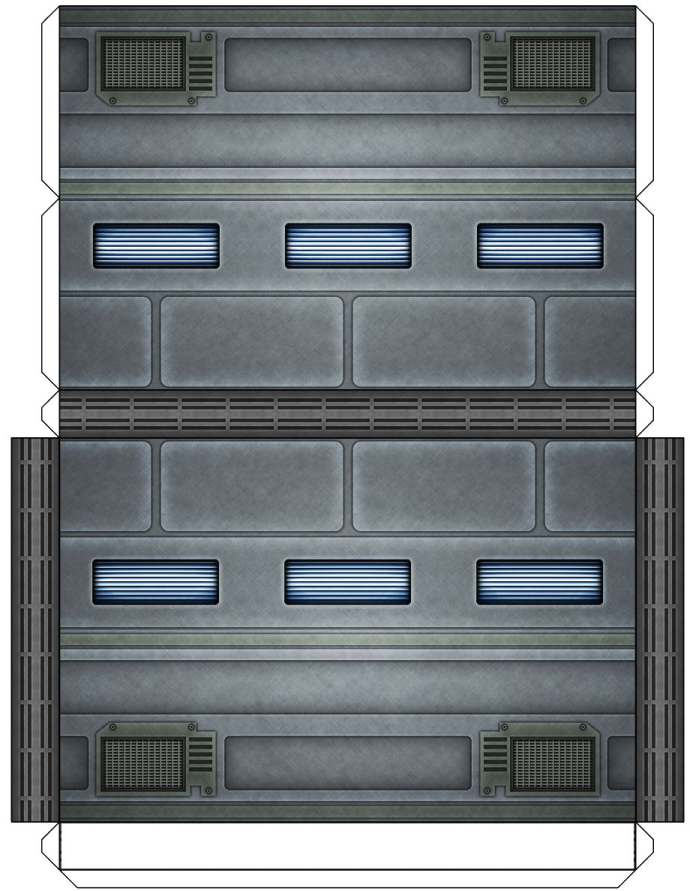
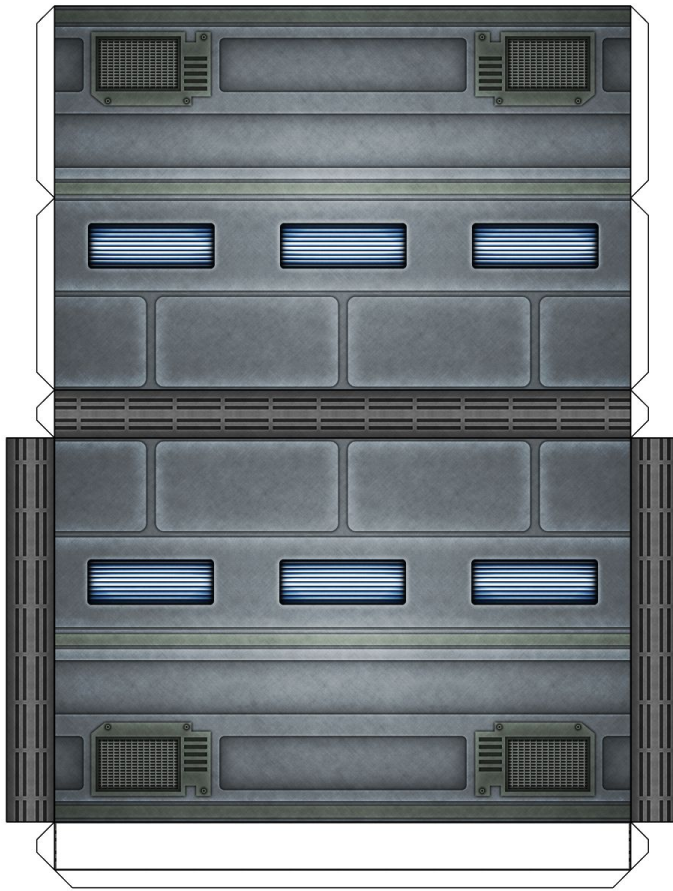




### 3 inch wall sections, Type 4

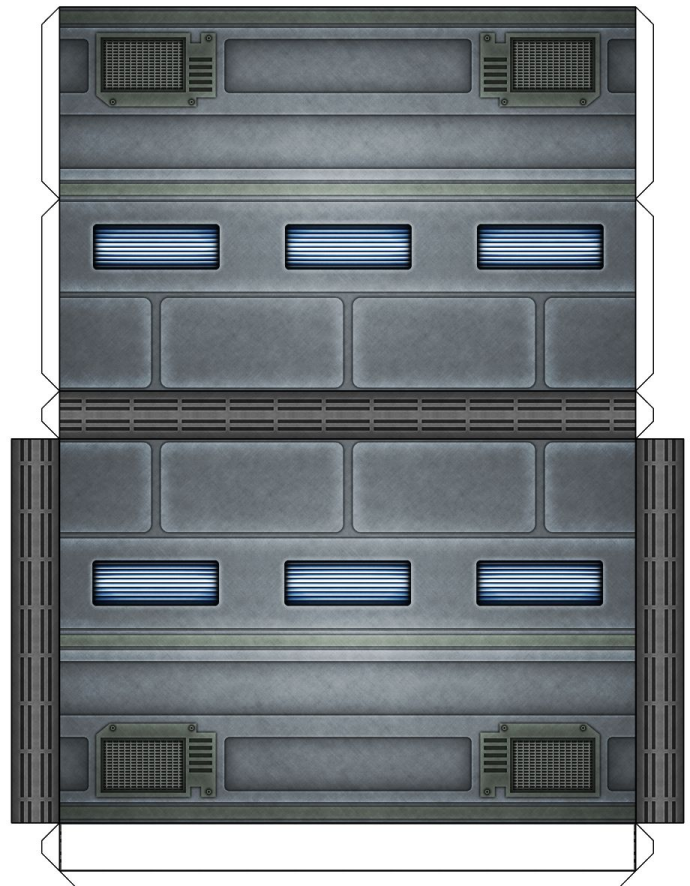
Use these as walls for corridors, or to add more detail to otherwise bland rooms. Glue the assembled wall section to the white area on the floor tiles.

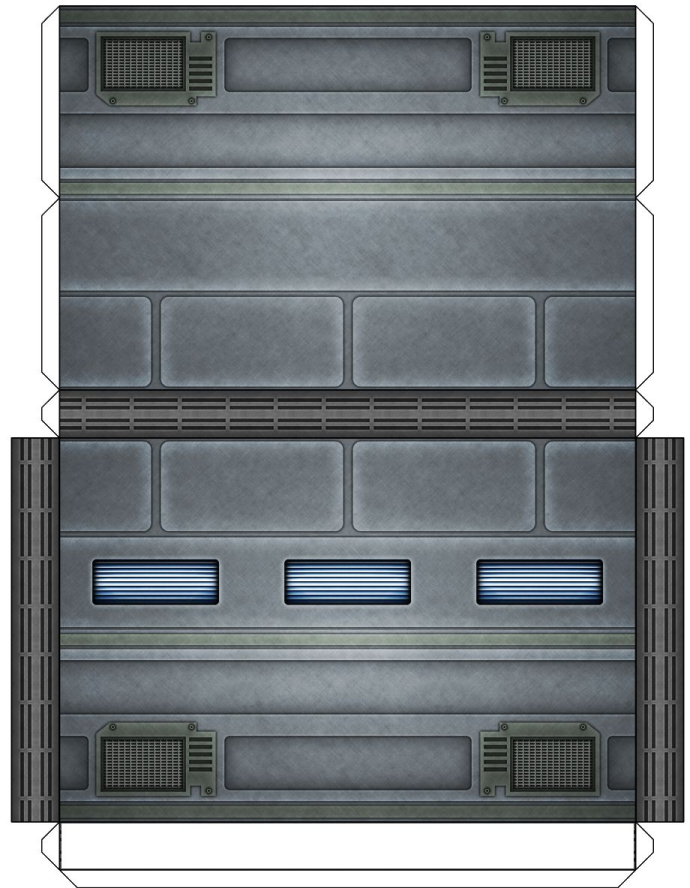
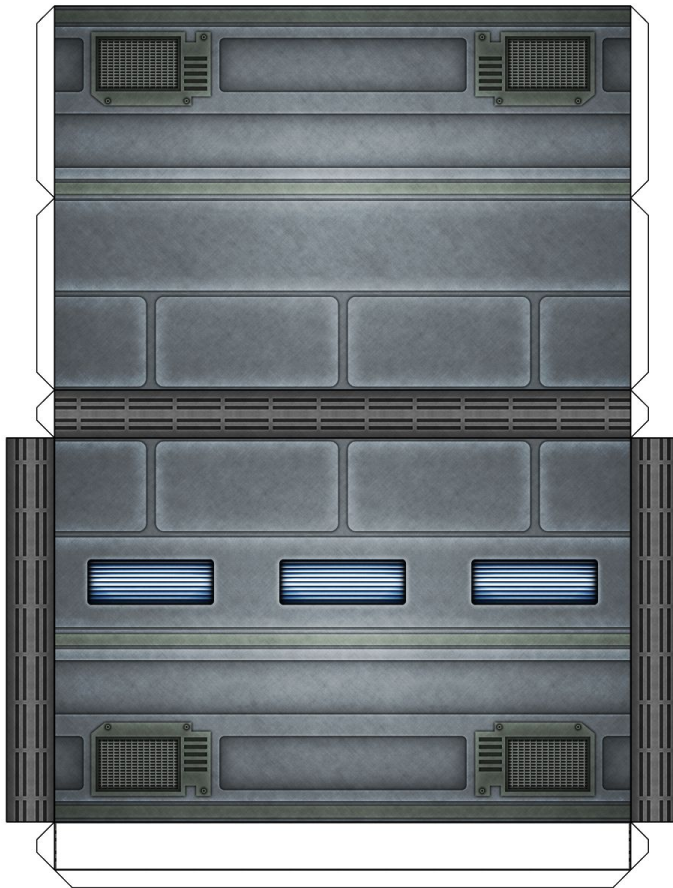




### 3 inch wall sections, Type 5

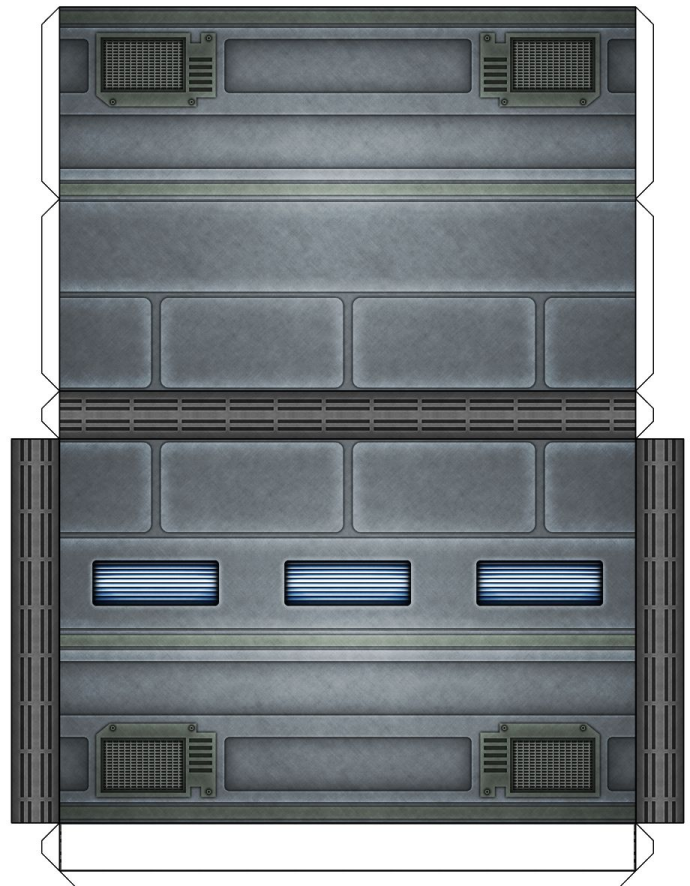
This wall complements Type 3 and 4 walls in the same way that Type 2 walls complement Type 1 walls. Glue the assembled wall section to the white area on the floor tiles.

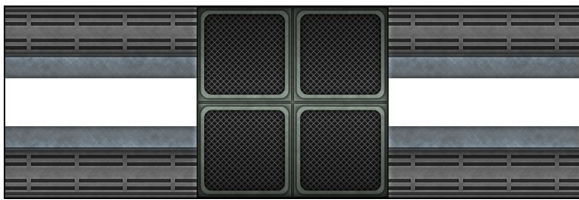
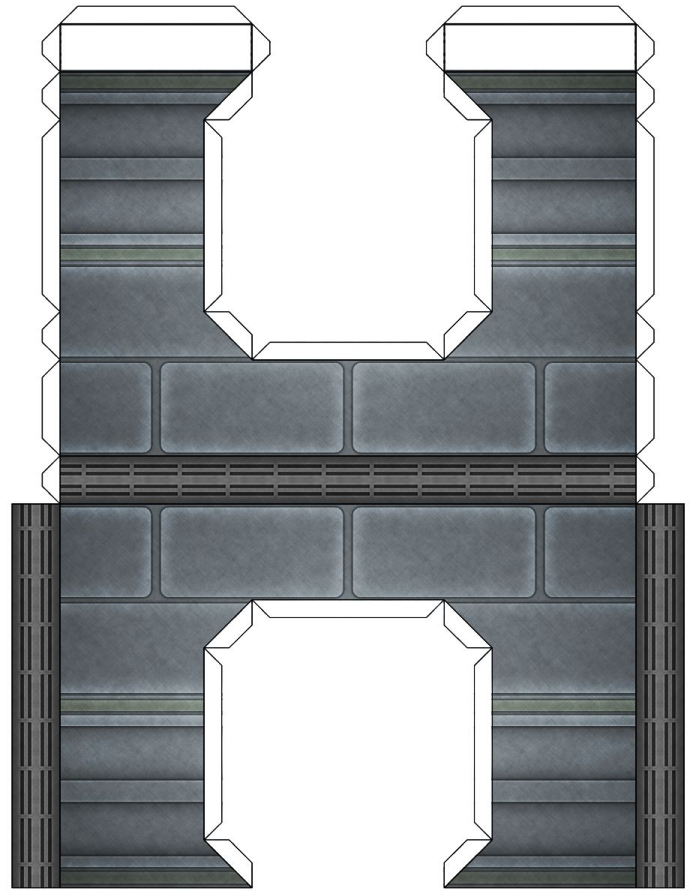
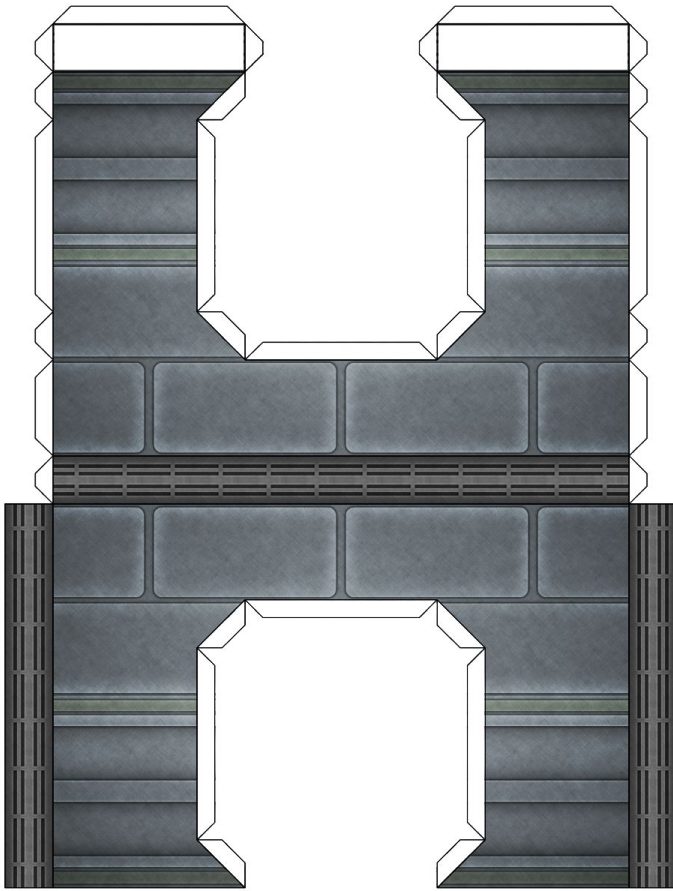




### 3 inch wall sections, Type 6

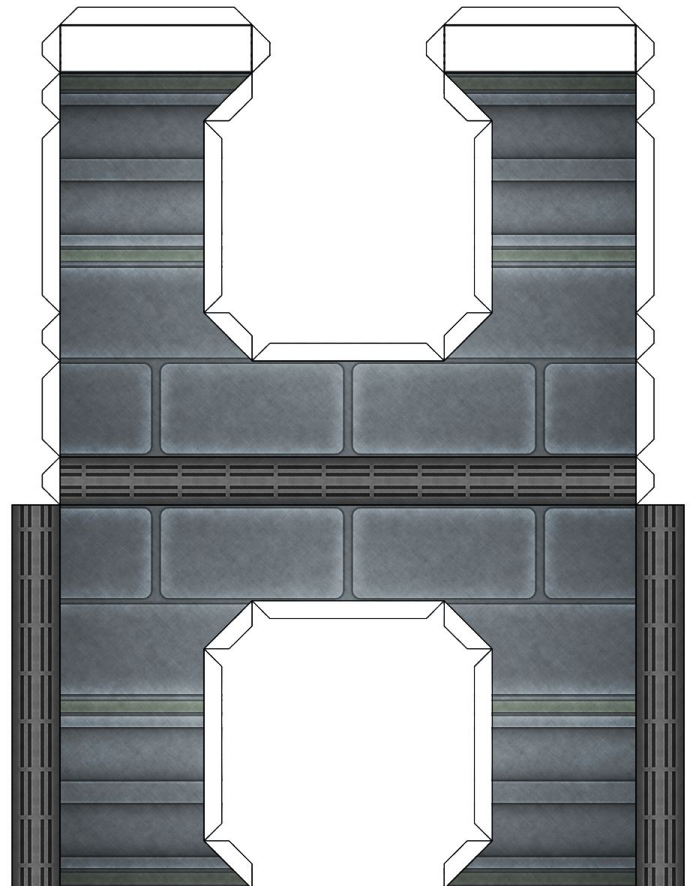
This wall complements Type 3 and 4 walls in the same way that Type 2 walls complement Type 1 walls. Glue the assembled wall section to the white area on the floor tiles.

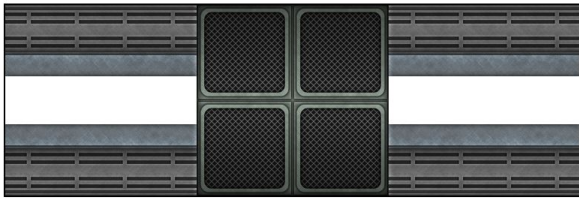
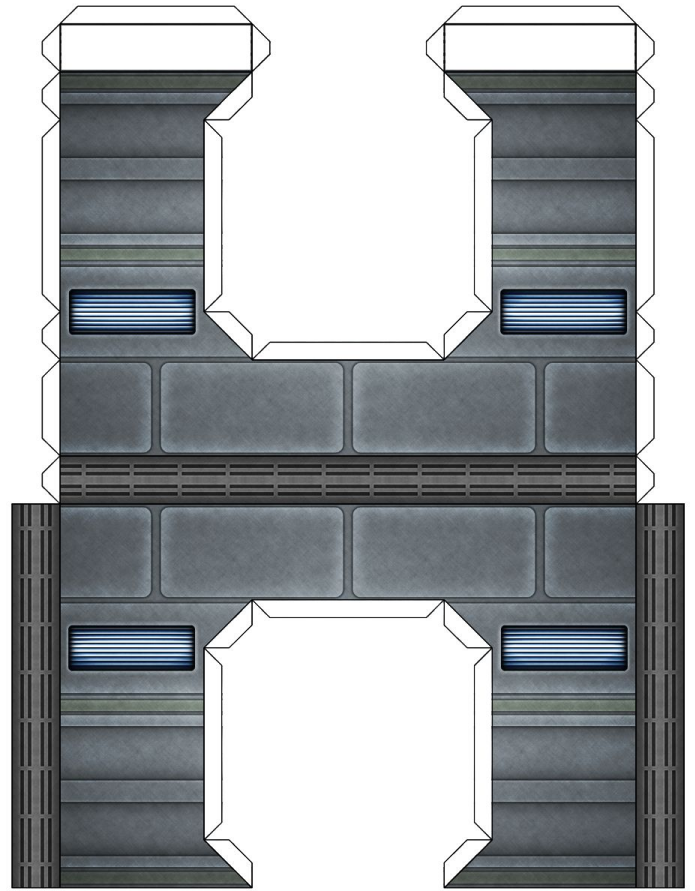
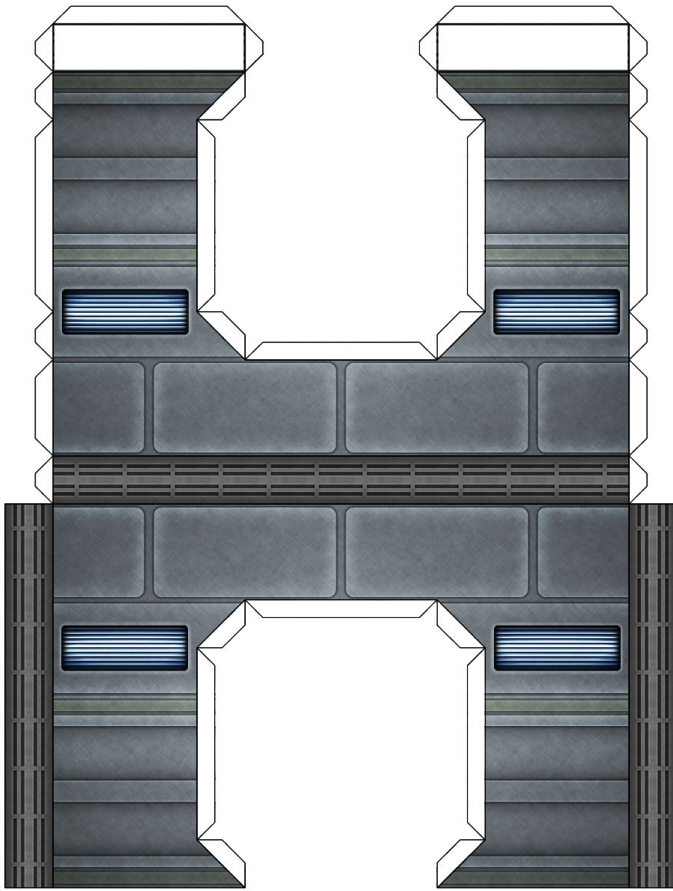




### 3 inch wall sections, Type 7

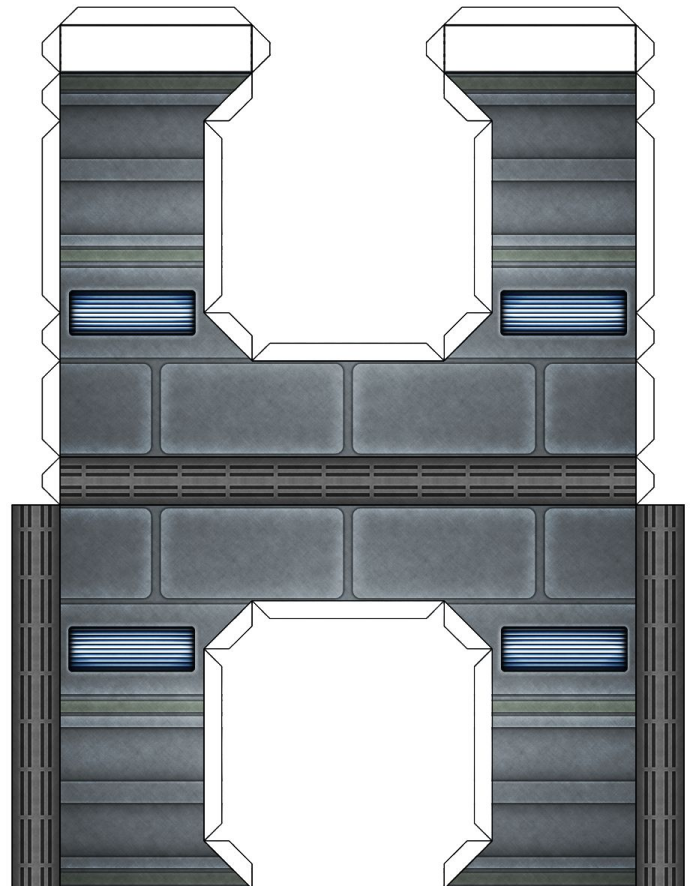
Use this wall when you need a doorway. Glue a short door trim strip to the interior of the doorway, and then glue the assembled wall section to the white area on the floor tiles. Add a door if desired.

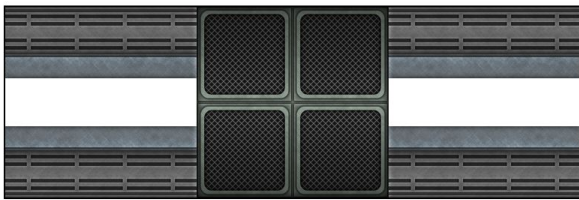
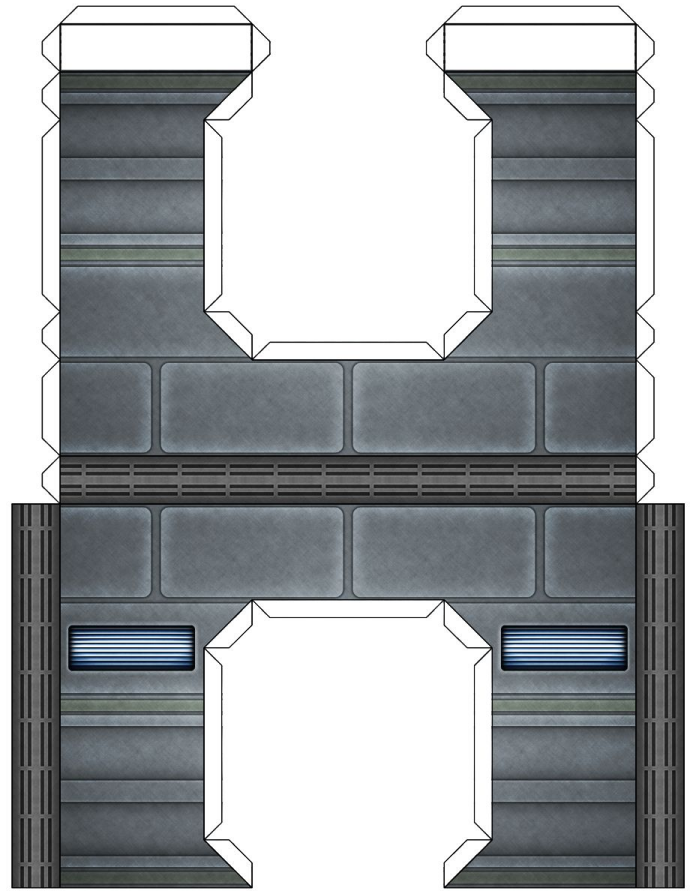
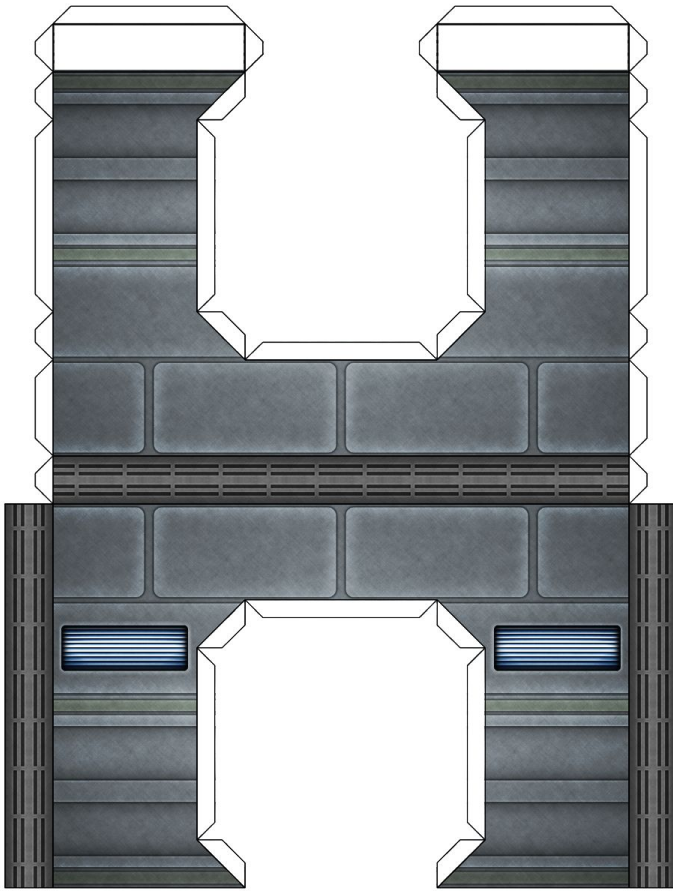




### 3 inch wall sections, Type 8

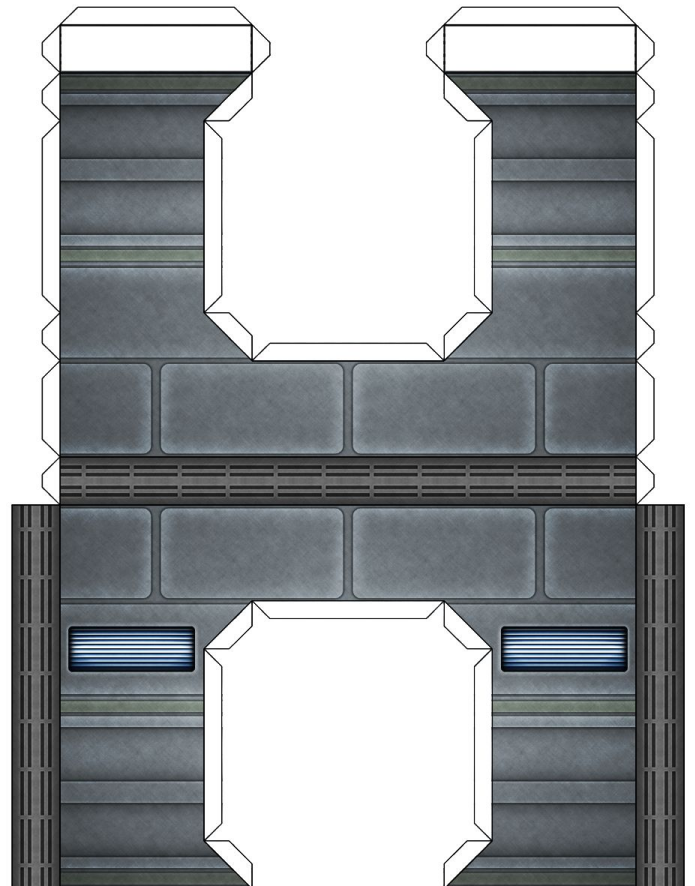
Use this wall when you need a doorway. Glue a short door trim strip to the interior of the doorway, and then glue the assembled wall section to the white area on the floor tiles. Add a door if desired.

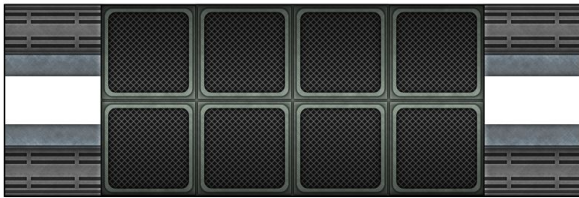
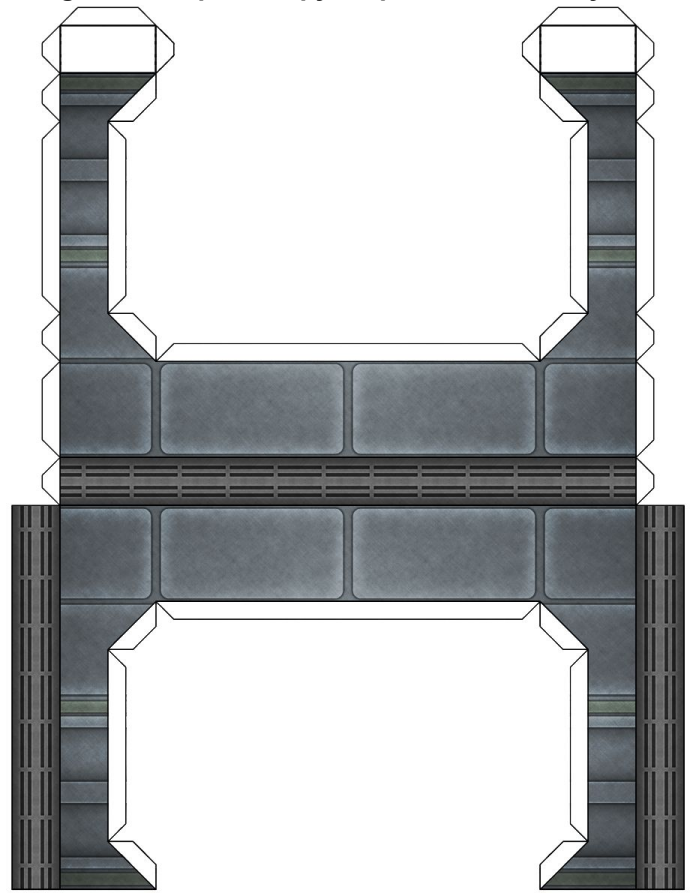
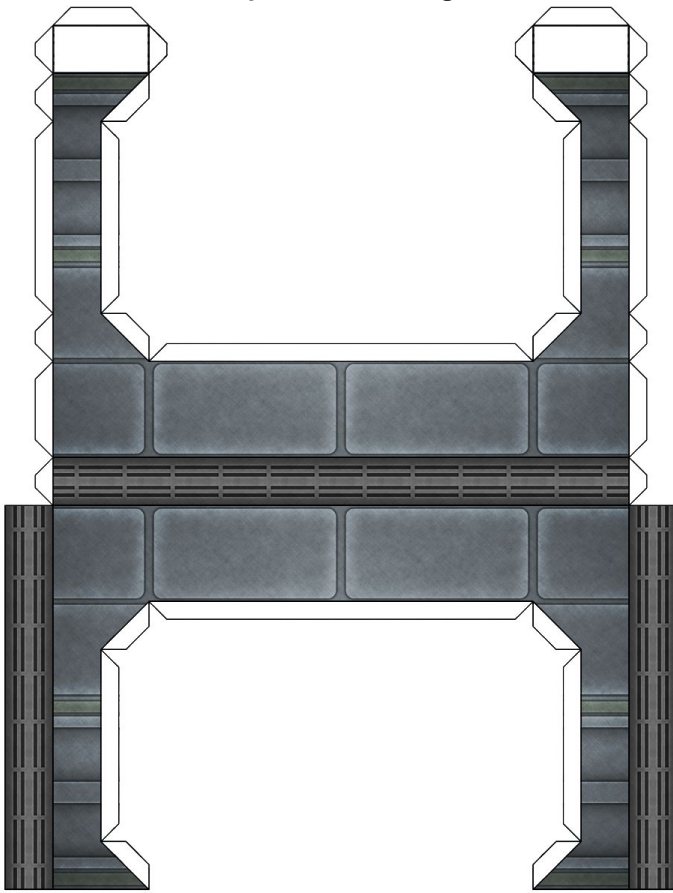




### 3 inch wall sections, Type 9

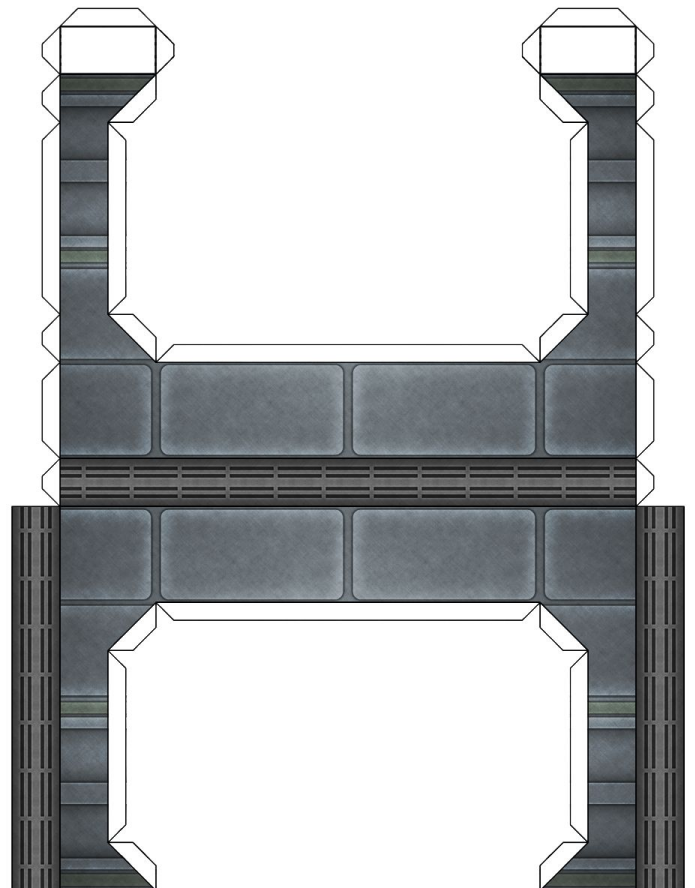
Use this wall when you need a doorway. Glue a short door trim strip to the interior of the doorway, and then glue the assembled wall section to the white area on the floor tiles. Add a door if desired.

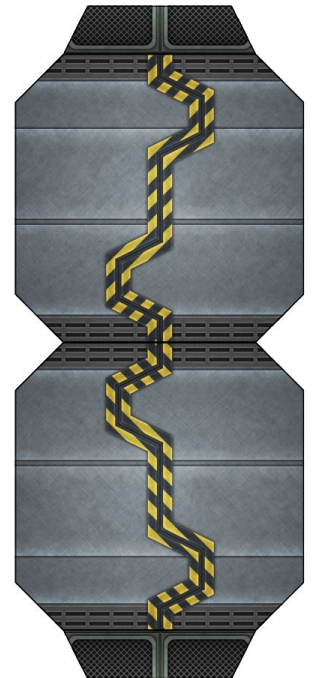
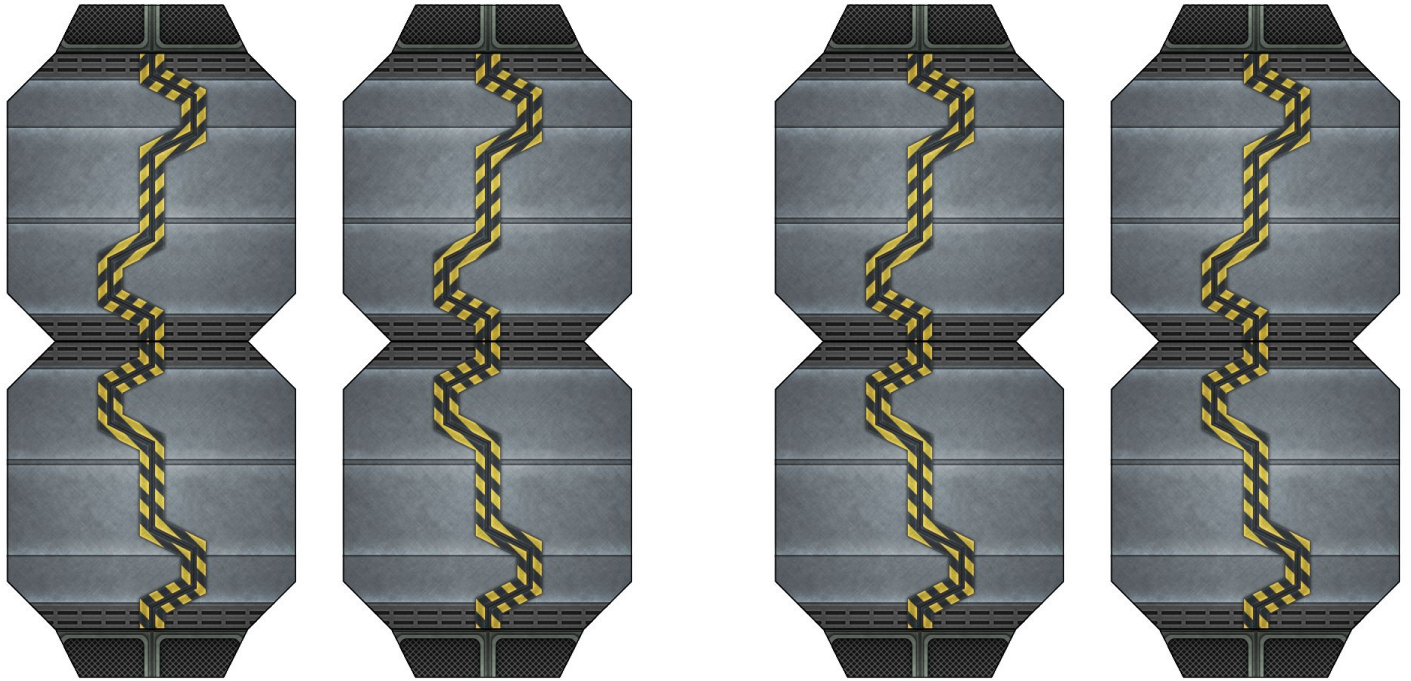




### 3 inch wall sections, Type 10

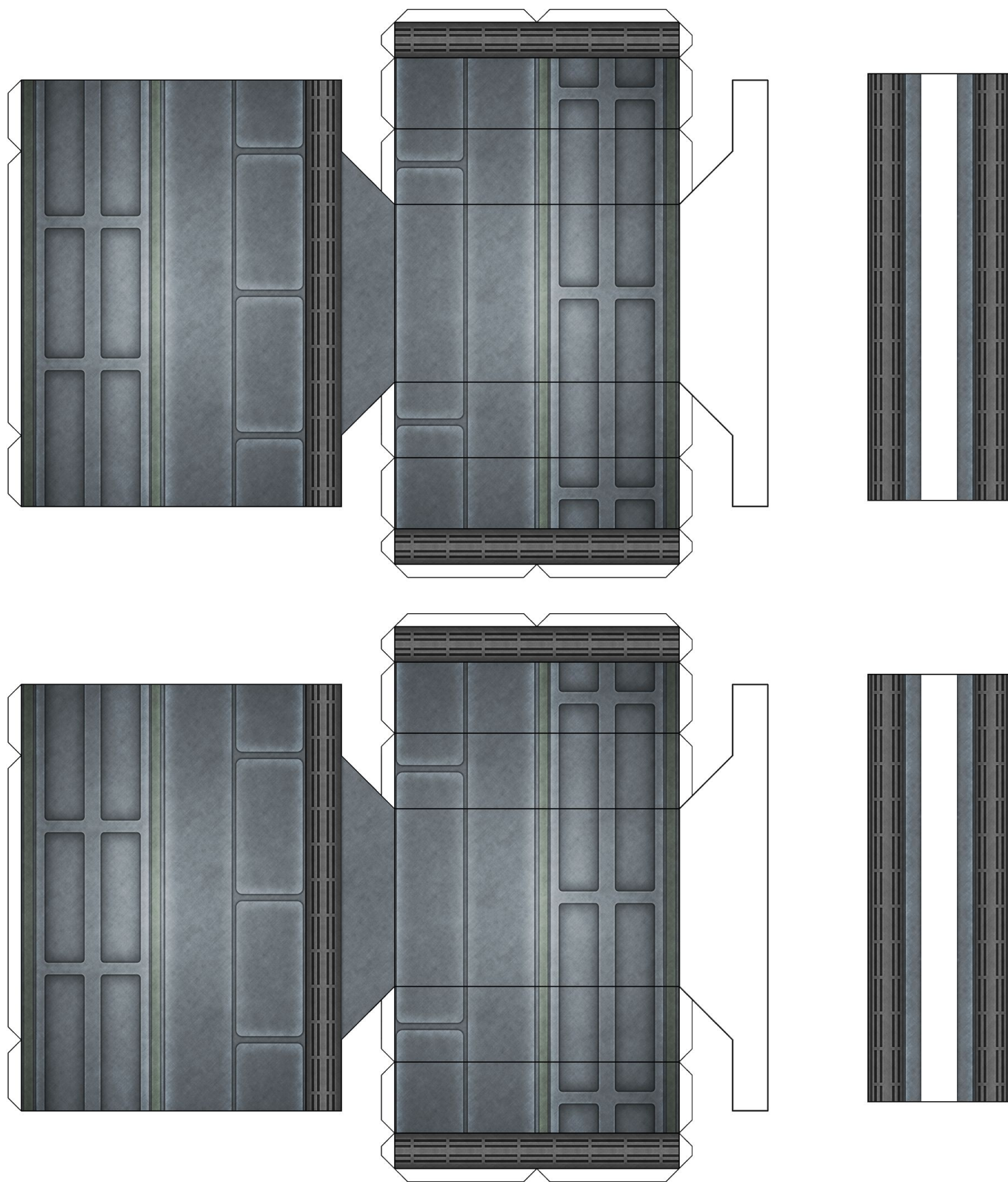
Use this wall when you need a long arch. Glue a long door trim strip to the interior of the arch, and then glue the assembled wall section to the white area on the floor tiles.





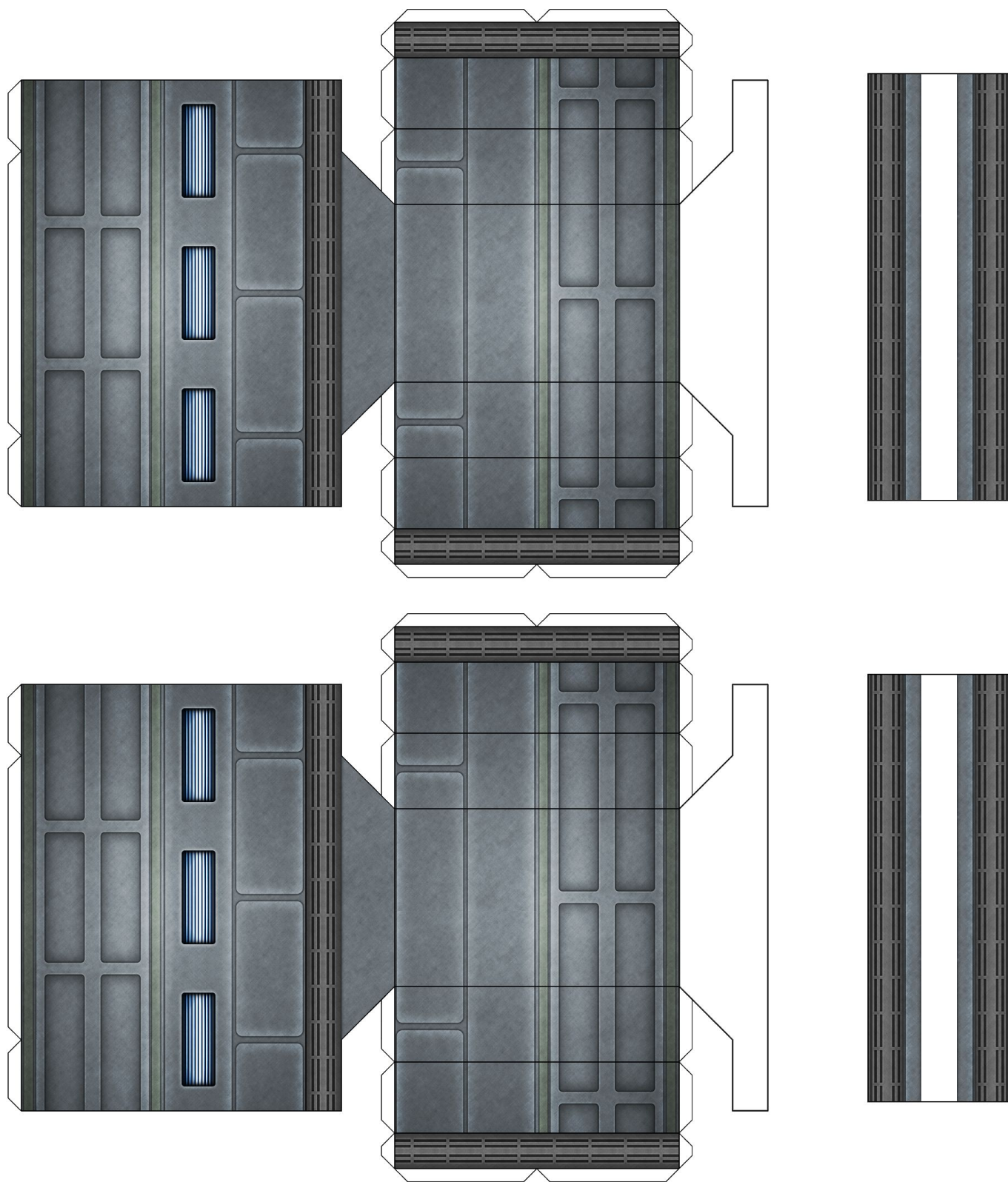
### Doors and Door Trim

Use these pieces to finish off the various doorway elements according to the instructions on the appropriate pages.



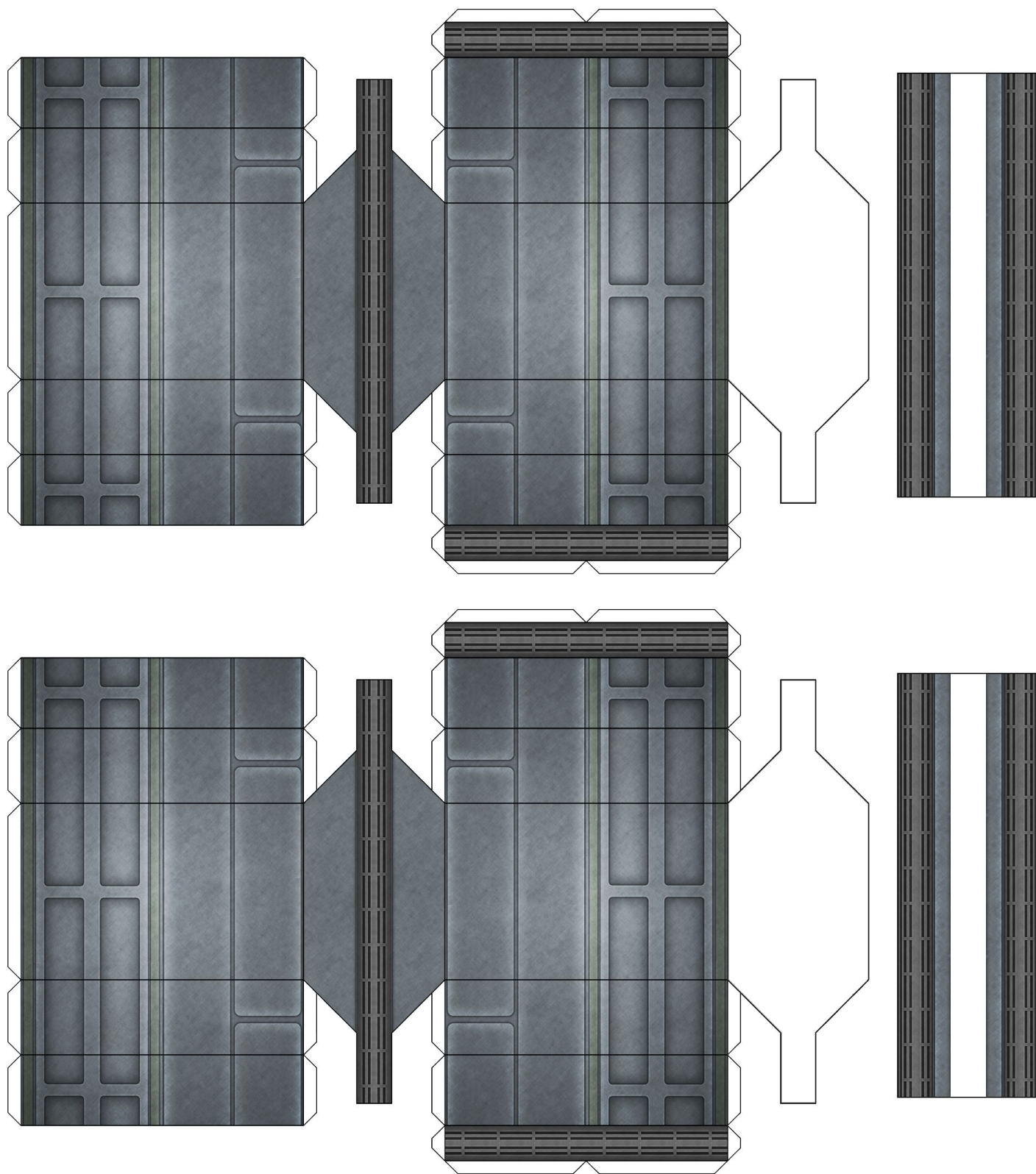
### 3 inch wall sections, Type 11

Use this wall when you need a room that looks different, such as an objective room. Glue the assembled wall section to the white area on the floor tiles.



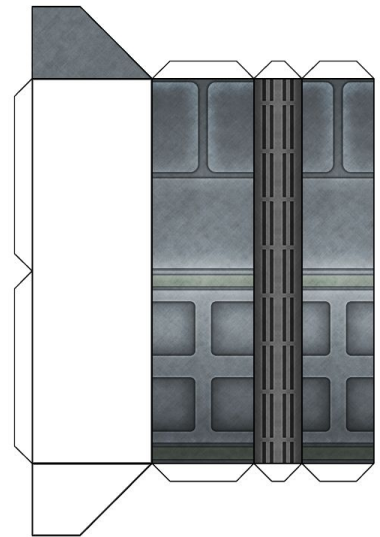
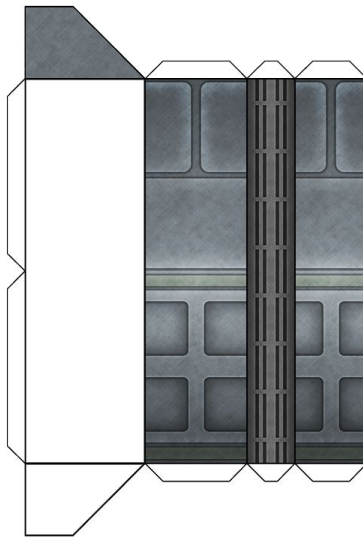
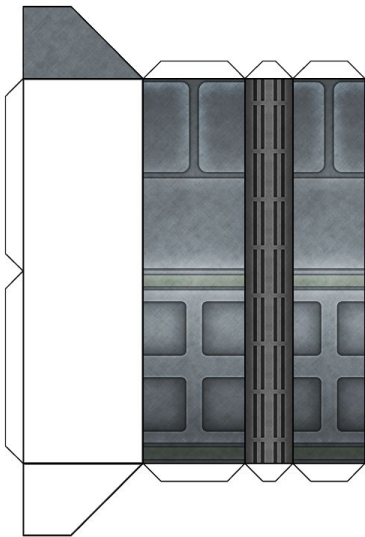
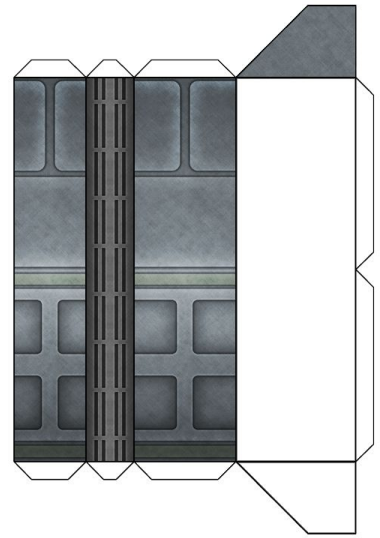
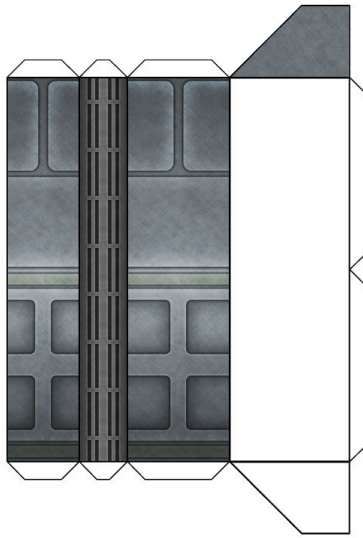
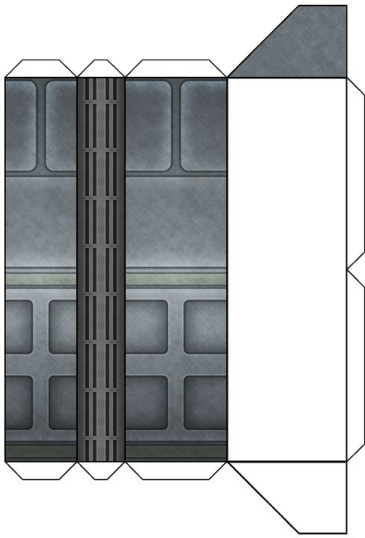
### 3 inch wall sections, Type 12

Use this wall when you need a room that looks different, such as an objective room. Glue the assembled wall section to the white area on the floor tiles.



### 3 inch wall sections, Type 13

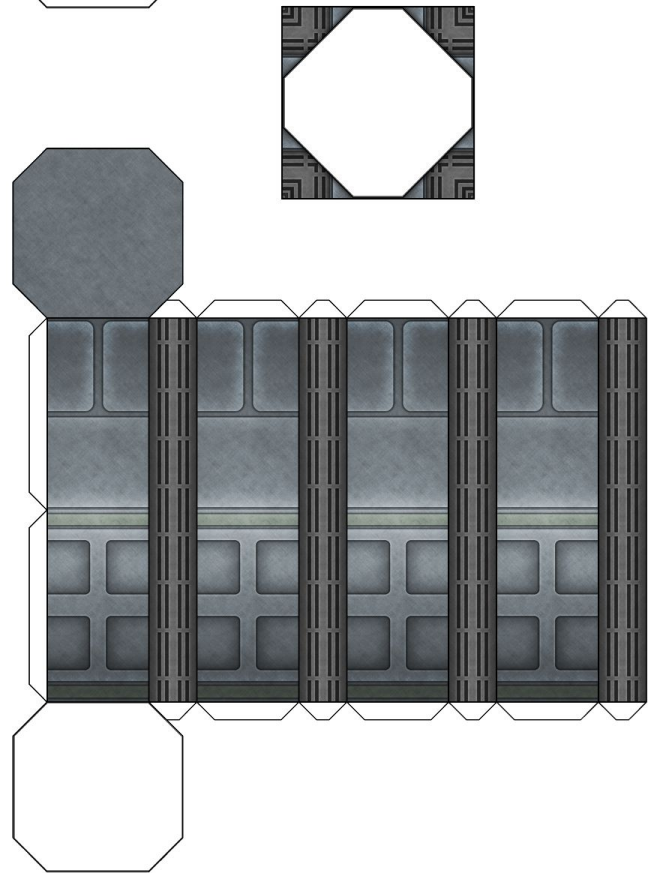
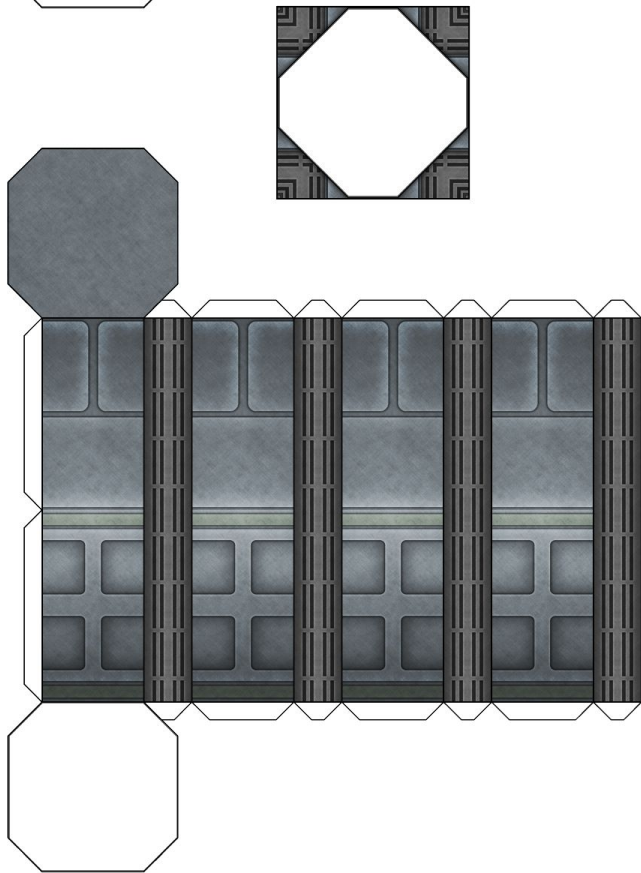
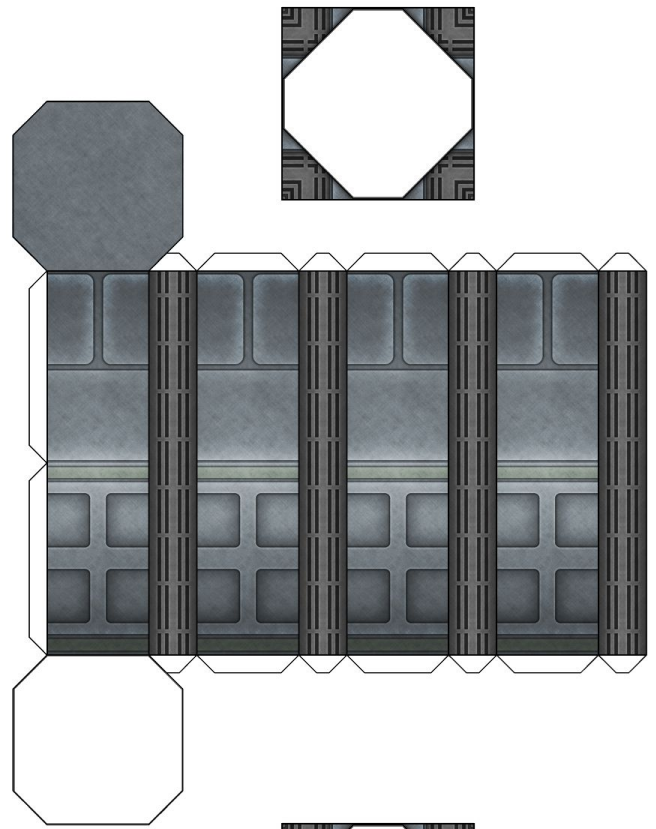
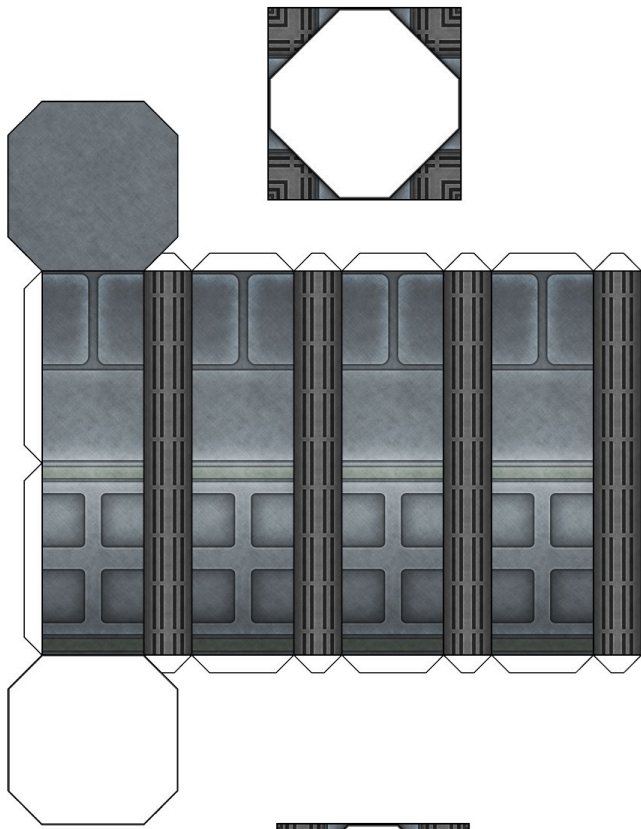
Use this wall when you need a room that looks different, such as an objective room, or to create a wall that adjoins two rooms with other special walls. Glue the assembled wall section to the white area on the floor tiles.



### Corridor Adapters

Use these adapters and floor tiles when you want to create corridors that join separated rooms, and which have a doorway on each end. Glue any of the 1 tile wide doorway pieces to the straight white area on the floor tiles, and glue the left/right bottleneck adapters to the white polygonal areas.





### X Connectors

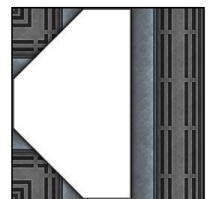
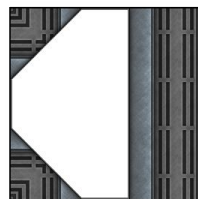
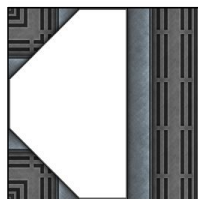
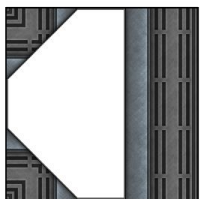
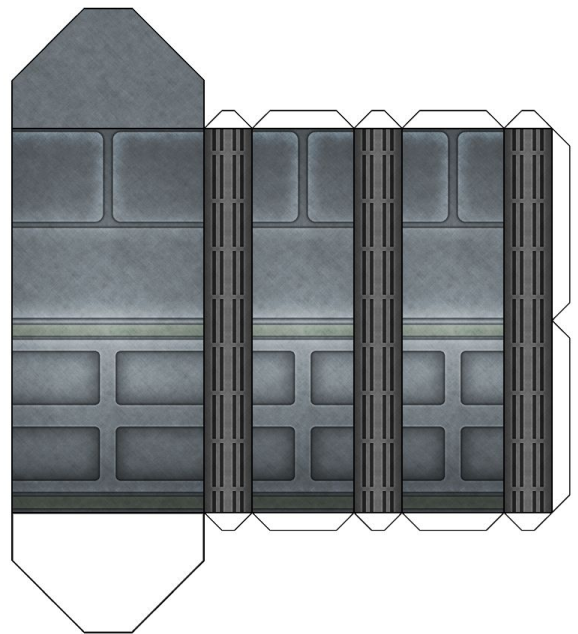
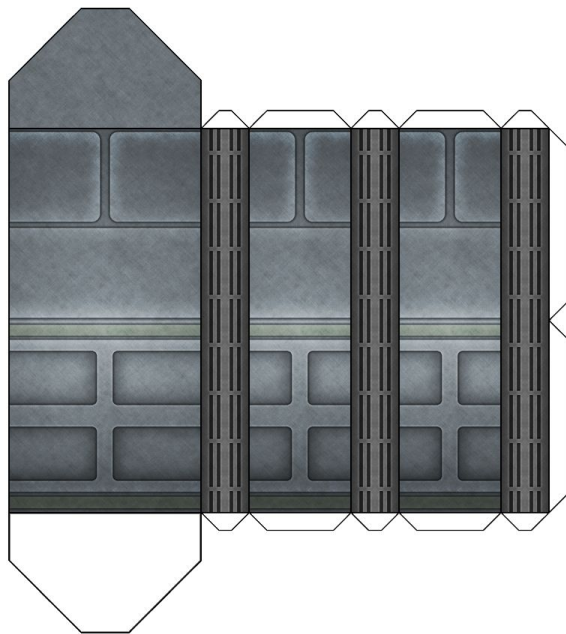
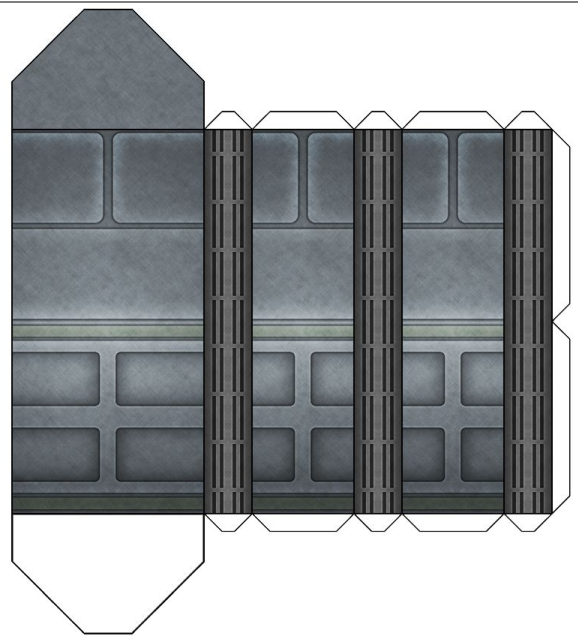
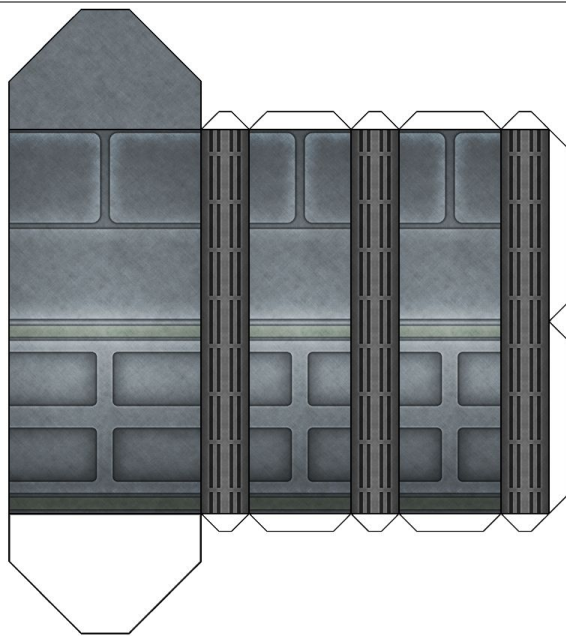
Use these connectors and floor tiles when you want to join multiple rooms that share the same walls. Glue the assembled connector to the white area on the floor tile.



### L Connectors

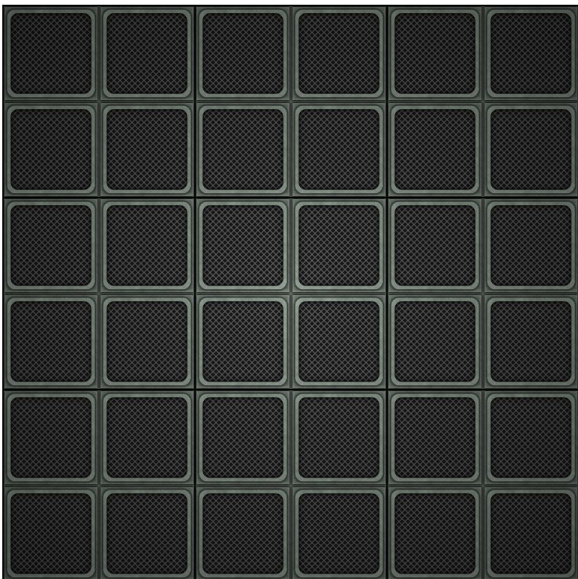
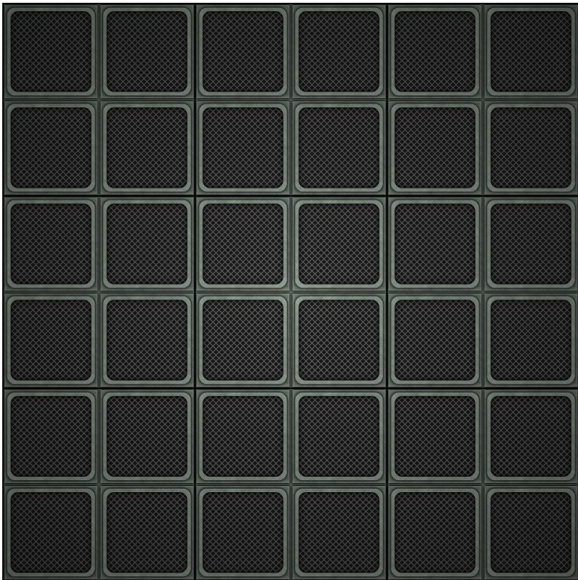
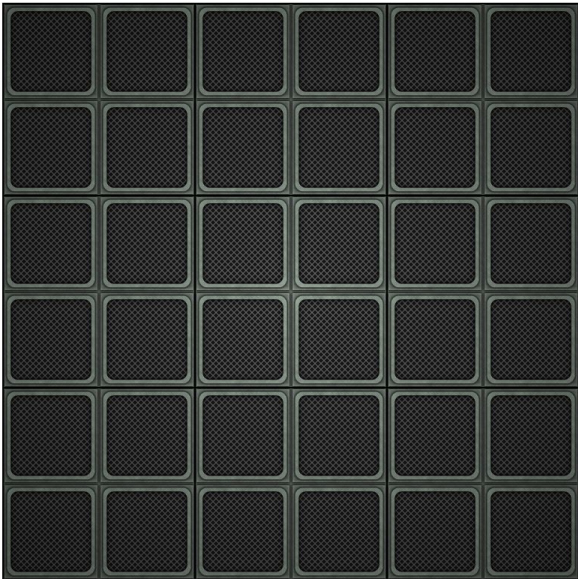
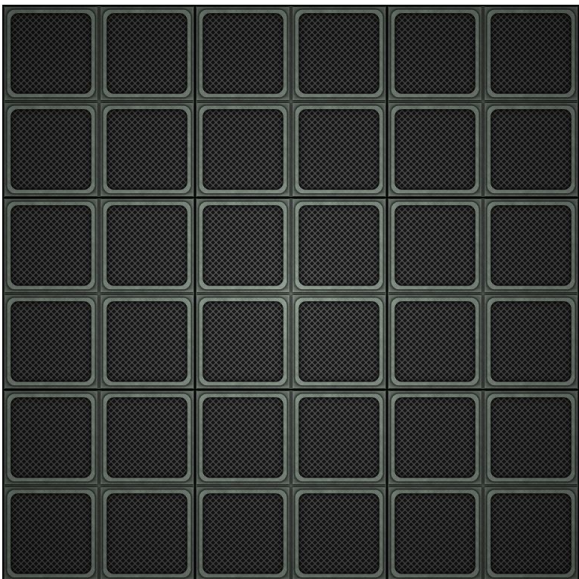
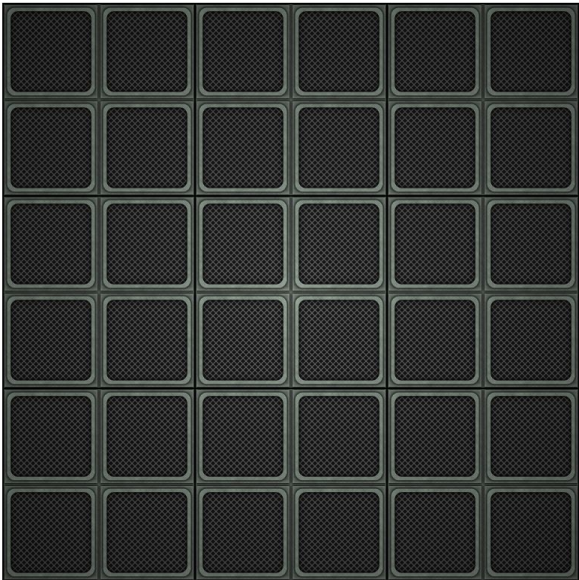
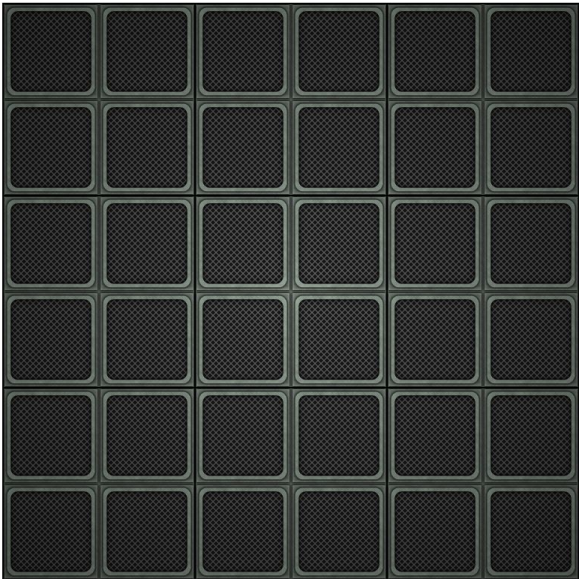
Use these connectors and floor tiles when you want to create 90 degree corner joints between two wall pieces. Glue the assembled connector to the white area on the floor tile.

©2003 Christopher Roe. All rights reserved. Permission granted to photocopy for personal use only.



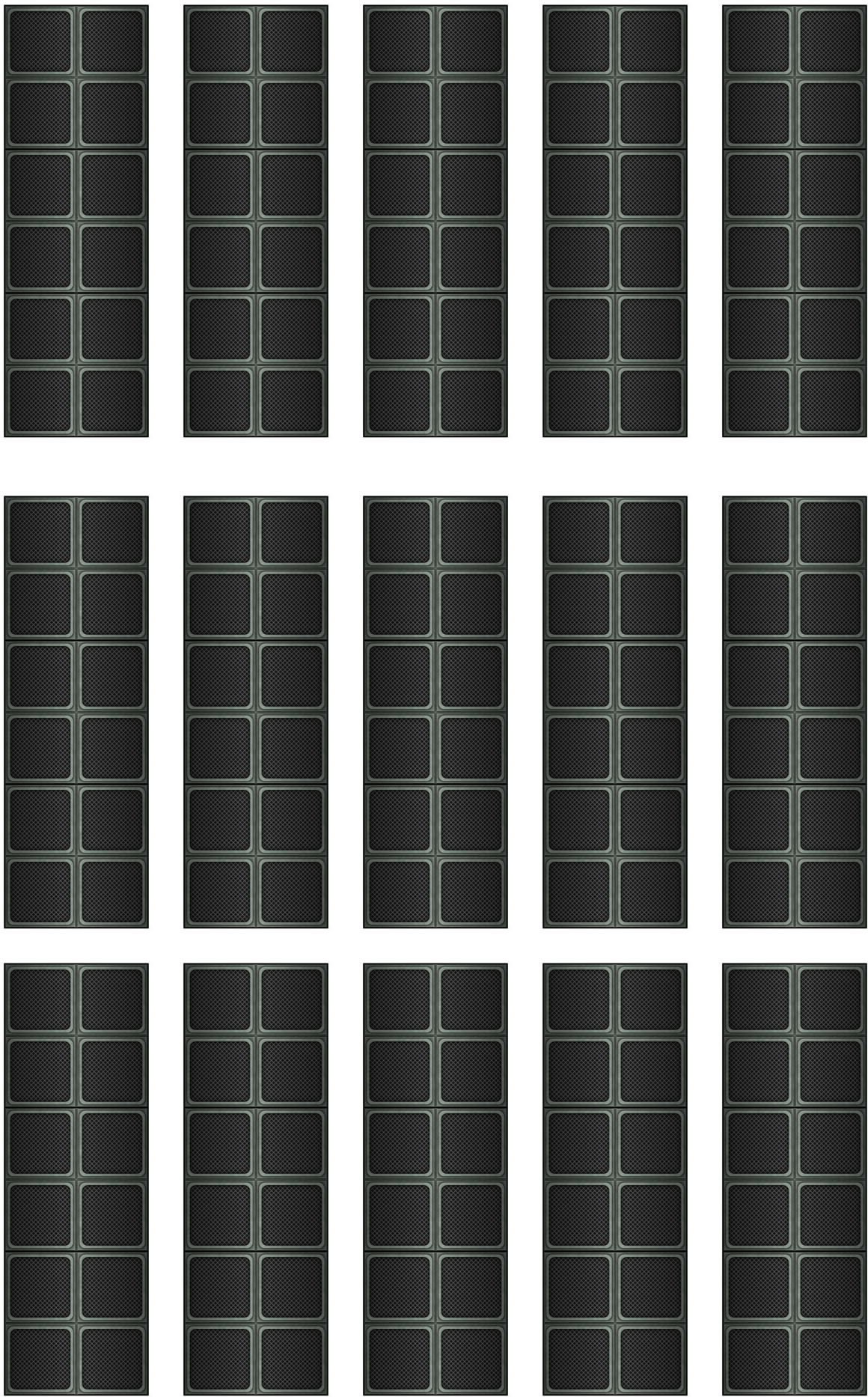
### T Connectors

Use these connectors and floor tiles when you want to create a T-joint between three wall pieces. Glue the assembled connector to the white area on the floor tile.



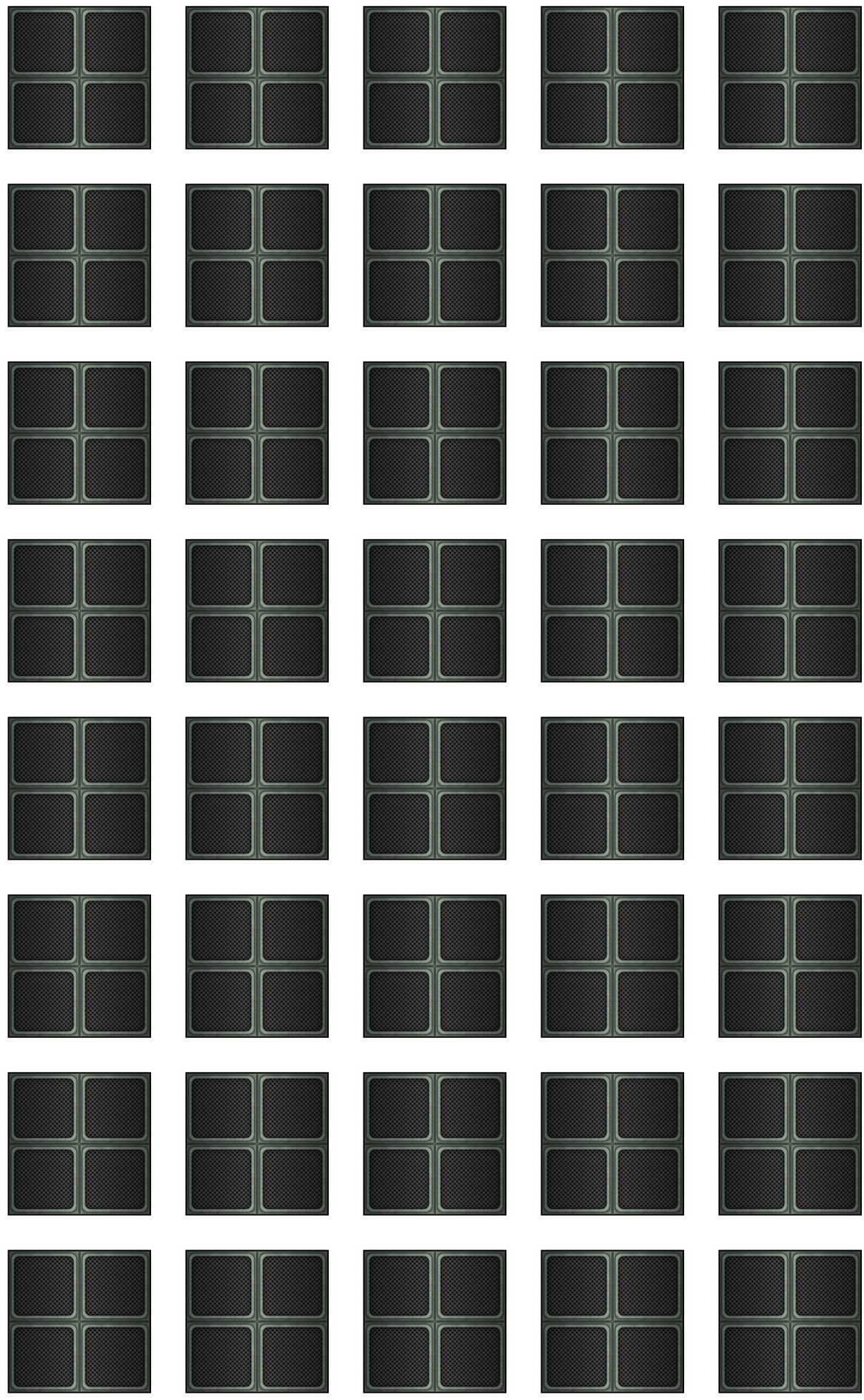
**Floor Tiles, 3x3 inch, Type 1**

Use these floor tiles for 3x3 rooms. Place X, T, or L connectors at the corners of these floor tiles and join them with wall sections.



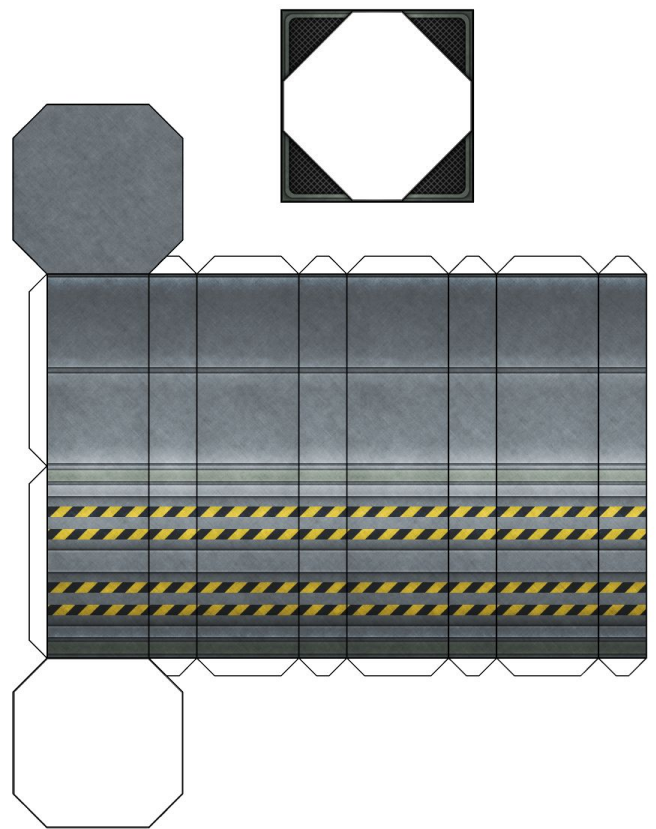
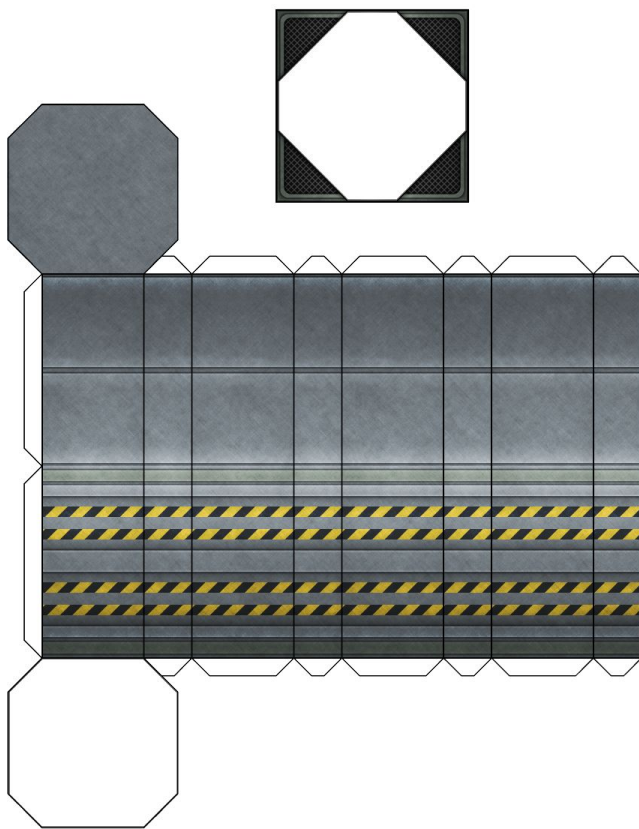
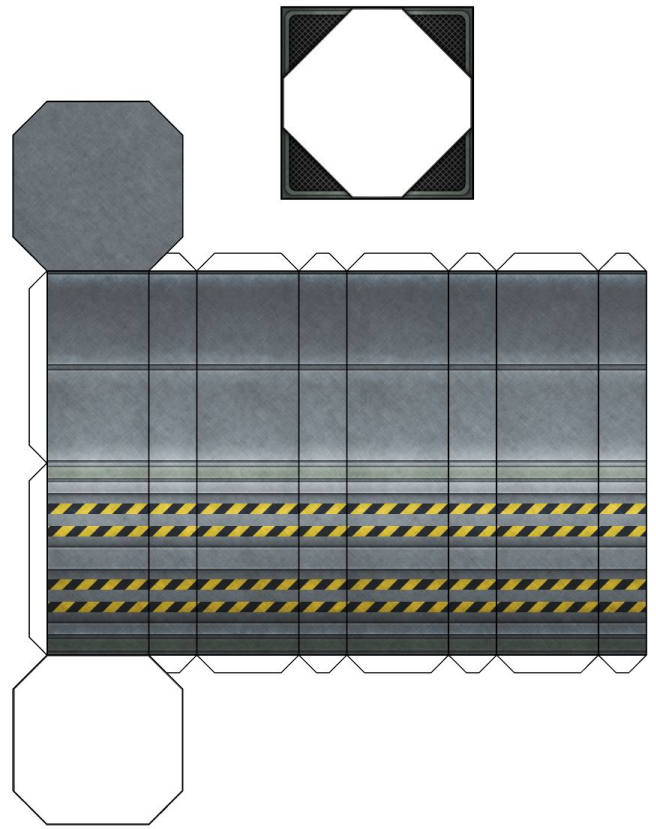
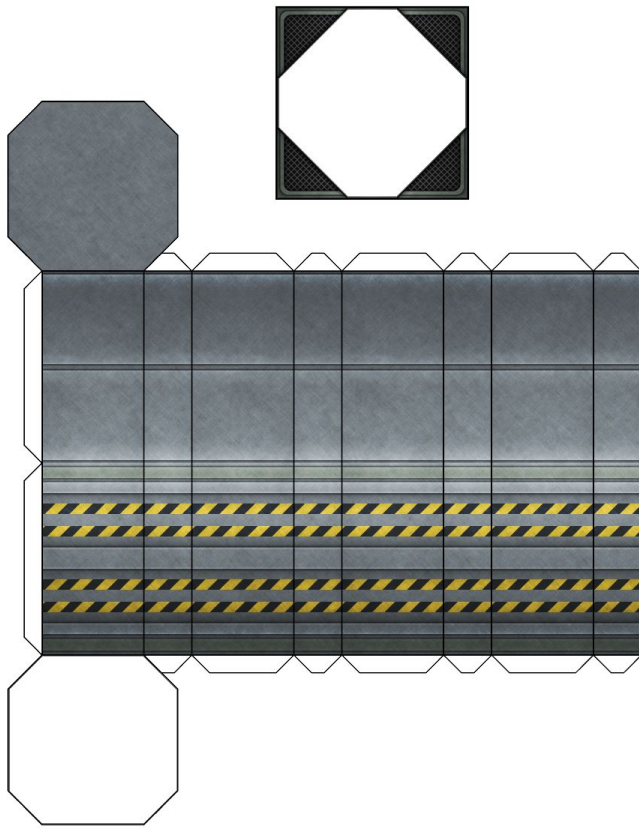
**Floor Tiles, 3x1 inch, Type 1**

Use these floor tiles for corridors or in conjunction with column pieces in a standard room.



**Floor Tiles, 1x1 inch, Type 1**

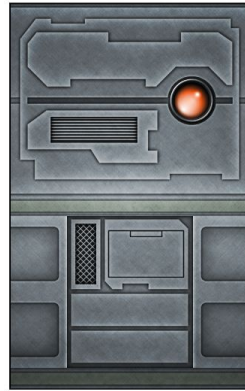
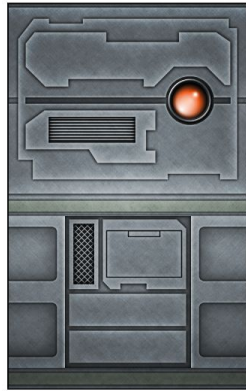
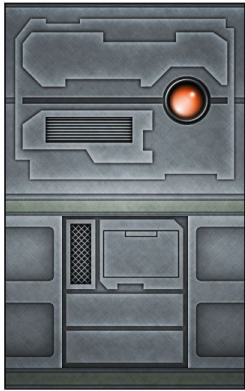
Use these floor tiles for corridors or in conjunction with column pieces in a standard room.



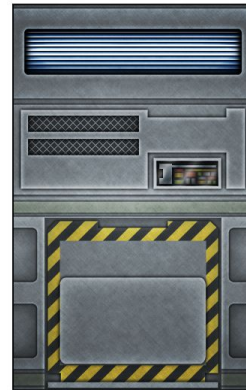
### Support Columns, 1x1 Inch

Use these columns to break up line of sight in large rooms or to liven up the environment. Glue the assembled column to the white area on the floor tile, and use empty 1x1 inch and 3x1 inch floor tiles to fill out the floor around the columns.

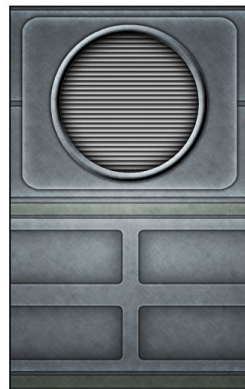
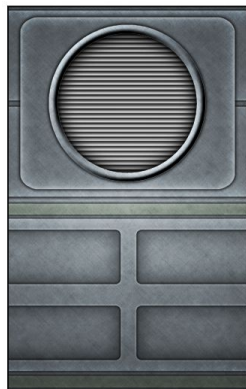
©2003 Christopher Roe. All rights reserved. Permission granted to photocopy for personal use only.



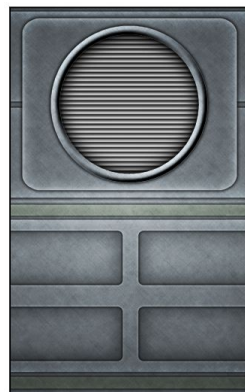
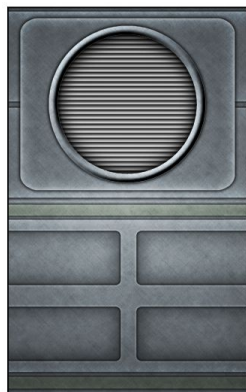
Homicidal Extended  
Logician 9000



Trash Chutes



Ventilation Ducts



### Layer Pieces for 3x1 Inch special walls

Use these layer pieces to give a specific function to the 1x3 special walls. Glue them to the bulge on the special wall piece.