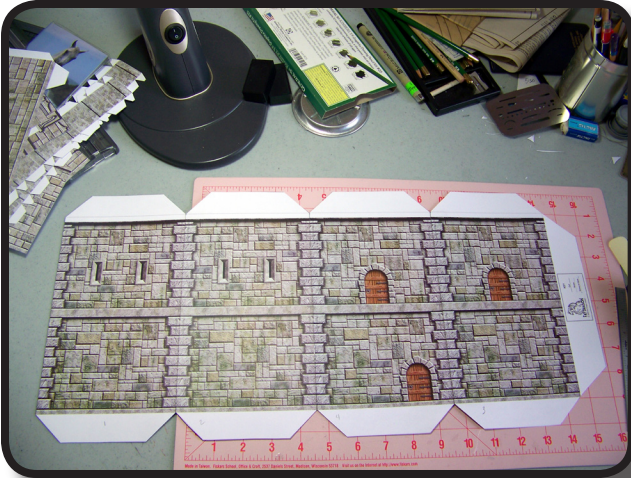
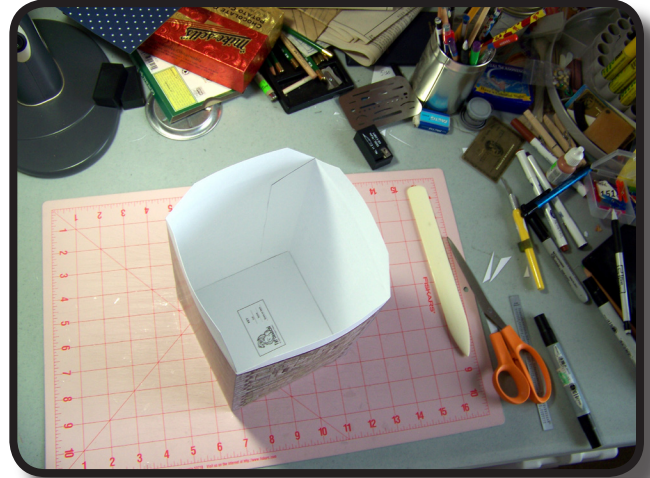


BORDERLAND KEEP

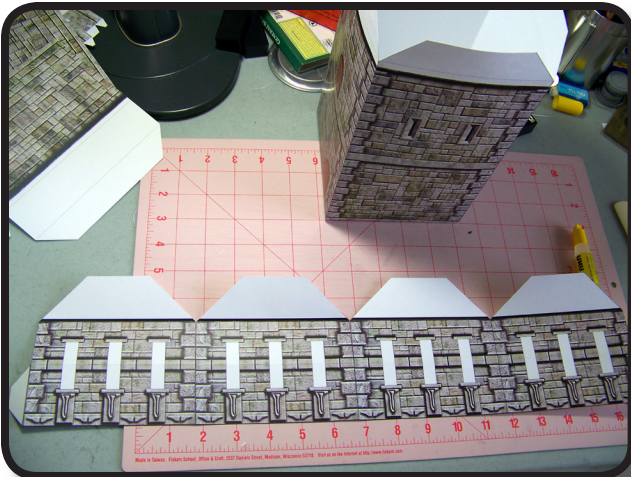
Tower Instructions



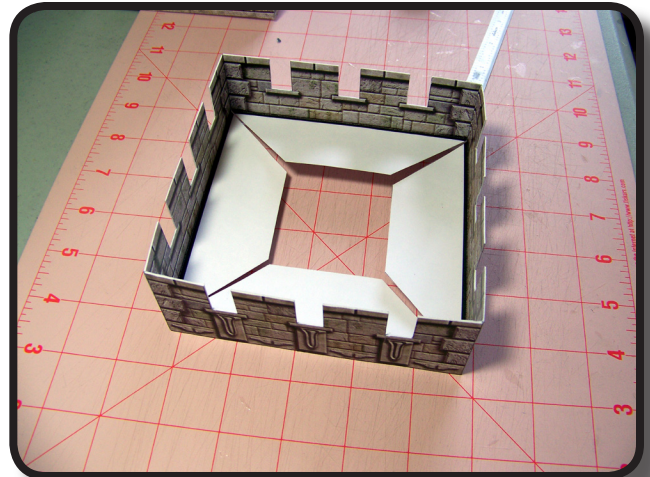
Step 1: Once you have cut and scored the tower wall pieces, glue the four sections together as shown. The arrangement shown above is for a corner tower. If you want the tower to be in the middle of a wall you will want to change the arrangement so that sections with an upper level door are on opposite (instead of adjacent) sides.



Step 2: Fold and glue into a square shape. Once the wall section has dried insert the floor piece through to top and push to the bottom as shown.



Step 3: Cut and score the crenelation top as shown. We recommend you cut the middle openings out before you proceed to step 4 as it will be very awkward to cut them then.



Step 4: Fold the top model into a square and allow to dry. Then fold the inner wall sections over the top and glue into place. Once everything is dry insert and glue the floor piece into place.