



FAT DRAGON GAMES

Copyright ©2010 Fat Dragon Games™
All rights reserved
www.fatdragongames.com

#1

Score/fold dotted lines

#2

Score/fold on reverse side

#3

Cut solid lines

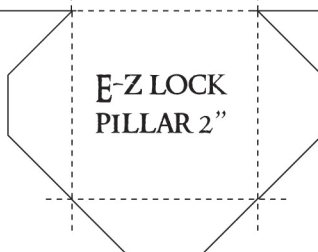
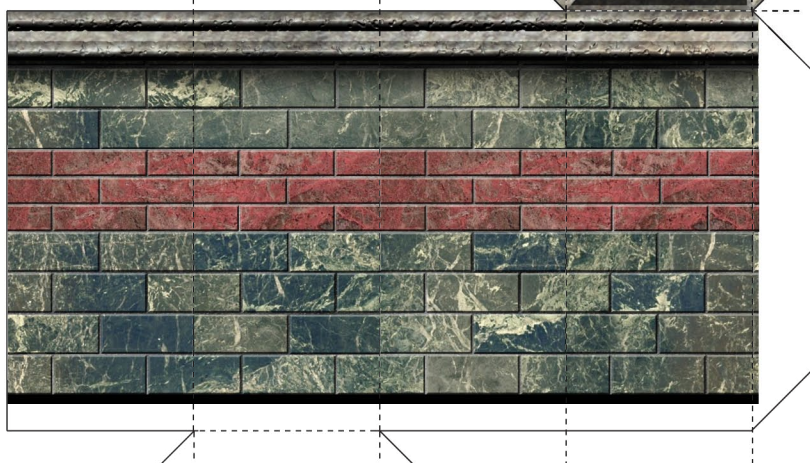
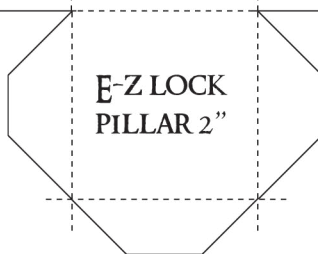
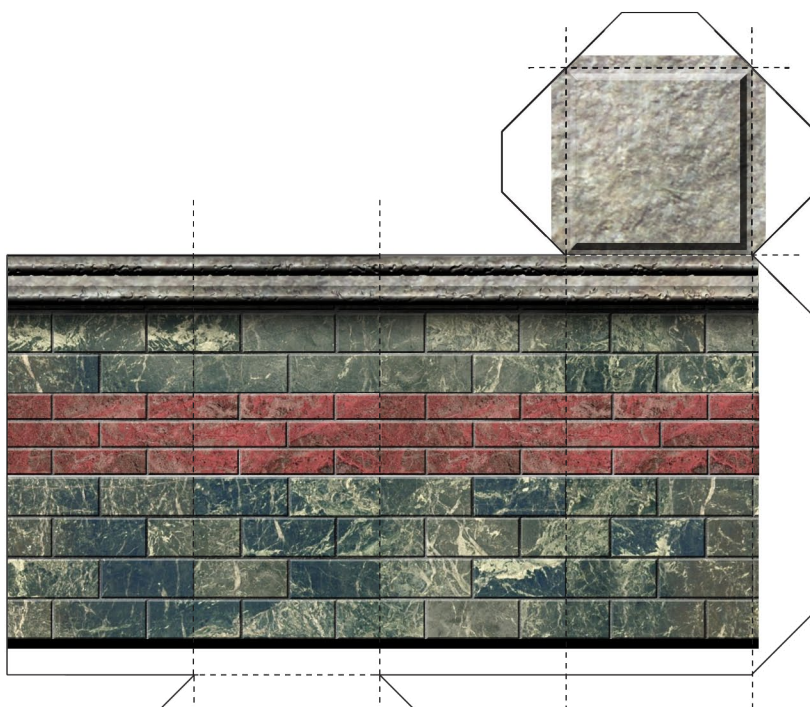
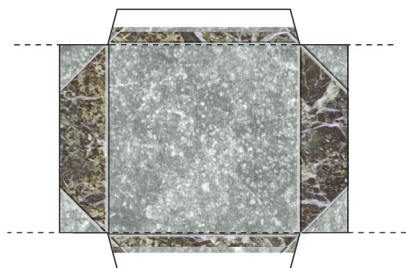
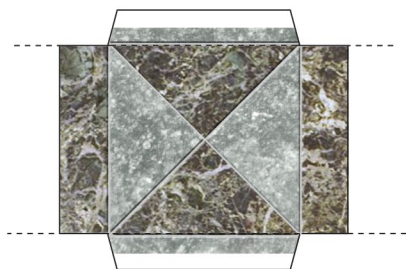
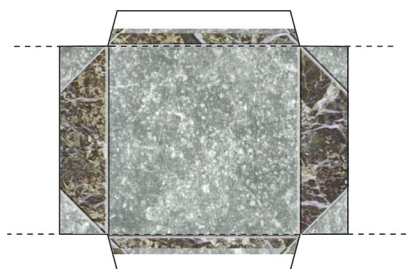
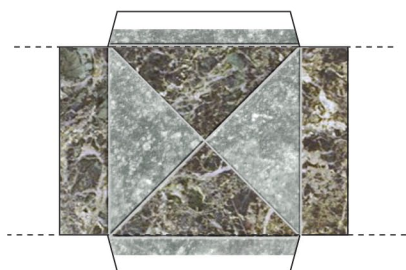
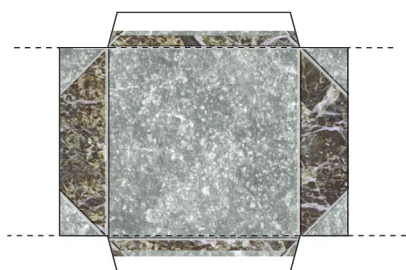
#4

Cut out

#5

Glue this area

PLEASE DO NOT SHARE FILES!
Piracy kills small "mom-n'-pop"
businesses like FDG!



Feed this end into cutter



FAT DRAGON GAMES

Copyright ©2010 Fat Dragon Games™
All rights reserved
www.fatdragongames.com

#1

Score/fold dotted lines

#2

Score/fold on reverse side

#3

Cut solid lines

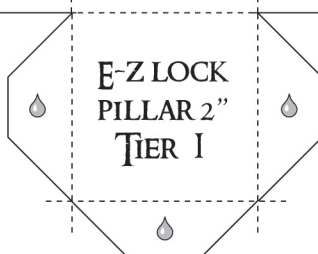
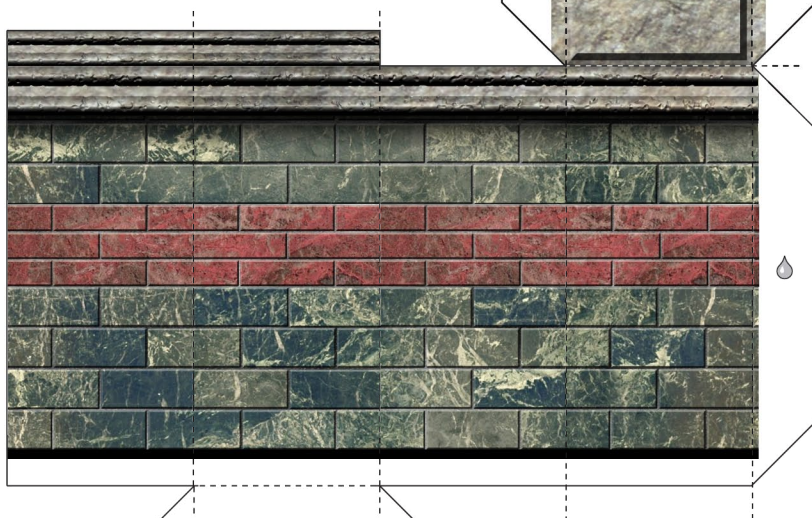
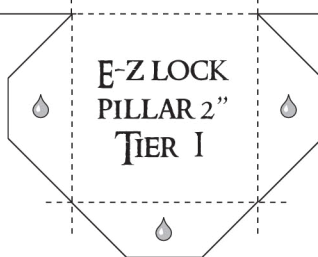
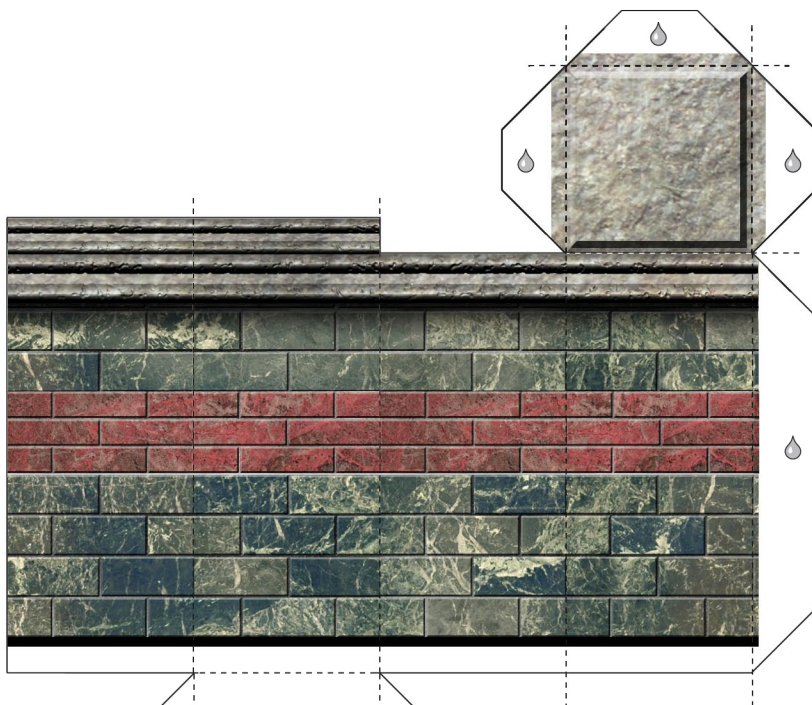
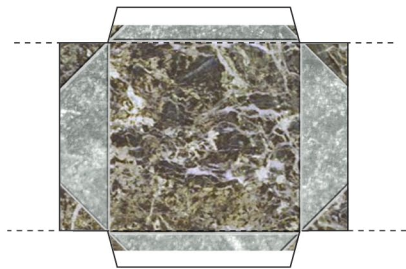
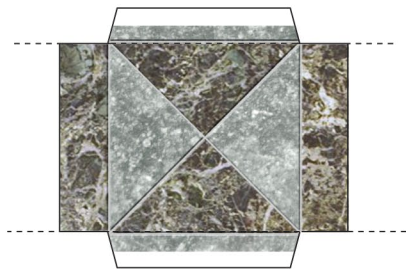
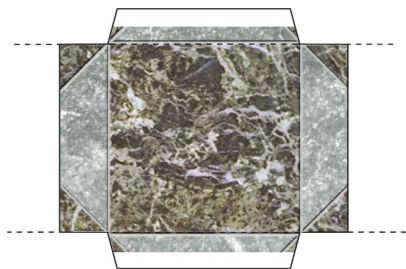
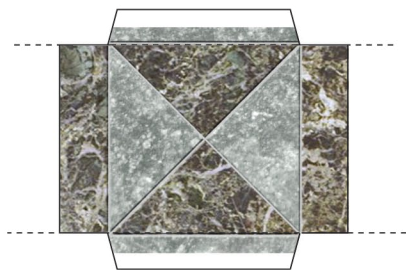
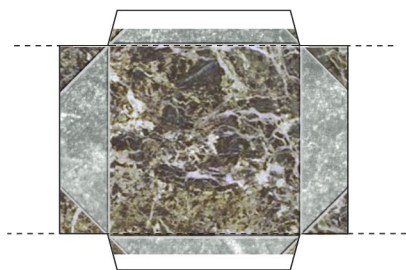
#4

Cut out

#5

Glue this area

PLEASE DO NOT SHARE FILES!
Piracy kills small "mom-n'-pop"
businesses like FDG!



Feed this end into cutter



FAT DRAGON GAMES

Copyright ©2010 Fat Dragon Games™
All rights reserved
www.fatdragongames.com

#1

Score/fold dotted lines

#2

Score/fold on reverse side

#3

Cut solid lines

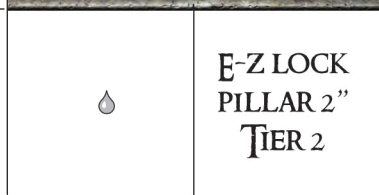
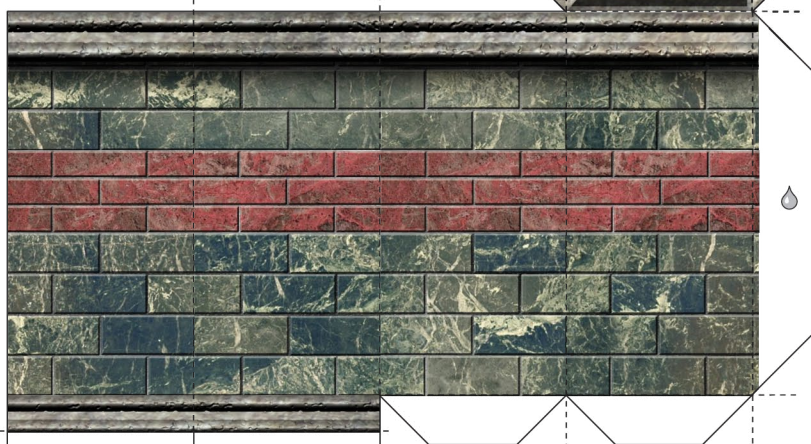
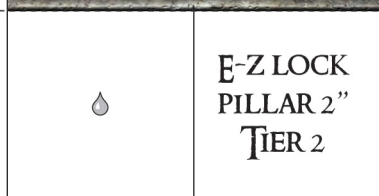
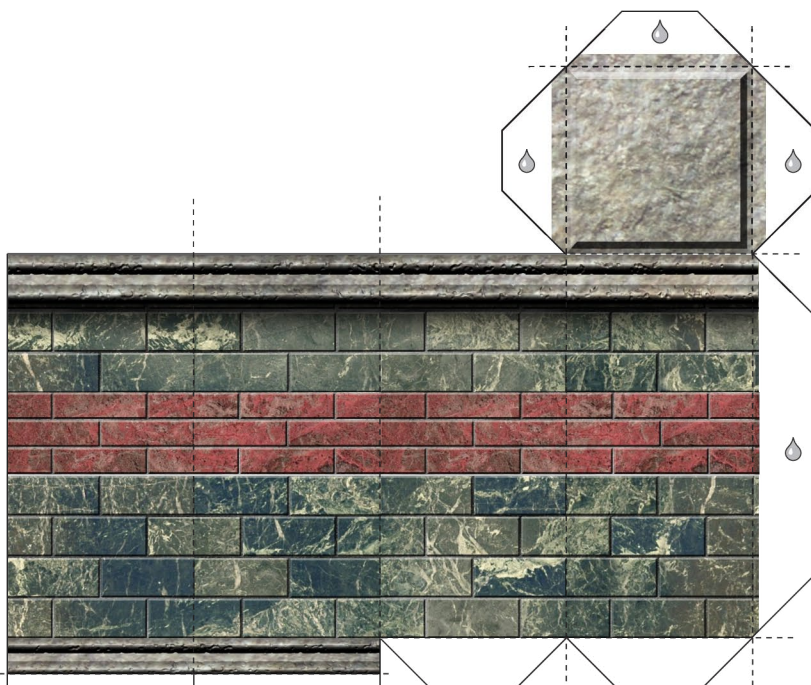
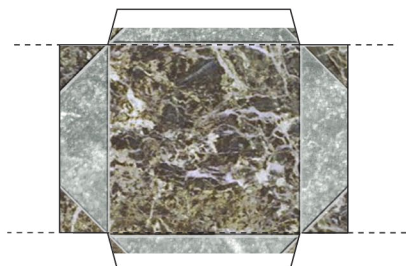
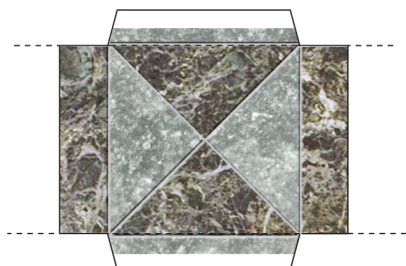
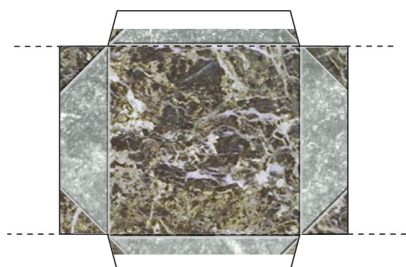
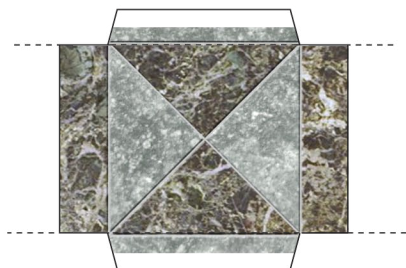
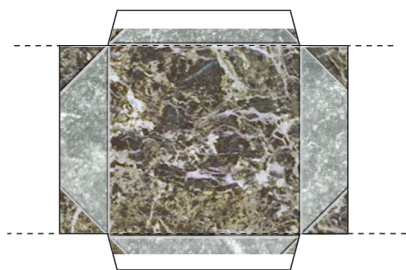
#4

Cut out

#5

Glue this area

PLEASE DO NOT SHARE FILES!
Piracy kills small "mom-n-pop"
businesses like FDG!



Feed this end into cutter



Score/fold dotted lines

Score/fold on reverse side

Cut solid lines

X
Cut out



Glue this area

The image displays a paper model template for a 1-inch column, designed for use with Dragon Layers. The template is oriented horizontally and consists of several interconnected parts:

- Main Column Body:** A long, narrow strip featuring a detailed, multi-colored pattern (red, green, and blue) representing the column's surface. It includes a central vertical seam and a small, square, textured inset near the bottom.
- Top and Bottom Flaps:** Two identical, elongated, pointed flaps at the top and bottom, each labeled "1 INCH COLUMN". These flaps are designed to be glued together to form the column's structure.
- Side Flaps:** Two identical, smaller, pointed flaps on the left and right sides, each labeled "1 INCH COLUMN". These flaps are designed to be glued together to form the column's base and top.
- Assembly Instructions:** Dashed lines indicate where to fold, and small water drop icons indicate where to apply glue.
- Dragon Layers Logo:** A small logo for "Dragon Layers" is visible in the center, featuring a dragon and the text "YOUR MODEL. YOUR WAY."

Feed this end into cutter



FAT DRAGON GAMES

Copyright ©2010 Fat Dragon Games™
All rights reserved
www.fatdragongames.com

#1

Score/fold dotted lines

#2

Score/fold on reverse side

#3

Cut solid lines

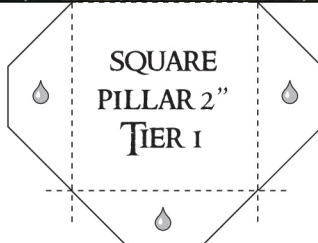
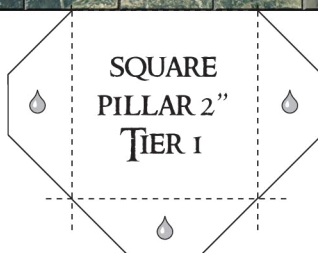
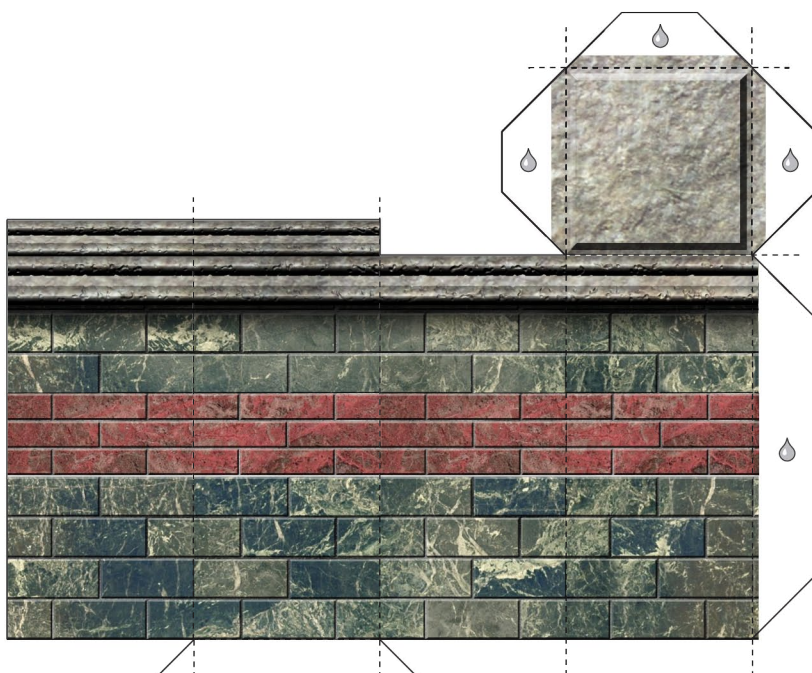
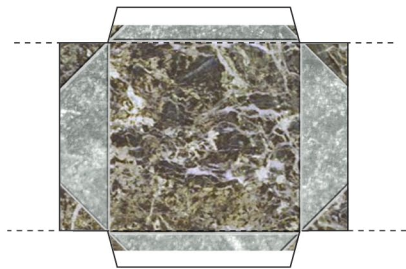
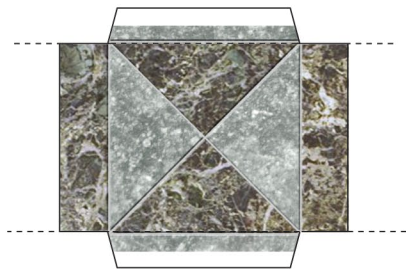
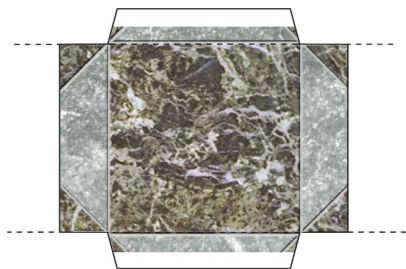
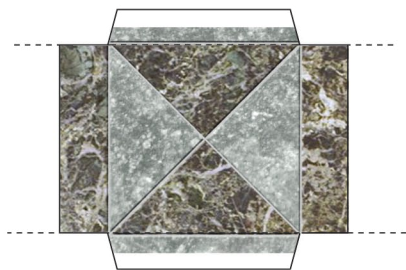
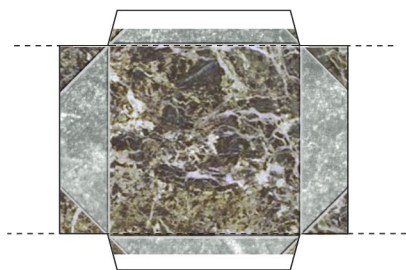
#4

Cut out

#5

Glue this area

PLEASE DO NOT SHARE FILES!
Piracy kills small "mom-n'-pop"
businesses like FDG!



Feed this end into cutter