

# CAPITAL CITY



F A T D R A G O N G A M E S  
[www.fatdragongames.com](http://www.fatdragongames.com)

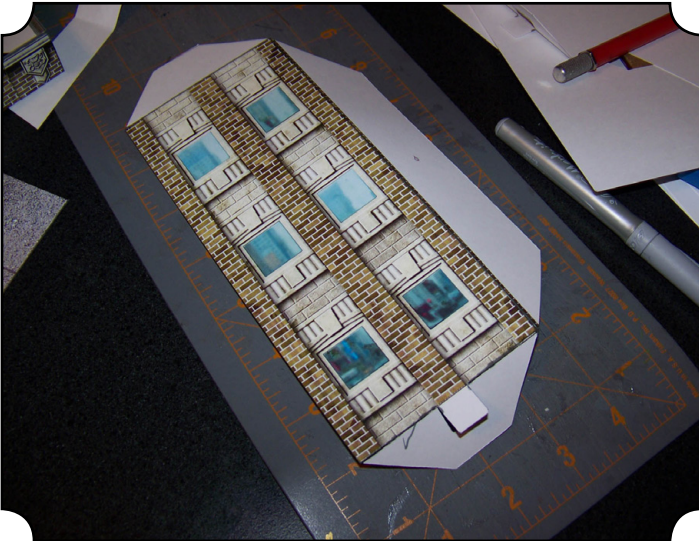




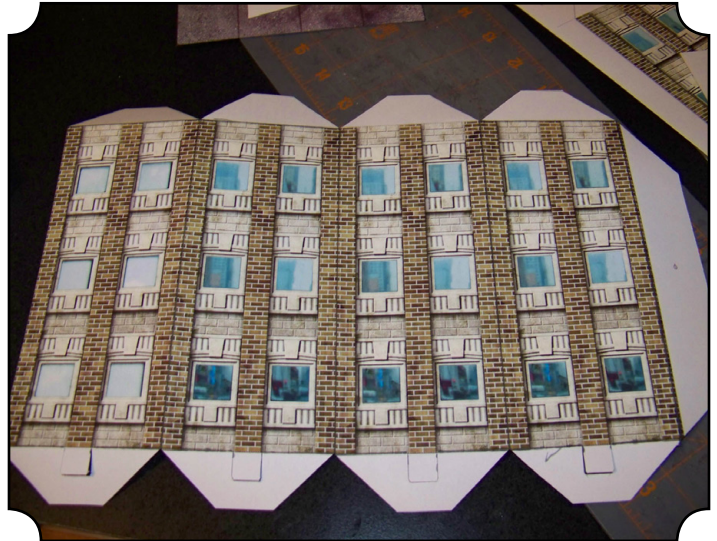
Note: Before proceeding with these instructions, please read the beginners guide PDF document included with this model which includes a complete list of necessary materials to construct this model. We recommend that you browse all the way through this set of instructions before beginning. Customers with CRAFTROBO and SILHOUETTE SD autocutters can download free GSD cut files for this set at the FDG website as they are made available.

**PLEASE NOTE THAT ALMOST ALL FILES HAVE OPTIONAL GRAPHIC LAYERS ACCESSED VIA THE ADOBE ACROBAT LAYERS PALETTE. SEE BEGINNERS GUIDE FOR ADDITIONAL INFO.**

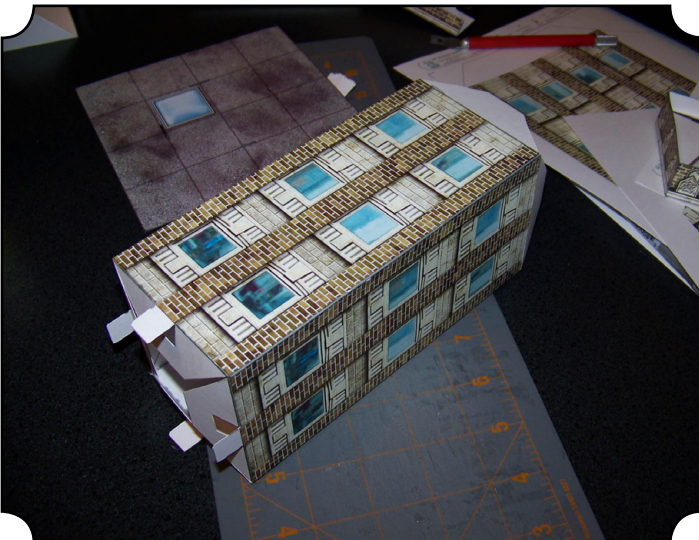
## ***BASIC BUILDING CONSTRUCTION***



1: Cut and test fold the wall pieces. For the upper tier sections, make sure you cut out the small center tab on the bottom flaps as shown above.



2: Glue each wall piece to the adjoining piece as shown.

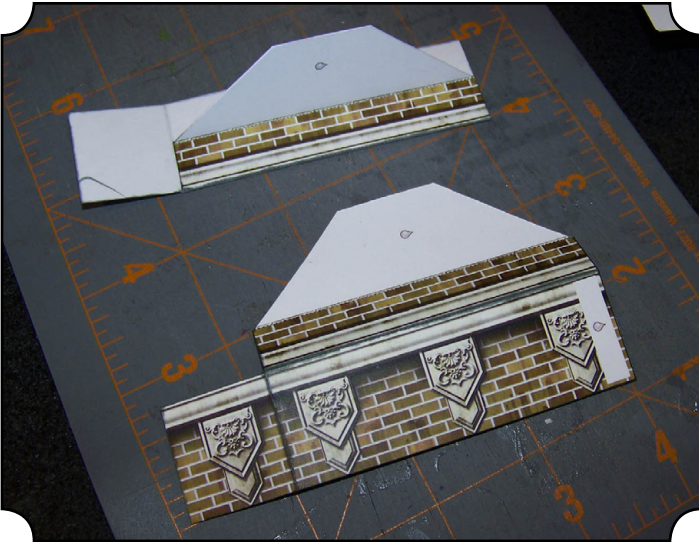


3: Fold and glue the final tab into place.

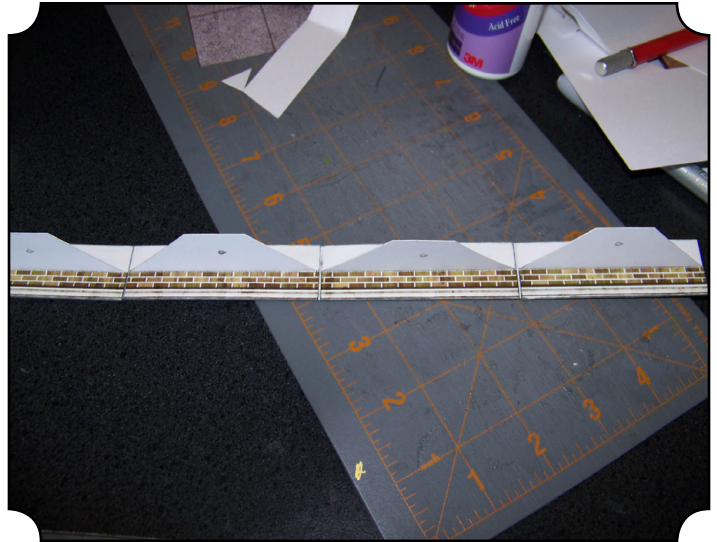


4: Cut and test fold the roof sides as shown.

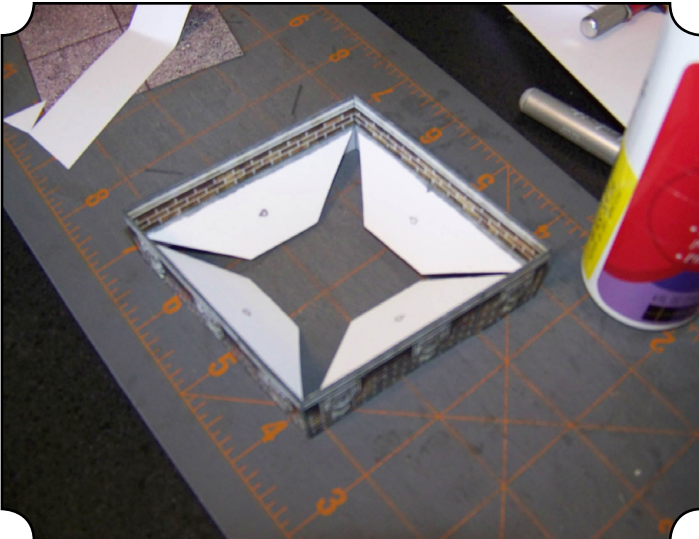




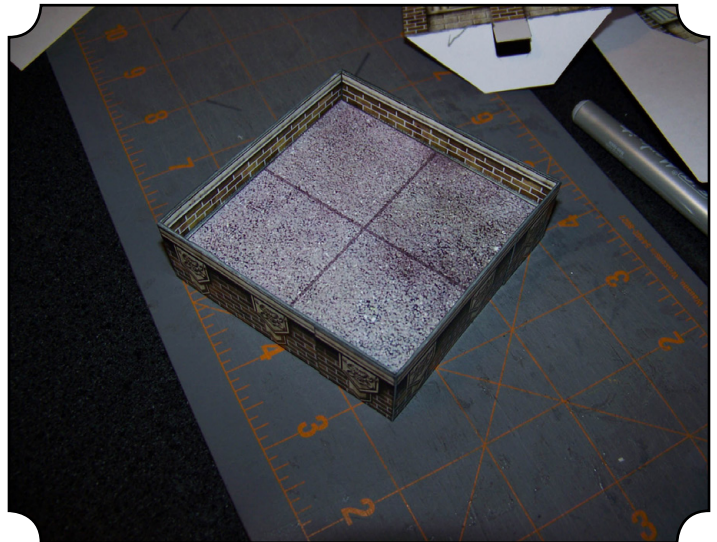
5: Cut and test fold the roof sides as shown.



6: Glue four sections into a strip.

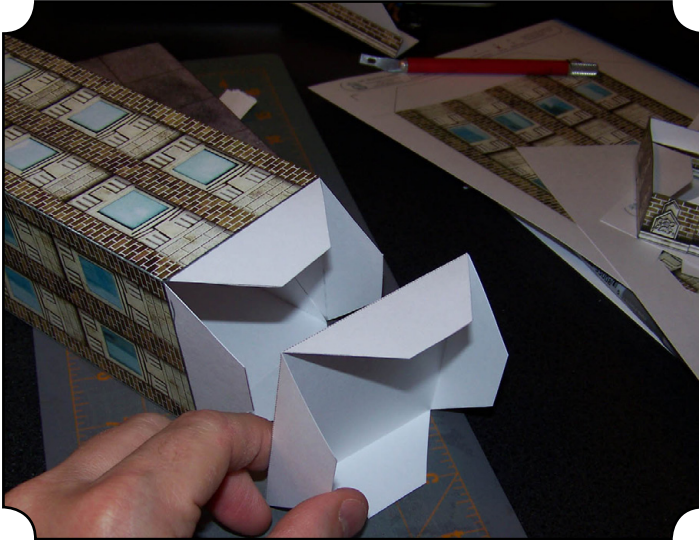


7: Fold the four edges and glue the final tab as shown. Begin folding the top rim down and gluing into place, keeping the inner/lower tab folded inward, away from the glue.

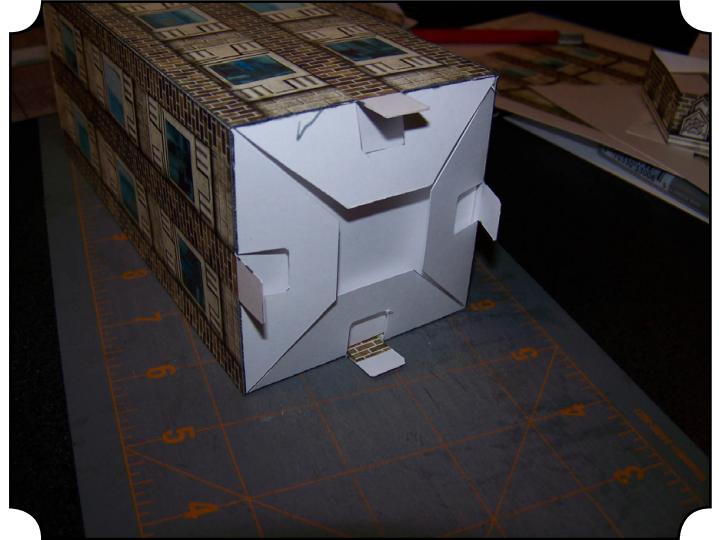


8: Glue the roof piece on top of the inner tabs.

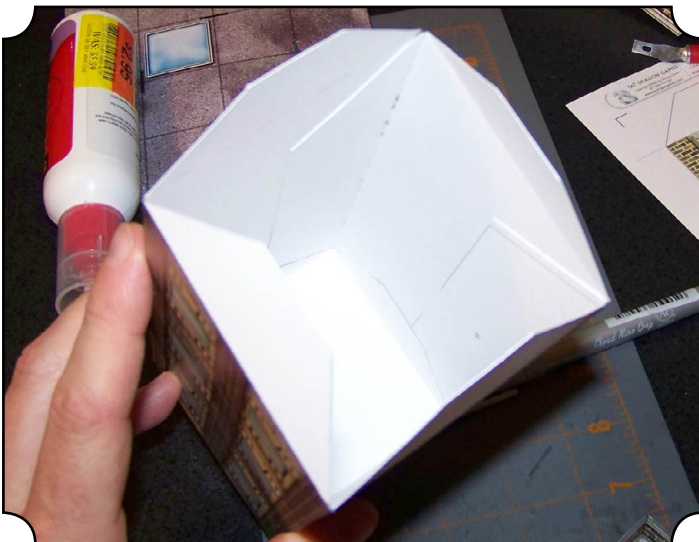




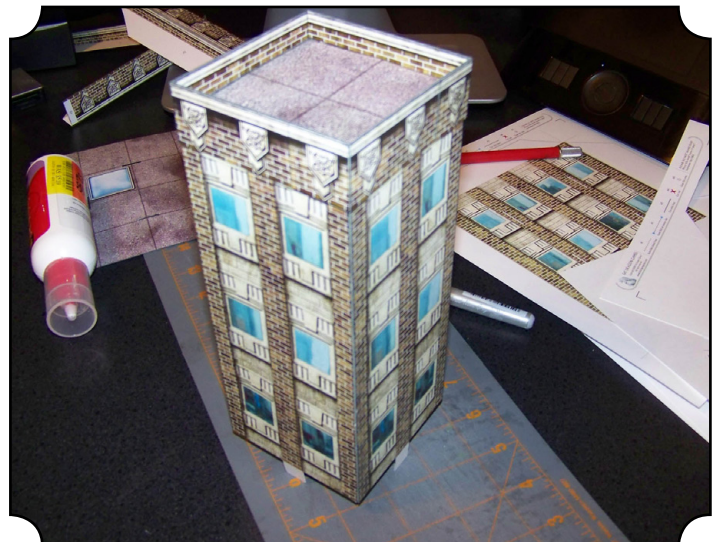
9: The internal brace simply inserts (without glue) through the top of the building and is pushed clear down to the bottom



10: This is the view through the bottom of what it should look like with the internal brace in place

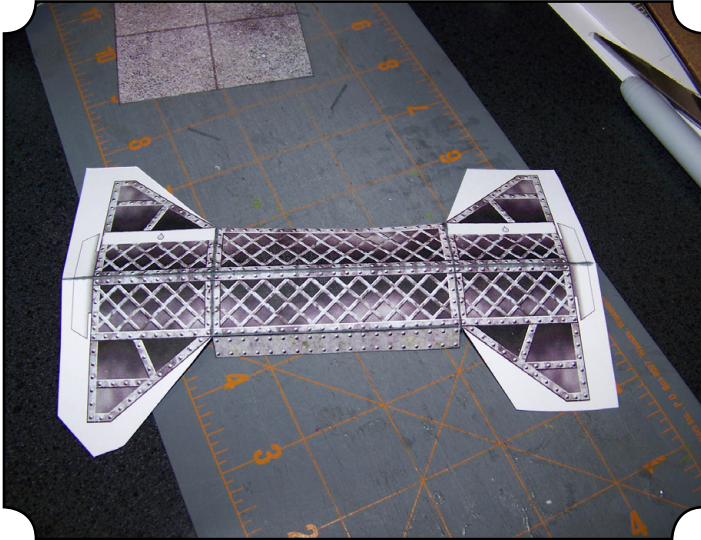


11: This is the view through the top of the building of what it should look like with the internal brace in place.

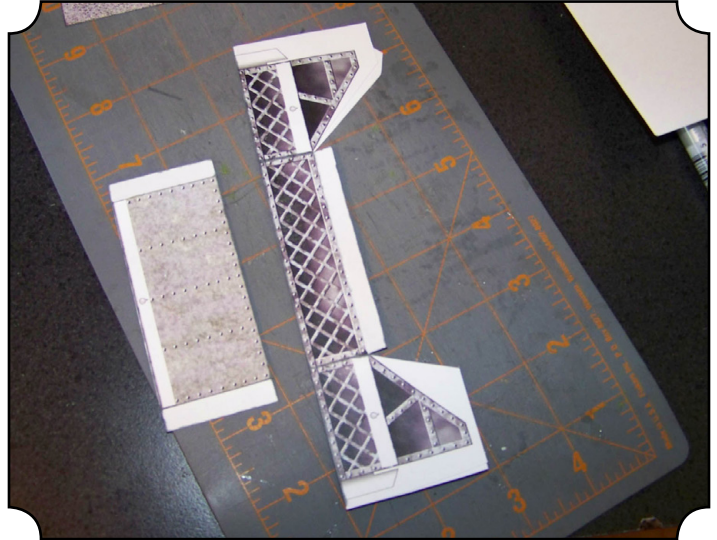


12: Insert the roof piece over the walls as shown. The larger building sections assemble in exactly the same way as the upper sections. Please not there are three different wall types for the upper section, multi-window, single window, and clock tower. Print 4 copies of whichever you choose.

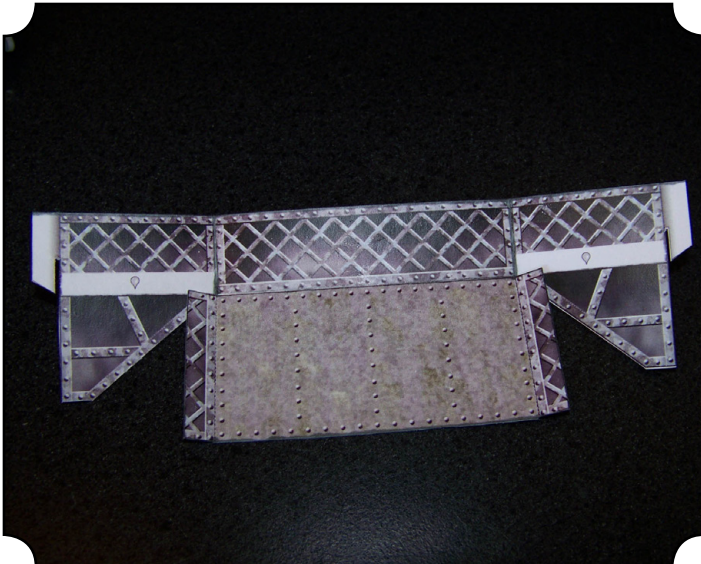




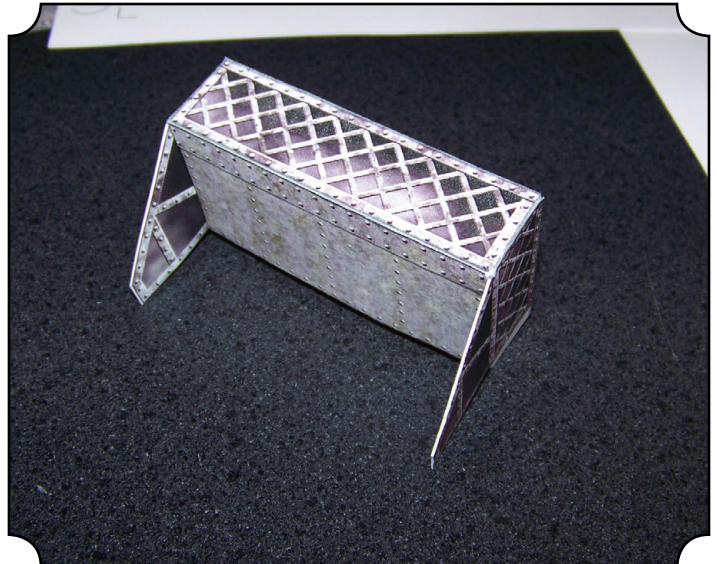
13: Cut out the balcony piece as shown. We recommend leaving the white areas around the outer ends, this will make for a better alignment of the folded sides when completed.



14: Fold both pieces in half and glue together. Allow to fully dry before proceeding.



15: Cut away the excess white areas, and then glue the floor piece as depicted above.

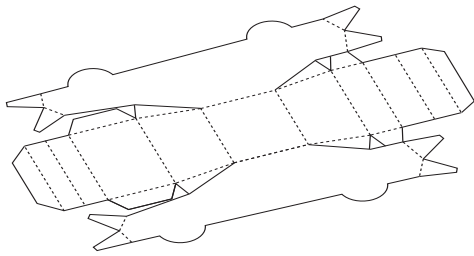


16: Finish by gluing the side tabs of the floor section to the sides and set aside to dry.

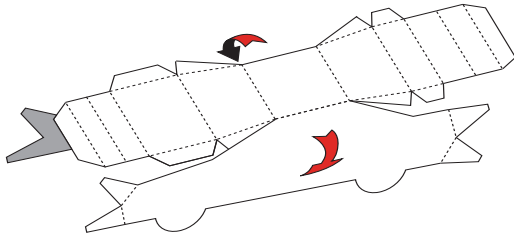


## JUNKER CAR

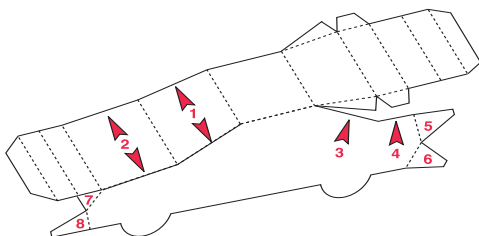
The car model looks more complex than it really is. Work slowly, gluing just one or two tabs at a time and your car will be finished just a few easy steps.



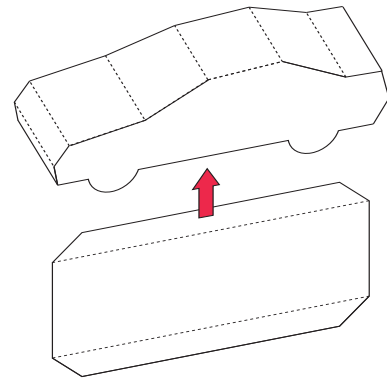
1: Cut and score the model.



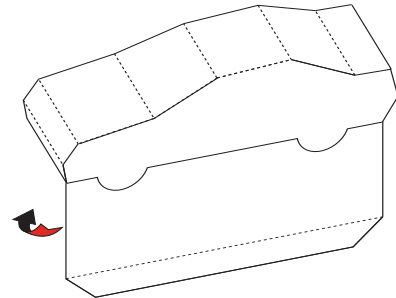
2: Fold the main side sections down.



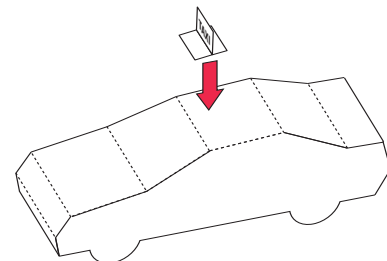
3: Begin gluing the tabs in the order shown above. Work two tabs at a time (i.e. left and right sides.)



4: Glue one side of the bottom piece to the main model.

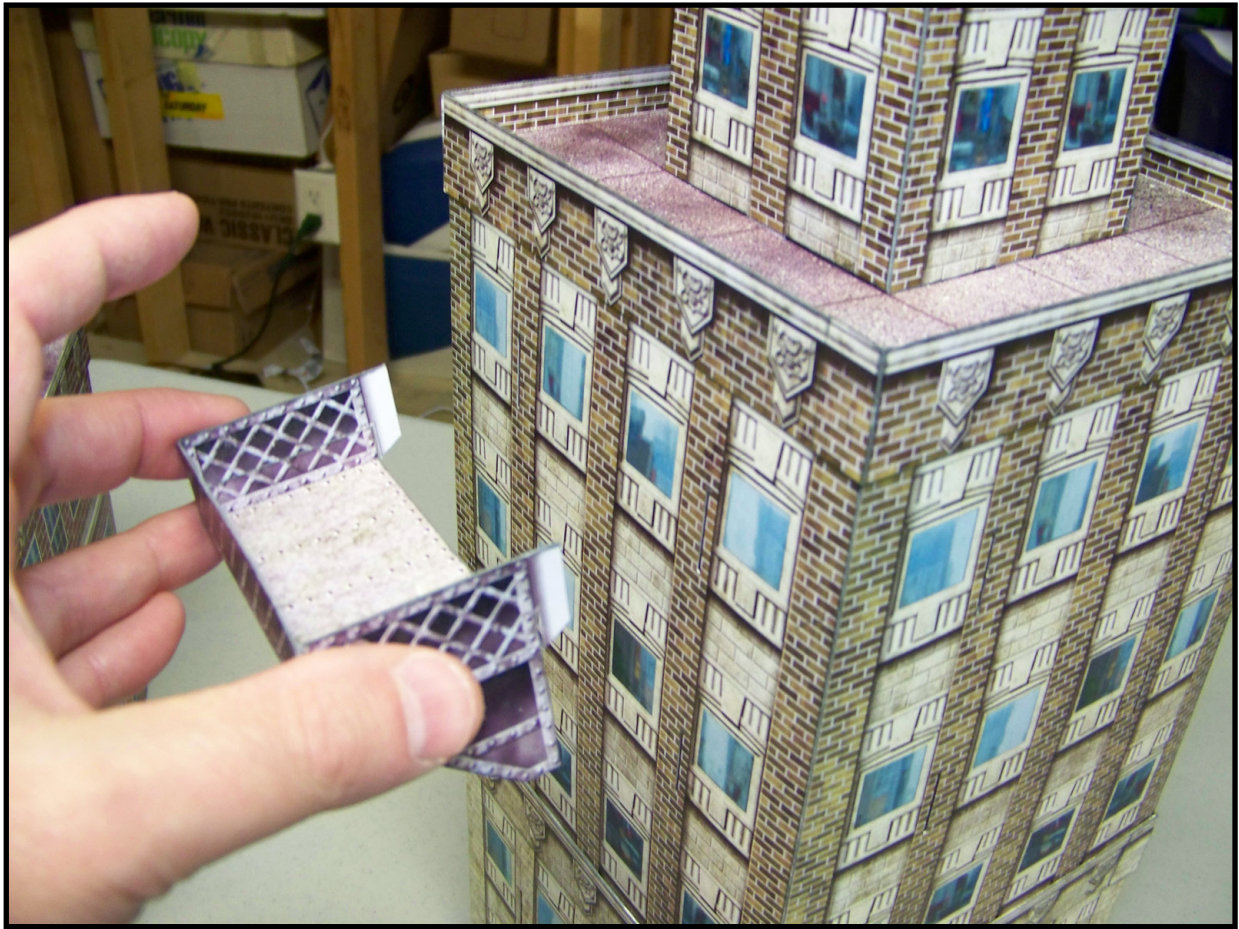


5: When the first flap is dry, fold the bottom piece upward and glue the remaining tabs.



6: Glue the 'TAXI' sign to the roof of the car.





Balconies attach via the slots cut into the side walls as depicted above.



All images ©2012 Fat Dragon Games.  
Capital City is a trademark of Fat Dragon Games. All rights reserved.