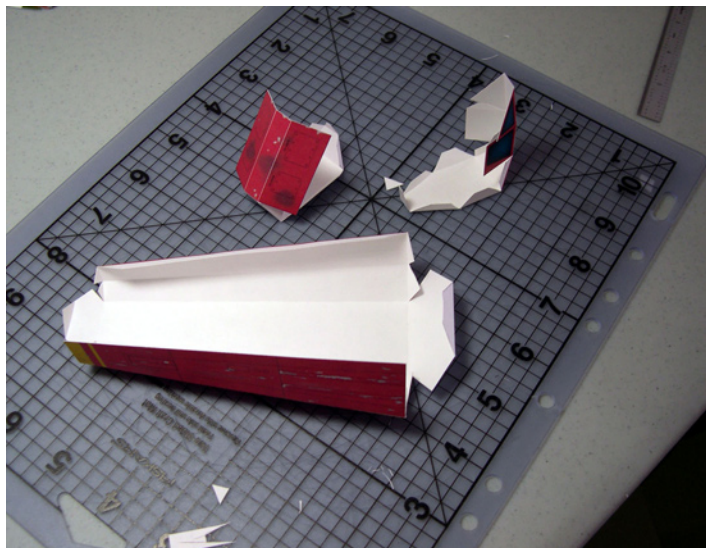
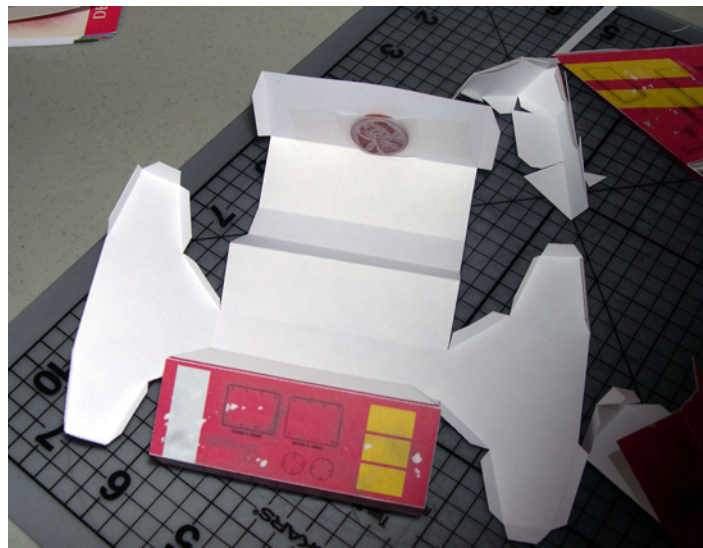


While white school glue (Elmers) will work on these models, this type of glue contains too much water to make really nice looking models (it warps the paper). There are good lo-tac white glues made for scrapbooking and crafts that are available from fabric and craft stores and these do work well. We recommend a good quality glue stick or even better a liquid paper glue pen. We use UHU OFFICE PENS for our models-the applicator puts a small amount exactly where you want it and it has a non clog tip. You can get these from www.saunders-usa.com



Score all pieces before cutting the pieces from the backing sheet. Fold all pieces and test fit before glueing.



Tape or glue a penny to the inside bottom of the main fuselage piece to weight it down when assembled.

©2006 Fat Dragon Games
www.fatdragongames.com

Assemble each subassembly piece completely before attempting to do the main assembly.

The completed fighter. The missile launcher is for the Mk IV only. The Mk III has the rear seat section.

