

FAT DRAGON GAMES

www.fatdragongames.com



SHRINE OF CTHULHU

Deep in the countryside lies an ancient shrine to the great Cthulhu. Dark and horrific rites are practiced on its aged altar with the intent of summoning an unnamed horror into this world.

CALL of
HORROR ROLEPLAYING
CTHULHU

The names, descriptions, and depictions applied to this supplement are derived from works copyrighted by and include trademarks owned by Chaosium Inc., and may not be used or reused without its permission.



©2009 Fat Dragon Games. Kingdom of Cthulhu is a trademark of Fat Dragon Games. All rights reserved.

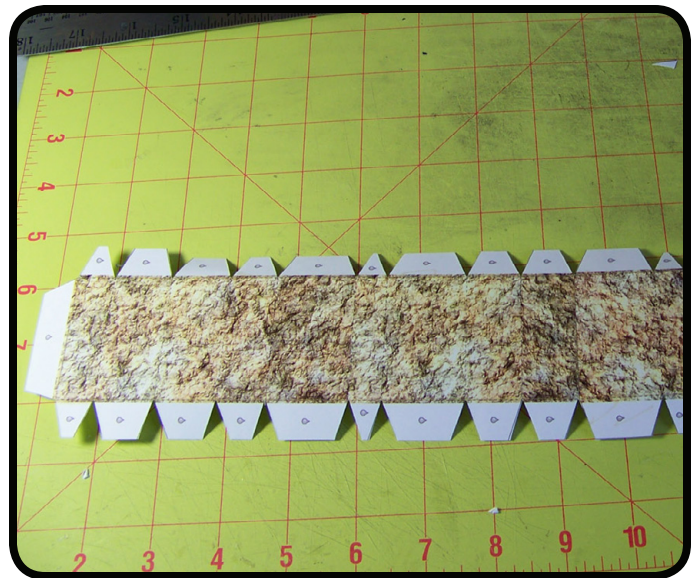


STOP! Before beginning construction of this model set make sure you have read the document *'Intro To Card Modeling.pdf'* included with this product.

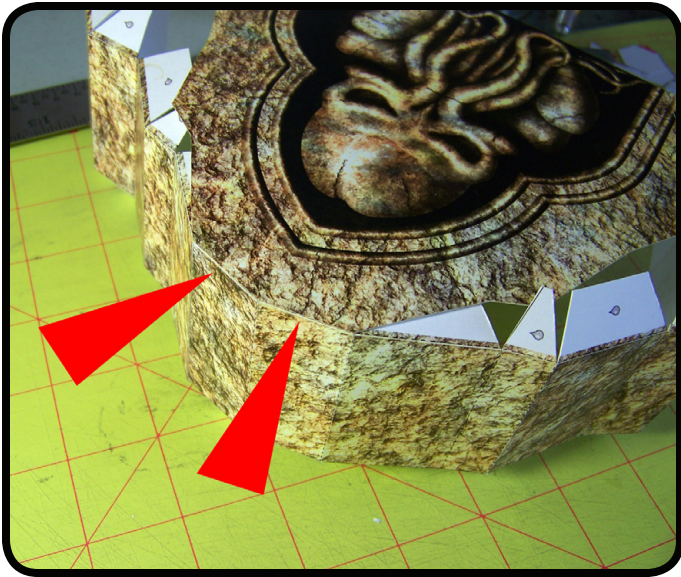
STATUE



Step 1: After cutting and scoring the pieces for the main statue, glue the two side strips together as shown. The proper tab to glue is marked as such on your model.



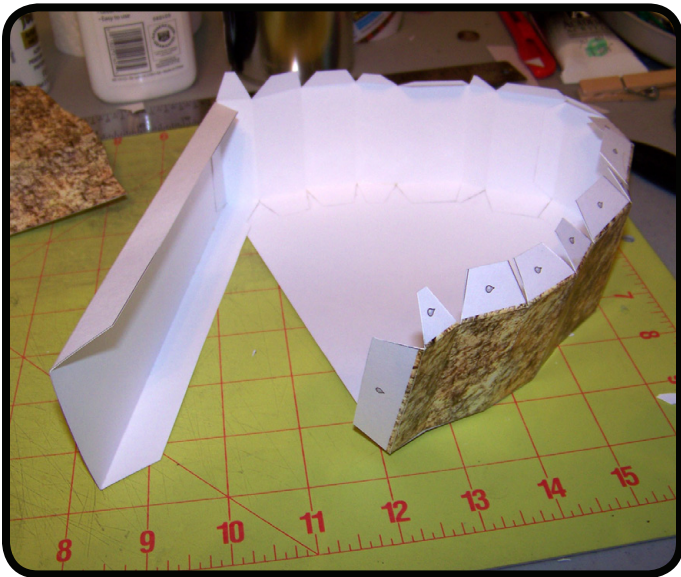
Step 2: Allow to fully dry and then test fold along all of the score lines.



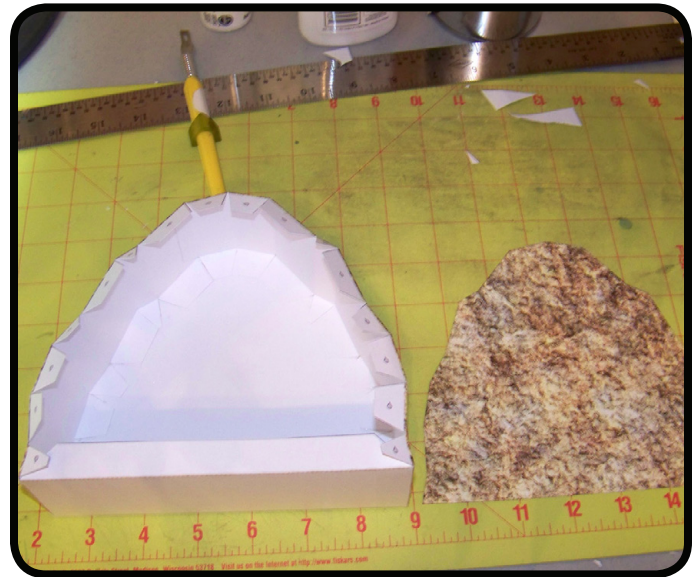
Step 3: Begin gluing the side strip to the front face piece. Start with the top two tabs and allow to fully dry.



Step 4: Proceed to glue the remaining tabs a couple at a time until the front piece has been fully glued to the side strip.

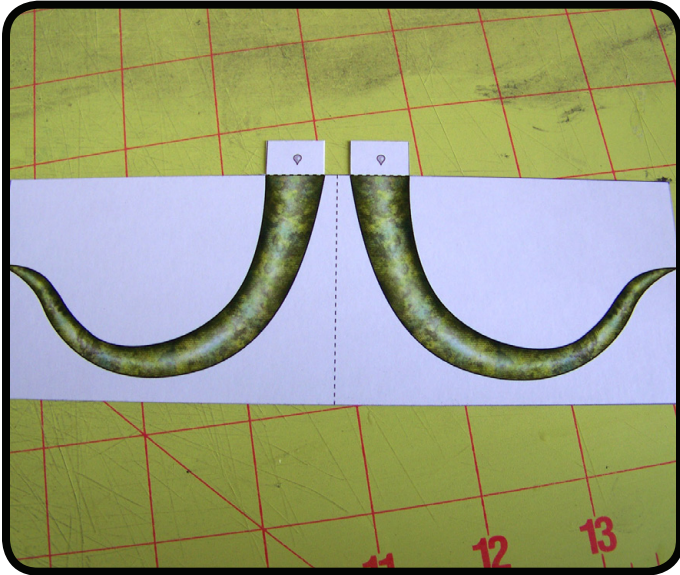


Step 5: Next glue the bottom piece to the structure as shown.



Step 6: Allow the bottom to fully dry, and then glue the back piece into place.

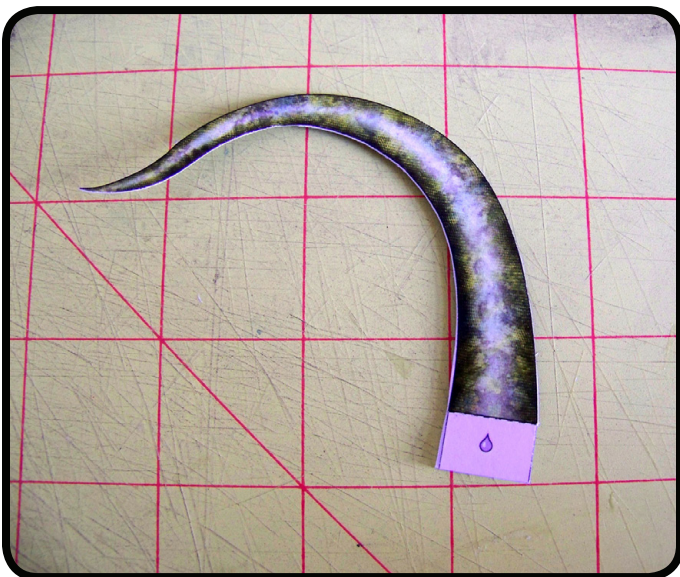
TENTACLE



Step 1: Cut and score the piece as shown.



Step 2: Glue in half as shown above, making sure not to glue the two outward folding tabs together.



Step 3: Carefully trim around the tentacle, edging it with a green or black marker.

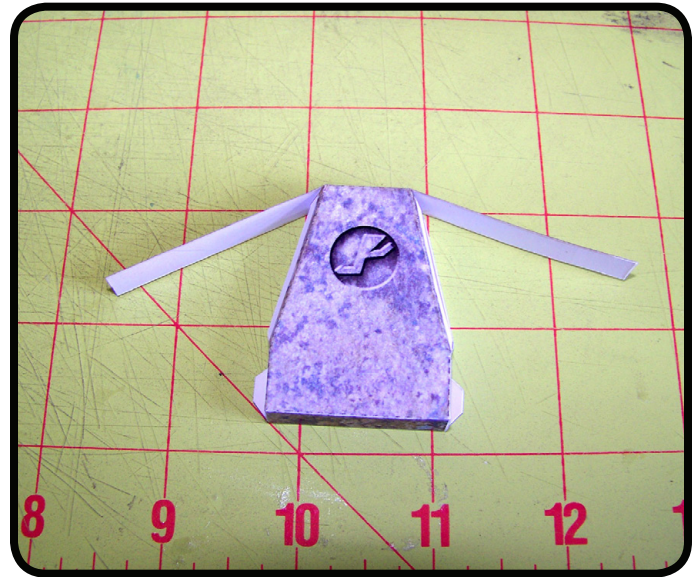


Step 4: Insert through the bottom of the base as shown. This can be dropped on top of the fixed altar during play.

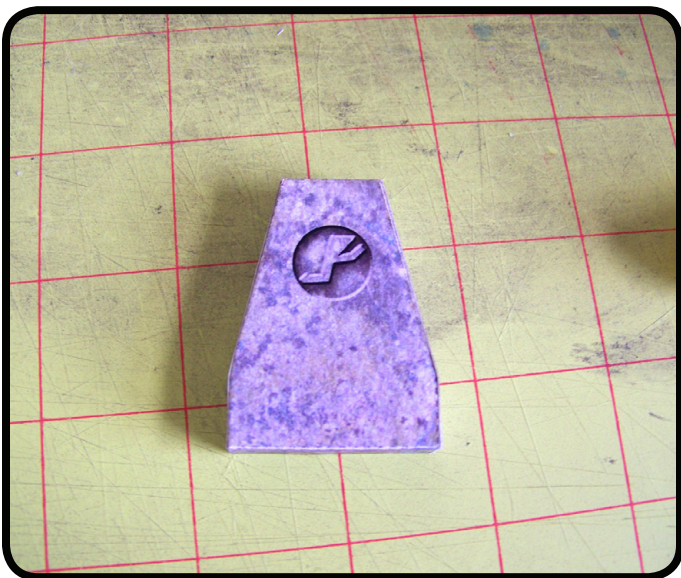
ALTAR STONES & FIGURES



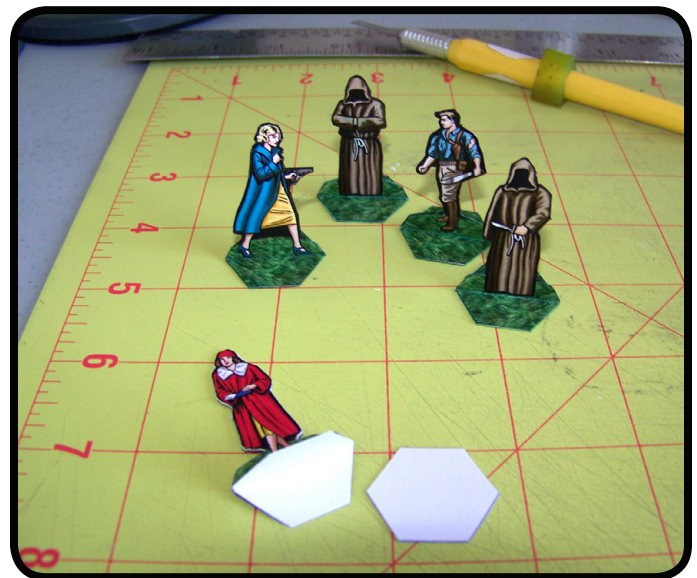
Step 1: Cut and score the stone marker piece as shown.



Step 2: Glue the bottom tab first and allow to dry.



Step 3: Glue the side flaps into place.



Figures: The paper miniatures assemble just like the tentacle. Fold in half and glue, being careful not to glue the bottom outward folding flaps. Glue the separate hexagon base to the bottom for added weight and stability.