

ARSENAL: MULTI-GUN



WITH MODULAR BRIDGE!

Cardstock terrain for 28mm science fiction skirmish wargaming.

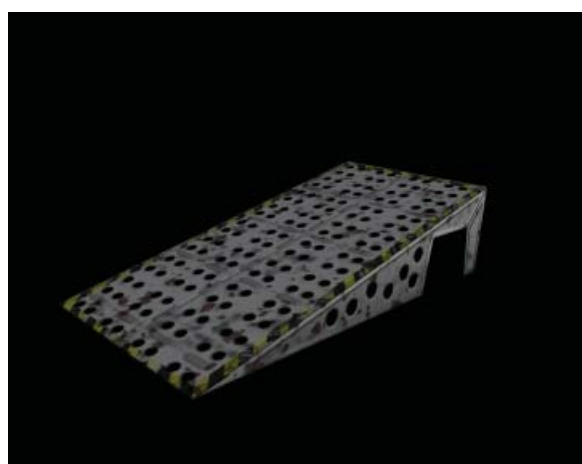
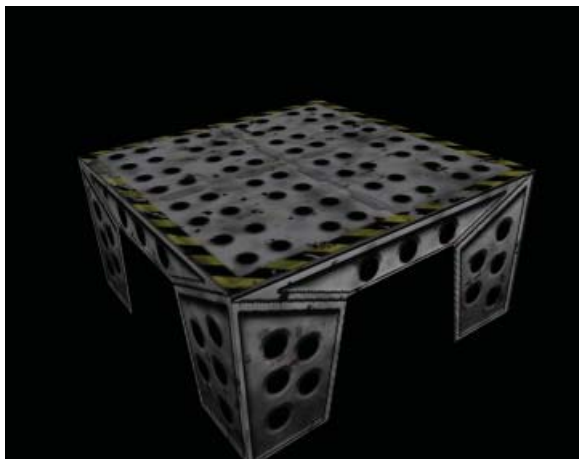
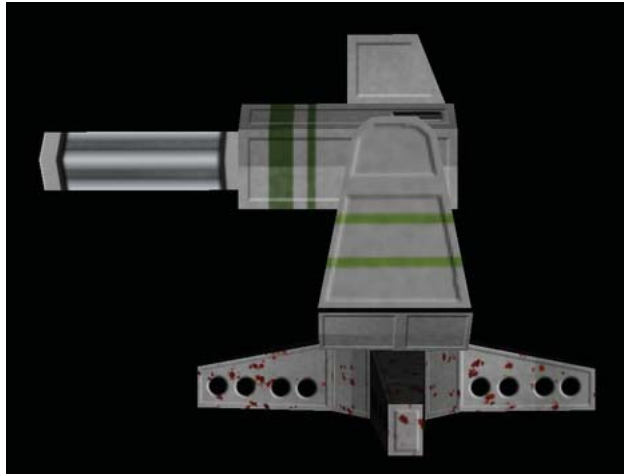
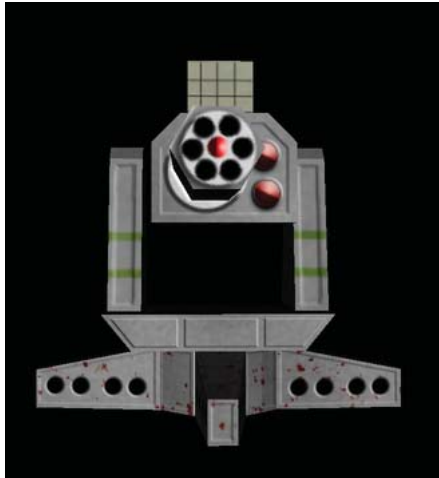


Finger and Toe Models
Copyright 2009

visit us at www.fingerandtoe.com

ARSENAL: MULTI-GUN

2



IT'S LIKE A FIRE HOSE . . . EXCEPT FOR
THE DEPLETED URANIUM.



What You'll Need

Materials:

- Card stock: 110lb is best.
- Glue (white glue, glue stick, and rubber cement or spray adhesive). Just about every hobbyist has a glue preference bordering on religious zealotry. Mine is white glue for everything except laminating large surfaces, which calls for a dry glue stick. I do use glue sticks when I'm in a hurry. "You puts your money down, and you takes your chances."
- Liquid refreshment.

Tools:

- Scissors.
- NOTE: most of the cuts can be made with scissors. Scissors are faster and somewhat safer than hobby knives, as old scars on my hands testify. Most professionals prescribe hobby knives, but parents have to clean the blood and mend the accidental cuts. It's a personal choice.
- Hobby knife. Indispensable for precise cutting and some compound curves.
- Scriber for creasing fold lines. A dry fine point pen works quite well for this purpose.
- Straight edge (preferably a metal ruler). Flip it over so the cork pad is topside.
- Tweezers for folding small parts.
- Inexpensive paint brushes to apply the white glue and a margarine tub of water to clean your brushes. (The lid serves as a palette for the glue)
- Permanent marker for edges and corners. Black will generally suffice, but you should invest in a set of multiple colors.

THE ARSENAL SERIES

Arsenal is intended to be an inexpensive way to expand your table top gaming experience. The Arsenal series will feature models of tactical, operational, and strategic weapons systems. Usually, each set will have a weapon model on a single page and a second page of scenery. The models are designed so that many parts, such as bases, are interchangeable, as will be the scenic elements. Quadlaser, for example, introduced a set of barriers to make hexagonal-shaped firing positions, while the Air Defense set has a radar fire control model, munitions crates, and spike strips as its scenic elements. Later models will add to the barriers with a consistent look and feel so they can be put together to make large fortifications and emplacements.

GAME PLAY NOTES

The multi-gun is a rapid fire cannon system equivalent to six high velocity 75mm barrels firing armor piercing or high explosive rounds. It is a direct fire, point effect system (basically the same as any cannon). To simulate the high rate of fire, allow each barrel to fire every turn (six dice). At extreme rate of fire, allow each barrel to fire three times (that would be eighteen dice!); however, the gun depletes its ammo if any ONE of the dice is a one. Reload requires two full turns. Explosive rounds are the equivalent to infantry-carried grenade launcher rounds.

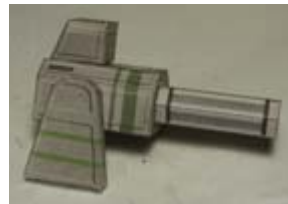
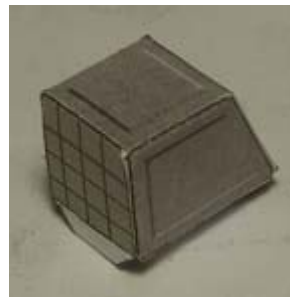
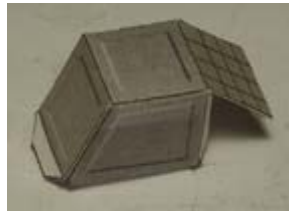
IT'S LIKE A FIRE HOSE . . . EXCEPT FOR
THE DEPLETED URANIUM.



ASSEMBLING THE MULTI-GUN SYSTEM

The multi-gun consists of three parts: barrel, body, targeter.

- Score, cut, and fold the parts as shown below.
- Glue the barrel's black-dot tab to the opposite edge.
- Fold the barrel end over and glue to the tabs.
- Glue the body black-dot tab to the opposite edge.
- Fold the ends of the body over and glue to the tabs.
- Glue the barrel to the hexagonal-shaped glue point.
- Glue the multi-gun target rear to its black-dot tabs.
- Glue the radar/sensor end (the one with the small squares) of the targeter to the flaps.
- Glue the targeter to the white glue point on the top of the multi-gun body.



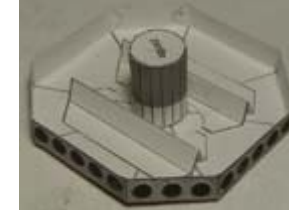
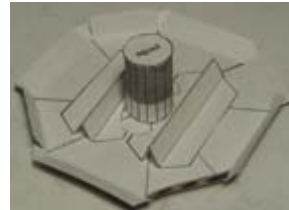
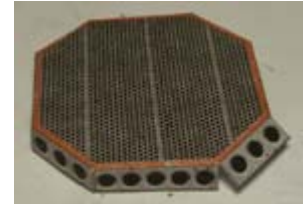
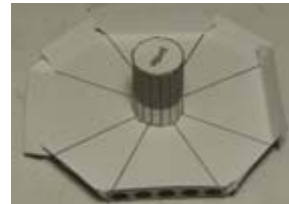
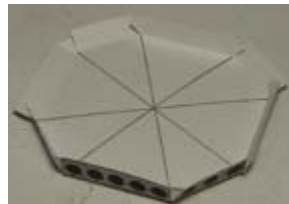
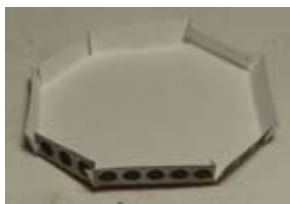
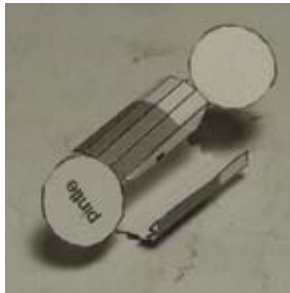
IT'S LIKE A FIRE HOSE . . . EXCEPT FOR
THE DEPLETED URANIUM.



ASSEMBLING THE GUN PLATFORM

The gun platform consists of four parts: the platform itself, the pintle, and the reinforcers.

- Curl the pintle so that it forms a cylinder with end caps.
- Glue the pintle black-dot tab to the opposite edge.
- Glue the pintle end caps to the tabs.
- Fold the sides of the firing platform down and glue to the tabs.
- Turn the firing platform over, mark the center, and glue the pintle to the underside of the firing platform, aligning it with your center mark.
- With a wet glue there is a tendency for the firing platform to warp. To prevent this, glue the reinforcers to the underside of the firing platform on either side of the pintle. They should be aligned in the same direction as the azimuth yoke's and the gun's main axis.
- NOTE: the cut out area allows you to fit the reinforcer close to the pintle. The platform will sit higher than if the reinforcers are not necessary.



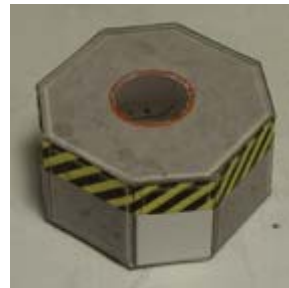
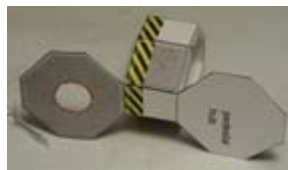
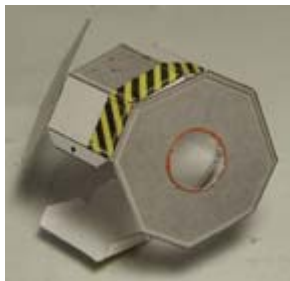
IT'S LIKE A FIRE HOSE . . . EXCEPT FOR
THE DEPLETED URANIUM.



ASSEMBLING THE MULTI-GUN MOUNT

The mount for the multi-gun consists of a pedestal (hub and four legs), a firing platform, and a pintle.

- Score, cut, and fold the pieces.
- Cut out the red-rimmed circle on the hub trimming so that the pintle will fit snugly.
- Glue the hub black-dot tab to its opposite edge.
- Fold the hub ends over and glue to the tabs.
- For each leg, glue the black-dot tab to the opposite edge, then fold the end over and glue to the tabs.
- Glue the legs to the white glue points on the hub. NOTE: be sure the white sides of the legs are facing downward, and that the legs and the hub sit level.

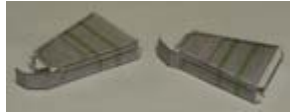
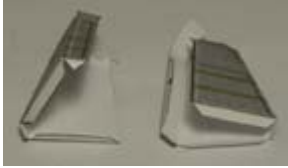


IT'S LIKE A FIRE HOSE . . . EXCEPT FOR
THE DEPLETED URANIUM.



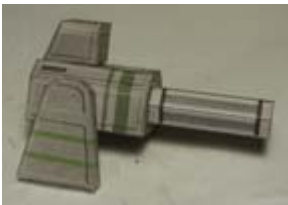
AZIMUTH YOKE SIDE MOUNTS

- For each side mount, glue the black dot tab to the opposite side.
- Glue the top three sides to the tabs.
- Set aside.



FINAL ASSEMBLY OF THE MULTI-GUN.

- Glue a side yoke to the side of the multi-gun body. The gun should be level or only slightly elevated.
- Glue the second yoke to the opposite side of the multi-gun body, being careful to make sure the two azimuth yoke side mounts are aligned (flip the gun assembly upright and check to make sure it will sit level).
- Aligning the assembly with the reinforcers on the platform's underside, glue the gun assembly to the firing platform.



IT'S LIKE A FIRE HOSE . . . EXCEPT FOR
THE DEPLETED URANIUM.



ASSEMBLING THE MODULAR BRIDGE

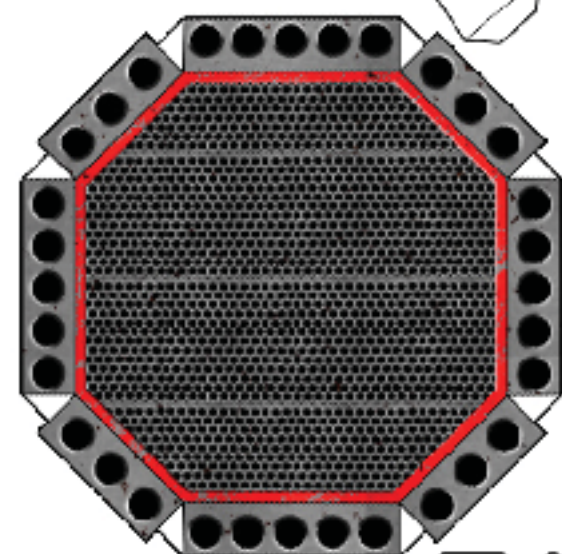
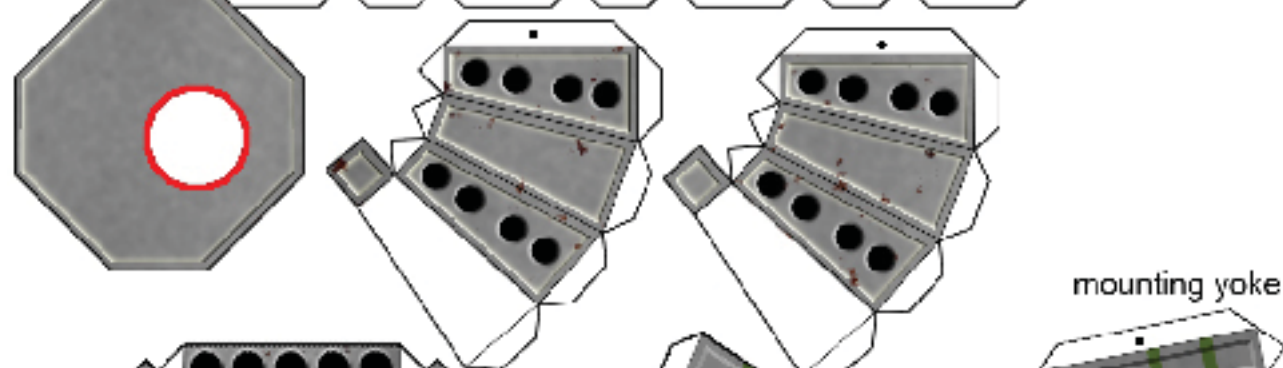
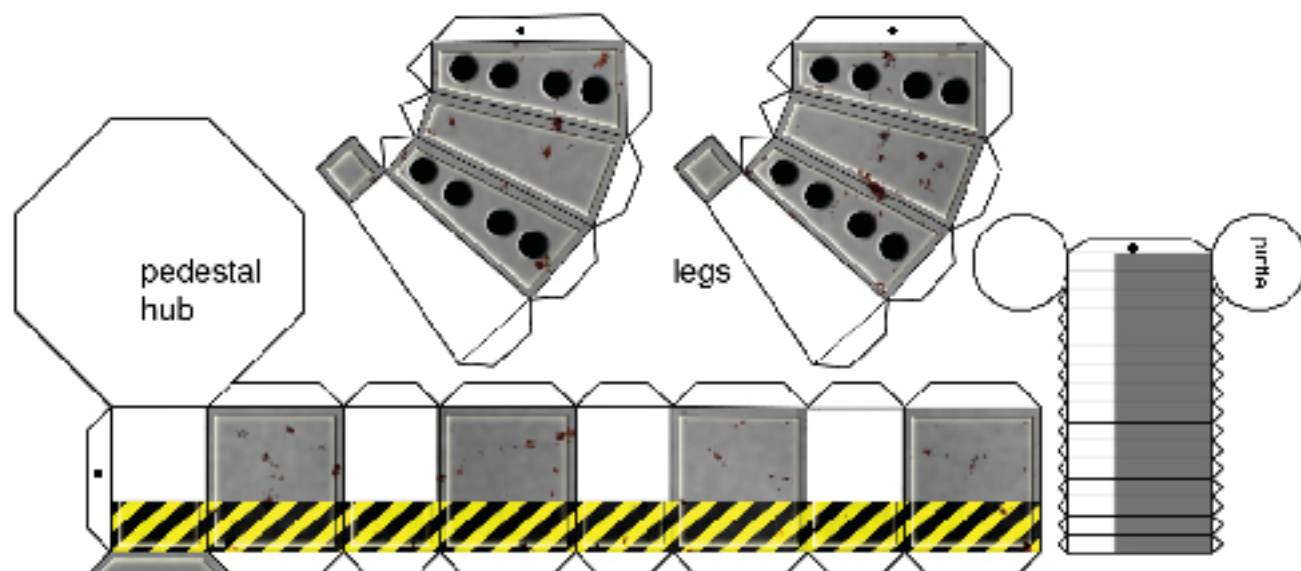
The bridge consists of the basic modules: the main bridge unit and the ramp. Both are assembled the same way.

- Cut, score, and fold the pieces.
- Fold the bridge/platform module side down.
- Glue the sides to the tabs.

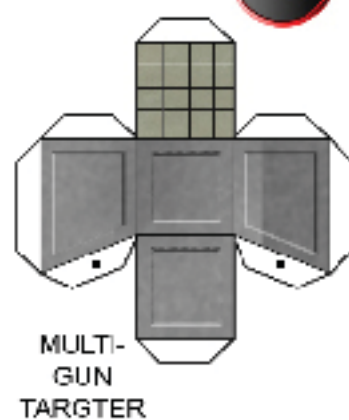
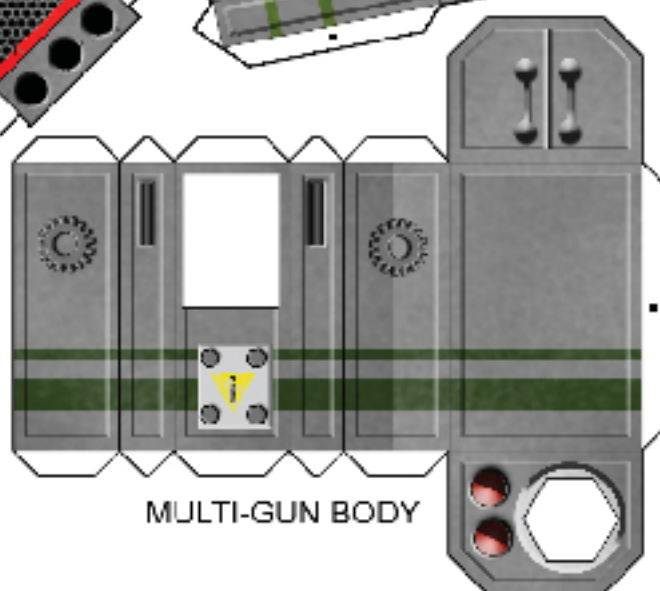
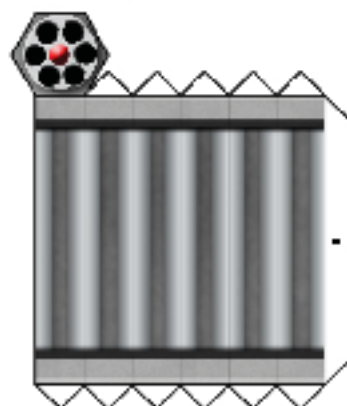


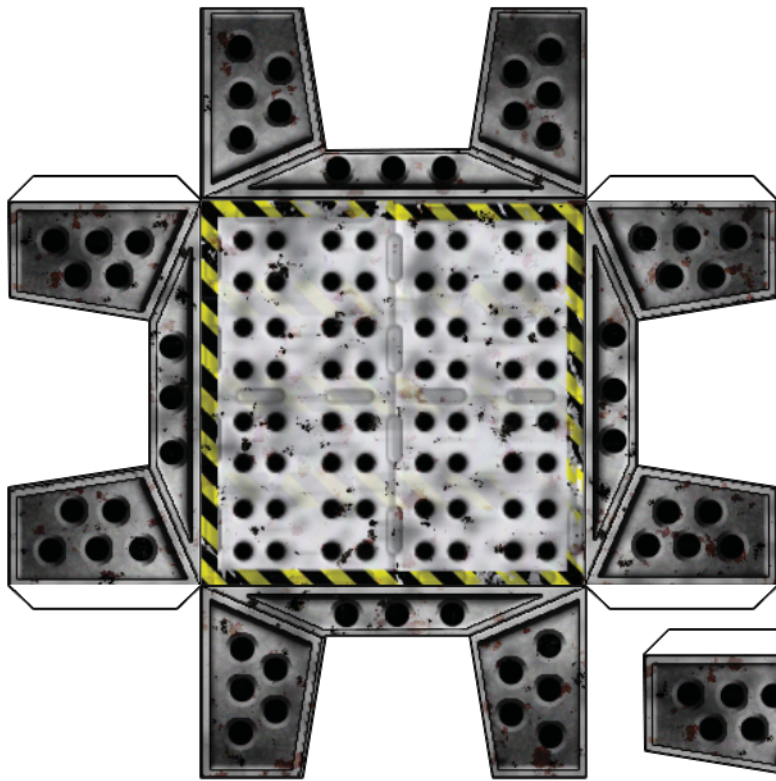
IT'S LIKE A FIRE HOSE . . . EXCEPT FOR
THE DEPLETED URANIUM.





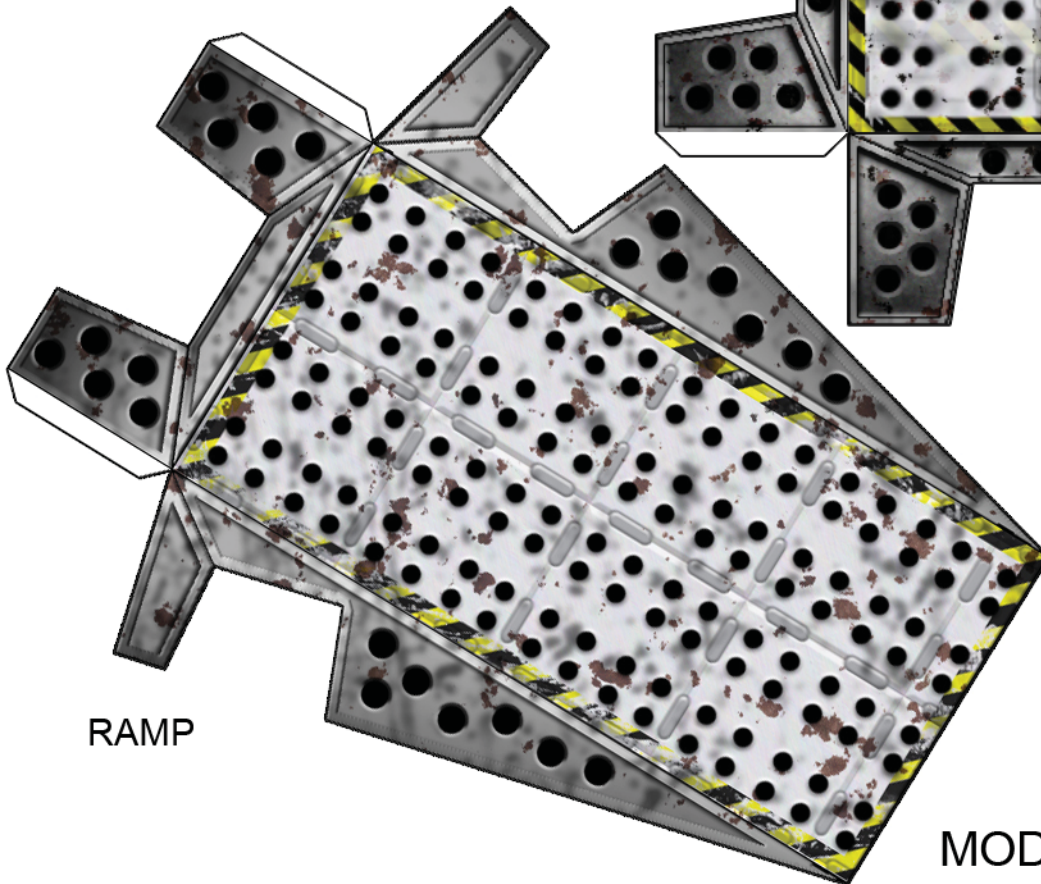
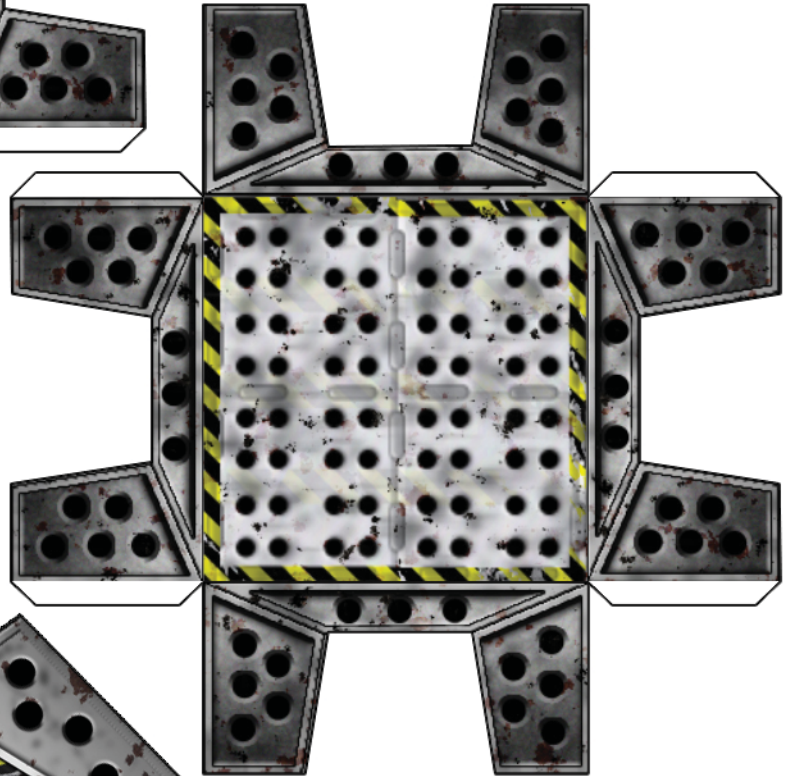
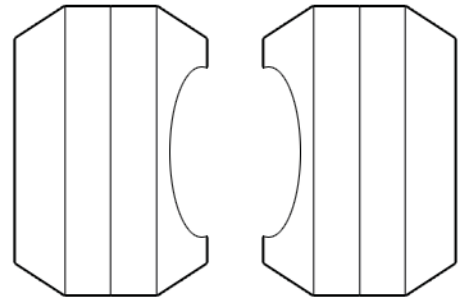
MULTI-GUN BARRELS





BRIDGE/PLATFORM MODULES

BRACES FOR MULTI-GUN
PLATFORM



RAMP

MODULAR BRIDGE

ARSENAL-MULTI-GUN

Finger and Toe Models
© 2009
Glenn Williams

