

I:60 SCALE CARD MODEL



UD-41 UTILITY DROPSHIP

Page Count: 36

Difficulty Level: Intermediate

Dimensions: 3.94" x 12.61" x 13.85" (100mm x 320mm x 352mm)

Compatible with 28mm sized miniatures



COLORS AND OPTIONS



HELO DRAB



HAZE GRAY



DROPSHIP 01 "EXPEDITED DELIVERY"

Tail number 778062, nose code 01, assigned to USSV Tarawa.



DROPSHIP 02 "PEST CONTROL"

Tail number 778135, nose code 02, assigned to USSV Tarawa.



DROPSHIP 03 "PAIN TRAIN"

Tail number 778191, nose code 03, assigned to USSV Tarawa.

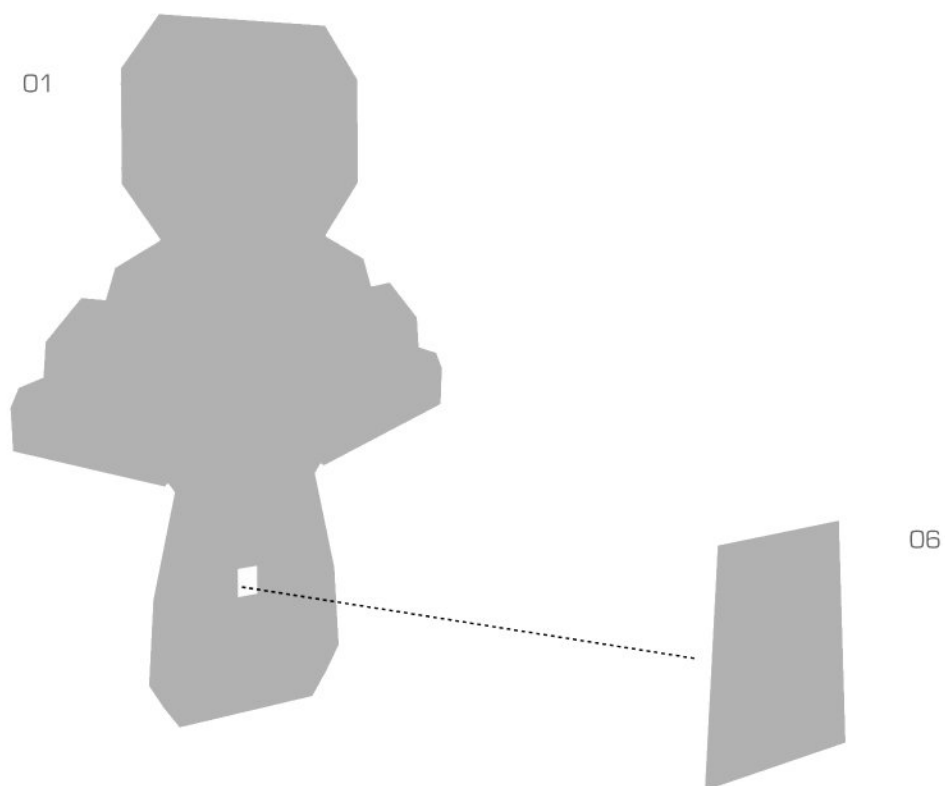


DROPSHIP 04 "HELLO NURSE!"

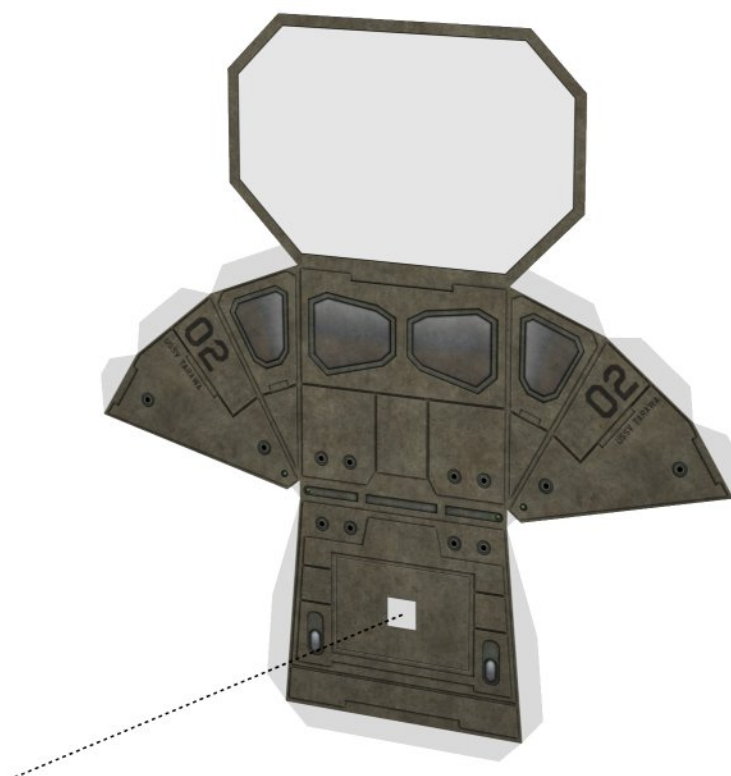
Tail number 781313, nose code 04, assigned to USSV Tarawa.

This dropship is marked as a medevac ship.

NOSE PREPARATION, STEP 1

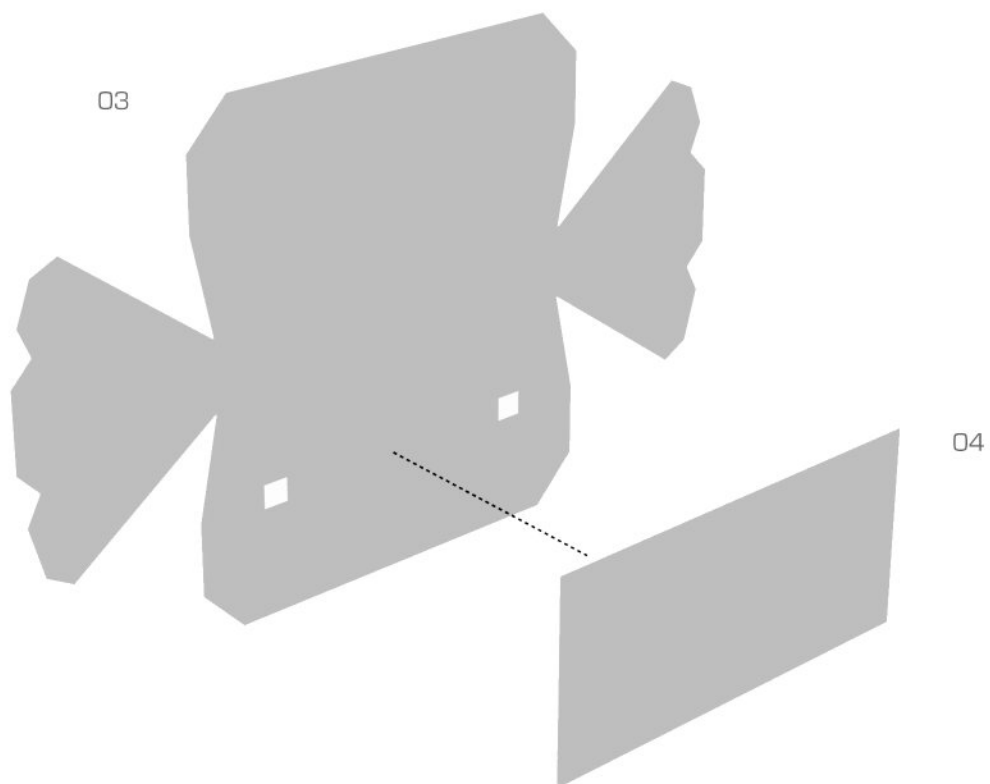


NOSE PREPARATION, STEP 2

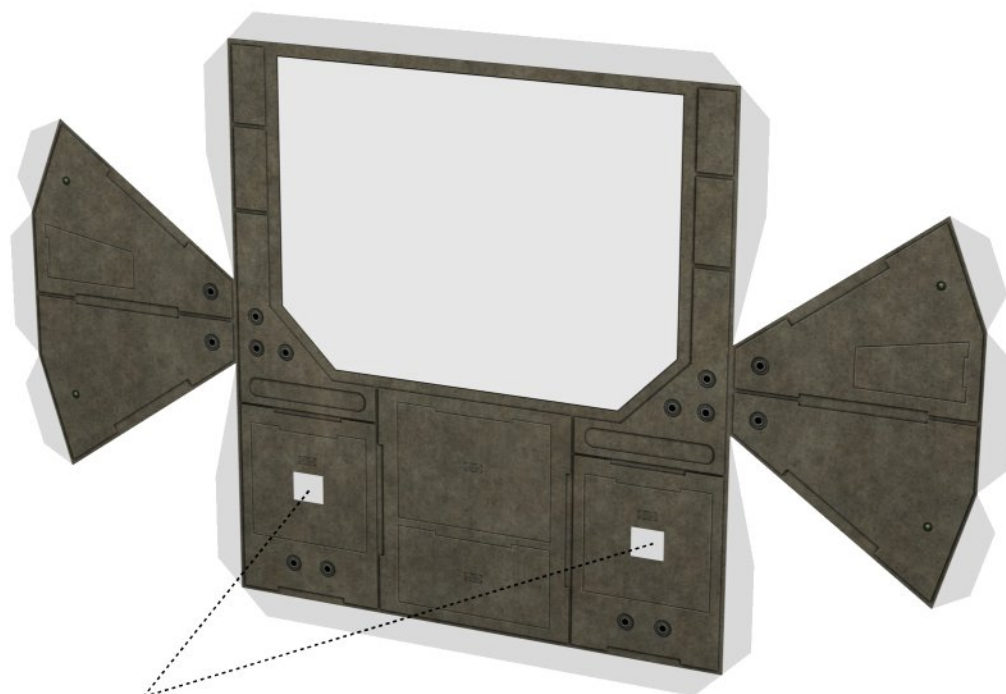


SLIT A "X" HERE AND FOLD IN THE TABS

FRONT FUSELAGE PREPARATION, STEP 1

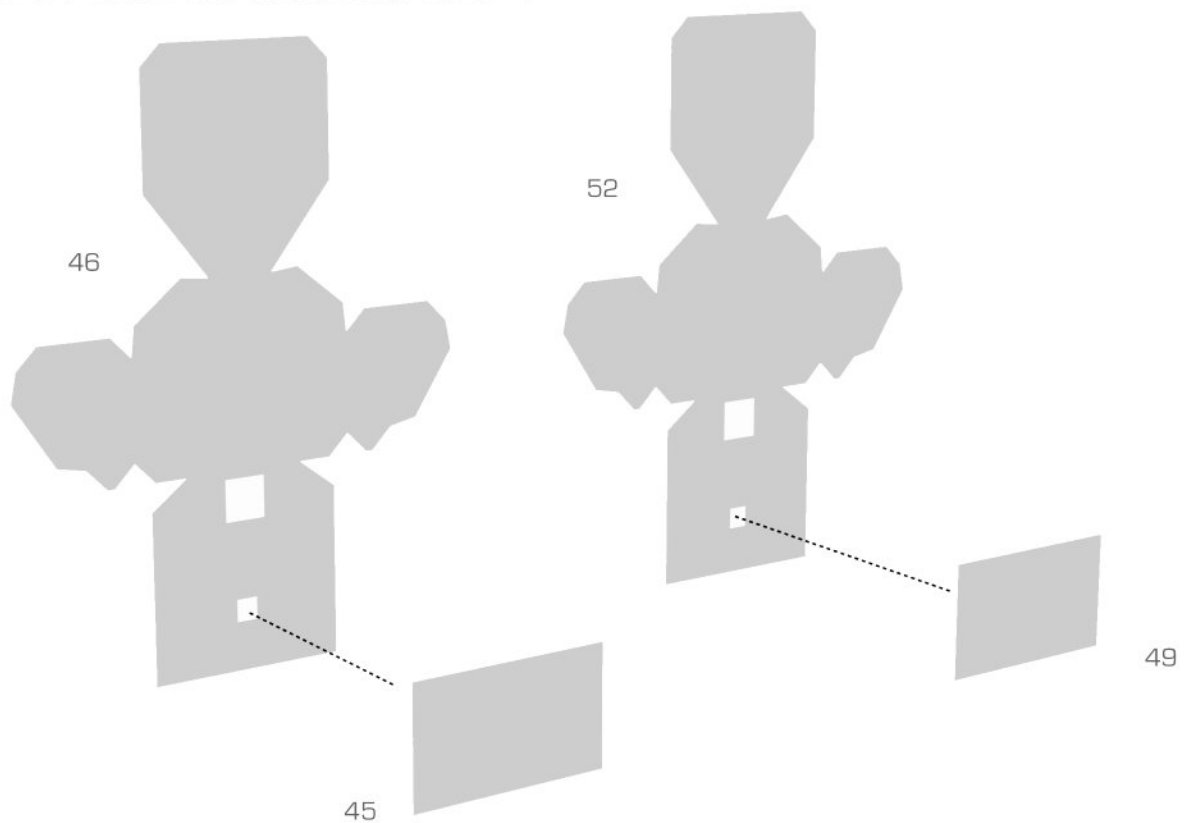


FRONT FUSELAGE PREPARATION, STEP 2

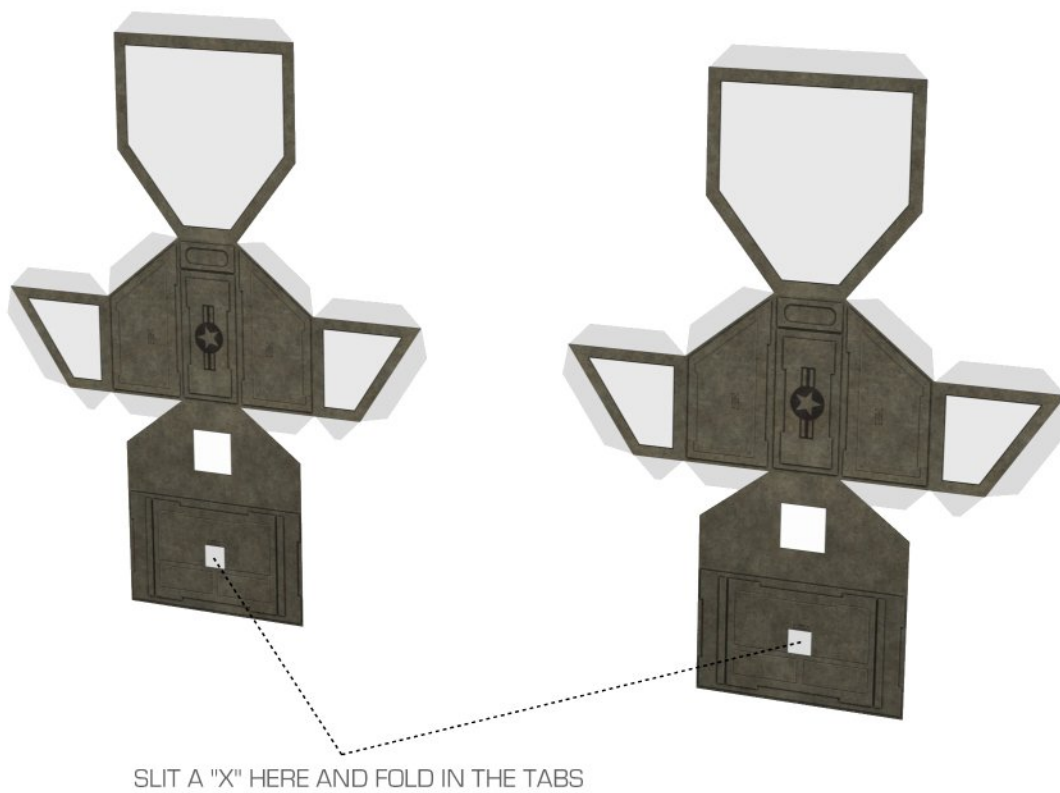


SLIT A "X" HERE AND FOLD IN THE TABS

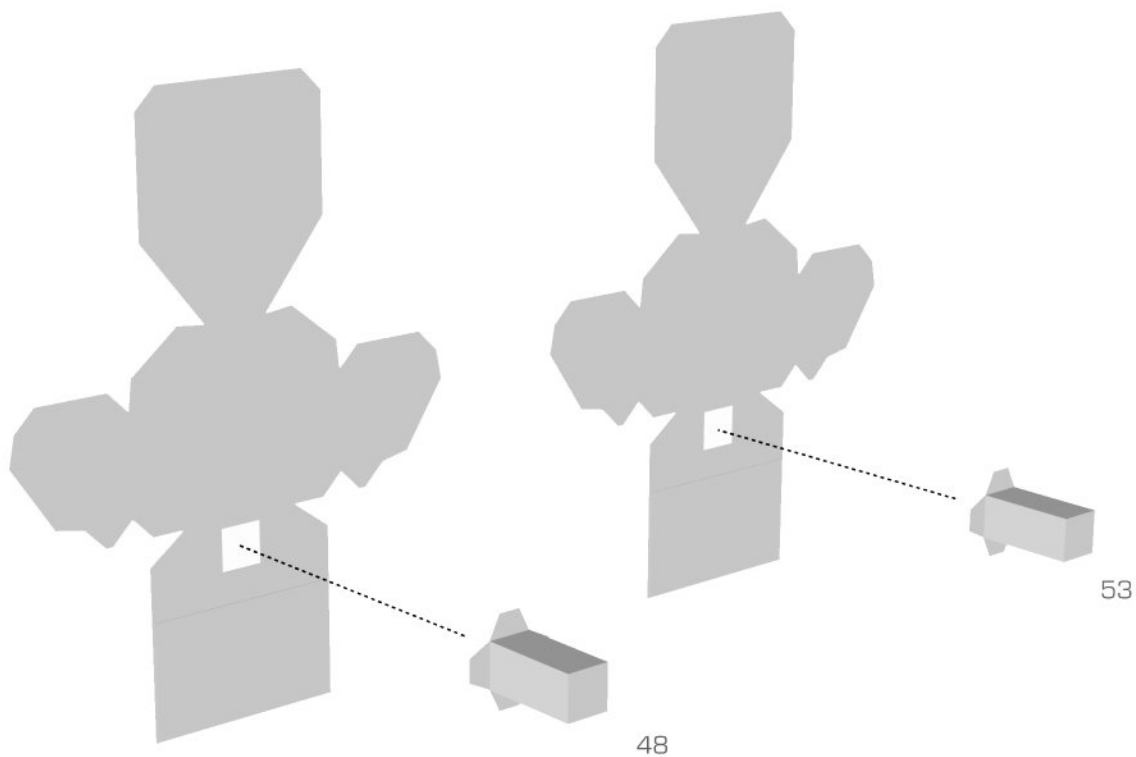
ENGINE PYLON PREPARATION, STEP 1



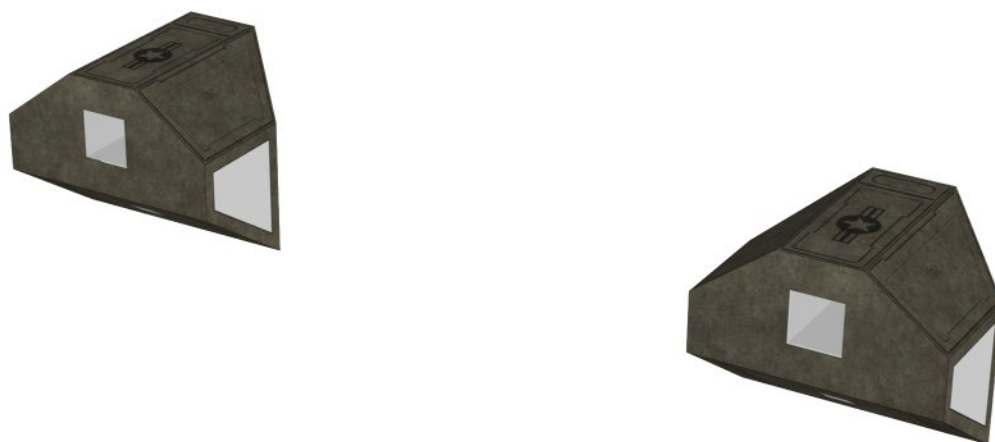
ENGINE PYLON PREPARATION, STEP 2



ENGINE PYLON PREPARATION, STEP 3



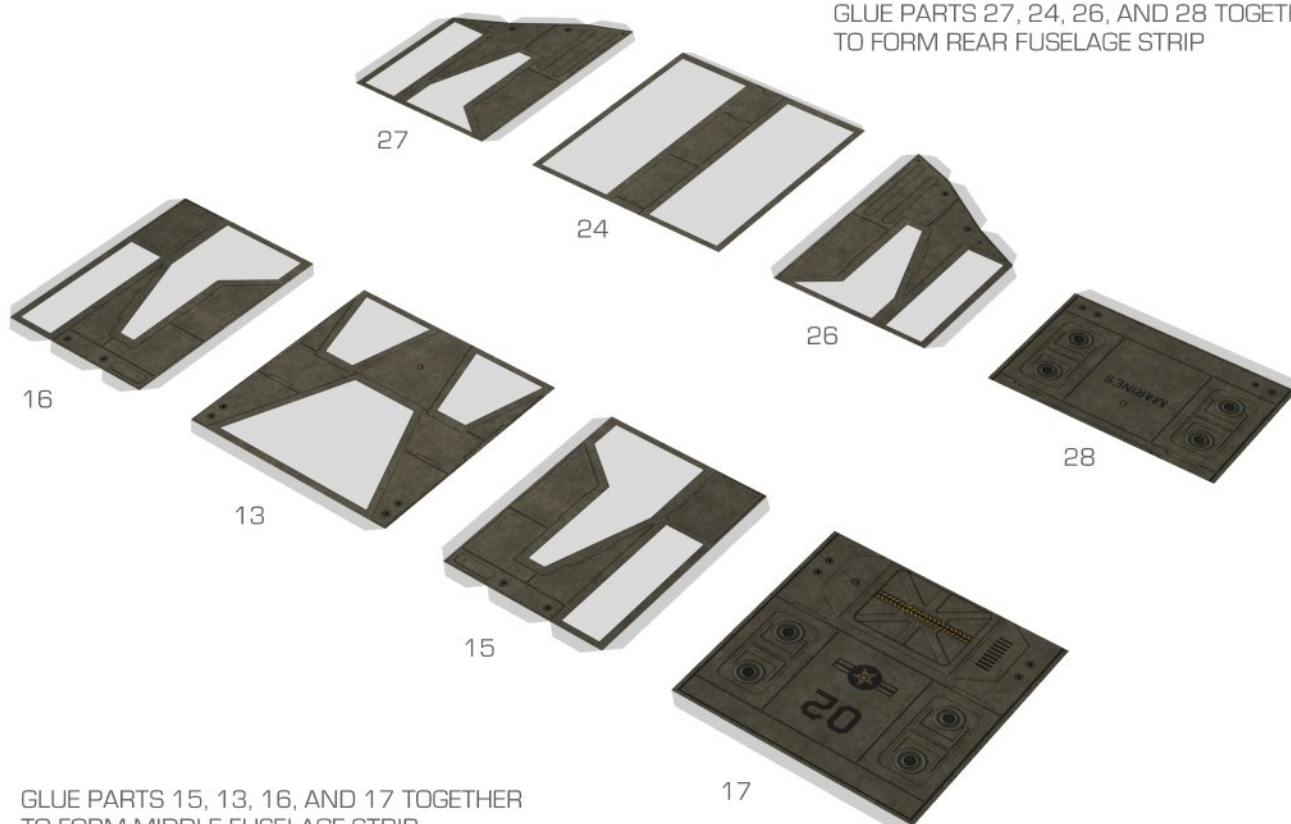
ENGINE PYLON PREPARATION, STEP 4



FOLD UP AND GLUE BOTH PYLONS INTO SHAPE

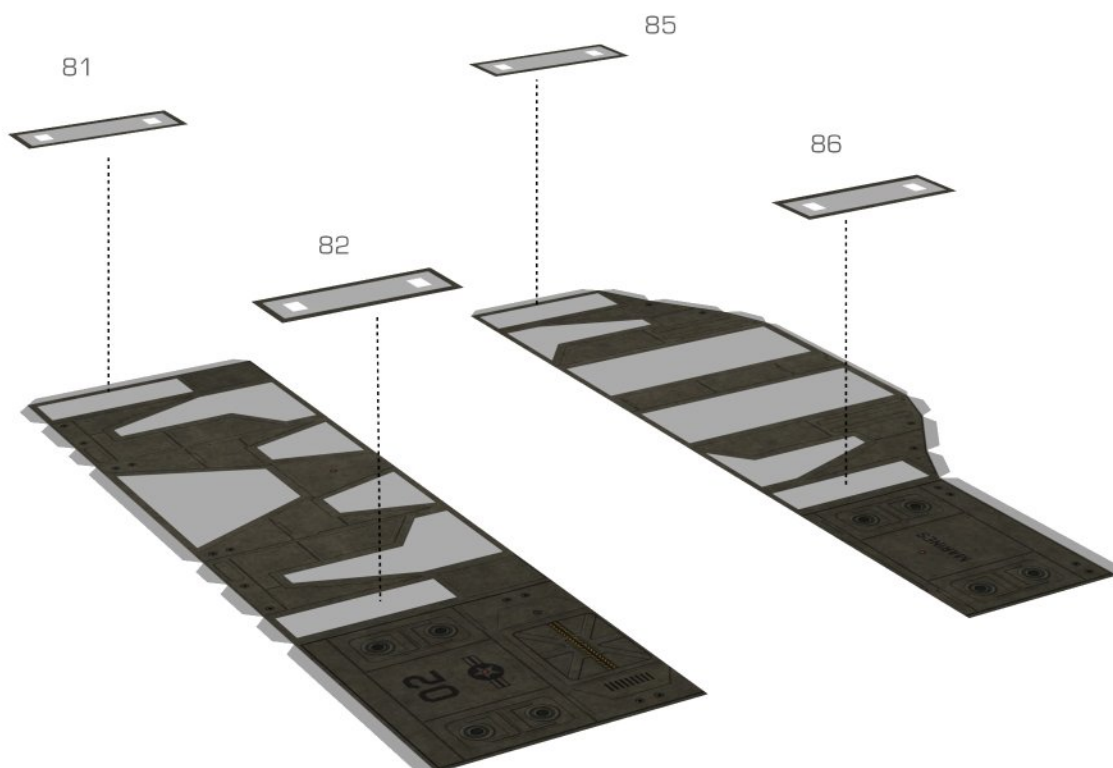
FUSELAGE PREPARATION, STEP 1

GLUE PARTS 27, 24, 26, AND 28 TOGETHER TO FORM REAR FUSELAGE STRIP

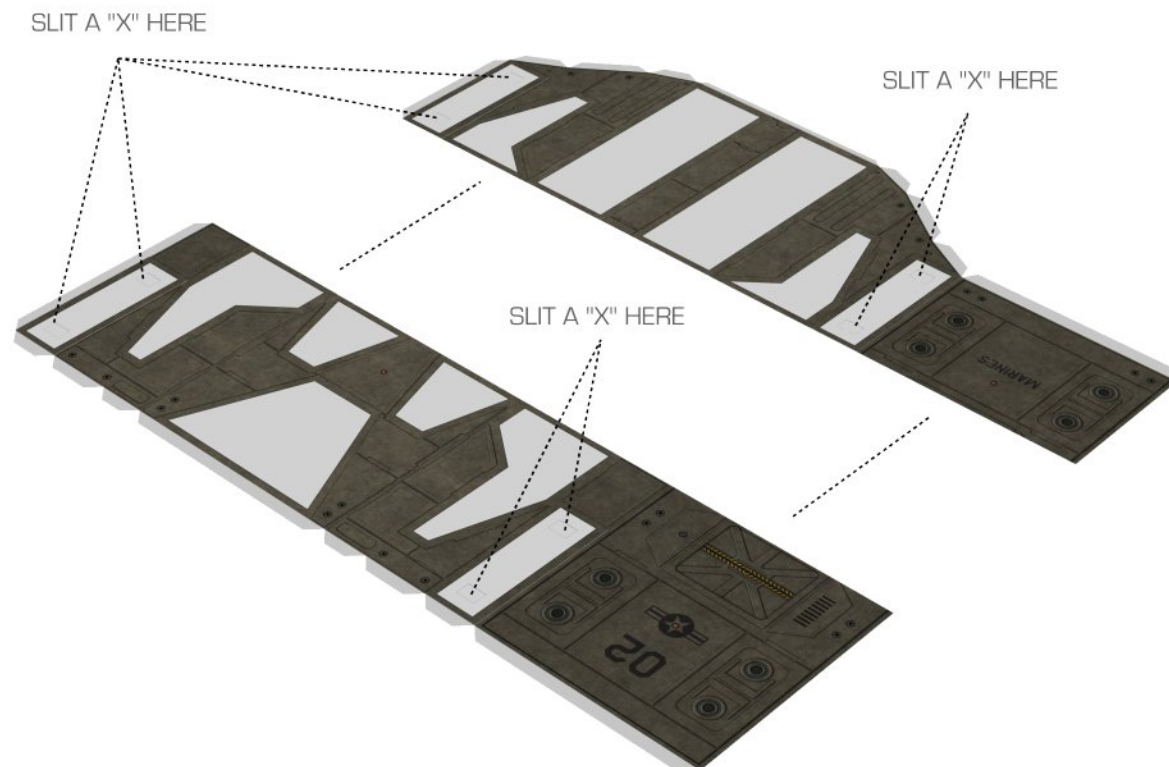


GLUE PARTS 15, 13, 16, AND 17 TOGETHER TO FORM MIDDLE FUSELAGE STRIP

FUSELAGE PREPARATION, STEP 2

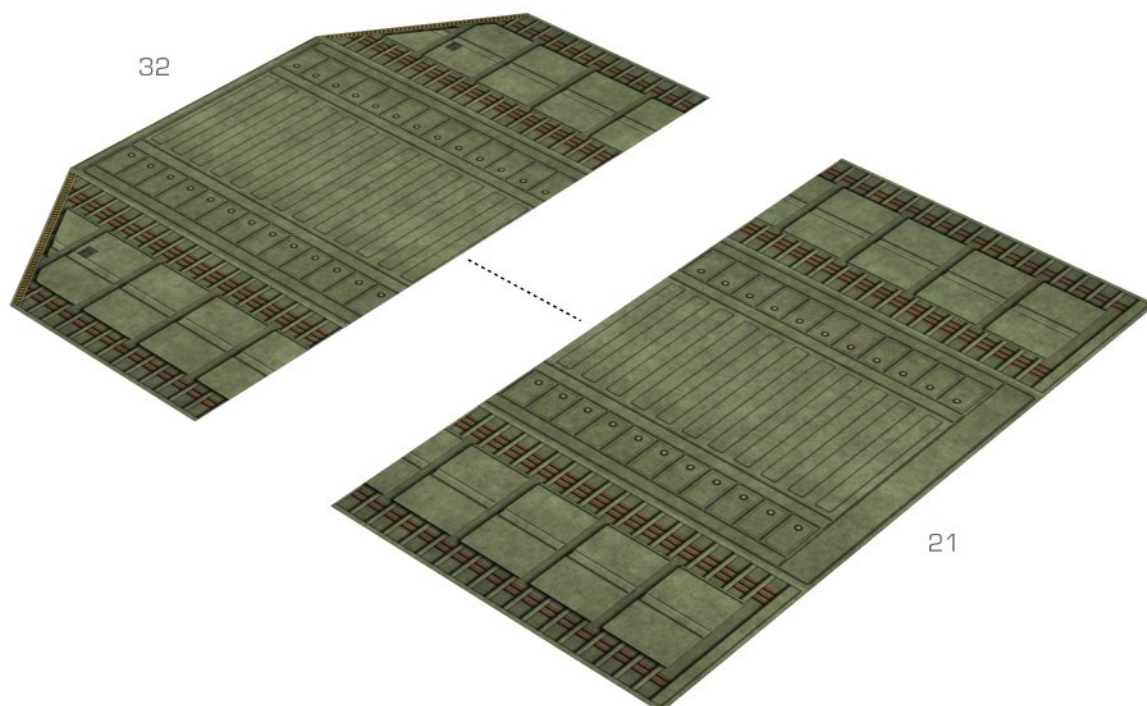


FUSELAGE PREPARATION, STEP 3



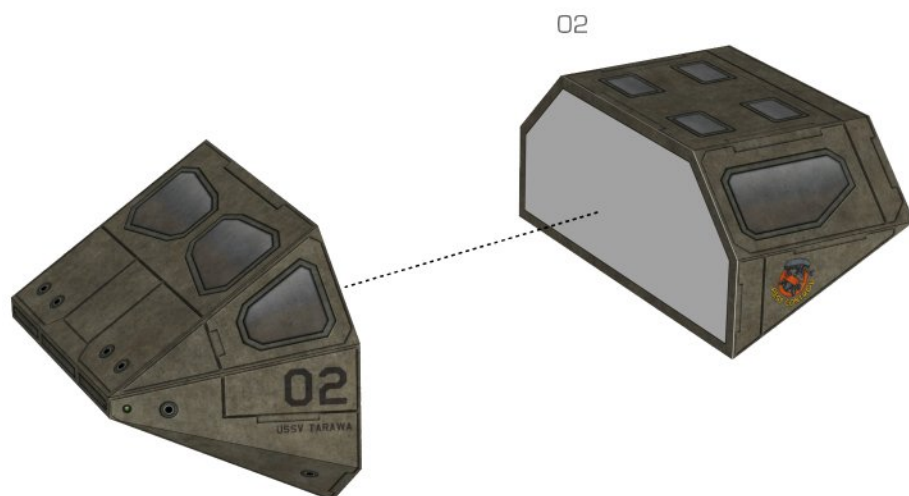
AFTER SLITTING, JOIN BOTH FUSELAGE STRIPS WITH TAPE ON THE UNPRINTED SIDE

CARGO BAY PREPARATION, STEP 1

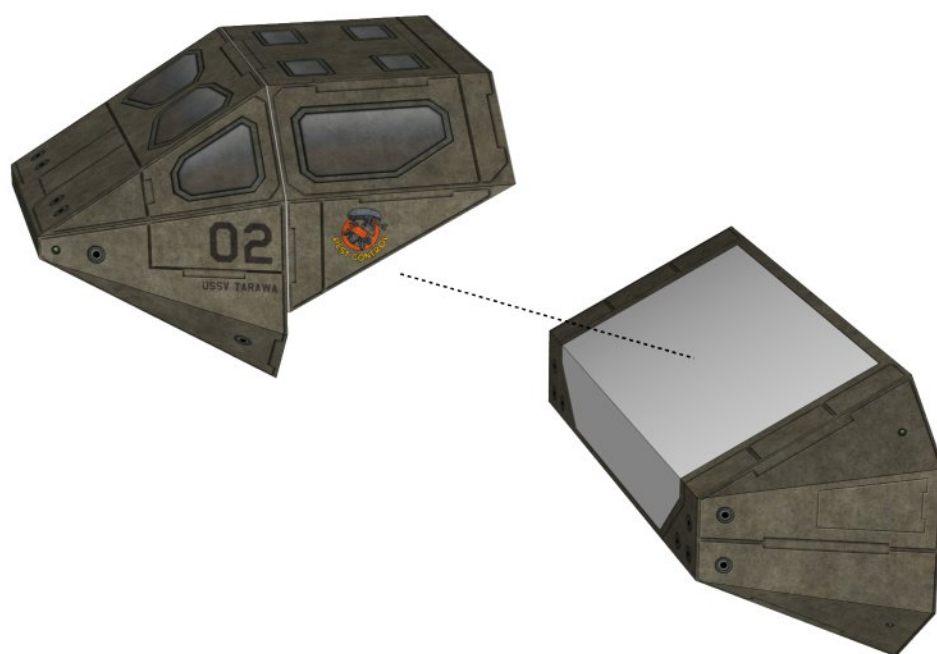


JOIN CARGO BAY SEGMENTS WITH TAPE ON THE UNPRINTED SIDE

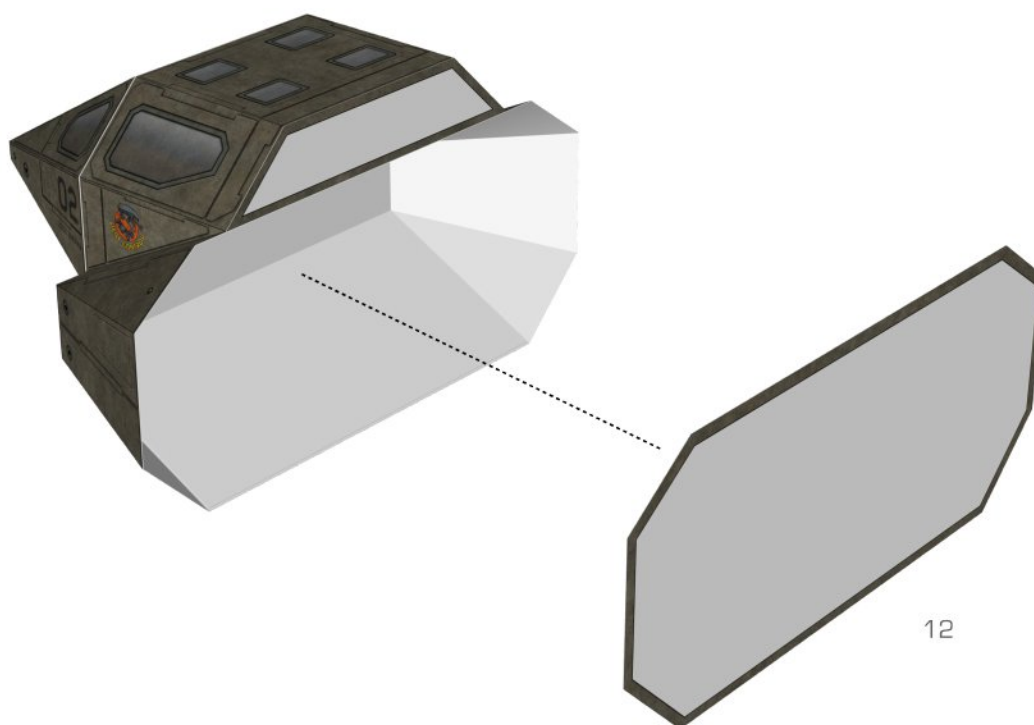
FRONT FUSELAGE, STEP 1



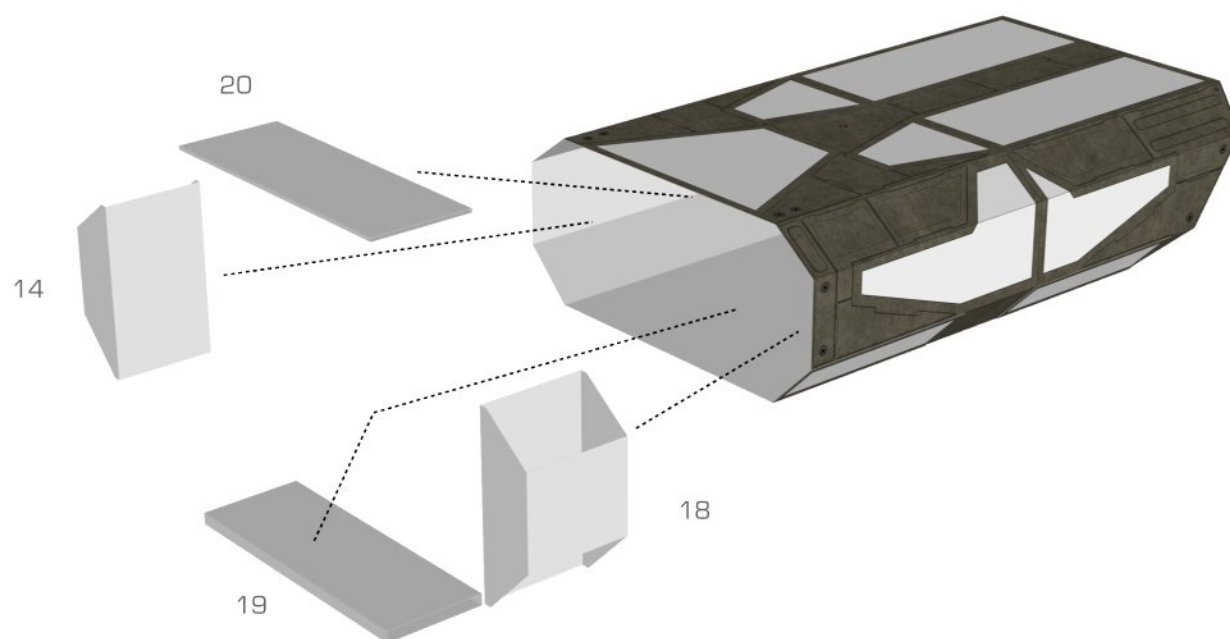
FRONT FUSELAGE, STEP 2



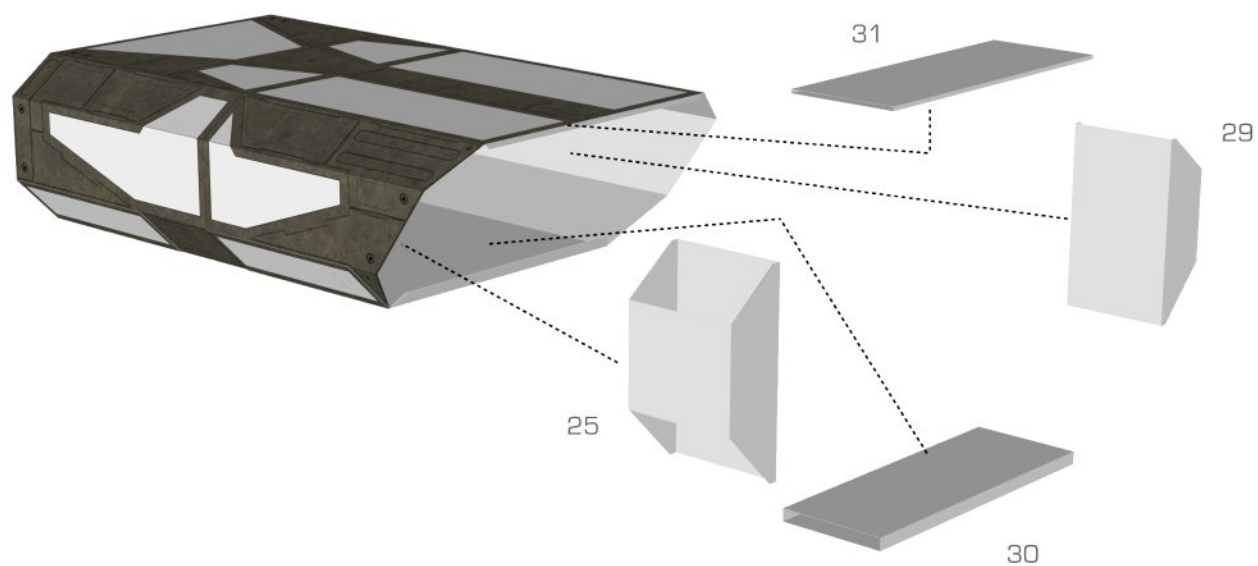
FRONT FUSELAGE, STEP 3



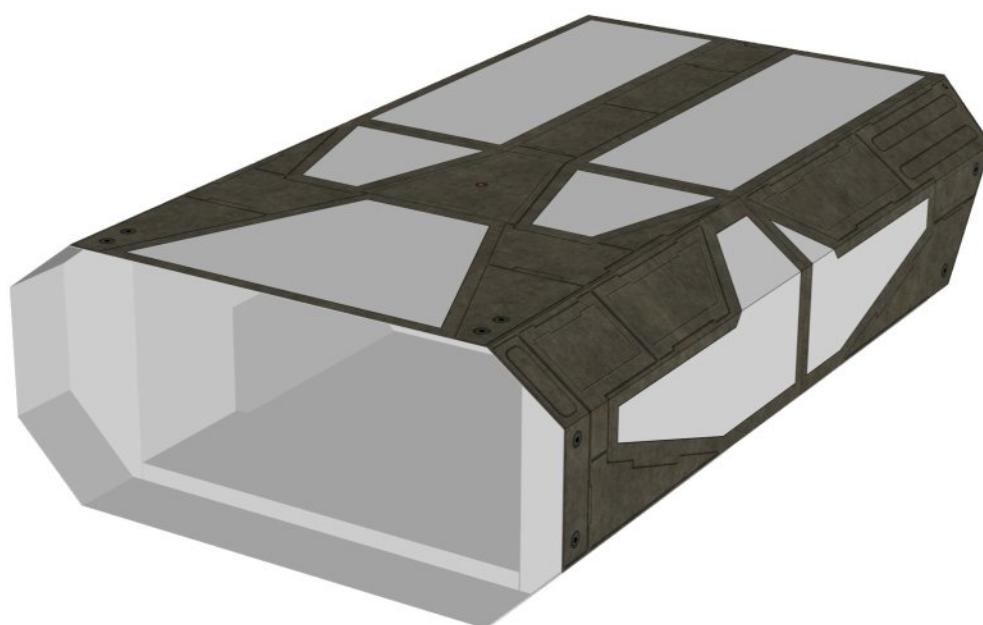
FUSELAGE REINFORCERS, STEP 1



FUSELAGE REINFORCERS, STEP 2

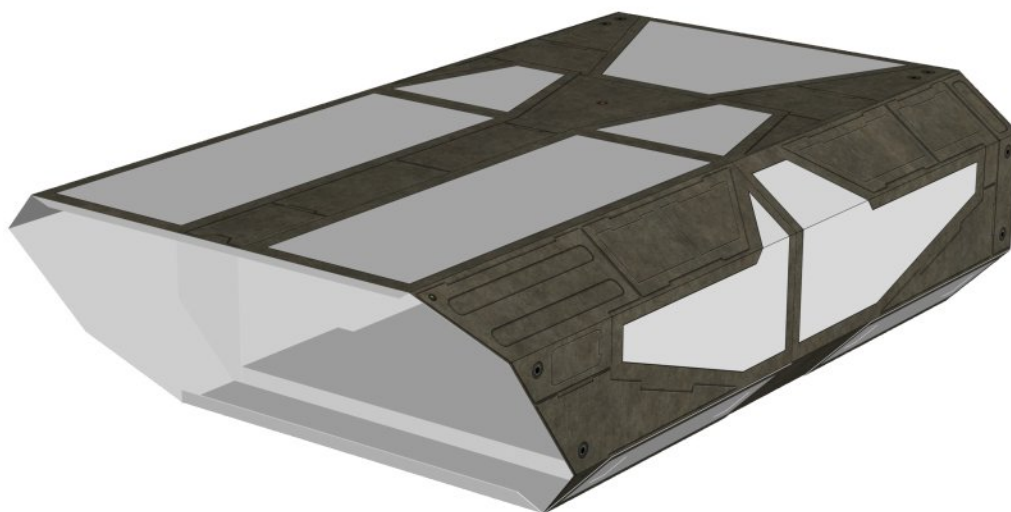


FUSELAGE REINFORCER REFERENCE, FRONT VIEW



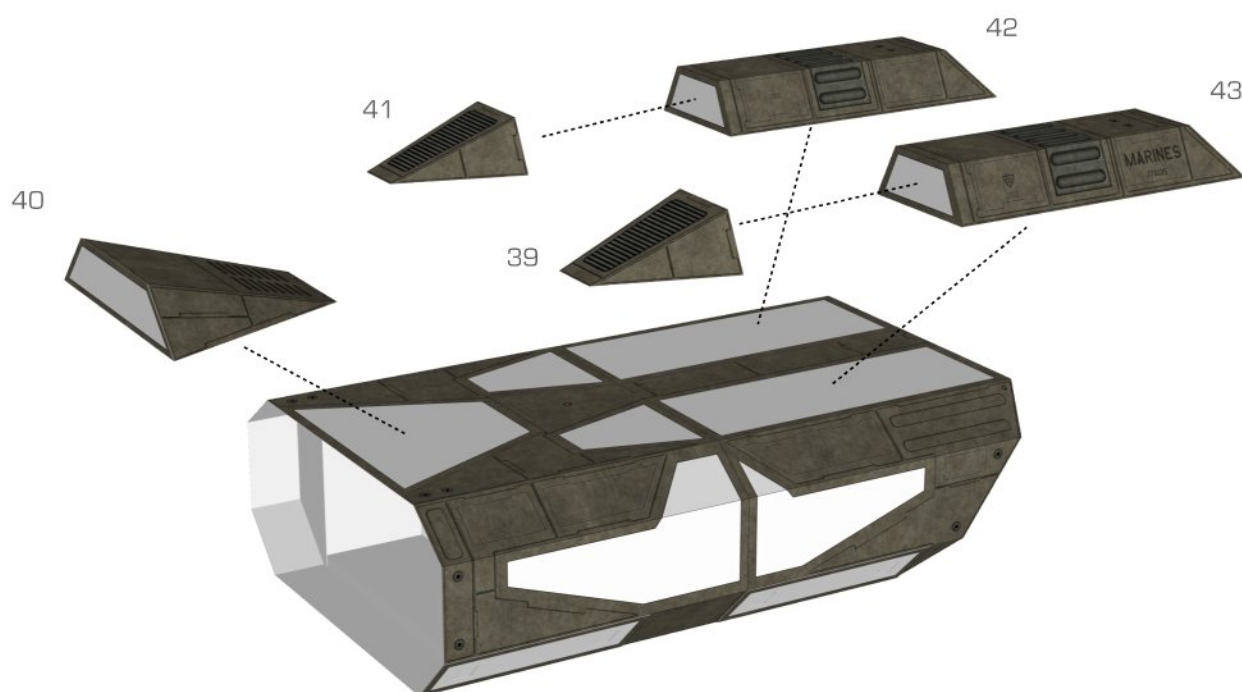
SIDE REINFORCERS NEED TO BE BETWEEN LANDING GEAR HOLES, TOP AND BOTTOM REINFORCERS SHOULD BE FLUSH WITH SIDE REINFORCERS

FUSELAGE REINFORCER REFERENCE, REAR VIEW

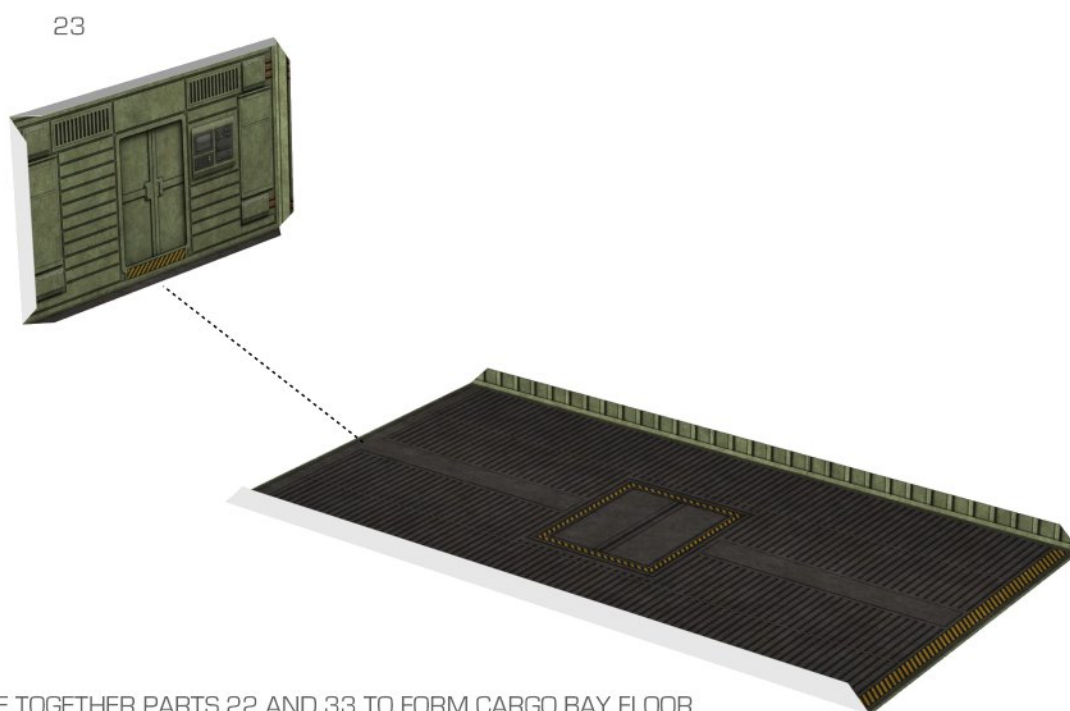


SIDE REINFORCERS NEED TO BE BETWEEN LANDING GEAR HOLES, TOP AND BOTTOM REINFORCERS SHOULD BE FLUSH WITH SIDE REINFORCERS

UPPER FUSELAGE DETAILS, STEP 1

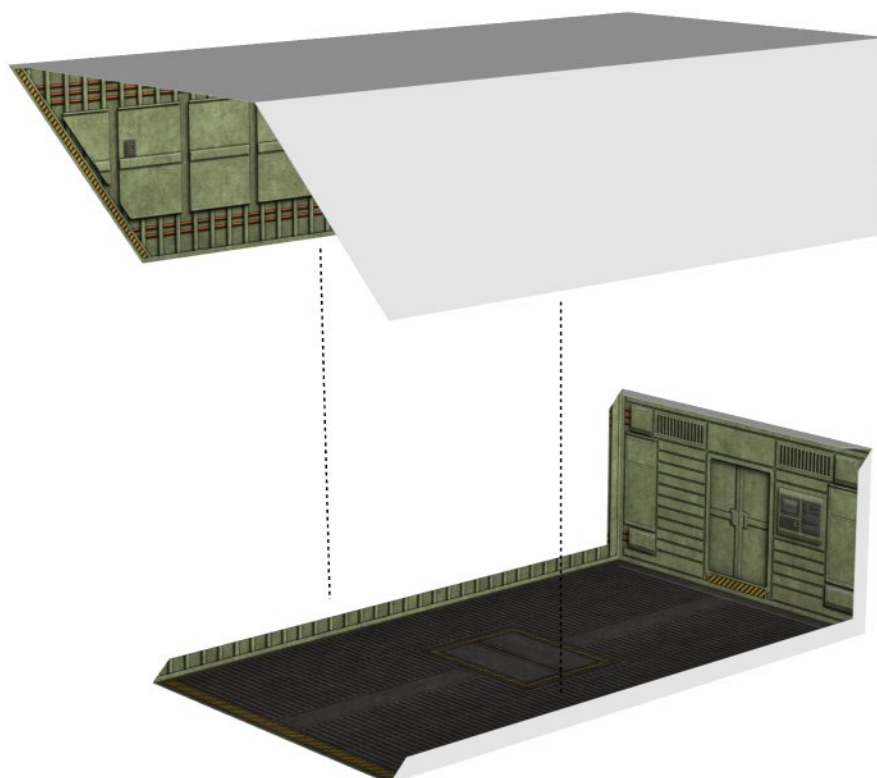


CARGO BAY, STEP 1

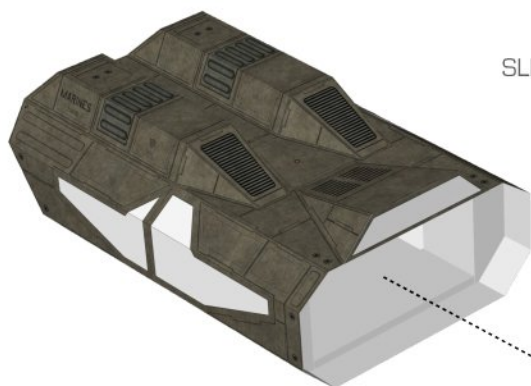


TAPE TOGETHER PARTS 22 AND 33 TO FORM CARGO BAY FLOOR

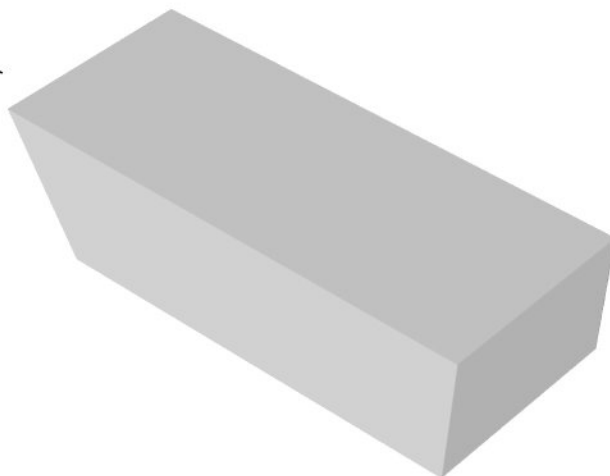
CARGO BAY, STEP 2



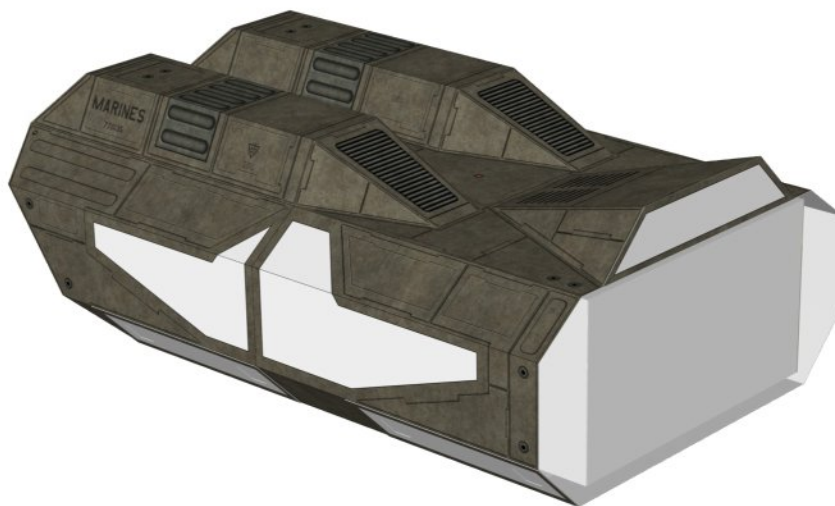
CARGO BAY, STEP 3



SLIDE CARGO BAY INTO OUTER FUSELAGE. NO GLUE IS NEEDED.

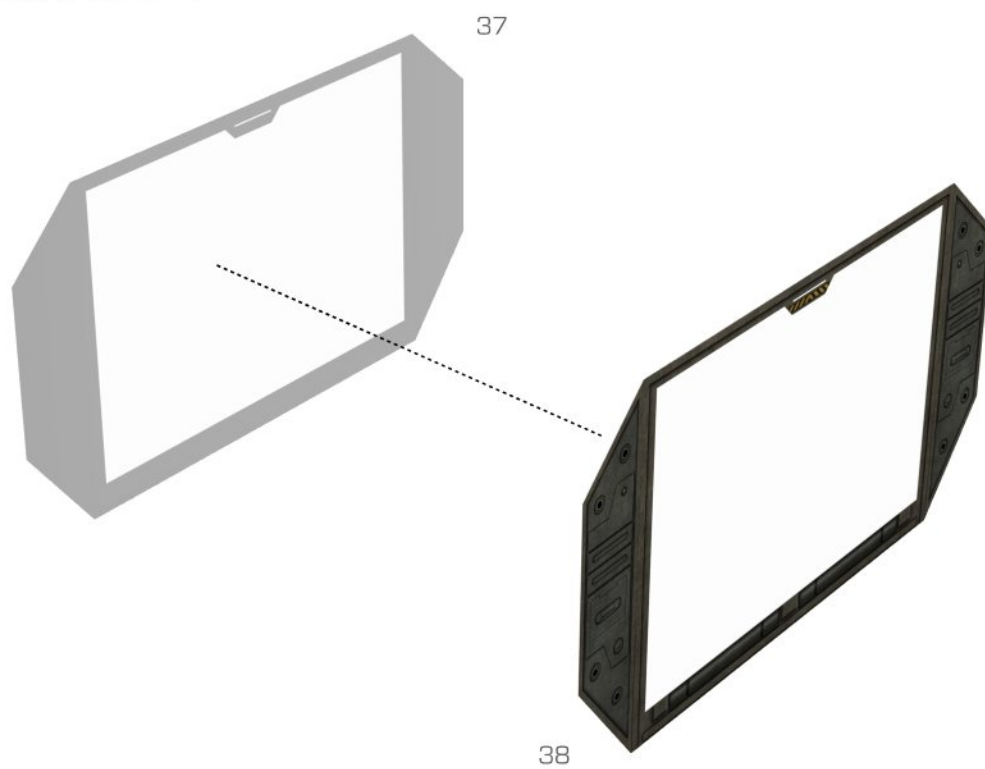


CARGO BAY REFERENCE

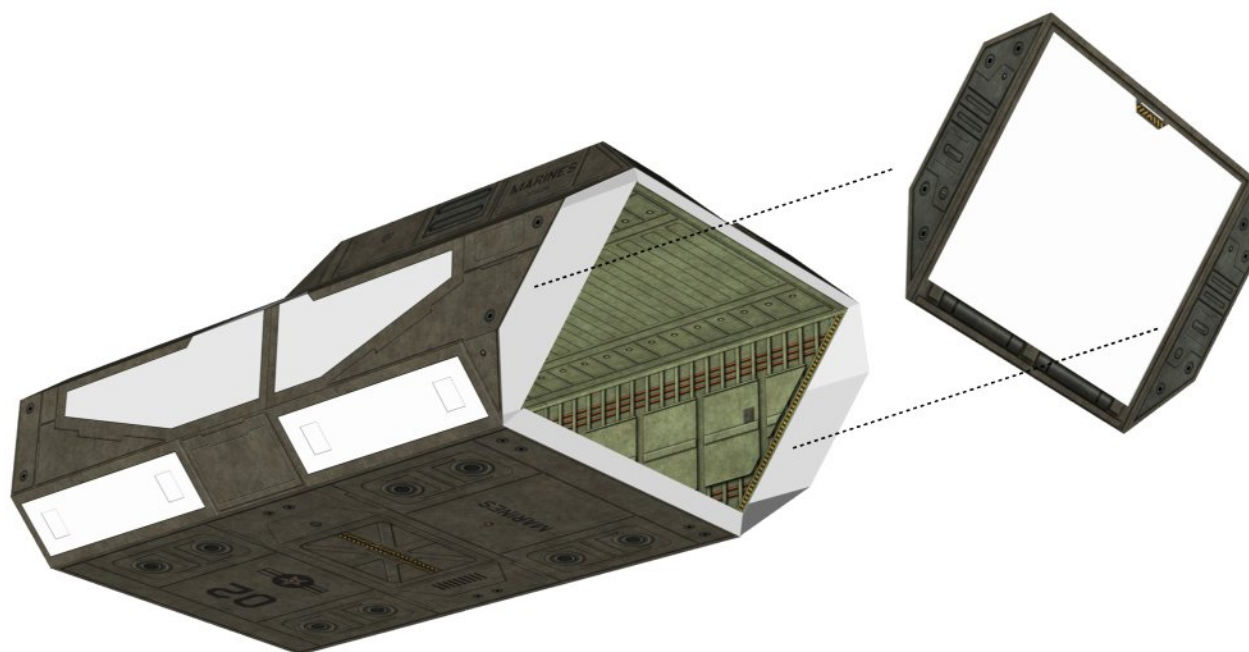


CARGO BAY SHOULD BE NEARLY FLUSH WITH THE FRONT OF THE MIDDLE FUSELAGE

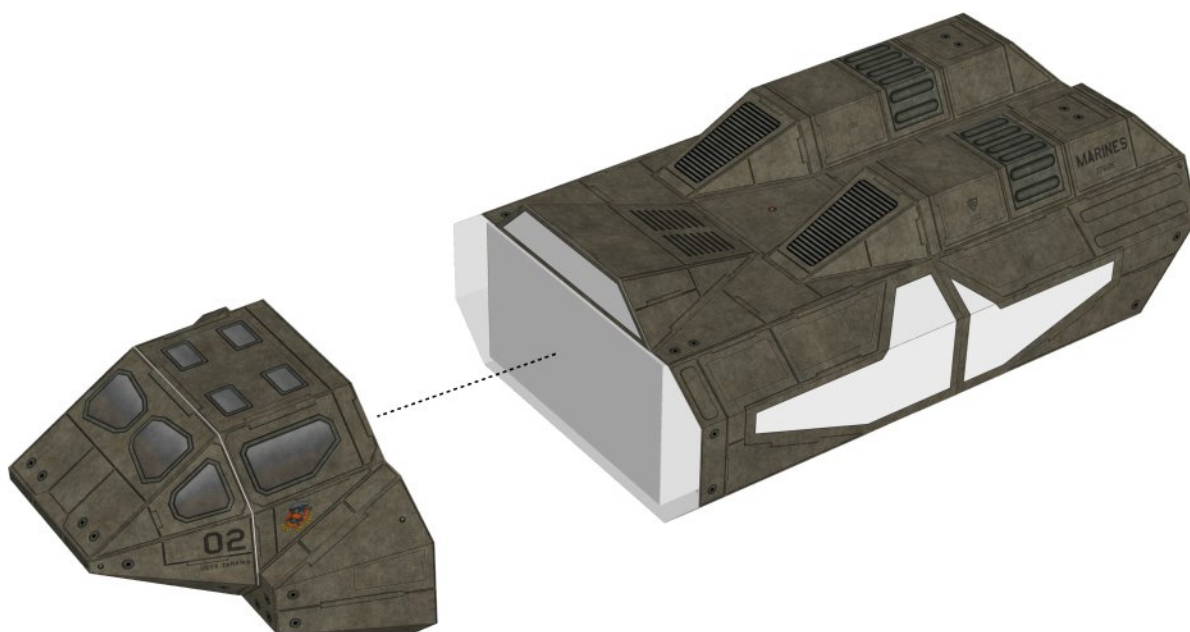
RAMP FRAME, STEP 1



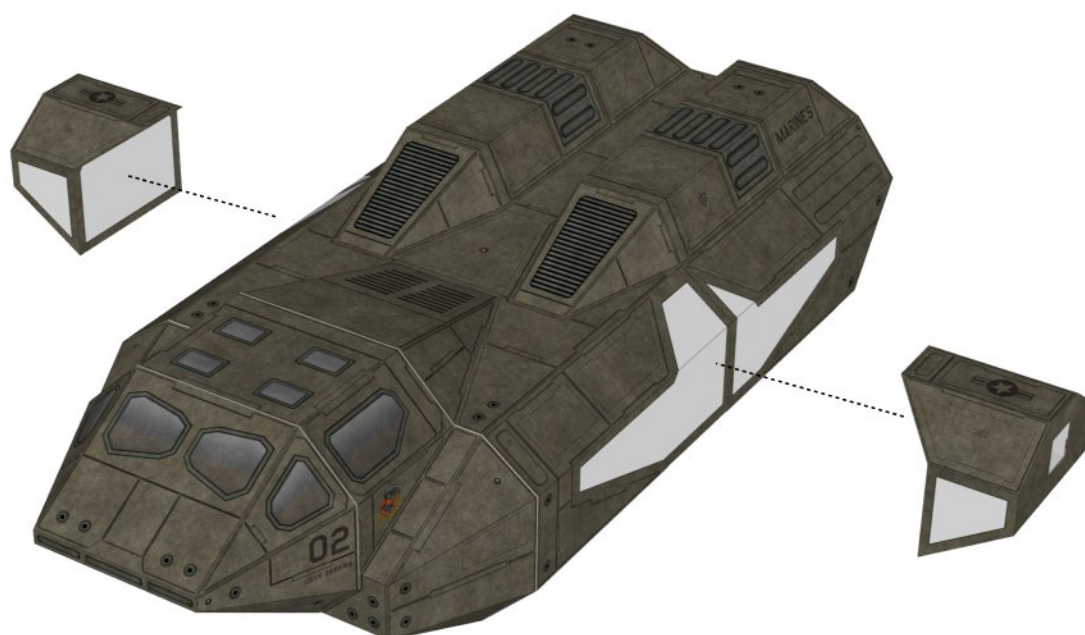
RAMP FRAME, STEP 1



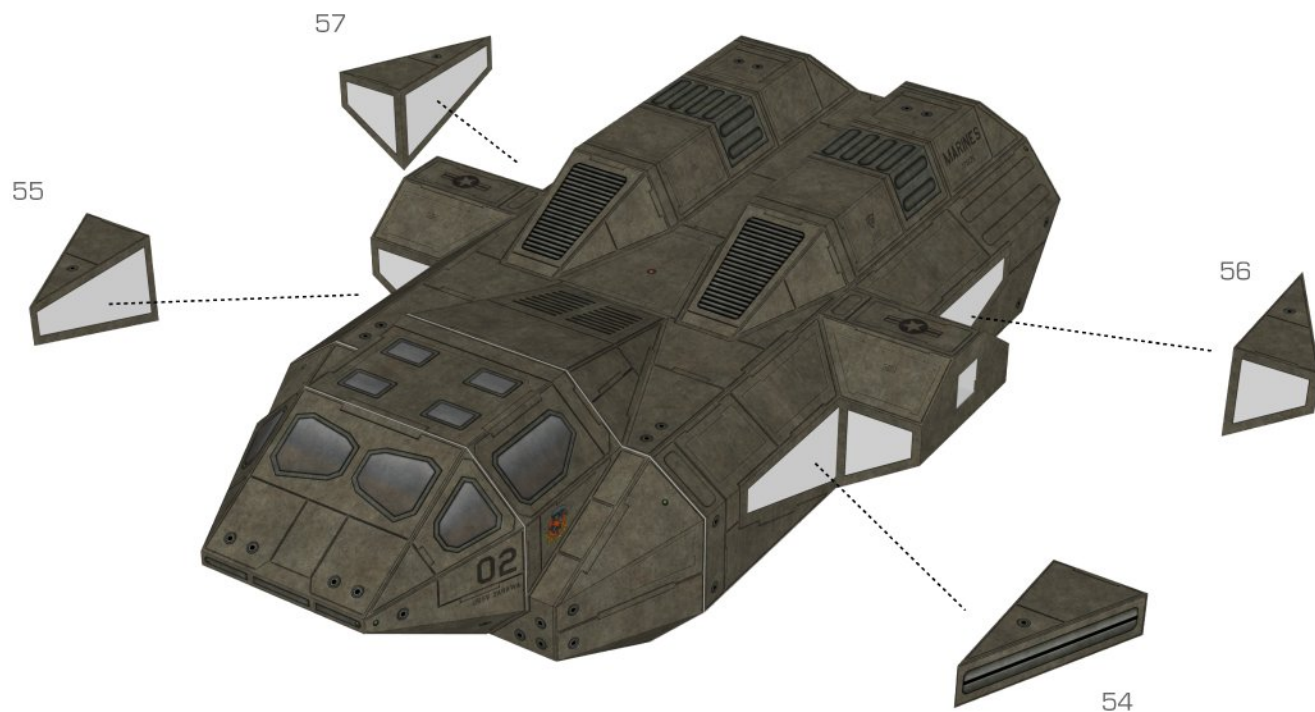
FINAL FUSELAGE ASSEMBLY, STEP 1



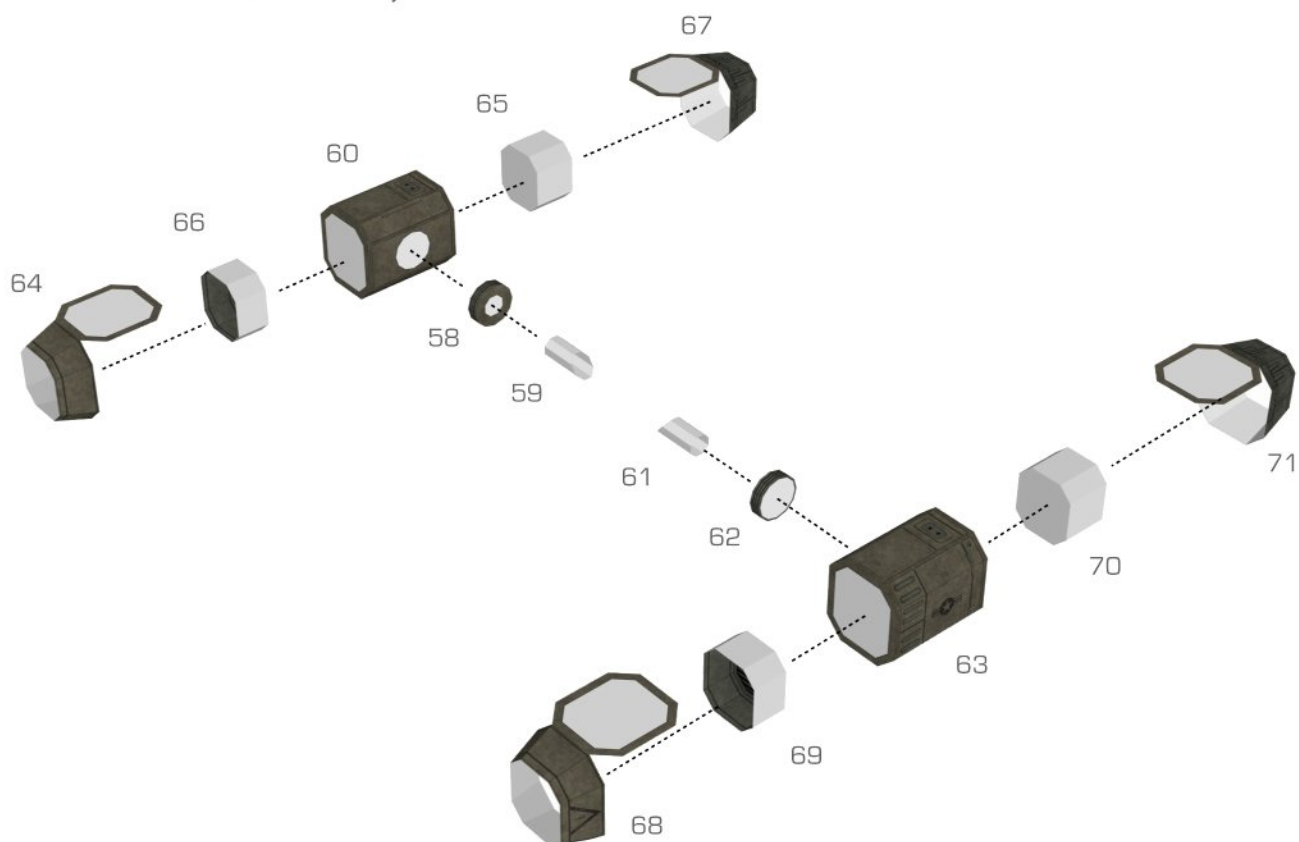
FINAL FUSELAGE ASSEMBLY, STEP 2



FINAL FUSELAGE ASSEMBLY, STEP 3



ENGINE POD ASSEMBLY, STEP 1

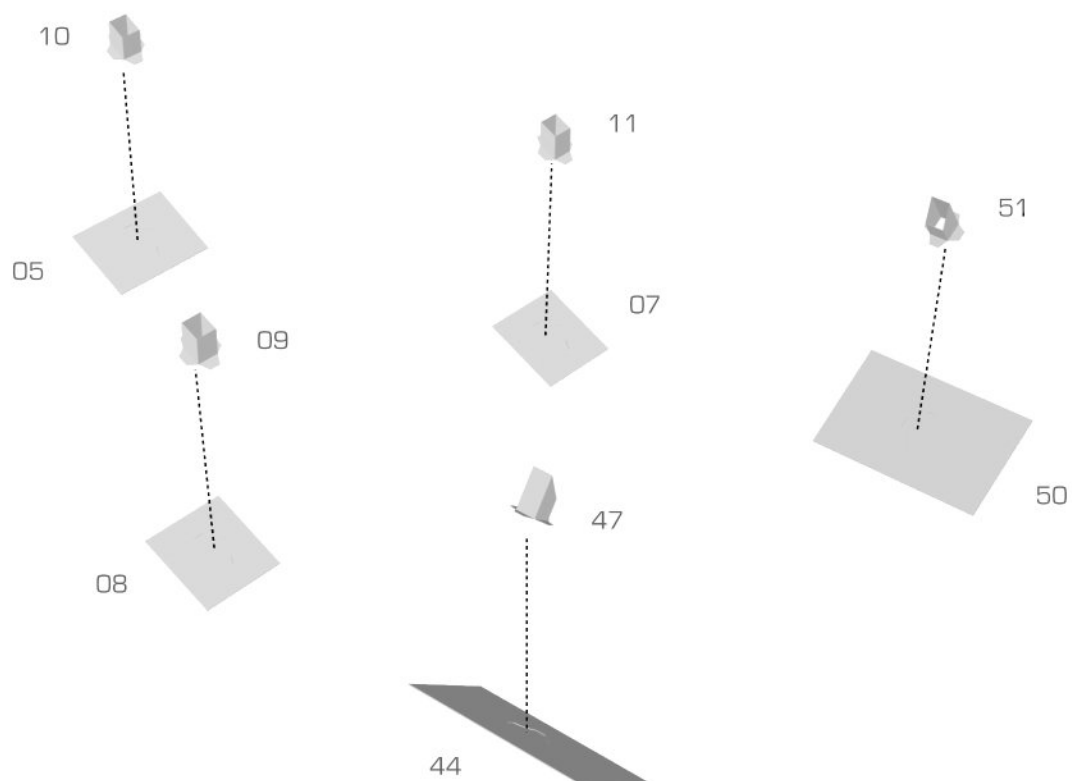


ENGINE POD INSTALLATION

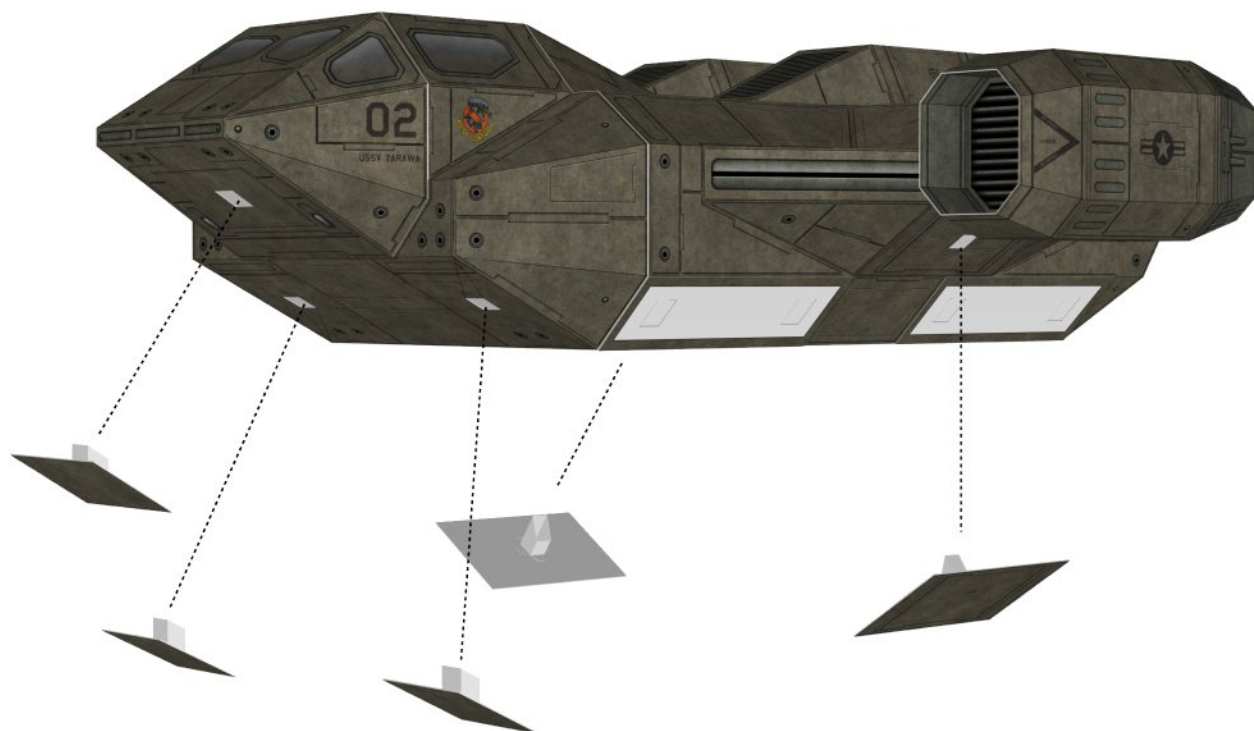


THE ENGINE PODS ARE DESIGNED TO BE REMOVABLE. DO NOT GLUE THEM TO THE FUSELAGE.

OPTION PLATES, STEP 1



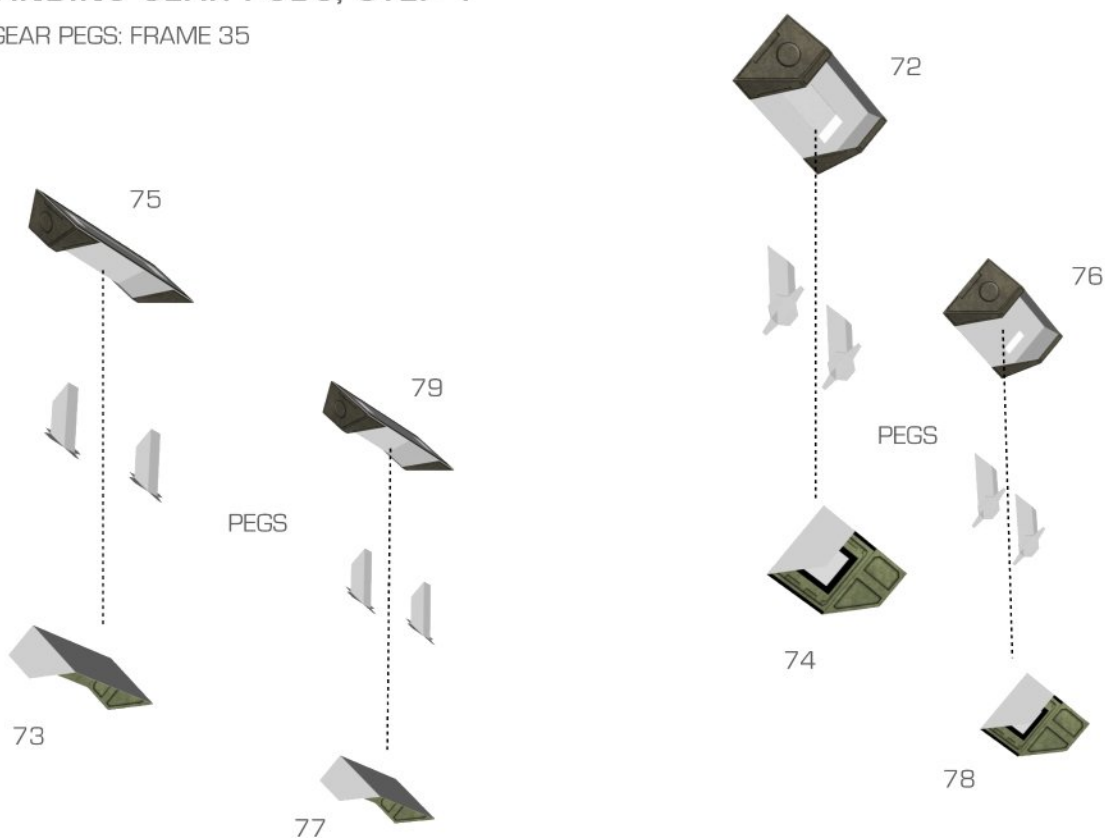
OPTION PLATES, STEP 2



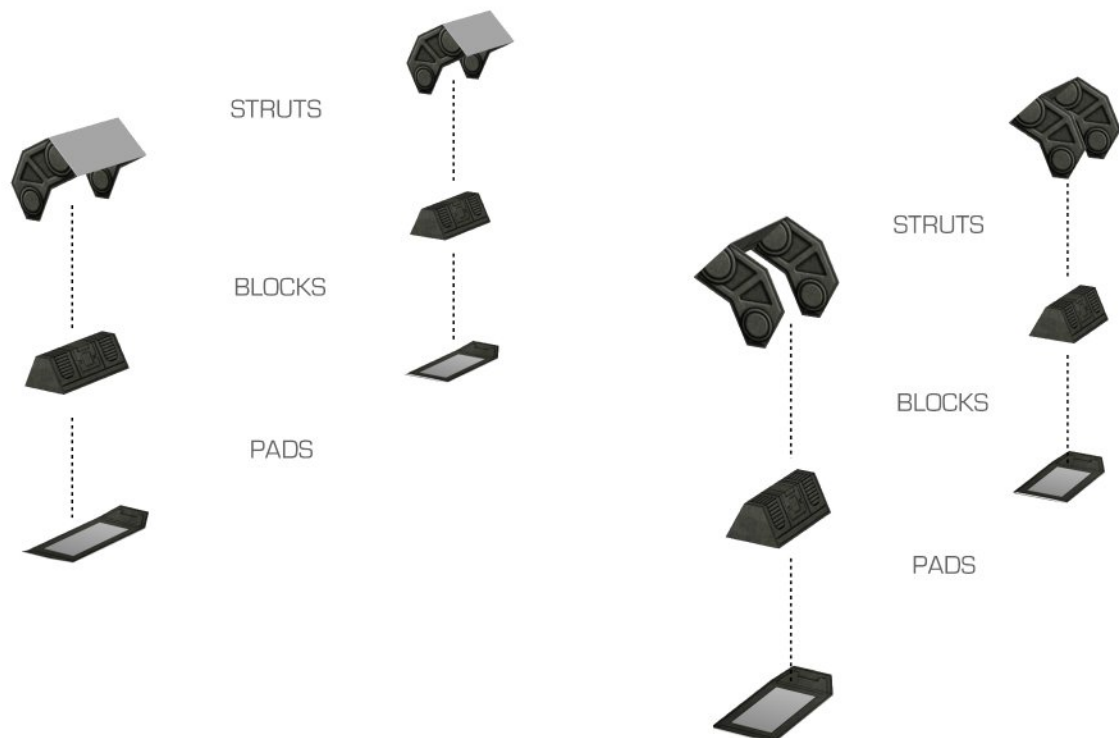
THE OPTION PLATES ARE DESIGNED TO BE REMOVABLE. DO NOT GLUE THEM TO THE FUSELAGE.

OPEN LANDING GEAR PODS, STEP 1

LANDING GEAR PEGS: FRAME 35

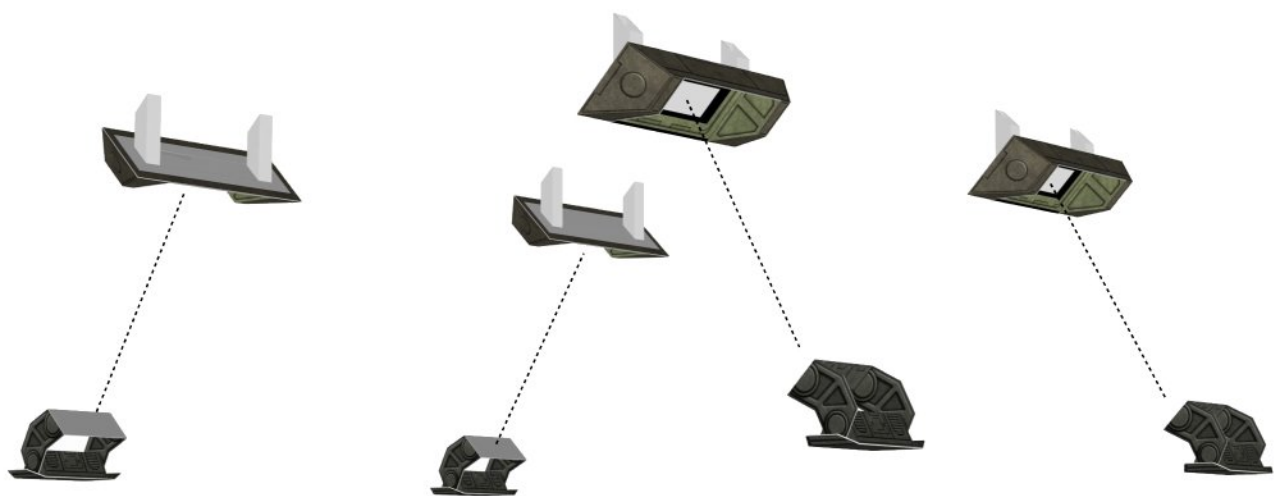


OPEN LANDING GEAR PODS, STEP 2



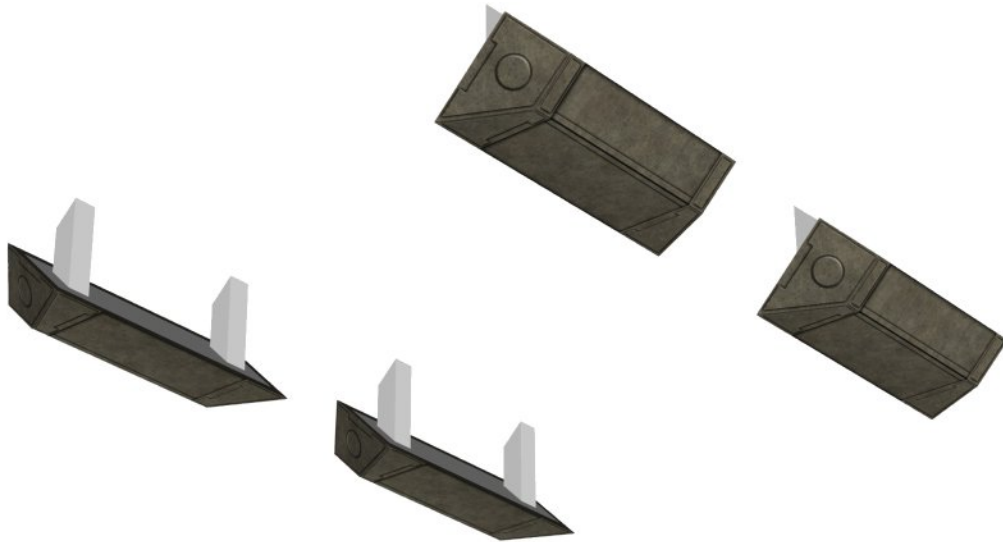
ALL PARTS ON THIS STEP ARE ON FRAME 32

OPEN LANDING GEAR PODS, STEP 3

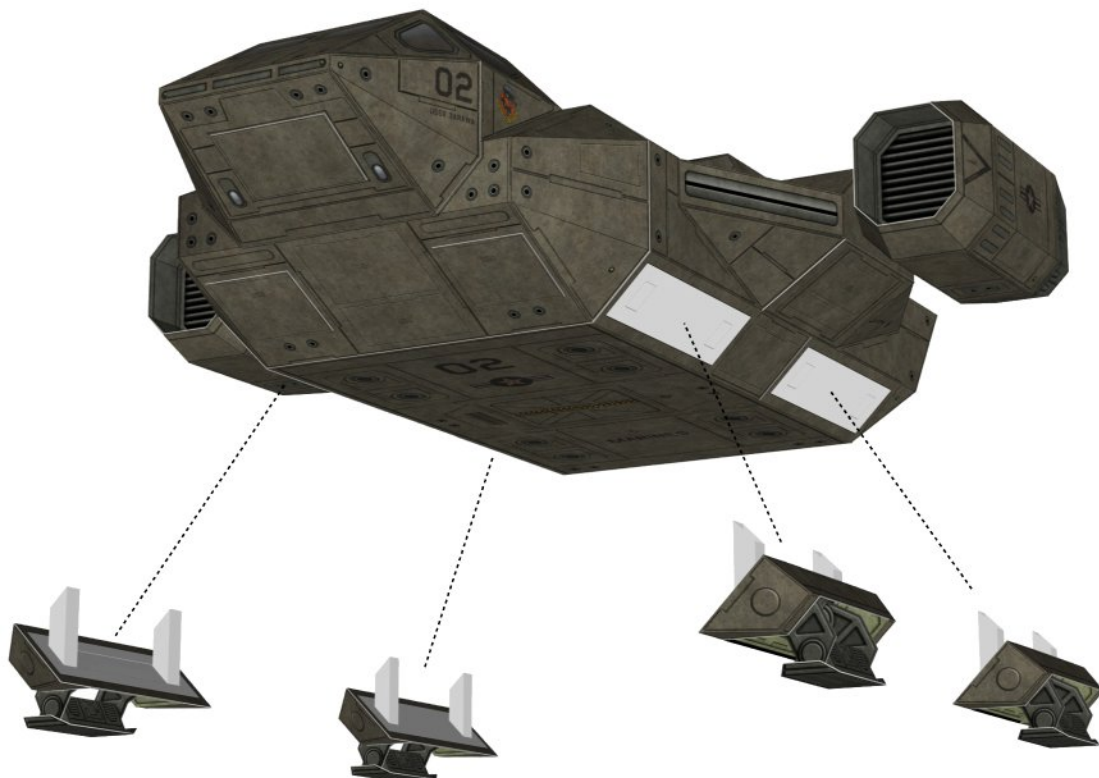


OPTIONAL CLOSED LANDING GEAR PODS

THE GEAR PEGS SLOT THROUGH PARTS 80, 83, 84, AND 87 IN THE SAME WAY AS THE OPEN GEAR PODS

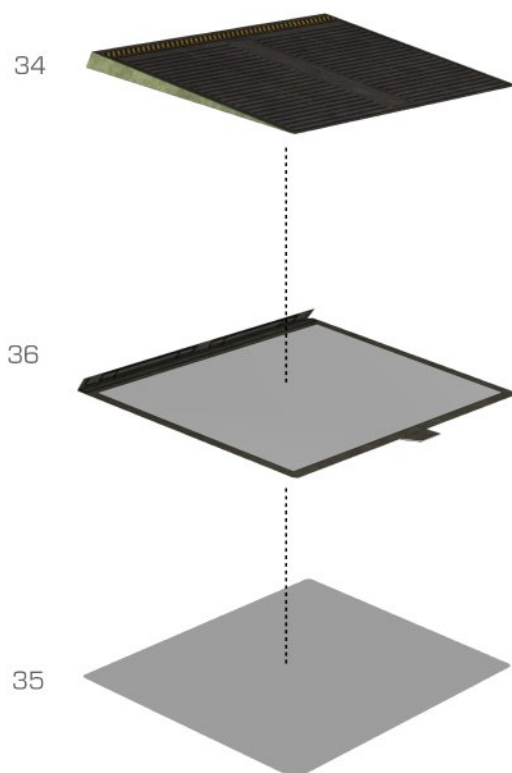


LANDING GEAR INSTALLATION

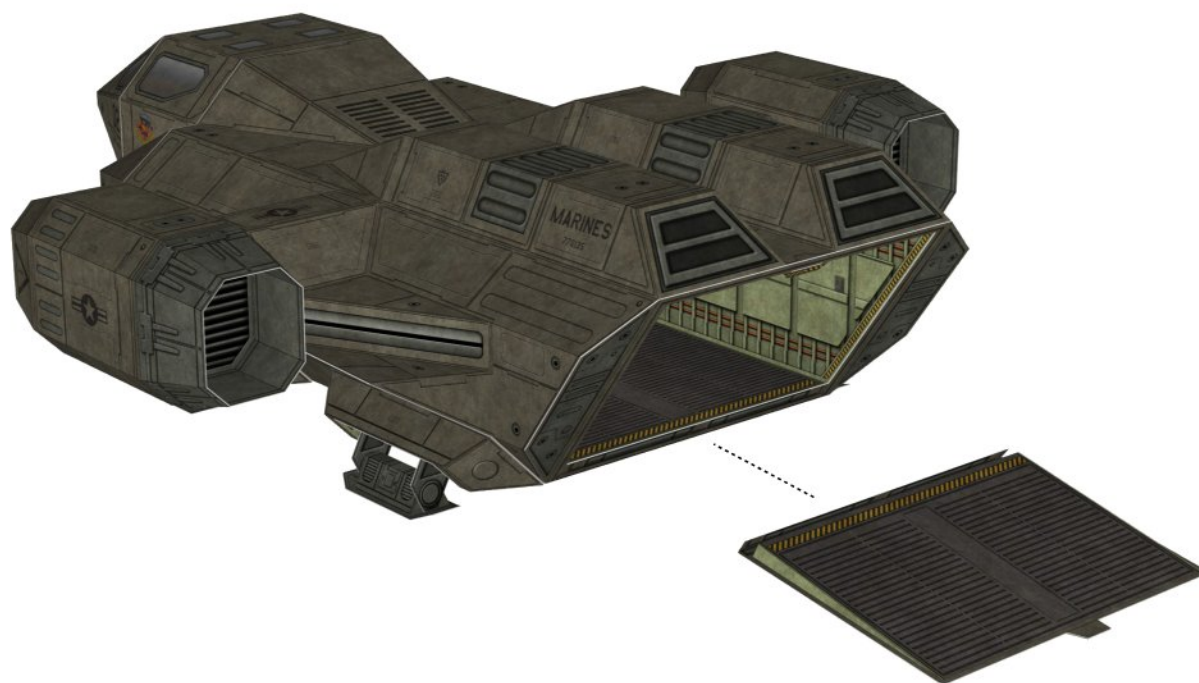


THE LANDING GEAR PODS, BOTH OPEN AND CLOSED, ARE DESIGNED TO BE REMOVABLE. DO NOT GLUE INTO PLACE.

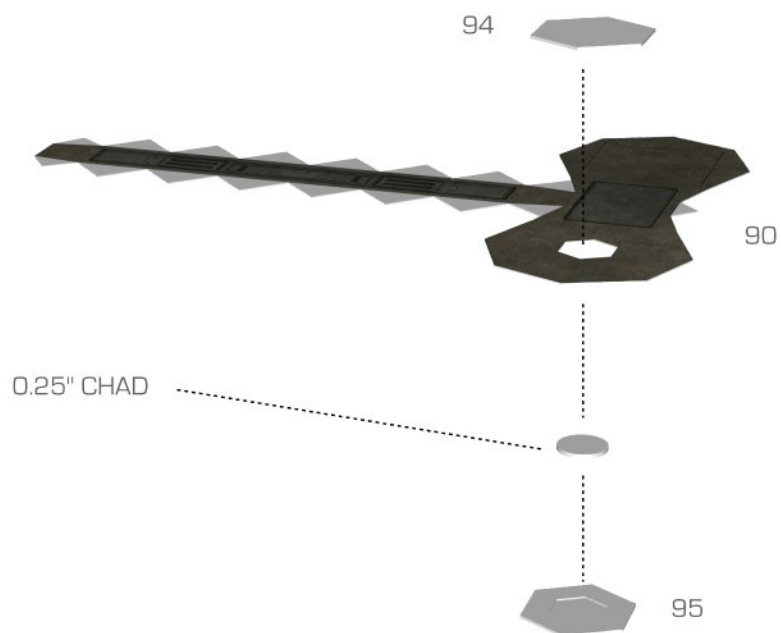
REAR RAMP, STEP 1



REAR RAMP, STEP 2

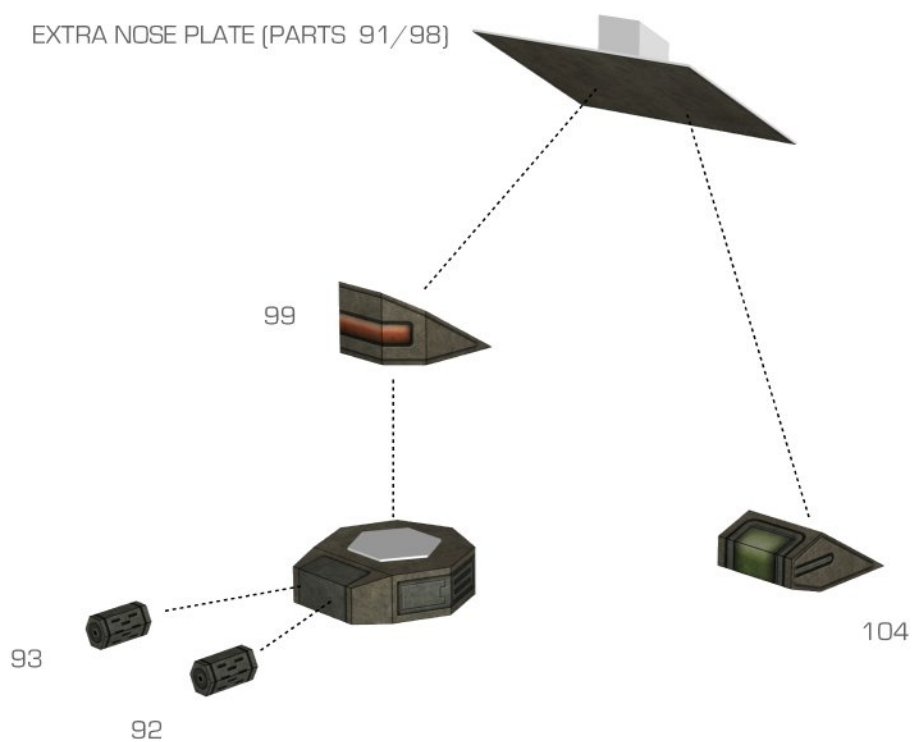


NOSE GUN TURRET AND FLIR POD, STEP 1



GLUE 3 LAYERS OF SCRAP CARDSTOCK TOGETHER, THEN PUNCH OUT A ROUND CHAD WITH A 1/4" HOLE PUNCH

NOSE GUN TURRET AND FLIR POD, STEP 2

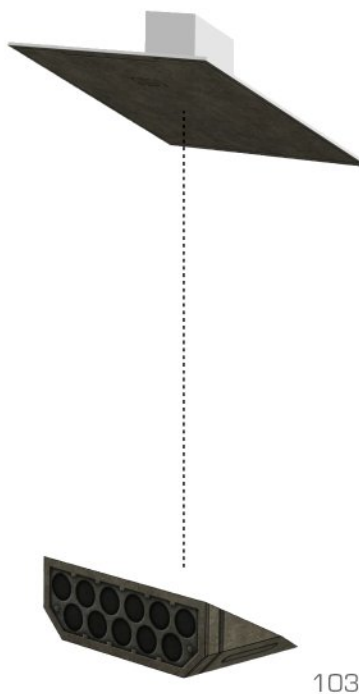


ROCKET PODS

EXTRA FRONT FUSELAGE PLATE (PARTS 97/101)

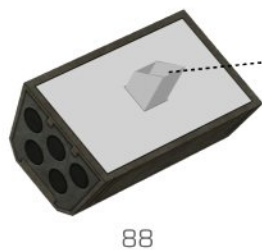


EXTRA FRONT FUSELAGE PLATE (PARTS 96/100)

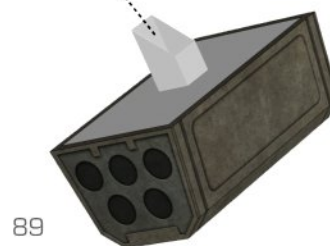


MISSILE PODS

SLOT PEGS (PARTS 105 AND 106) THROUGH HOLES ON PARTS 88 AND 89
BEFORE GLUING MISSILE PODS CLOSED



MISSILE PODS REPLACE PYLON OPTION PLATES



COMPLETED MODEL, FULL OPTIONS



COMPLETED MODEL

