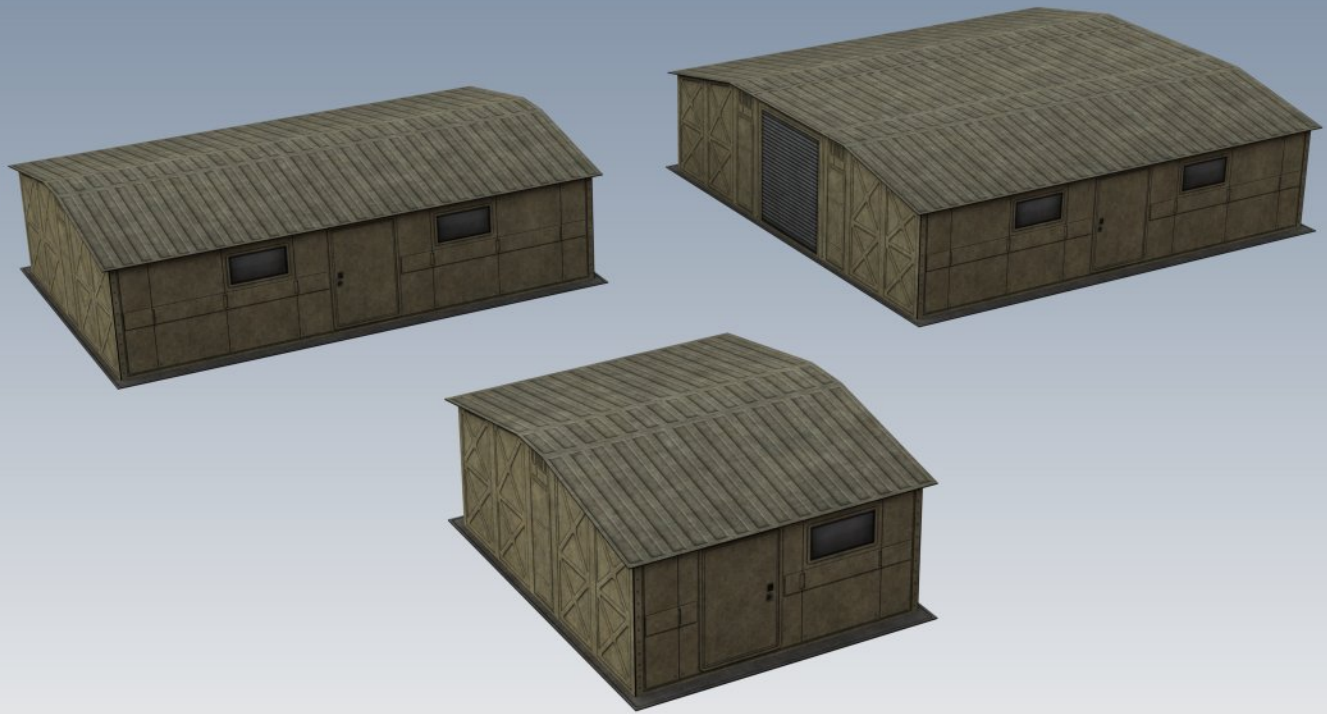


I:60 SCALE CARD MODEL



M3619 FOLDING UNIT STRUCTURES

Page Count: 18

Difficulty Level: Easy

Dimensions (S): 2" x 3.75" x 4.75" (58mm x 95mm x 120mm)

Dimensions (M): 2" x 4.75" x 7.25" (58mm x 120mm x 184mm)

Dimensions (L): 2" x 7.25" x 7.375" (58mm x 184mm x 187mm)

Compatible with 28mm sized miniatures



COLORS AND OPTIONS



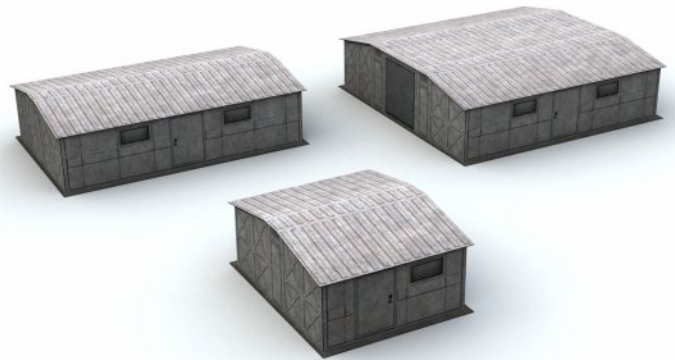
GREEN



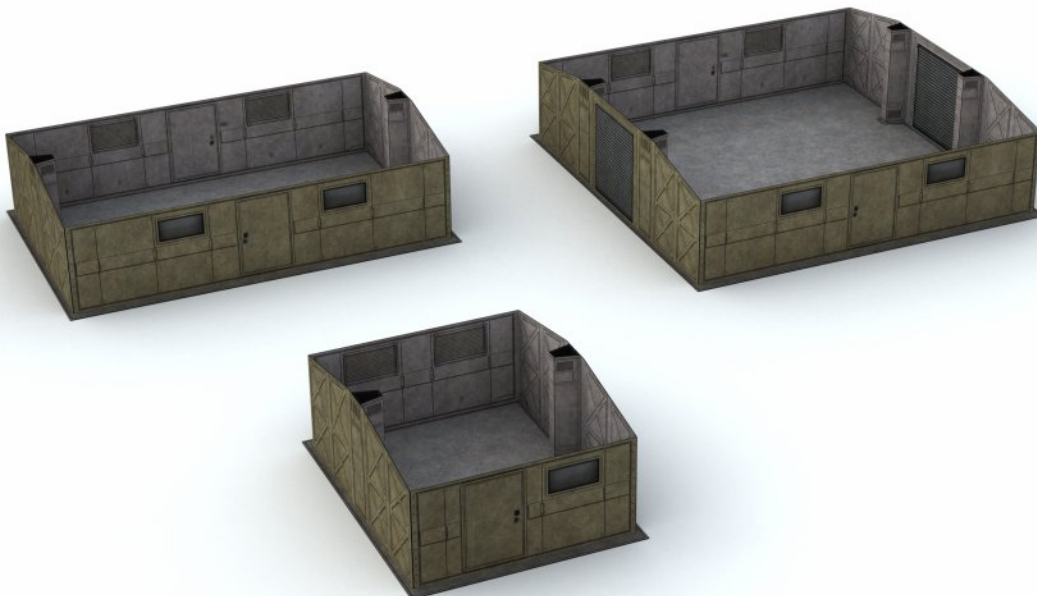
TAN



GRAY

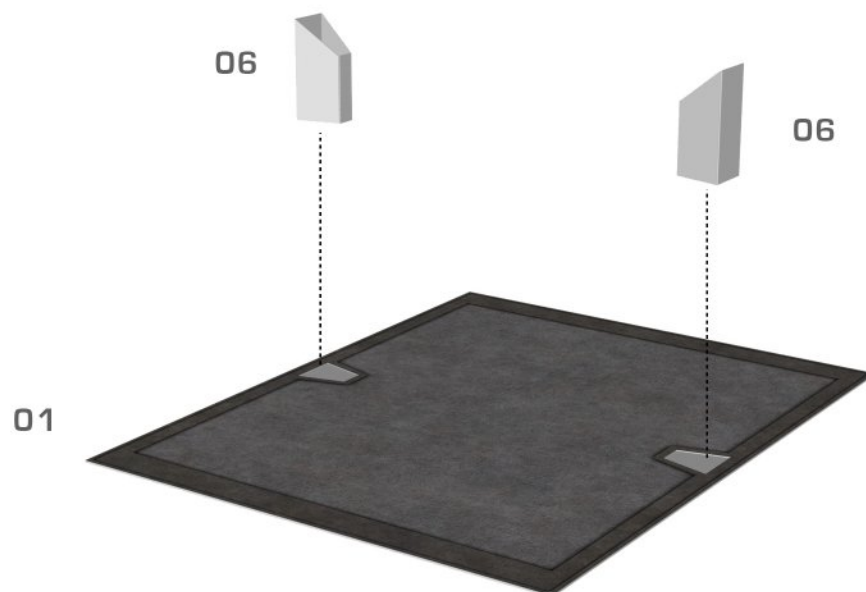


WHITE

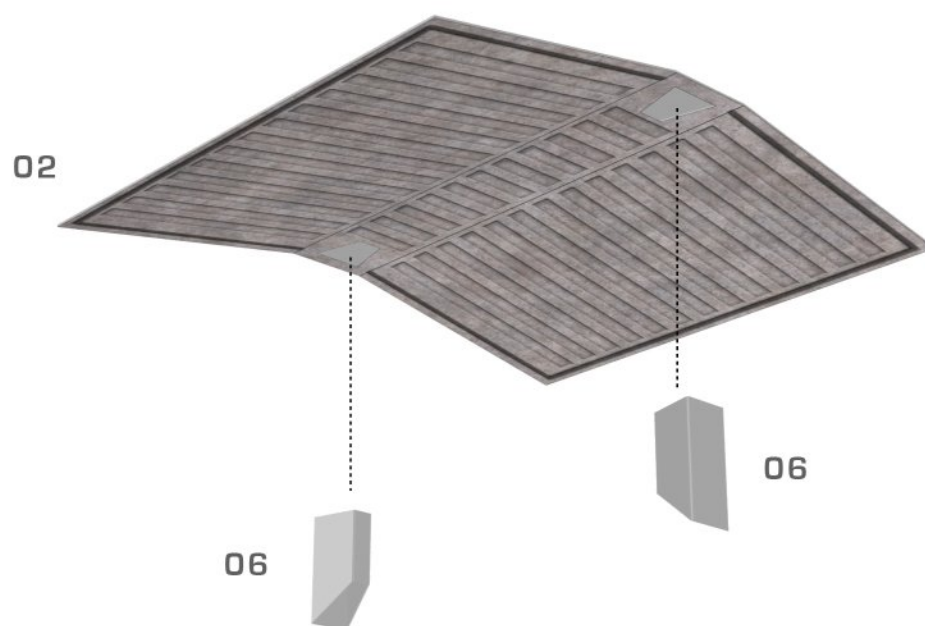


FUNCTIONAL INTERIORS

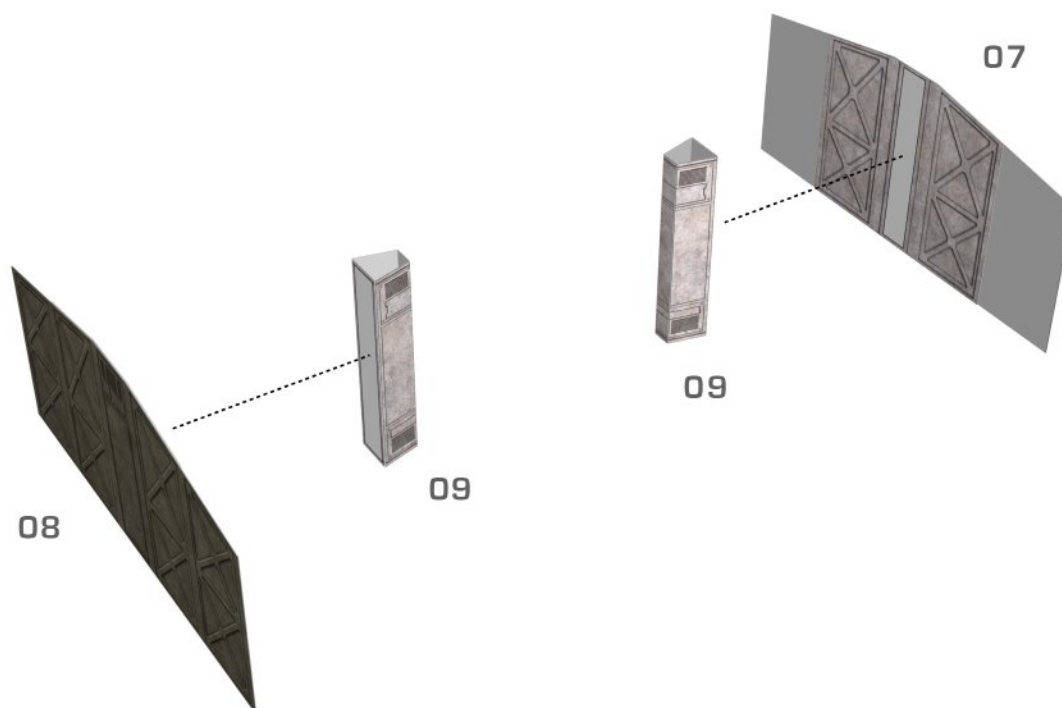
SMALL FUS FLOORPAD



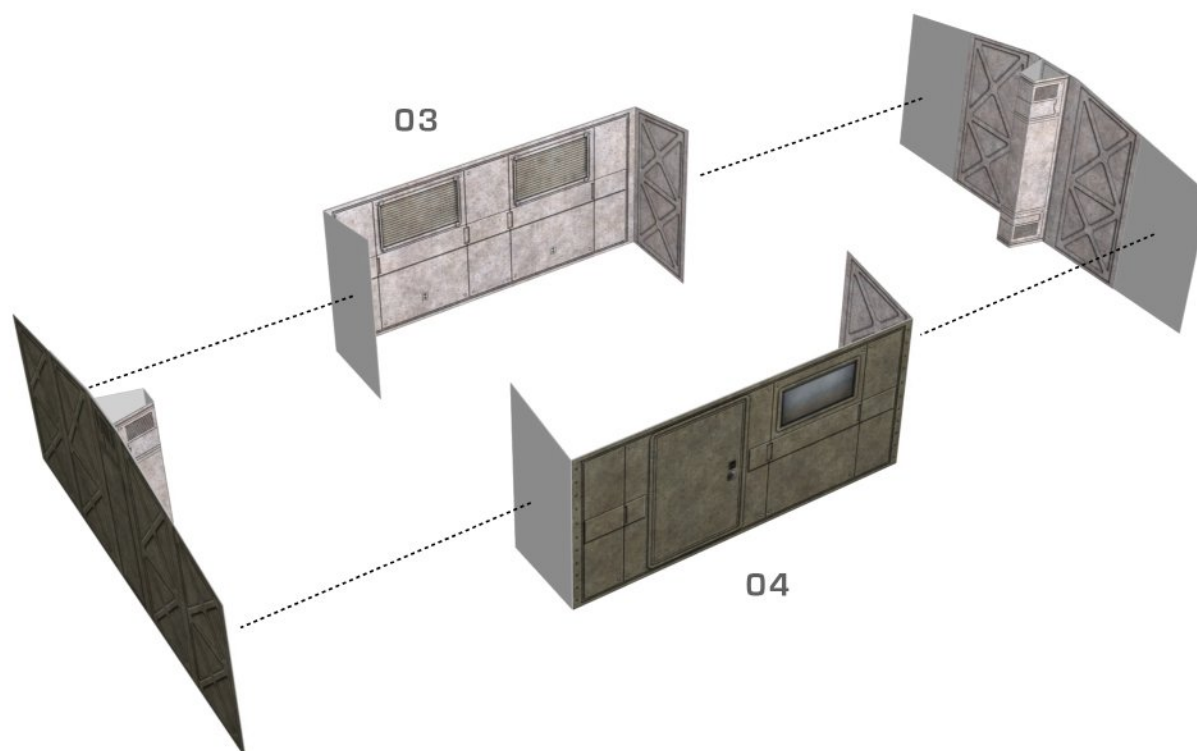
SMALL FUS ROOF



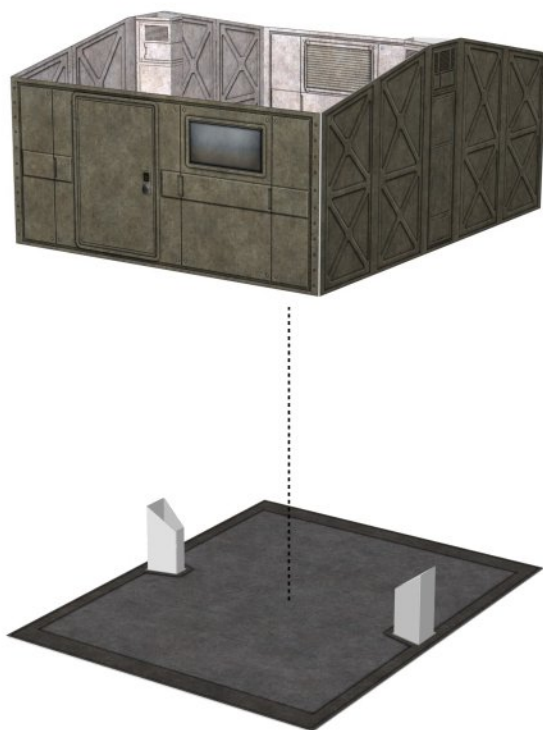
SMALL FUS WALLS, STEP 1



SMALL FUS WALLS, STEP 2

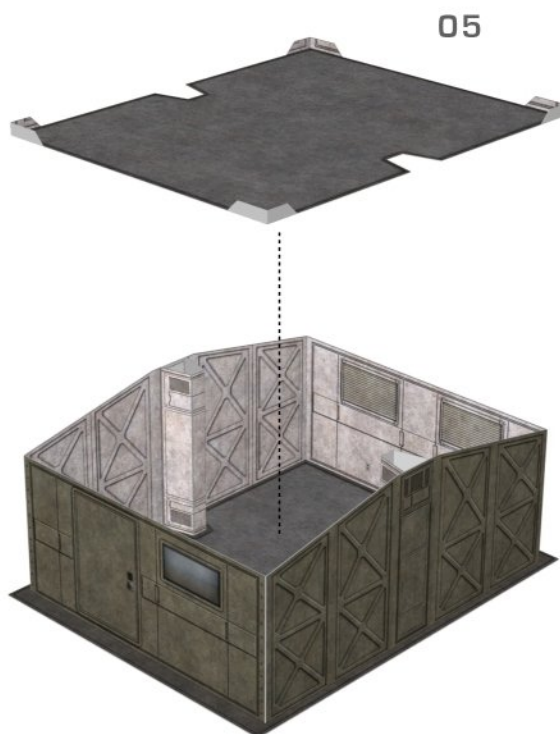


SMALL FUS FINAL ASSEMBLY, STEP 1



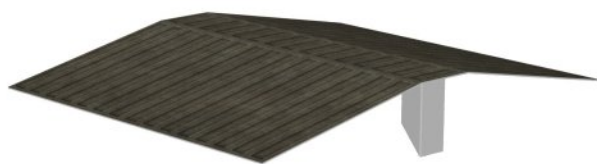
GLUING OPTIONAL

SMALL FUS FINAL ASSEMBLY, STEP 2



DO NOT GLUE

SMALL FUS FINAL ASSEMBLY, STEP 3



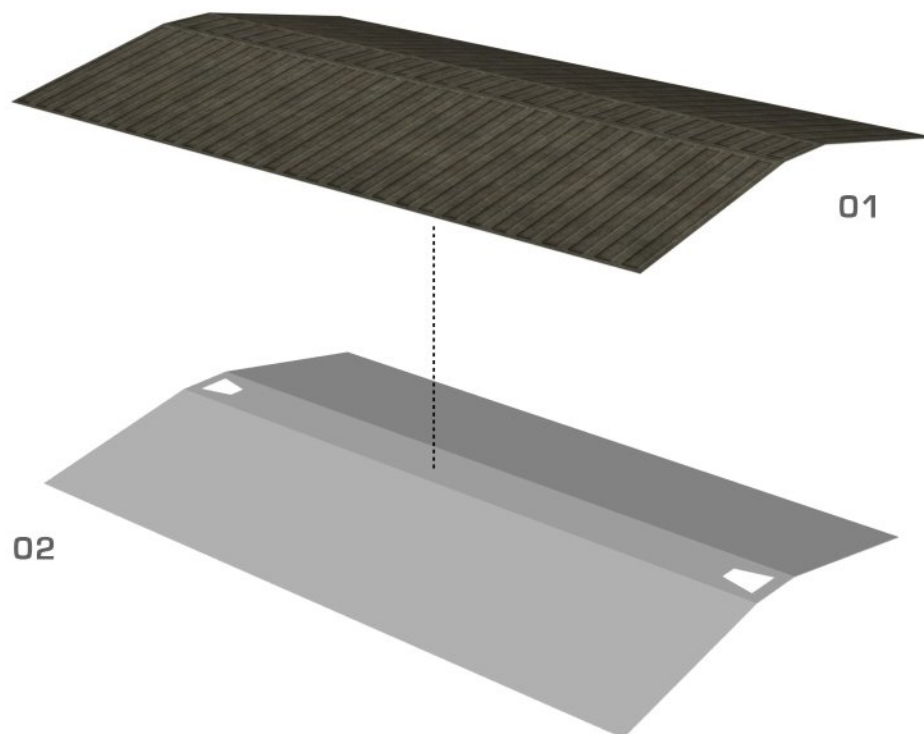
DO NOT GLUE



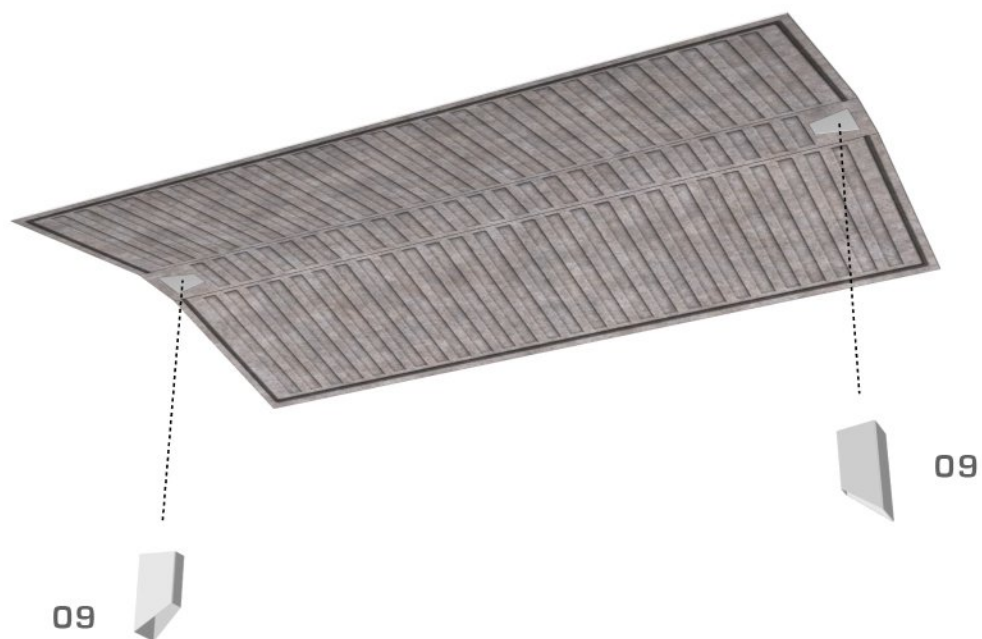
MODEL COMPLETED



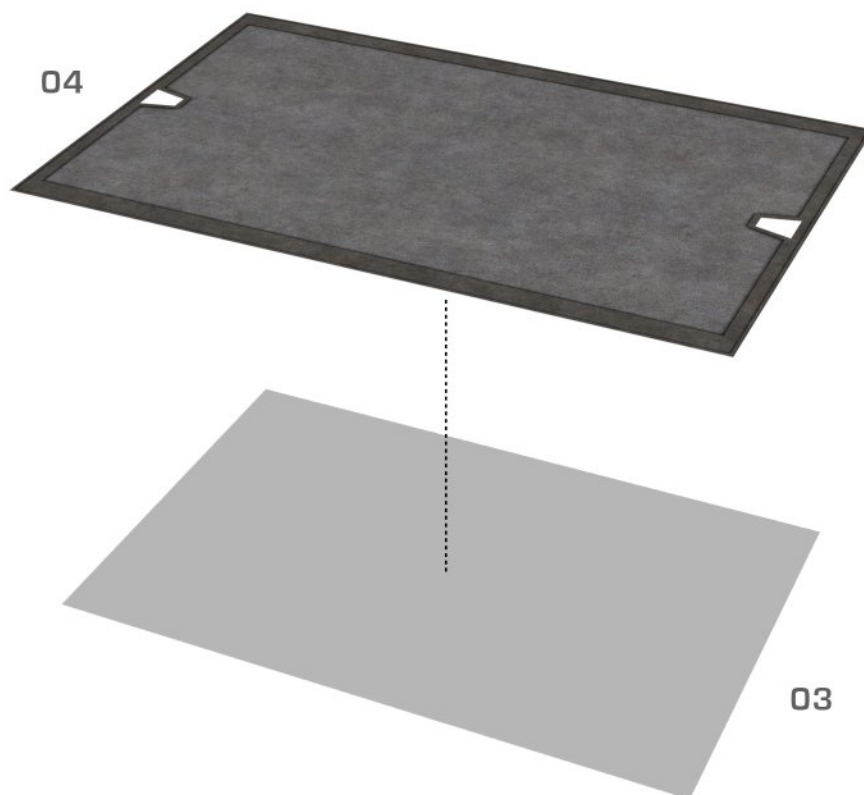
MEDIUM FUS ROOF, STEP 1



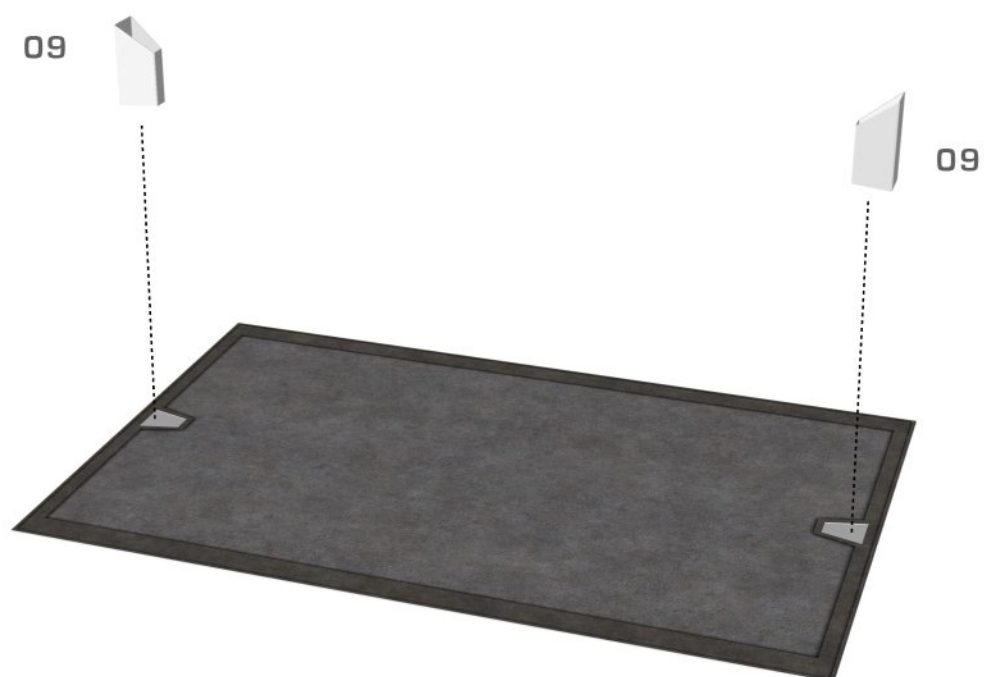
MEDIUM FUS ROOF, STEP 2



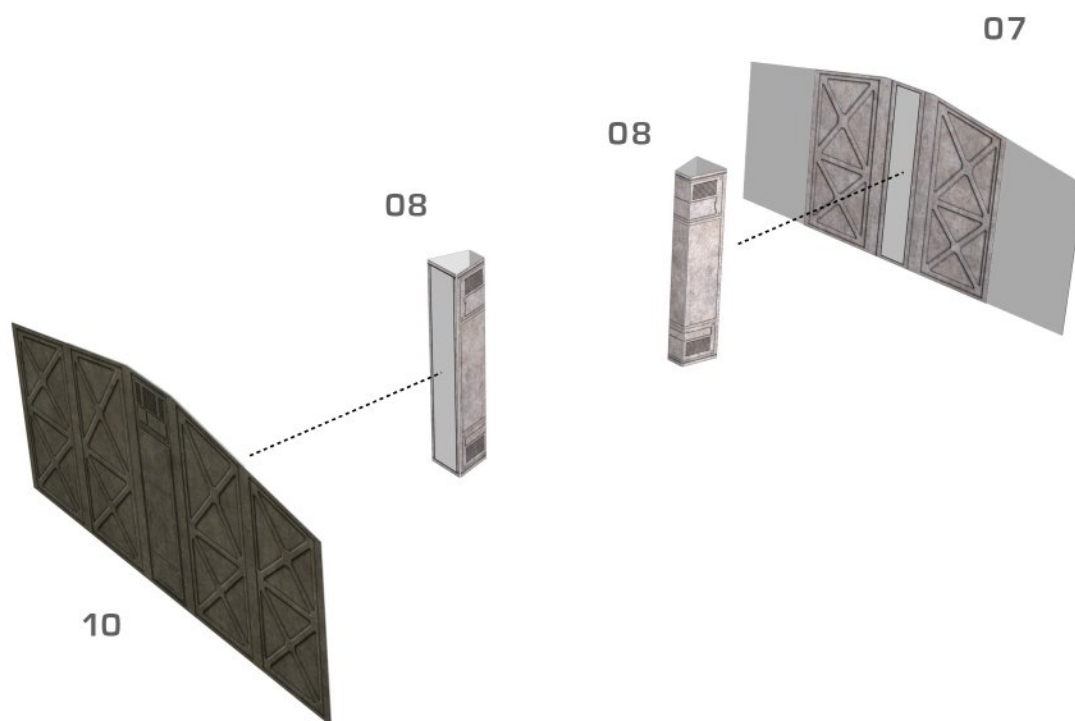
MEDIUM FUS FLOORPAD, STEP 1



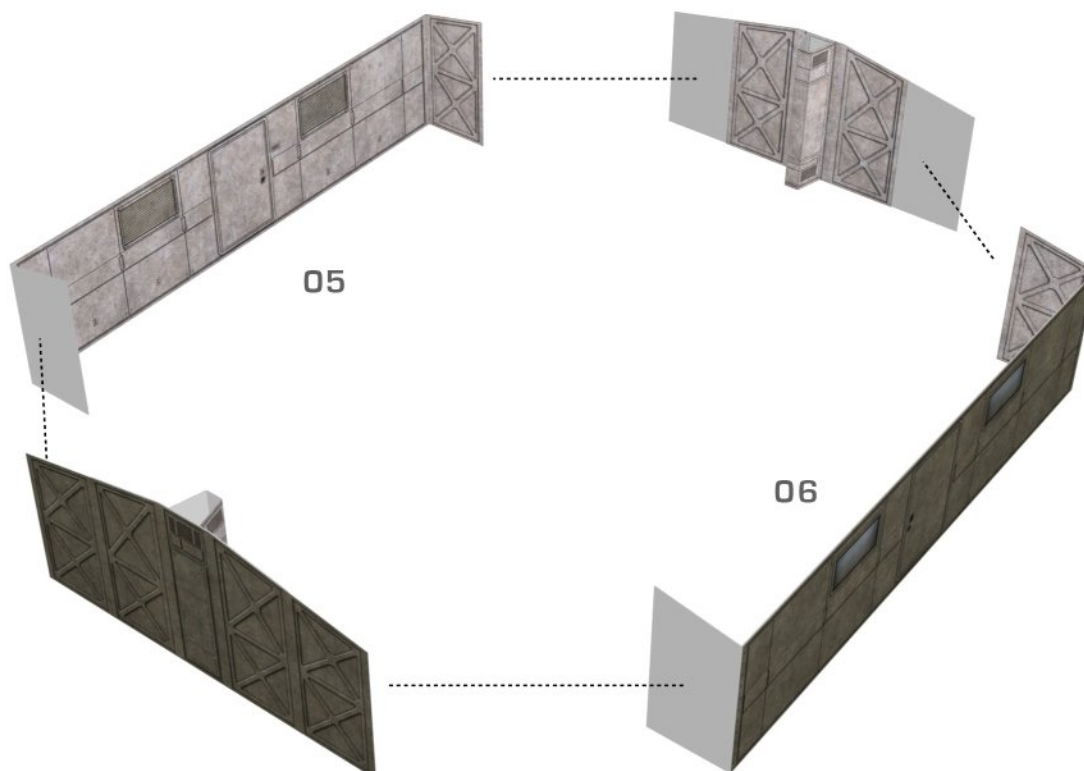
MEDIUM FUS FLOORPAD, STEP 2



MEDIUM FUS WALLS, STEP 1



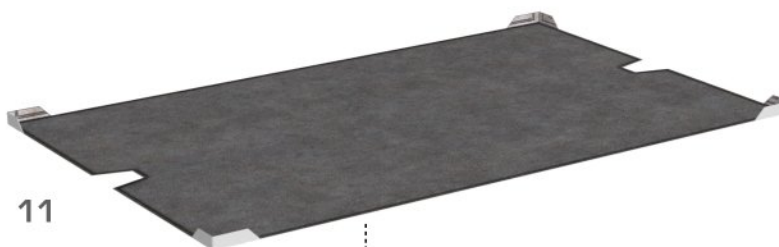
MEDIUM FUS WALLS, STEP 2



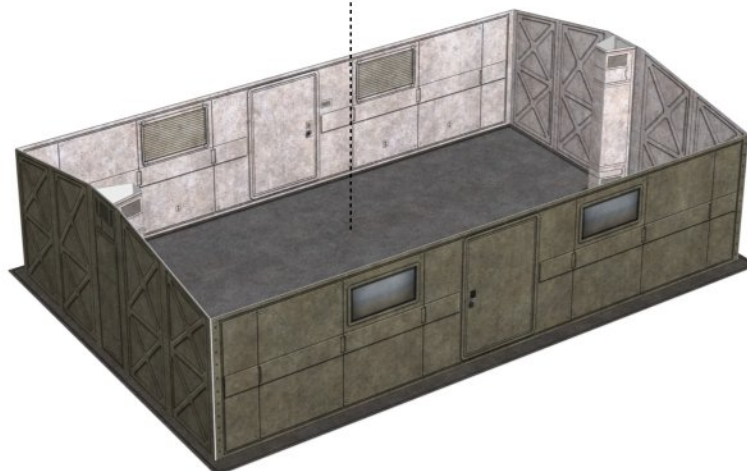
MEDIUM FUS FINAL ASSEMBLY, STEP 1



MEDIUM FUS FINAL ASSEMBLY, STEP 2

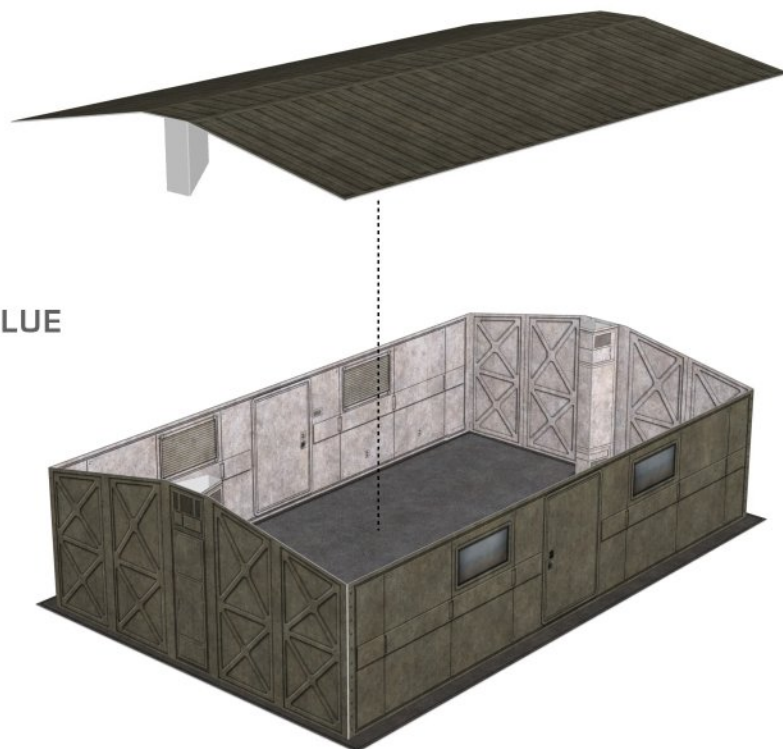


DO NOT GLUE



MEDIUM FUS FINAL ASSEMBLY, STEP 3

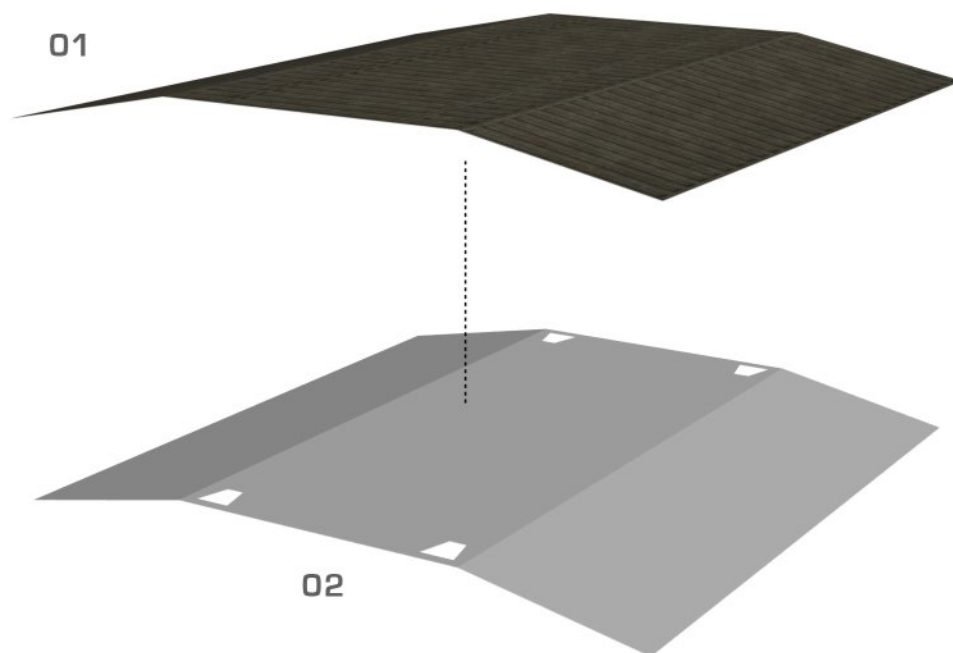
DO NOT GLUE



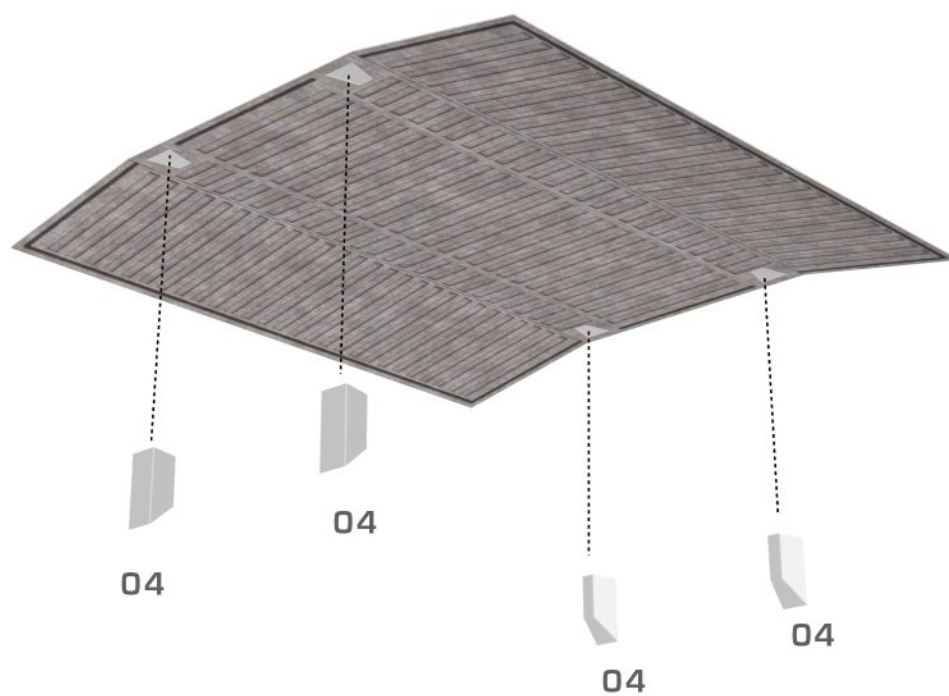
MODEL COMPLETED



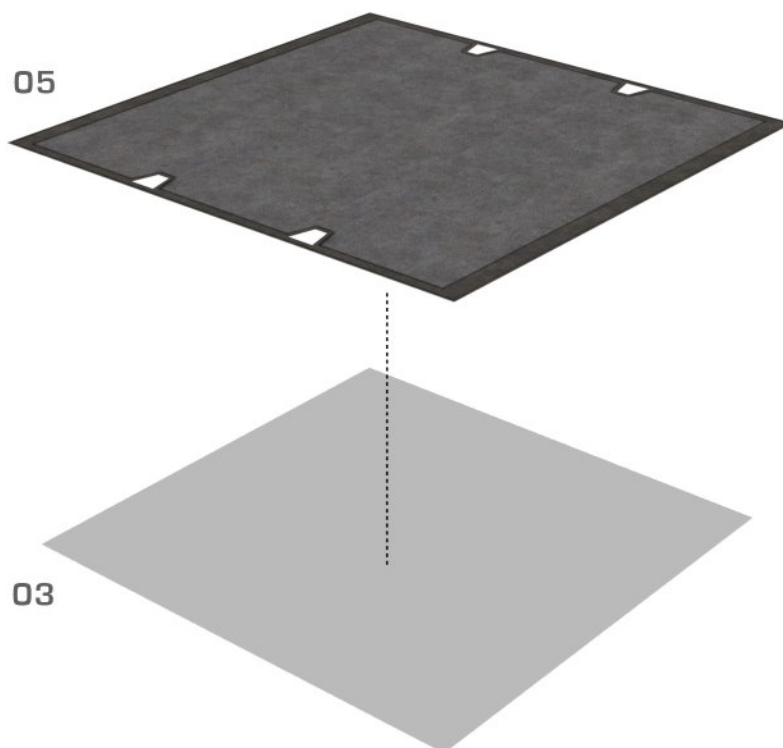
LARGE FUS ROOF, STEP 1



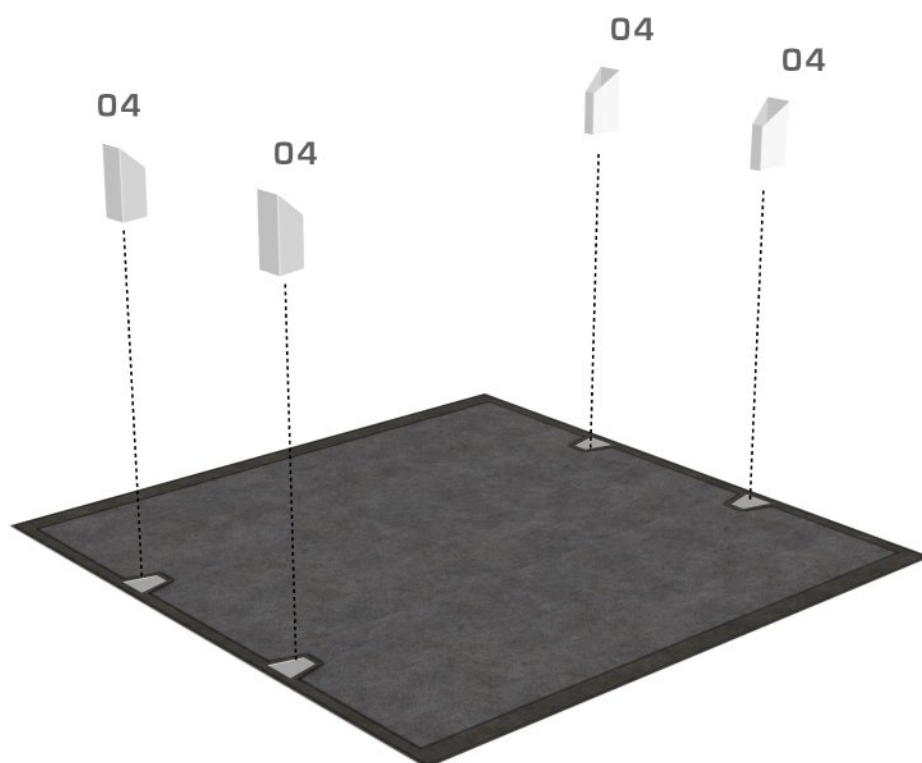
LARGE FUS ROOF, STEP 1



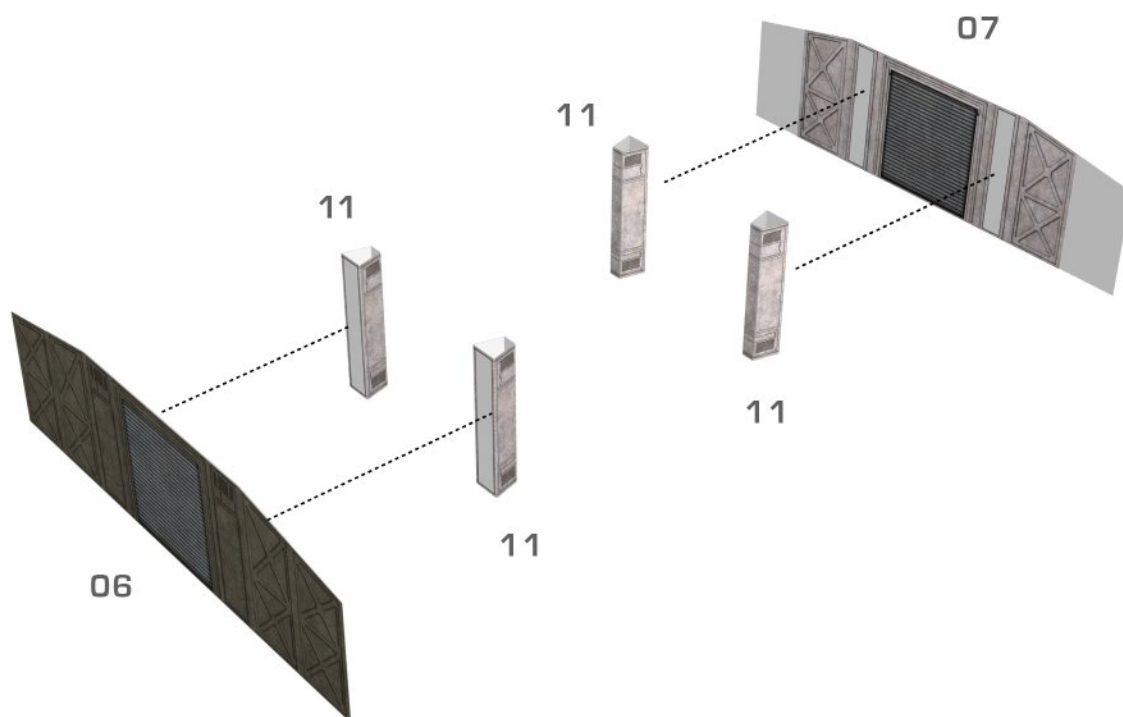
LARGE FUS FLOORPAD, STEP 1



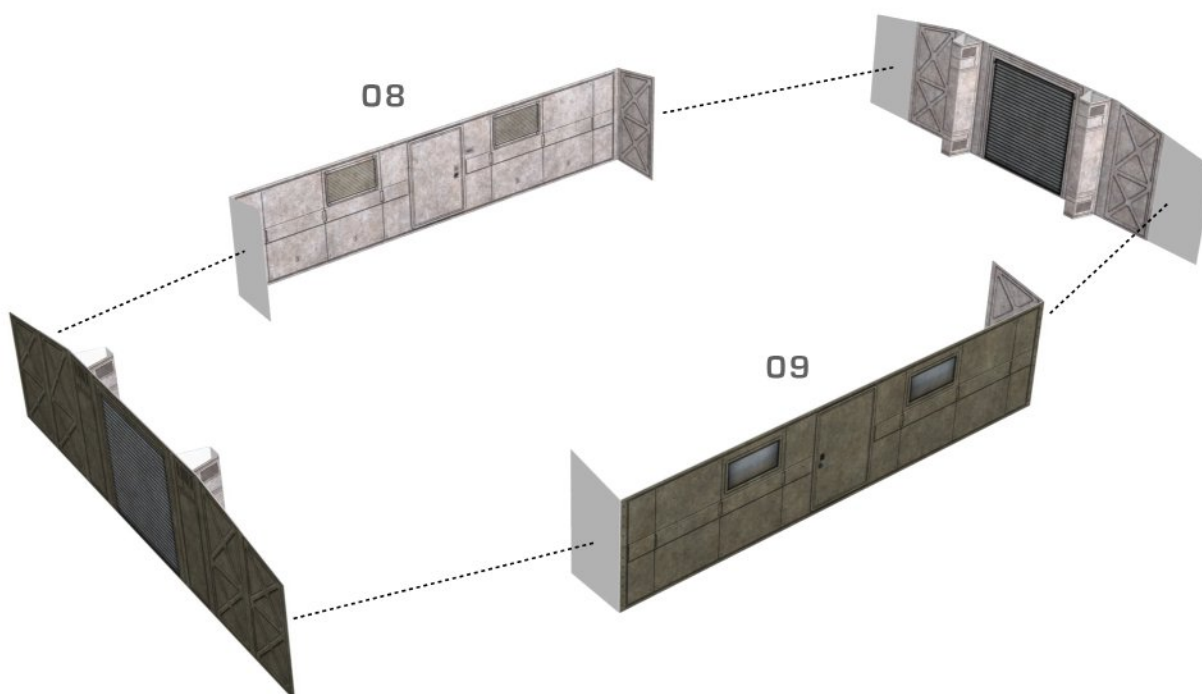
LARGE FUS FLOORPAD, STEP 2



LARGE FUS WALLS, STEP 1



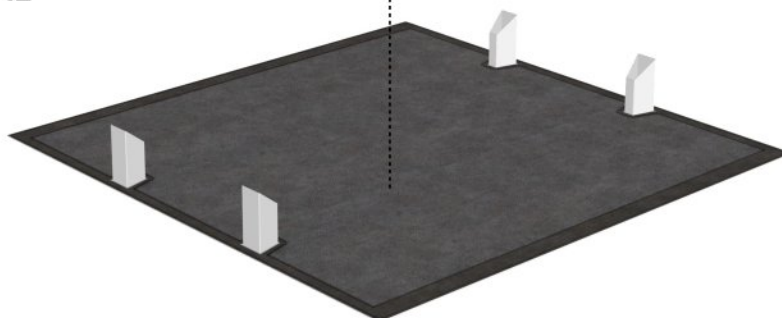
LARGE FUS WALLS, STEP 2



LARGE FUS FINAL ASSEMBLY, STEP 1



GLUING OPTIONAL

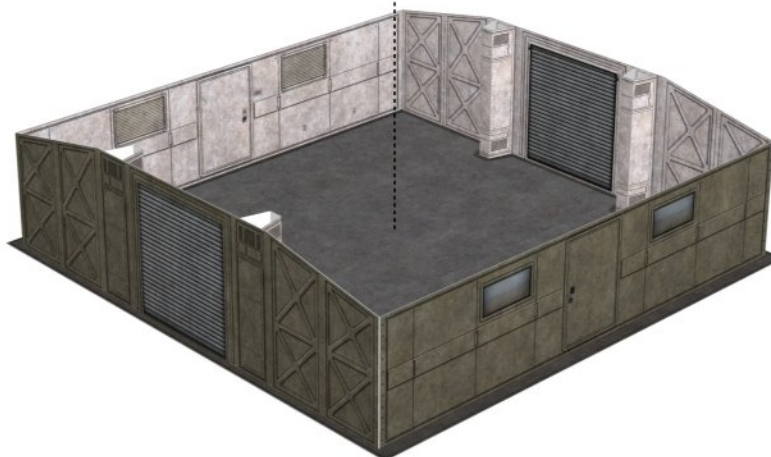


LARGE FUS FINAL ASSEMBLY, STEP 2

10

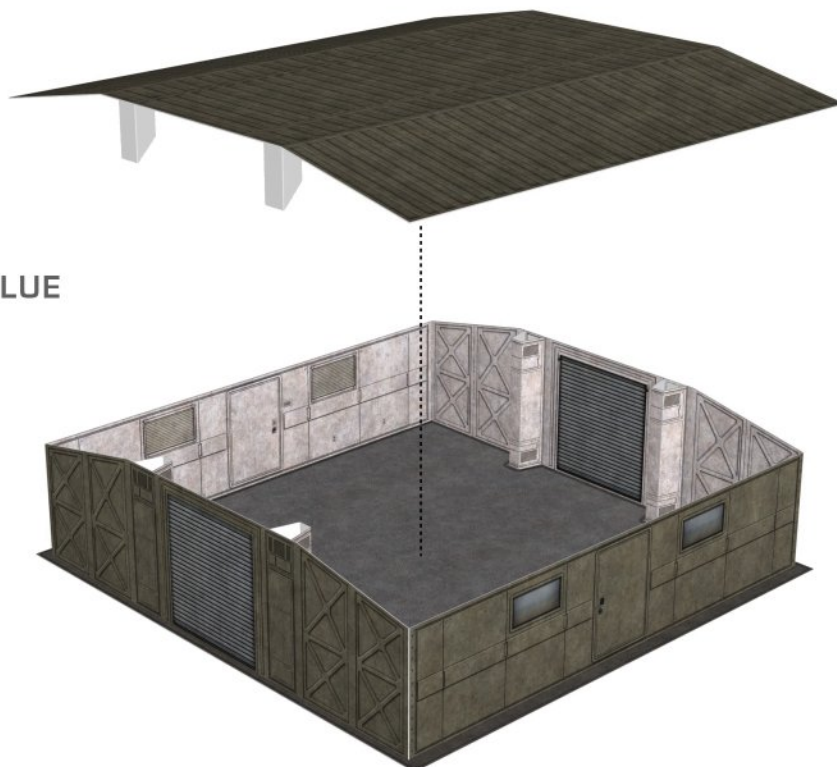


DO NOT GLUE



LARGE FUS FINAL ASSEMBLY, STEP 3

DO NOT GLUE

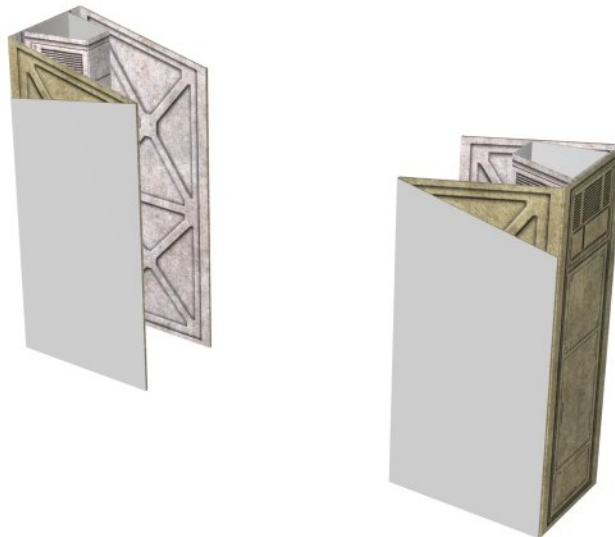


MODEL COMPLETED



BONUS: CONTAINERIZING A FUS, STEP 1

Score and fold the spine walls along their hinge lines, then glue together as shown below.



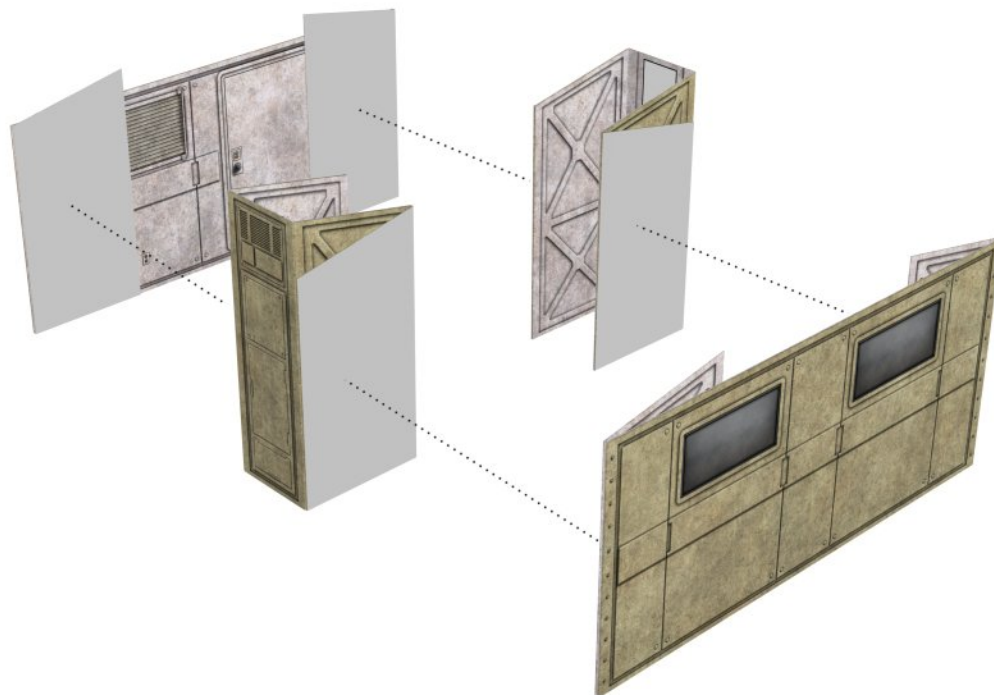
BONUS: CONTAINERIZING A FUS, STEP 2

Score and fold the side walls along their hinge lines, then glue together as shown below.



BONUS: CONTAINERIZING A FUS, STEP 3

Glue the collapsed spine and side walls together as shown below.



BONUS: CONTAINERIZING A FUS, STEP 4

Score and fold the floorpad and roof along their hinge lines, then assemble as normal.

Bend the roof and floorpad "wing" panels 90 degrees.

Attach the collapsed roof to the collapsed walls, then attach the collapsed floorpad.

Glue the floorpad "wings" over onto the roof pieces to complete the model.

The steps are identical for all 3 FUS types.



Optionally, you can cut apart and hinge all of the wall panels with clear tape. This allows you to freely transform the model between both its containerized and deployed states. The drop-in floor inserts will secure the walls in their open state.

