



## M3619-M FOLDING UNIT STRUCTURE

mountain fold

valley fold

cut area out

model designer  
CHRISTOPHER ROE

a genet models product

© 2013-2014 Christopher Roe. All rights reserved. Permission granted to reproduce for personal, non-commercial use only.

01





## M3619-M FOLDING UNIT STRUCTURE

mountain fold

valley fold

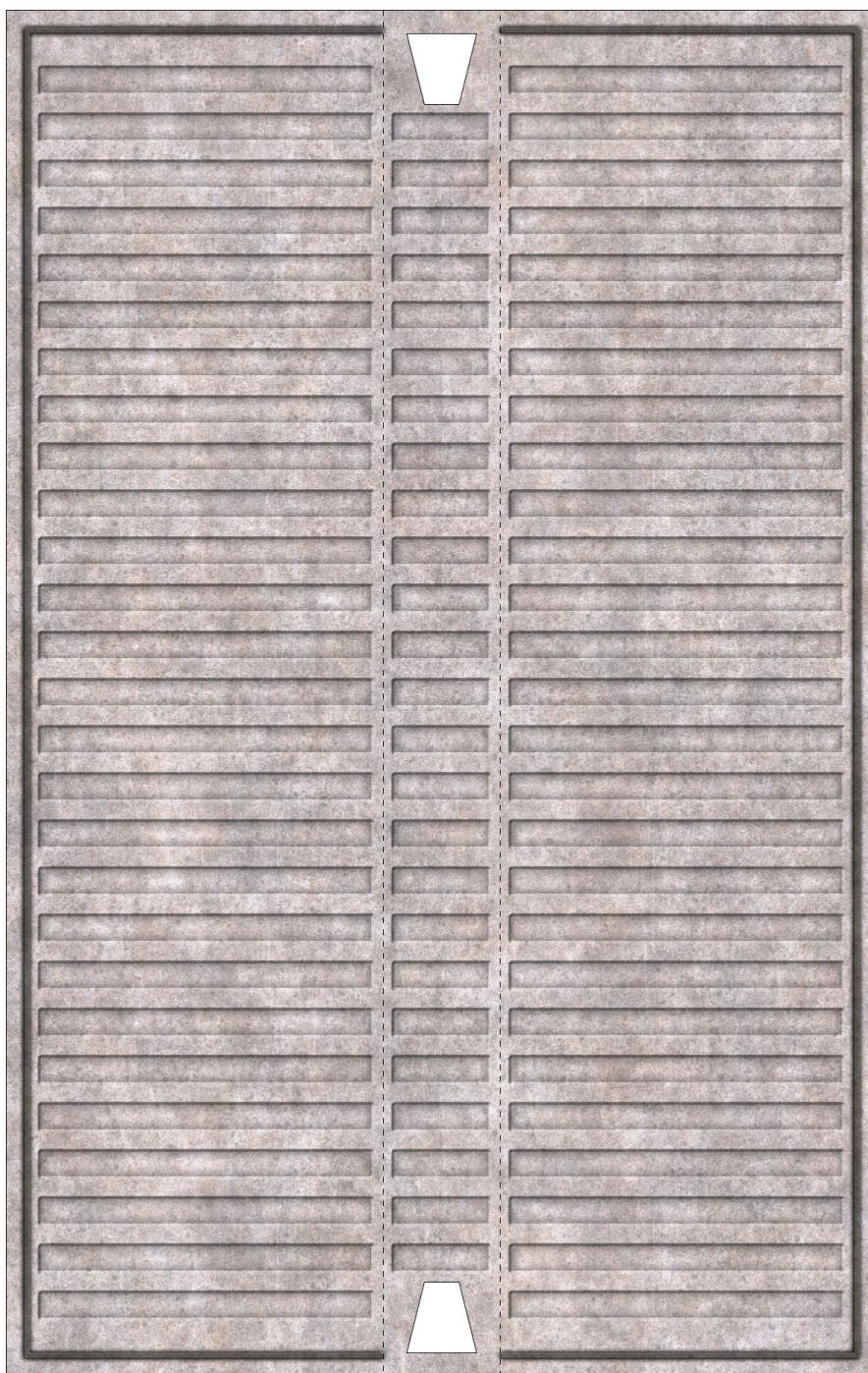
cut area out

model designer  
CHRISTOPHER ROE

a genet models product

© 2013-2014 Christopher Roe. All rights reserved. Permission granted to reproduce for personal, non-commercial use only.

02







## M3619-M FOLDING UNIT STRUCTURE

mountain fold

valley fold



model designer  
CHRISTOPHER ROE

a genet models product

© 2013-2014 Christopher Roe. All rights reserved. Permission granted to reproduce for personal, non-commercial use only.

03







## M3619-M FOLDING UNIT STRUCTURE

mountain fold

valley fold

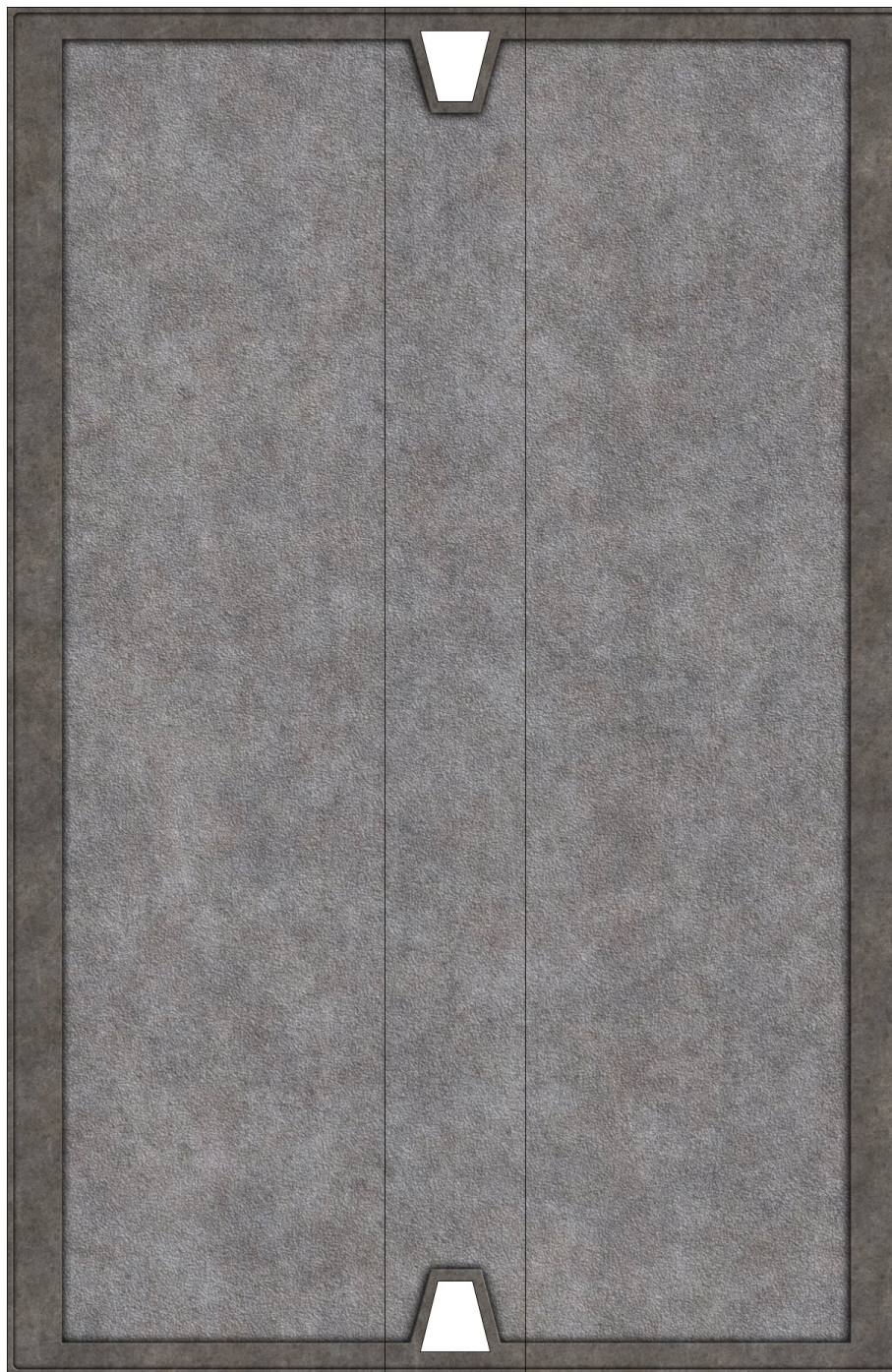


model designer  
**CHRISTOPHER ROE**

a genet models product

© 2013-2014 Christopher Roe. All rights reserved. Permission granted to reproduce for personal, non-commercial use only.

04







# M3619-M FOLDING UNIT STRUCTURE

mountain fold

valley fold

cut area out

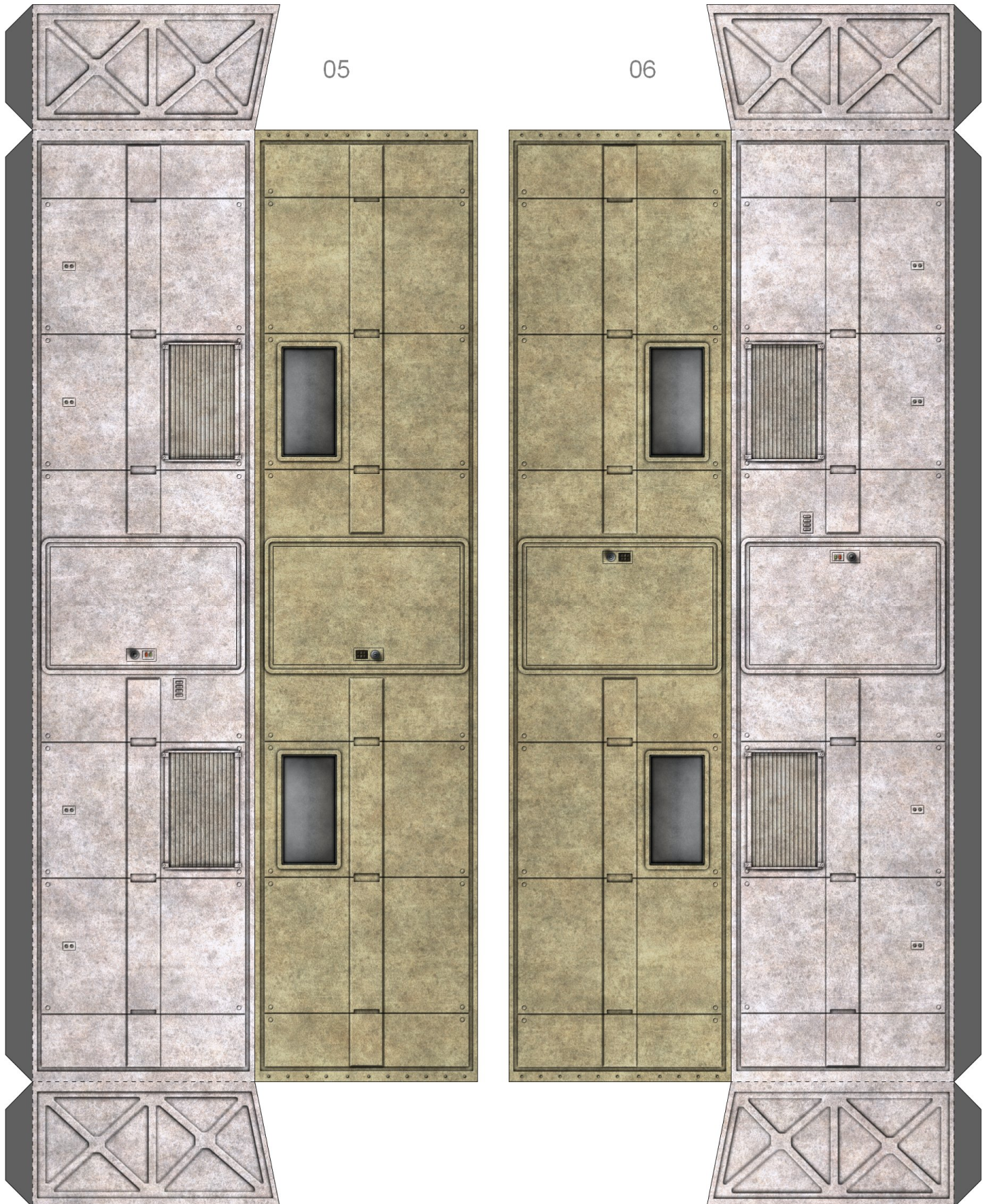
model designer  
CHRISTOPHER ROE

a genet models product

© 2013-2014 Christopher Roe. All rights reserved. Permission granted to reproduce for personal, non-commercial use only.

05

06







# M3619-M FOLDING UNIT STRUCTURE

mountain fold

valley fold

cut area out

model designer  
CHRISTOPHER ROE

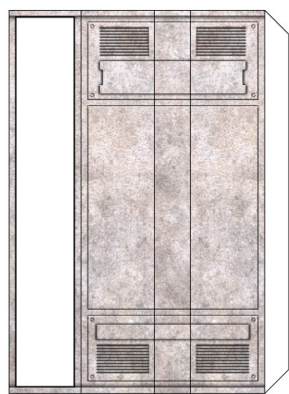
a genet models product

© 2013-2014 Christopher Roe. All rights reserved. Permission granted to reproduce for personal, non-commercial use only.

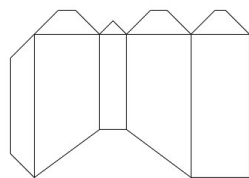
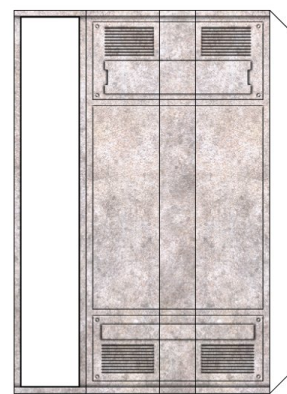
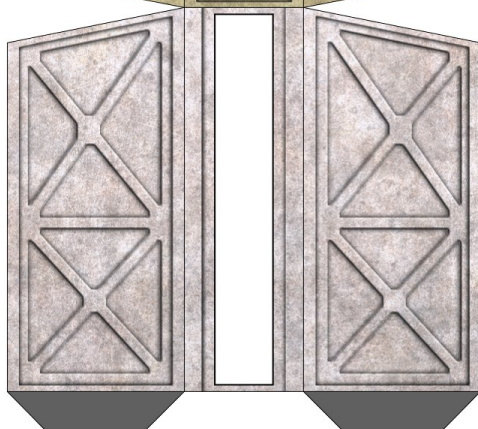
07



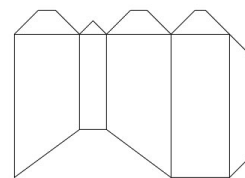
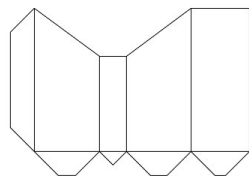
08



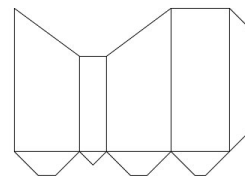
08



09



09



10







## M3619-M FOLDING UNIT STRUCTURE

mountain fold

valley fold



cut area out

model designer  
CHRISTOPHER ROE

a genet models product

© 2013-2014 Christopher Roe. All rights reserved. Permission granted to reproduce for personal, non-commercial use only.

11

