

# 1:60 SCALE CARD MODEL



## VT-3 PINZGAUER HEAVY SHUTTLE

Page Count: 42

Difficulty Level: Intermediate

Dimensions: 6.25" x 7.5" x 17.5" (158mm x 190mm x 444mm)

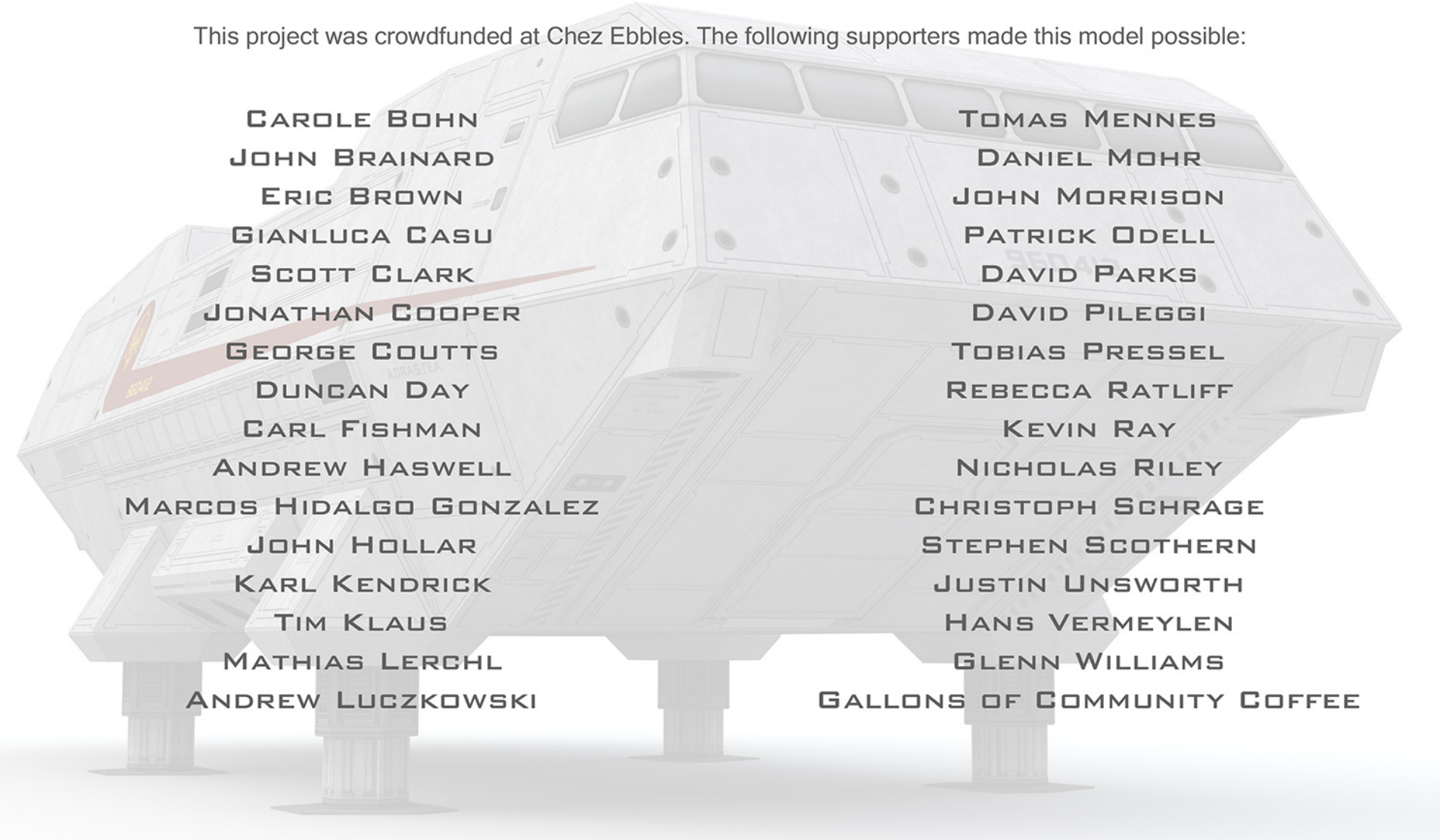
Compatible with 28mm sized miniatures





# PROJECT CREDITS

This project was crowdfunded at Chez Ebbles. The following supporters made this model possible:

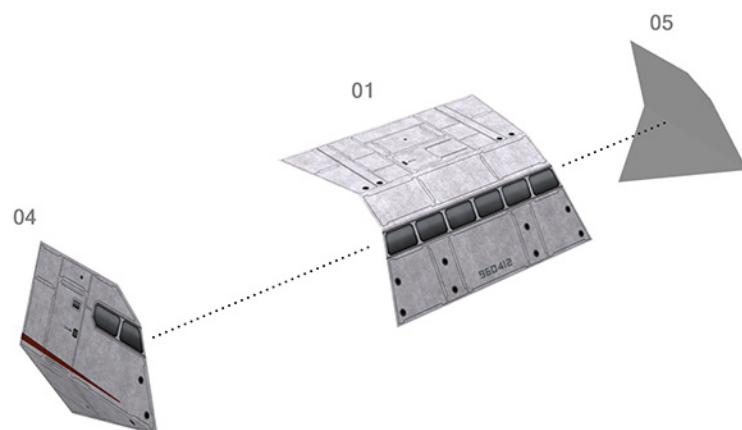


CAROLE BOHN  
JOHN BRAINARD  
ERIC BROWN  
GIANLUCA CASU  
SCOTT CLARK  
JONATHAN COOPER  
GEORGE COUTTS  
DUNCAN DAY  
CARL FISHMAN  
ANDREW HASWELL  
MARCOS HIDALGO GONZALEZ  
JOHN HOLLAR  
KARL KENDRICK  
TIM KLAUS  
MATHIAS LERCHL  
ANDREW LUCZKOWSKI

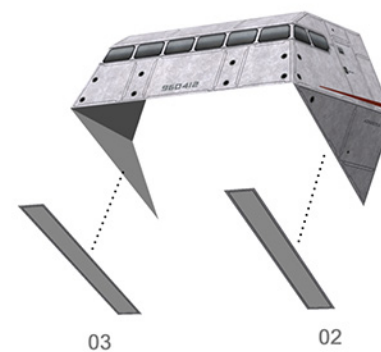
TOMAS MENNES  
DANIEL MOHR  
JOHN MORRISON  
PATRICK ODELL  
DAVID PARKS  
DAVID PILEGGI  
TOBIAS PRESSEL  
REBECCA RATLIFF  
KEVIN RAY  
NICHOLAS RILEY  
CHRISTOPH SCHRAGE  
STEPHEN SCOTHERN  
JUSTIN UNSWORTH  
HANS VERMEYLEN  
GLENN WILLIAMS  
GALLONS OF COMMUNITY COFFEE

## THANK YOU FOR YOUR SUPPORT!

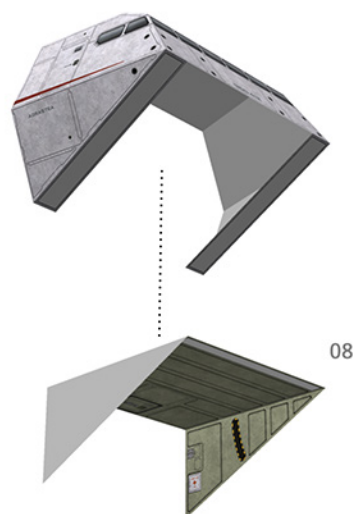
### NOSE, STEP 1



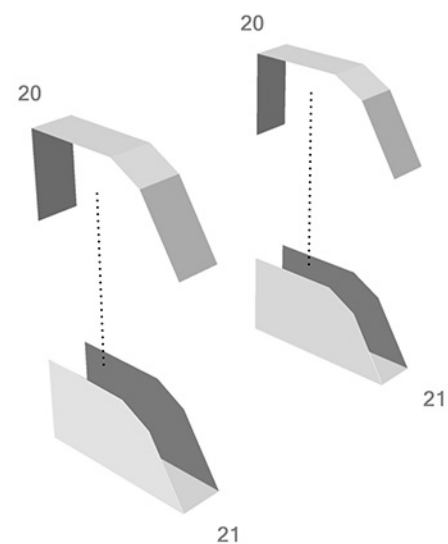
### NOSE, STEP 2



### NOSE, STEP 3

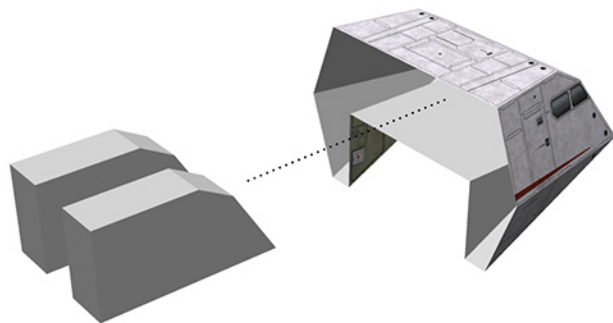


### NOSE, STEP 4





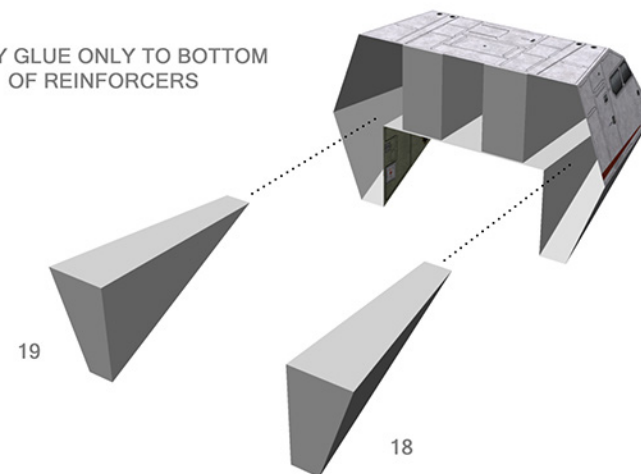
## NOSE, STEP 5



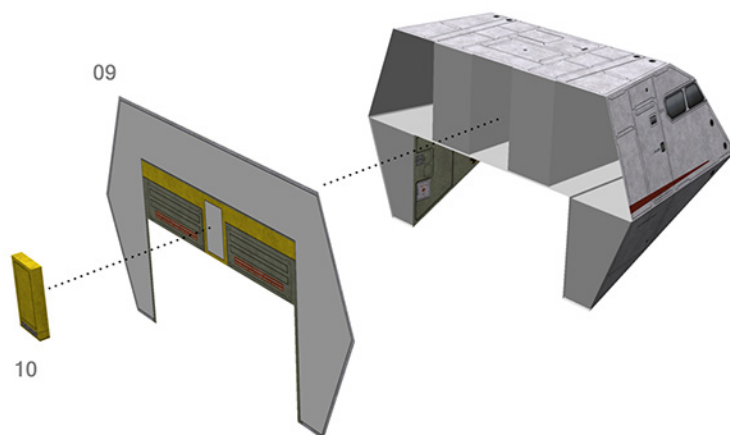
APPLY GLUE ONLY TO BOTTOM OF REINFORCERS

## NOSE, STEP 6

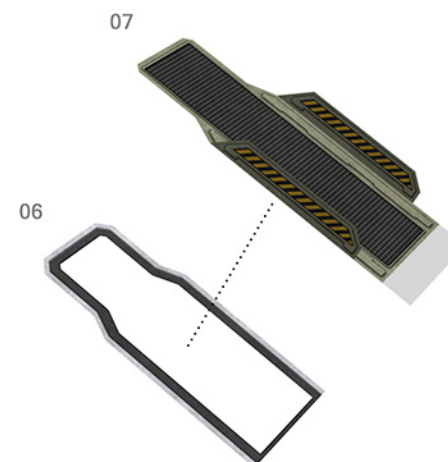
APPLY GLUE ONLY TO BOTTOM OF REINFORCERS



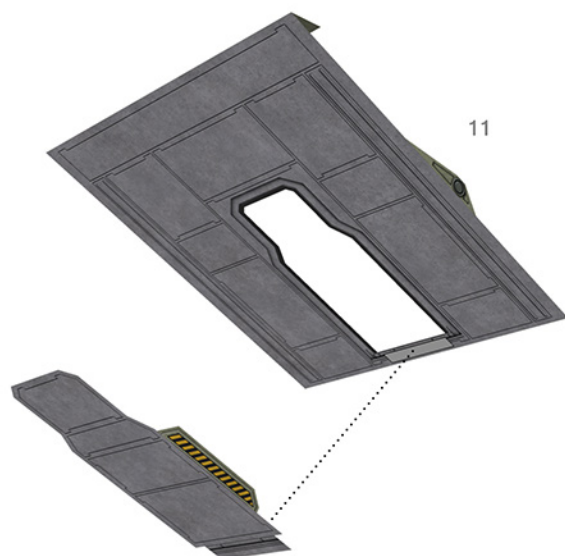
## NOSE, STEP 7



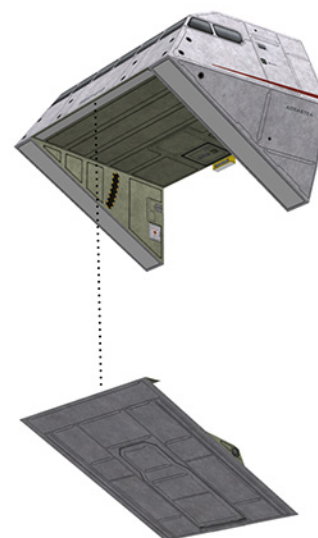
## NOSE, STEP 8



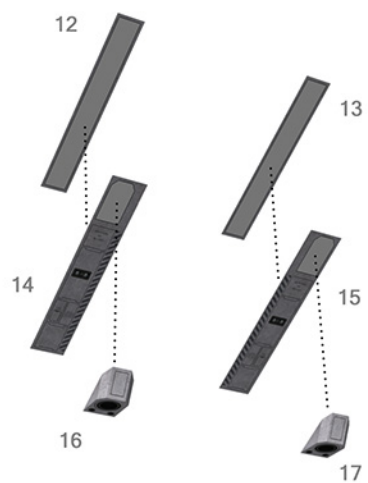
NOSE, STEP 9



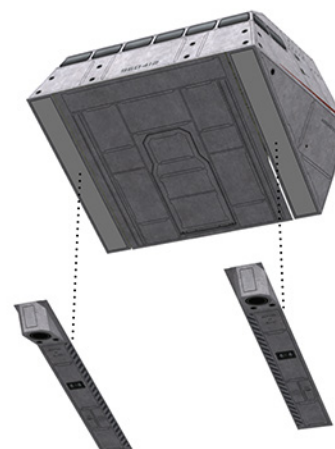
NOSE, STEP 10



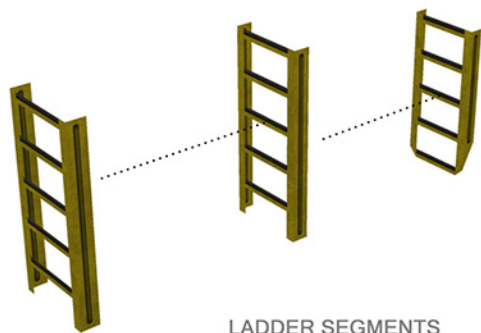
NOSE, STEP 11



NOSE, STEP 12



### RETRACTED LADDER, STEP 1



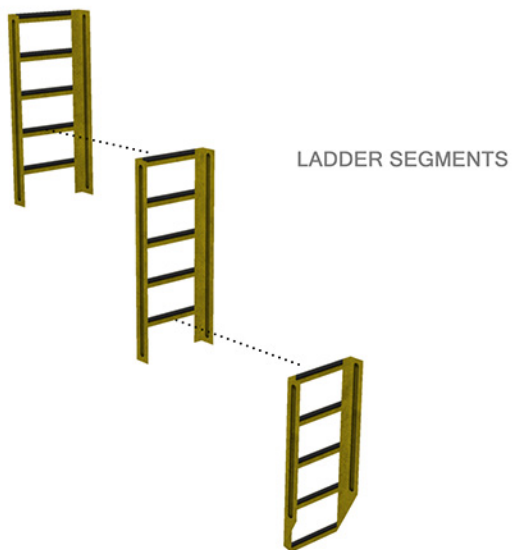
LADDER SEGMENTS

### RETRACTED LADDER, STEP 2



COMPLETED LADDER  
(RETRACTED)

### EXTENDED LADDER, STEP 1



LADDER SEGMENTS

### EXTENDED LADDER, STEP 2

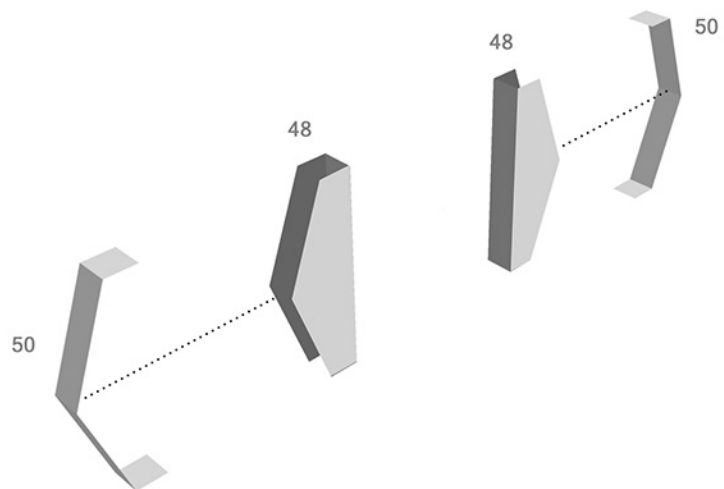
COMPLETED LADDER  
(EXTENDED)



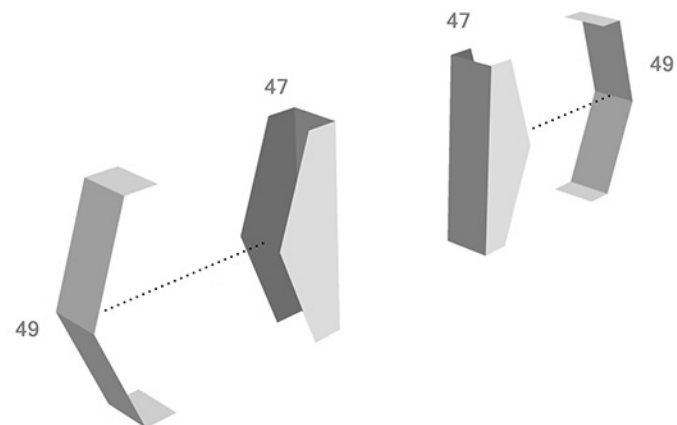
NOTE: BOTH LADDERS ARE DESIGNED TO BE REMOVABLE  
DO NOT GLUE INTO LADDER RACK--SIMPLY SWAP OUT AS NEEDED



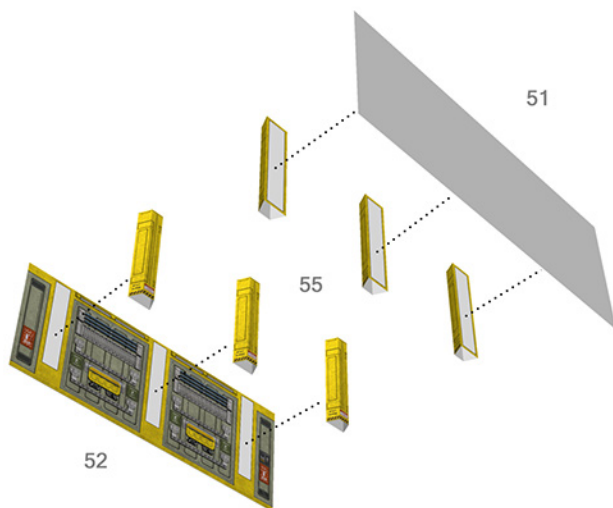
### MIDDLE FUSELAGE, STEP 1



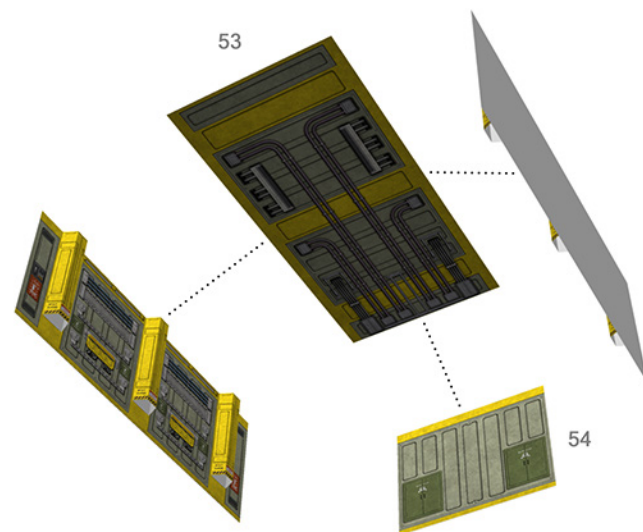
### MIDDLE FUSELAGE, STEP 2



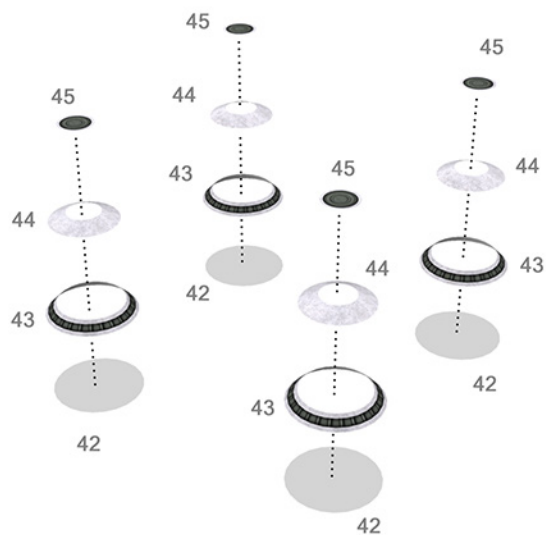
### MIDDLE FUSELAGE, STEP 3



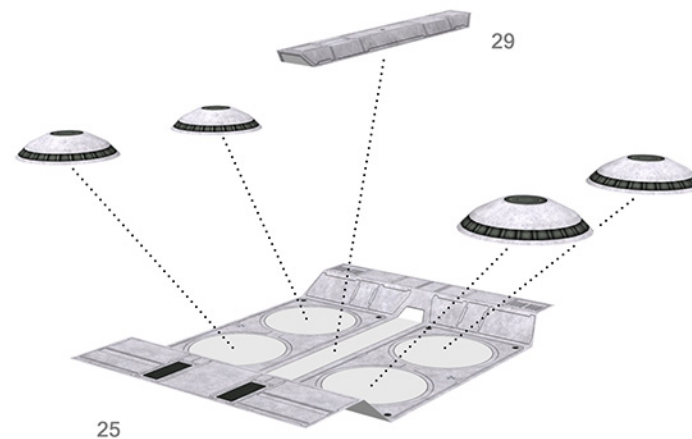
### MIDDLE FUSELAGE, STEP 4



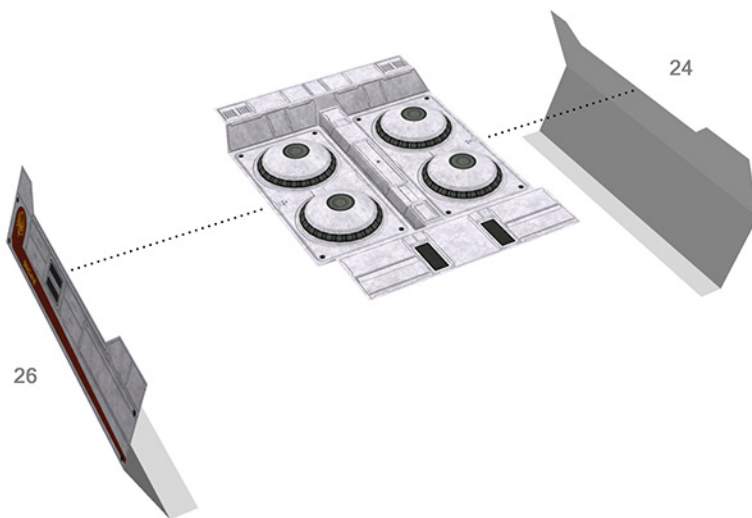
### MIDDLE FUSELAGE, STEP 5



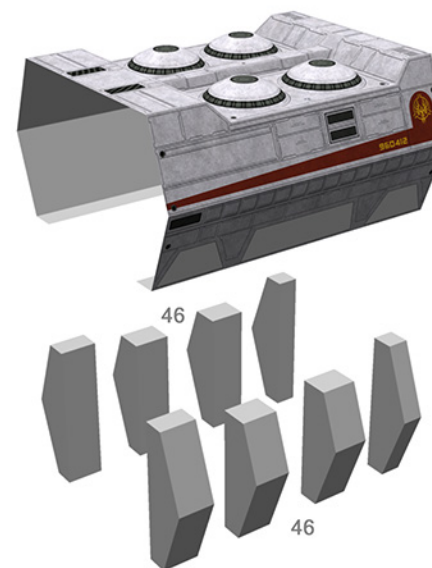
### MIDDLE FUSELAGE, STEP 6



### MIDDLE FUSELAGE, STEP 7



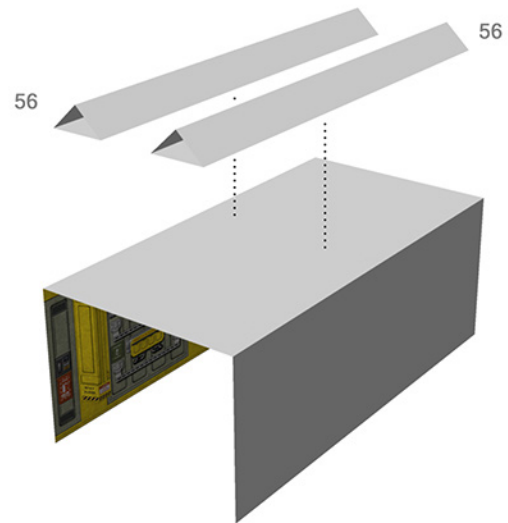
### MIDDLE FUSELAGE, STEP 8



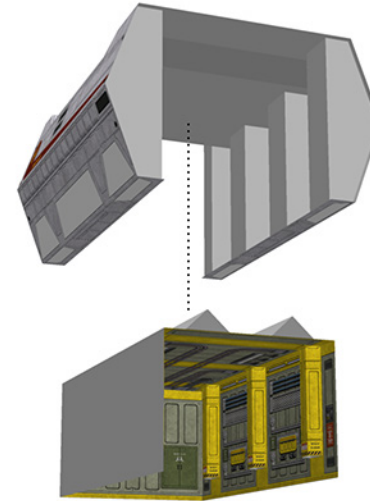
APPLY GLUE ONLY TO OUTER SIDES OF REINFORCERS



### MIDDLE FUSELAGE, STEP 9

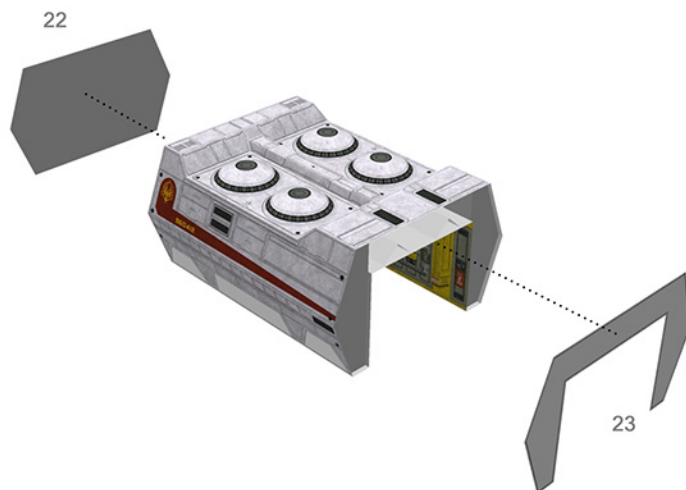


### MIDDLE FUSELAGE, STEP 10

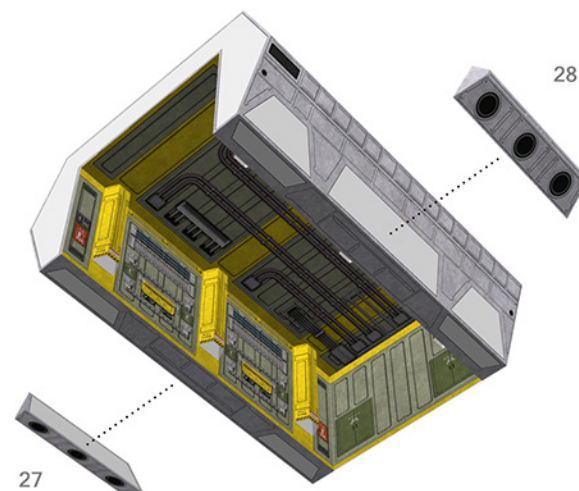


APPLY GLUE ONLY TO FLAPS ALONG BOTTOM OF FUSELAGE  
AFTER INSERTING CARGO BAY

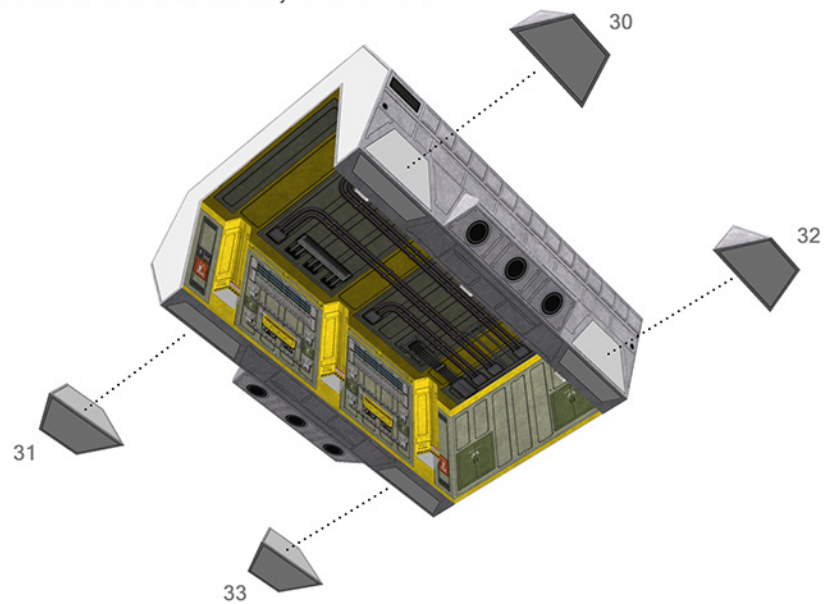
### MIDDLE FUSELAGE, STEP 11



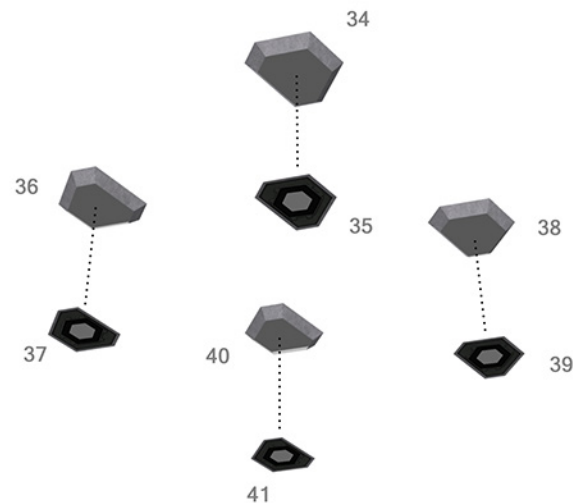
### MIDDLE FUSELAGE, STEP 12



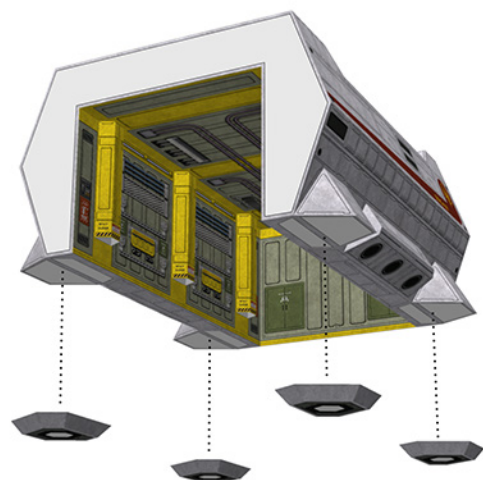
### MIDDLE FUSELAGE, STEP 13



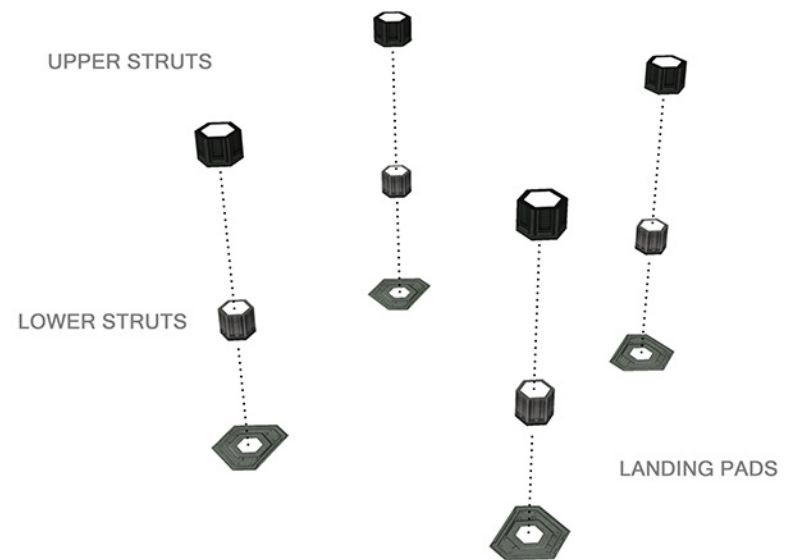
### MIDDLE FUSELAGE, STEP 14



### MIDDLE FUSELAGE, STEP 15

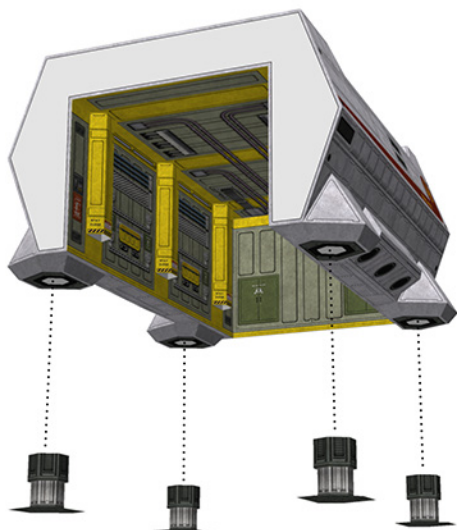


### MIDDLE FUSELAGE, STEP 16

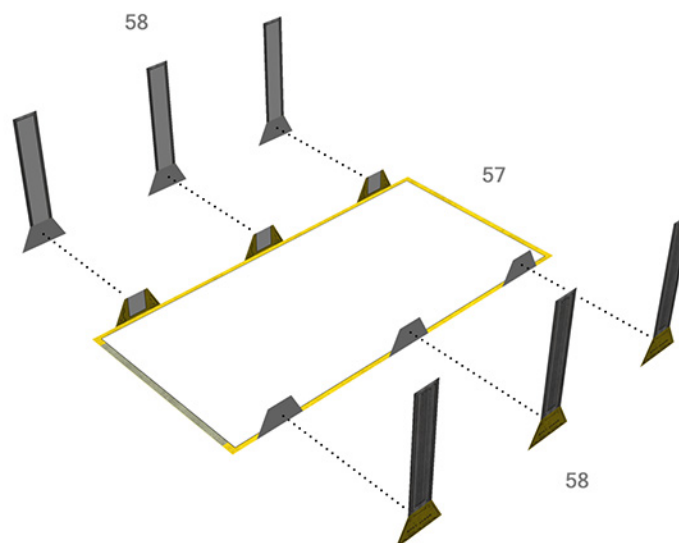




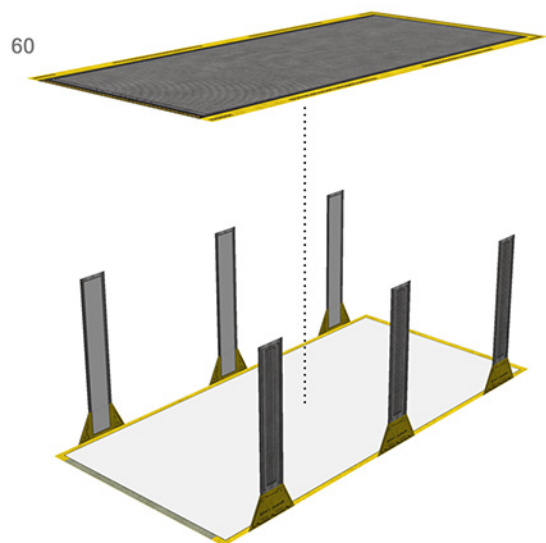
MIDDLE FUSELAGE, STEP 17



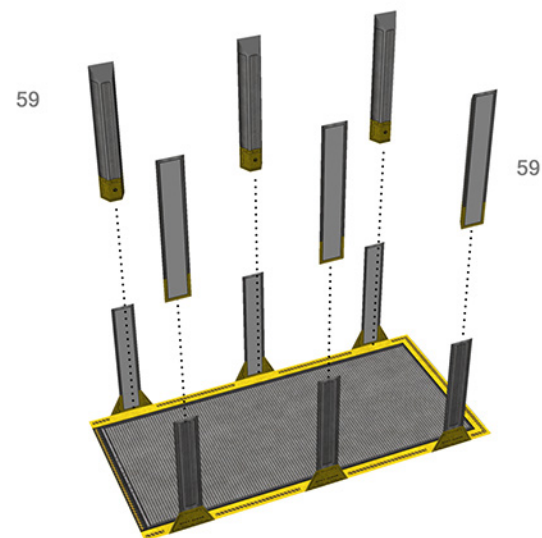
MIDDLE FUSELAGE, STEP 18



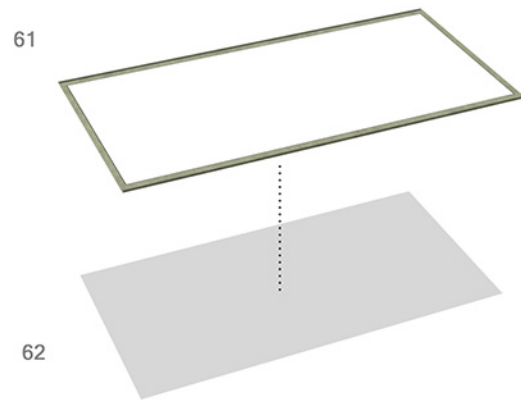
MIDDLE FUSELAGE, STEP 19



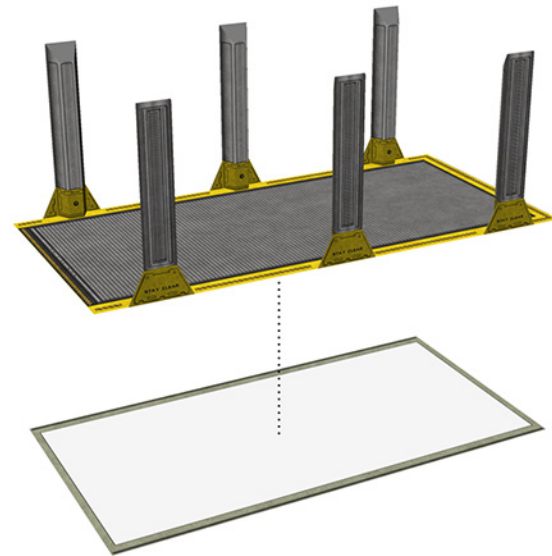
MIDDLE FUSELAGE, STEP 20



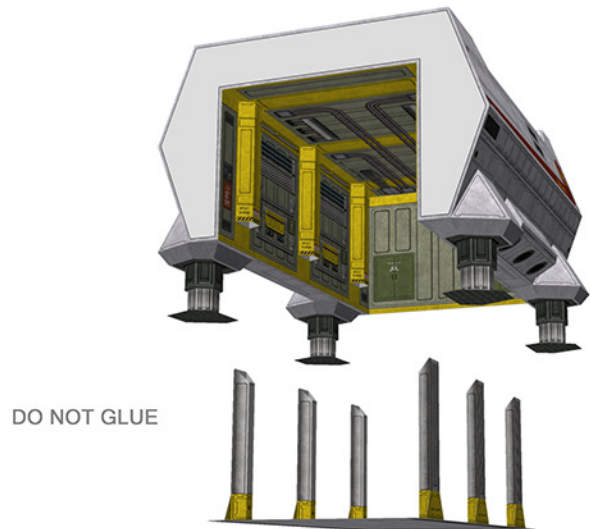
### MIDDLE FUSELAGE, STEP 21



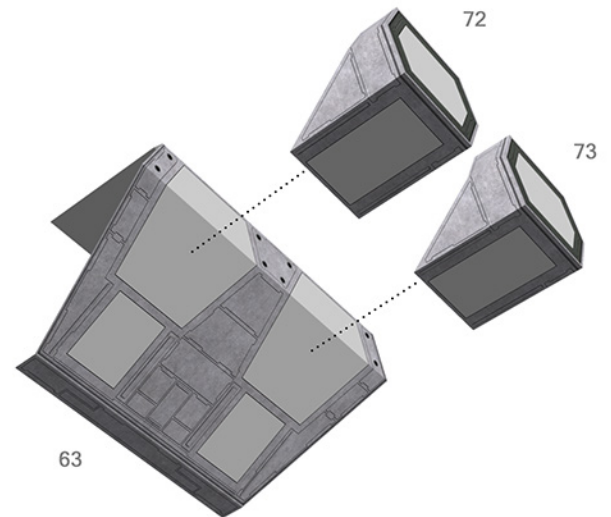
### MIDDLE FUSELAGE, STEP 22



### MIDDLE FUSELAGE, STEP 23

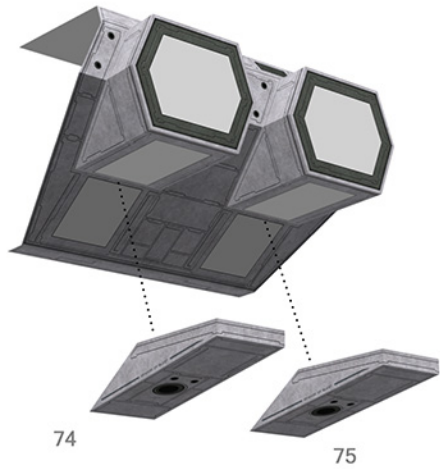


### REAR FUSELAGE, STEP 1

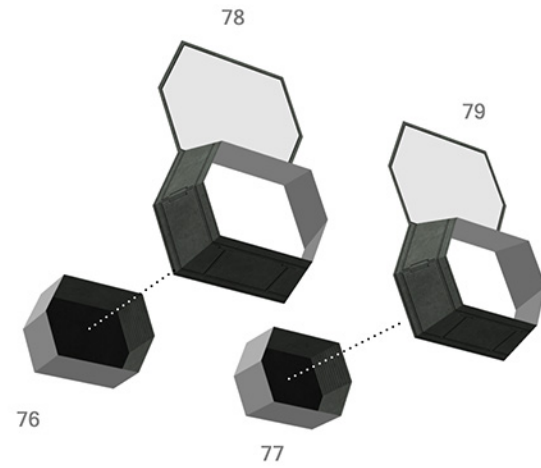




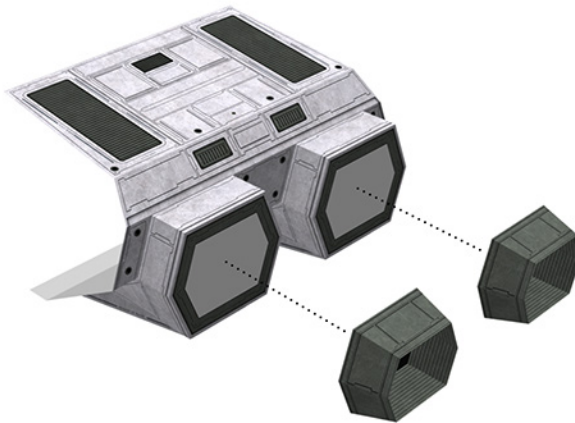
## REAR FUSELAGE, STEP 2



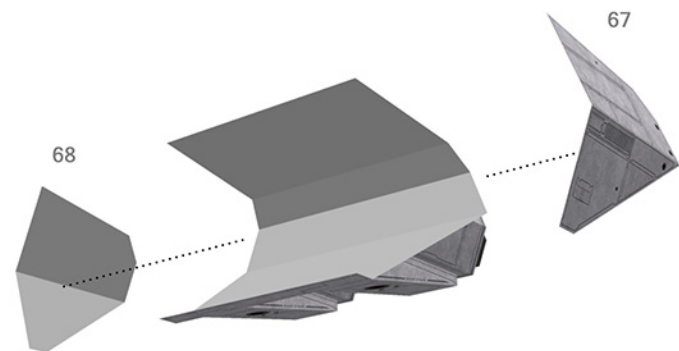
## REAR FUSELAGE, STEP 3



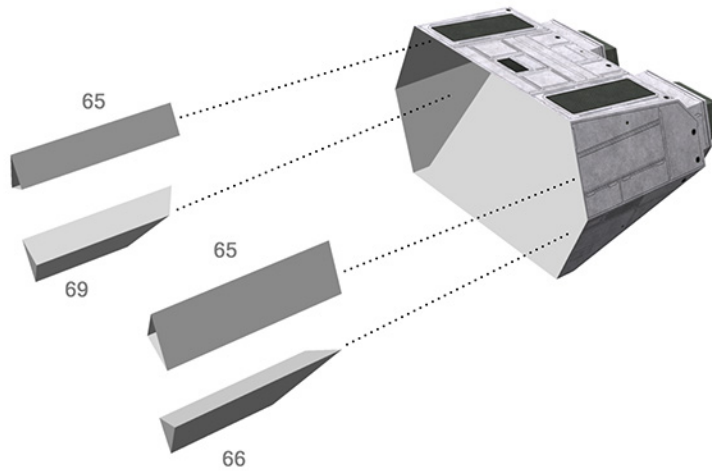
## REAR FUSELAGE, STEP 4



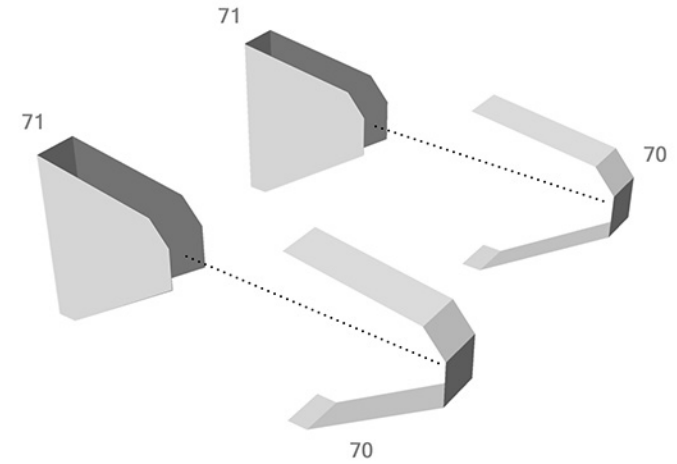
## REAR FUSELAGE, STEP 5



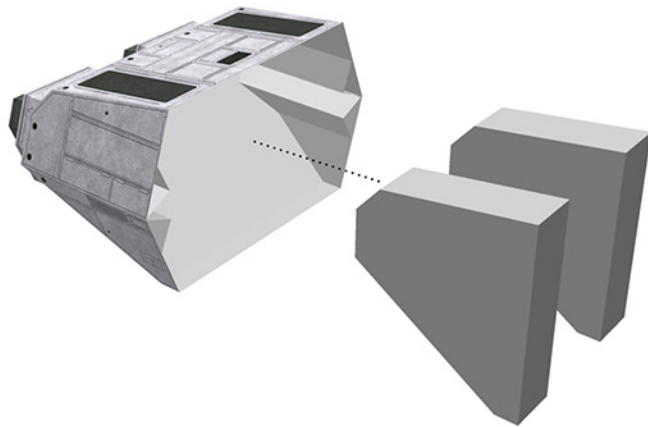
### REAR FUSELAGE, STEP 6



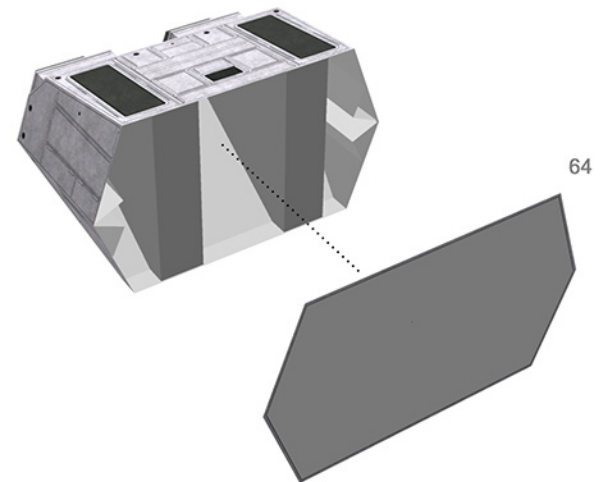
### REAR FUSELAGE, STEP 7



### REAR FUSELAGE, STEP 8



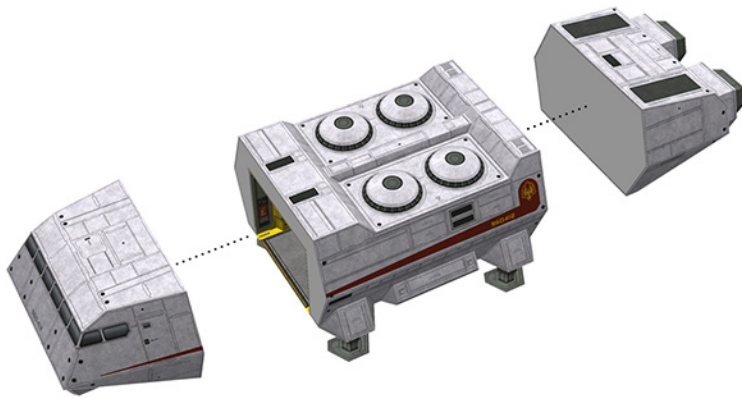
### REAR FUSELAGE, STEP 9



APPLY GLUE ONLY TO LOWER REAR SLOPE OF REINFORCERS



FINAL ASSEMBLY



COMPLETED MODEL



MODEL FEATURES



FUNCTIONAL CARGO BAY



FUNCTIONAL PERSONNEL RAMP