

I:60 SCALE CARD MODEL



M722 LIGHT EXPEDITIONARY VEHICLE

Page Count: 9

Difficulty Level: Intermediate

Dimensions: 2.25" x 3.75" x 7.25" (58mm x 95mm x 184mm)

Compatible with 28mm sized miniatures



COLORS AND OPTIONS



HELO DRAB



TAN



GRAY



WHITE



STOWABLE TURRET



SLIDING DOORS

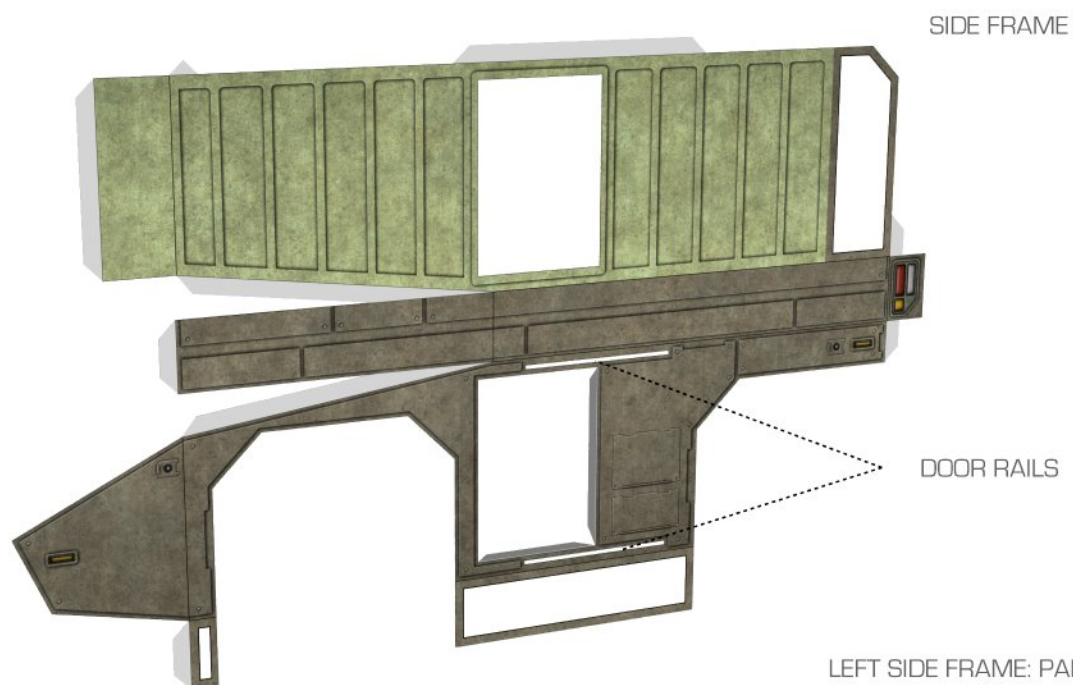


FUNCTIONAL INTERIOR



TROOP SEATING

SIDE FRAMES, STEP 1



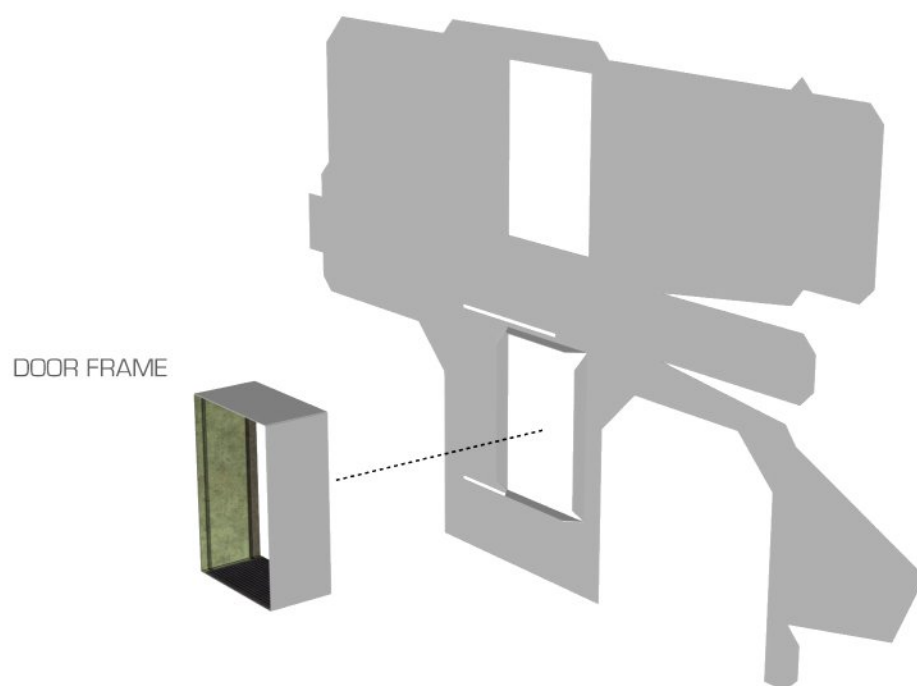
LEFT SIDE FRAME: PART 13

RIGHT SIDE FRAME: PART 01

SCORE/CREASE AND PREFOLD SIDE FRAMES BEFORE CUTTING OUT DOOR RAILS

NOTE: DOOR RAILS ARE CUT BY HAND FOR BOTH HAND-CUT AND MACHINE-CUT VERSIONS

SIDE FRAMES, STEP 2



LEFT DOOR FRAME: PART 03

RIGHT DOOR FRAME: PART 11

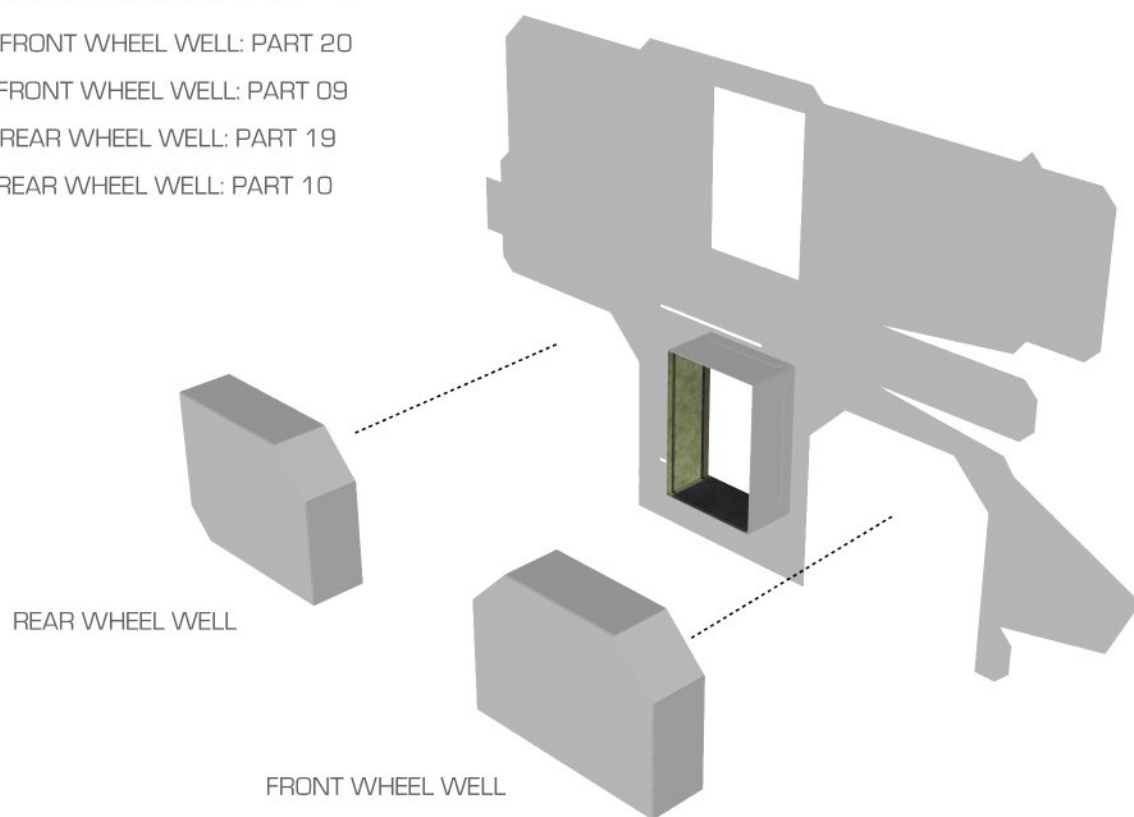
SIDE FRAMES, STEP 3

R FRONT WHEEL WELL: PART 20

L FRONT WHEEL WELL: PART 09

R REAR WHEEL WELL: PART 19

L REAR WHEEL WELL: PART 10



SIDE FRAMES, STEP 3 REFERENCE



SIDE FRAMES, STEP 4

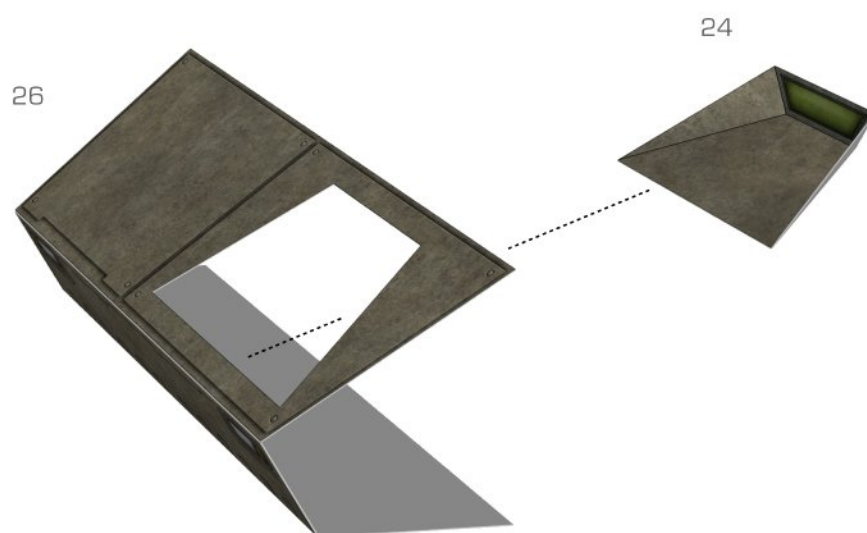
FOLD UP AND GLUE SIDE FRAMES TOGETHER



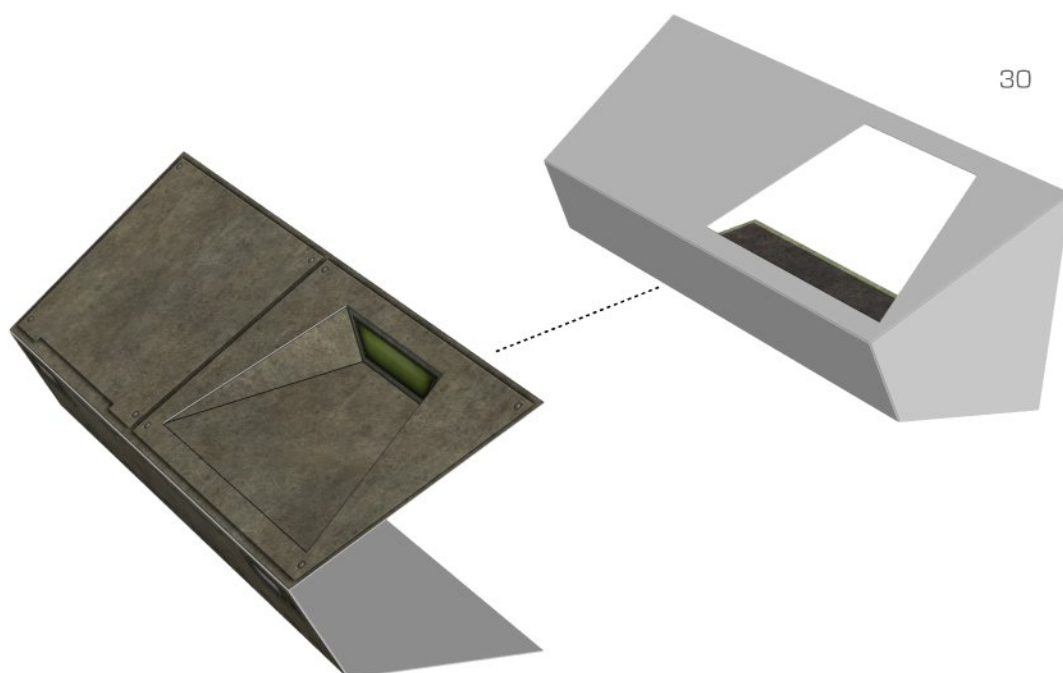
SIDE FRAMES, STEP 4 REFERENCE



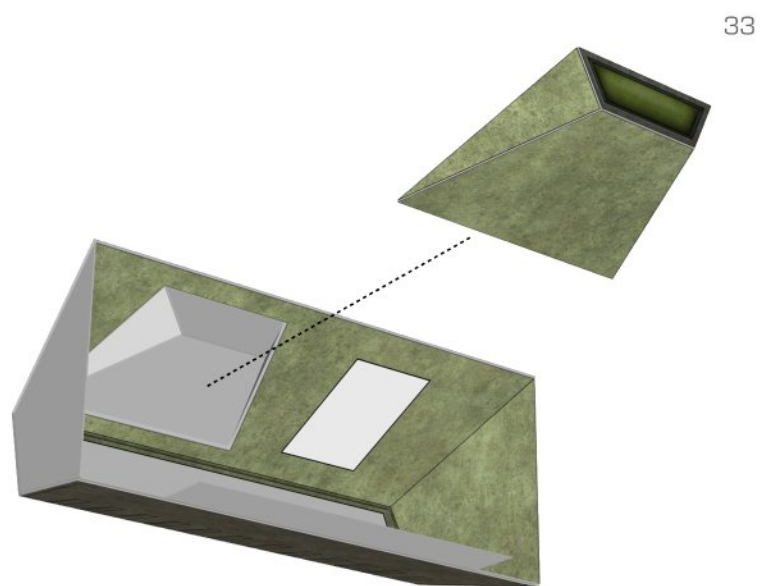
NOSE, STEP 1



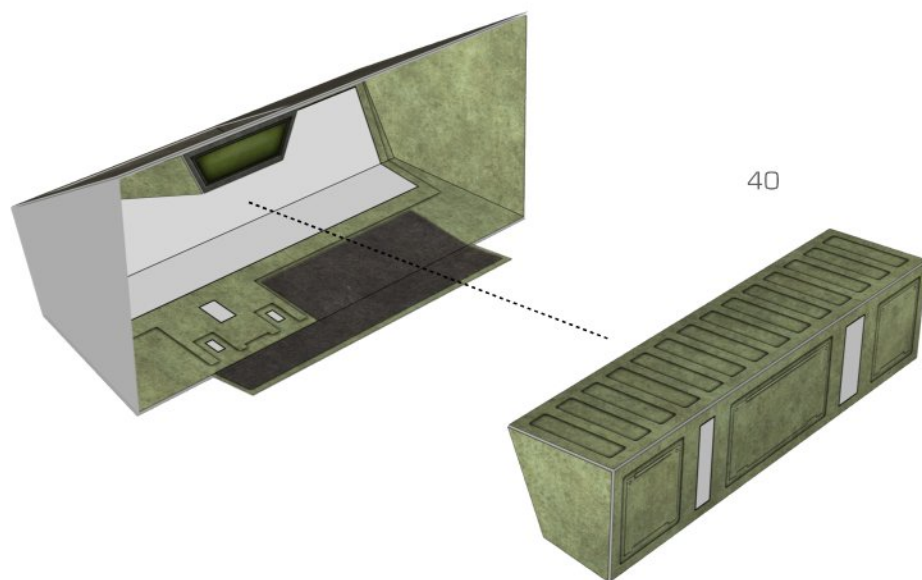
NOSE, STEP 2



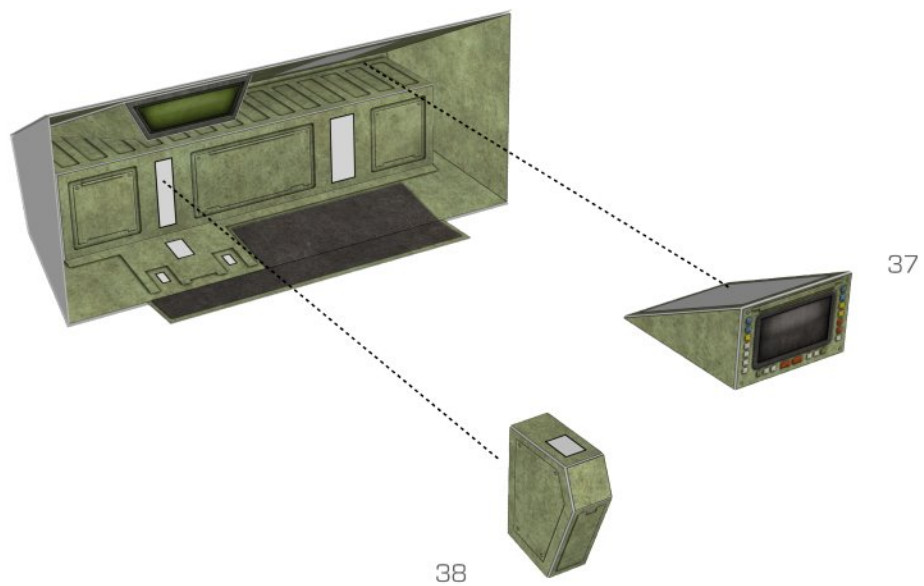
NOSE, STEP 3



NOSE, STEP 4



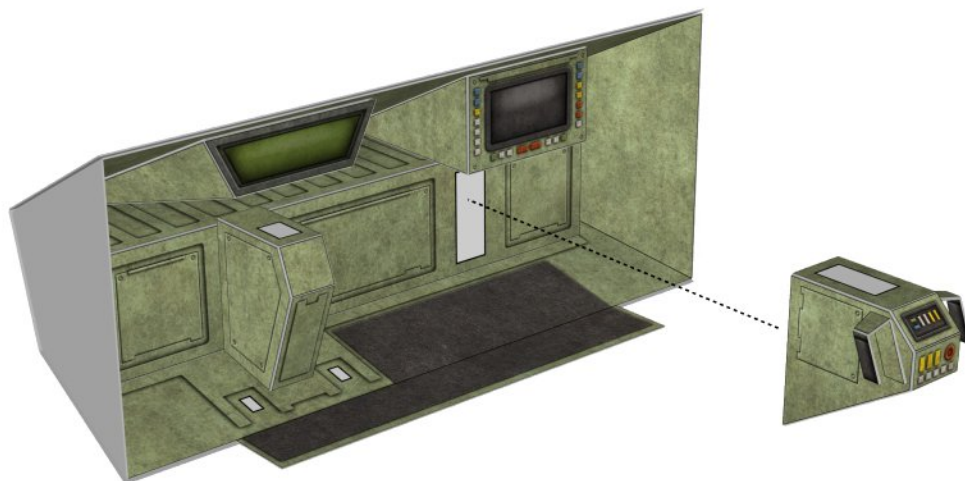
NOSE, STEP 5



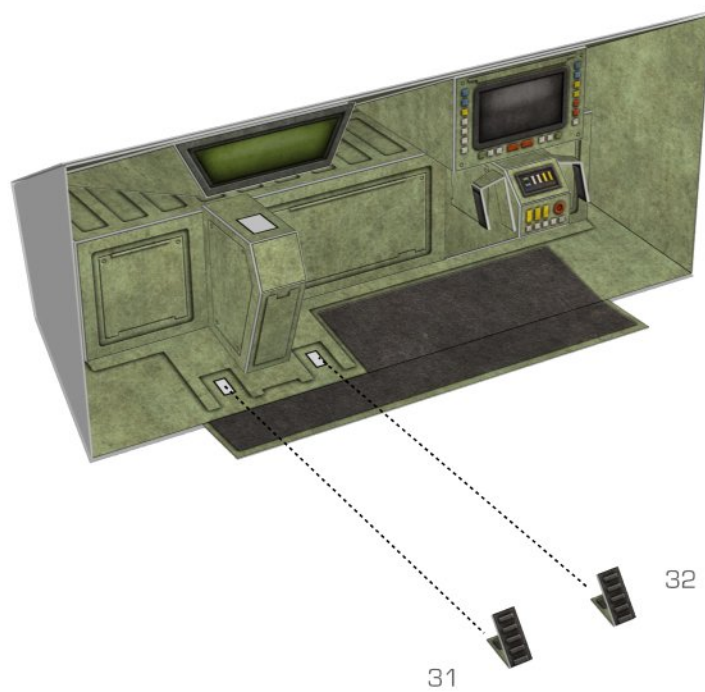
NOSE, STEP 6



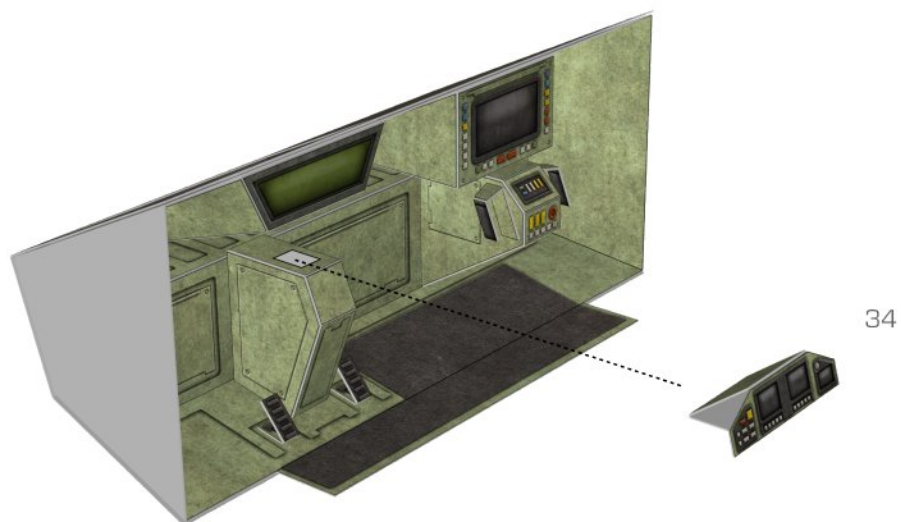
NOSE, STEP 7



NOSE, STEP 8



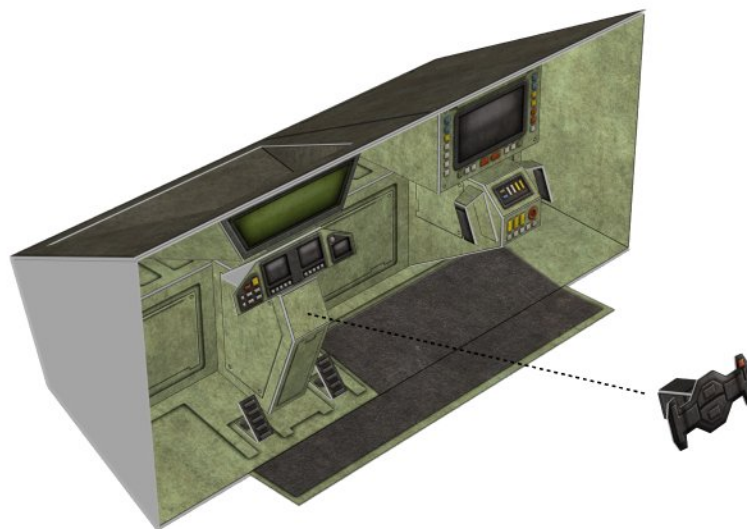
NOSE, STEP 9



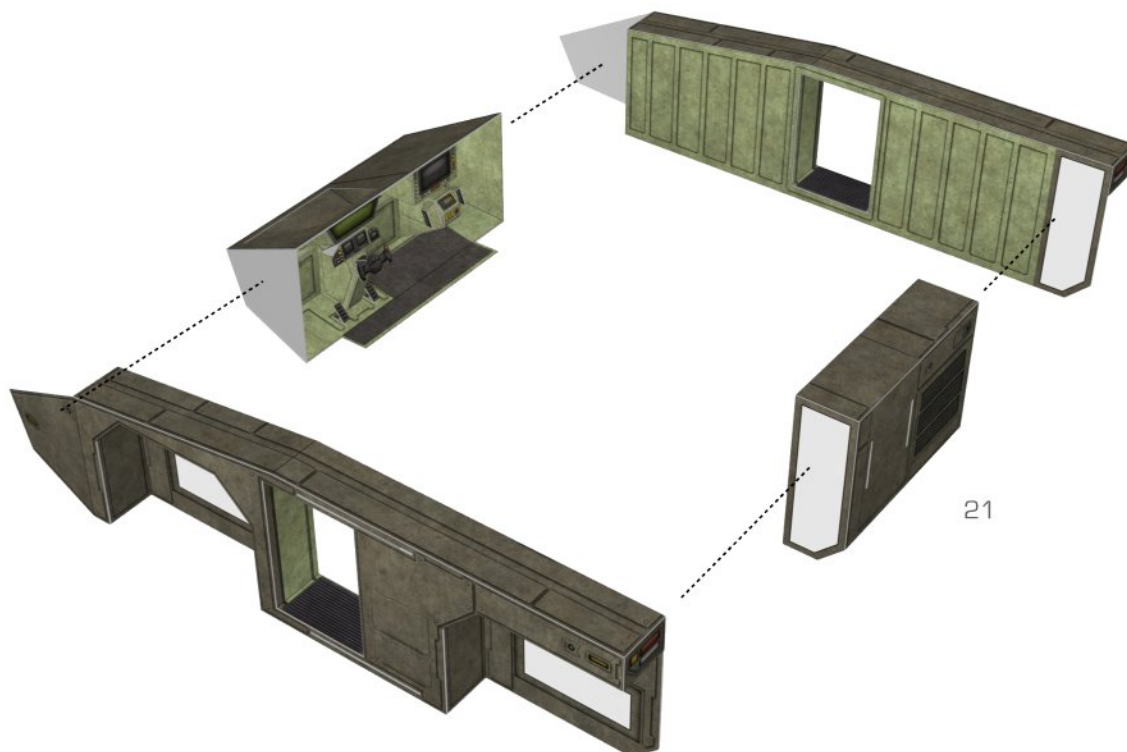
NOSE, STEP 10



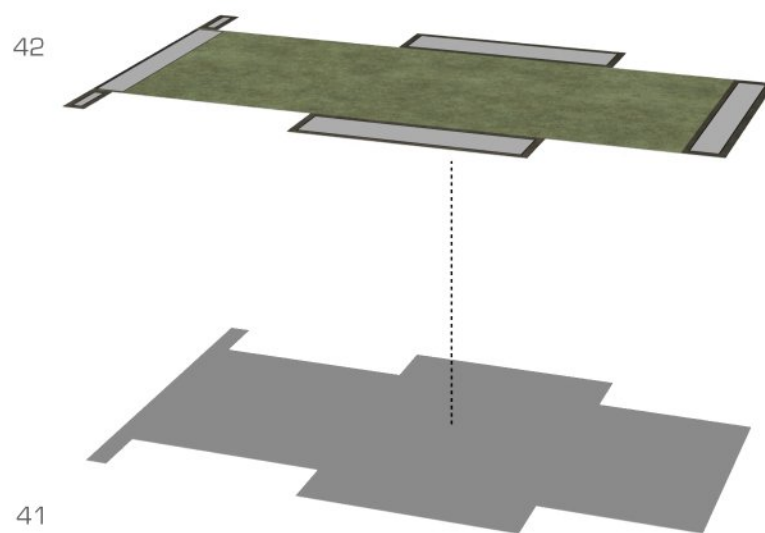
NOSE, STEP 11



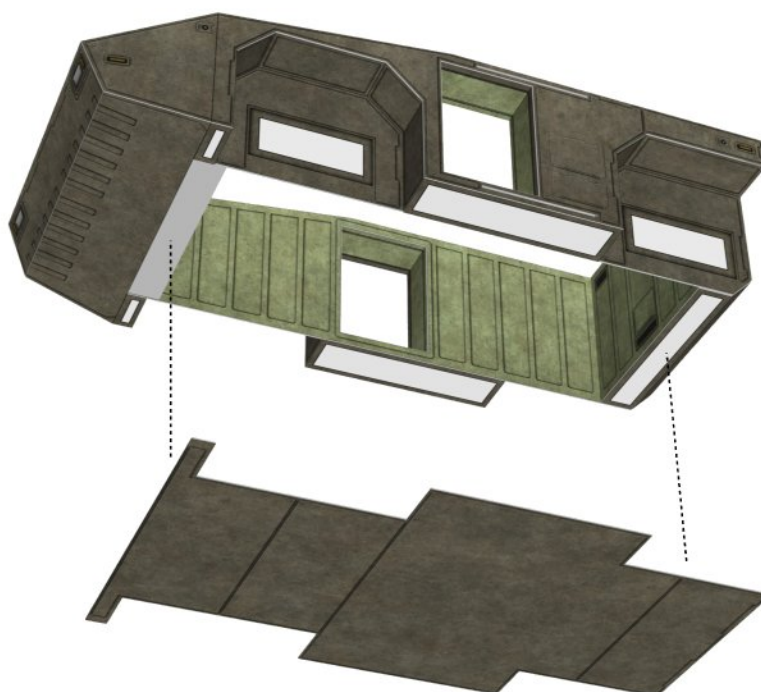
BODY, STEP 1



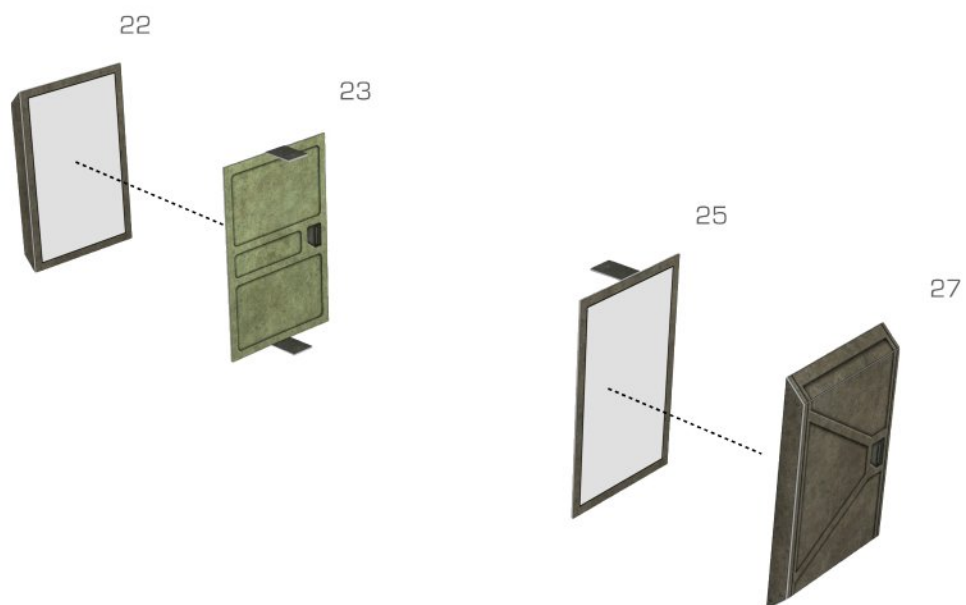
BODY, STEP 2



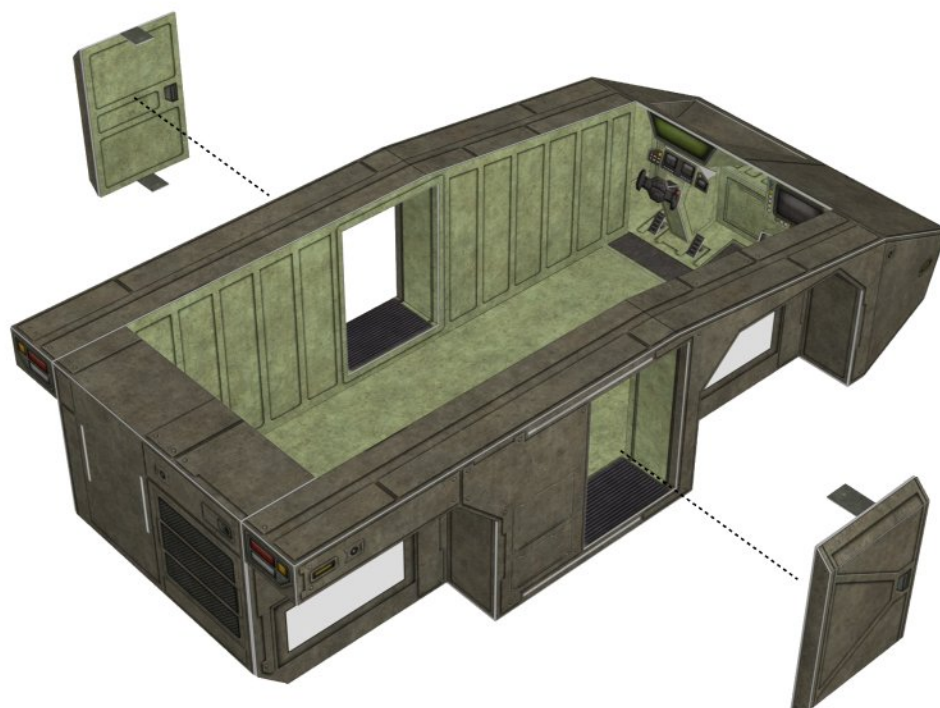
BODY, STEP 3



SLIDING DOORS, STEP 1

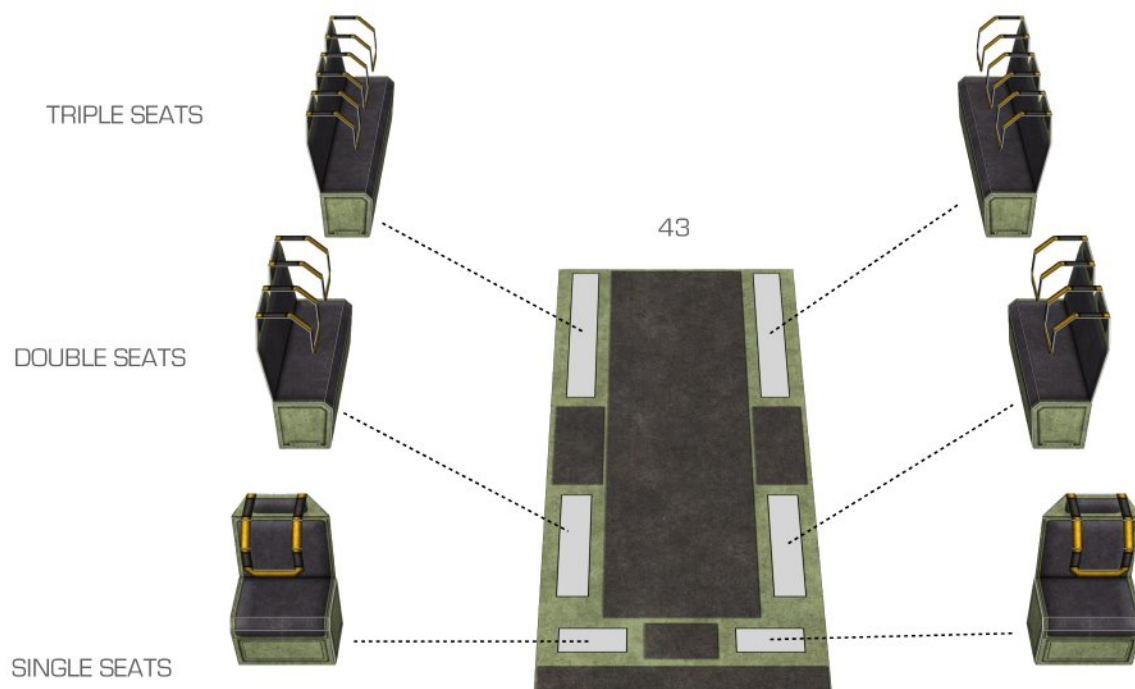


SLIDING DOORS, STEP 2

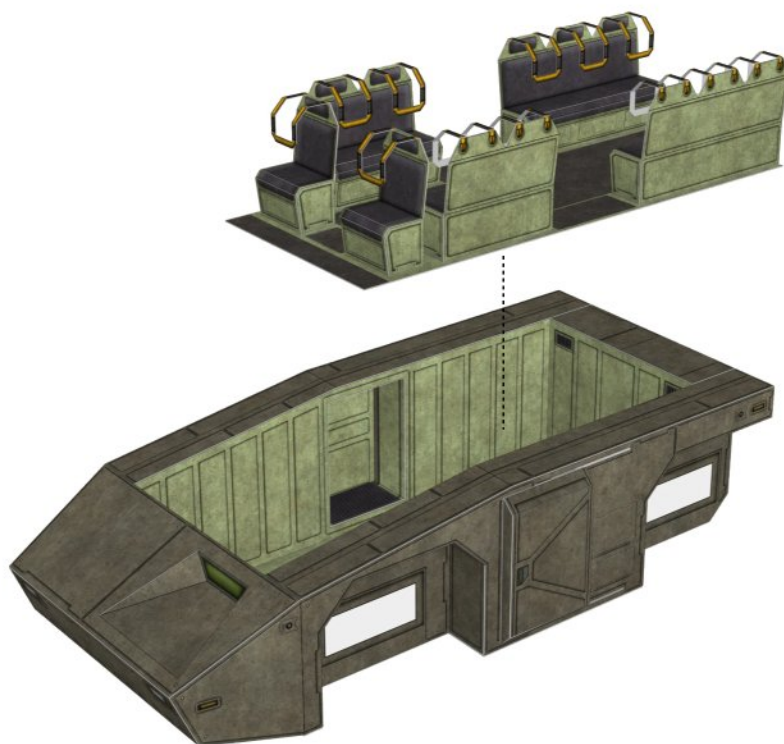


DO NOT GLUE—DOORS HOOK INTO DOOR RAILS

INTERIOR, STEP 1

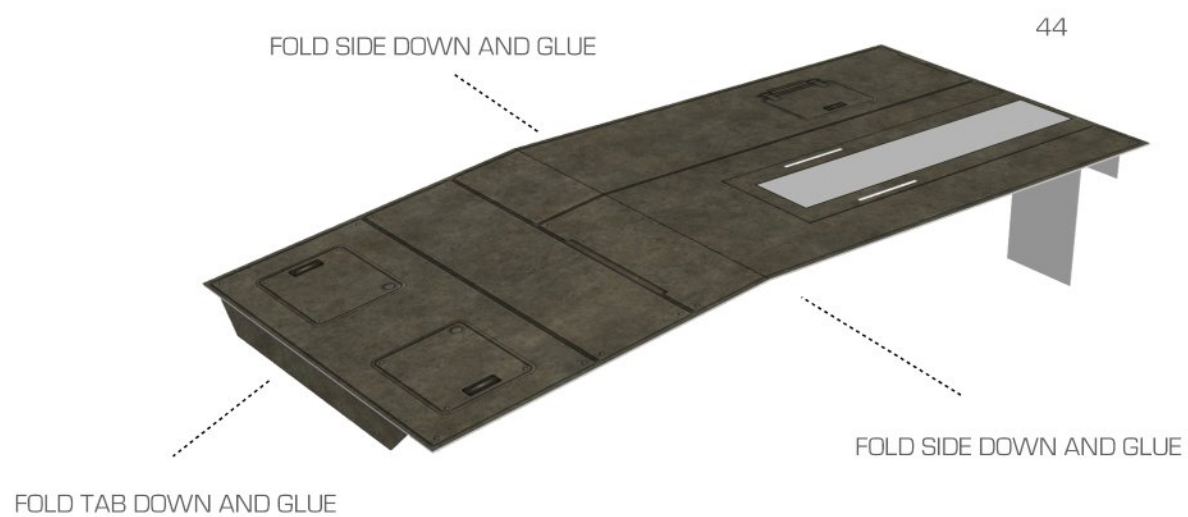


INTERIOR, STEP 2

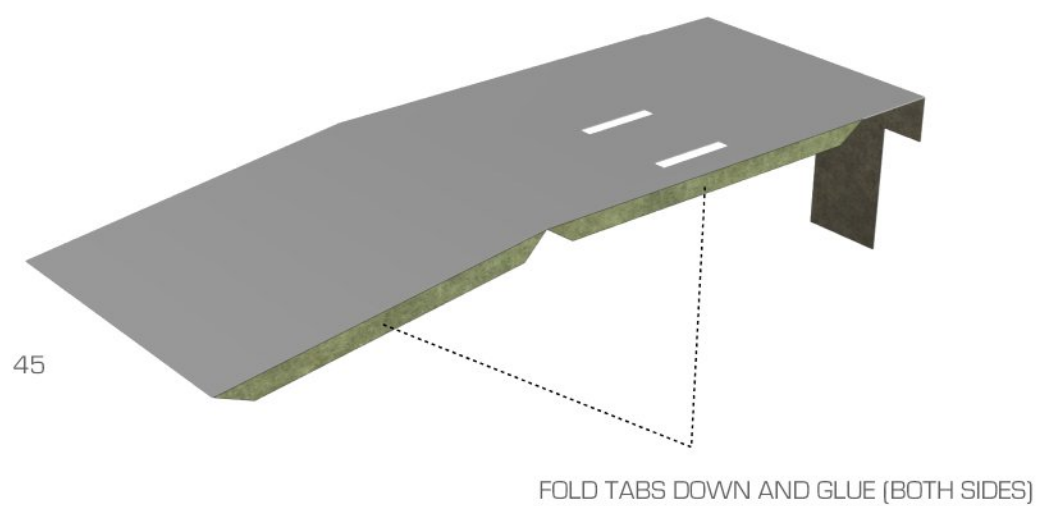


DO NOT GLUE INTERIOR IN PLACE

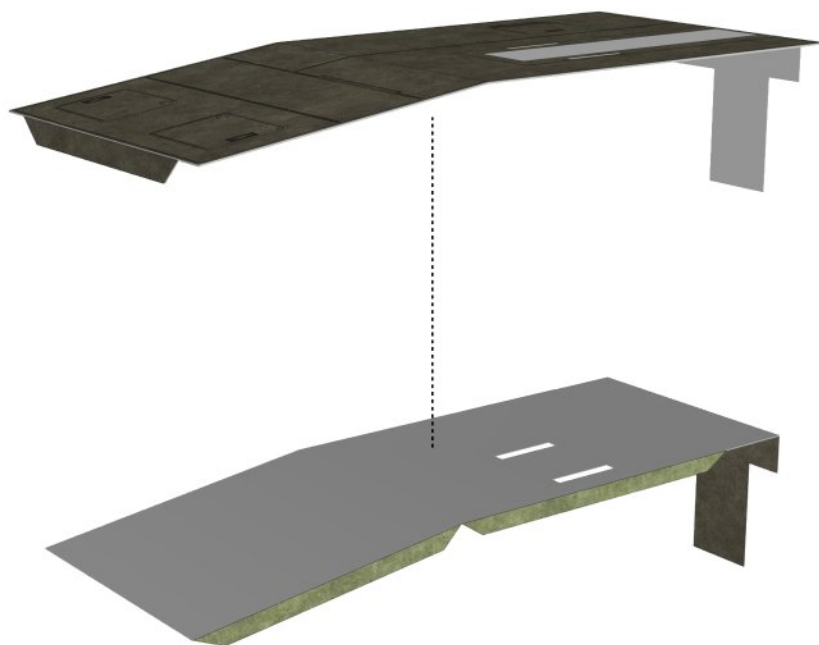
TOP DECK, STEP 1



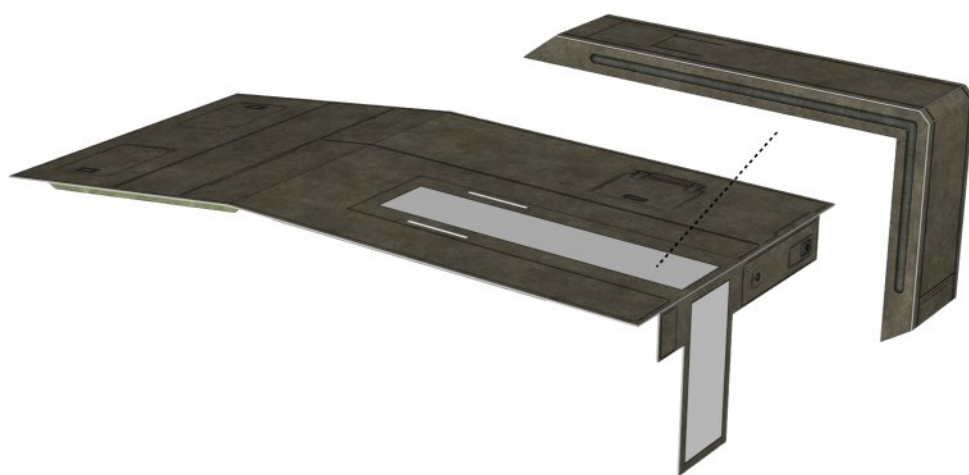
TOP DECK, STEP 2



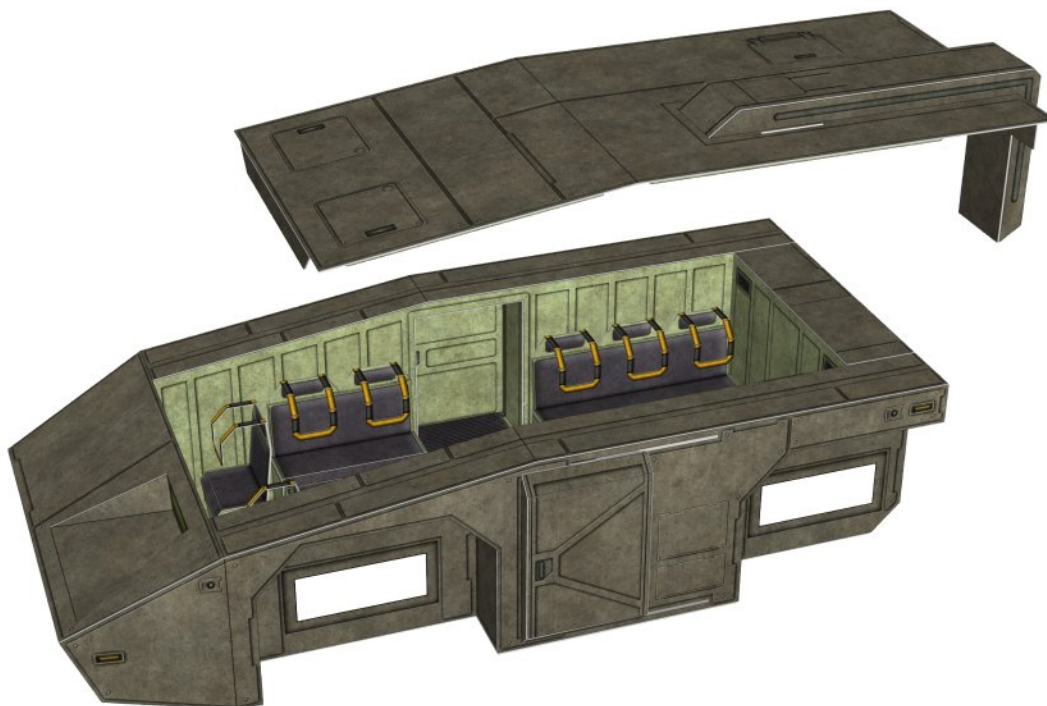
TOP DECK, STEP 3



TOP DECK, STEP 4



TOP DECK, STEP 5

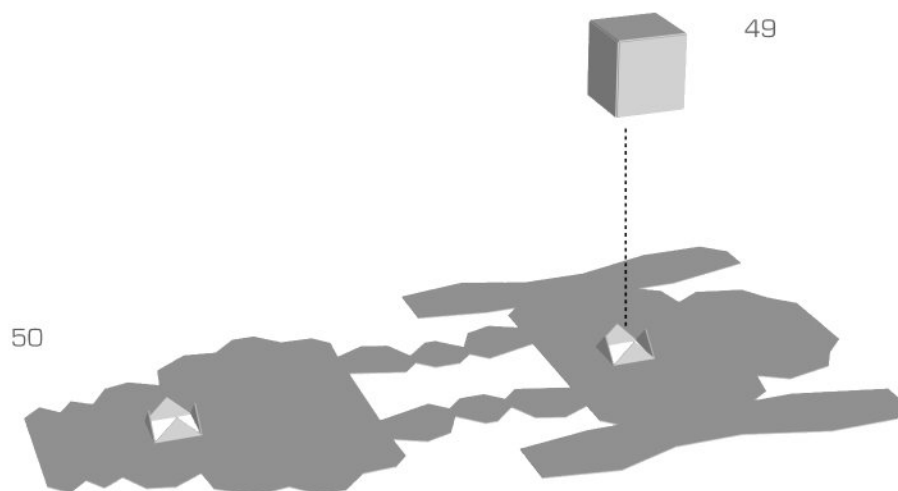


TOP DECK IS HELD IN PLACE BY UNDERSIDE TABS, DO NOT GLUE

REMOTE WEAPON STATION, STEP 1

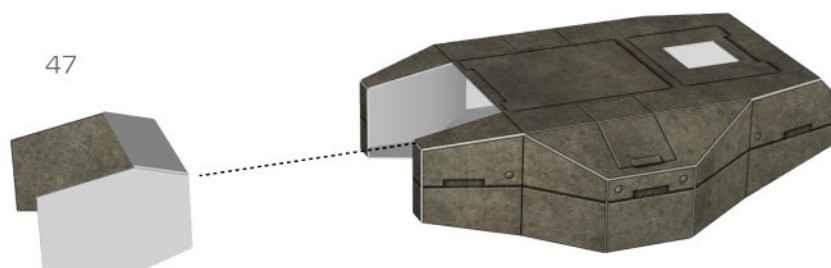


REMOTE WEAPON STATION, STEP 2



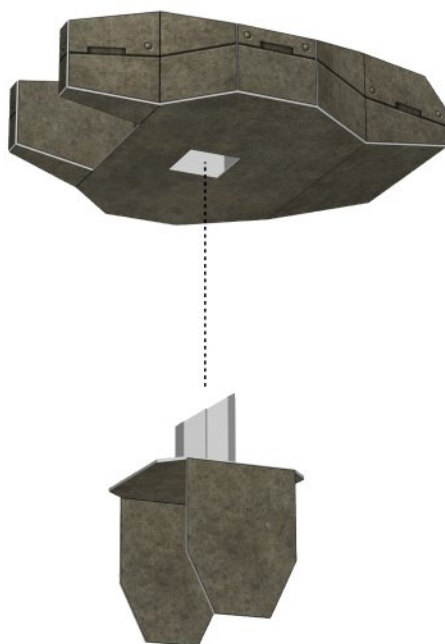
PART 49 IS THE TURRET REINFORCER. DO NOT BLOCK THE BOTTOM OPENING—FOLD THE GLUE TABS OUTWARDS.

REMOTE WEAPON STATION, STEP 3



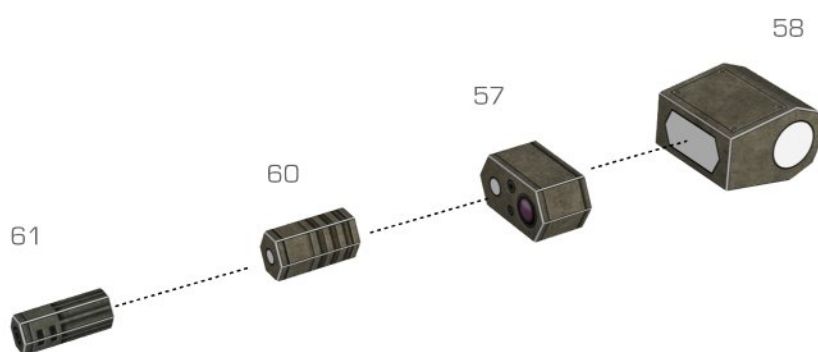
FOR BEST RESULTS, FOLD UP AND GLUE TURRET SIDES LAST, AFTER INSTALLING PART 47

REMOTE WEAPON STATION, STEP 4

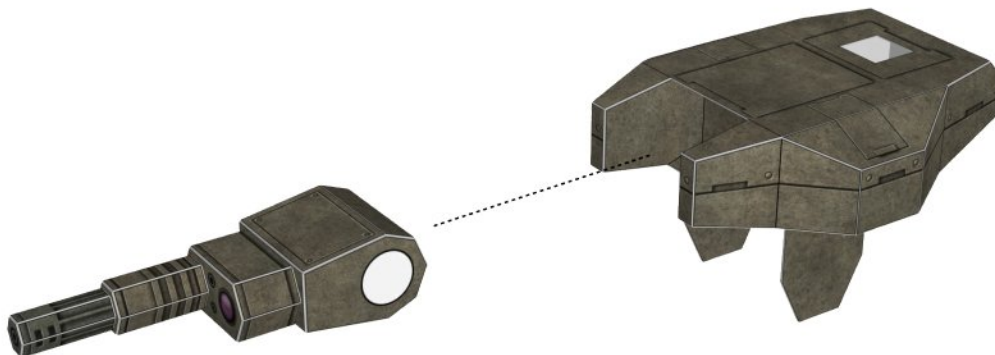


DO NOT GLUE—THE PEG/SOCKET SYSTEM ALLOWS THE TURRET TO BE REPOSITIONED AT DIFFERENT ANGLES.

REMOTE WEAPON STATION, STEP 5

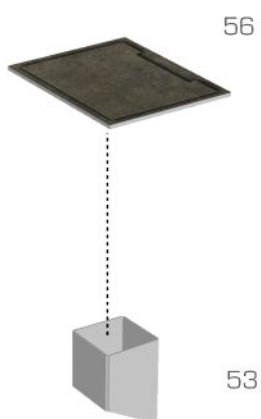


REMOTE WEAPON STATION, STEP 6

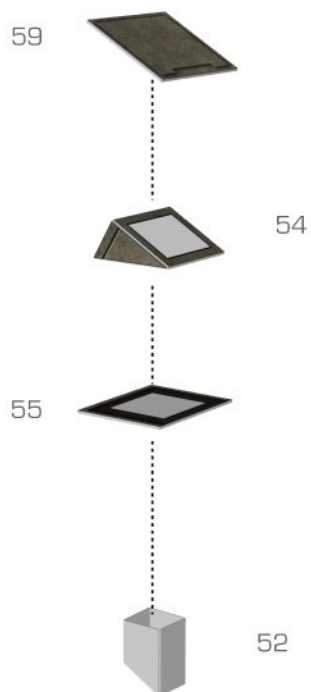


GLUING IS OPTIONAL

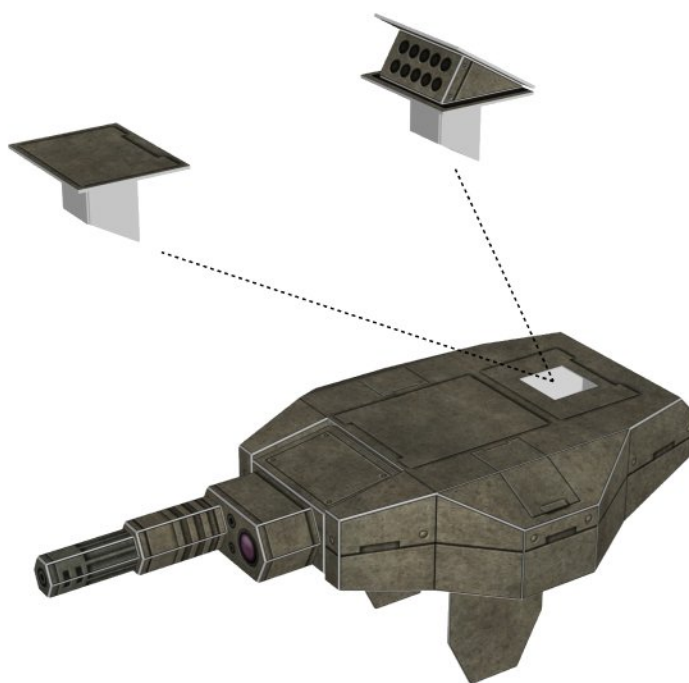
REMOTE WEAPON STATION, STEP 7



REMOTE WEAPON STATION, STEP 8



REMOTE WEAPON STATION, STEP 9



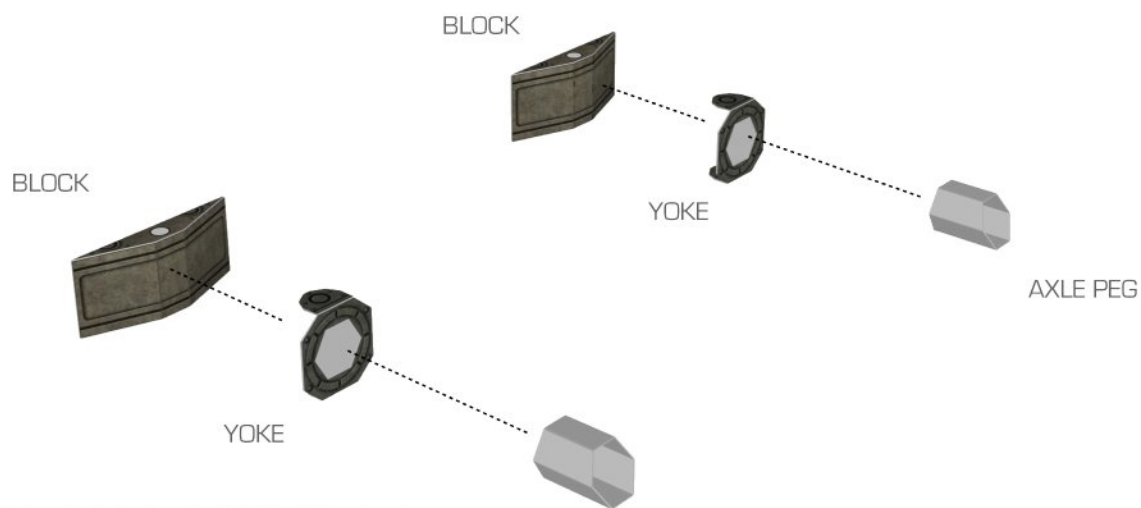
DO NOT GLUE—THESE PARTS REPRESENT SMOKE DISCHARGERS IN STOWED AND ACTIVE STATES

REMOTE WEAPON STATION, STEP 10



DO NOT GLUE—THE TURRET FITS INTO THE SLOTS ON THE TOP DECK AND THE REAR MODULE

SUSPENSION, STEP 1

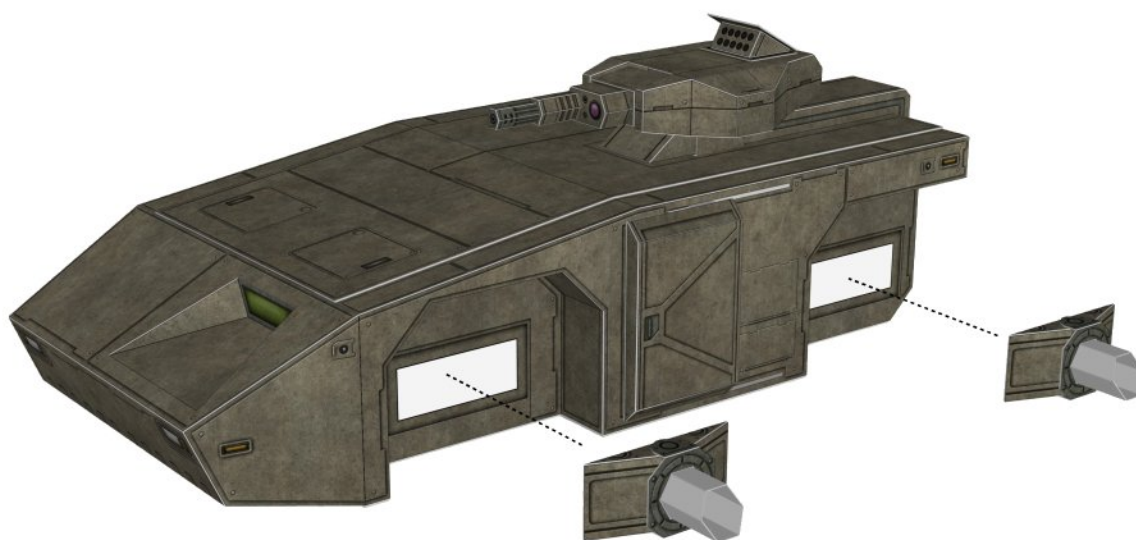


SUSPENSION BLOCKS: PARTS 02, 06, 12, 16

STEERING YOKES: PARTS 04, 05, 14, 15

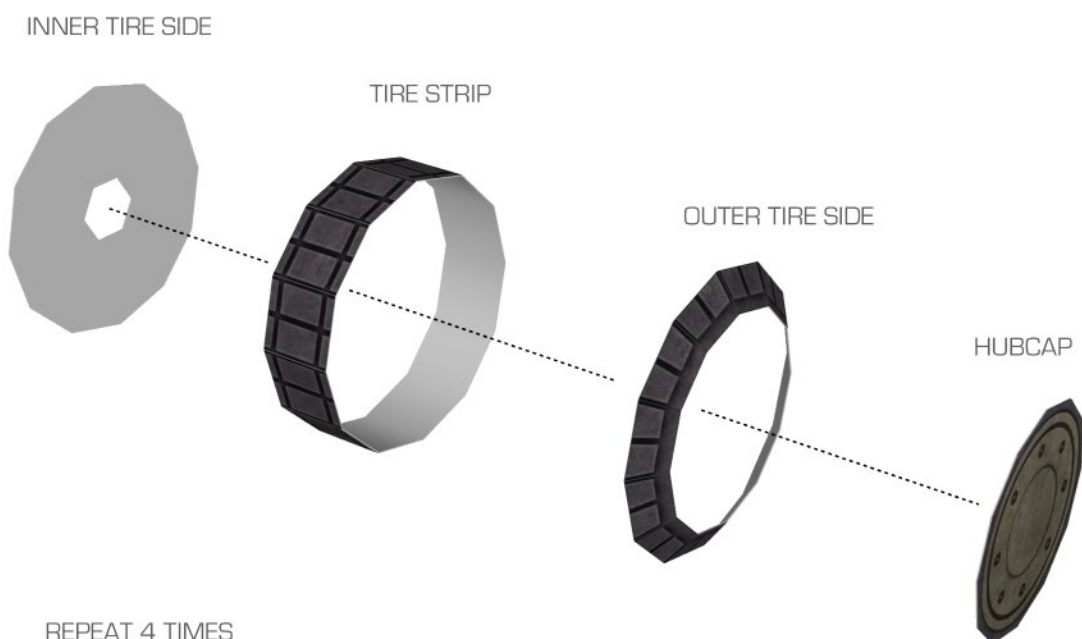
AXLE PEGS: PARTS 07, 08, 17, 18

SUSPENSION, STEP 2



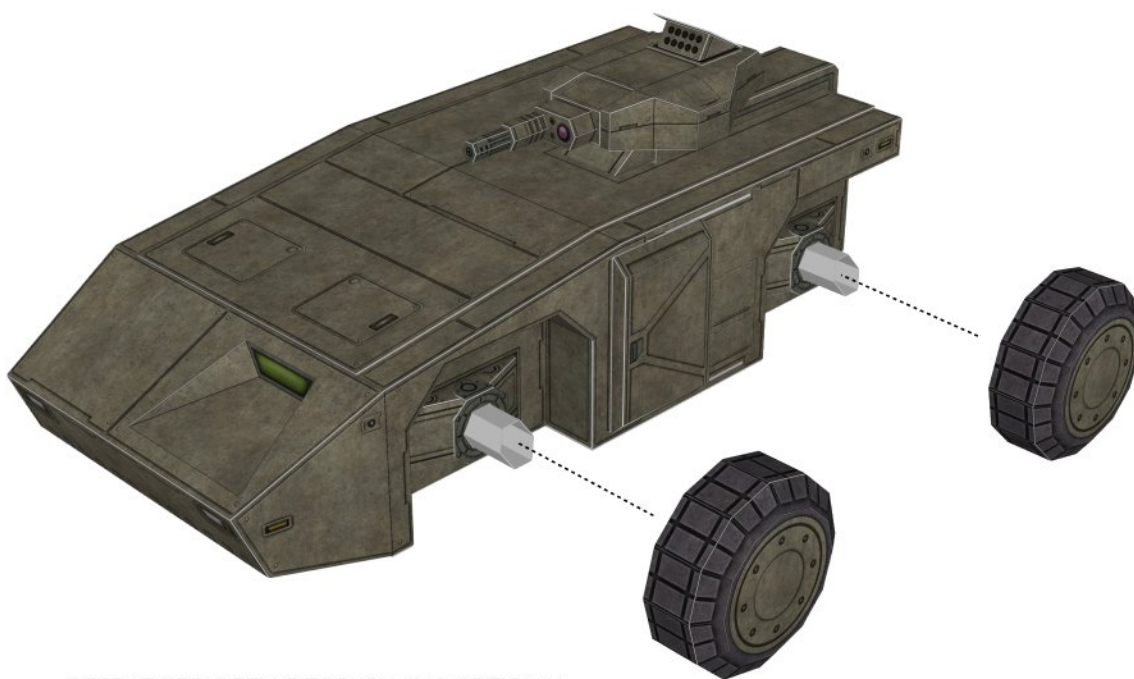
REPEAT FOR BOTH SIDES

SUSPENSION, STEP 3



REPEAT 4 TIMES

SUSPENSION, STEP 4



REPEAT FOR BOTH SIDES. GLUING OPTIONAL.

COMPLETED MODEL

