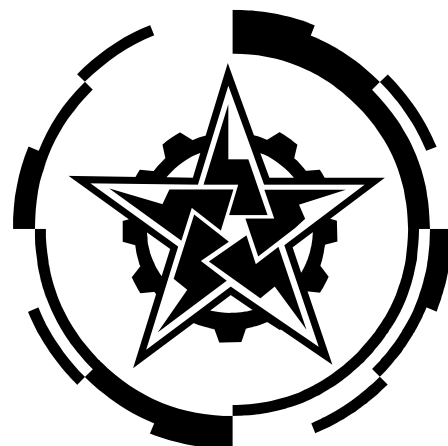


Planet StarFreak Dropship Series  
No. 1

# DH77-TC Pelican

1/430



© 2009 PSF



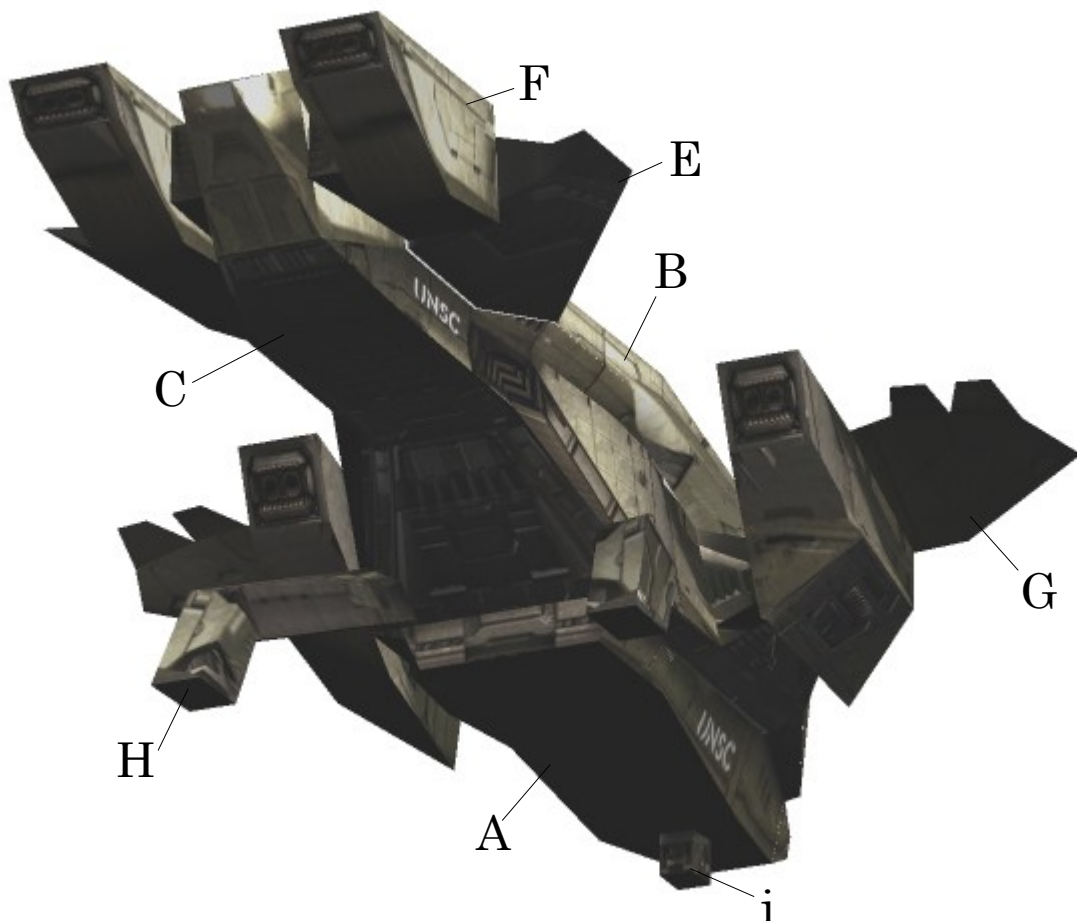
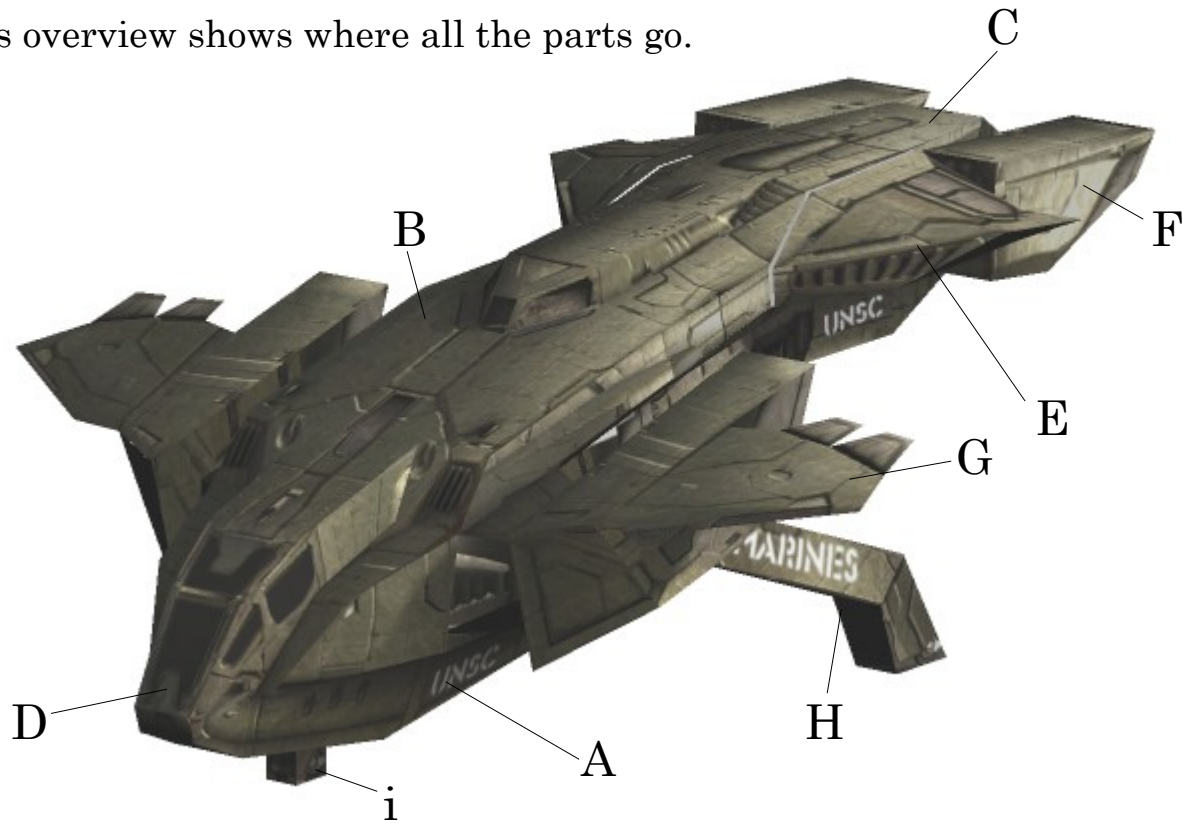
This is the first model in my dropship series. It is a simplified version of the larger Pelican model with new textures and a landing gear. I chose 1/430 scale because of Jan Rukr's small version of the Aliens „Cheyenne“-dropship.

This paper model was downloaded from  
[www.PlanetStarFreak.de](http://www.PlanetStarFreak.de)

# PSF: Dropship series – DH77-TC Pelican



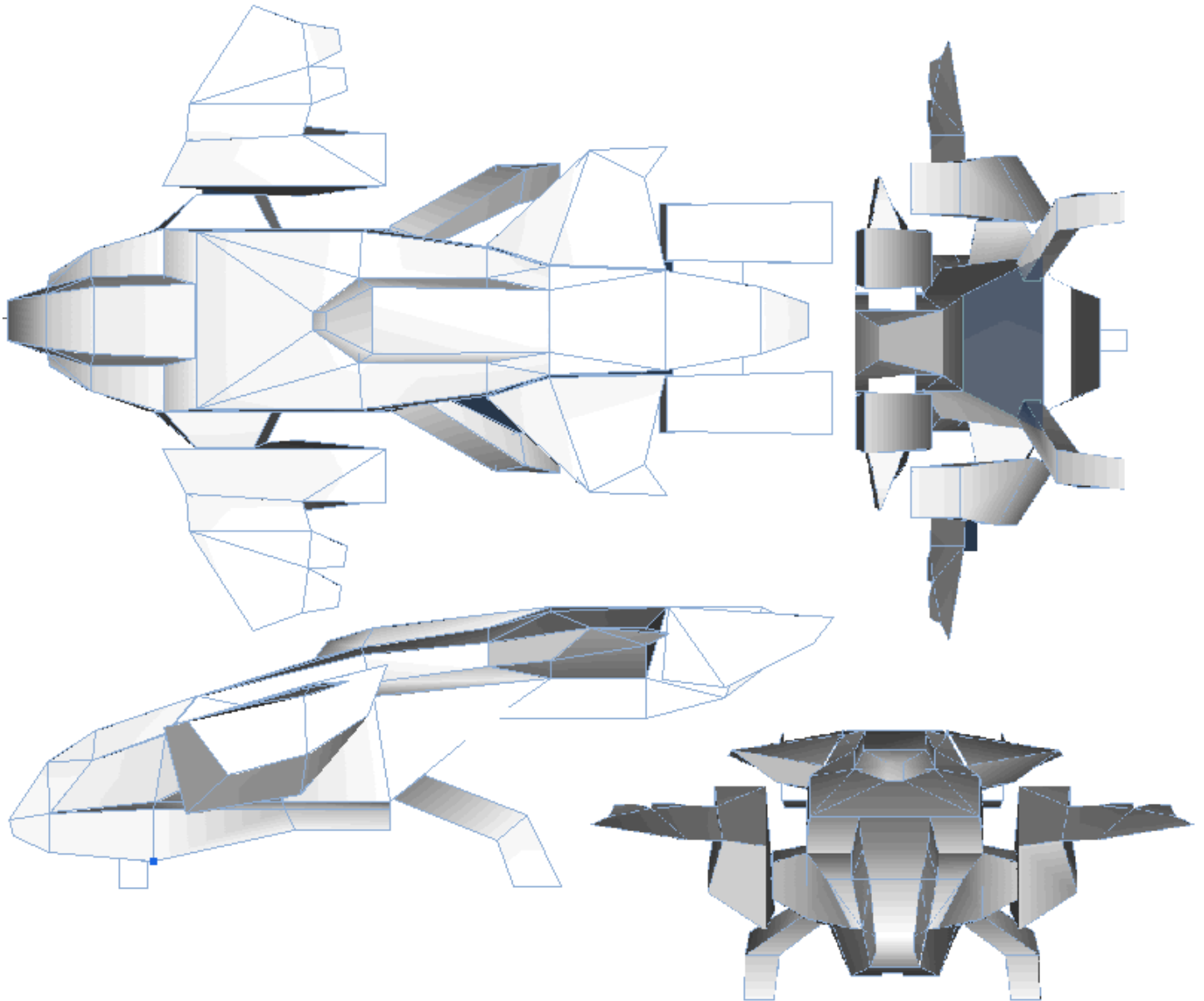
This overview shows where all the parts go.



# PSF: Dropship series – DH77-TC Pelican



## Orthographic views



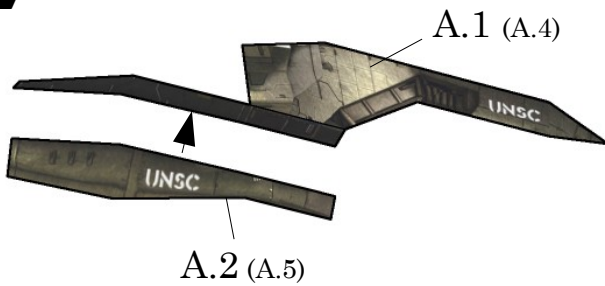




# PSF: Dropship series – DH77-TC Pelican

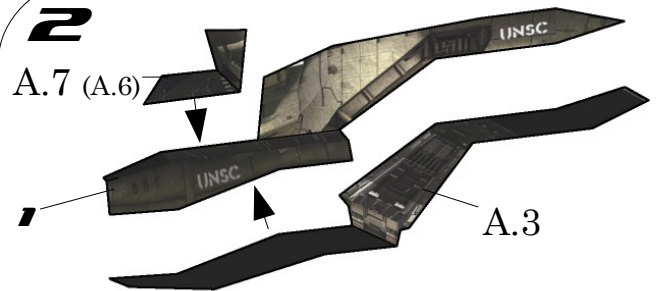


**1**



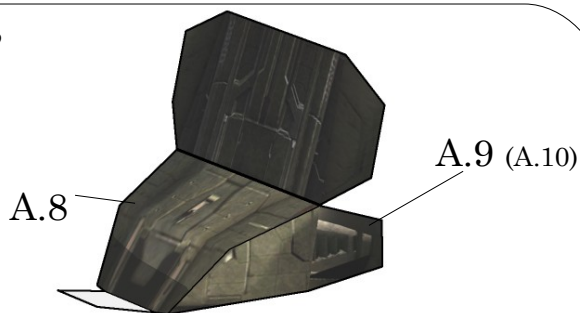
Attach part A.2 to A.1 (for the other side parts A.3 and A.4 respectively). There are no differences in building the two fuselage versions.

**2**



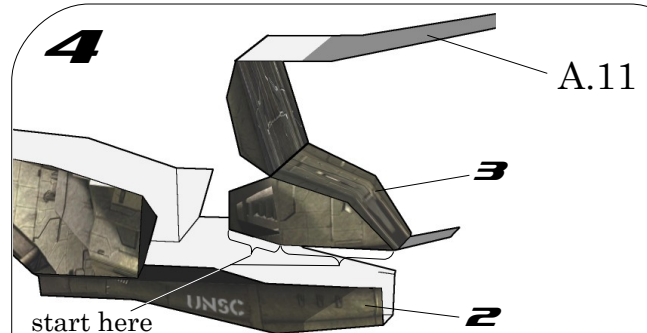
Attach parts A.7 and A.6 and connect the assemblies with part A.3.

**3**



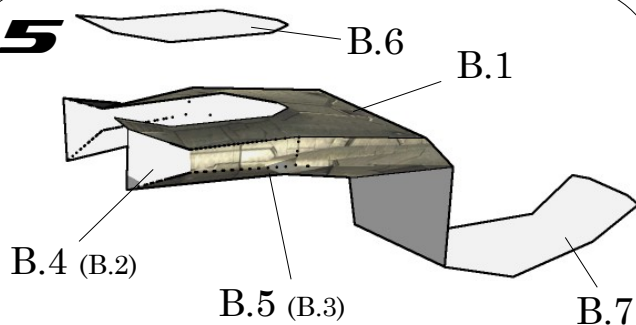
Build part A.8 and attach A.9 and A.10. Prepare the assembly like shown.

**4**



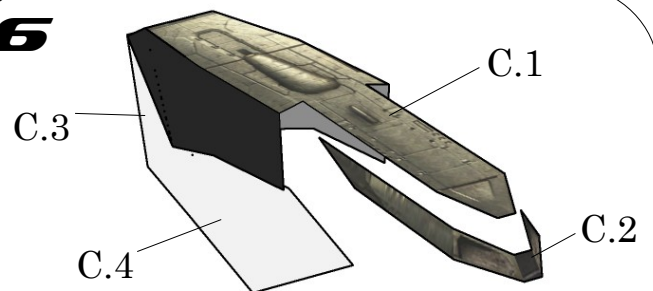
Attach part A.11 to assembly 3 and glue it to No 2. Start where indicated and glue the covering parts closed one after the other.

**5**



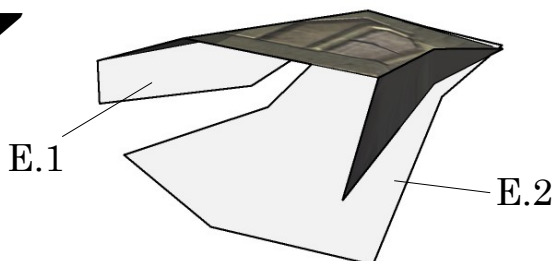
Assemble parts B.1, B.6, B.2, B.5, B.2, B.3, B.7 close the assembly just like in step 4.

**6**



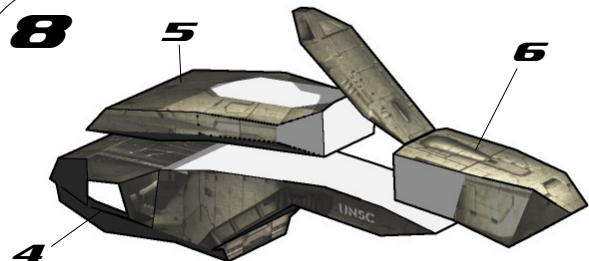
Attach part C.2 to C.1. Glue parts C.3 and C.4 together and attach them to the rest, starting like shown. The part is not a closed box.

**7**



Fold part E.1, then attach part E.2 as shown and close the wing. There remains an opening where it attaches to the fuselage.

**8**

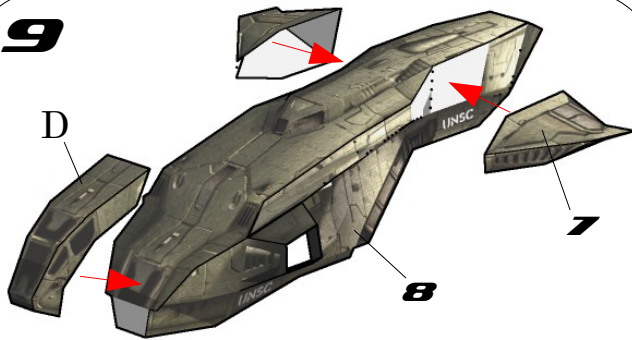


Glue part 5 to part 4. Then attach part 6 while leaving the engine intake folded up. When dry, glue it to the white surface and be careful with the alignment.

# PSF: Dropship series – DH77-TC Pelican

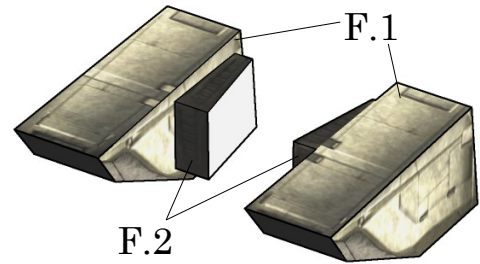


**9**



Attach the wings No. 7 to the white surfaces on the upper rear fuselage and glue the cockpit to the front.

**10**



Assembly F is pretty straightforward. Just don't confuse the engine pods and make sure parts F.2 are attached as shown. I think it is easier without the optional nacelle link covers.

**11**



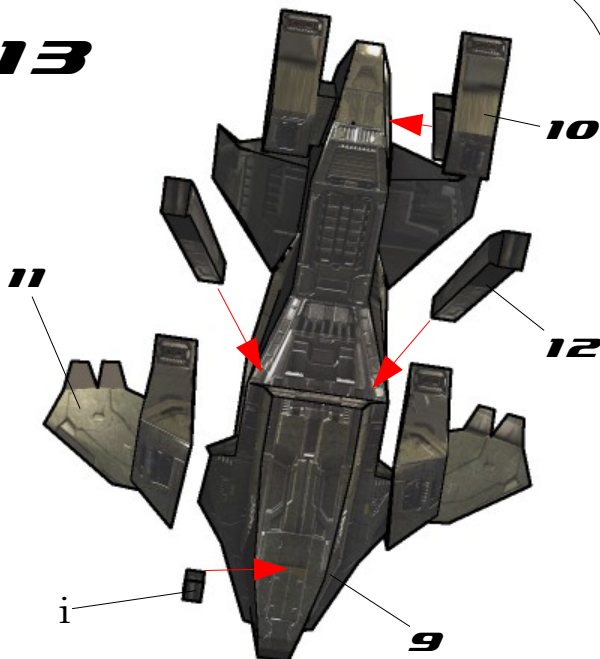
First glue the upper and lower wing together. Then assemble the rest. Close the large cover last.

**12**



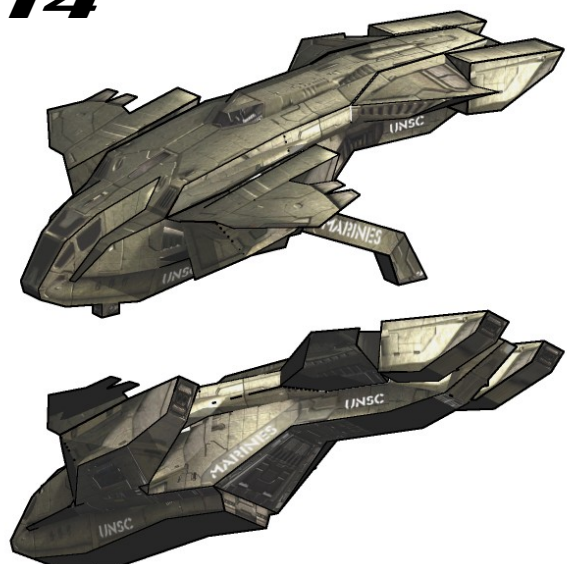
For the landing gear, first attach H.2 to H.1 and Close the part afterwards. Parts i is just a box :)

**13**



Attach the remaining parts to the fuselage. If you are building the pelican with gear down, it attaches to the corners of the rear face of the fuselage and behind the bend on the bottom surface (see red arrows).

**14**



Congratulations! You have finished your Mini Pelican. Stay tuned for the next in the dropship series!