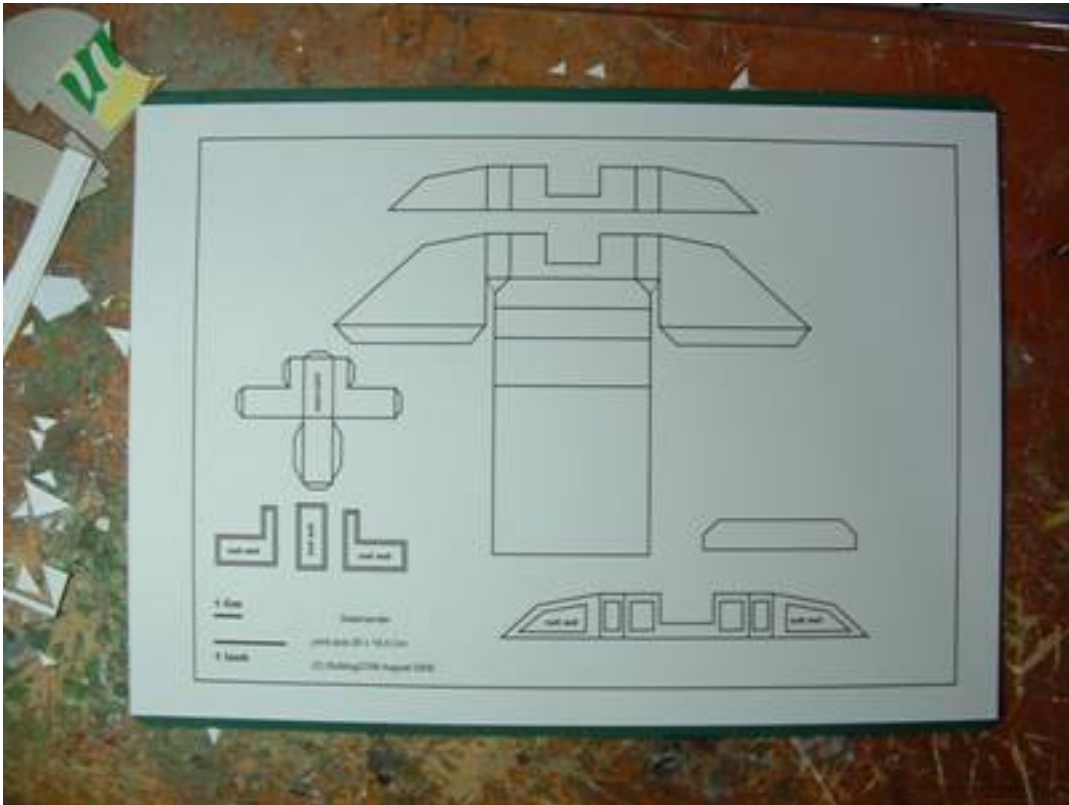


SALAMANDER

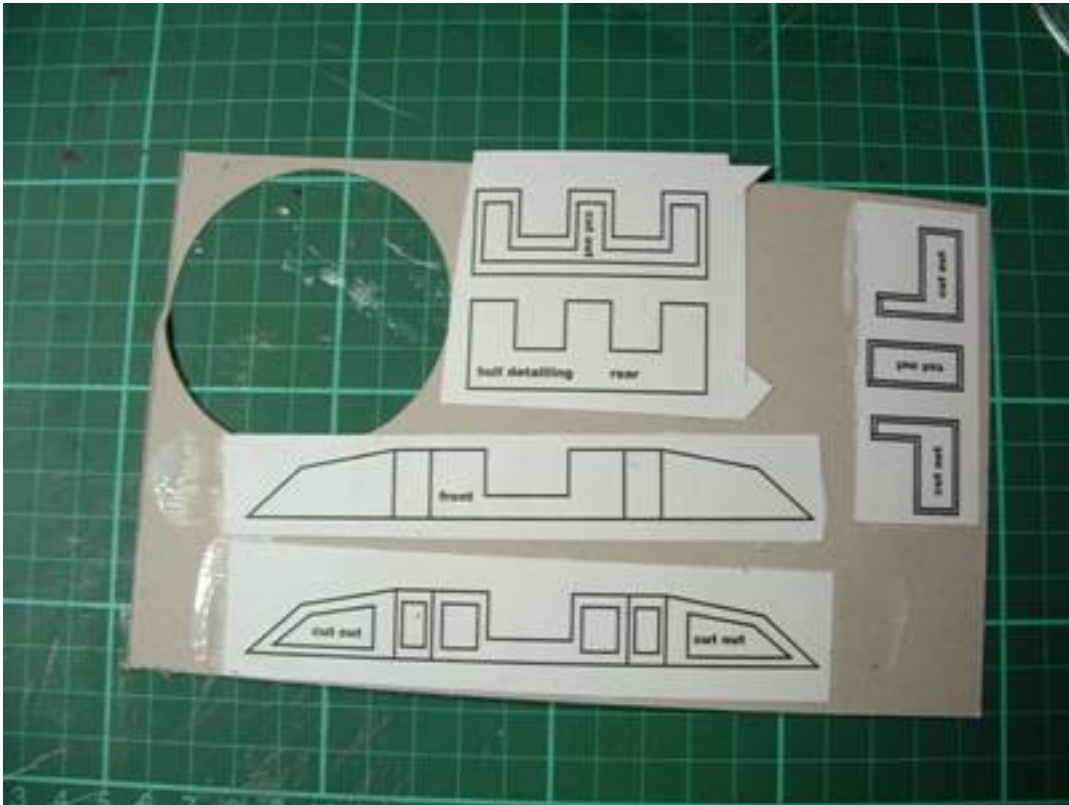
“How to”

First step print the plan on medium paper or light cardboard (like “Bristol” for exemple)

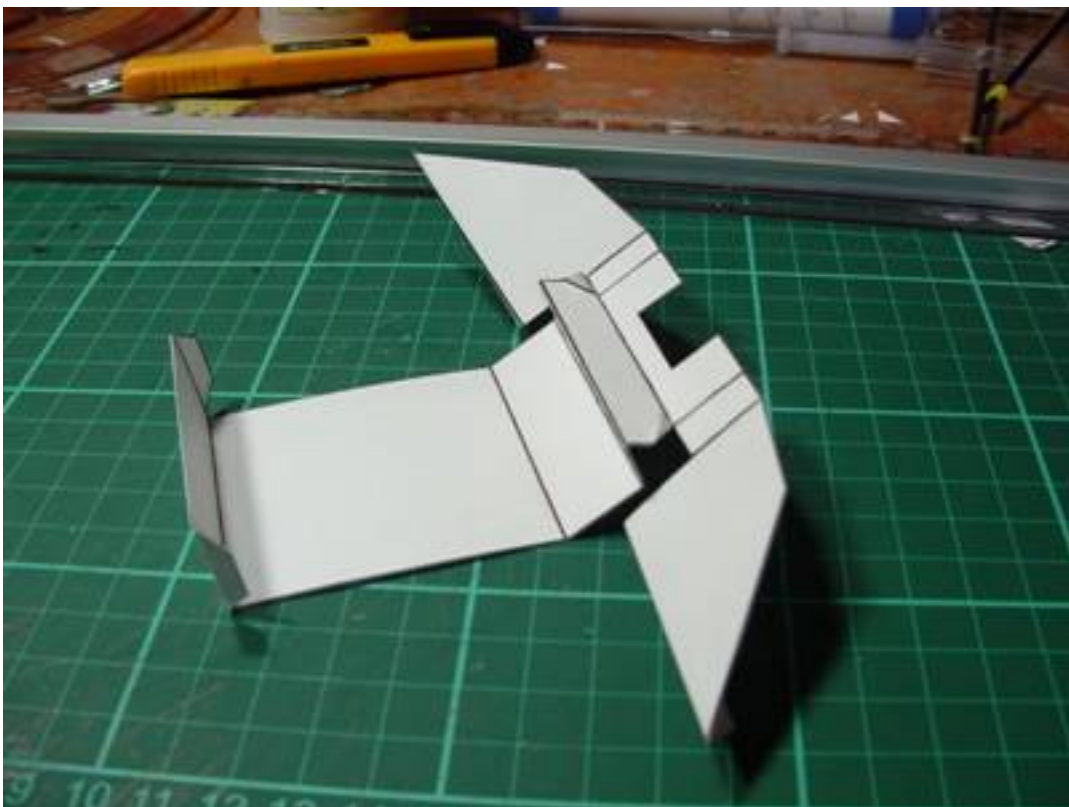


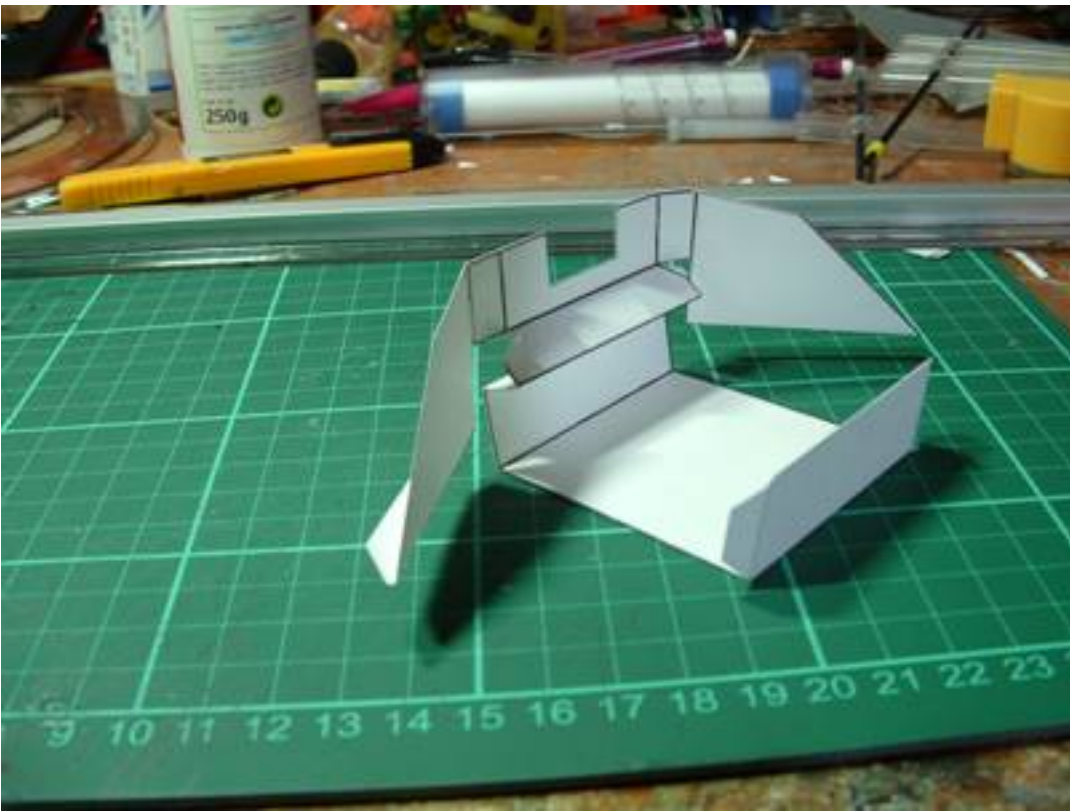
Then cut the different part, except inside of detailing pieces, and glue this detailing part on cardboard (like cereal boxes, many thanks Mr Kellog...)





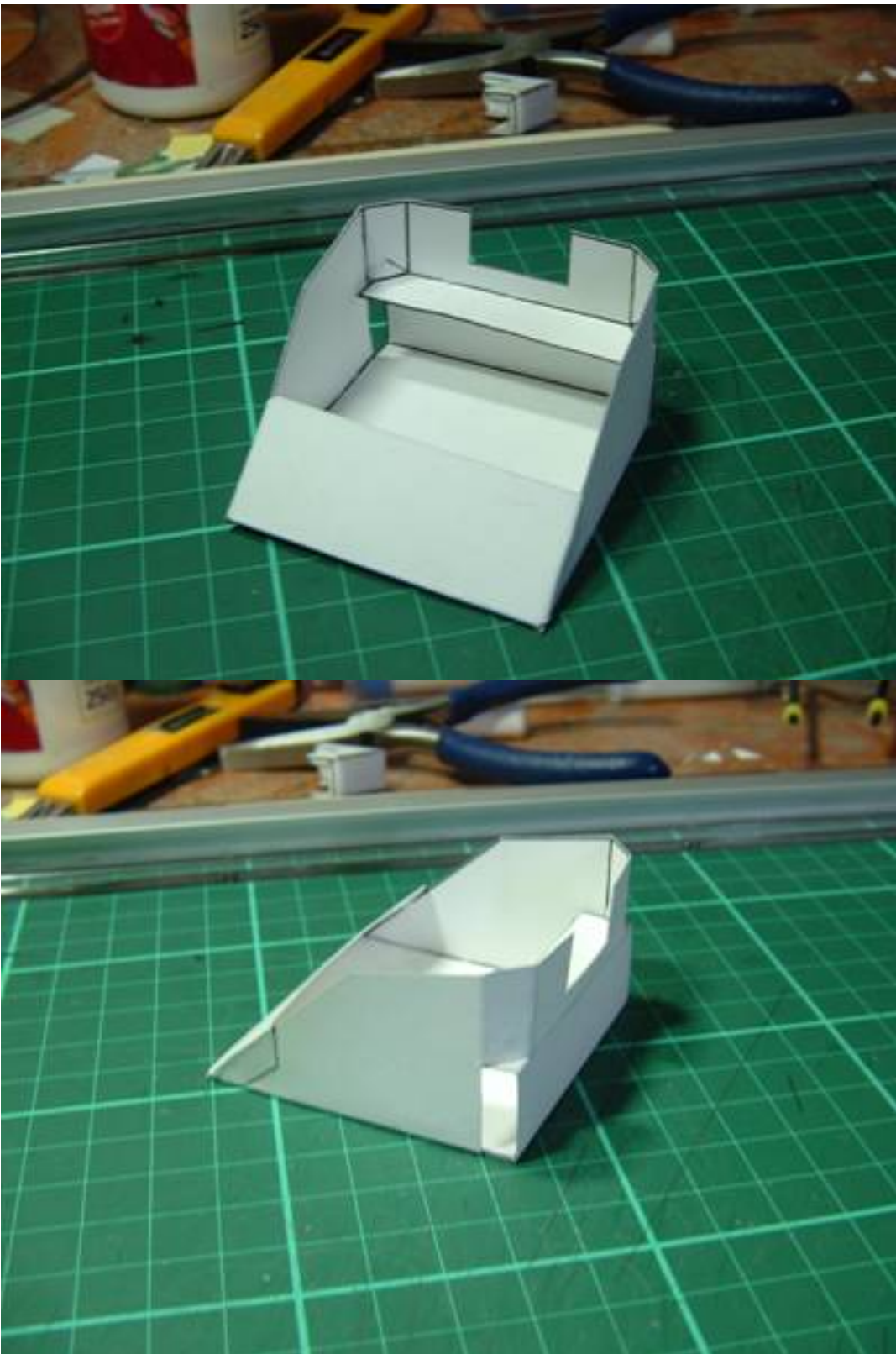
Fold the main body, as few pictures are better than many words, have look down there to see how to fold.





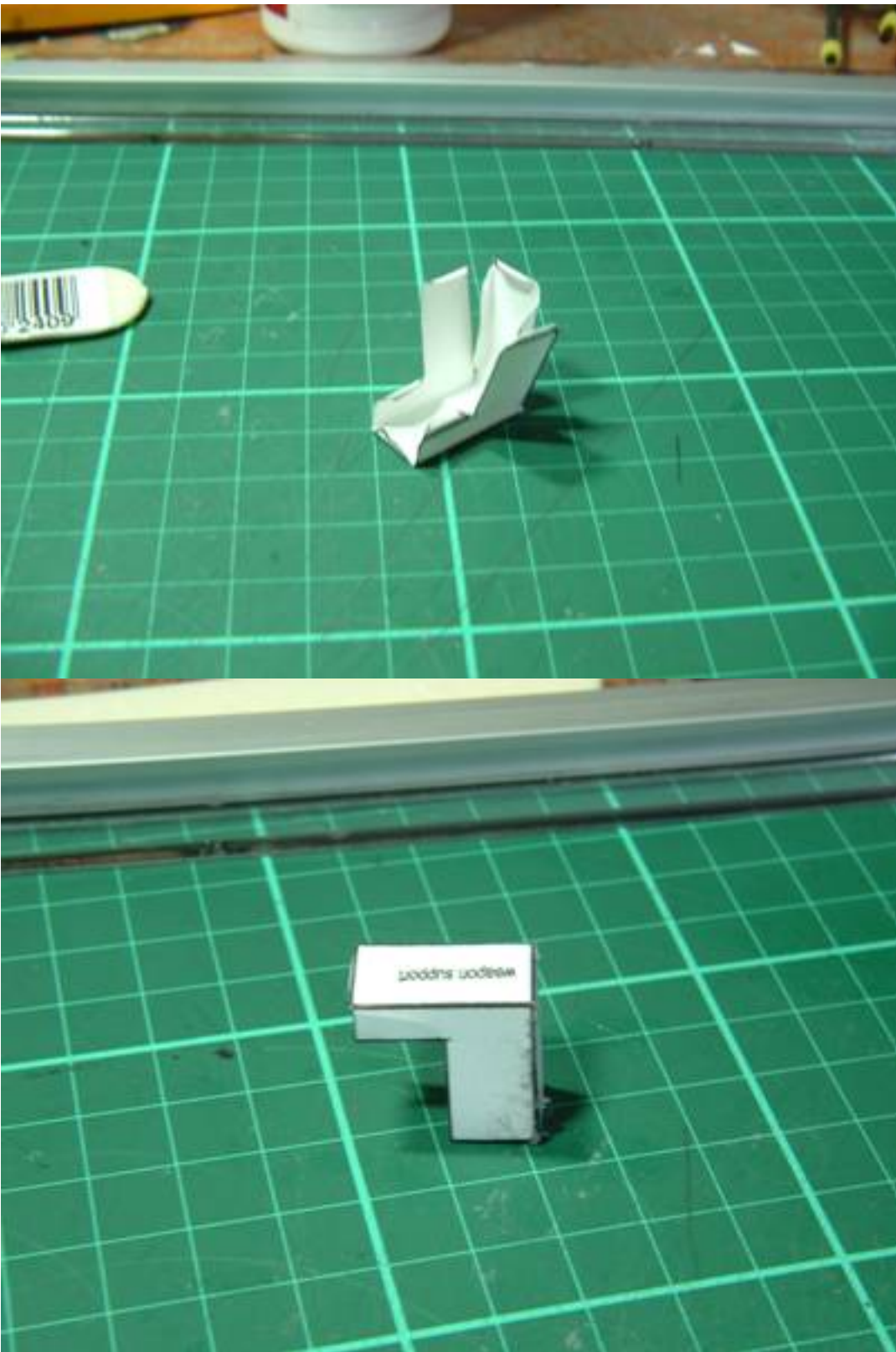
Then glue the tabs, attention : the tabs are planned to be glued on the outside (they will be invisible when the hull will be inserted in the griffon chassis).



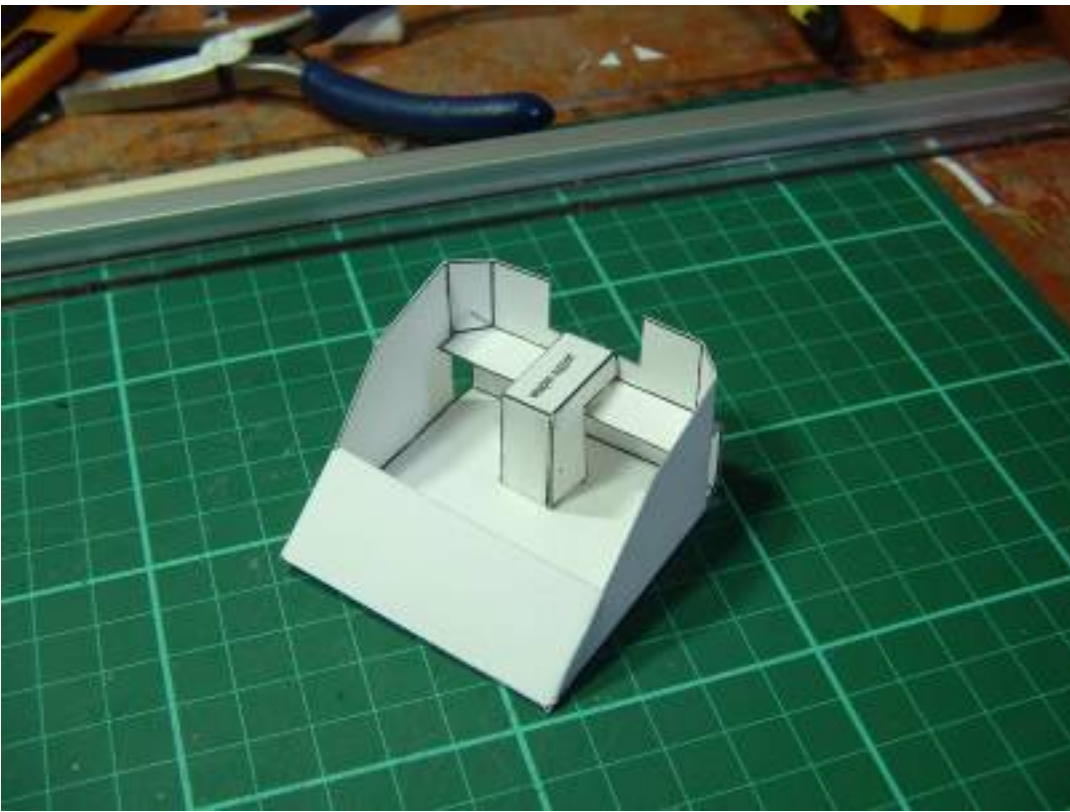


That's what you should obtain.

Next fold and glue the weapon support.

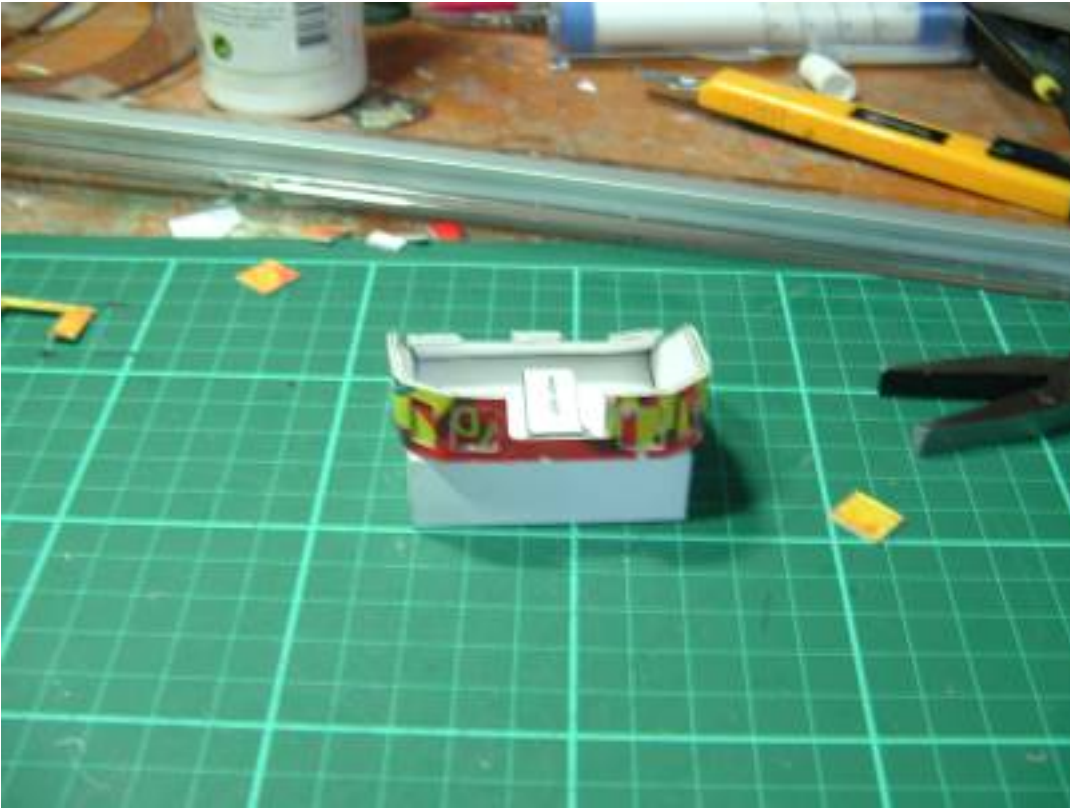


And glue the support in the main hull



The next step is to cut the details, cut out the inside before cutting the parts themselves, it's more easy to handle. Fold and glue in place, you should obtain the following

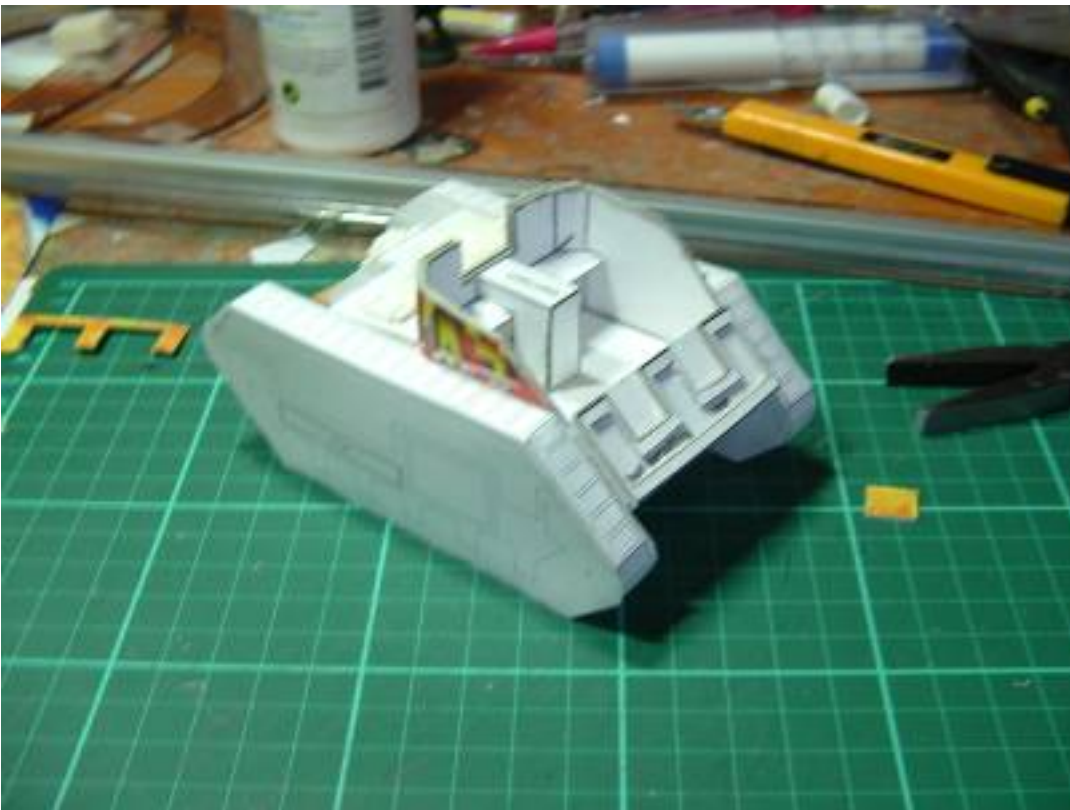




Build your griffon and insert the hull you've just built







Add weapon (here an autocanon from Forgeworld), and enjoy





Pictures of the original model
- **Scout version**



Model painted by Tony Cottrell



Model painted by Tony Cottrell

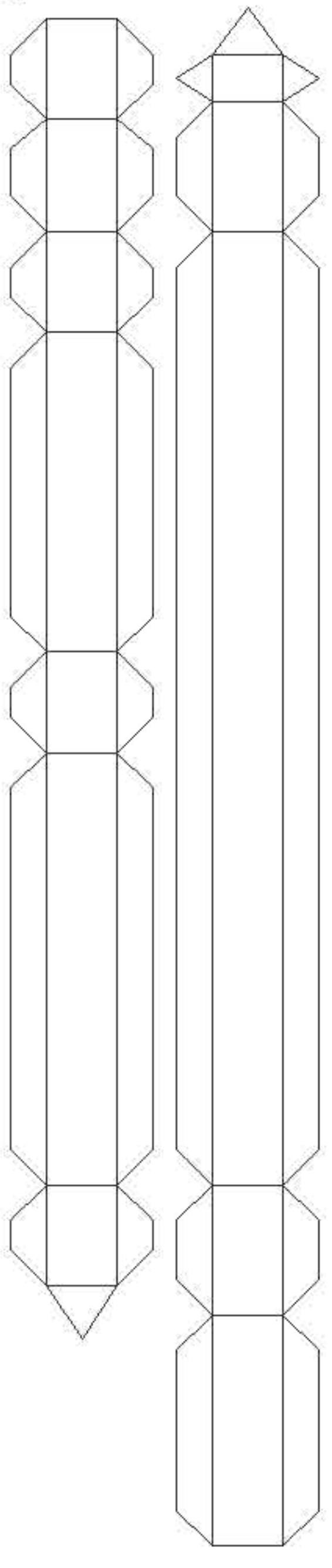
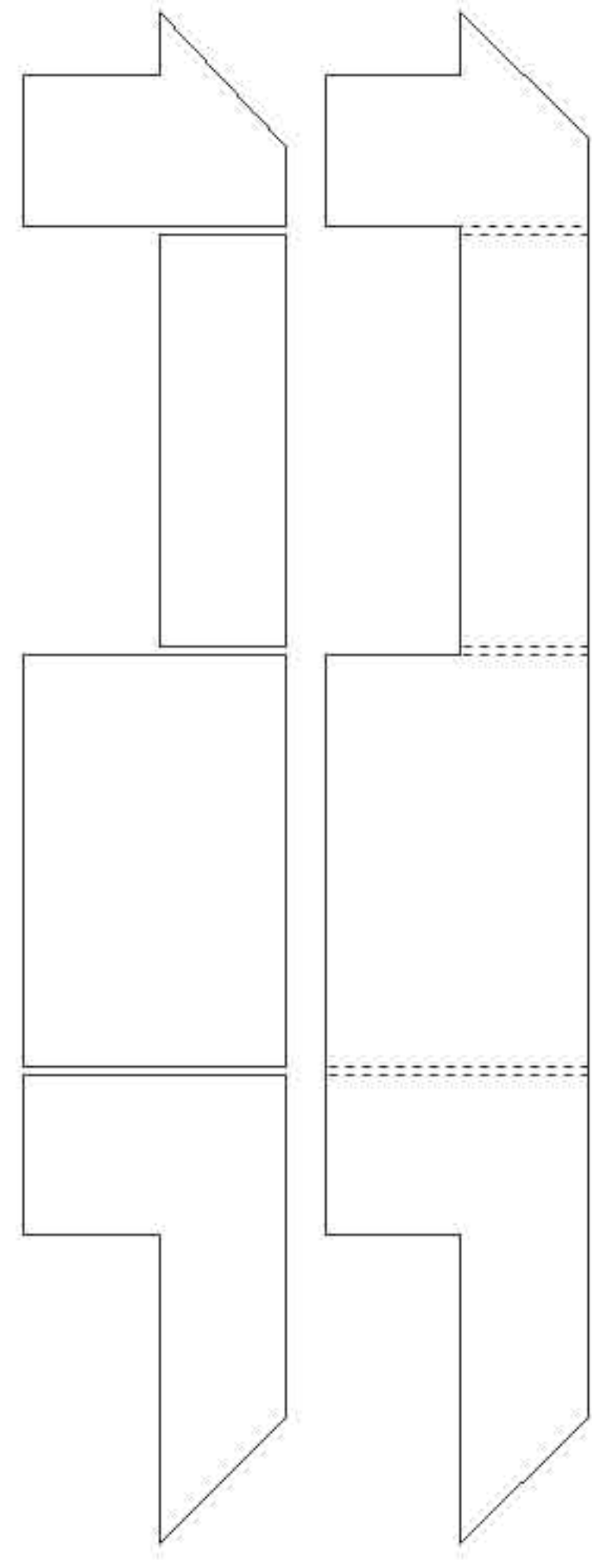
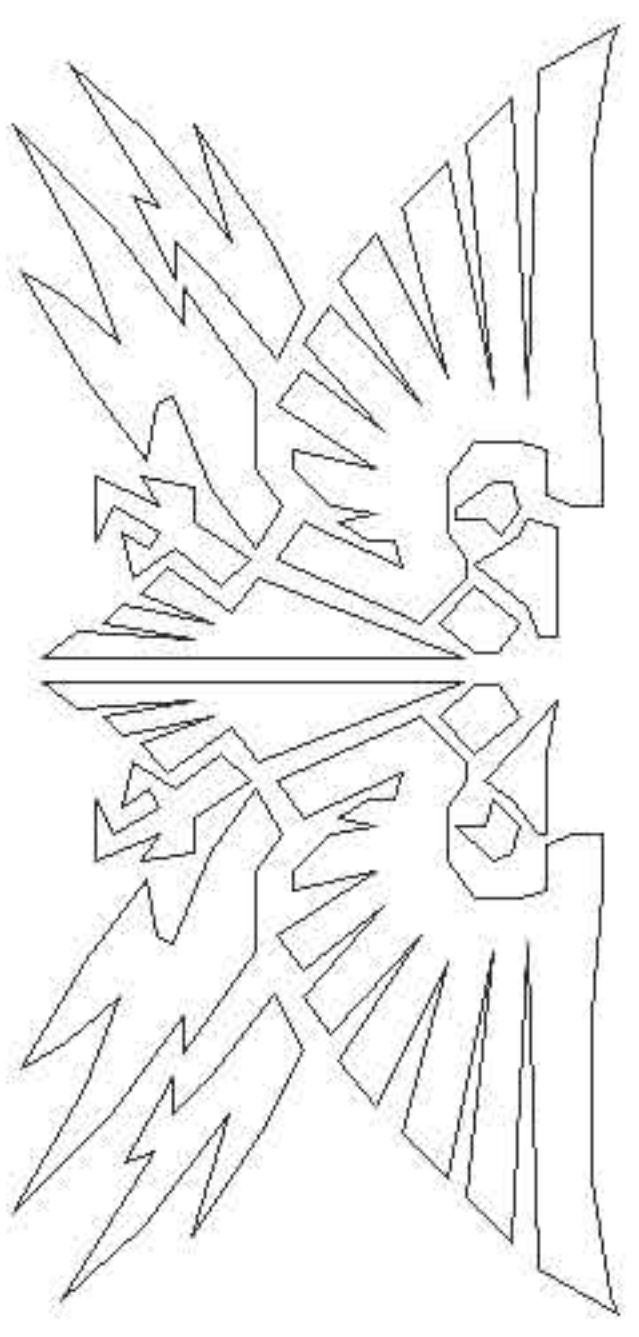
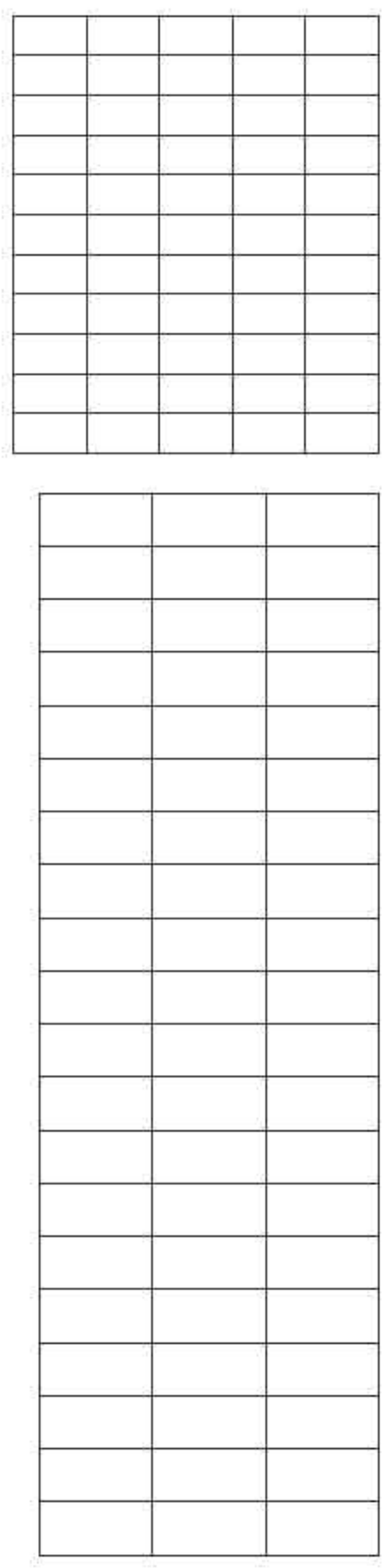
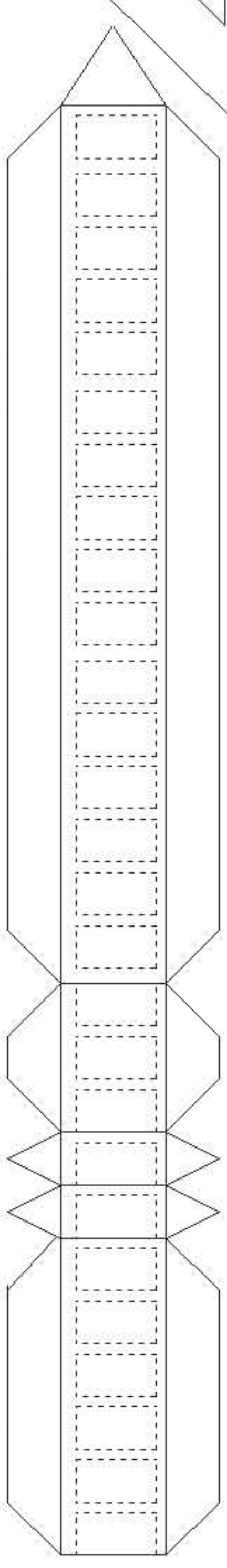
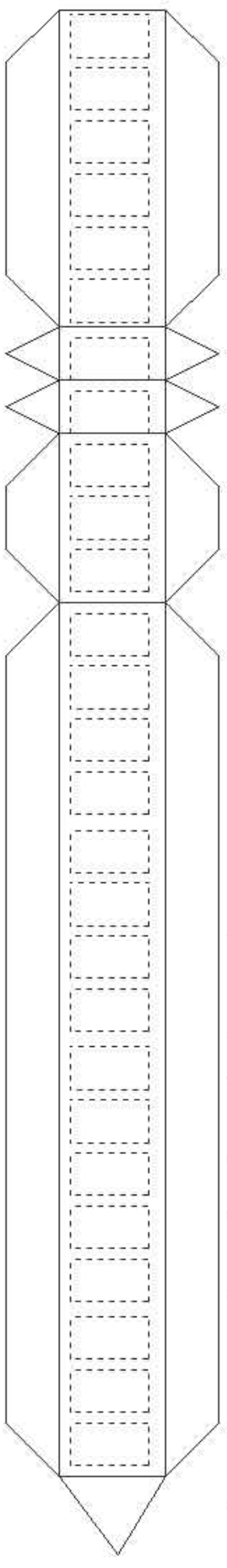
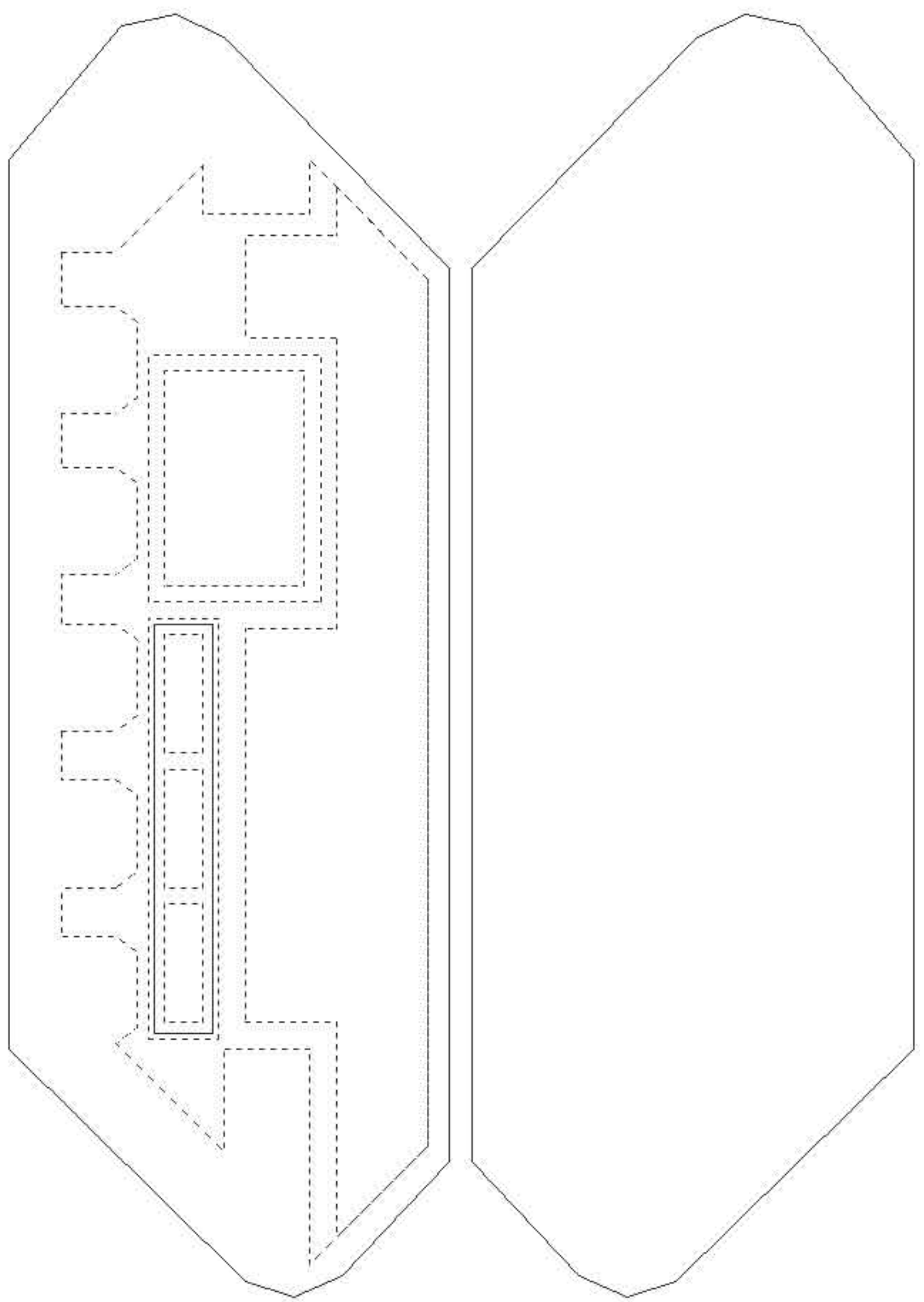
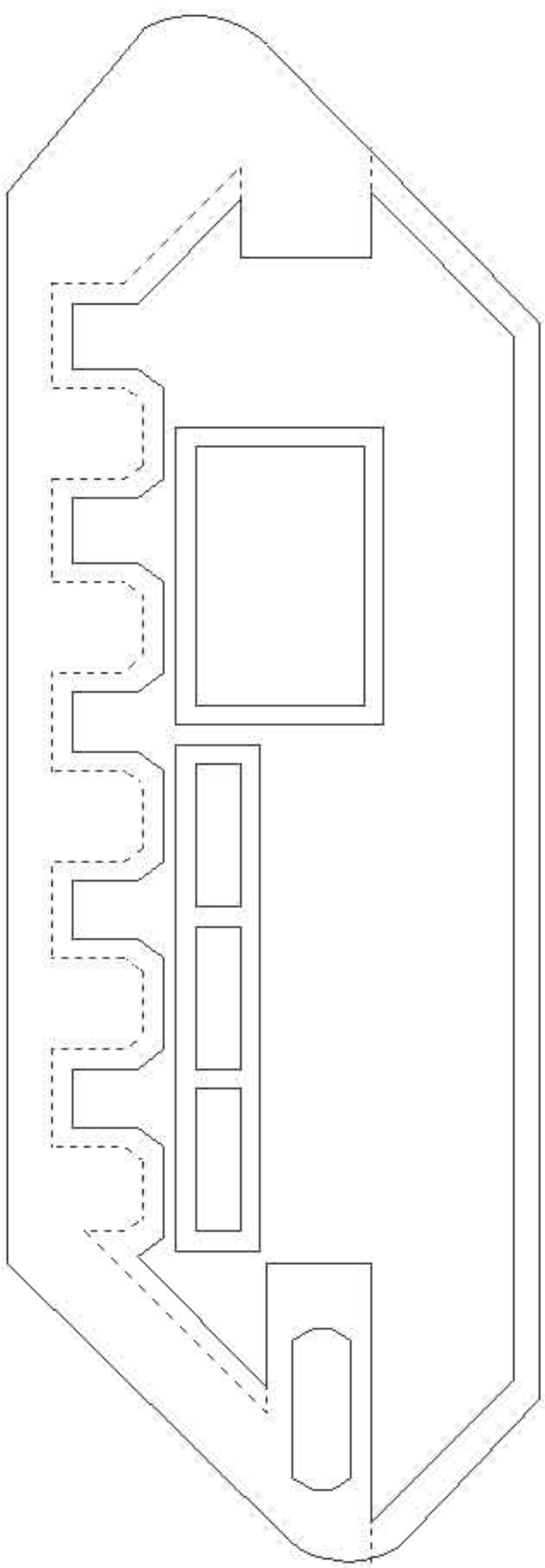
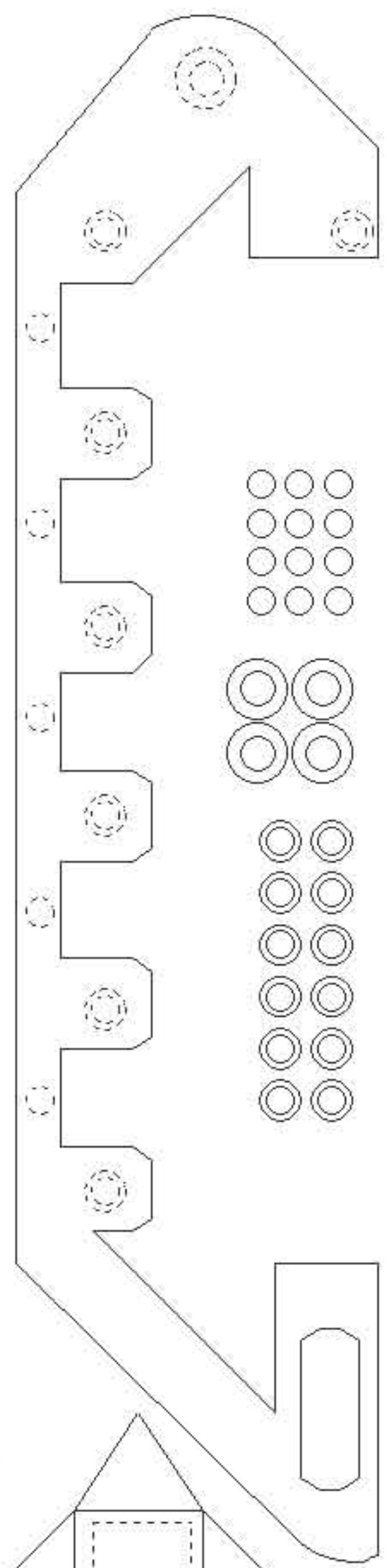
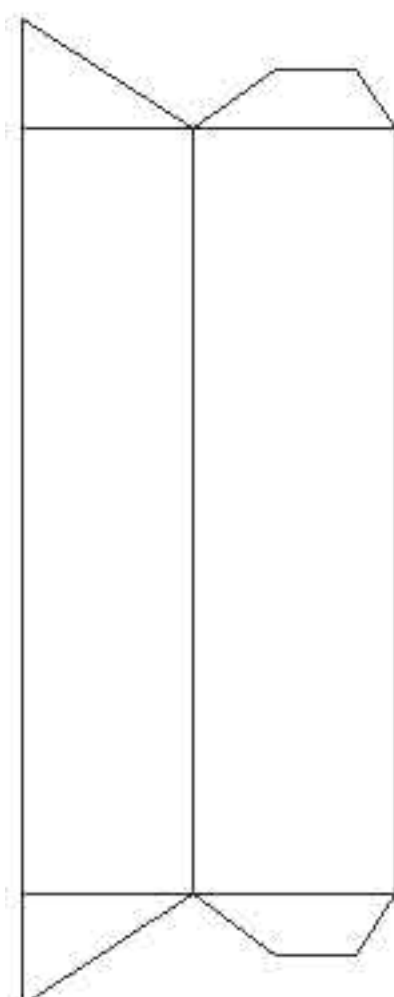
- **Command version**

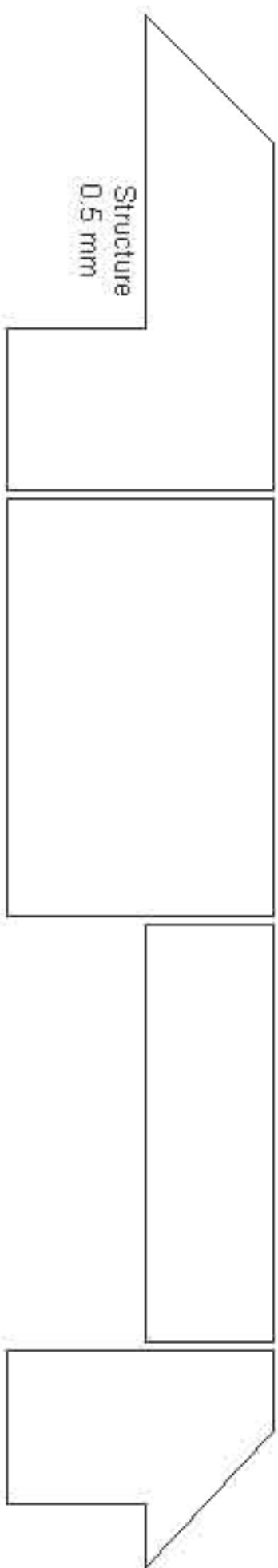
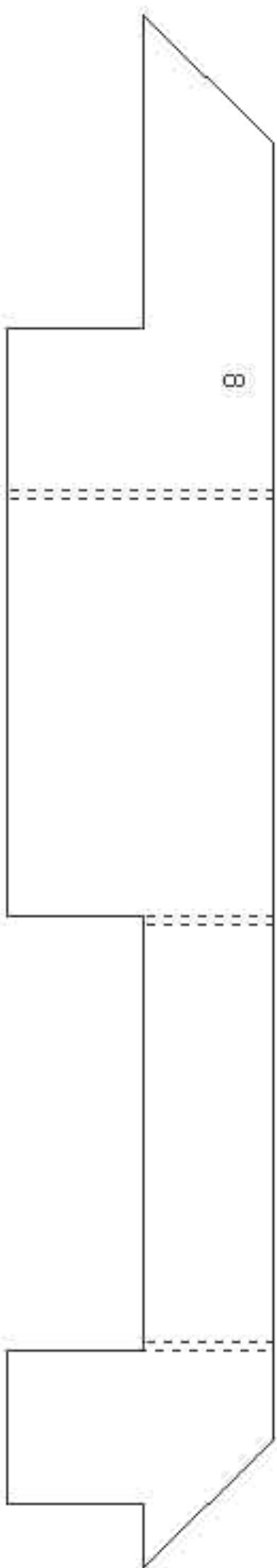
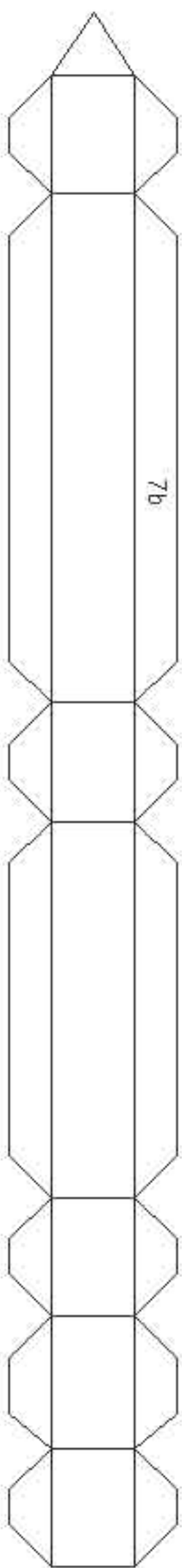
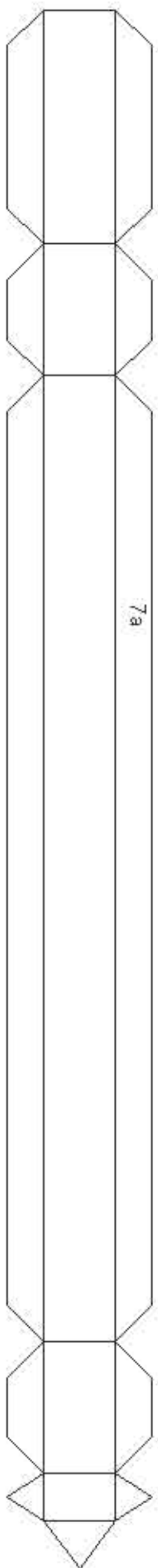


Model painted by Tony Cottrell

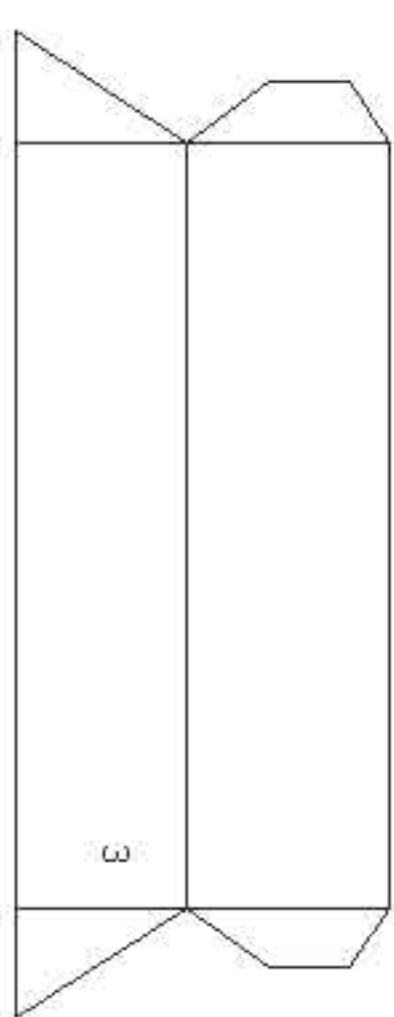
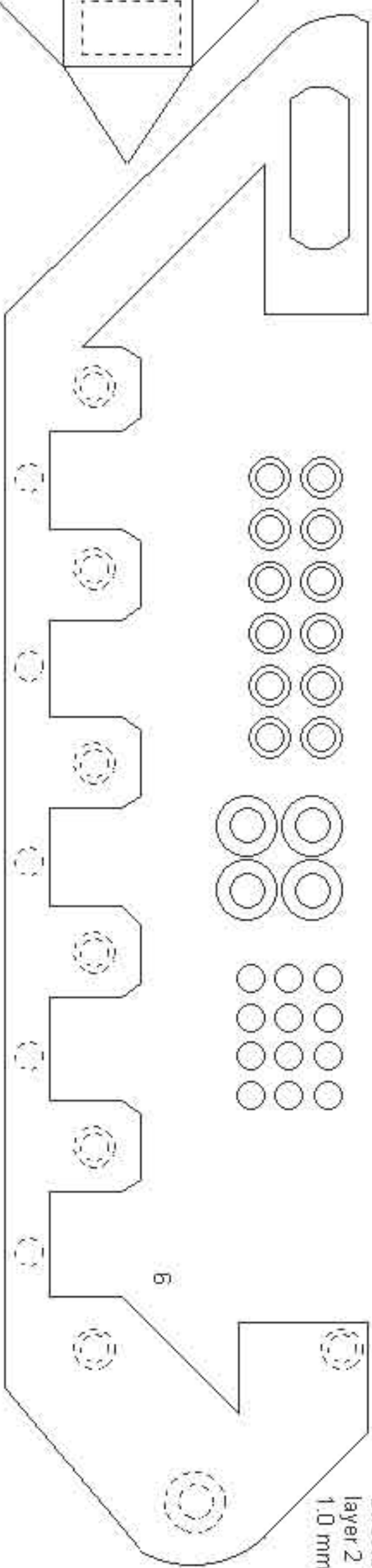
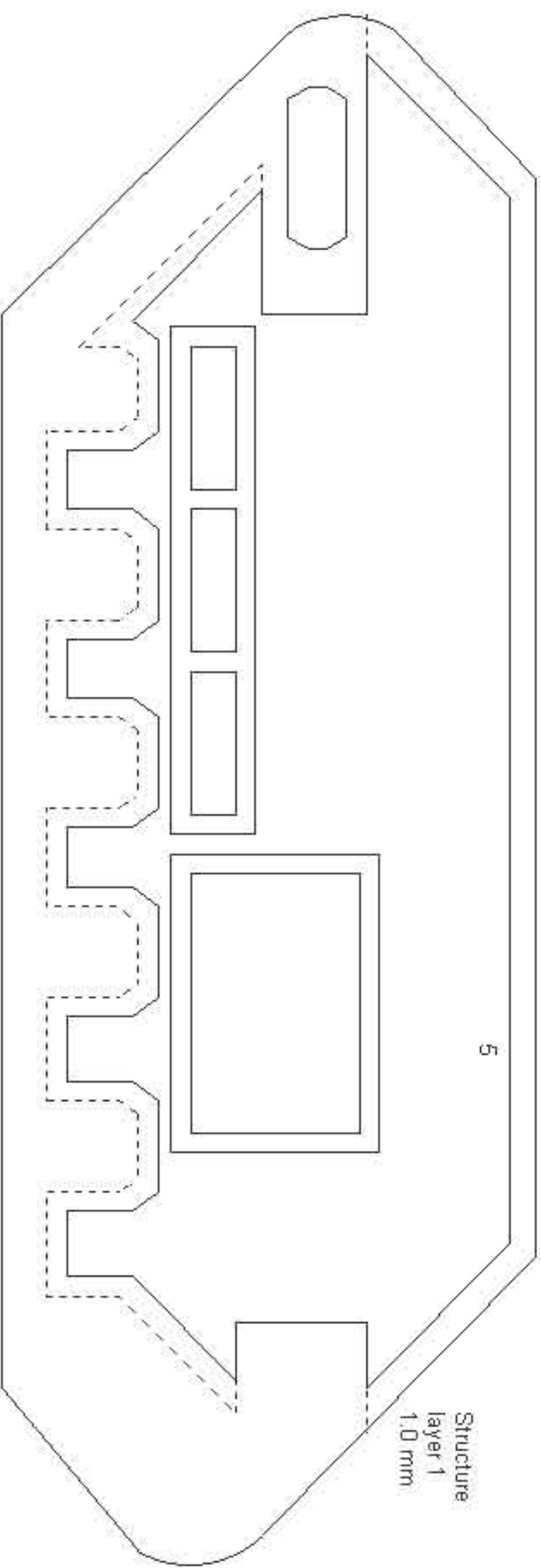
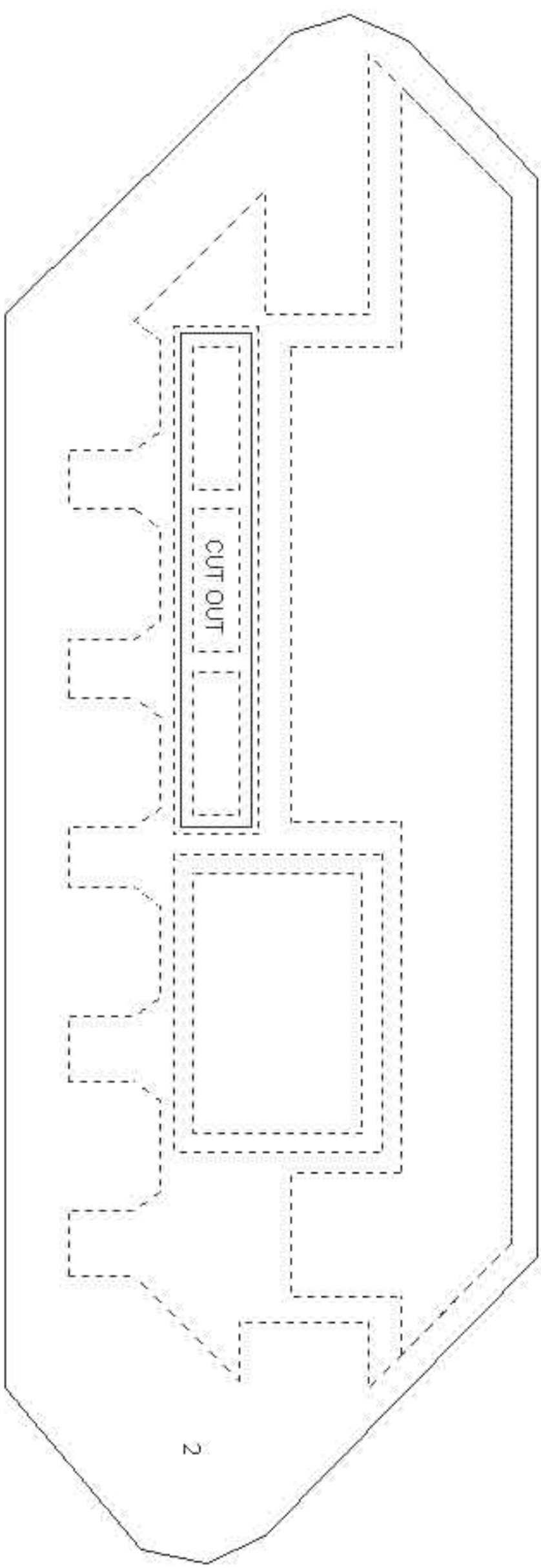
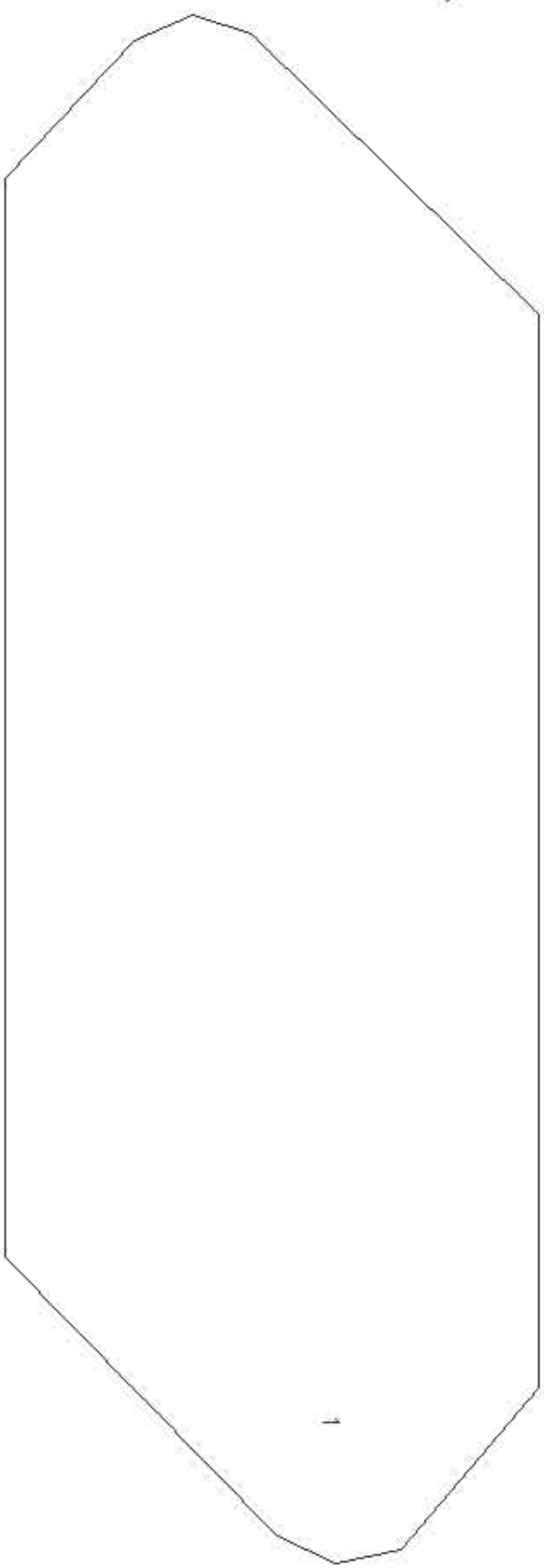
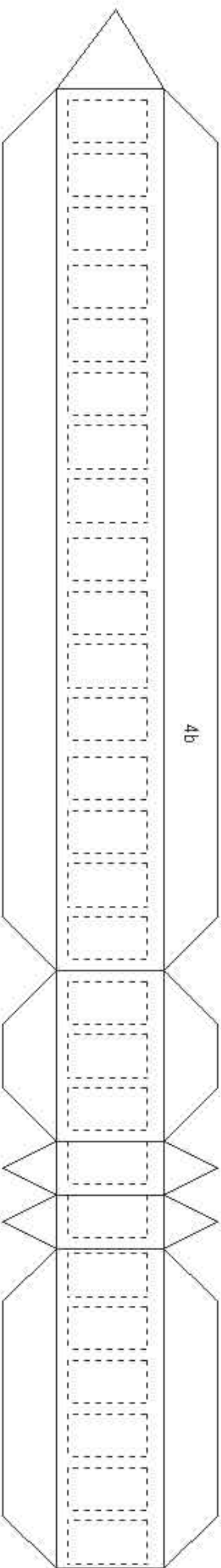
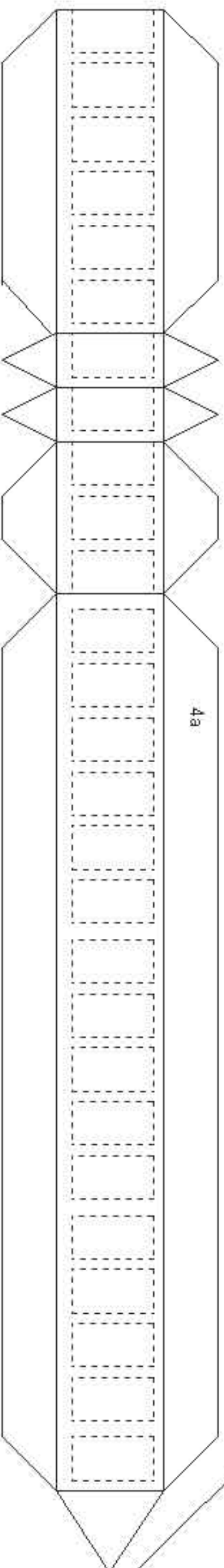
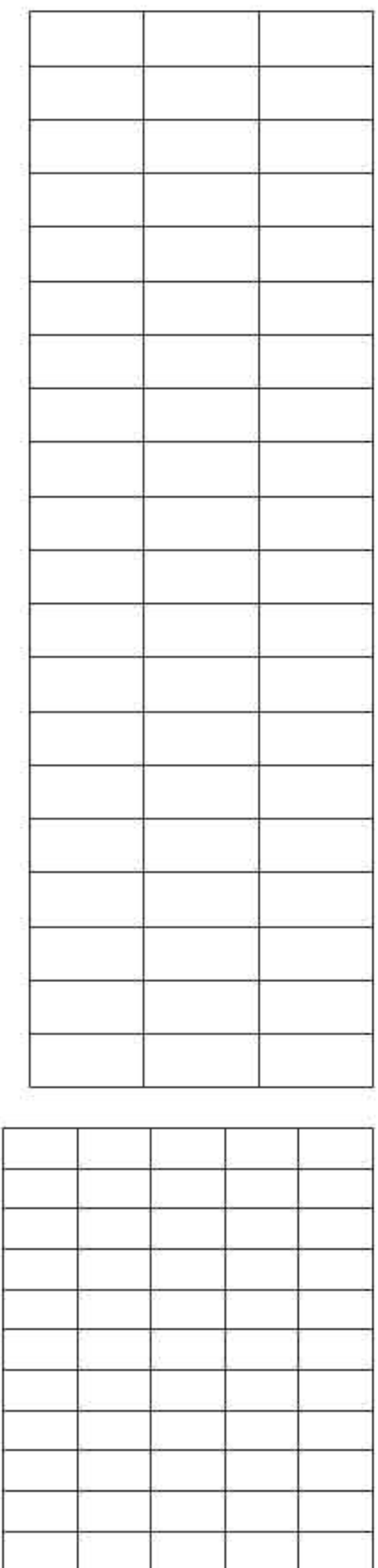
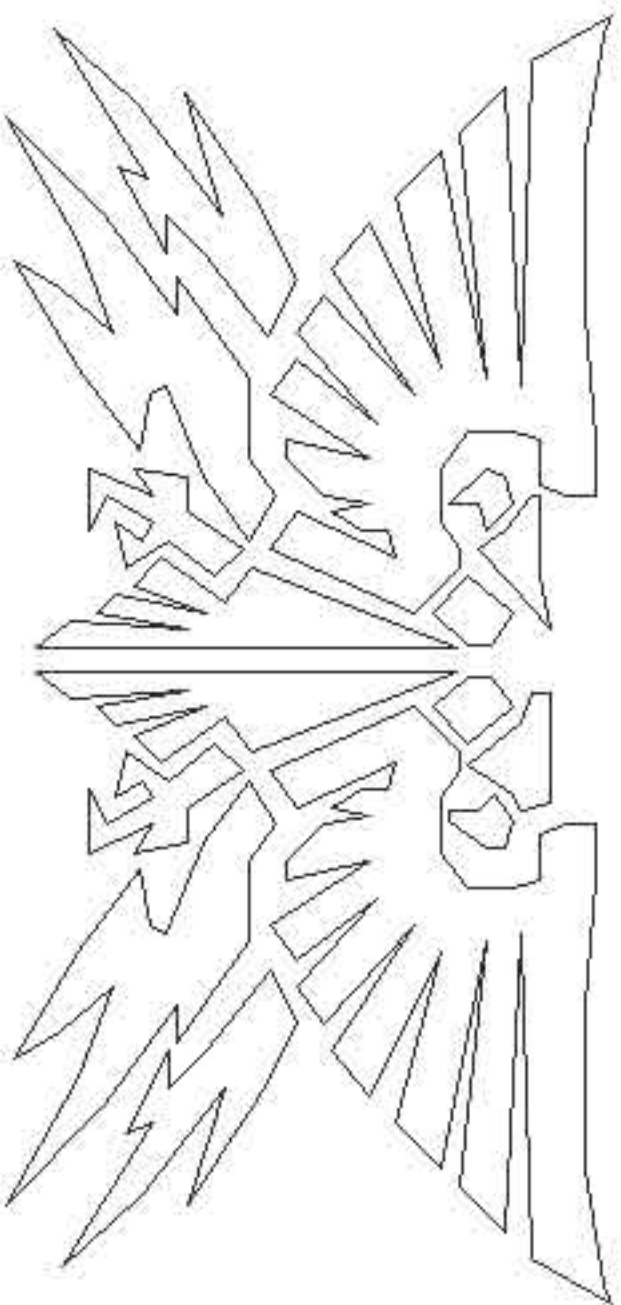


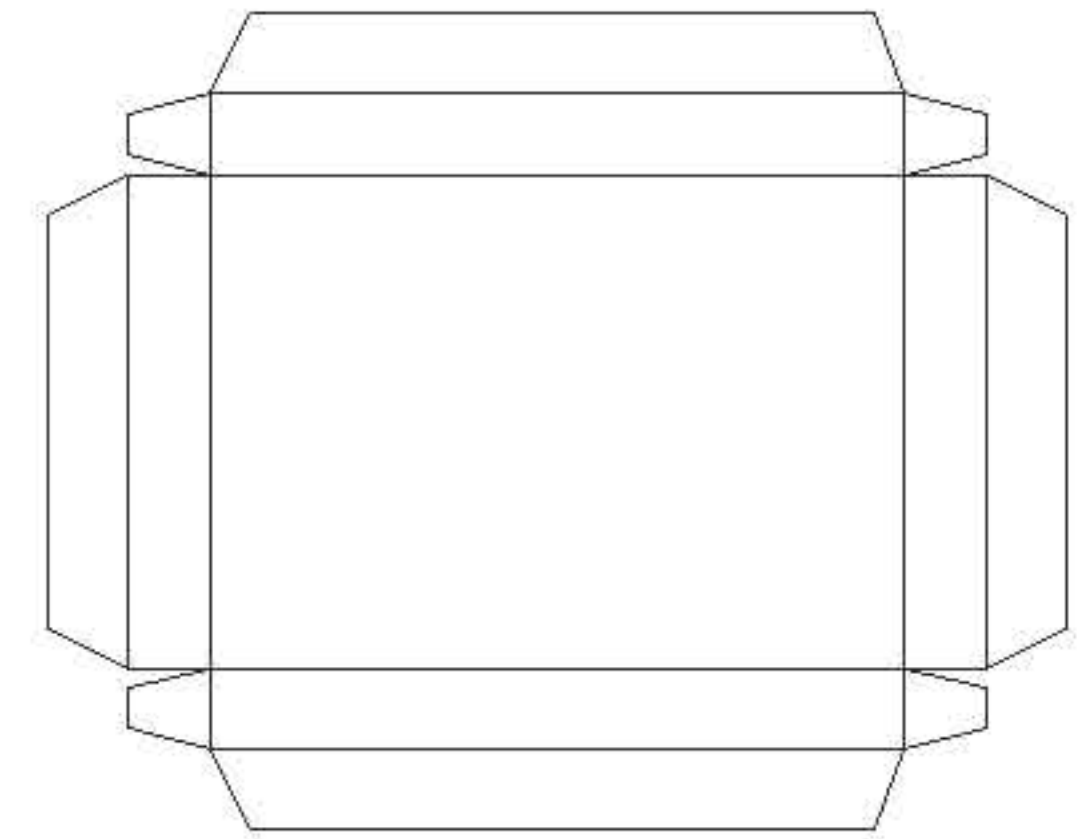
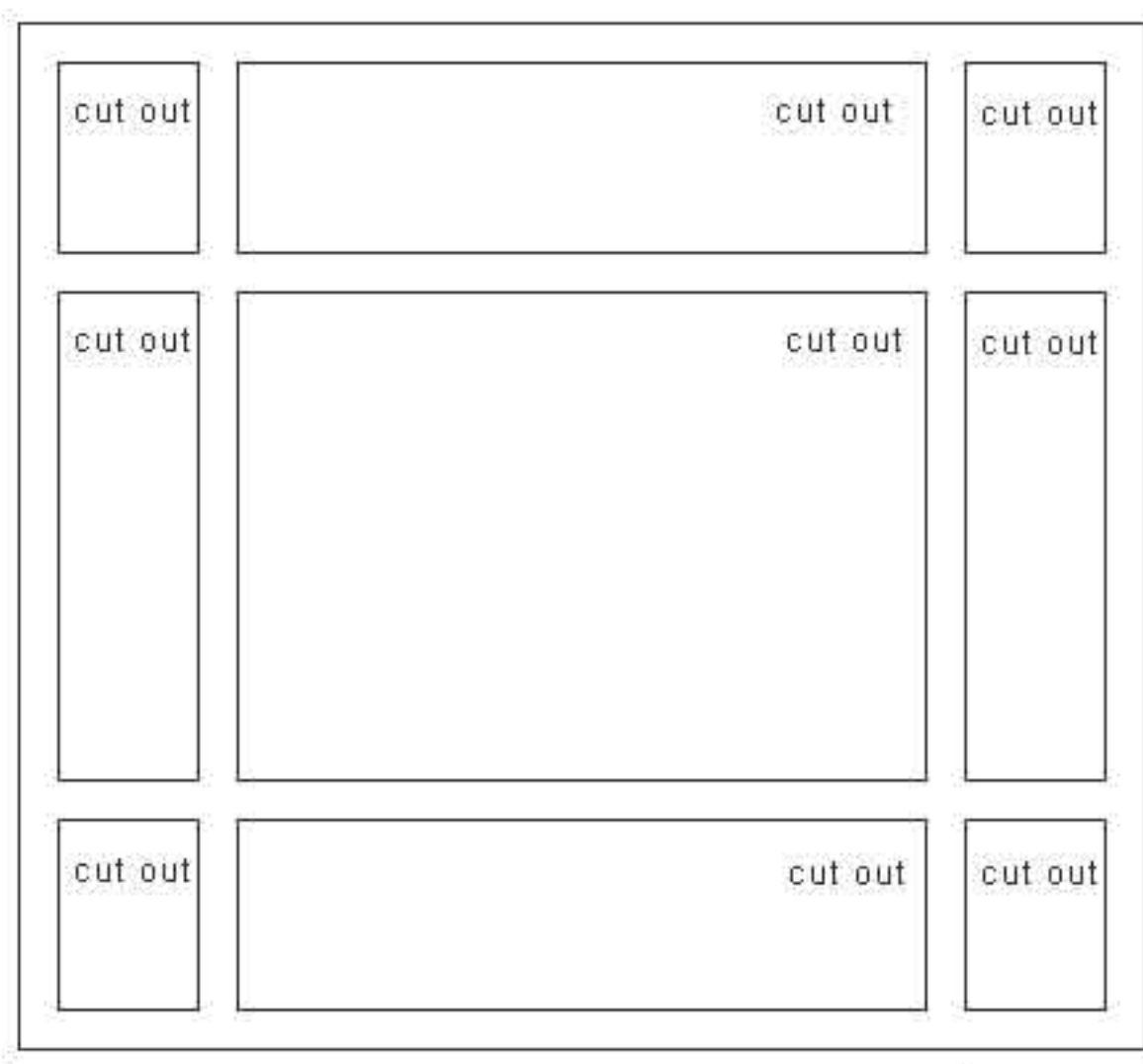
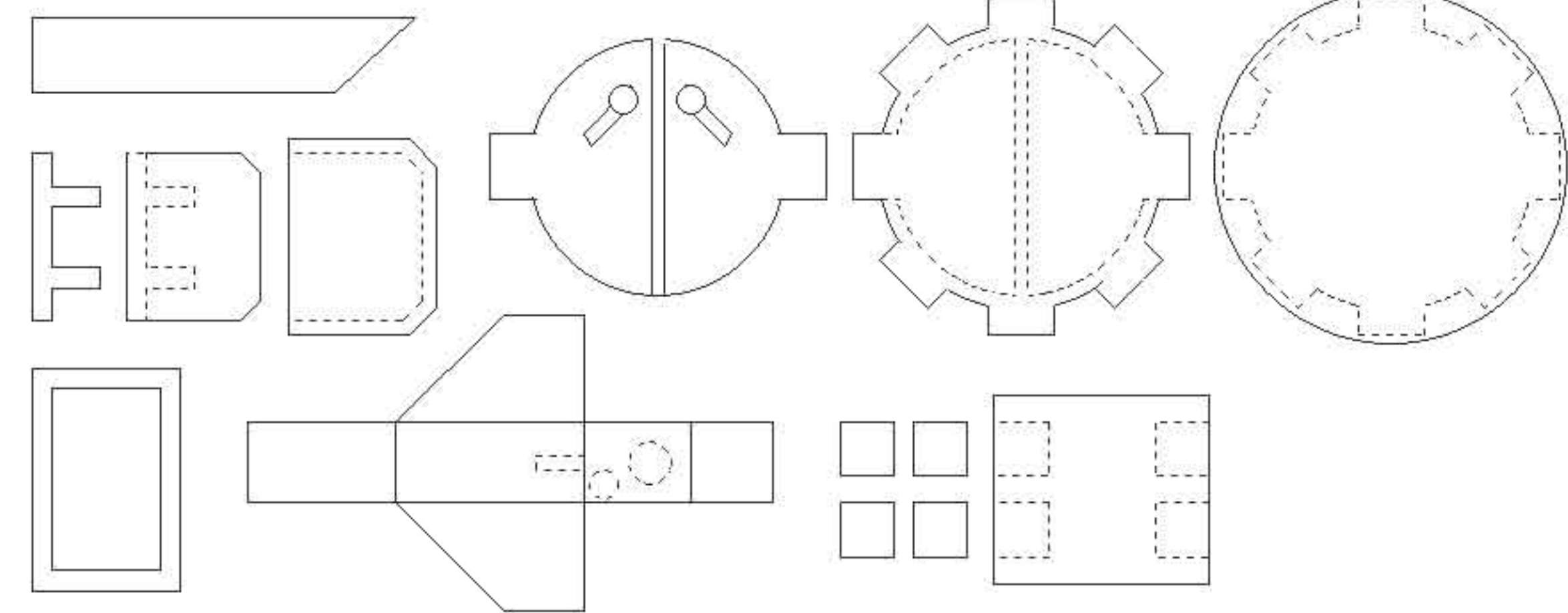
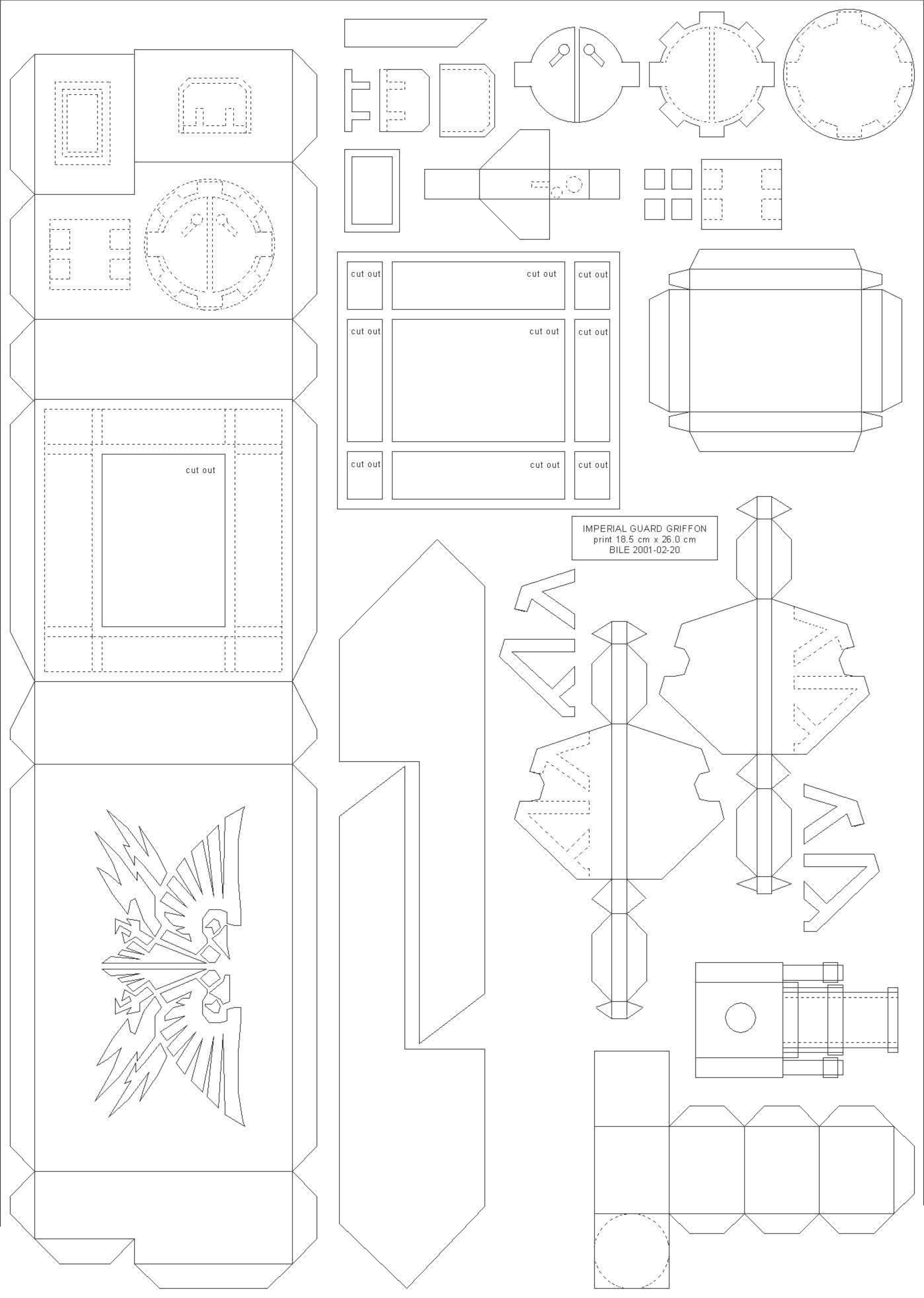
Model painted by Tony Cottrell



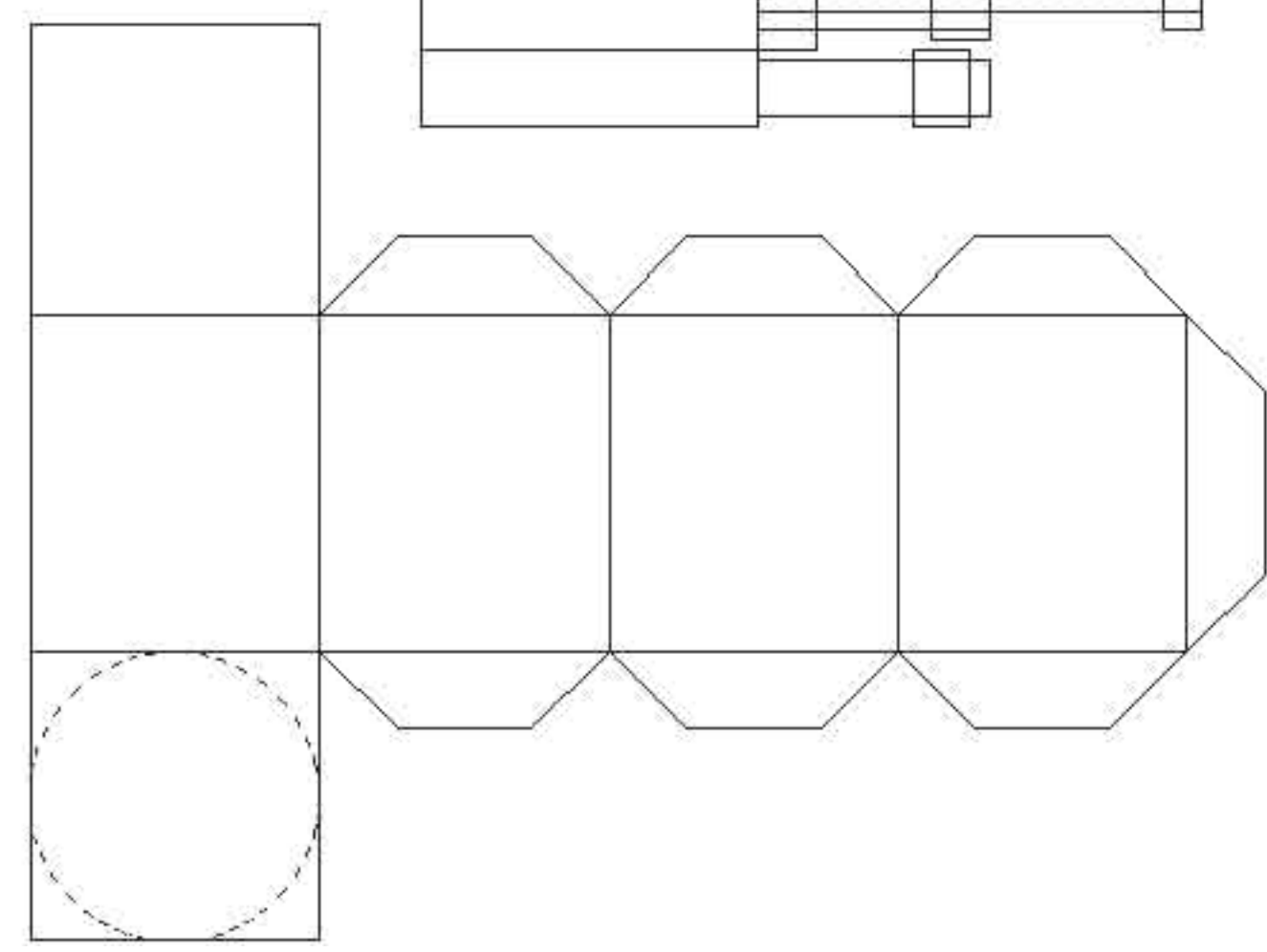
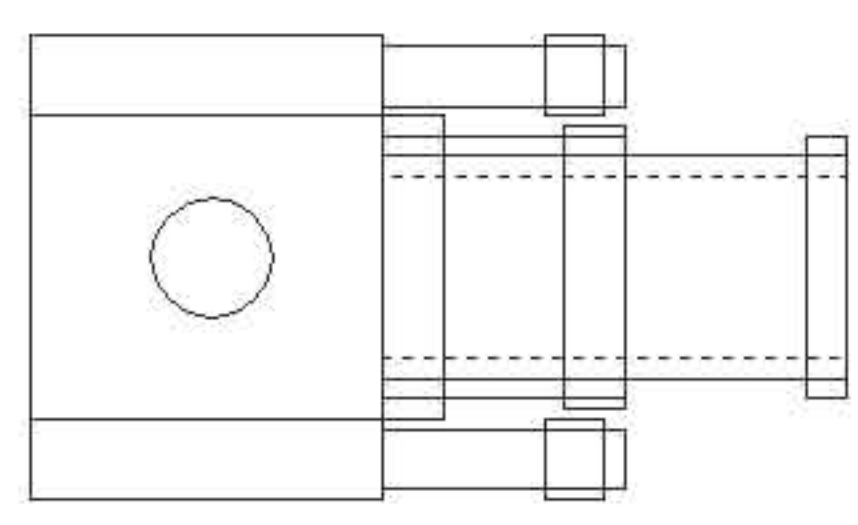
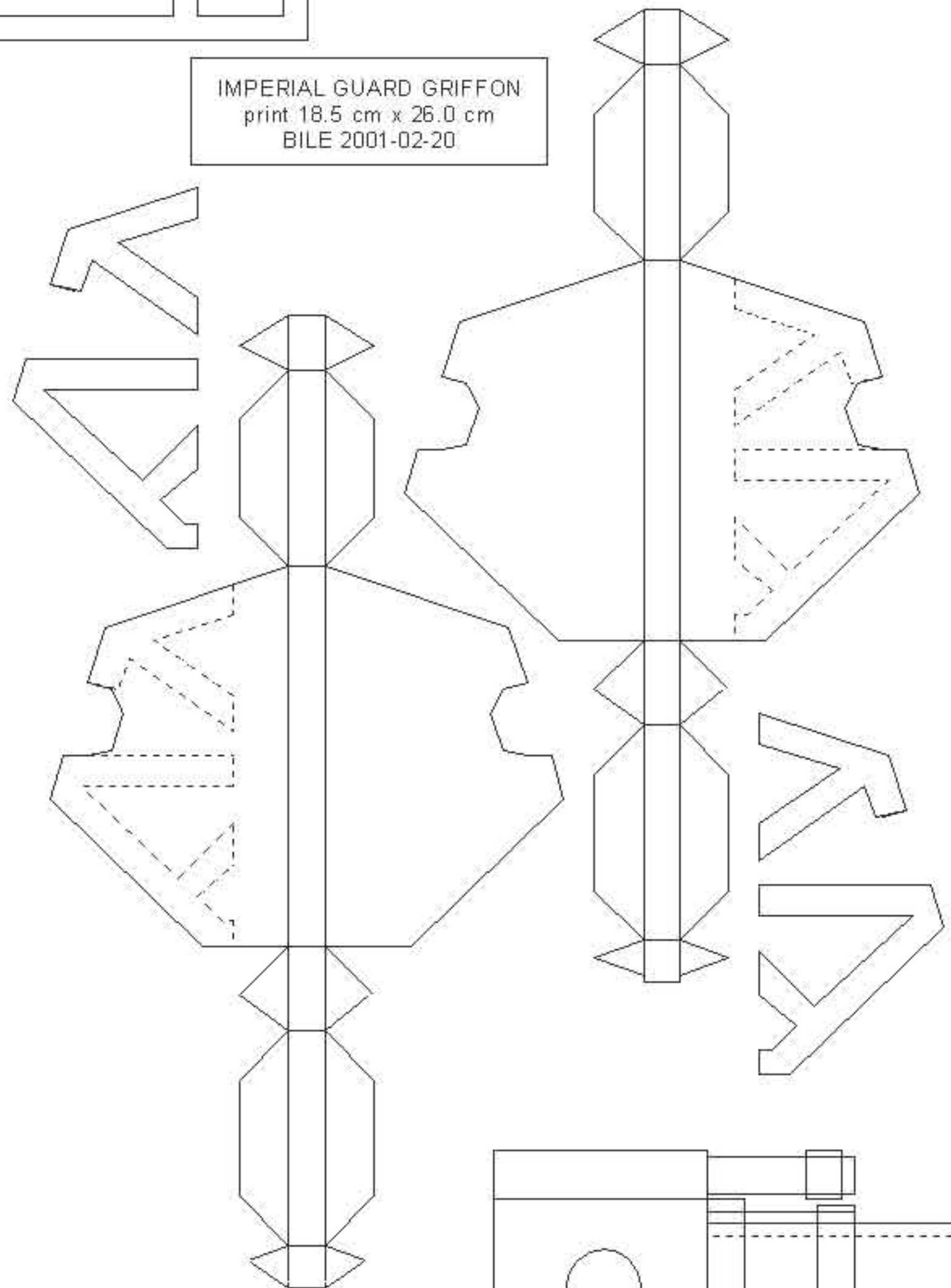
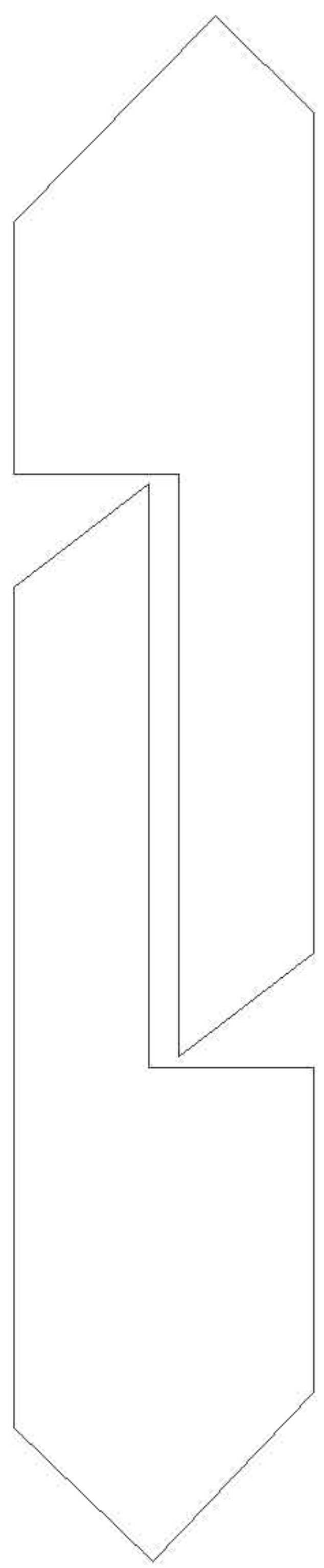


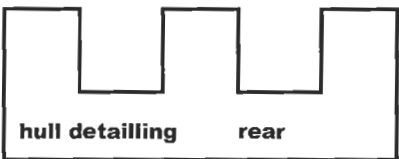
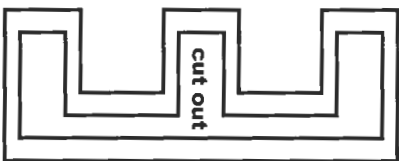
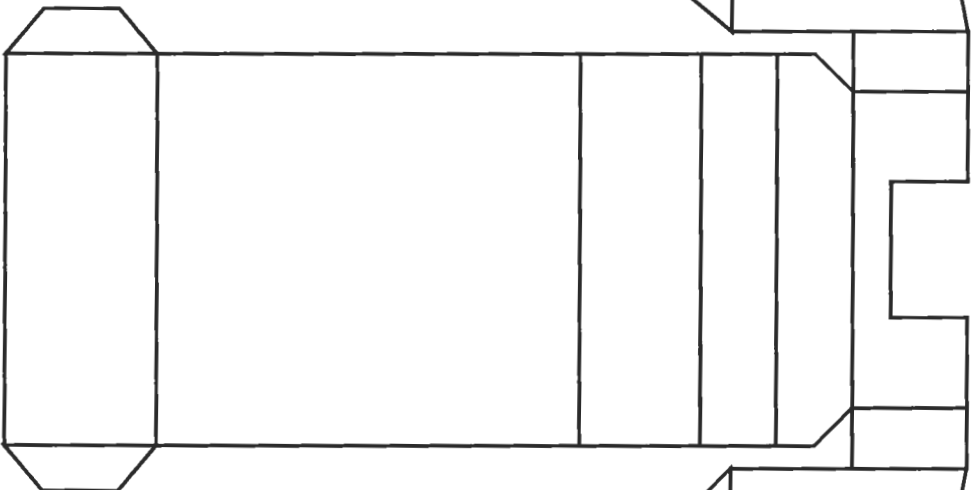
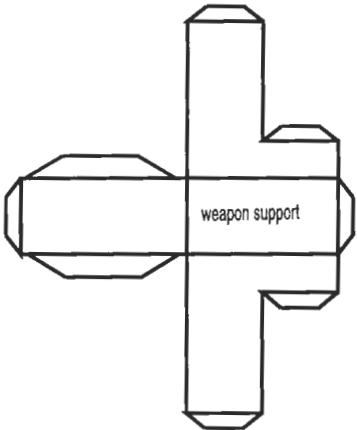
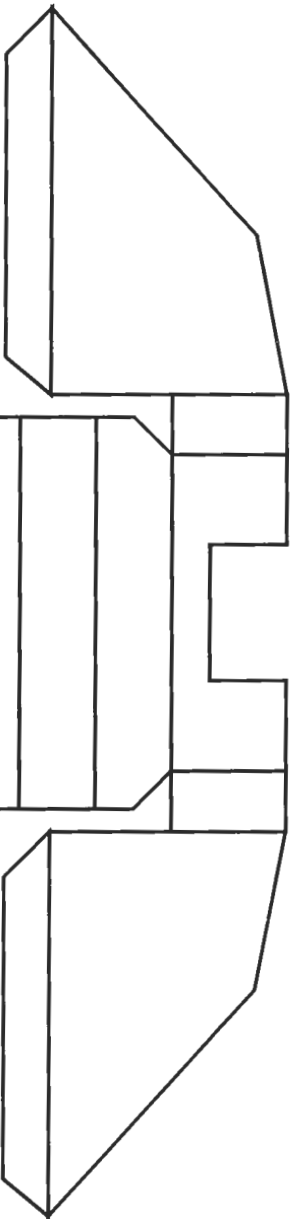
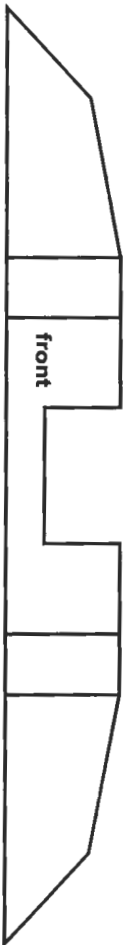
Chimera Track
Printing Size 26.0 cm x 18.5 cm





IMPERIAL GUARD GRIFFON
print 18.5 cm x 26.0 cm
BILE 2001-02-20





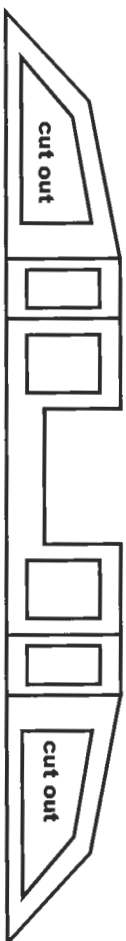
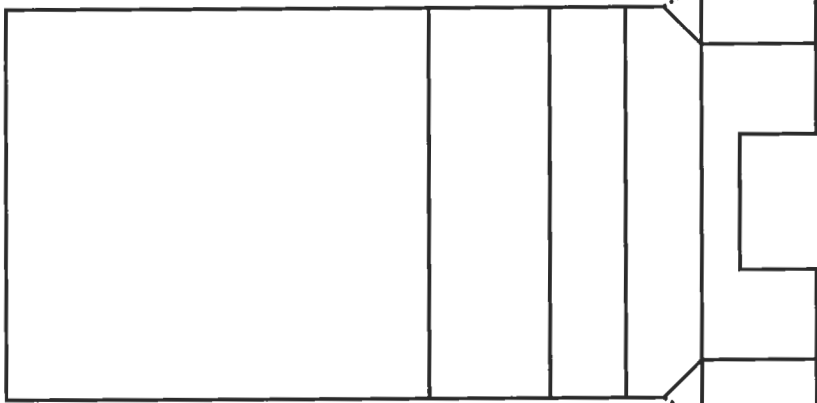
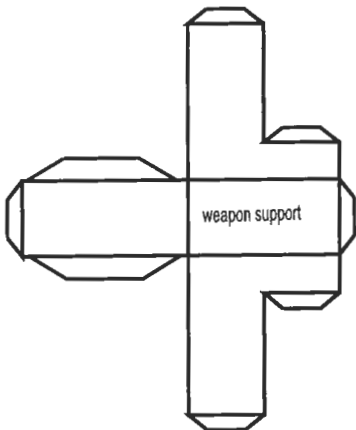
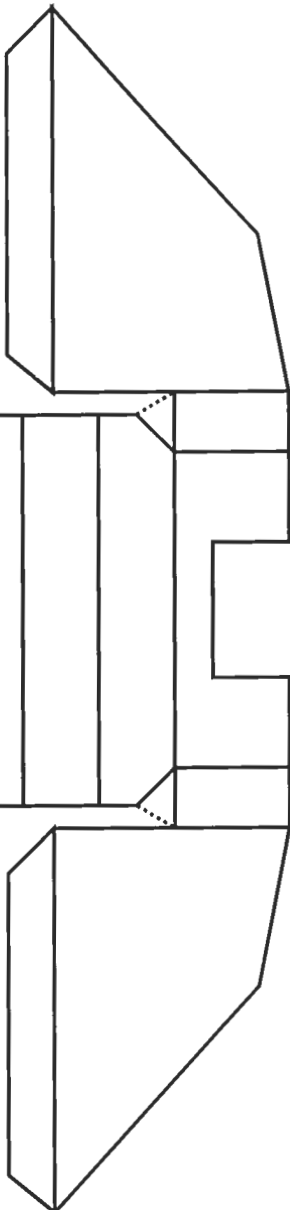
1 Cm

Salamander scout vehicle

print size 26 x 18,5 Cm

1 Inch

(C) Bulldog2708 August 2006



1 Cm

Salamander command vehicle
print size 26 x 18,5 Cm

1 Inch

(C) Bulldog2708 August 2006