

Thankyou for choosing Nova's Thunderhawk Gunship templates.

# IMPERIAL THUNDERHAWK GUNSHIP

Weapons that you need to provide for yourself:

-6x twin linked heavy bolters (12 heavy bolters)

1 set both sides, below front winglets

1 set both sides, on end of wings

1 set both sides, rear below hatches

-1x large battle cannon barrel (2cm to 1 inch in diameter)

large center gun mount

-2x wing mounted heavy bolter control system (either pilot or computer thing)

in circle on both wings

NOTES – Tricky bits

## **Winglets and tail fin.**

There are two sets of each detail segment one for both sides of the main section.

## **Engines**

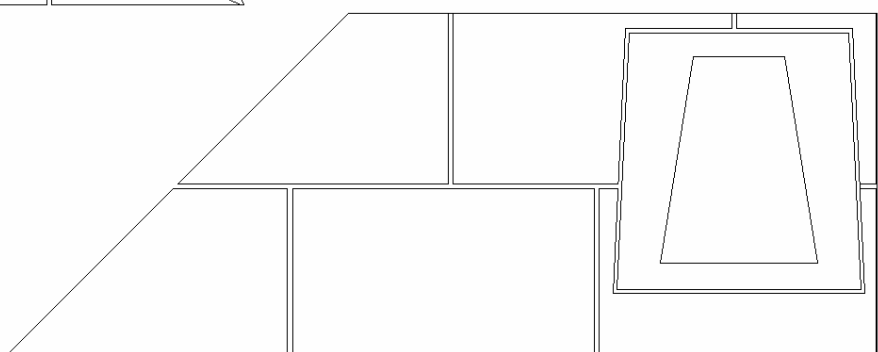
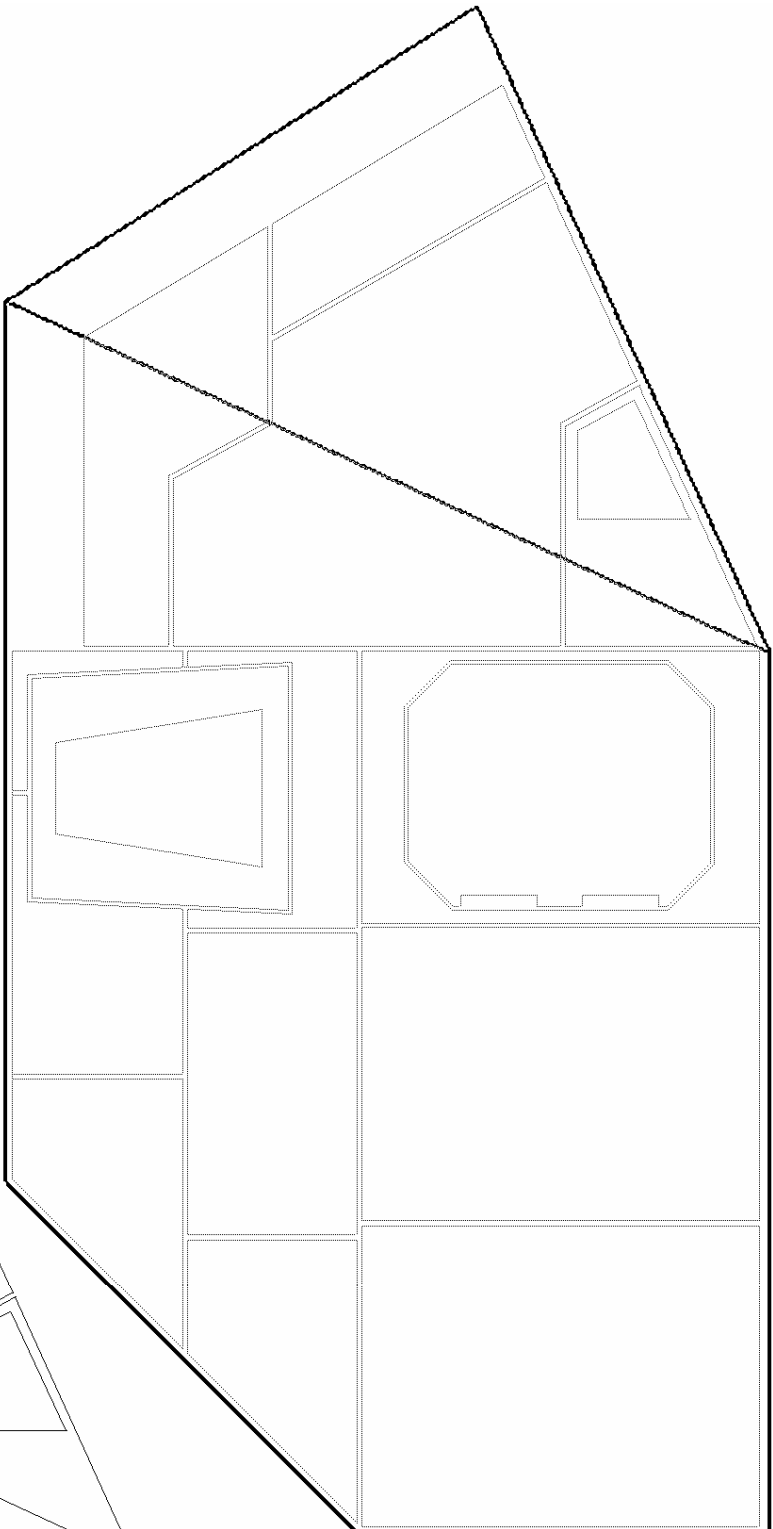
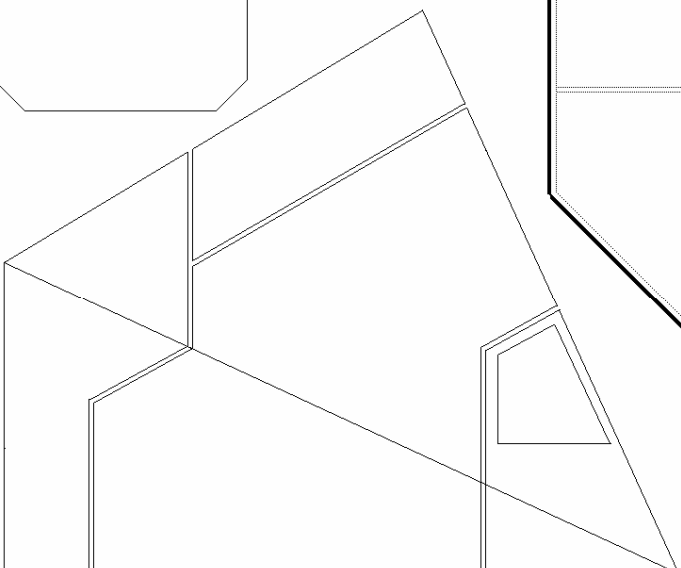
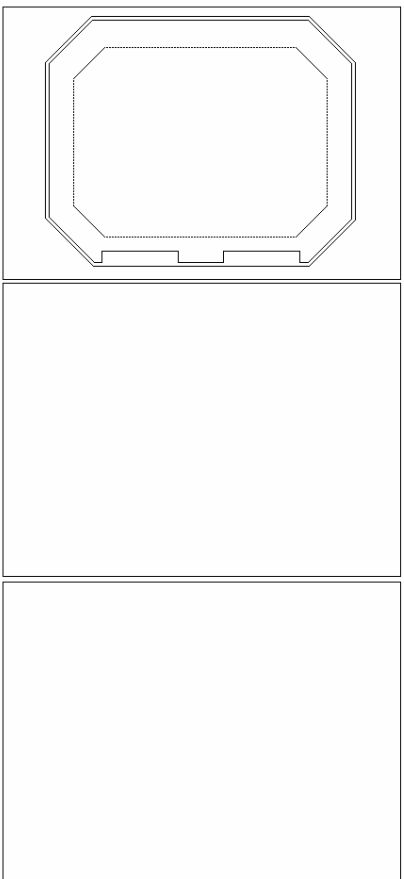
The piece of paper to wrap around the engines may not be long enough, consider printing off a second set to make the full distance.

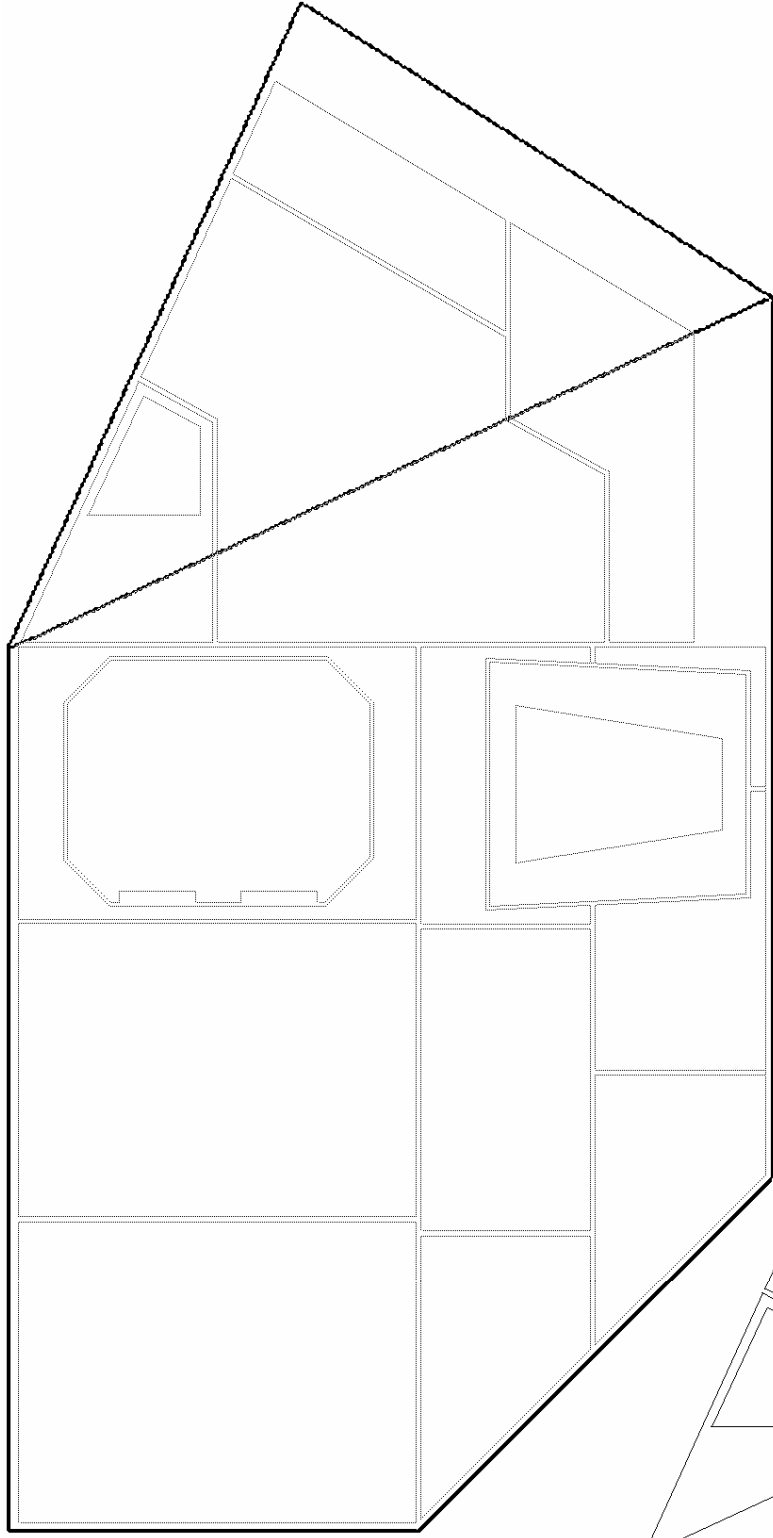
**also...**

Some pieces may not match perfectly, I'm afraid you will have to make do.

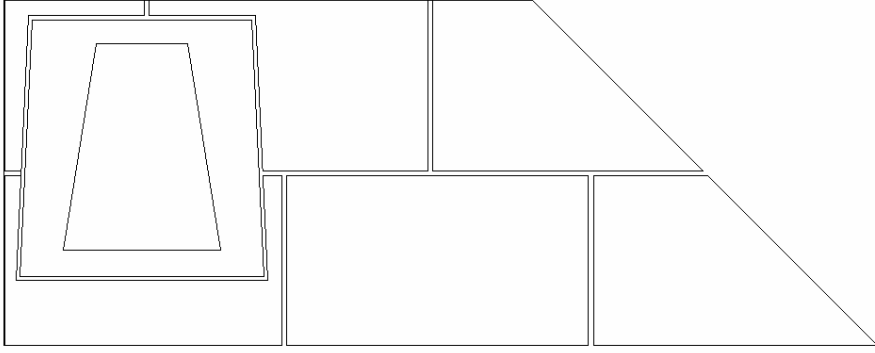
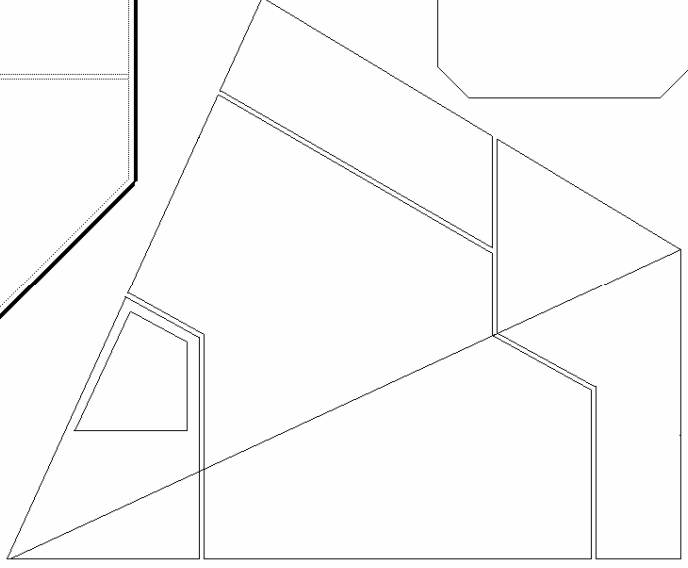
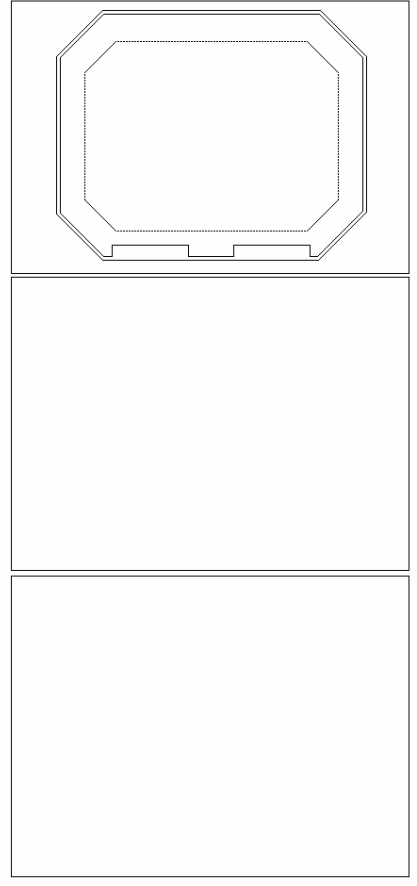
**ENJOY**

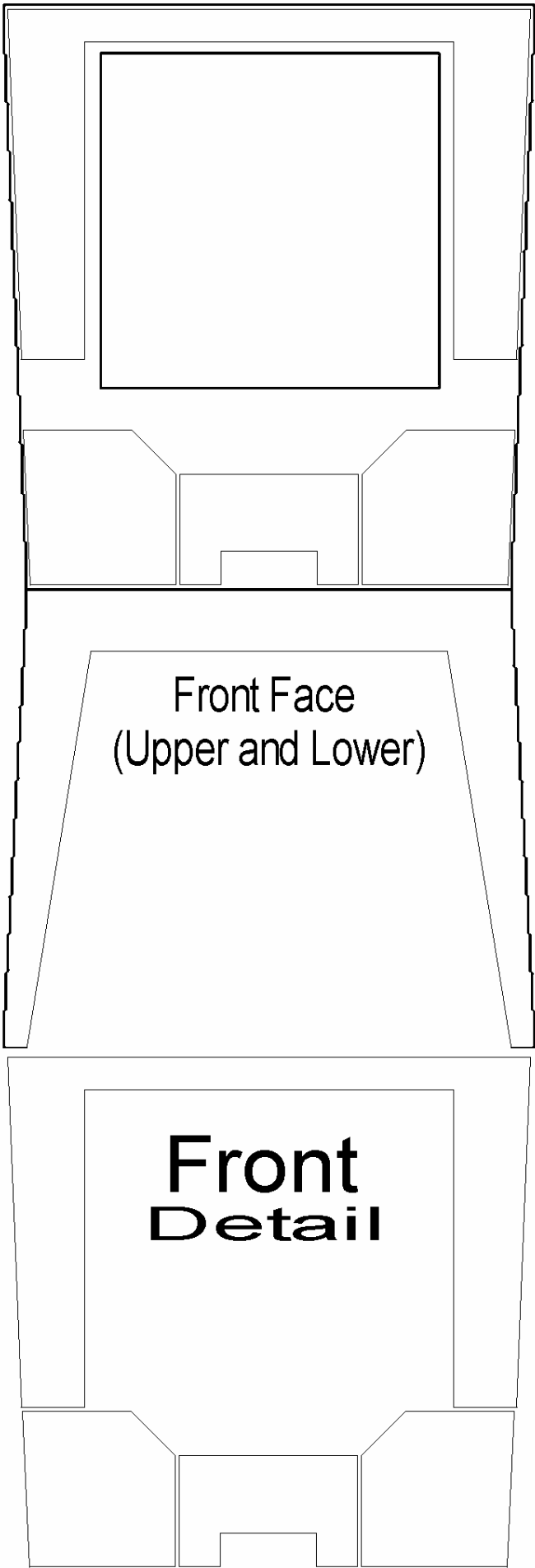
# Front Left



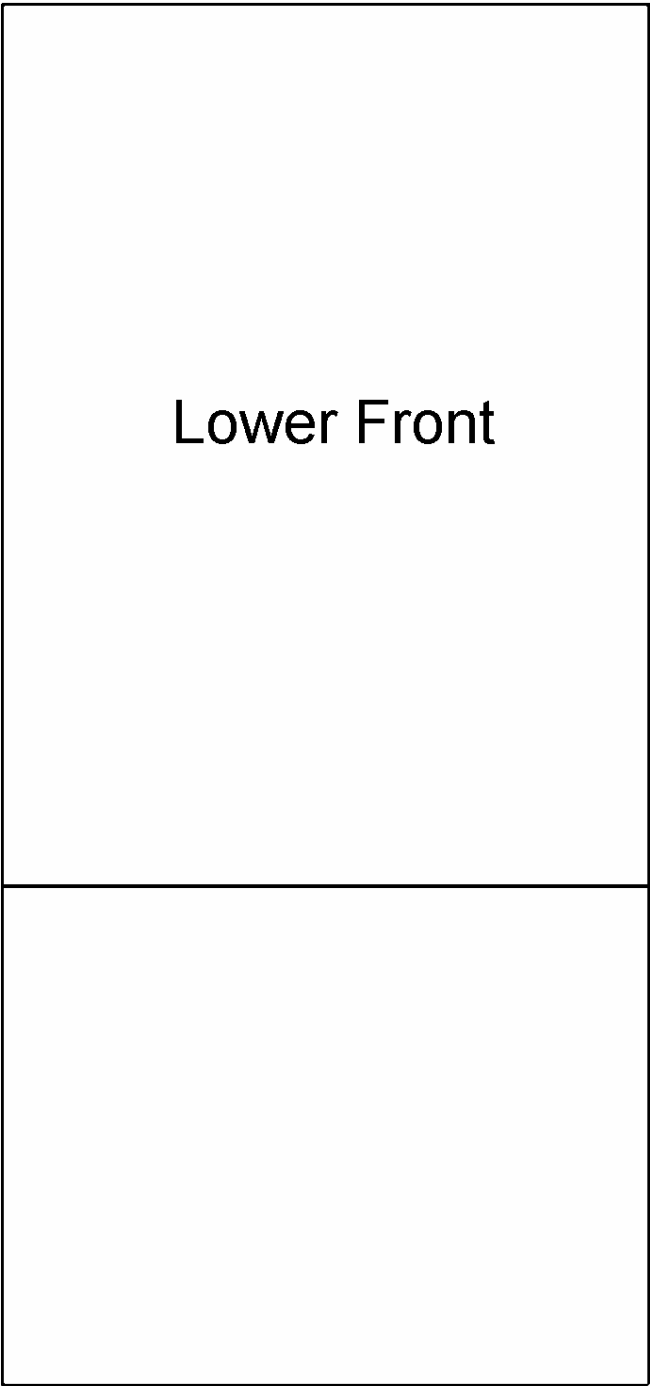


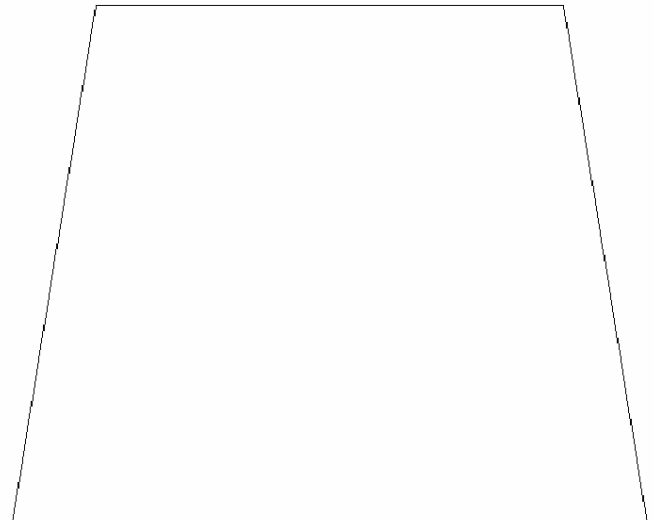
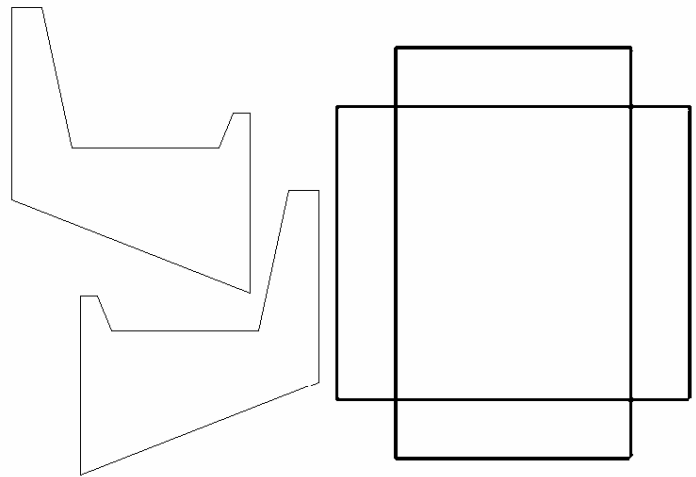
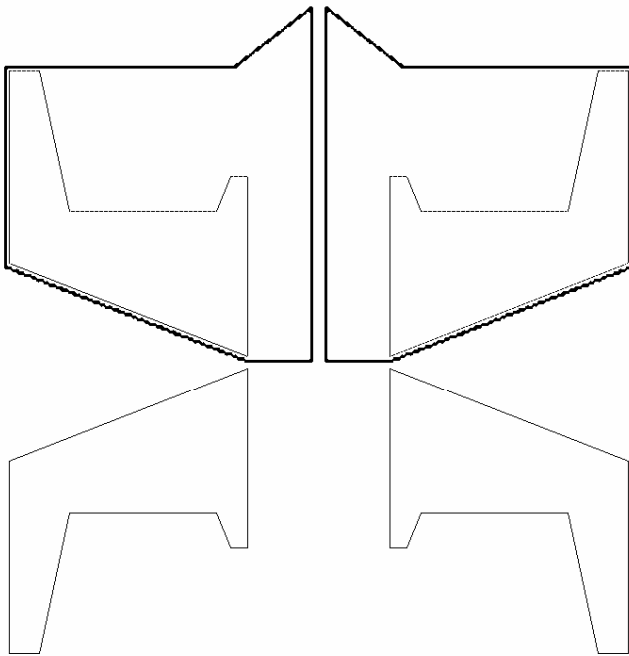
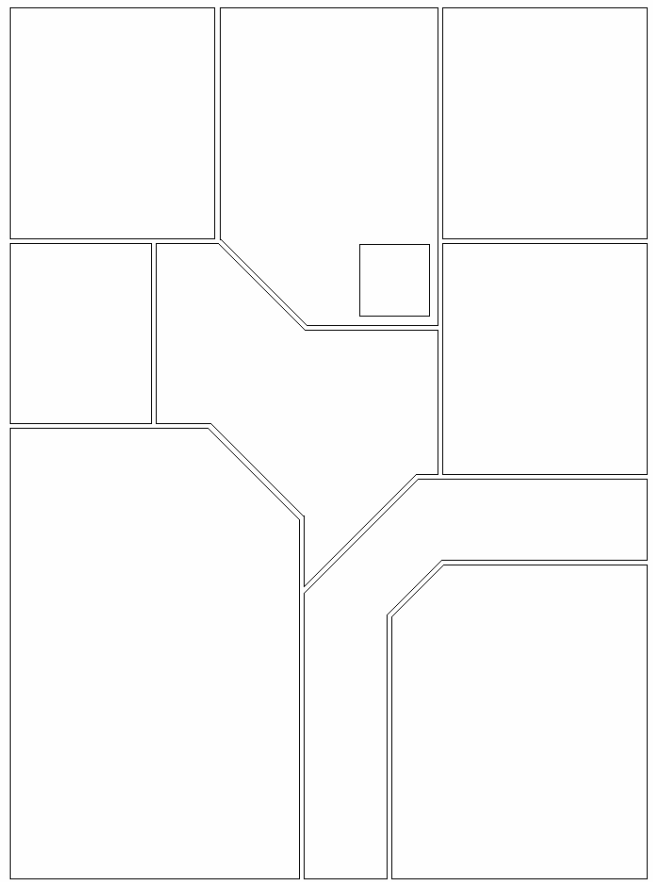
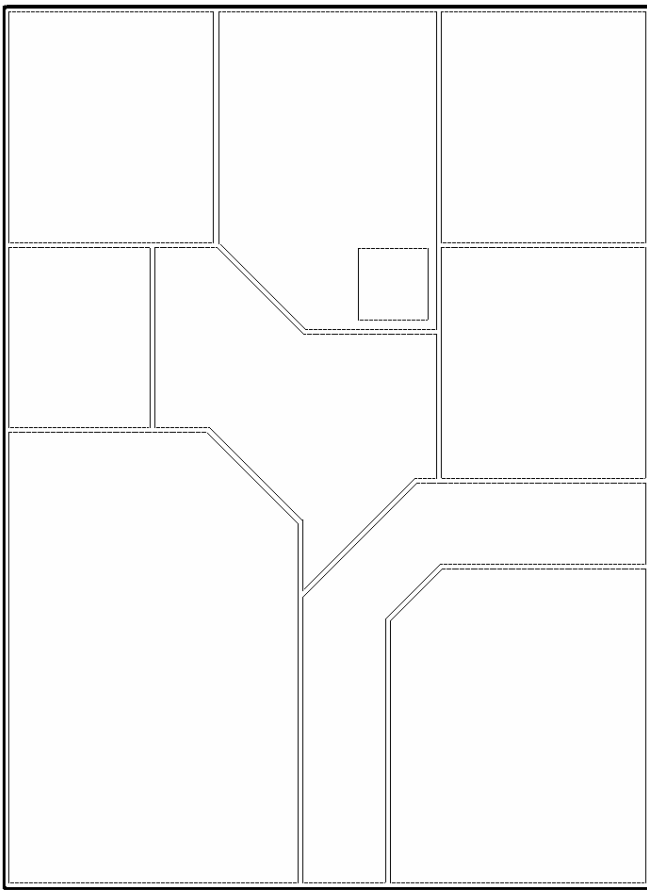
Front Right



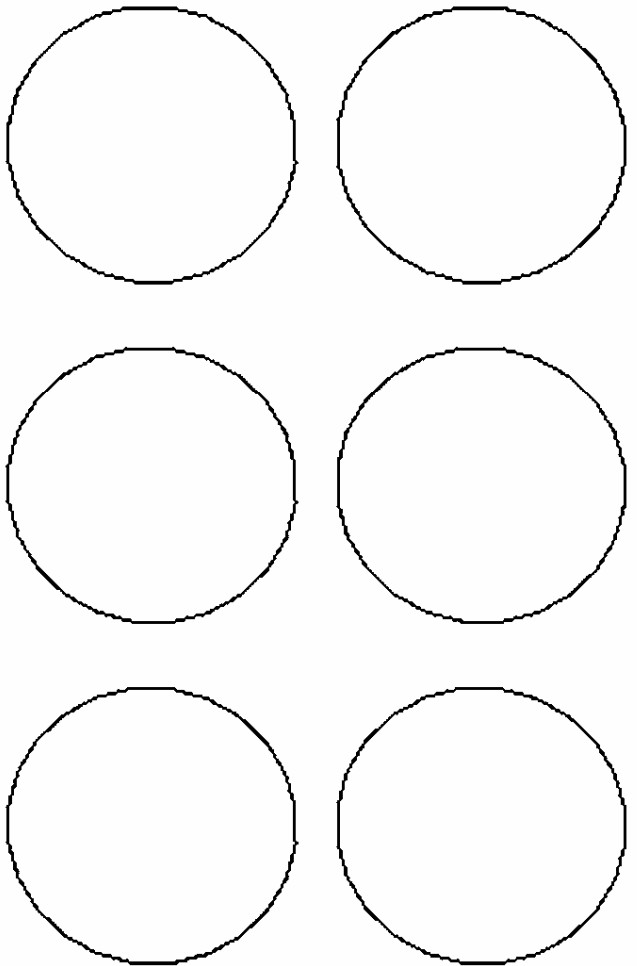
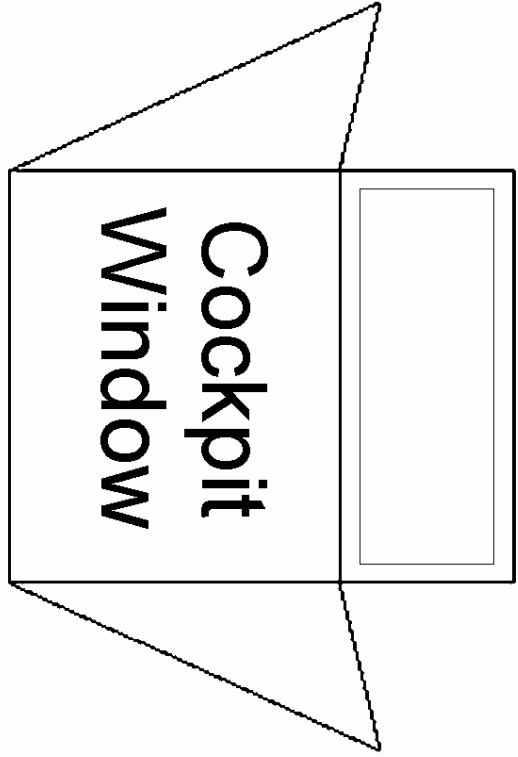
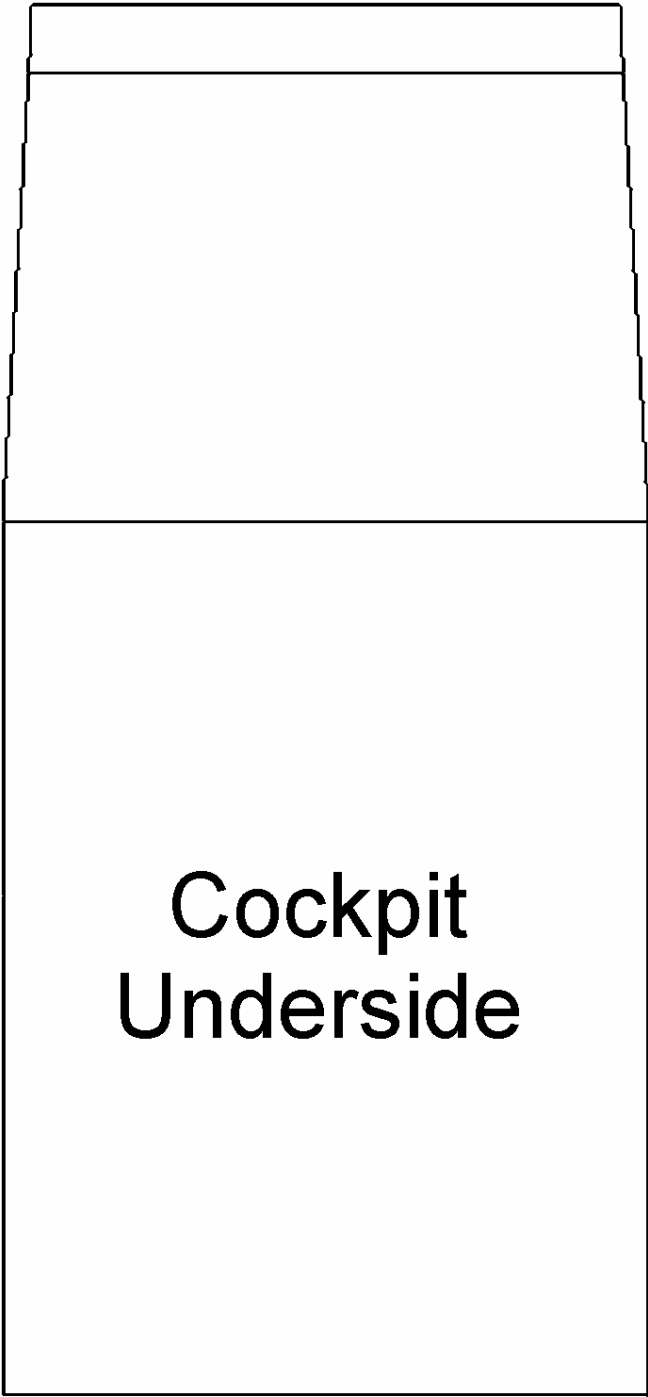


Lower Front

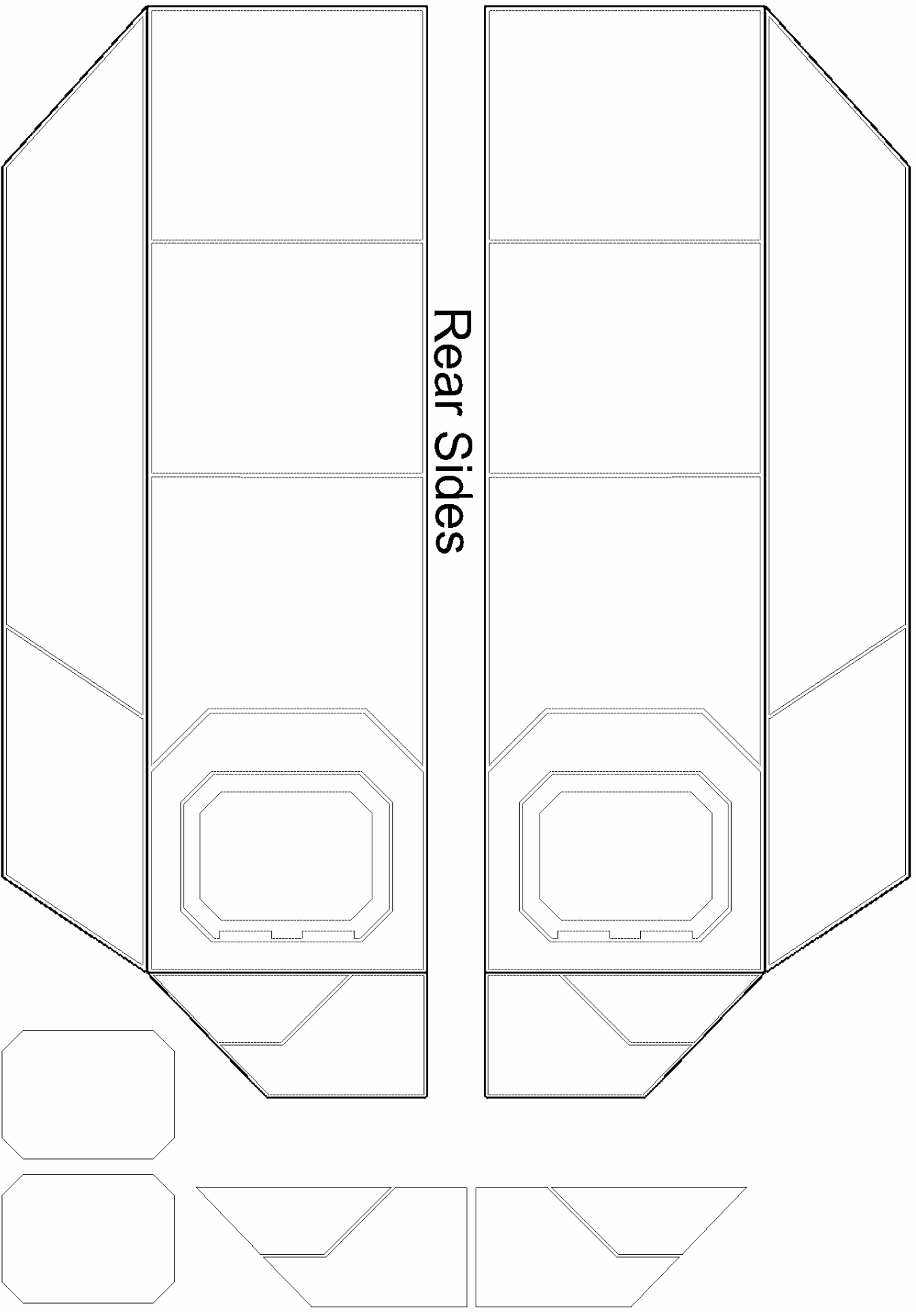


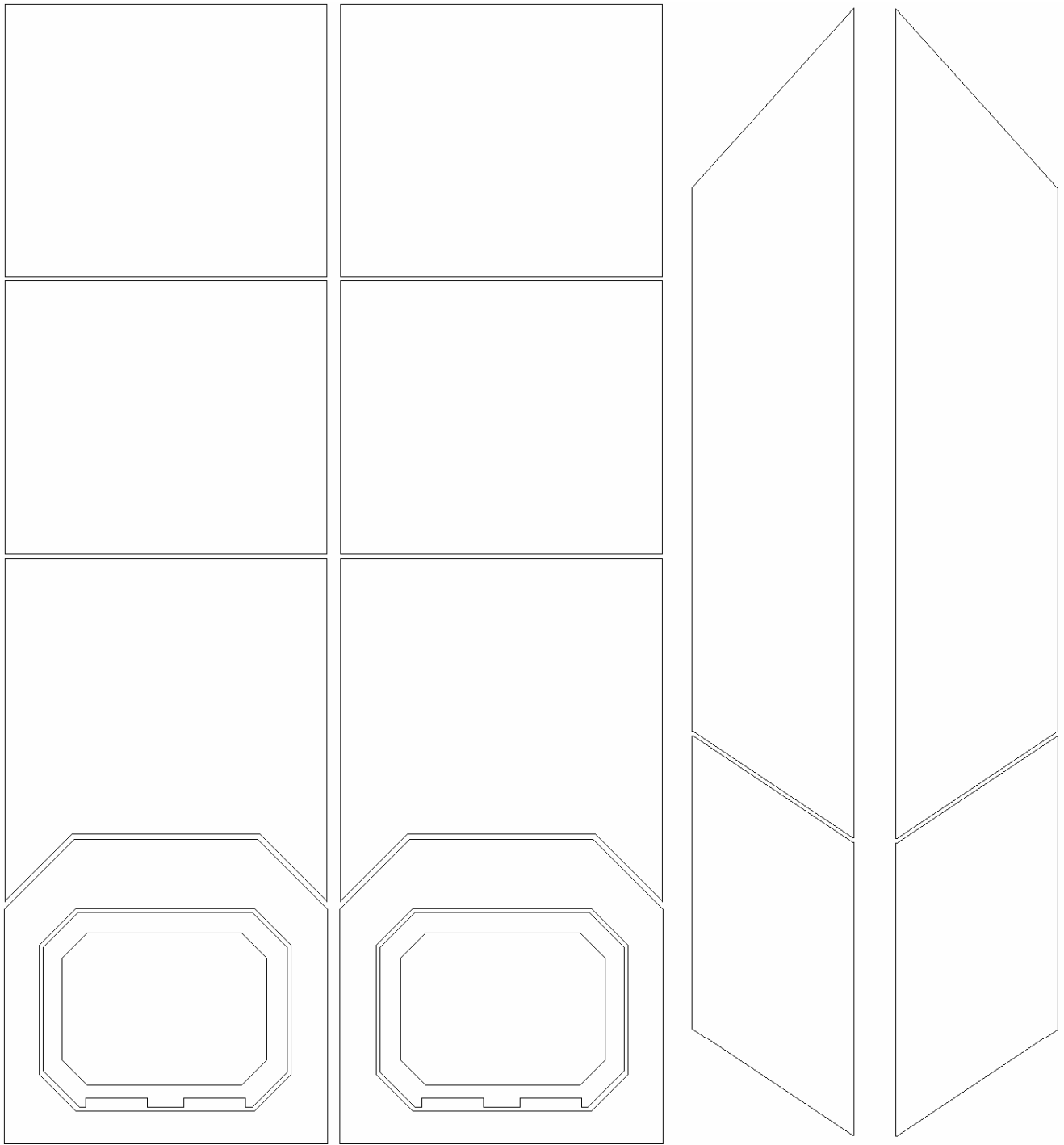


Top Front and  
front winglets



# Rear Sides

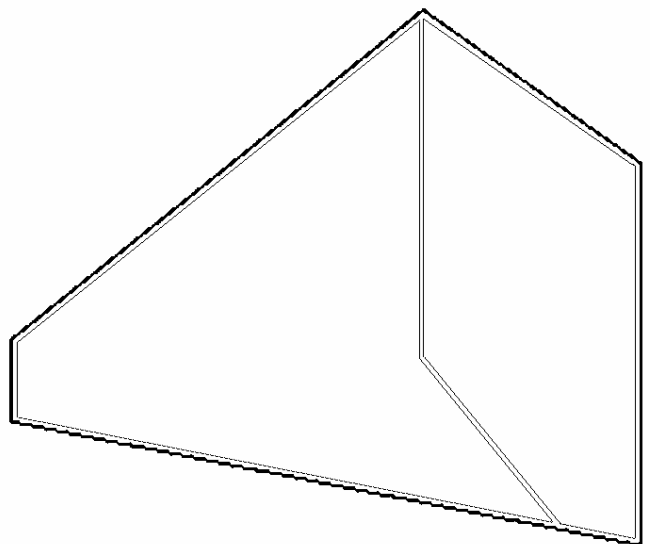
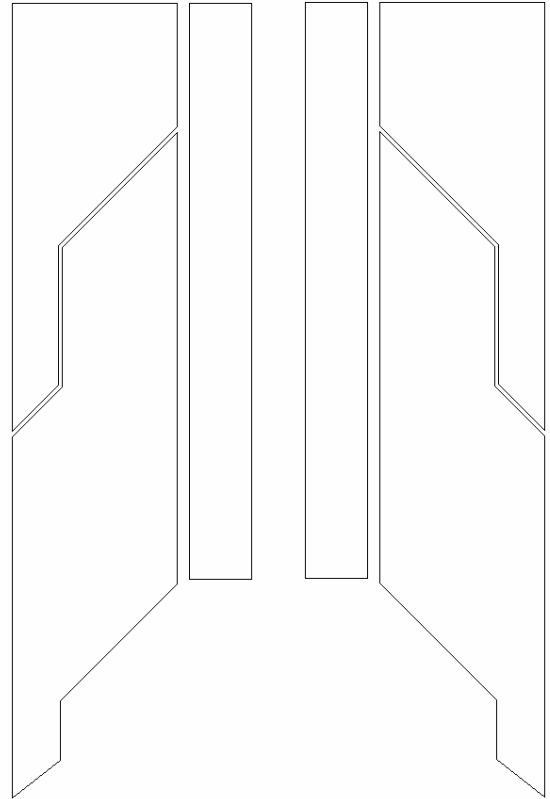


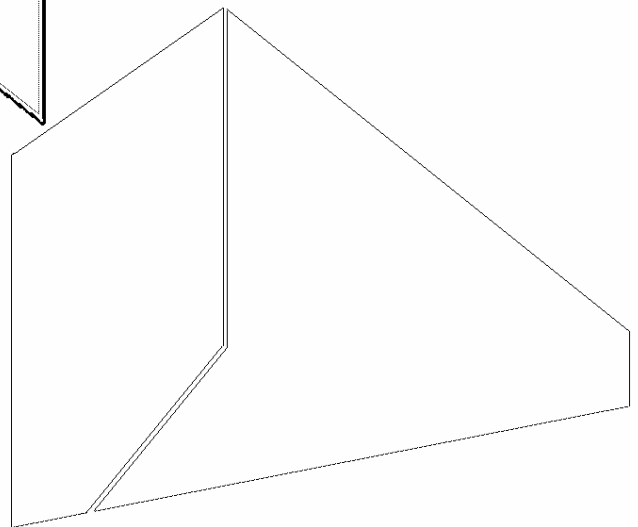
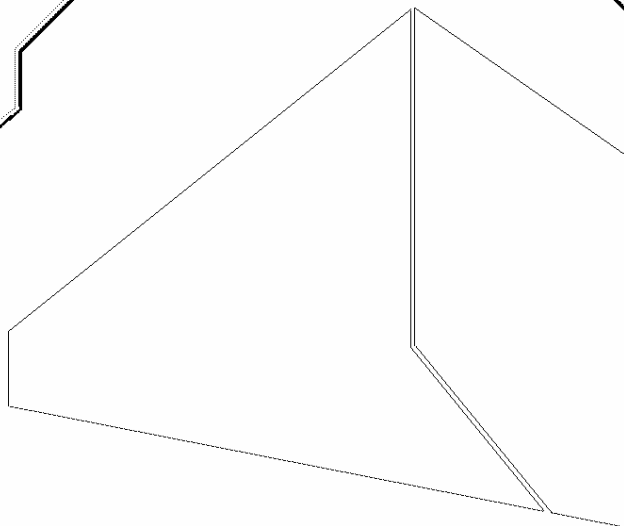
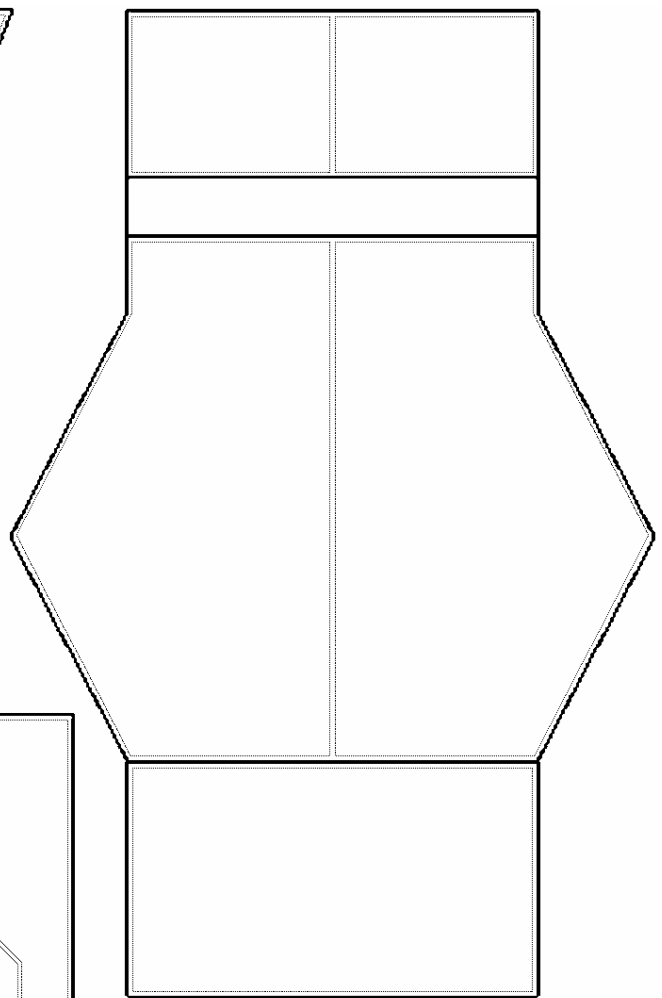
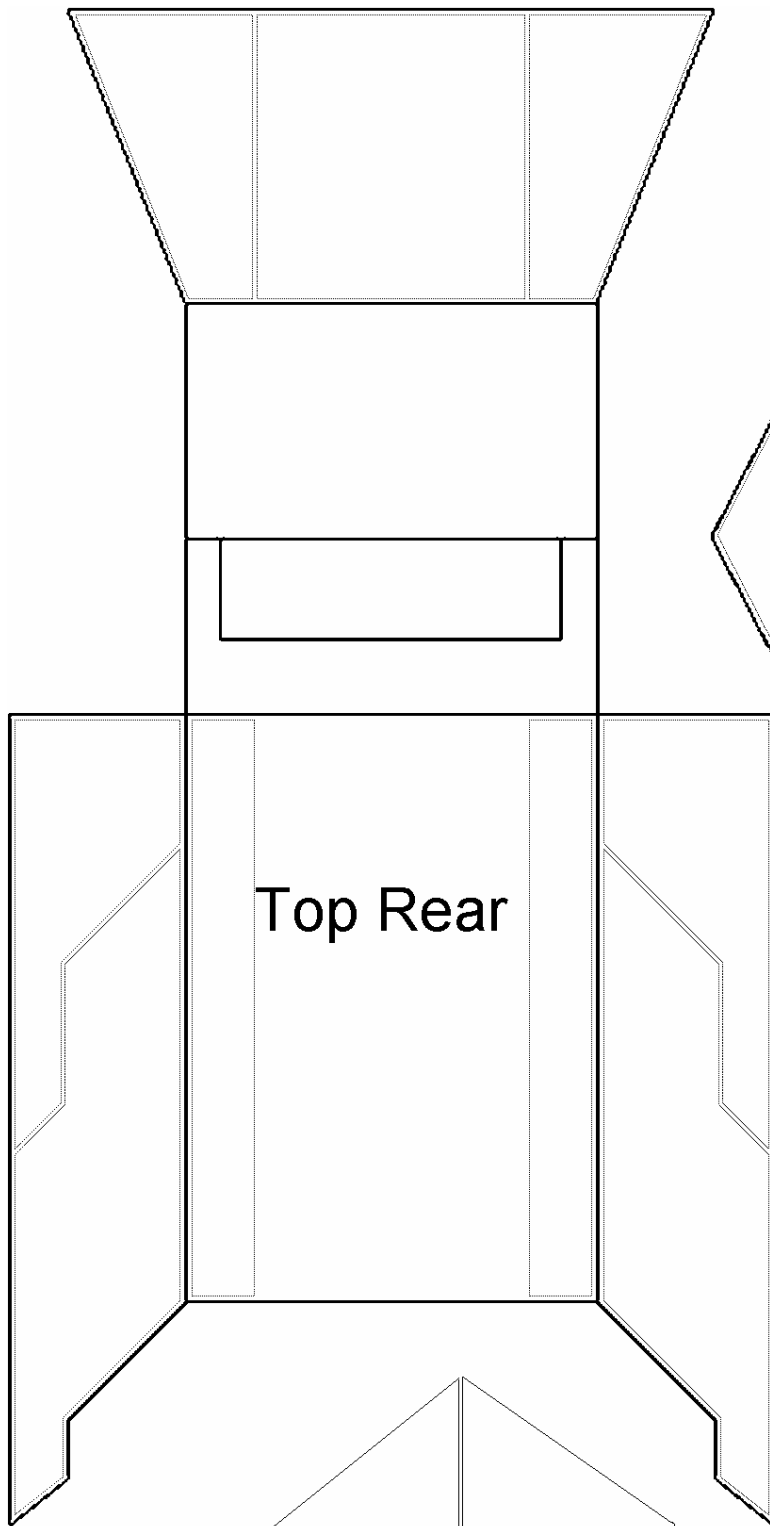


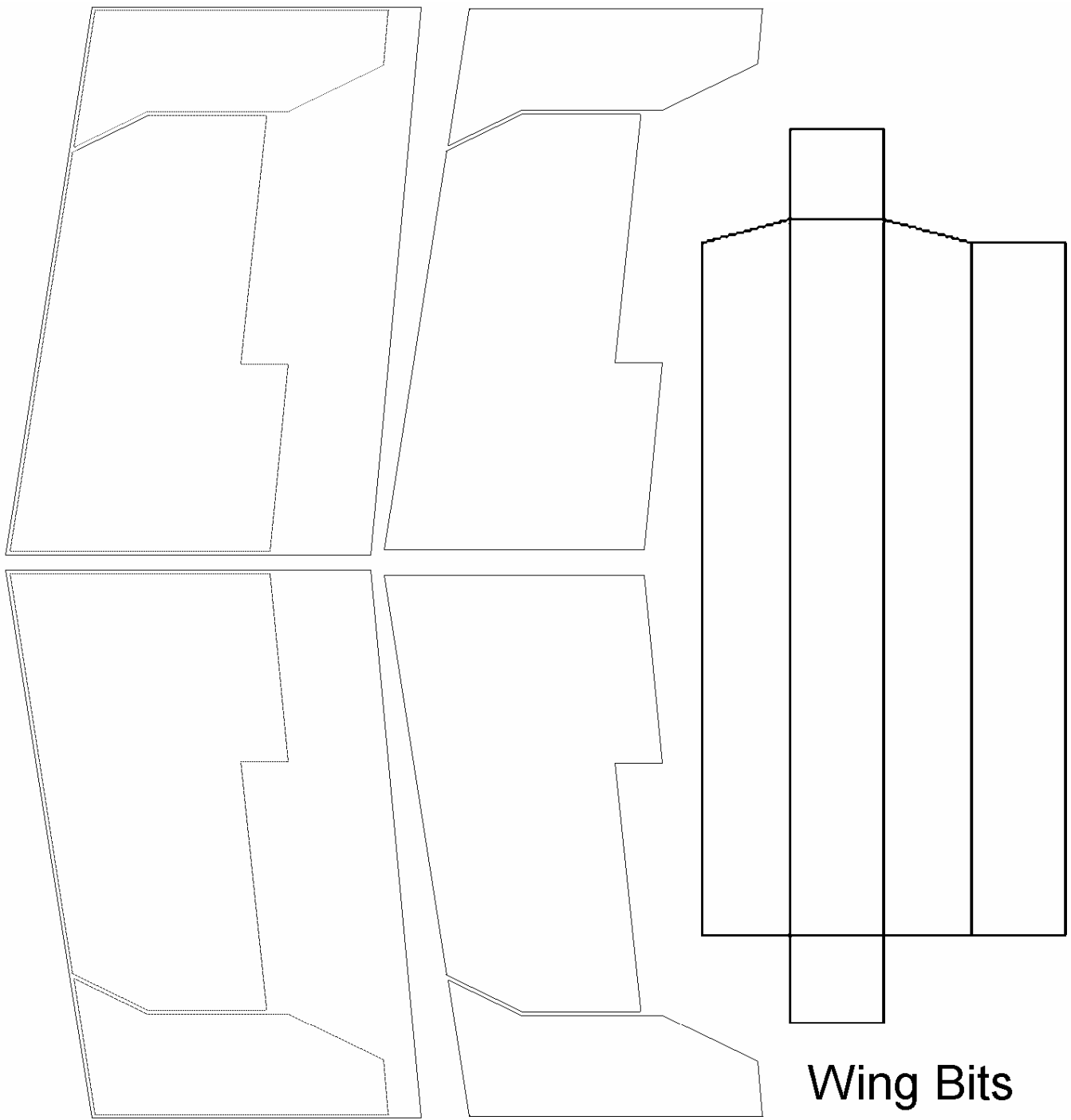
Rear Side Details



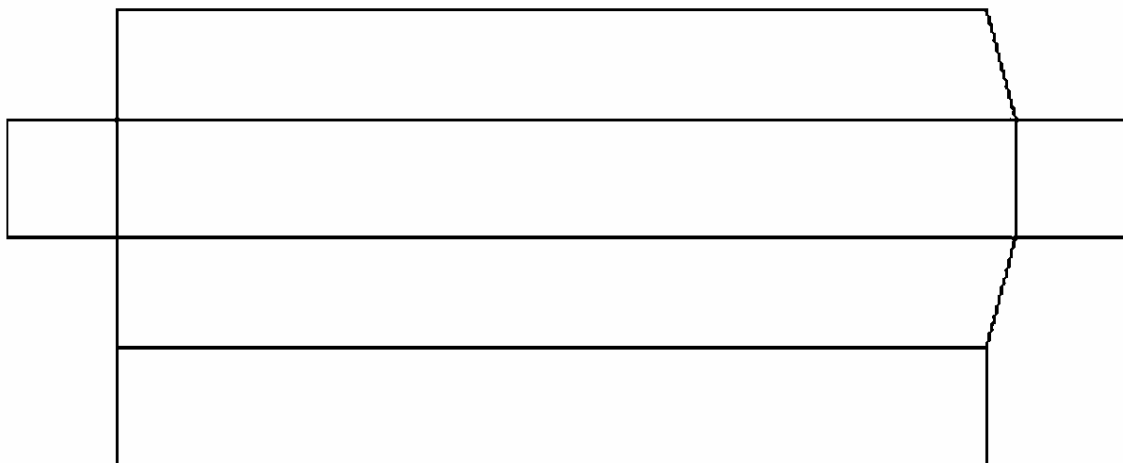
Bottom Rear

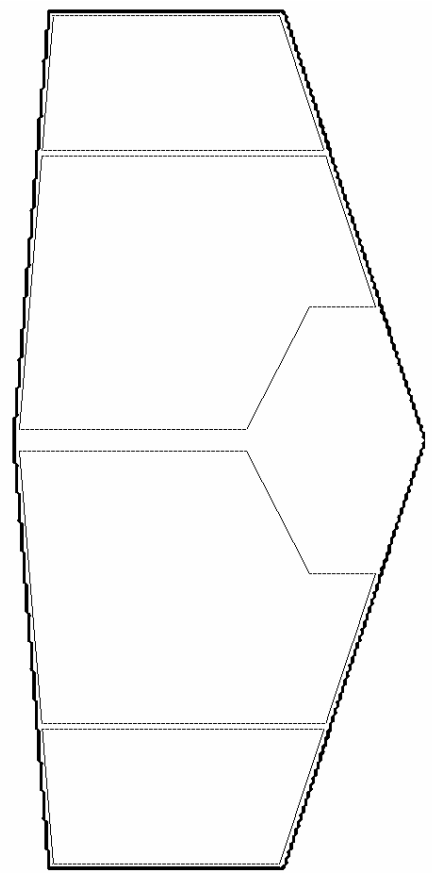
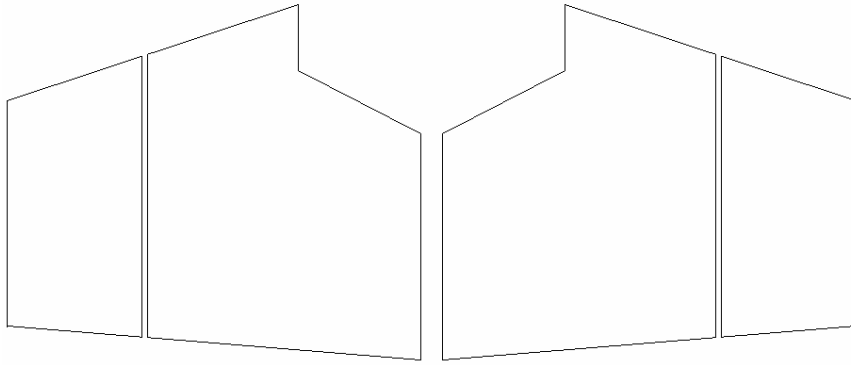
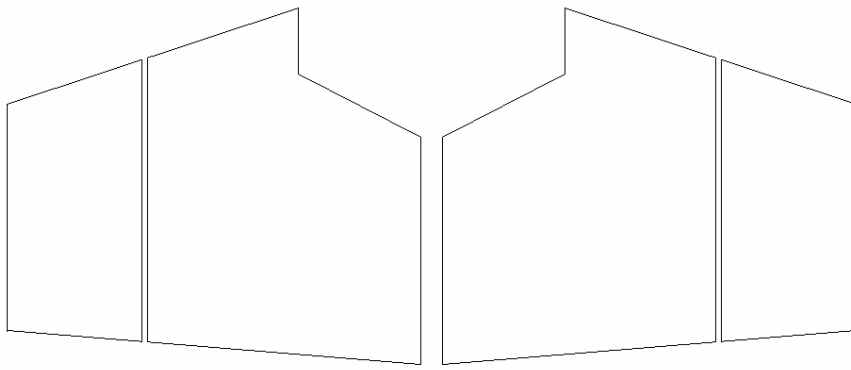




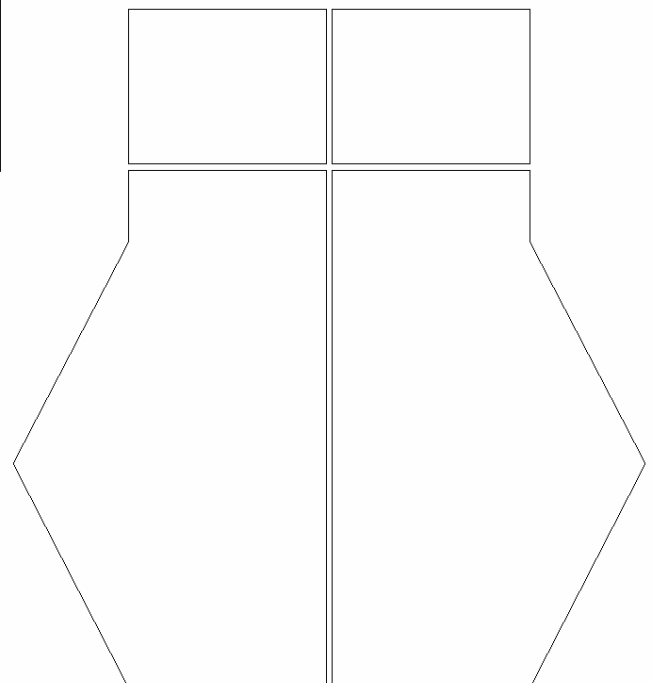
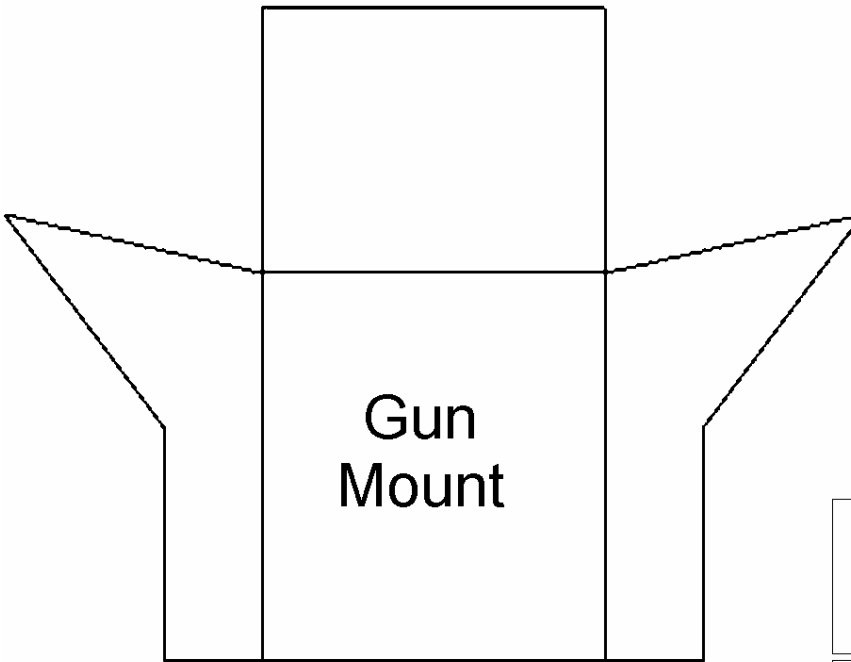


Wing Bits

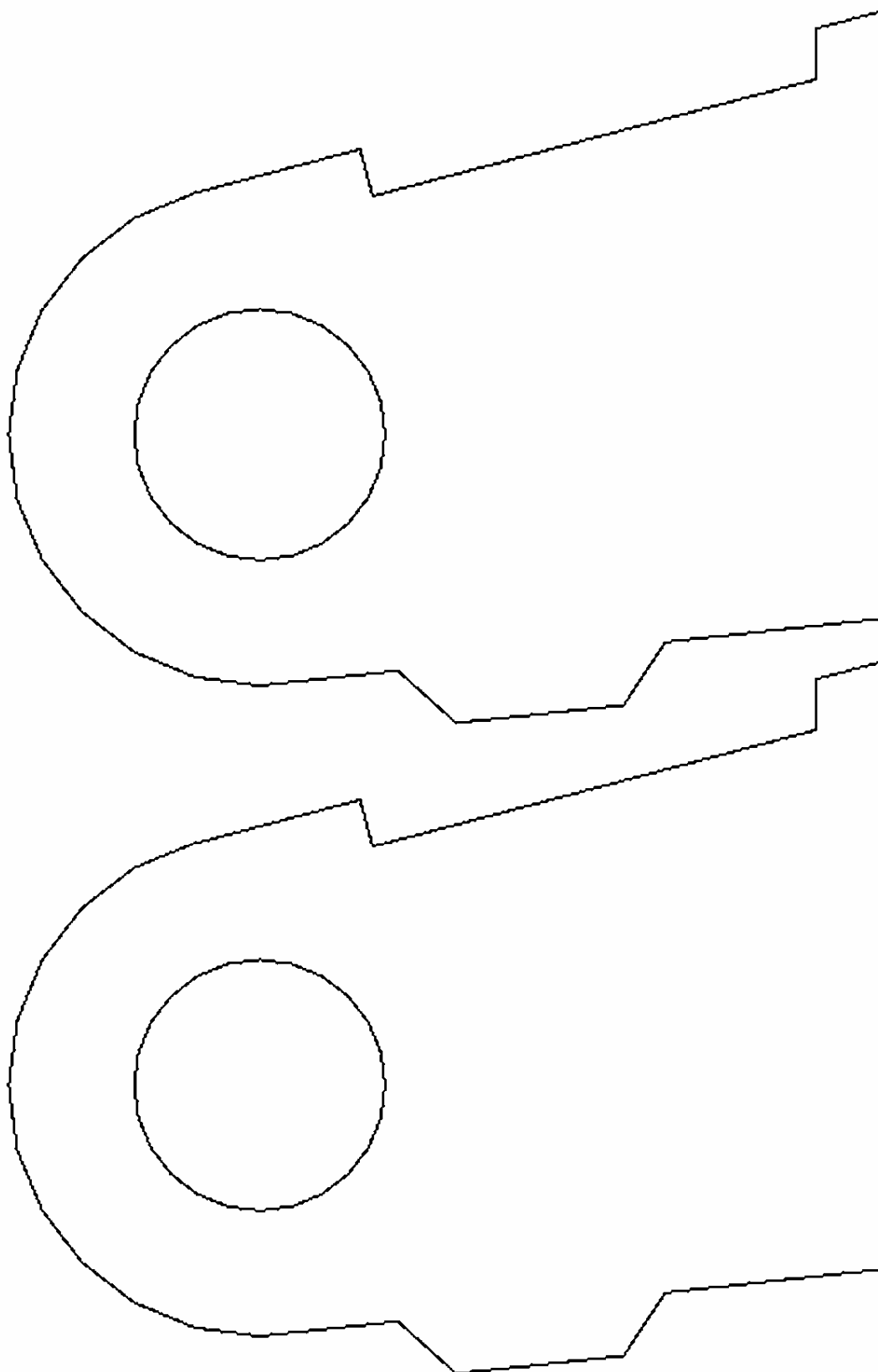
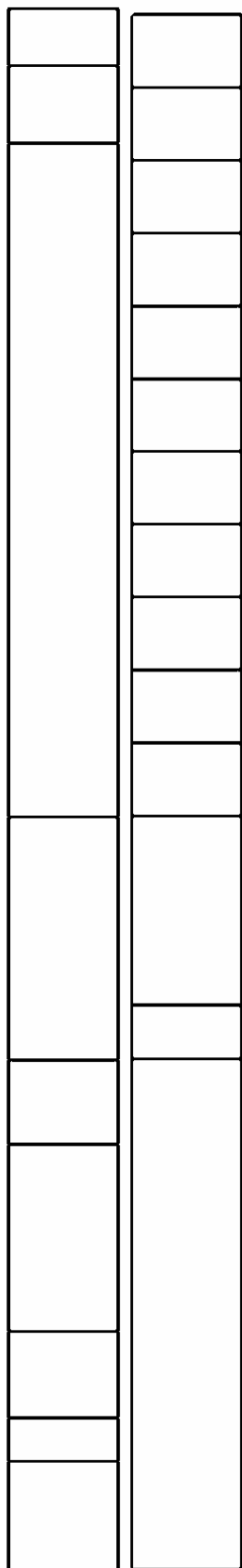




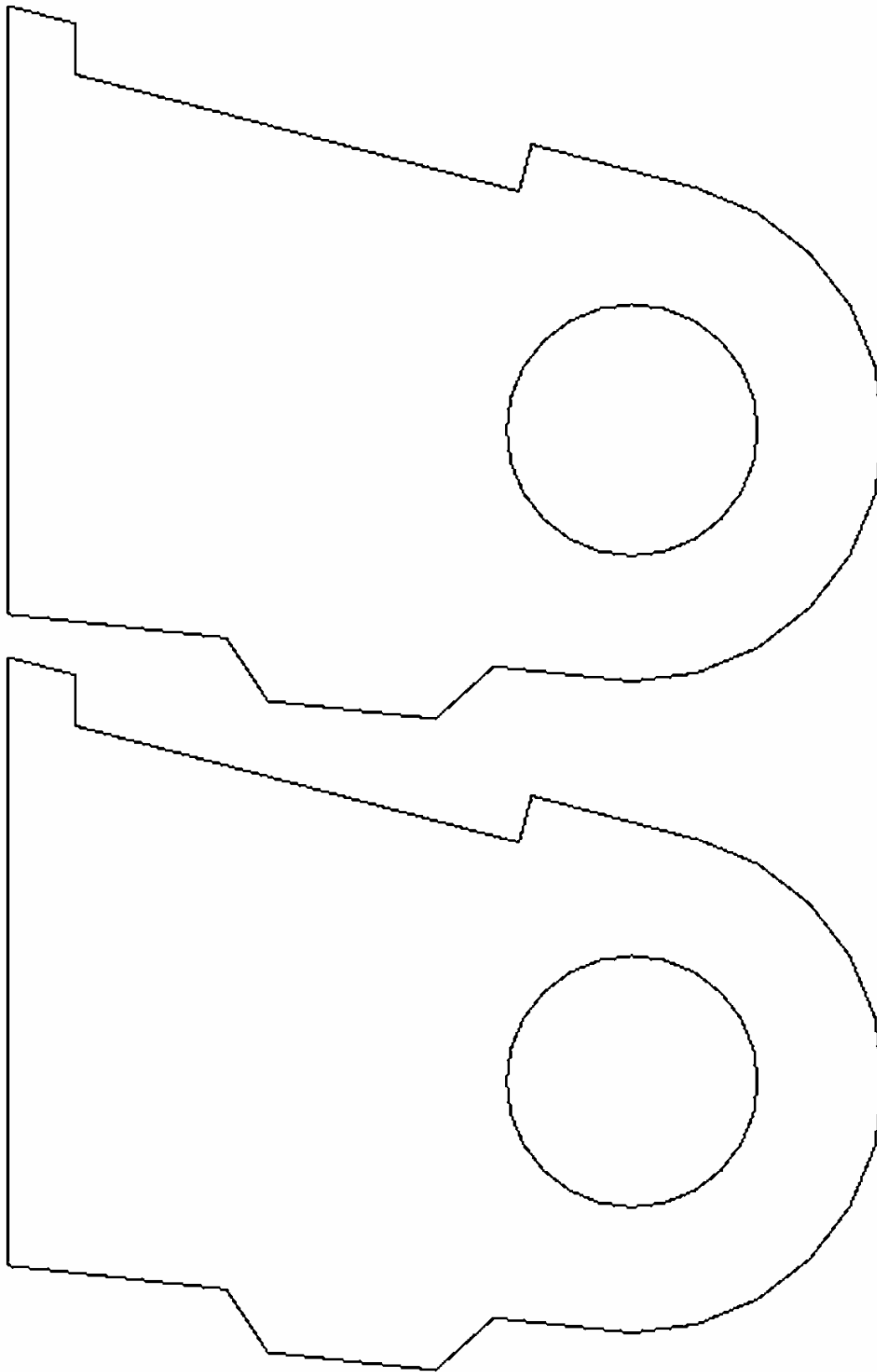
Fins



## Wing



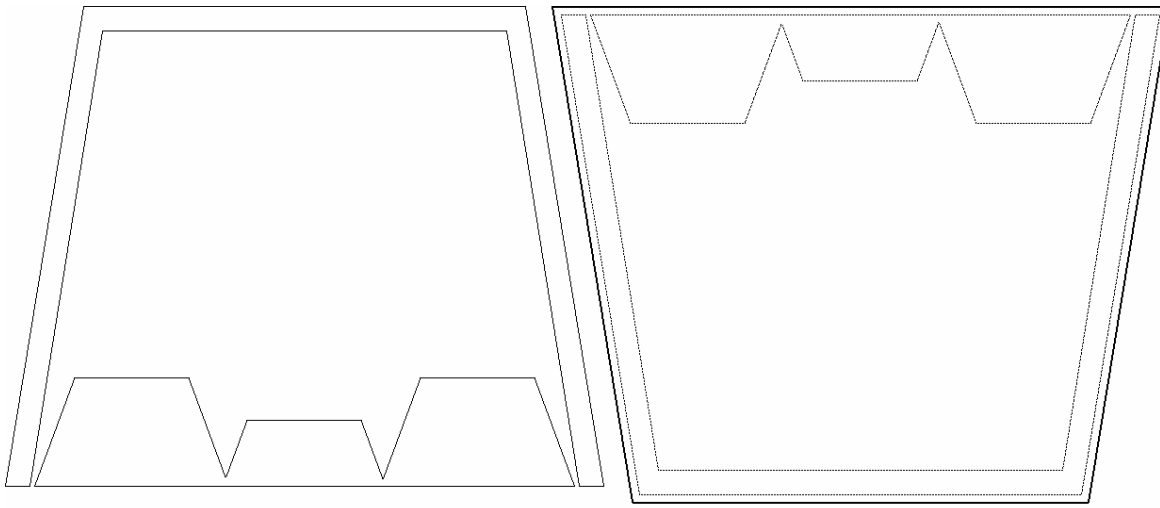
## Wing

[illegible]

# Engine Paper

# Engine Paper





Front hatch and details