

Elven Mill

Papercraft Model



LORD ZSEZSE
WORKS

Elven Mill

Papercraft Model

Foreword:

First of all, we would like to thank you for downloading our product!

We hope that this model will lead you through an interesting set of adventures and lend a little extra excitement to your game.

Have a great game!

Zoltán Bárány & Antal Kéninger

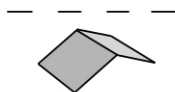
This is not a program, this is an interactive PDF file that includes layers and buttons. These will work only with Adobe Acrobat Reader. If you don't have Adobe Acrobat Reader, you can download the newest release here: <http://get.adobe.com/reader/>

Materials:

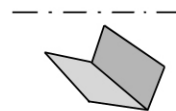
- Metal-edged ruler
- Butter knife
- Scissors or craft knife
- Cutting mat (optional)
- Multipurpose glue

1. Print out all pages and allow them to dry. Use 180-200 Gram paper.
2. Using scissors or a craft knife and cutting mat, cut out all pieces along solid lines.
3. Score all the pieces: Using a ruler as a guide, run the back side of a butter knife firmly along all dashed and dotted lines.
4. Fold all pieces along score lines, using the folding key below as a reference.

Mountain Fold



Valley Fold



www.lordzsezseworks.com

www.facebook.com/lordzsezseworks

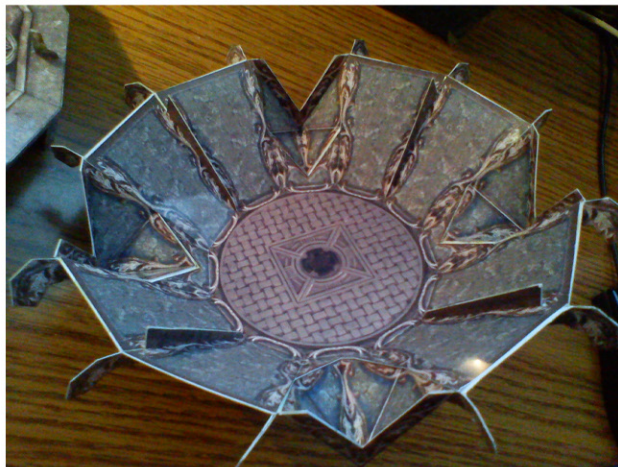
@LordZsezseWorks



Reference Pictures:



Roof ~ Inner side with 4 windows:



Roof ~ Walls bottom view.



Inside the building.

Reference Pictures: Inner side with wheel.



Outer side without the wheel.

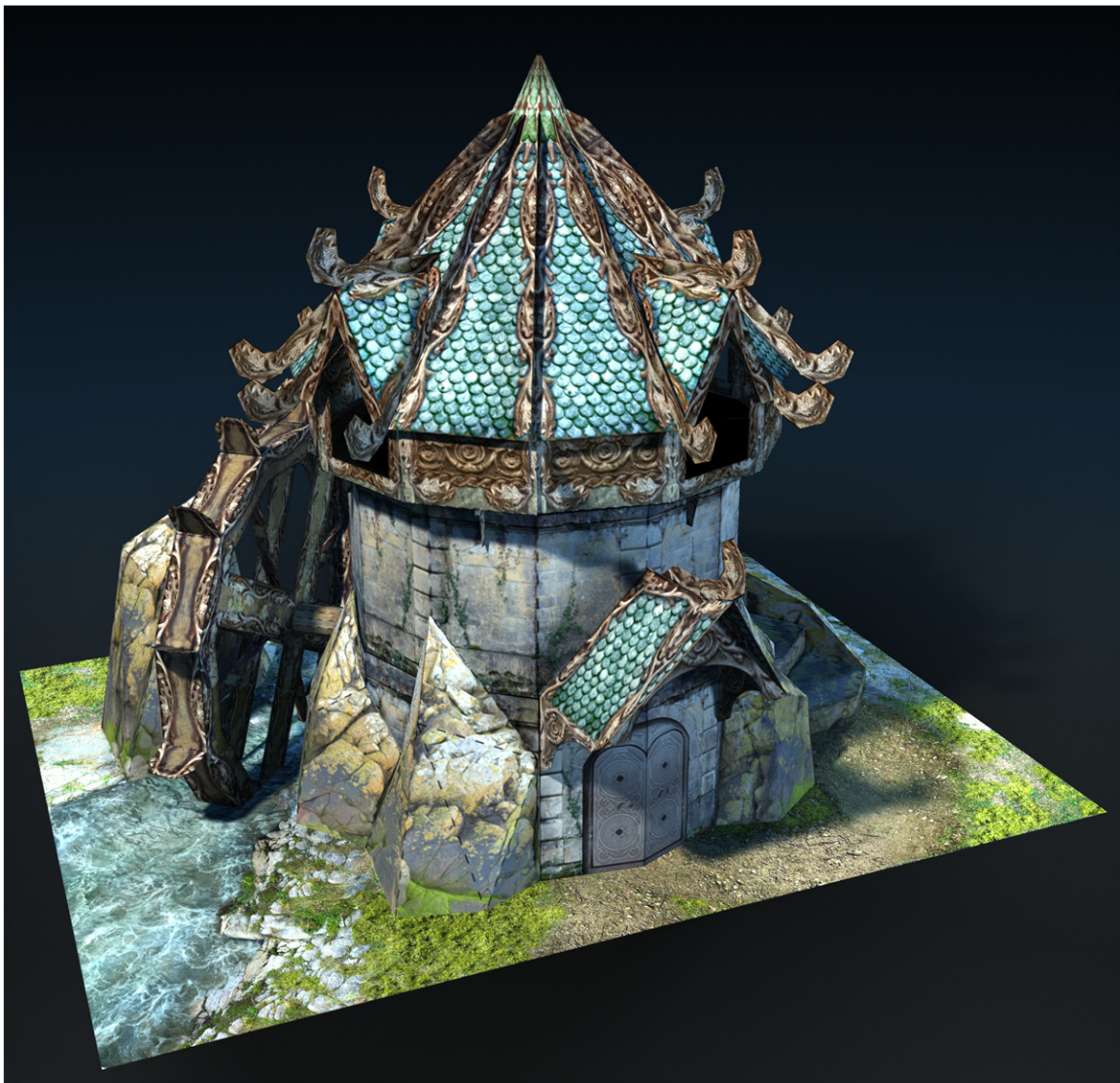
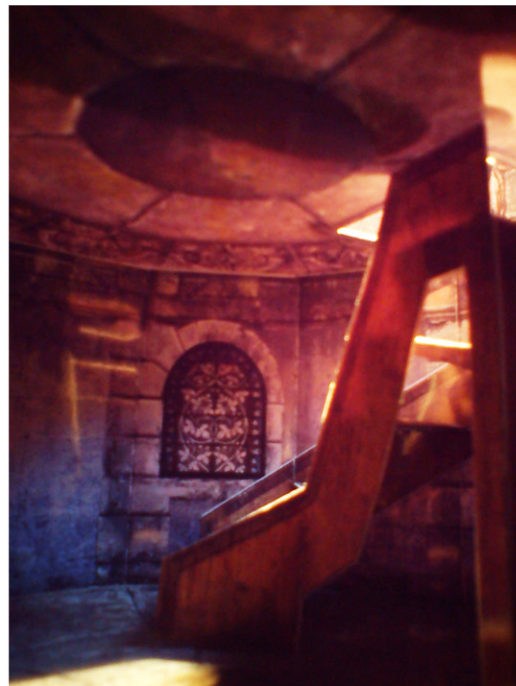
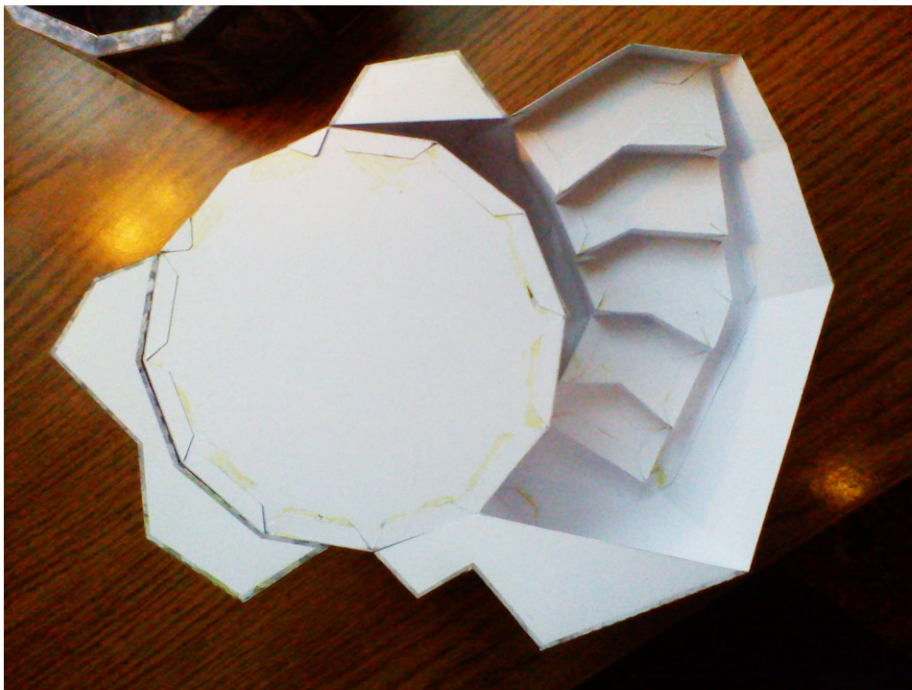


Mill wheel.



Reference Pictures:

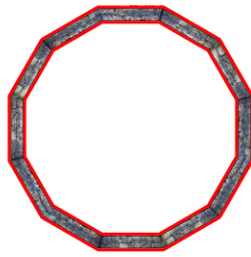
Bottom view of Ground Floor.



Ground Floor.

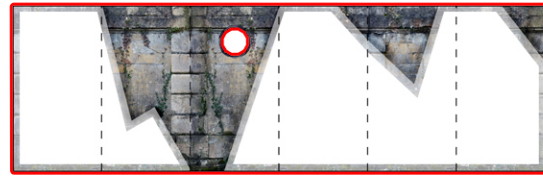
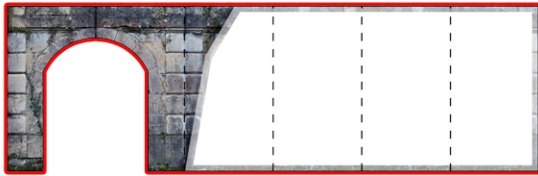
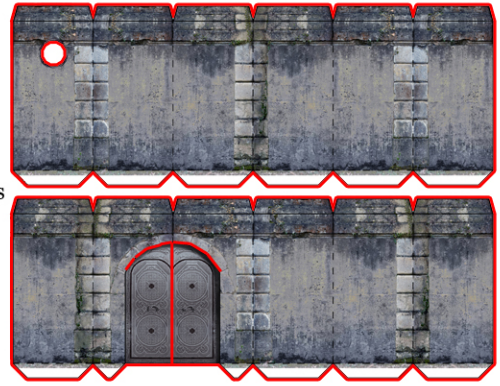


Floor.



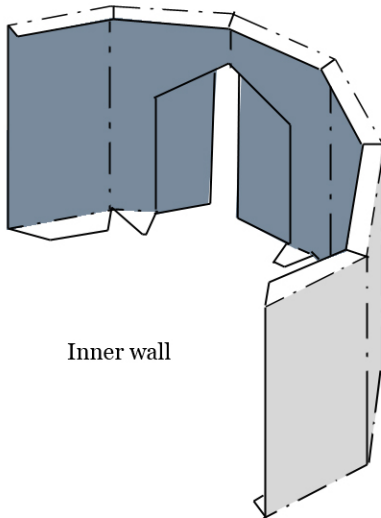
Top of Walls.

Inner walls

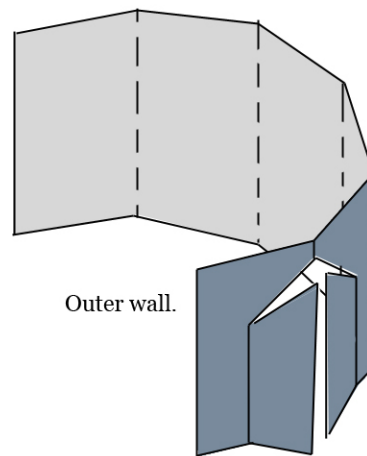


Outer walls.

1. Cut out the pieces and fold them along score lines.
2. Fold the sides and tabs of walls along score lines.
The part where you can see the tabs will be the inner side and the part where you can see bricks and white marks will be the outer side.

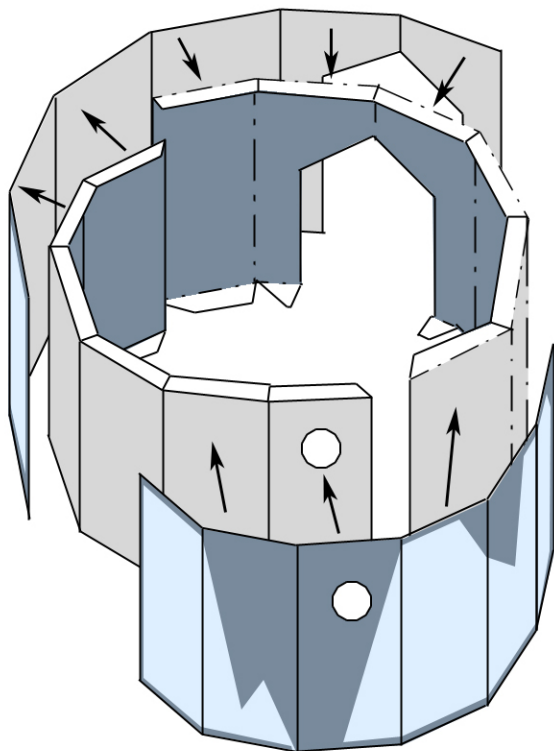


Inner wall

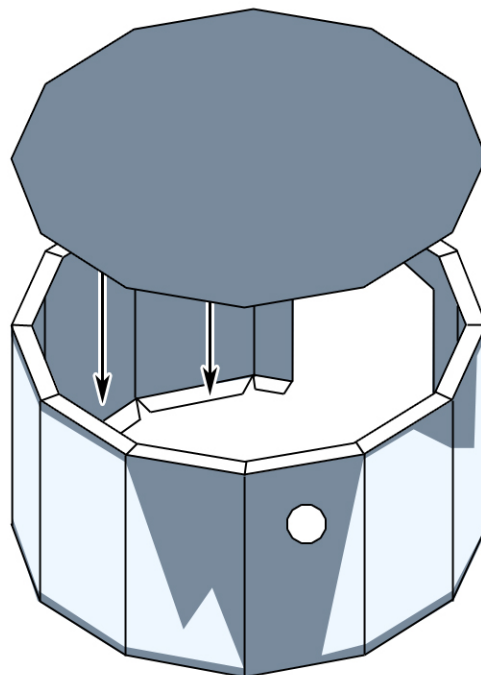


Outer wall.

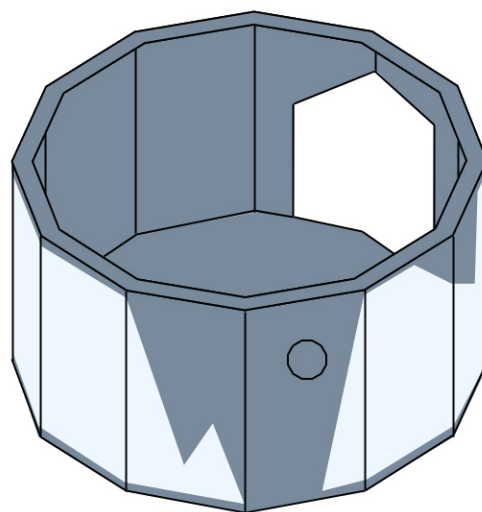
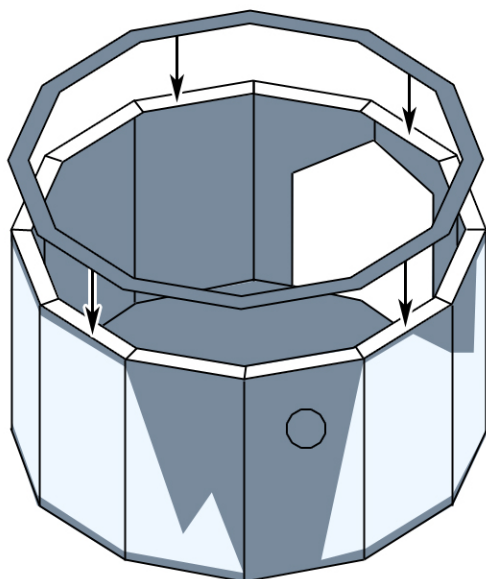
2. Glue the four parts to each other. Watch the door and the hole of mill-wheel.



3. Place the floor inside the ring of the wall and glue to it to the tabs on the bottom.

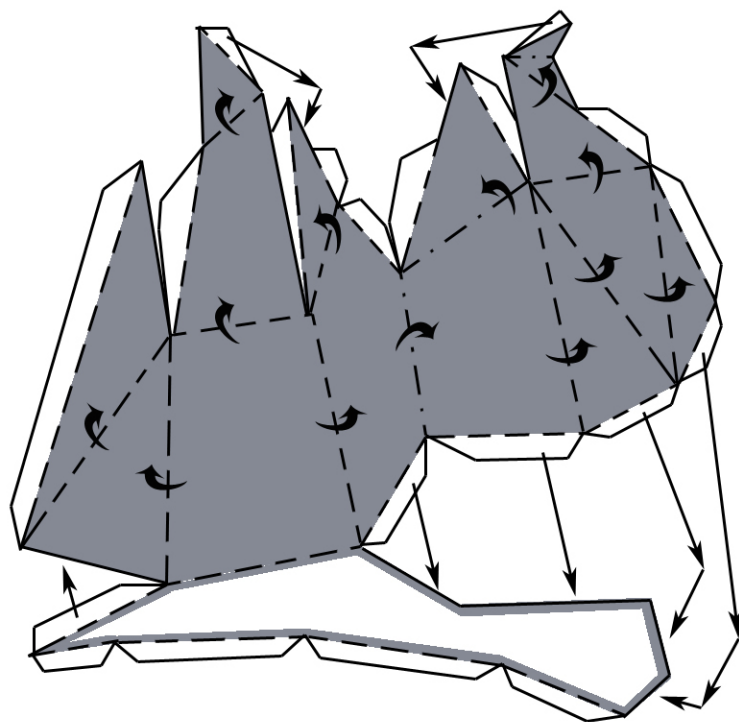
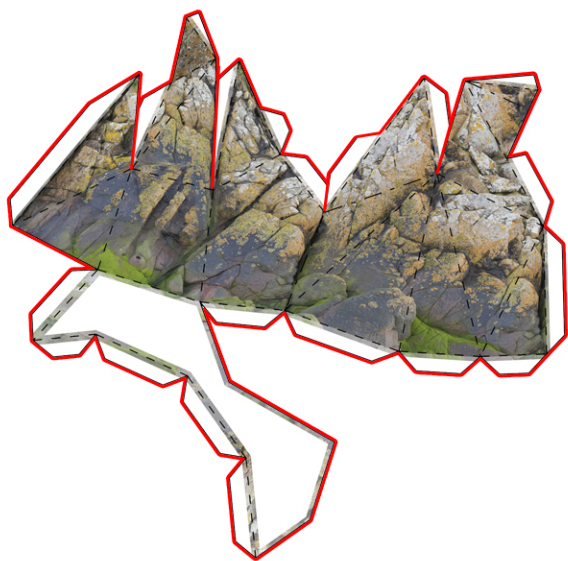


4. Glue the ring to the top of wall.

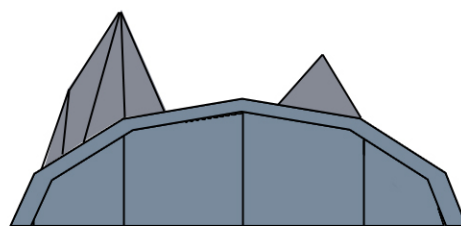
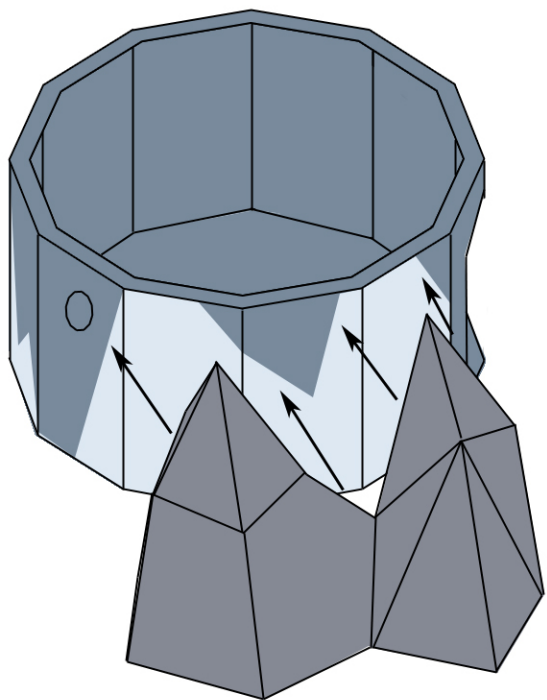


Rocks.

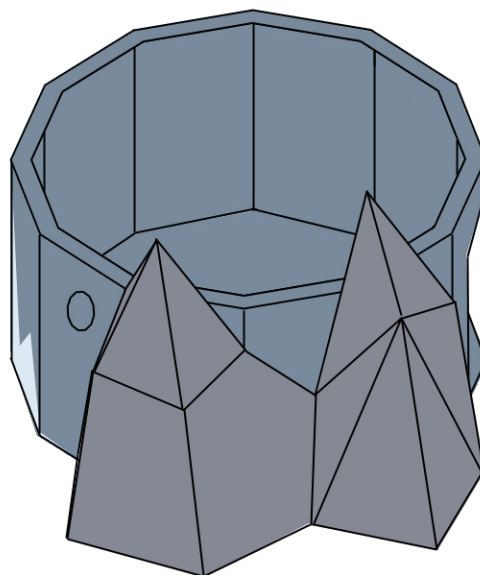
1. Cut out the piece and fold the sides and tabs along score lines.



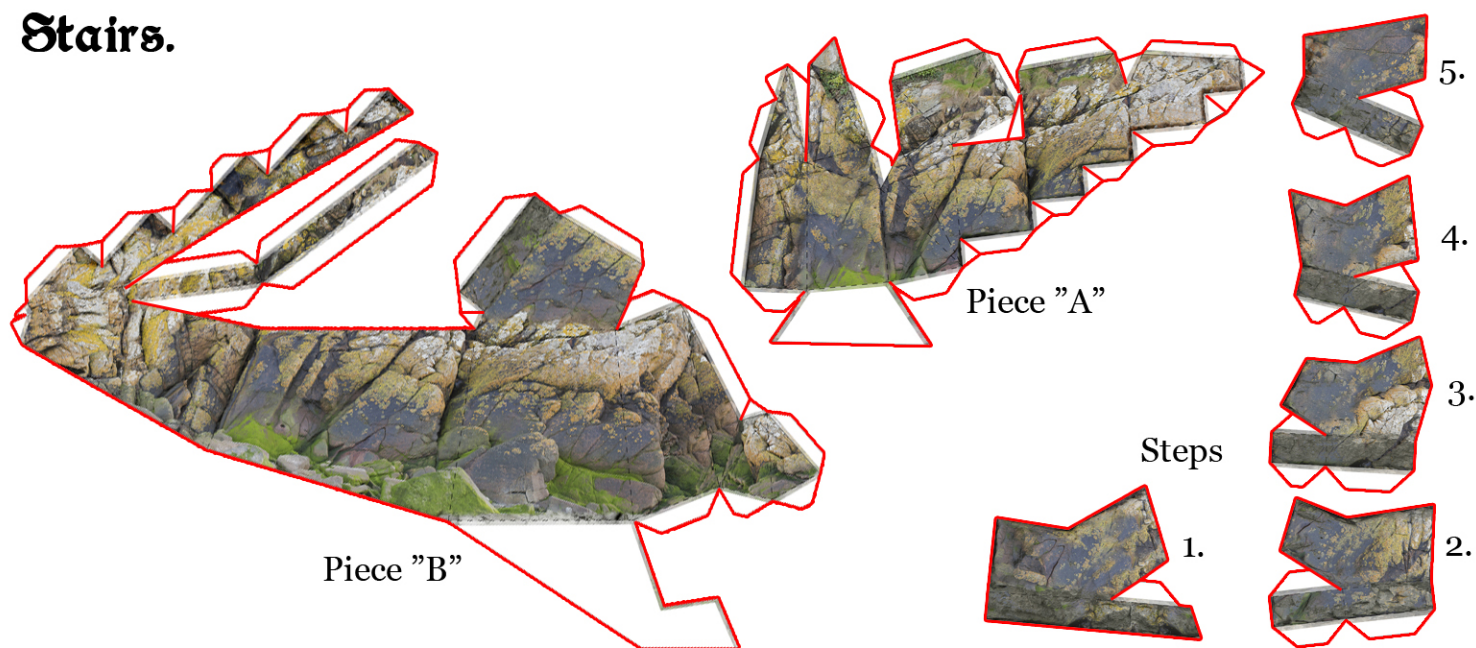
2. Glue its tabs to the white mark on the wall.



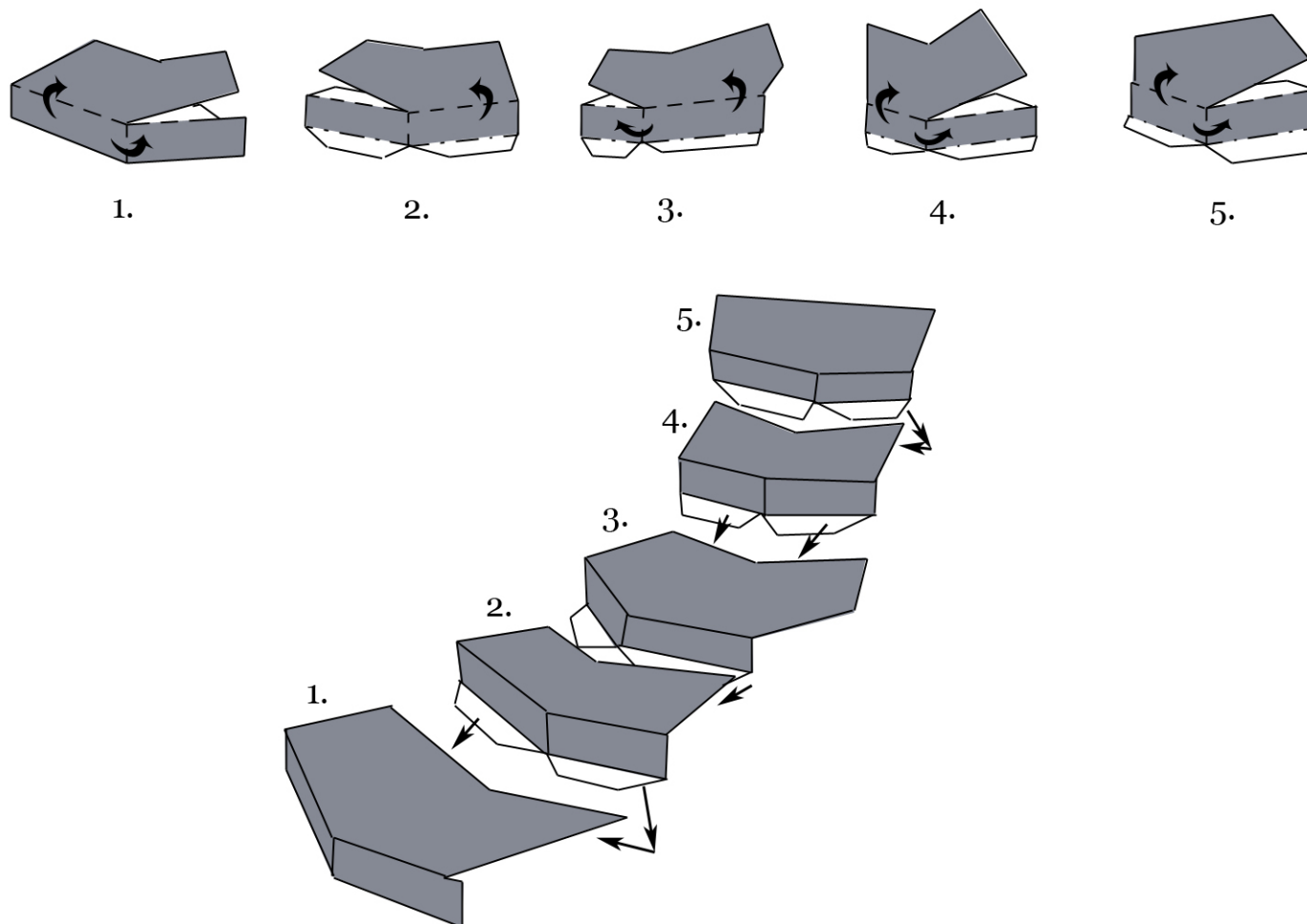
From the other side.



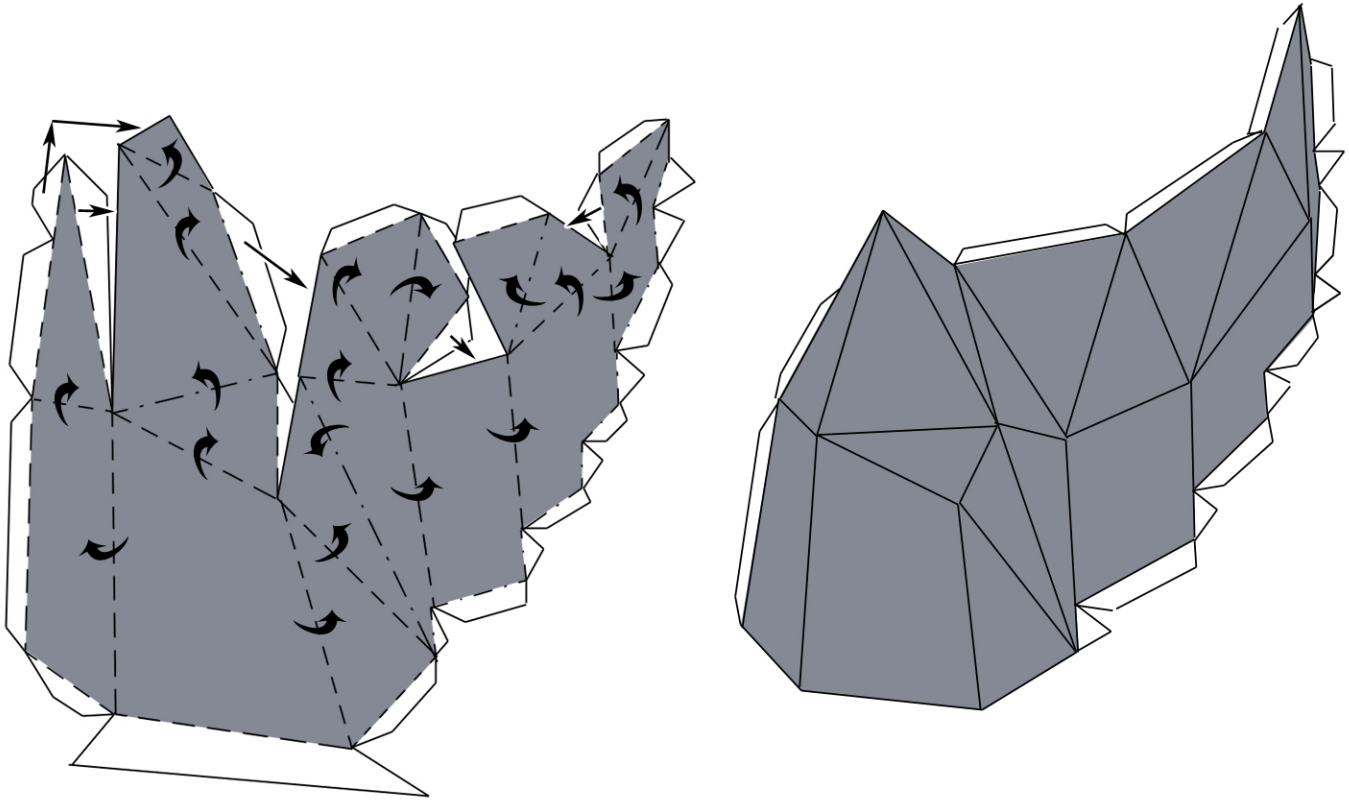
Stairs.



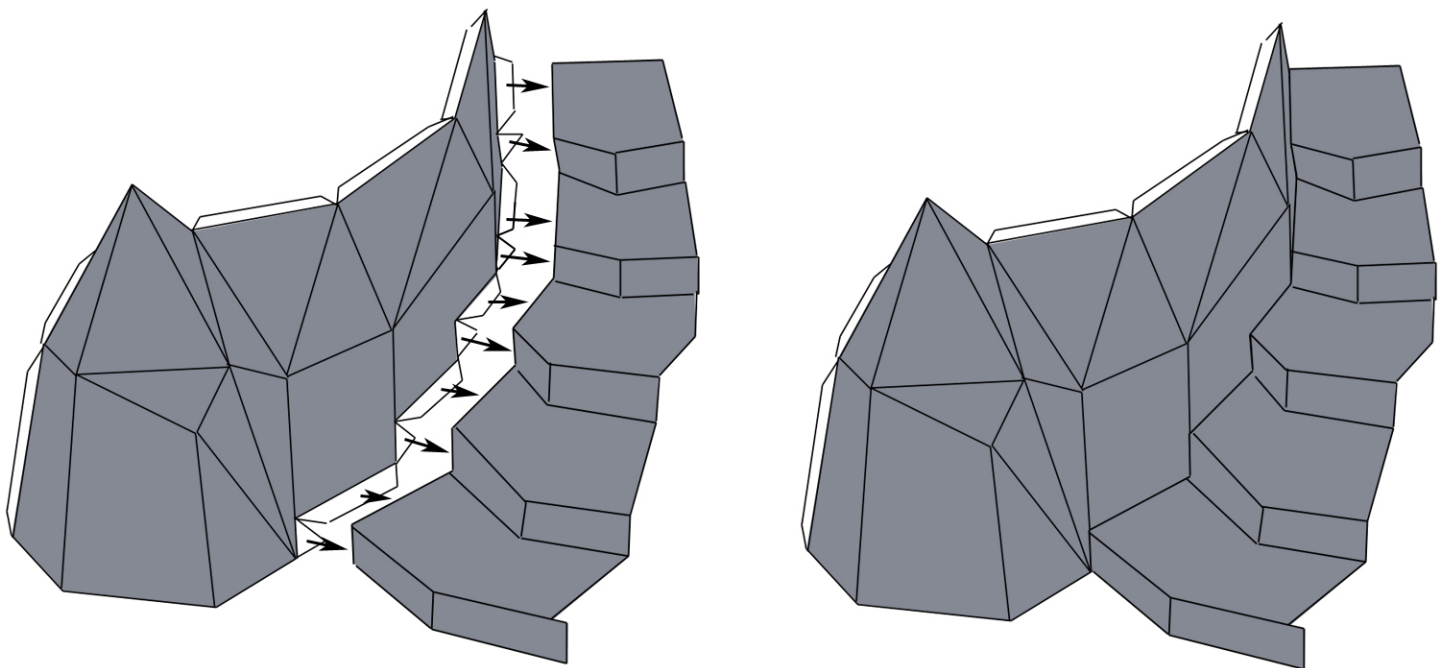
1. Cut out the pieces and fold the sides and tabs along score lines.
2. Glue the tab of Steps to their top. Glue the second Step to the first, the third to the second and so on. The first step will be the bottom and the fifth is the top.



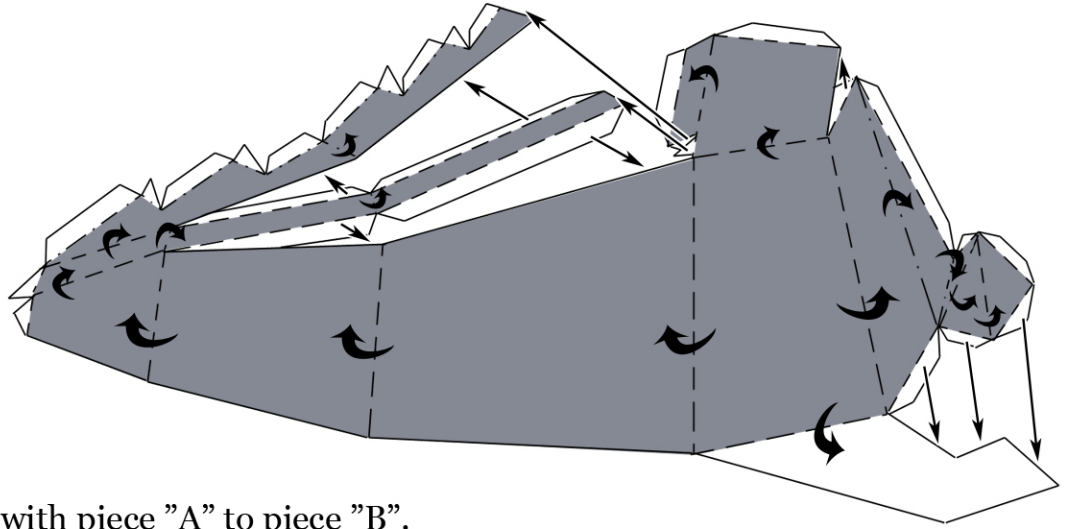
2. Glue the tabs to the sides on the piece "A".



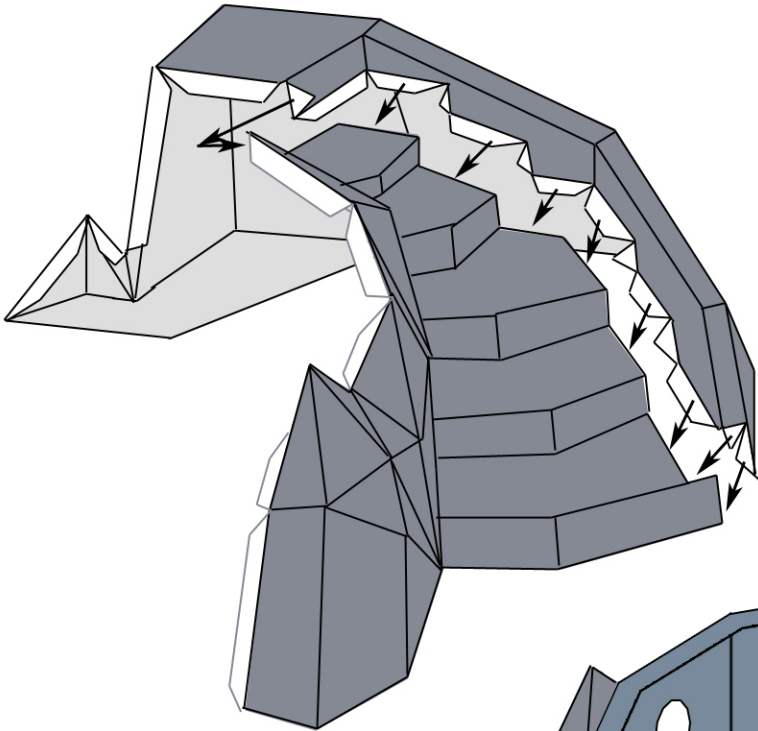
3. Glue the Stairs to the piece "A".



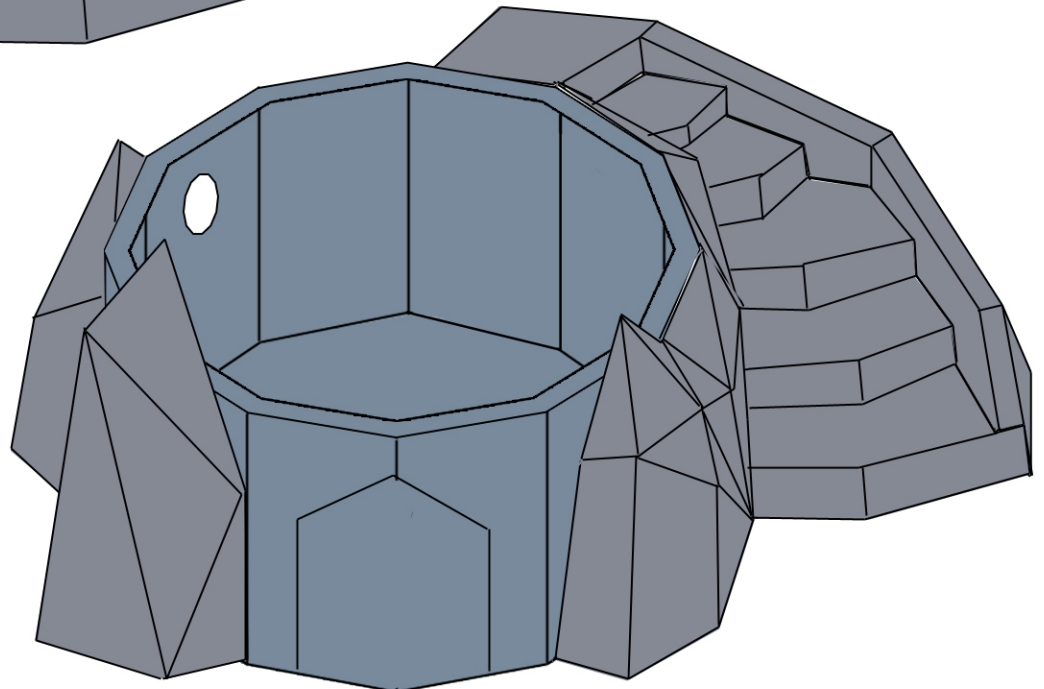
4. Glue the tabs to the sides on the Piece "B".



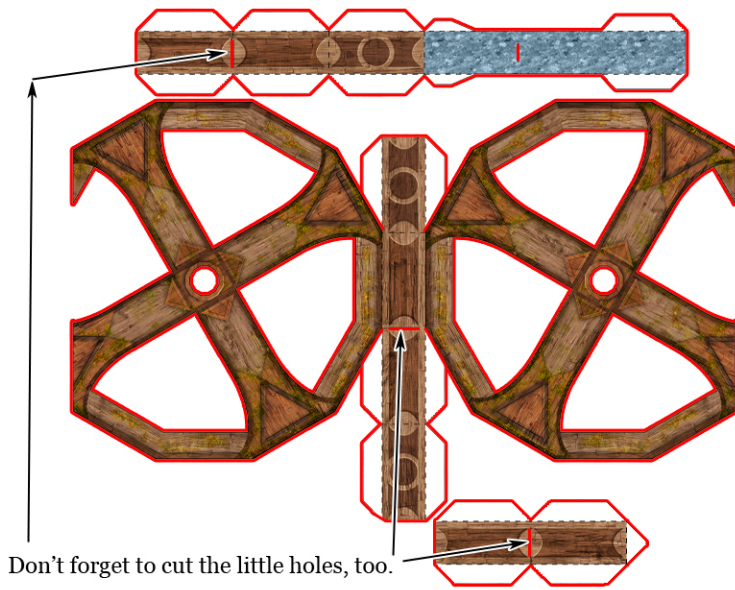
5. Glue the Stairs with piece "A" to piece "B".



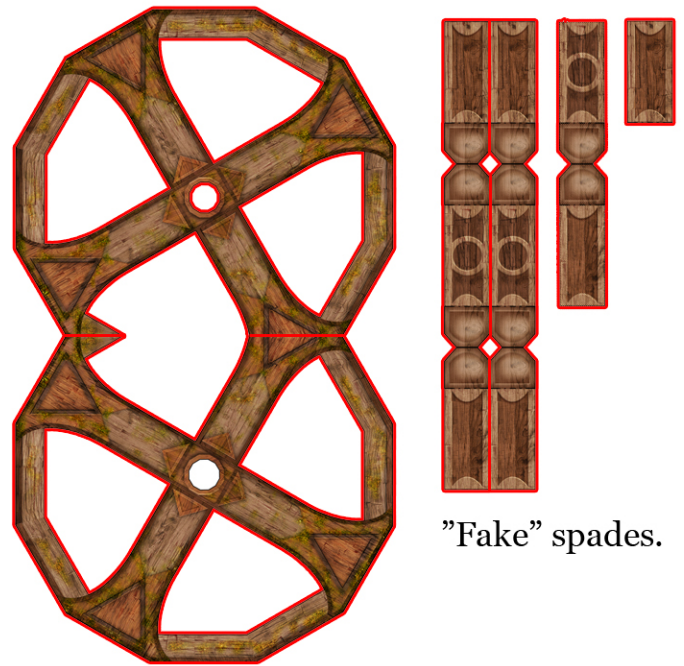
6. Glue the Stairs with piece "A" and piece "B" to the wall.



Mill-wheel.

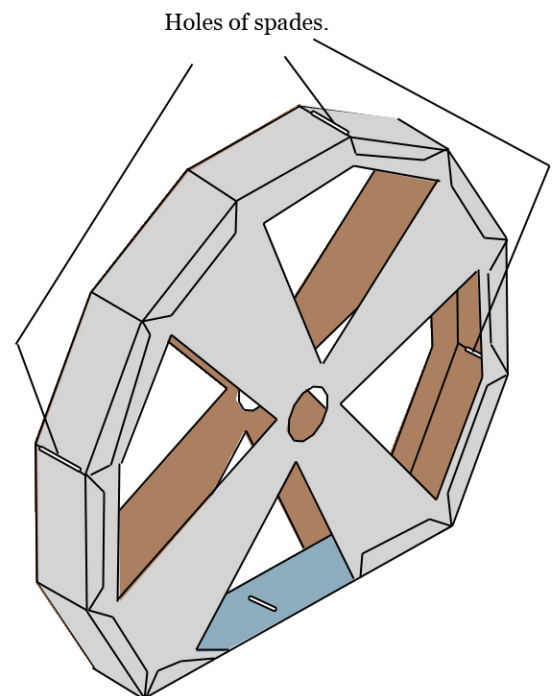
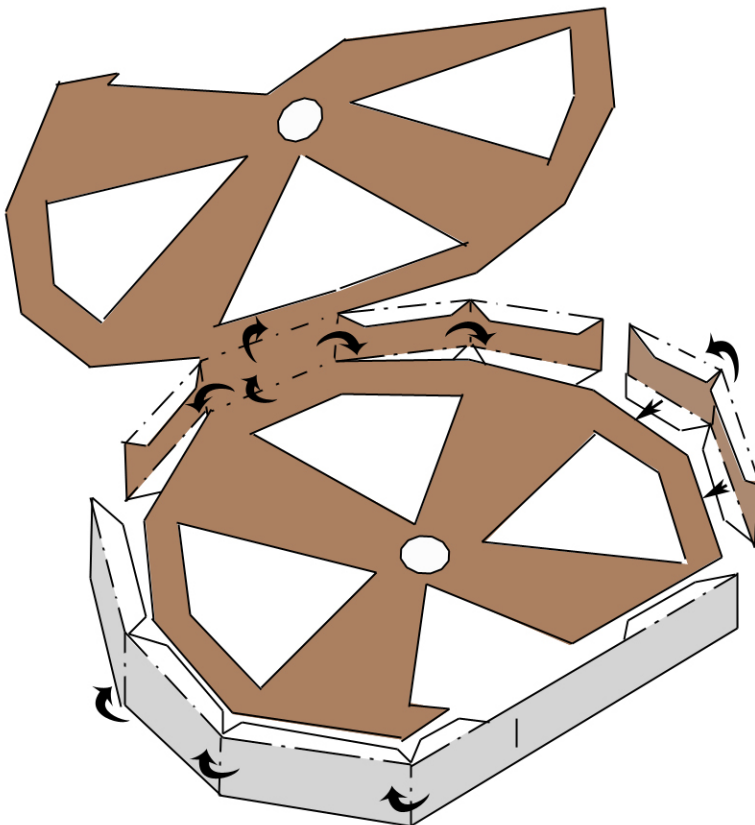


Inner side of Wheel.

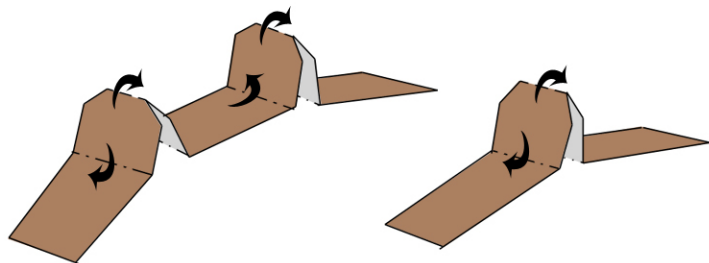


Outer Side of Wheel.

1. Cut out the pieces and fold the sides and tabs along score lines.
2. Glue the tabs on the sides of "Inner side of Wheel" to its outer (white) sides. Glue the two smaller parts to the sides, too.

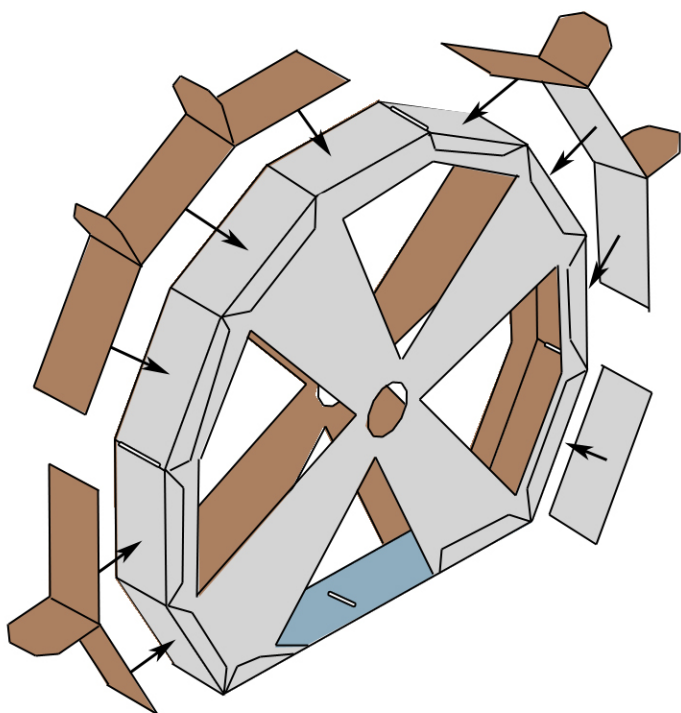


3. Now we fold the fake spades. Through the holes you will put the real spades but to the other sides we glue the sides and spades without long stick to the axle.

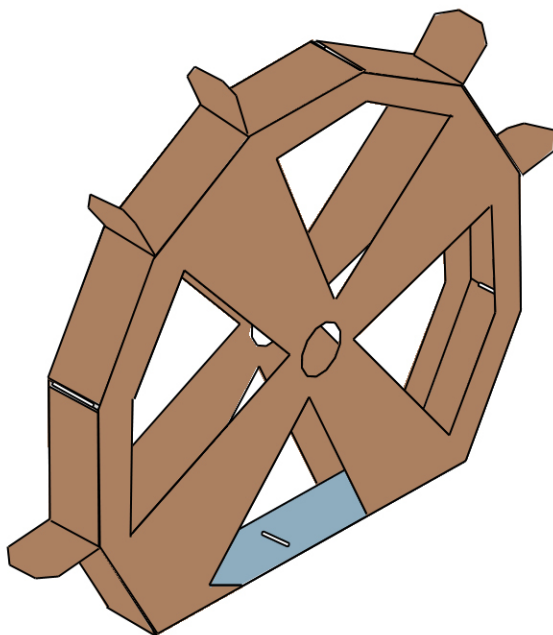
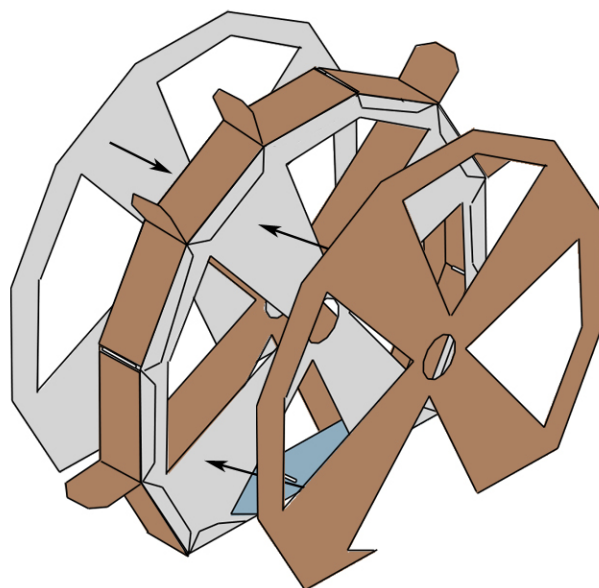


Glue the sides of spades to each other.

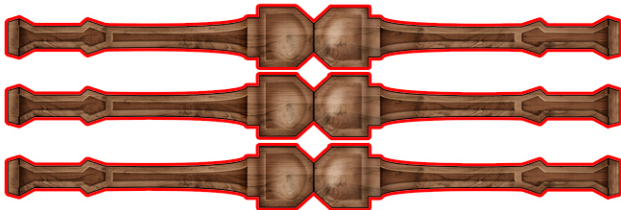
4. Next glue the parts onto the wheel.
Watch the holes that you cut to the long spades and let them free.



5. Glue the two outer sides onto the Wheel.



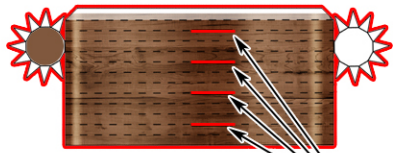
Mill-wheel.



Long Spades.

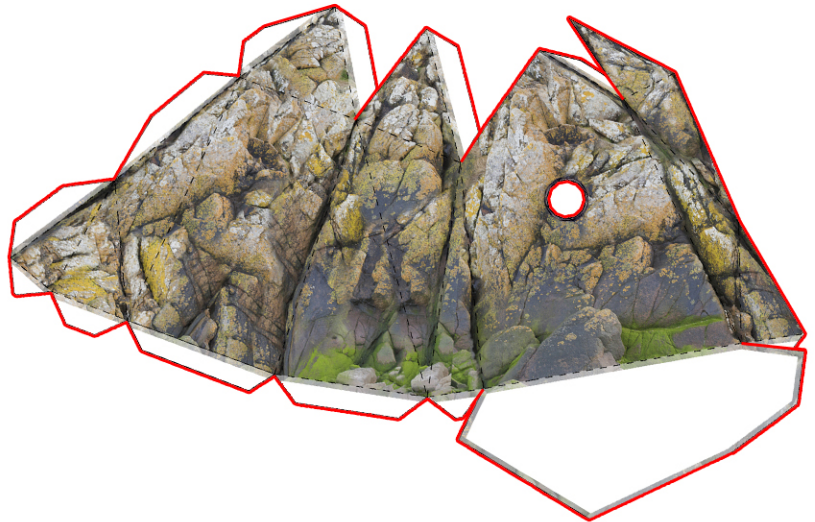


Short Spade.



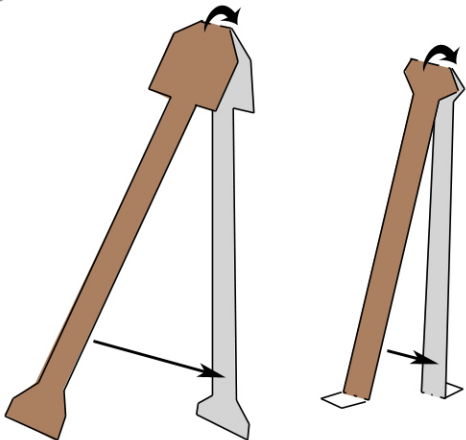
Axle.

Holes of Spades.

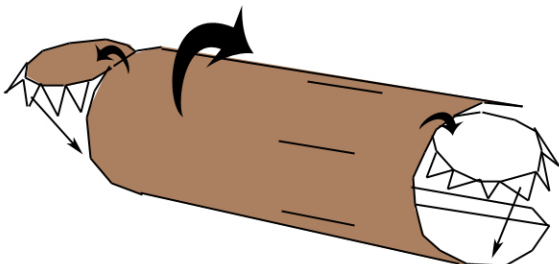


Wheel holder rock.

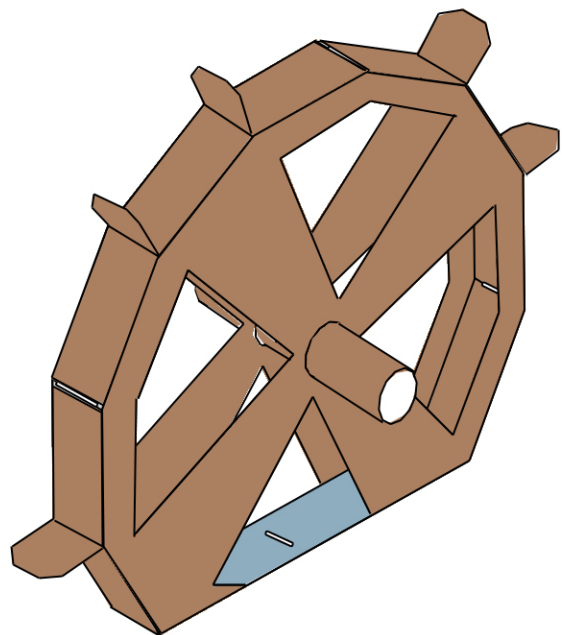
1. Cut out the pieces and fold the sides and tabs along score lines.
2. Fold the Spades in half and glue the sides to each other.



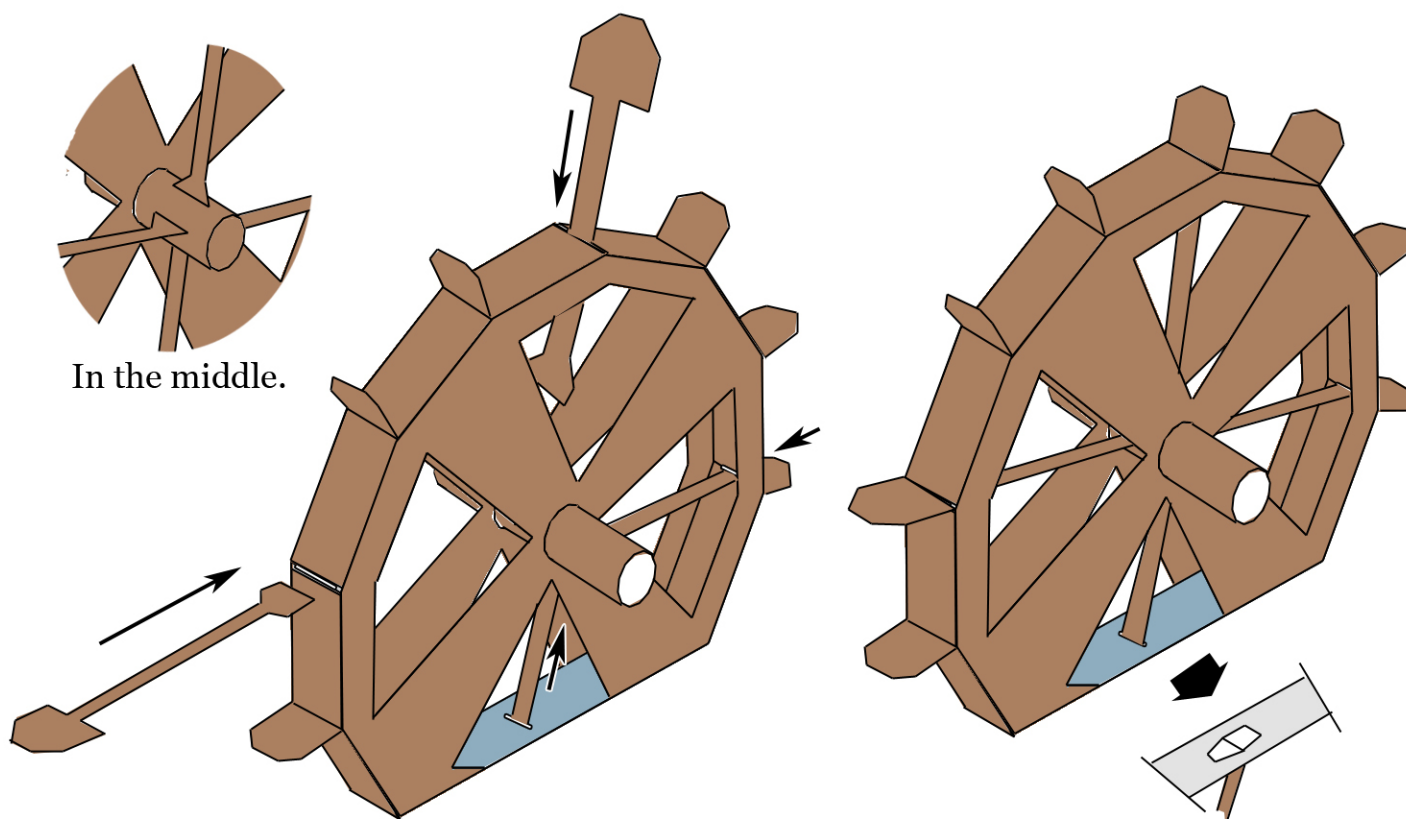
3. Roll the Axle and glue its tabs to the sides.



4. Put the axle through the center of Wheel.

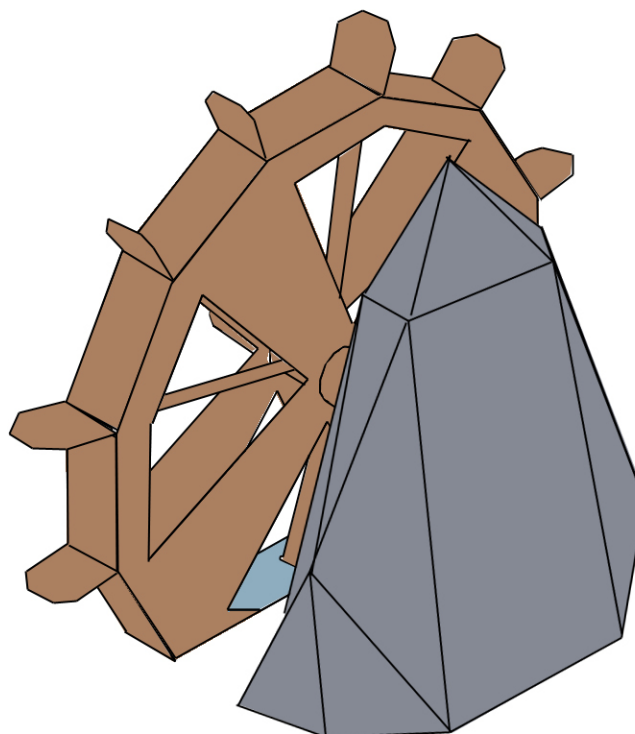
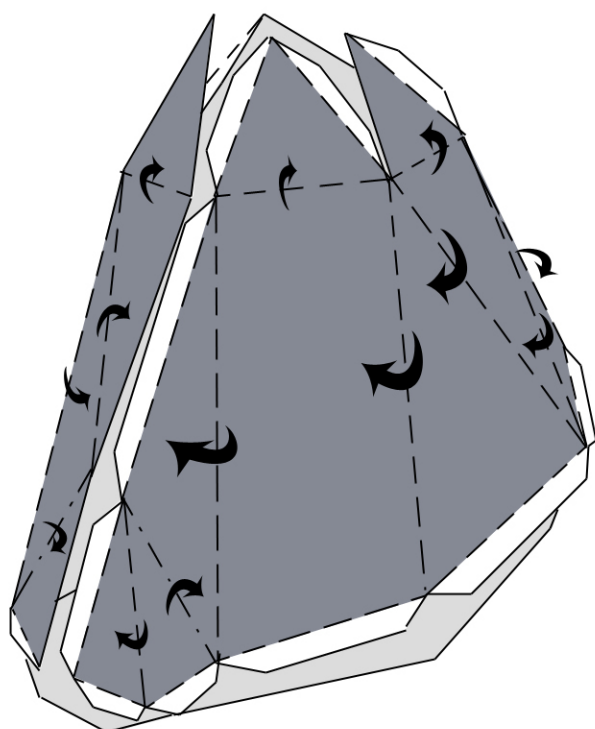


5. Put the Long Spades through the holes on the side of Wheel. Put their ends into the Axle. Put the end of Short Spade into the Axle and its other side with the tabs through the bottom of Wheel. Glue down these tabs to the white side.



6. Glue the tabs to the sides.

Put the Mill-Wheel into the rock.



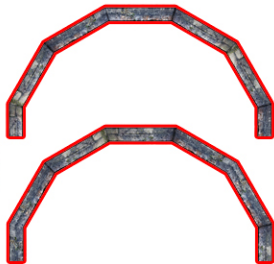
Storey.



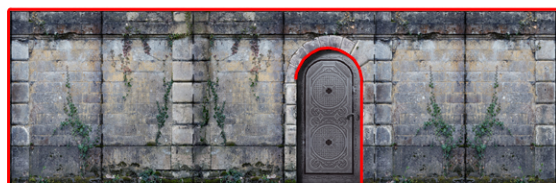
Bottom of Floor.



Top of Floor.



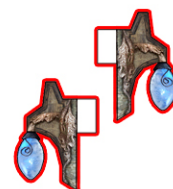
Top of Walls.



Outer walls.



Inner walls



Lamp.

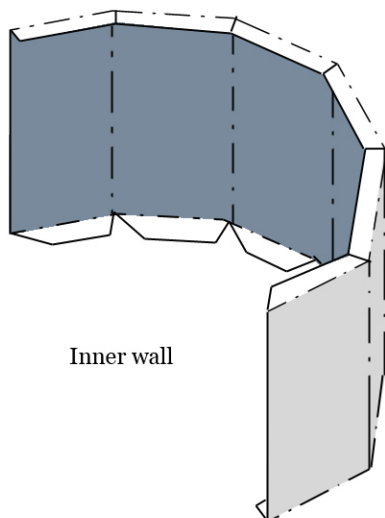
1. Cut out the pieces and fold them along score lines.



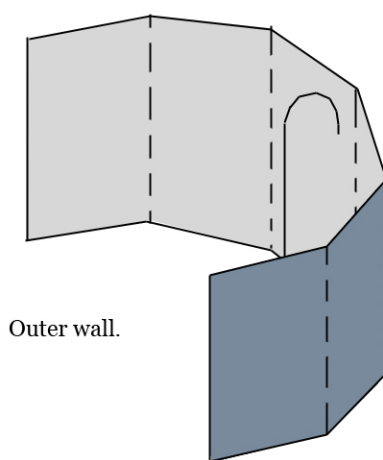
If you would like to open the doors and windows, cut along these lines as well. Watch the handle on the doors.



2. Fold the sides and the tabs of walls along score lines. The inner side is the side with tabs and the outer side is the side where you can see brick.

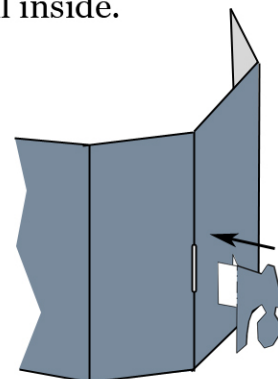
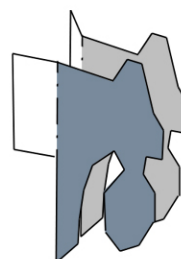


Inner wall

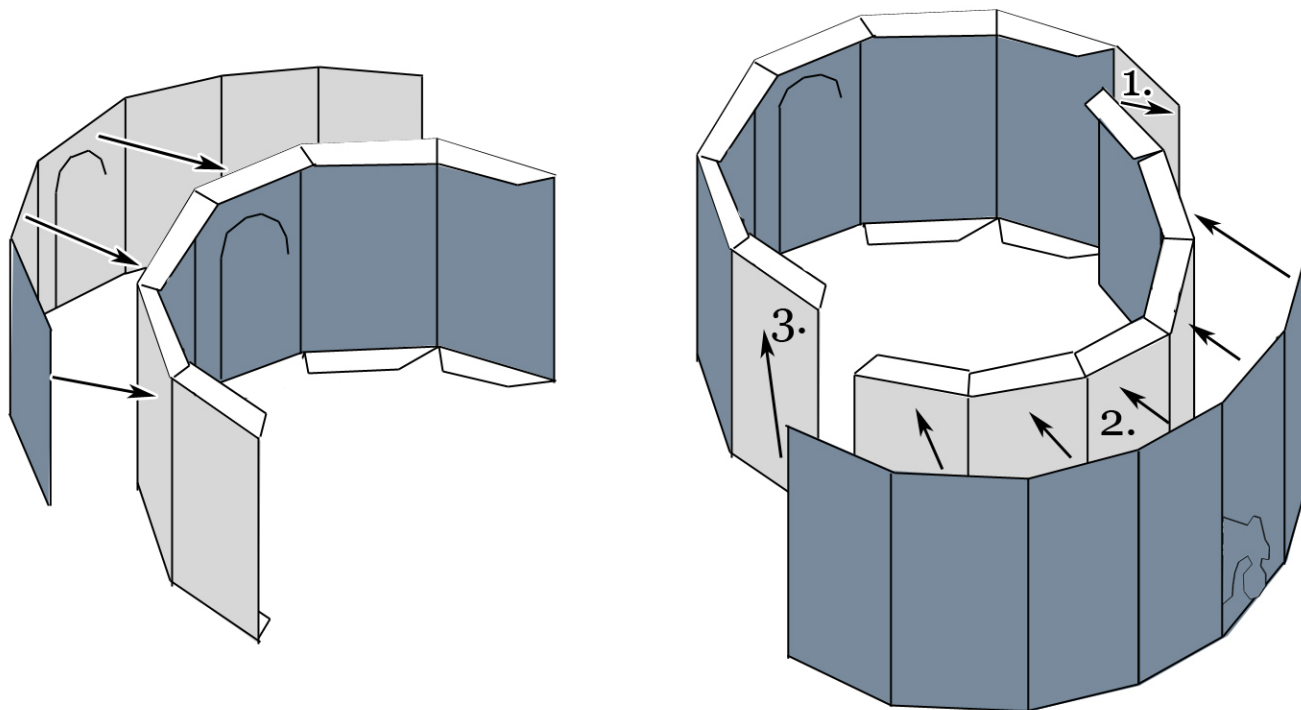


Outer wall.

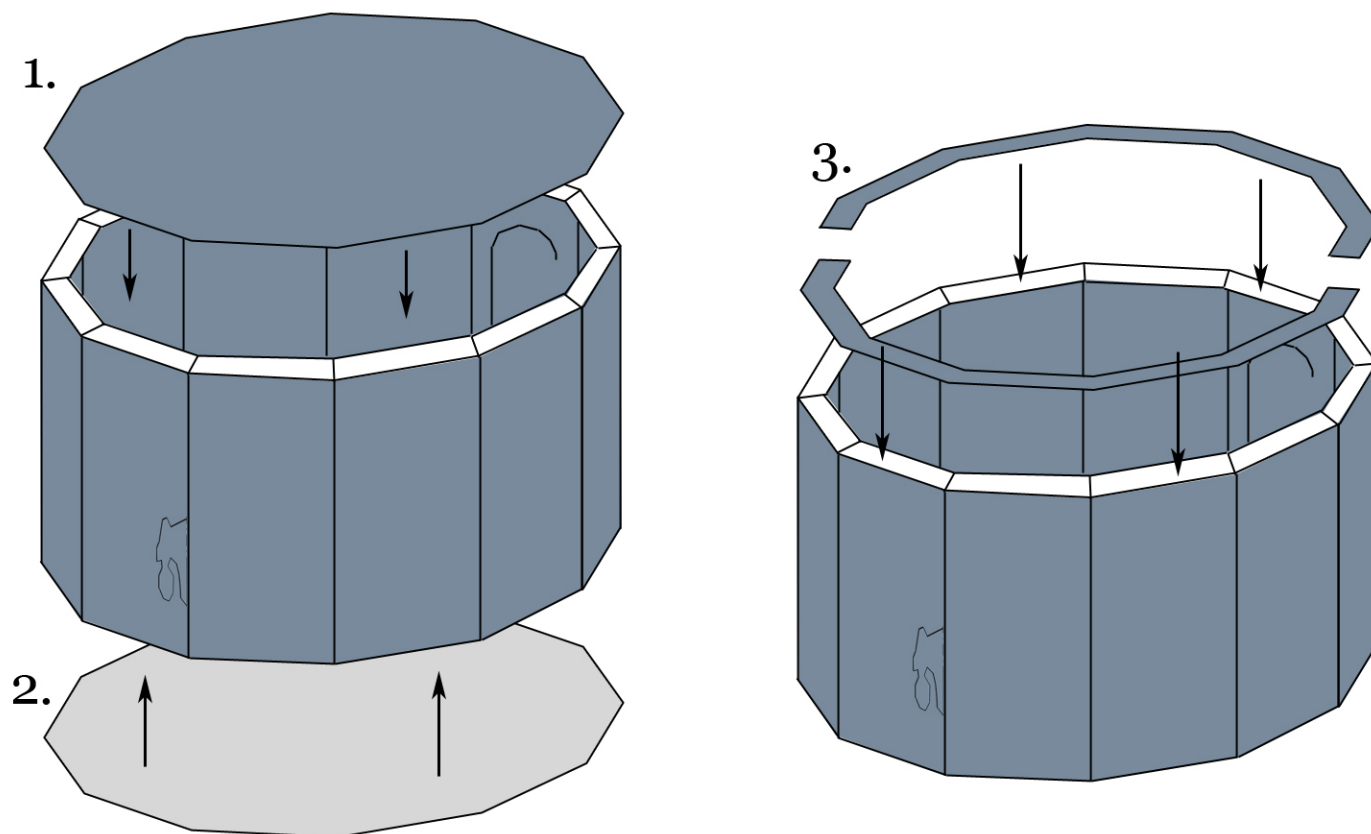
Glue the two sides of Lamp to each other next put it through the hole on the outer wall. Glue its tabs to the white side of wall inside.



3. First, glue the two wall pieces with doors to each other, then glue the other wall section to the first wall section to make a ring. Check the doors and windows at every sides, be sure about they are on the same piece.

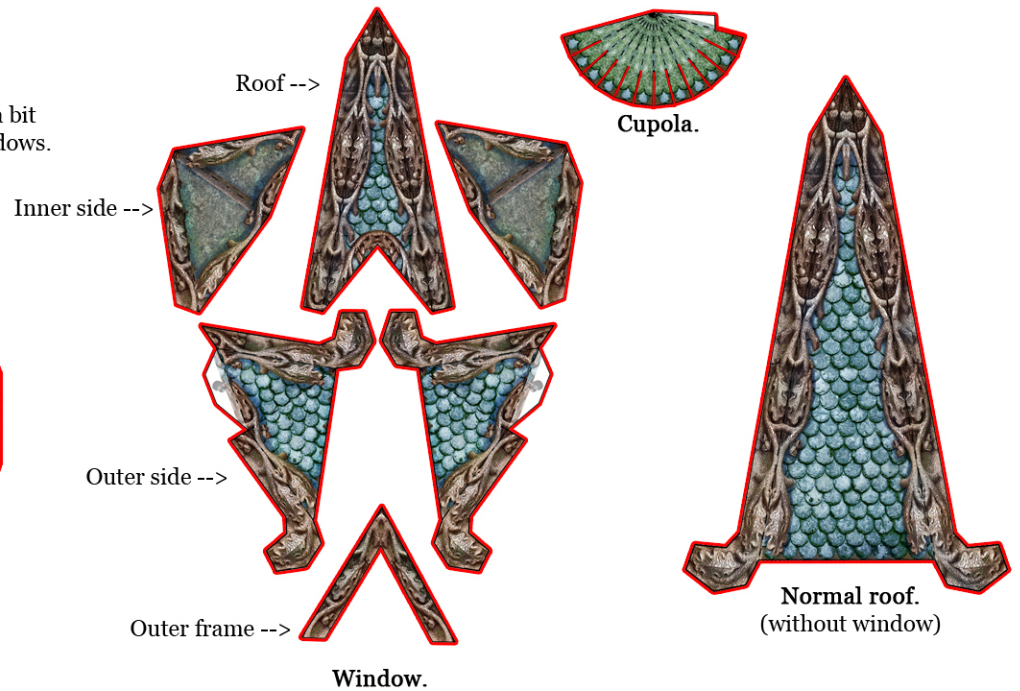
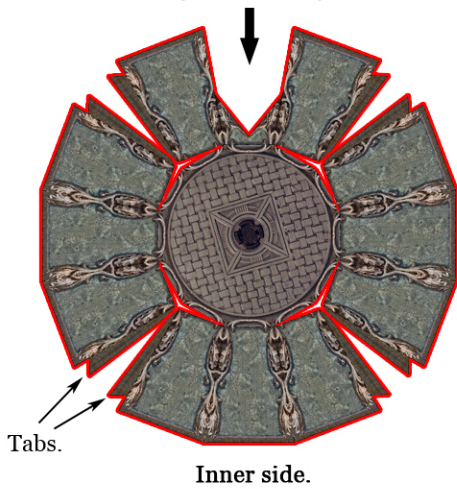


4. Put the "Top of Floor" piece into the circle and glue it to the tabs below. Next, glue the "Bottom side of floor" to the other parts. As a final step, glue the two half rings (top of walls) to the top tabs.



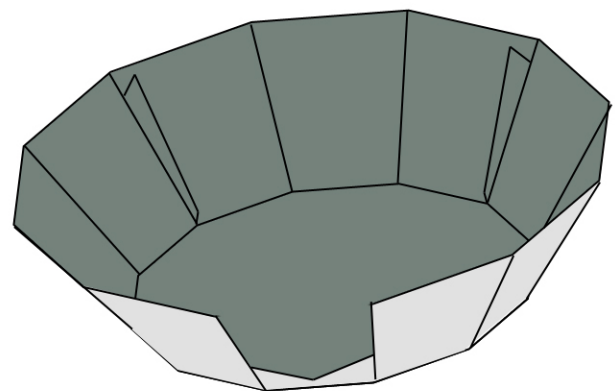
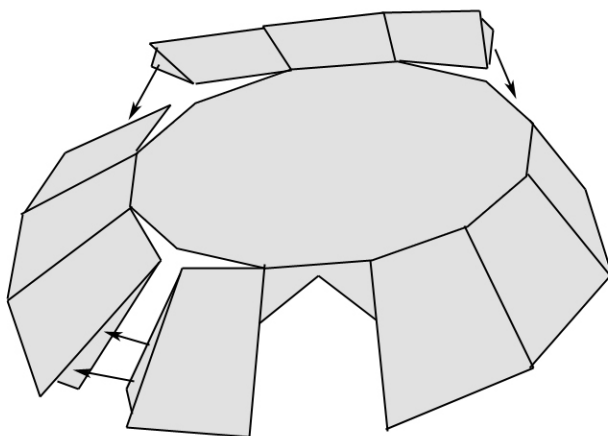
Roof Pieces of roof:

Perhaps your version of the ceiling looks a bit different. It depends on the number of windows. Currently we have only one here.



1. Cut out the pieces. The roof is one of the hardest piece of this building and if you have more than one window the assembly and cutting will take a bit longer.
2. Start the assembly with the "Inner side" of the roof.
 2. Fold the sides along the score lines, then glue the tabs to each other. These tabs are going to place the roof along the top of the wall and prevent it from slipping.

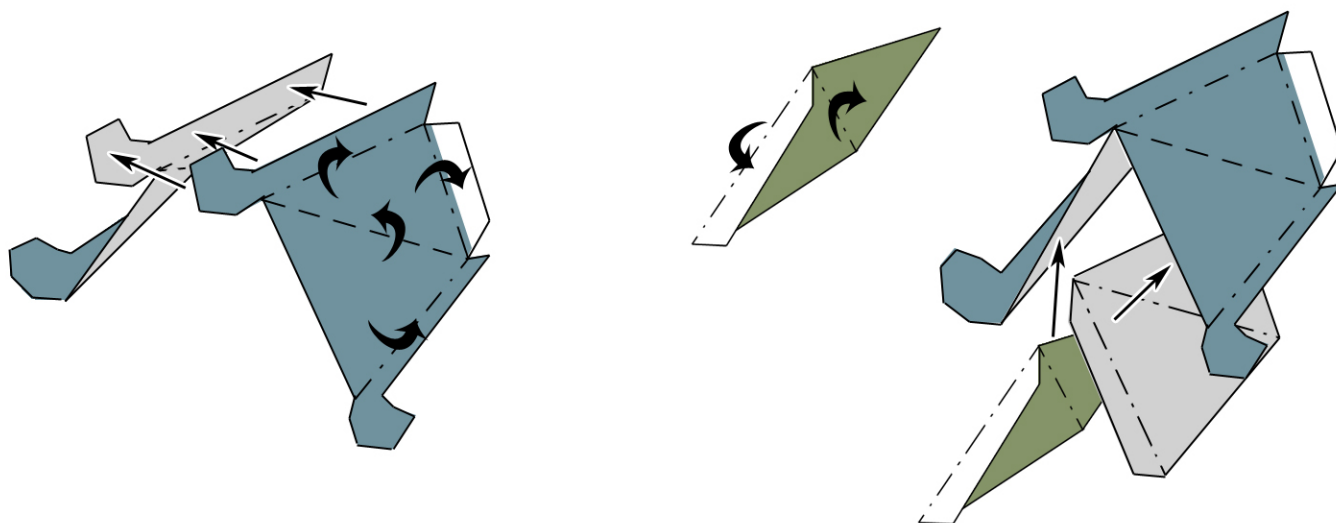
Upside-down view:



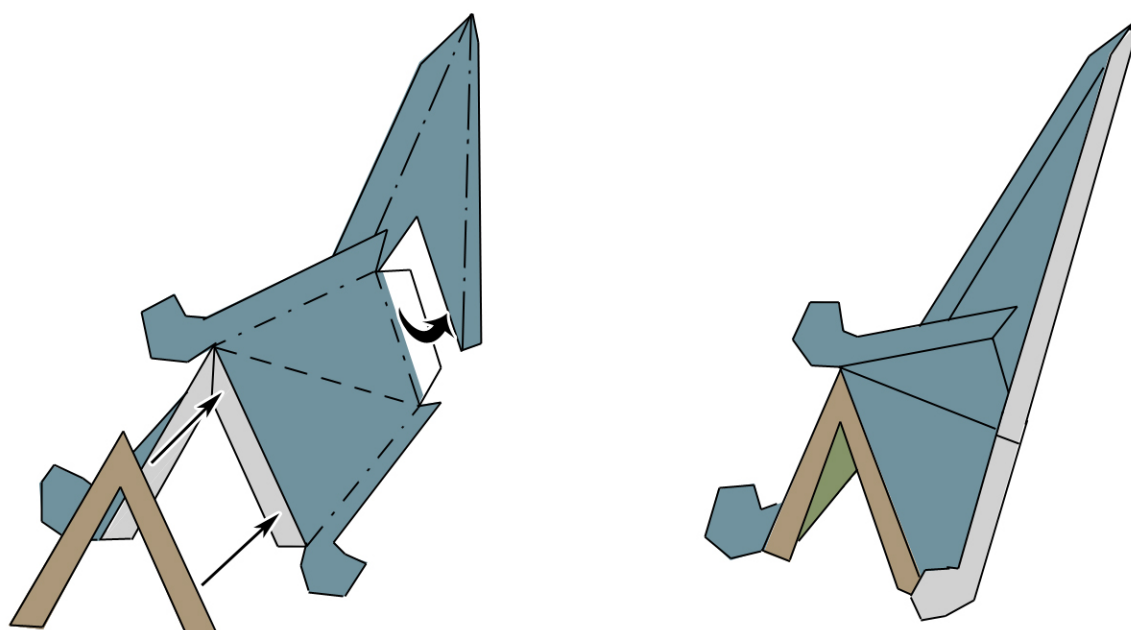
3. Next, we continue with the window. If you have more windows, you'll have to repeat these steps for each one. Fold all sides and tabs along score lines.

4. Glue the two "Outer sides" to each other at their top (ornament).

5. Next glue the "Inner sides" of widow to the "Outer sides".

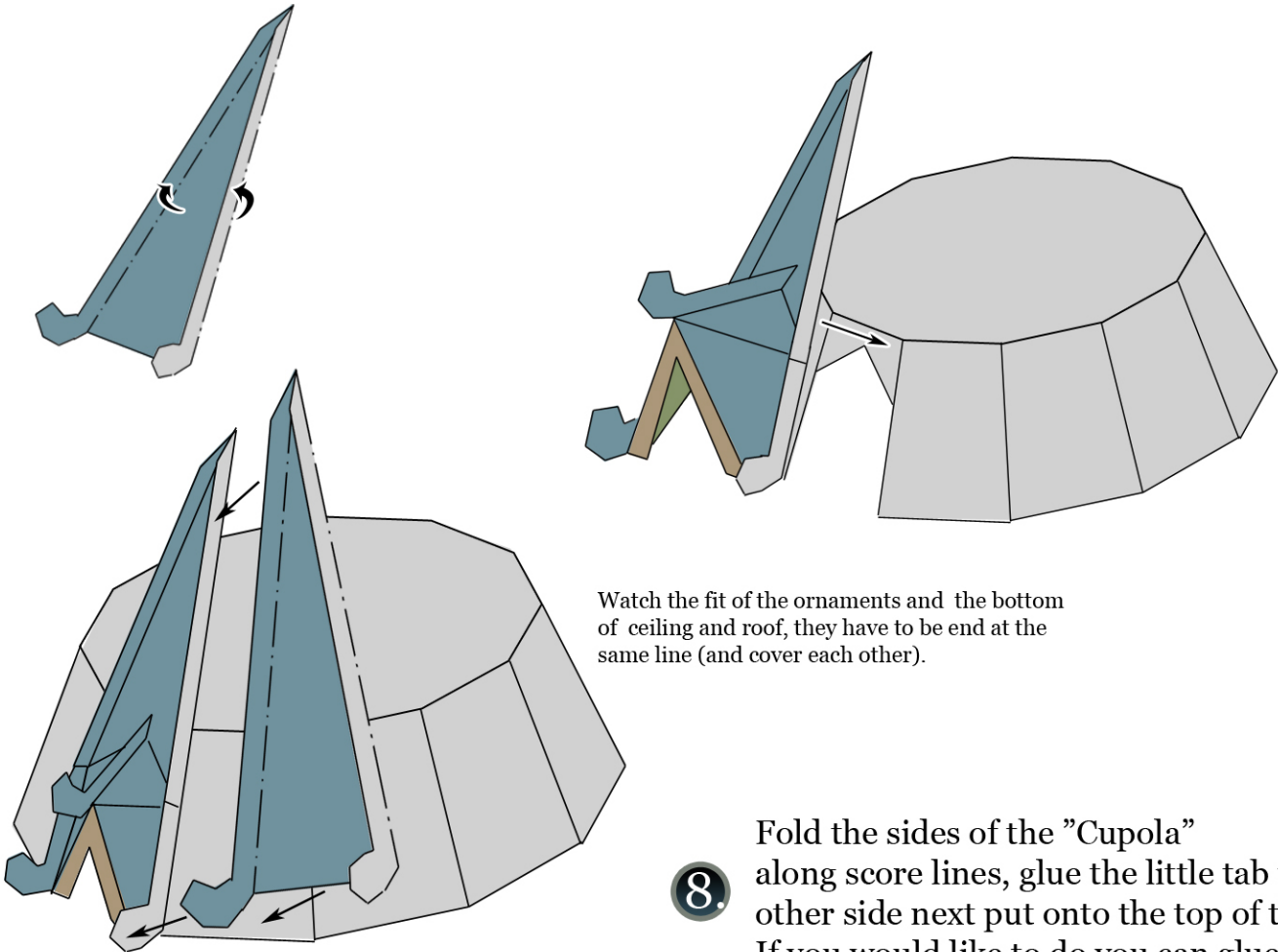


6. As final steps, glue the tabs of the window to the white side of the roof, then glue the "Outer frame" to the front of the window.

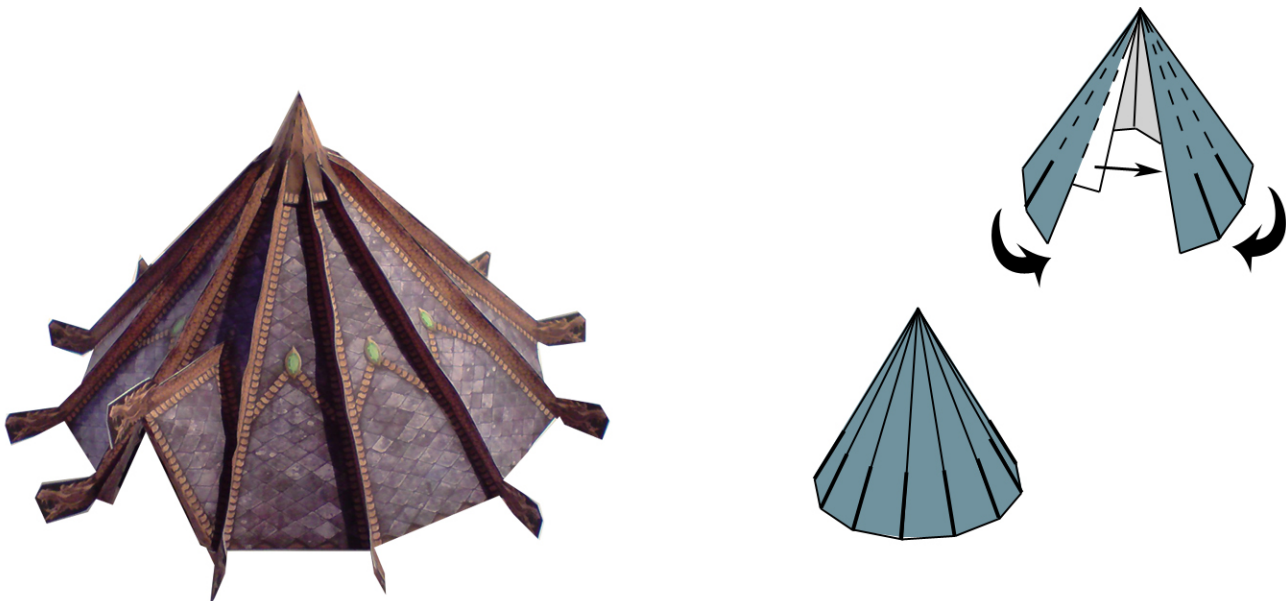


Fold the ornaments on the "Normal Roof" pieces along score lines.

7. Next, start to glue down the roof pieces to the "Inner side" of the roof (ceiling). First, glue down one of them, and then after that glue the next part of the roof to the previous one and to the ceiling. Continue gluing them down one by one.

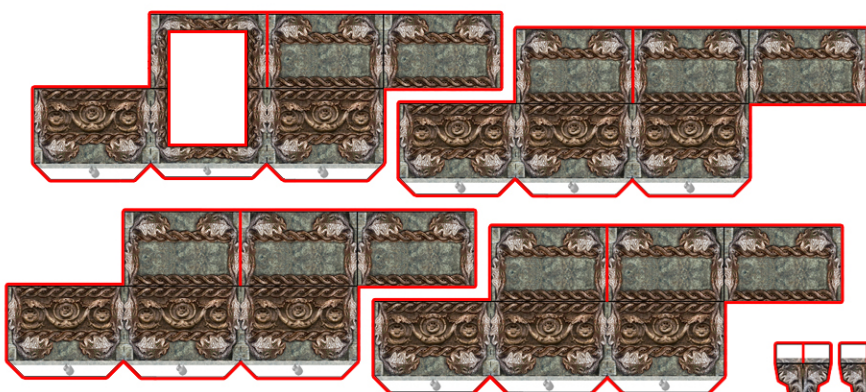


8. Fold the sides of the "Cupola" along score lines, glue the little tab to its other side next put onto the top of the roof. If you would like to do you can glue it down.



Roof

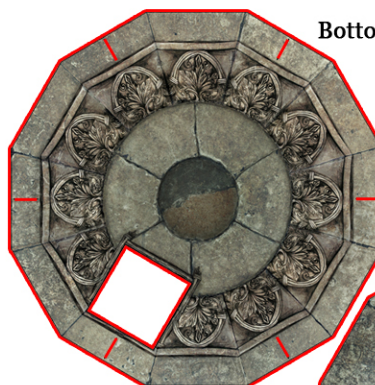
Pieces of wall:



Walls.



Extensions.



Bottom of the floor.

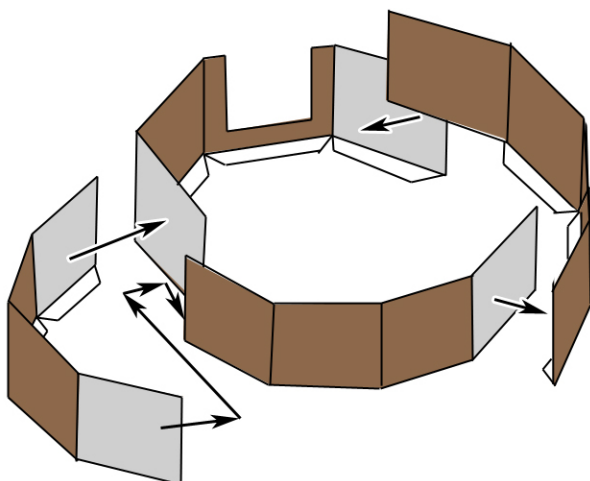
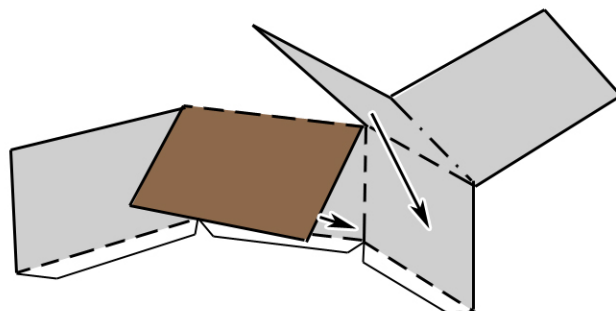
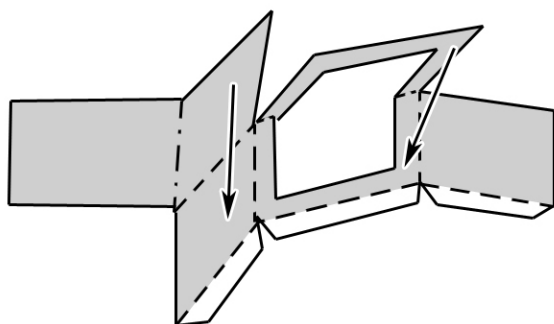


Inner side of the floor.

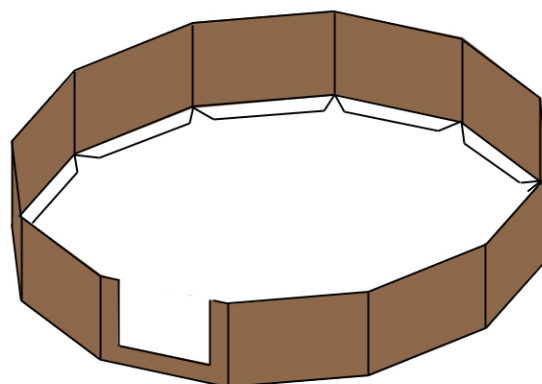
1. Cut out the pieces and fold them along score lines.

2. Start the assembly with the Walls. The upper sides of the pieces will be inside the building. You have to watch your windows on your roof. Currently we have only one window but if you have more of them you need to watch their place on the roof and glue the wall pieces with holes into the same array.

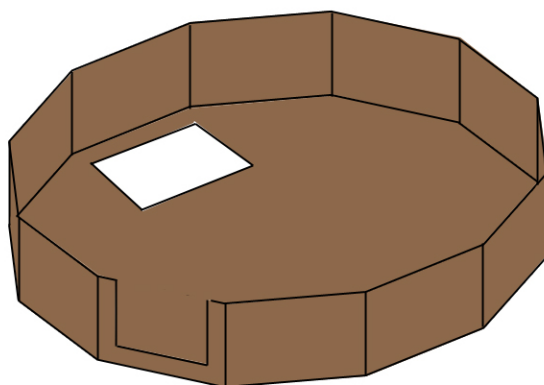
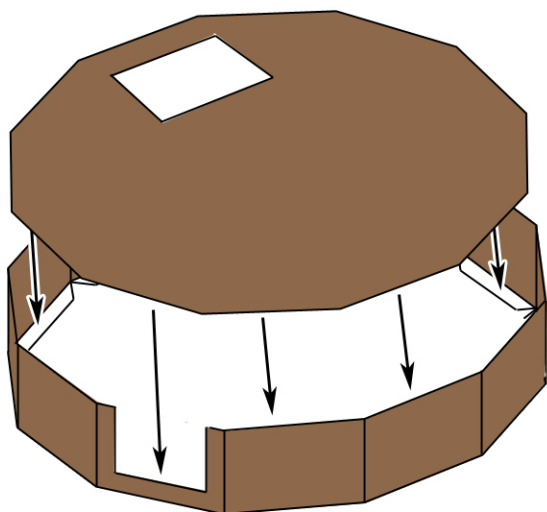
3. Glue down the top of the walls on all four pieces.



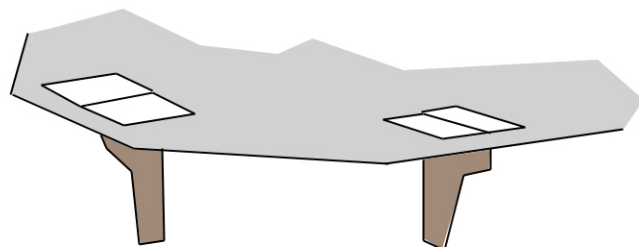
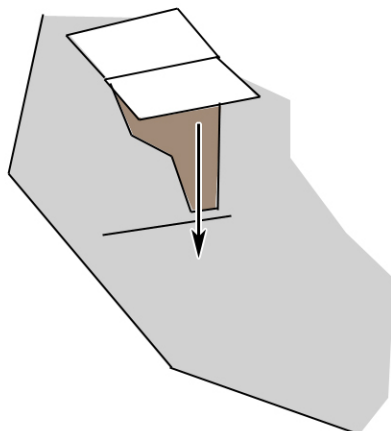
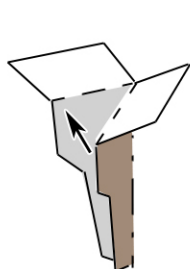
Glue all four pieces to each other.



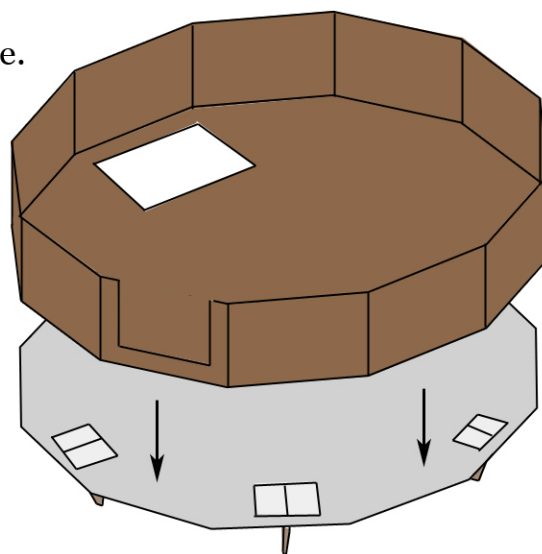
4. Insert the "Inner Side of Floor" into the wall ring and glue it to the tabs.



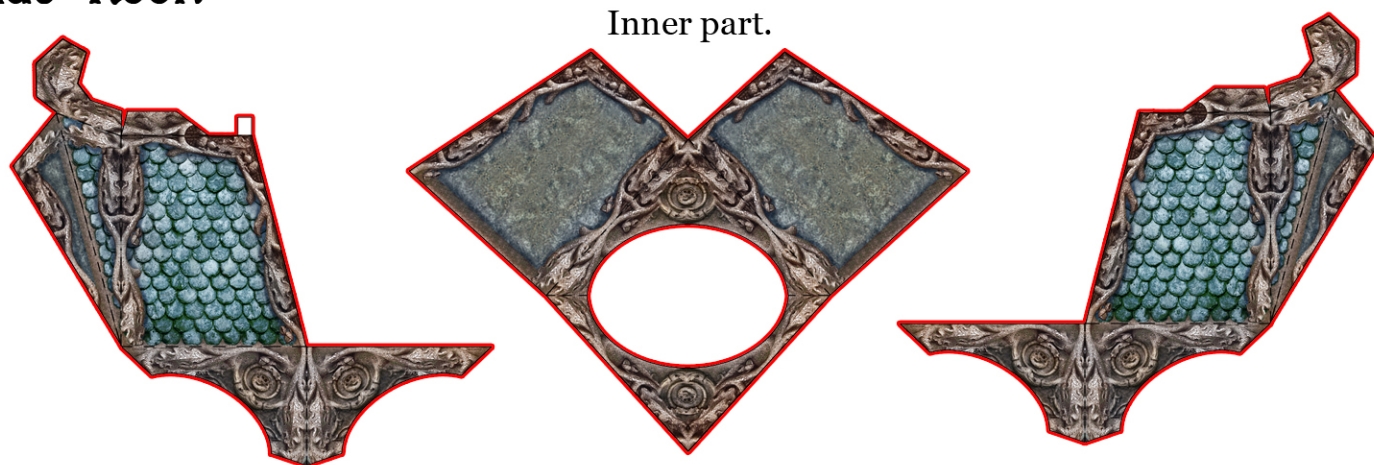
5. Fold the little extensions in half, glue the sides together, and slide them through the holes in the bottom of the floor. Next, glue the little wings to the white side of floor.



6. Glue the top side with the walls to bottom side. (Watch the hole of stairs.)



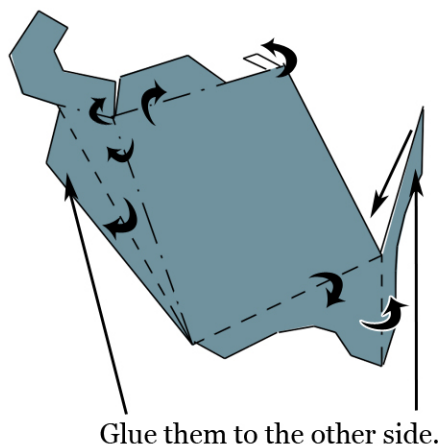
Side Roof.



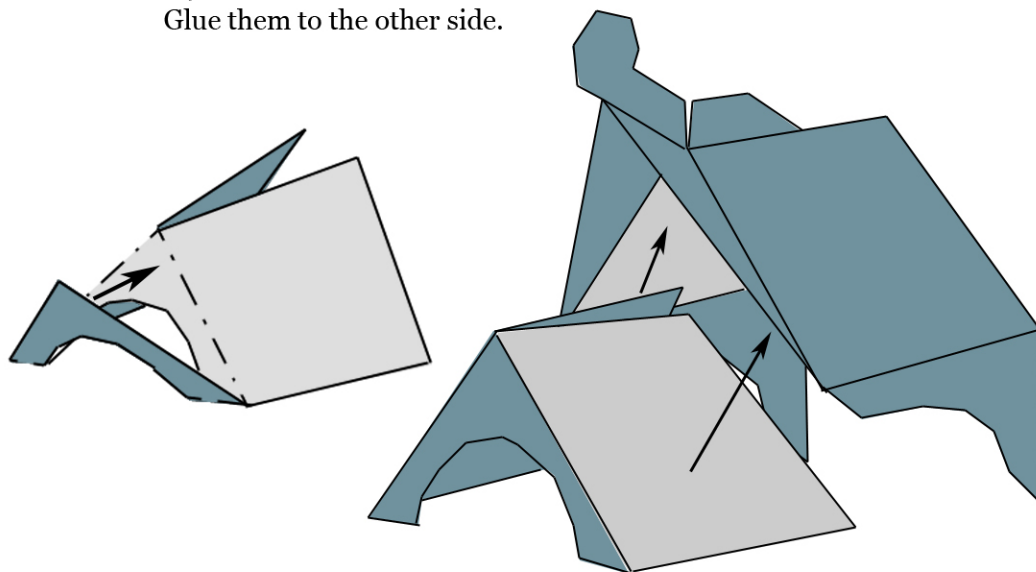
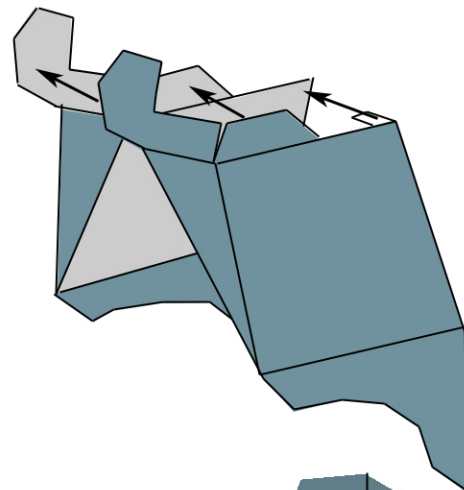
Side Roof - right.

Side Roof - left.

1. Cut out the pieces and fold the sides and tabs along score lines.
2. Fold the triangles into half and glue them to the white side of roof on the Left and Right piece.



3. Glue the two sides to each other at their ornament and with the little tab on Side Right.

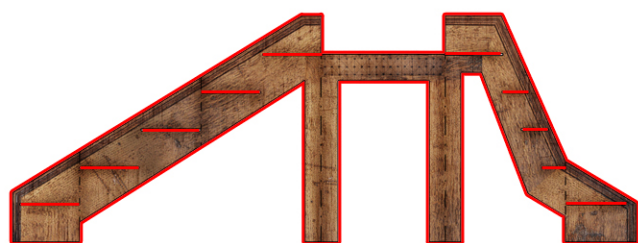


Push it onto the top of Lamp of First Floor.

4. Glue the inner part to the inside of Roof.

Stairs

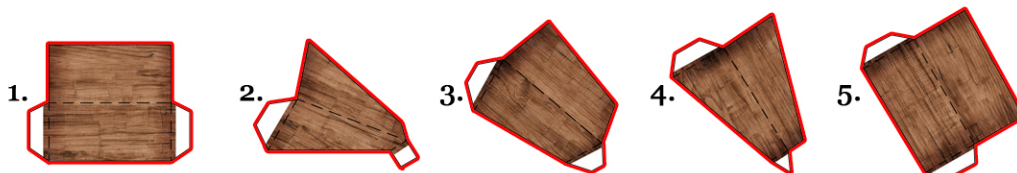
Pieces of wall:



Inner side of Stairs.



Outer side of Stairs.

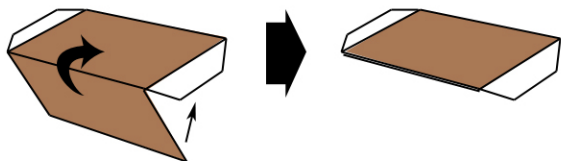


Pieces of Steps.

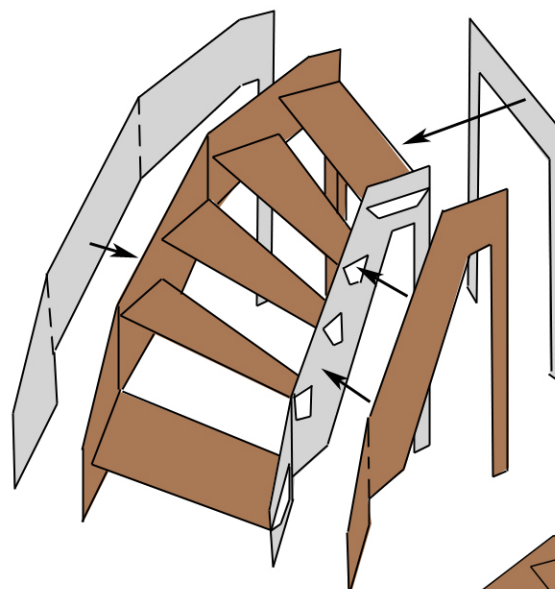
Watch the numbers on them,
the first will be the bottom and the fifth is the top.

1. Cut out the pieces and fold them along score lines.

2. Fold the pieces of Steps in half and glue their sides to each other.
Don't glue the tabs to the sides.



4. Glue the parts of Outer Side of Stairs to the inner side.



3. Push the Steps through the holes on the Inner side of Stairs. Start at the either side and follow on the other. Glue their tabs to the white outer side.

