

DIRT CHEEP™ STRONGHOLDS

from MicroTactix Games
www.microtactix.com



DISCLAIMER

We have made every effort to make sure that all parts fit together properly, but sometimes tolerances are tight and mistakes do happen. Test fit all pieces before applying glue. Some trimming may be required.

Before photocopying or printing these pages on cardstock, you may wish to assemble a test copy on plain paper to better understand the construction. A minimum of 65# cover stock is recommended for constructing the final models. Regular 20 lb. bond paper can be used, but these items were designed for a heavier stock for extra durability and coloring.

Tools Required:

Scalpel or sharp-bladed hobby knife

Metal ruler or straightedge

Cutting surface - a self-healing cutting mat is recommended, but a sheet of corrugated cardboard or even heavy poster board will work as well.

Glue - white glue, glue stick or wax stick. Double sided cellophane tape also works well. Rubber cement can be used, but will sometimes stain the cardstock or discolor colored inks and cause them to run.

A Note About Using White Glue

White glue contains a good deal of water. Too much glue will warp the card stock so that its almost unusable. Warping may also cause the parts to fit together incorrectly. If you use white glue, put a very thin coat on the glue tabs - the thinner the better. You can use a cotton swab or your finger to spread the glue thin. Remember to keep a damp paper towel handy to remove any excess glue.

PLEASE NOTE:

Each item has been marked with a series of Grey Lines that are an indicator that these lines are Fold or Score lines. All Tabs which are to be glued to hold the structures together are marked with a capital letter (G). Unless otherwise noted, all Glue Tabs fold inwards to the structure.

This small model was designed as an accessory to MicroTactix Dirt Cheep Strongholds. It can also be used in any situation where a quickly constructed, rudimentary blacksmith shop may be needed. The building will be constructed in 2 parts, the covered forge and the shed. Each part will have it's own separate roof. Note that each building has two sides. These sides will glue together, back to front on the inside unprinted areas, to create an interior and exterior of each structure. The panels that will be on the inside are on the bottom as you face the page on the horizontal.

Cut out and score the shed section as indicated. The white space on the third panel is to be cut out after the piece is dry. This cut out will form a doorway. The white space on the second panel will be the location for the forge. This space is not to be cut out. When dry, fold to the inside the tabs along the top of the walls and fold the post at the edge of the first wall in. Fold into a box shape and glue the post to the inside to close the structure. Make sure that the white space for the forge is to the outside.

Cut out and score the covered forge area. Glue together as above, but do not cut out the white areas between the posts before gluing. When dry, cut out all white areas. Fold down all tabs along the roof tops. When the covered forge area is dry, attach to the front of the shed by applying glue to the insides of the 2 posts along the ends. These posts do not fold, but are glued directly to the side walls of the shed. Set this section aside to dry.

To construct the forge, cut out and score as indicated. Fold the two sides in from the back. Fold the front panels to match the angles on the side walls, gluing all tabs to the inside. When dry, fold over the opposing wall and glue in place. When this piece is dry, attach to the shed wall in the white space. To construct the bellows, cut out and score. Fold down the back

and fold the tabs to the inside and glue. Fold up the foot pump. The bellows will attach to the forge on the right side.

On Page 2 are the roofs for each structure. The top roof (with the white box on it) is for the covered forge area and the bottom roof is for the shed. Note that the covered forge area roof will be folded in the middle. Both will construct by folding front to back and gluing together. When dry, make the final folds and attach to the tops of the buildings by applying glue to the tabs along the building tops and setting in place. Note that the hole for the forge chimney will require some trimming for a proper fit. It should also be noted that the covered forge area roof should be attached first so that the shed roof can be butted against it.

Also included in this set are 3 boxes and a work table. The boxes will construct by folding down all four sides from the top panel and gluing the tabs to the inside. The work table will construct by folding into a box and gluing the tab on the right edge to the inside. Fold down the tabs along the tops of the side panels, apply glue and set the table top in place. The anvil and 2 figures will construct as stand-ups. Fold in the middle and fold the 2 bottom panels to the inside. Glue one bottom panel on top of the other to form a triangle.

Now Available from MicroTactix Games!

DIRT CHEEP™ STRONGHOLDS



Print and assemble enough field fortifications to cover your tabletop and defend against the mightiest of armies! Earthworks with wooden palisades, watchtowers, archer shields and much more! Build a stronghold as large or as small as you need with our modular system!

Kent Dirckx, owner, operator and artist of Penguin Labs (which is located at www.penguinlabs.com) has graciously consented to allow us to include a cardstock tree with this set. If you haven't gone to their site and seen what they have to offer, you should check it out. Penguin Labs produces beautifully rendered cardstock scenery for a fraction of the cost of plaster or resin pieces. Penguin Labs is highly recommended by MicroTactix.

Tree Assembly Instructions

Step 1:

This Tree comes as a group of four images. Cut along the solid grey lines to get two pieces with two images on each piece.

Step 2:

Put glue along the back side of each piece. Fold each piece along the dashed line and press the piece together so the glued sides stick together.

Step 3:

Once the glue has dried, cut along the grey lines, creating two slots.

Step 4:

Slide the slots into each other.

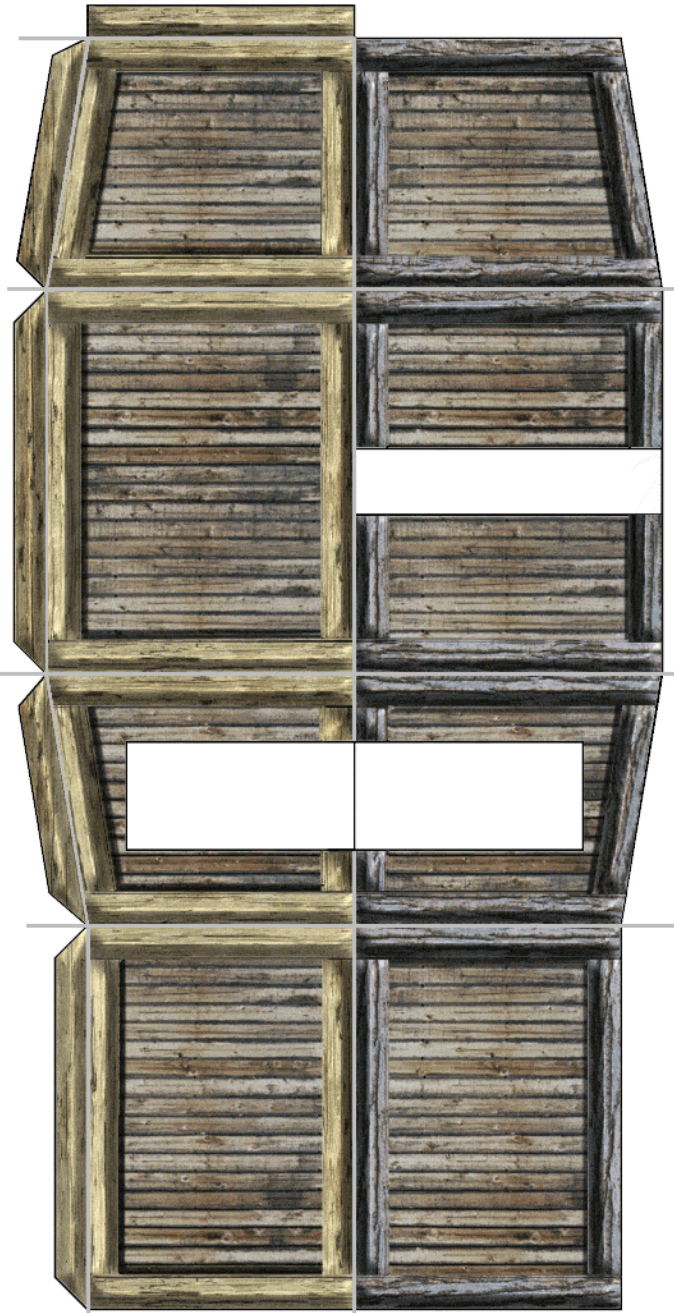
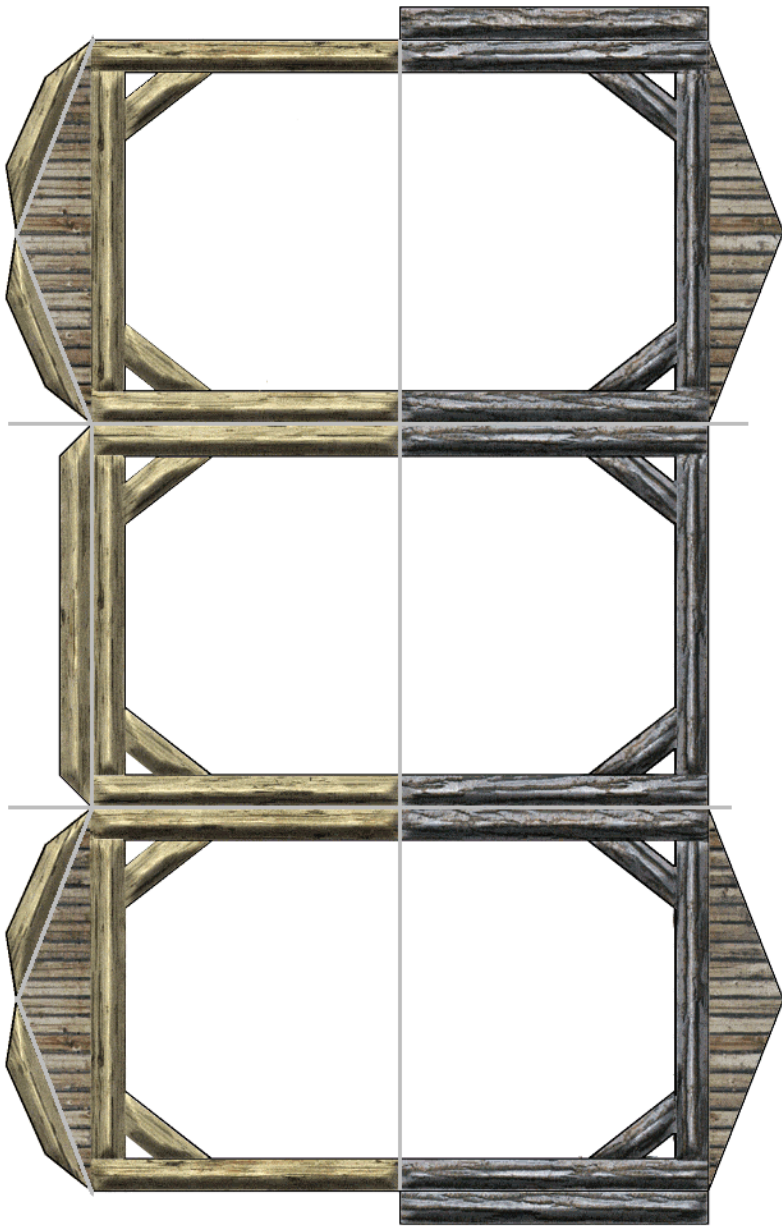
Step 5:

Position the pieces so they are at right angles to one another and stand up your tree!

Looking for the perfect compliment for this and other MicroTactix role-playing aids? Look no further than Penguin Labs! Two great sets of print and assemble trees and terrain to cover yards of gaming area. Perfect for Fantasy, Modern, SF games and everything in between.



www.penguinlabs.com/

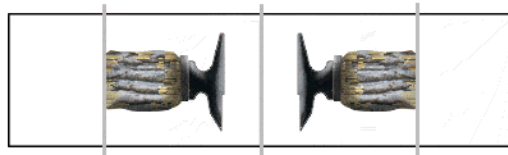
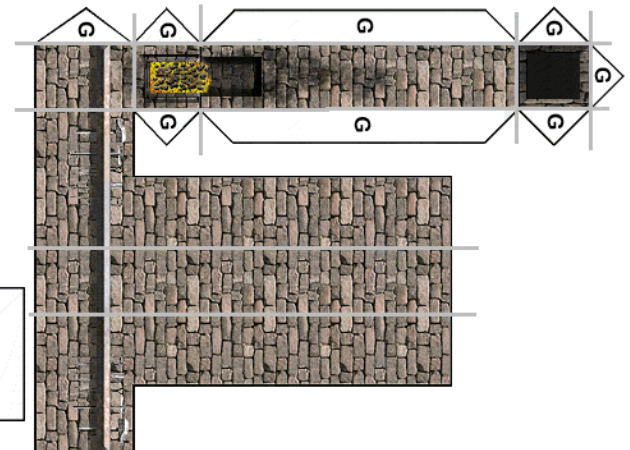
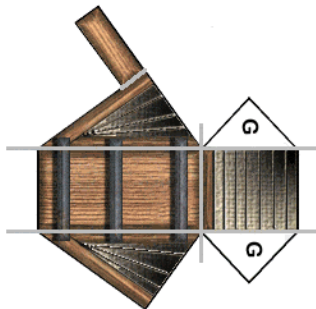


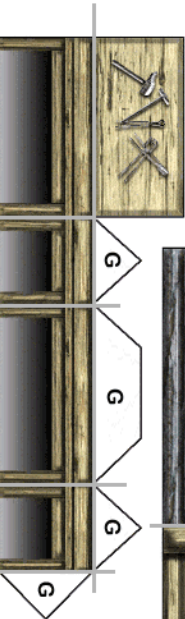
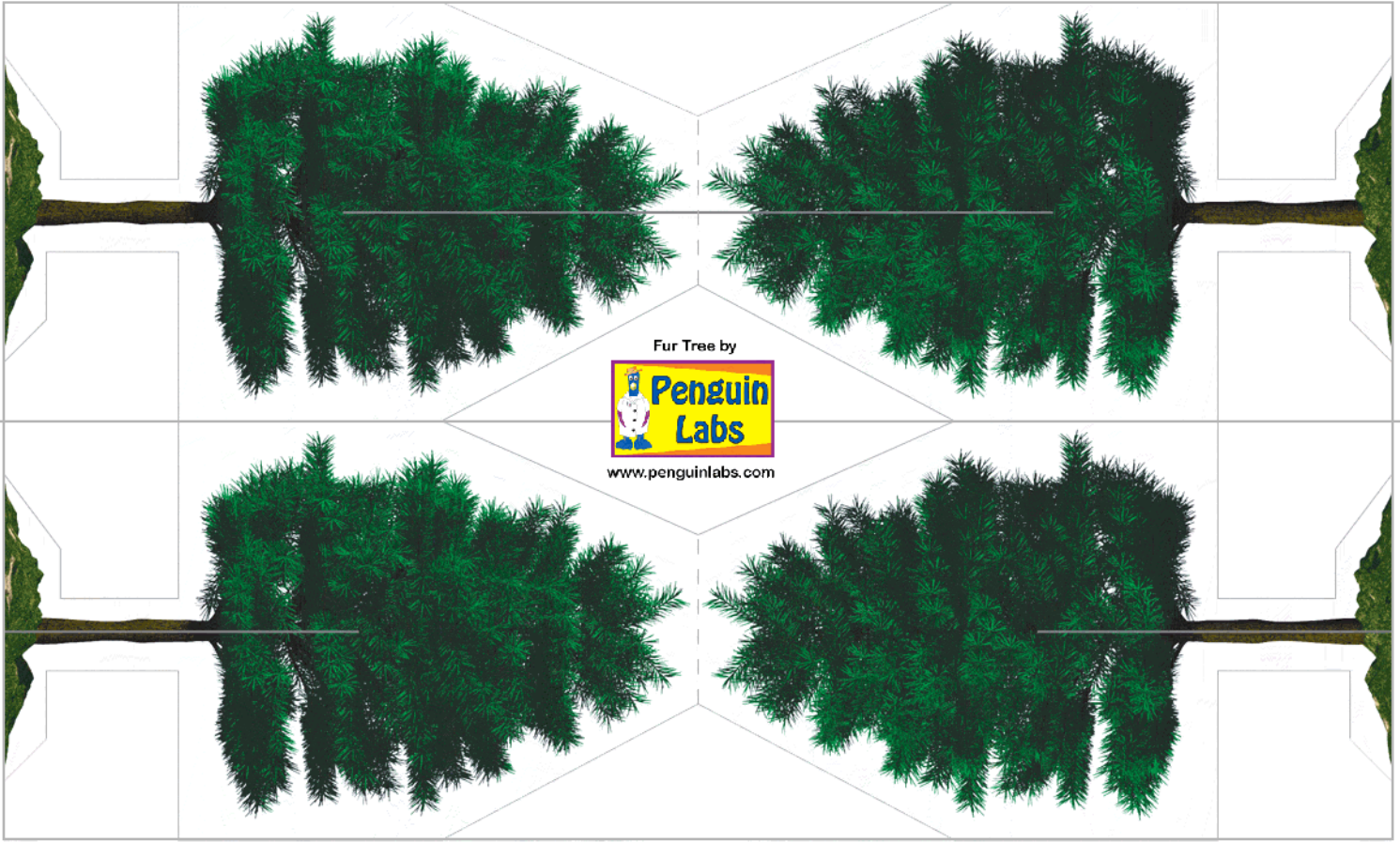
DIRT CHEEP™ STRONGHOLDS

from MicroTactix Games
www.microtactix.com

Design & Art © 2003 Gary M. Williams

THE BLACKSMITH



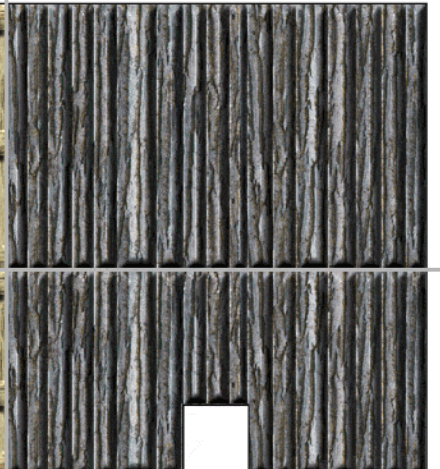
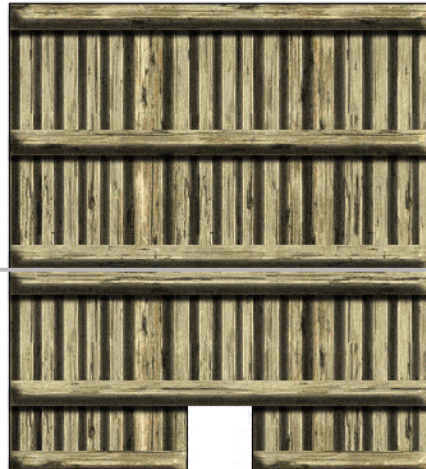


DIRT CHEEP™ STRONGHOLDS

from MicroTactix Games
www.microtactix.com

Design & Art © 2003 Gary M. Williams

THE BLACKSMITH



| | | | |
|--------------|--|--|---------------------------------|
| Master Smith | | | Artwork © 2003 Gary M. Williams |
| Forge Boy | | | Artwork © 2003 Gary M. Williams |