

# HEROIC DUNGEONS



www.microtactix.com

## INTRODUCTION

**HEROIC DUNGEONS** is a reissue of MicroTactix Games best selling game aid **DIRT CHEEP DUNGEONS** rescaled and reformatted so that it is compatible with plastic figures mounted on 1 1/2" bases. With the flat floor tiles and the selection of walls included in this package a dungeon complex of any size desired and be constructed for hours of gaming enjoyment.

## DISCLAIMER

We have made every effort to make sure that all parts fit together properly, but sometimes tolerances are tight and mistakes do happen. Test fit all pieces before applying glue. Some trimming may be required.

Before photocopying or printing these pages on cardstock, you may wish to assemble a test copy on plain paper to better understand the construction. A minimum of 65# cover stock is recommended for constructing the final models. Regular 20 lb. bond paper can be used, but these items were designed for a heavier stock for extra durability and coloring.

## Tools Required:

Scalpel or sharp-bladed hobby knife

Metal ruler or straight-edge

Cutting surface - a self-healing cutting mat is recommended, but a sheet of corrugated cardboard or even heavy poster board will work as well.

Glue - white glue, glue stick or wax stick. Double sided cellophane tape also works well. Rubber cement can be used, but will sometimes stain the cardstock or make it more difficult to color.

## A Note About Using White Glue

White glue contains a good deal of water. Too much glue will warp the card stock so that its almost unusable. Warping may also cause the parts to fit together incorrectly. If you use white glue, put a very thin coat on the glue tabs - the thinner the better. You can use a cotton swab or your finger to spread the glue thin. Remember to keep a damp paper towel handy to remove any excess glue.

## PLEASE NOTE:

Each item has been marked with a series of Grey Lines that are an indicator that these lines are Fold or Score lines. All Tabs which are to be glued to hold the structures together are marked with a capital letter (G). Unless otherwise noted, all Glue Tabs fold inwards to the structure.

## General Construction Notes:

Most of the pieces in this set will construct using one of two methods, the Box or the Stand-up. To build a piece using the Box Method, fold down the top of an object and fold in both sides. Glue all tabs to the inside. Some pieces will have a bottom which is folded up and glued in place. To build pieces using the Stand-up method, fold the piece in half and fold the two feet under, gluing one on top of the other. This will give you a triangular stand-up with a front and back.

Depending on temperature, humidity or your choice of paper stock, some pieces may not dry correctly in line. To minimize warping, use a light object, such as a CD case or cassette tape to place on top of the object while drying. This will also make for a better seal between the glue tabs and facing panels.

As the walls and other structures included in this package are only cardstock and fairly light, some extra weight in the bottoms of the pieces may be required. Before gluing the final bottom flap in place, glue several small metal washers (available at any hardware store) to the inside bottom. This should keep the pieces from sliding around on the gaming surface.

## Page 1: The Floor Tile

Print out as many tiles as desired for your gaming surface. The walls and other structures are to be placed on top of these tiles. Tiles can be joined together by taping on the back or laminating several tiles together for large playing surfaces.

## Page 2: Slanted Blocks

These blocks will construct in the box method as given above. The front surface is slanted and can be used as support columns for walls, end caps for walls and corridors or other areas as desired.

## Page 3: The Stairs and Altars

To construct the stairs, fold down the sides and back and fold each stair to follow the angles on the side walls. Glue all tabs to the inside. It is easier to construct the stairs one side at a time. See photograph for more details.

The two altars on this page will construct using the box method.

## Pages 4 thorough 8: Dungeon Walls

Each of the walls on these pages will construct the same way, using the box method. Included in this package are 2 1 1/2" blocks (Page 4), 1 3" wall with an extra 1 1/2" X 1 1/2" block with rings (Page 5), 1 4 1/2" wall (Page 6), 1 6" wall (Page 7) and 1 7 1/2" wall (Page 8). Use these walls in conjunction with the floor tile to create your dungeon complex in a variety of different patterns.

Note that on Page 7 a side wall must be attached to complete this piece. The wall will attach on the right side of the panel with the same size wall opposite it.

## Page 9: Tiles and Tables

The 3 large "Pit" tiles and 4 single tiles are cut out and placed on the floor tile for character encounters. The tables and boxes will assemble using the box method as given above.

## Page 10: Doors and Torches

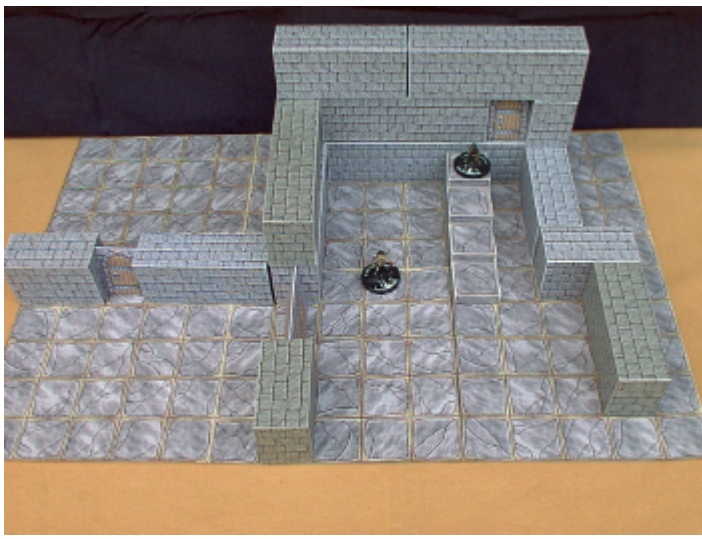
The doors will assemble using the stand-up method given above. Each door is 1 1/2" wide and will fit between wall sections. Torches are folded into a triangular shape like a stand-up and are glued to the walls in areas desired.

## Page 11: Standing Columns

After cutting out and scoring, the column base will assemble like the small alter above. To assemble the columns, cut out and score as indicated. Two methods can be used in construction. One method is to glue the triangular tabs to the underside of the top and bottom at the same time, working all the way around and glue the tab along side wall to close the piece. A less difficult method is to glue the column into a cylinder first, fold down the triangular tabs and glue the top and bottom down to them. Use a CD or cassette tape case to hold the top in place while drying. Once dry, attach the finished column to the base.

## Page 12: Terraces

These 4 pieces will add a little variety to your dungeon layout. They can be stacked against walls for raised surfaces or stack on top on of one another to form a terraced effect. See photograph for more uses. To assemble, fold down all four sides and glue the tabs to the inside. To form the "L" shaped piece, fold in the two long tabs to follow the angle and glue the tab to the inside. Tabs along the bottoms of three of the pieces have been included for the option of permanently attaching the pieces together. The 4 square piece can be used as a base for attaching the other pieces.



A typical dungeon layout using 6 taped together floor tiles and a walls of different lengths. Notice that there is a slight color variance in the walls. Some of them were printed out using only black ink on grey cardstock. White cardstock will work as well.



Another typical dungeon layout. Rooms of any size can be made by combining wall pieces.



A use of the stairs in conjunction with the terraced pieces. Note the columned wall support in the background. Upper doorways can be either single or double doors as desired.



Use the terraced pieces to create an irregular stairway for characters to use. To create taller walls, stack one wall section on top of another.



Printing and assembling multiple walls and columns will create huge dungeon complexes that can resemble dioramas or miniature movie sets. Size is limited only by your gaming space.

# HEROIC DUNGEONS

from MicroTactix Games

[www.microtactix.com](http://www.microtactix.com)

Design & Art © 2002 Gary M. Williams



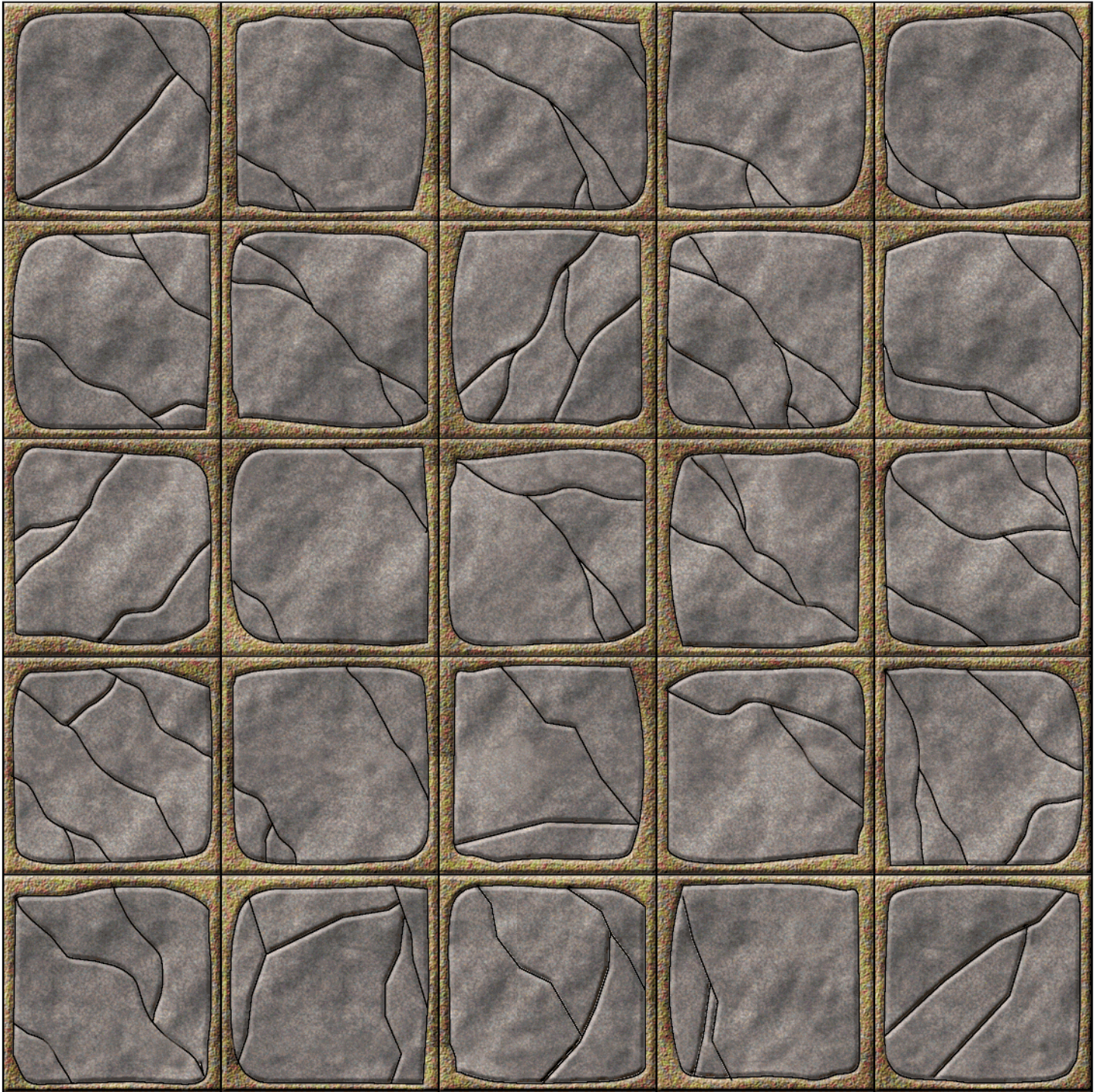


# HEROIC DUNGEONS

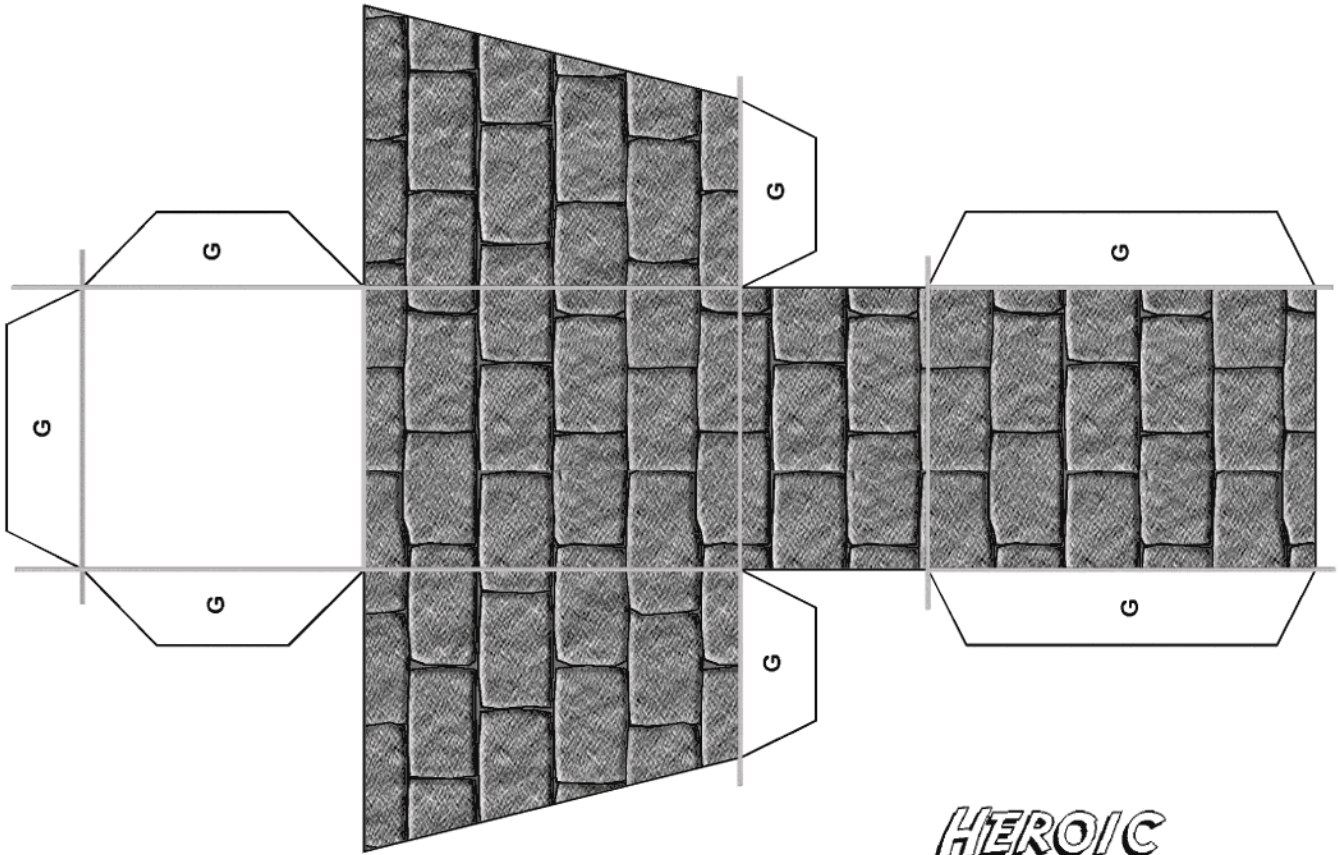
from MicroTactix Games

[www.microtactix.com](http://www.microtactix.com)

Art & Design © 2002 Gary M. Williams

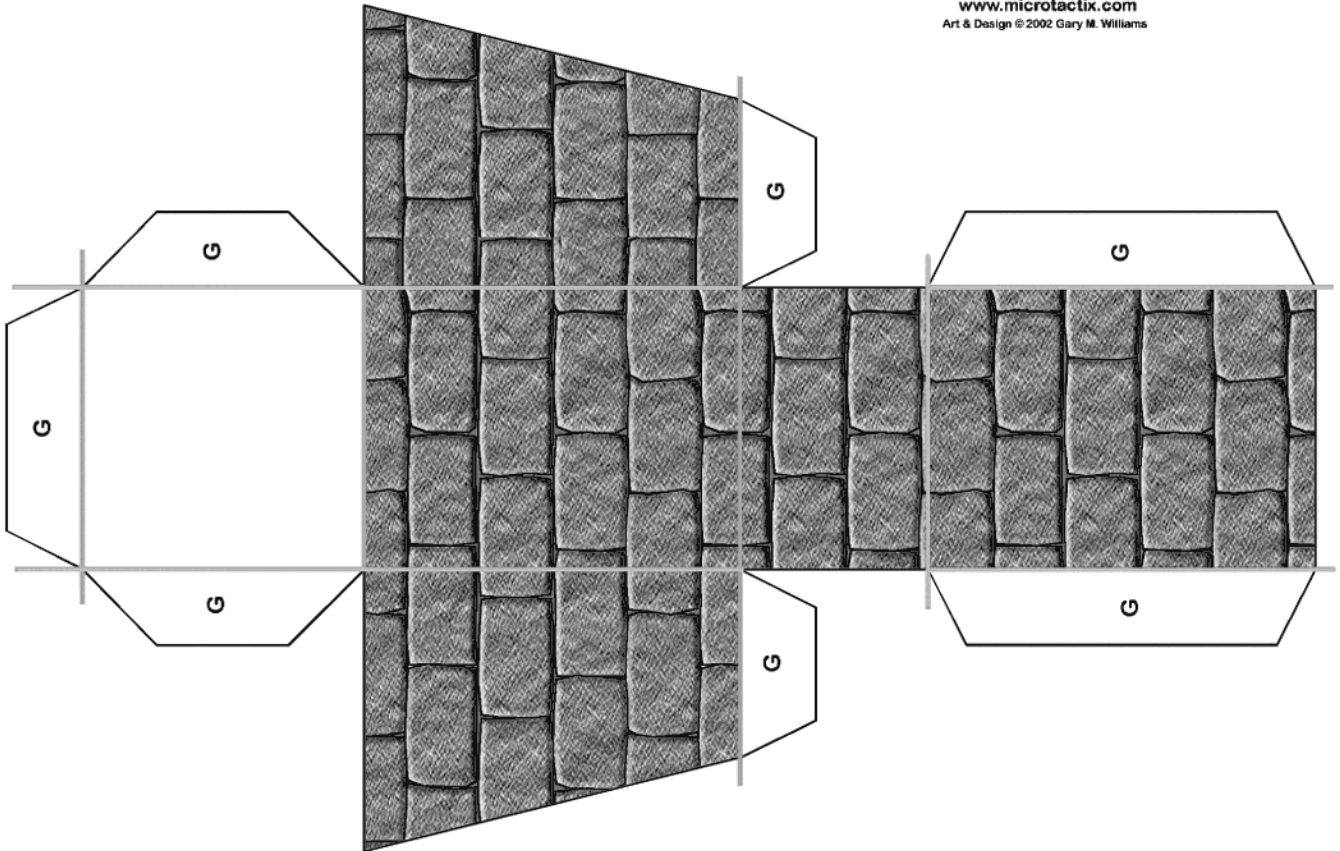




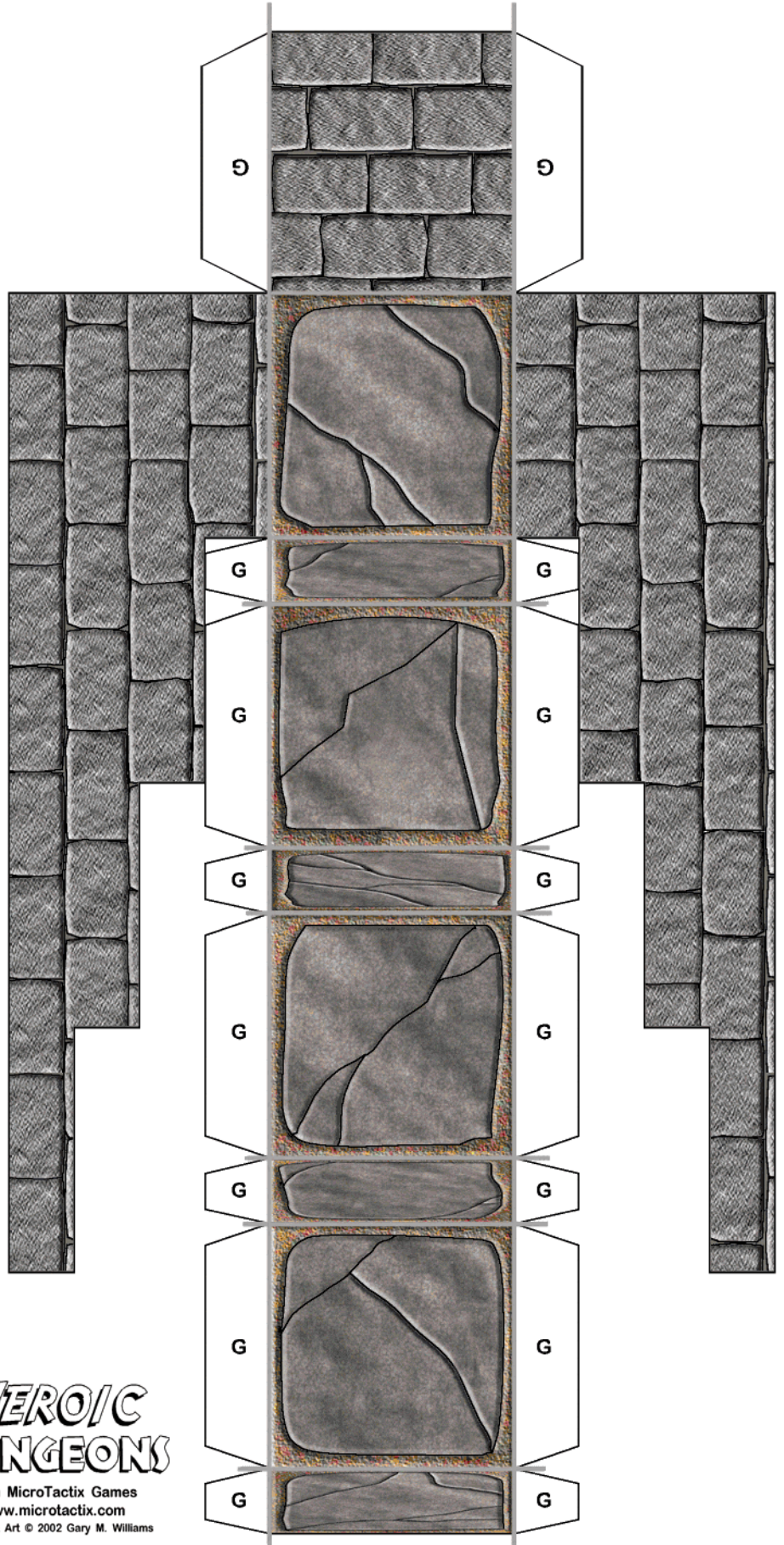
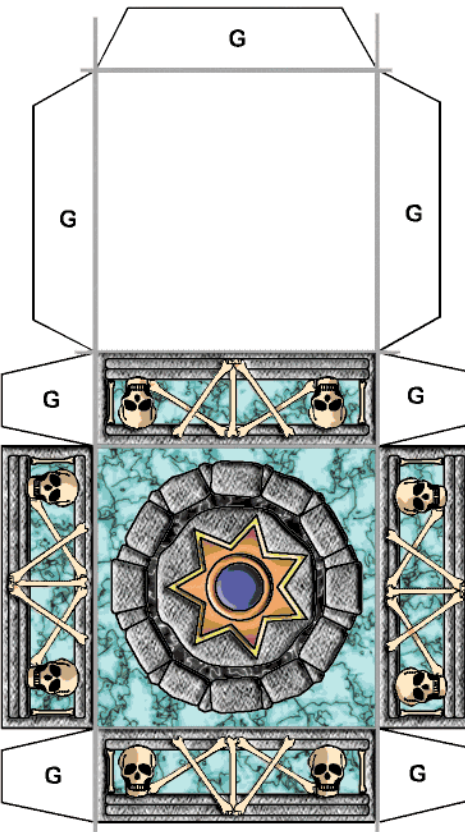
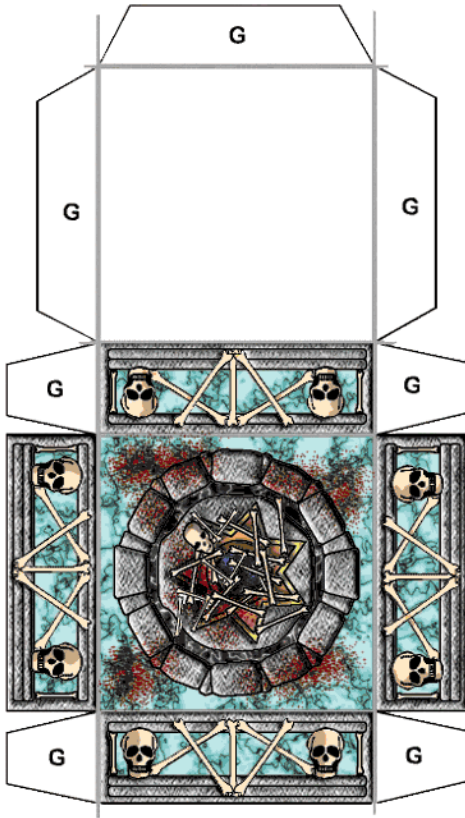


# HEROIC DUNGEONS

from MicroTactix Games  
[www.microtactix.com](http://www.microtactix.com)  
Art & Design © 2002 Gary M. Williams



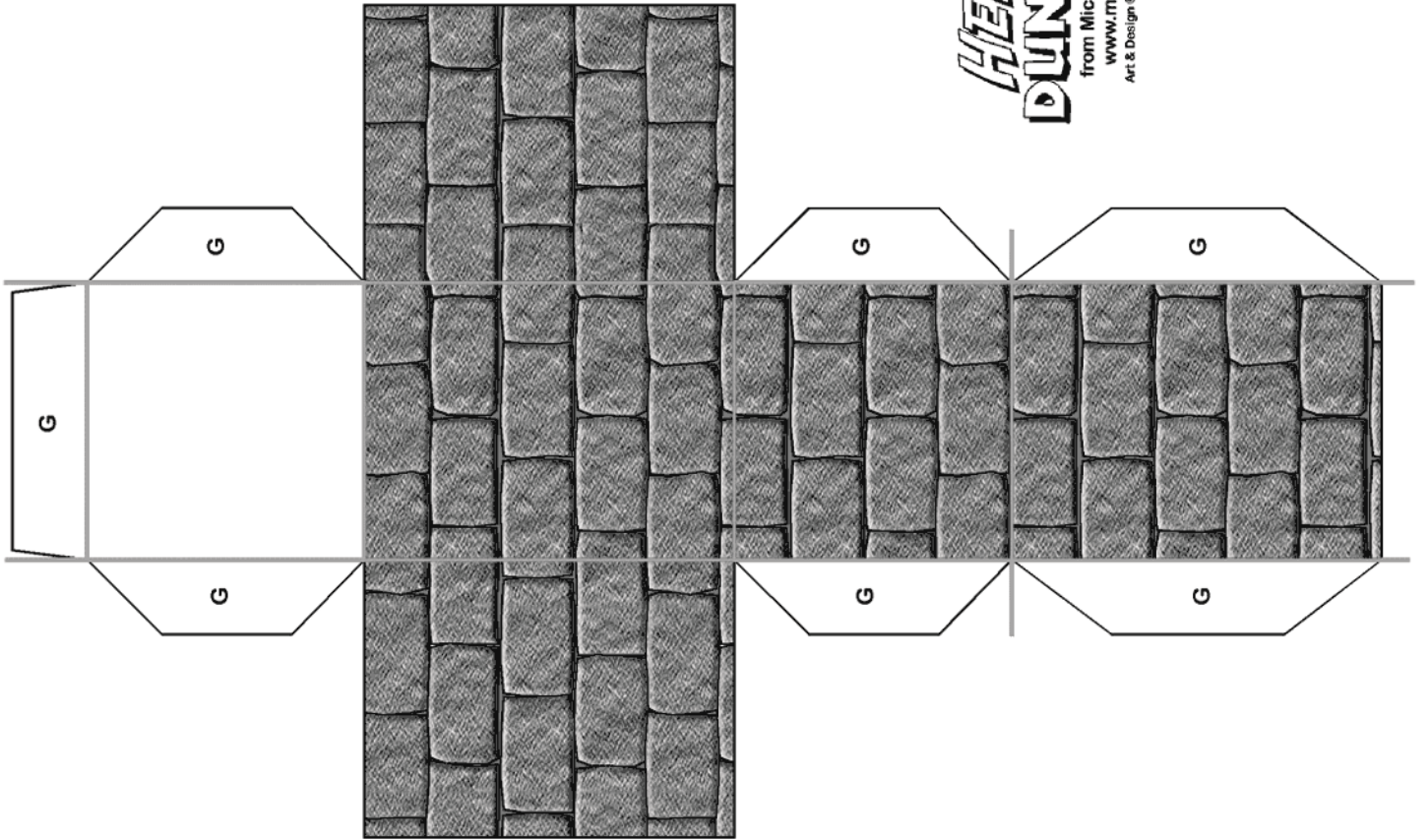
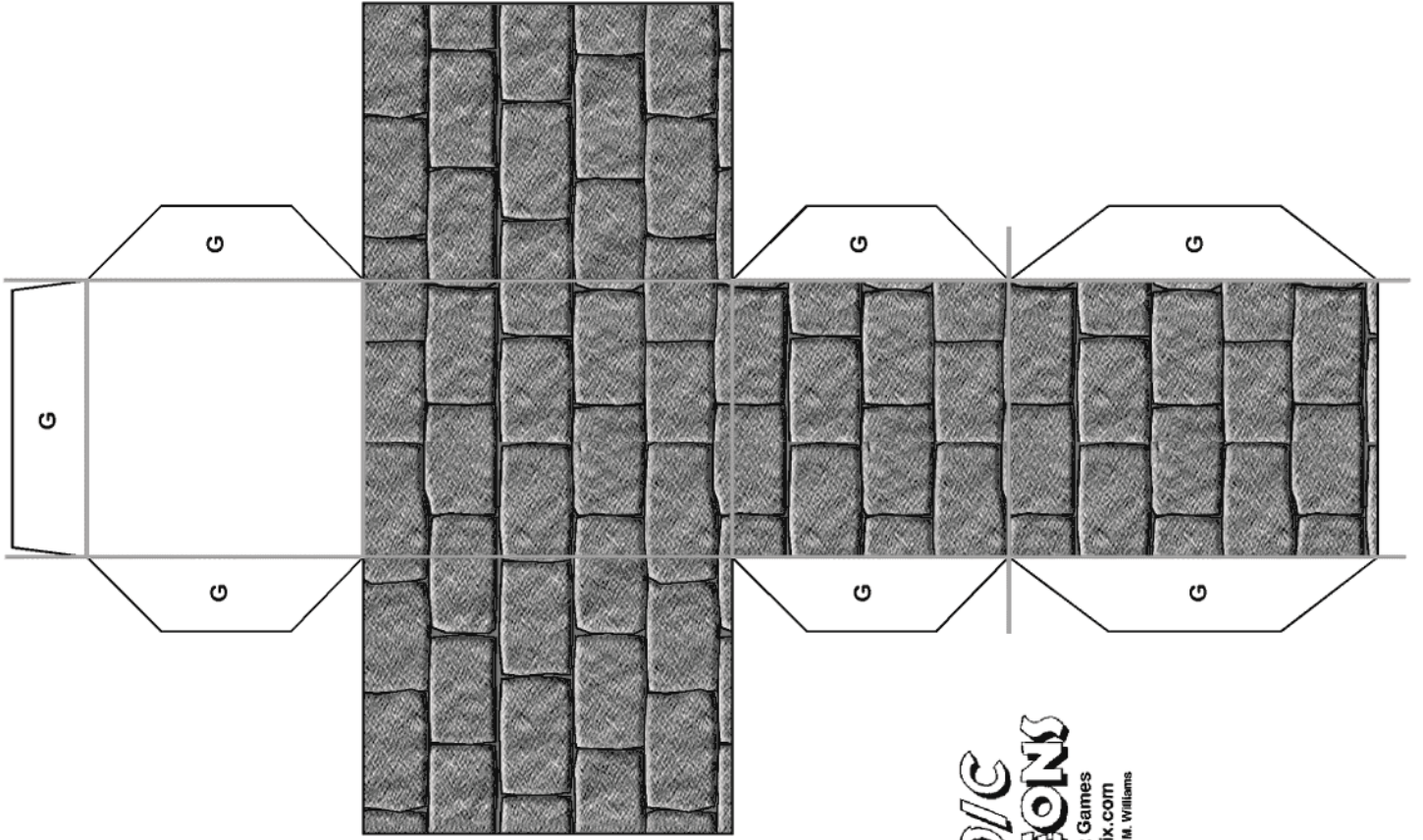




# HEROIC DUNGEONS

from MicroTactix Games  
[www.microtactix.com](http://www.microtactix.com)  
 Design & Art © 2002 Gary M. Williams



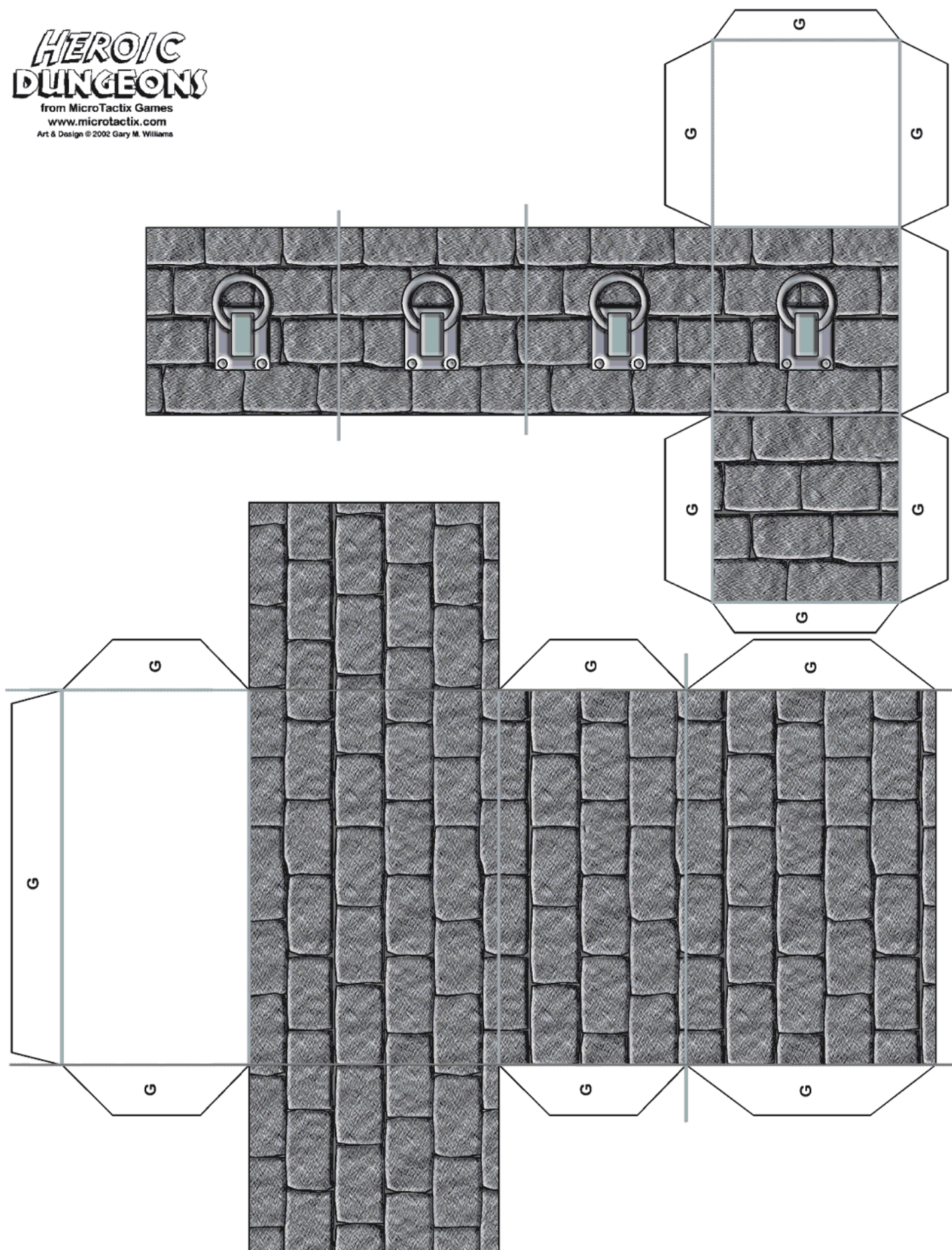


**HEROIC  
DUNGEONS**  
from MicroTactix Games  
[www.microtactix.com](http://www.microtactix.com)  
Art & Design © 2002 Gary M. Williams



# HEROIC DUNGEONS

from MicroTactix Games  
[www.microtactix.com](http://www.microtactix.com)  
Art & Design © 2002 Gary M. Williams



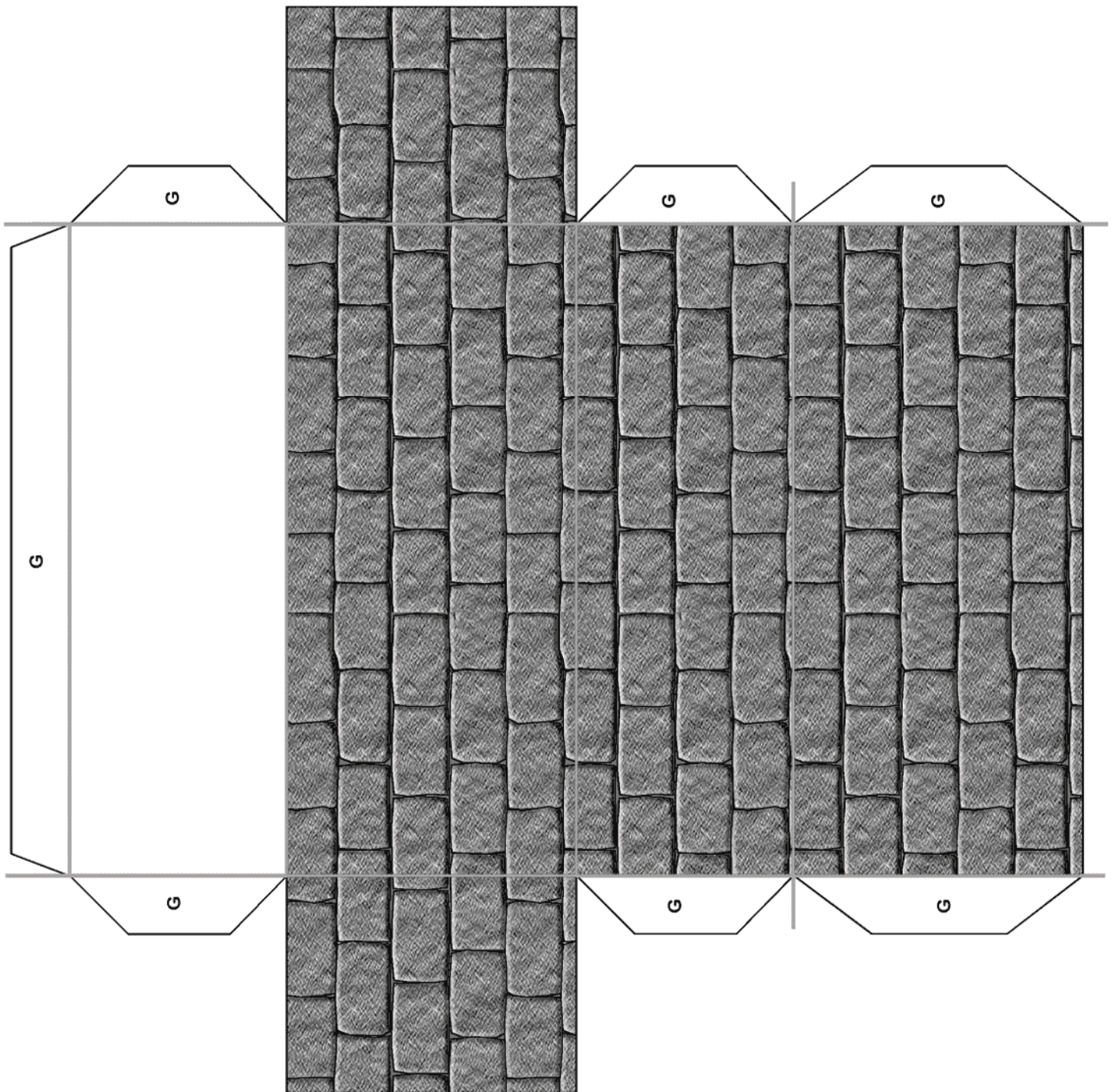


# HEROIC DUNGEONS

from MicroTactix Games

[www.microtactix.com](http://www.microtactix.com)

Art & Design © 2002 Gary M. Williams



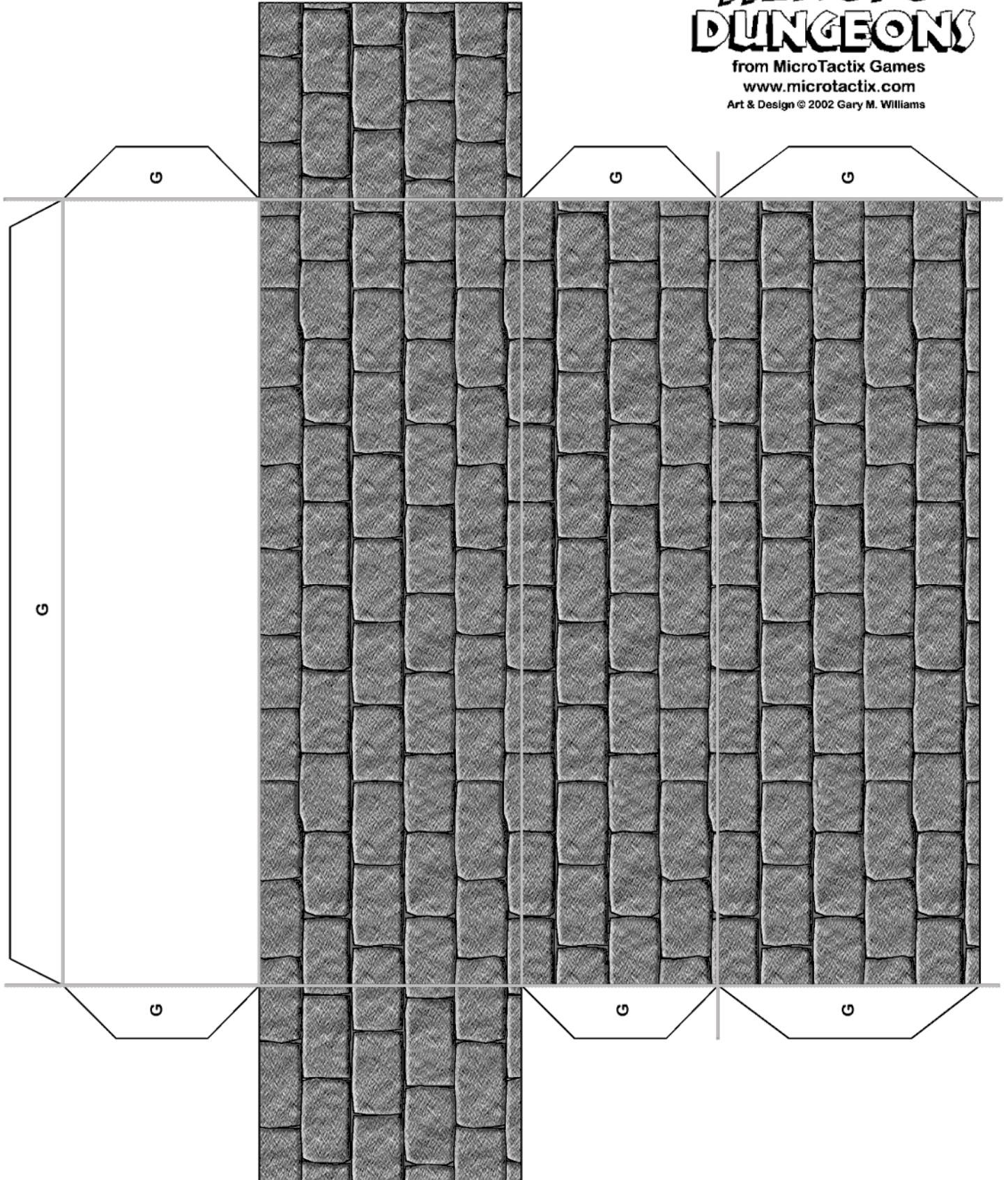


# HEROIC DUNGEONS

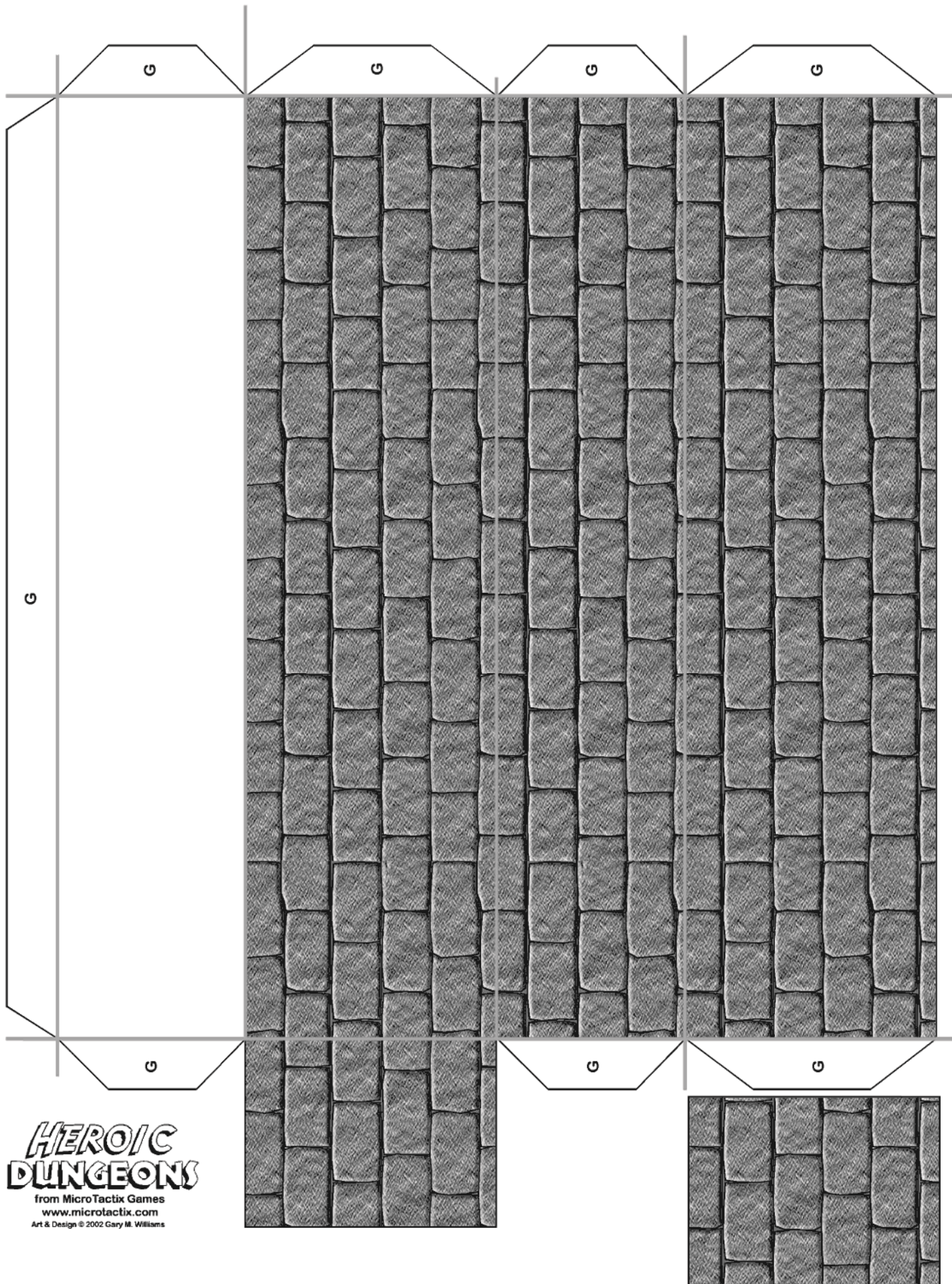
from MicroTactix Games

[www.microtactix.com](http://www.microtactix.com)

Art & Design © 2002 Gary M. Williams



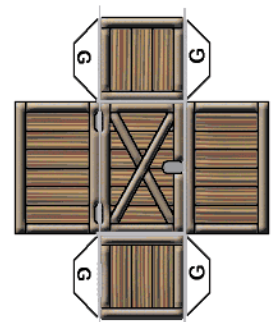
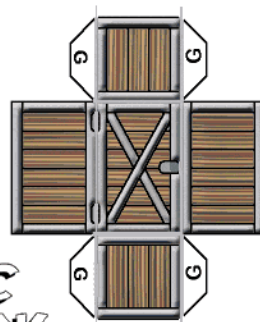
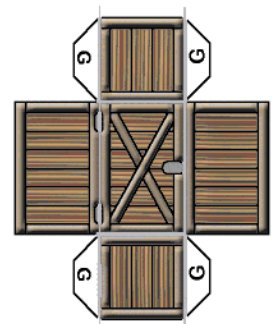
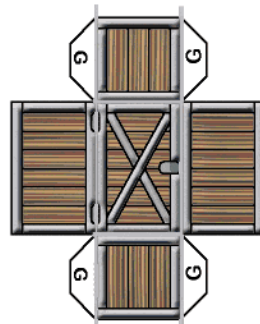
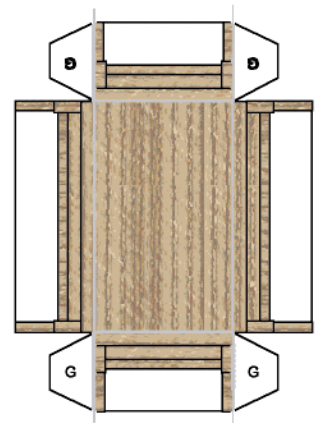
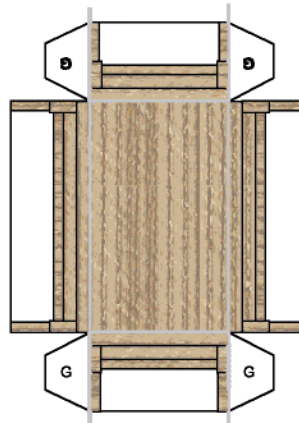
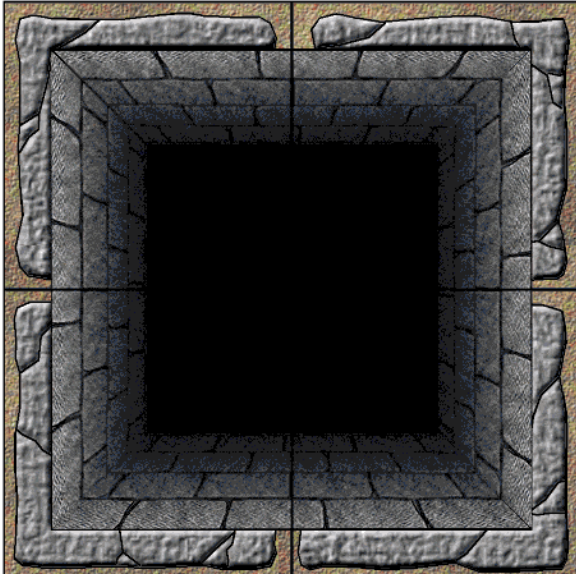
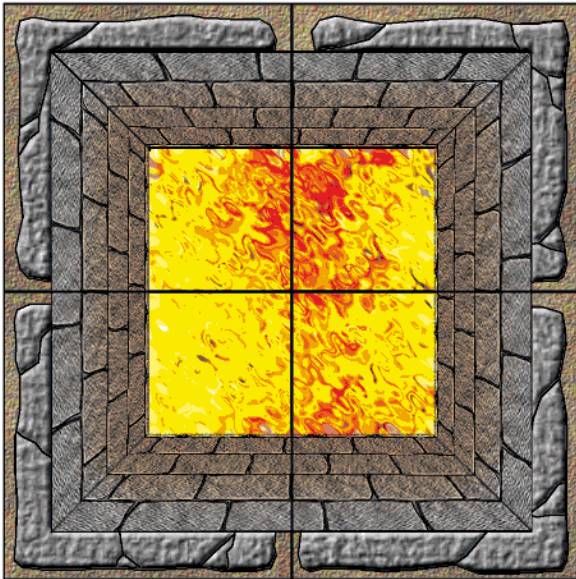
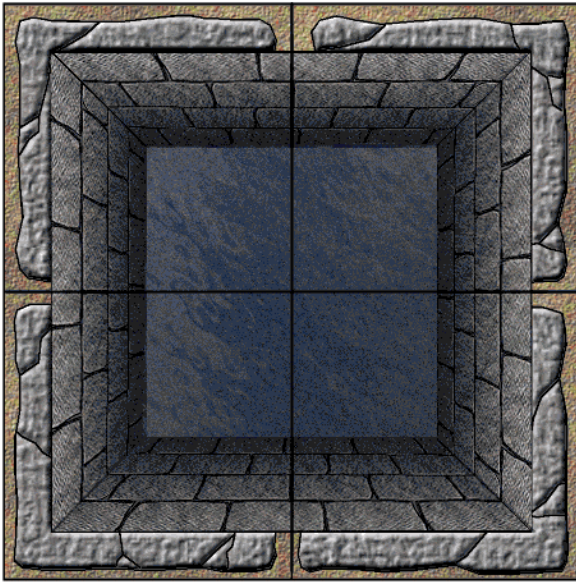




**HEROIC  
DUNGEONS**

from MicroTactix Games  
[www.microtactix.com](http://www.microtactix.com)  
Art & Design © 2002 Gary M. Williams

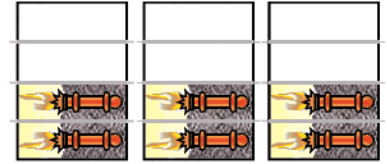
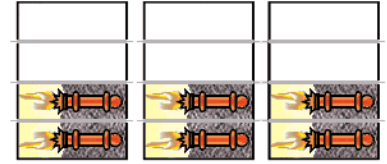
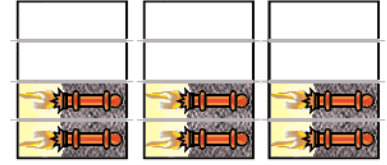
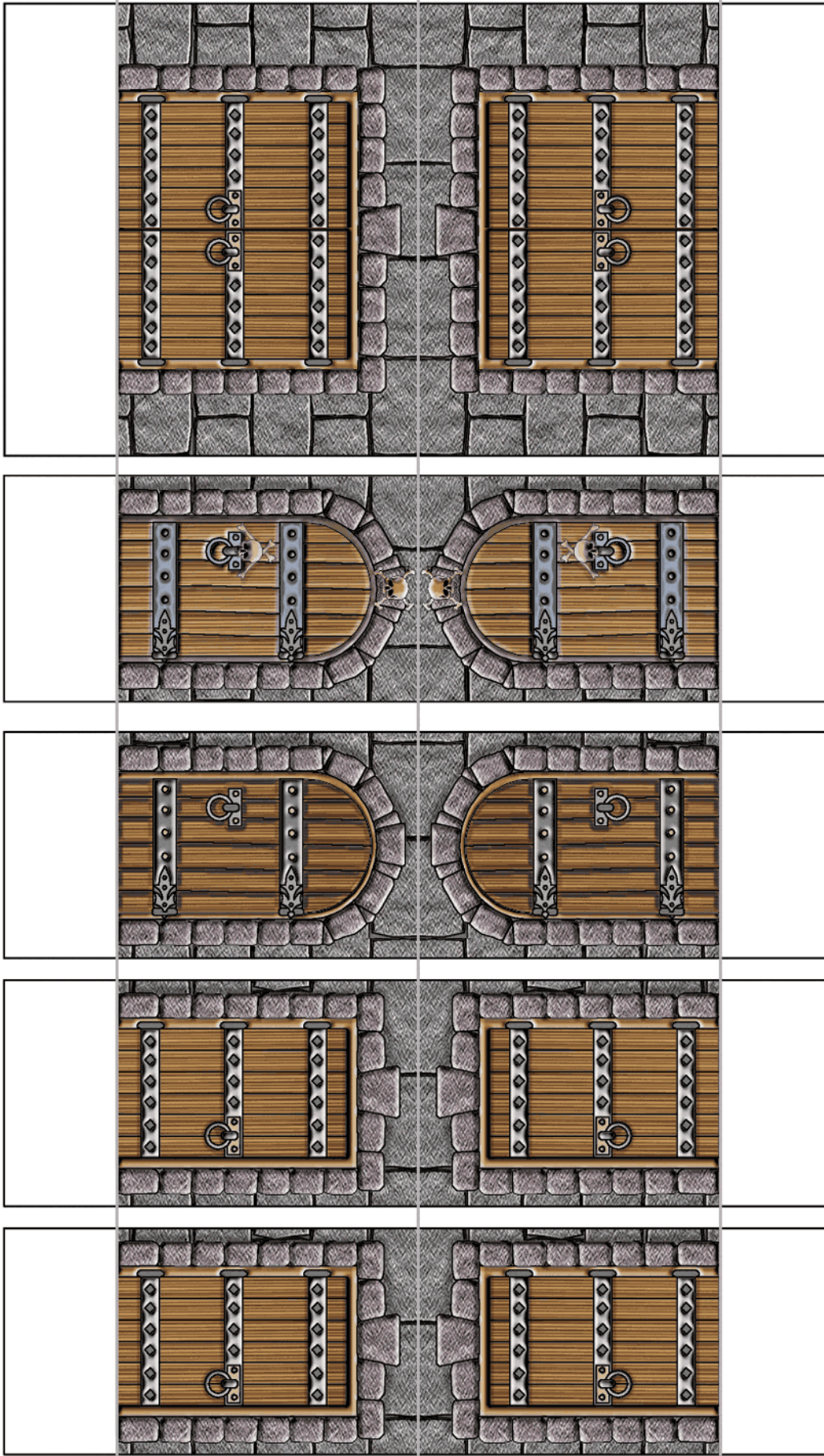




# HEROIC DUNGEONS

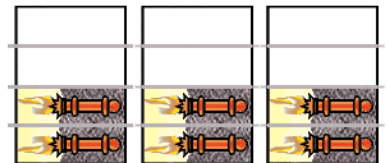
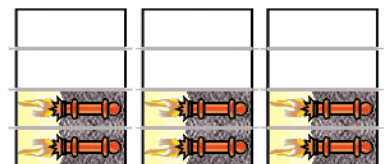
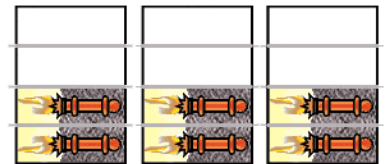
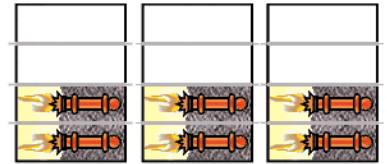
from MicroTactix Games  
[www.microtactix.com](http://www.microtactix.com)  
Art & Design © 2002 Gary M. Williams



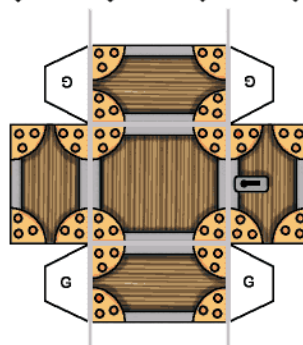
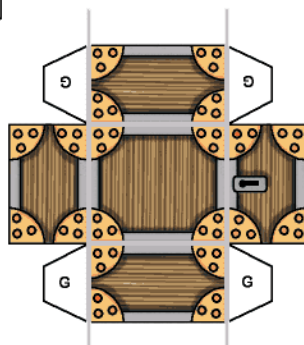
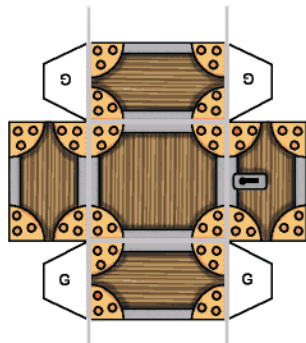
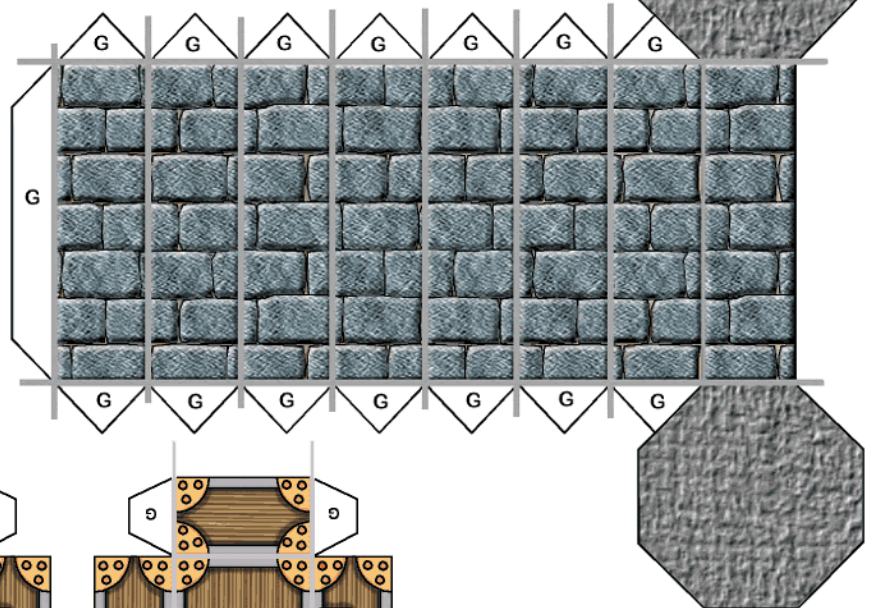
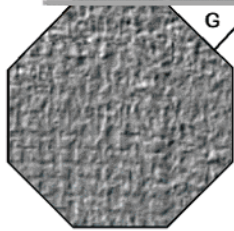
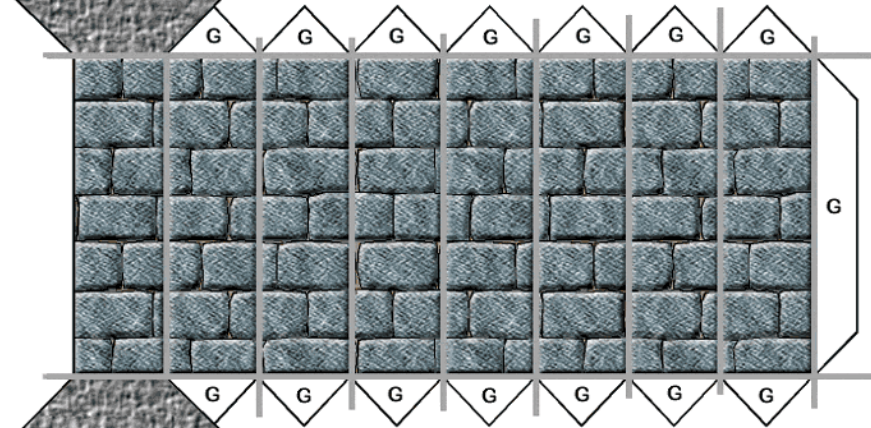
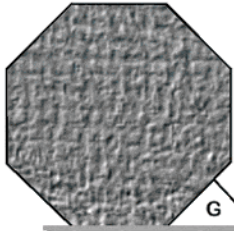
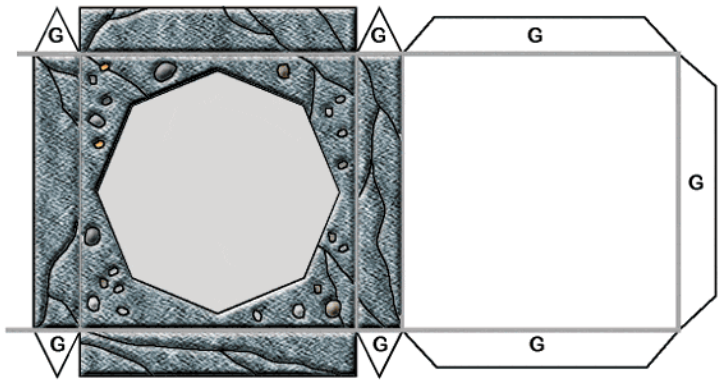
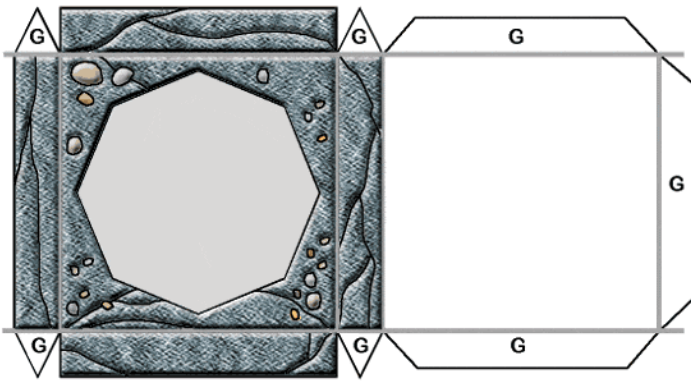


# HEROIC DUNGEONS

from MicroTactix Games  
[www.microtactix.com](http://www.microtactix.com)  
Art & Design © 2002 Gary M. Williams



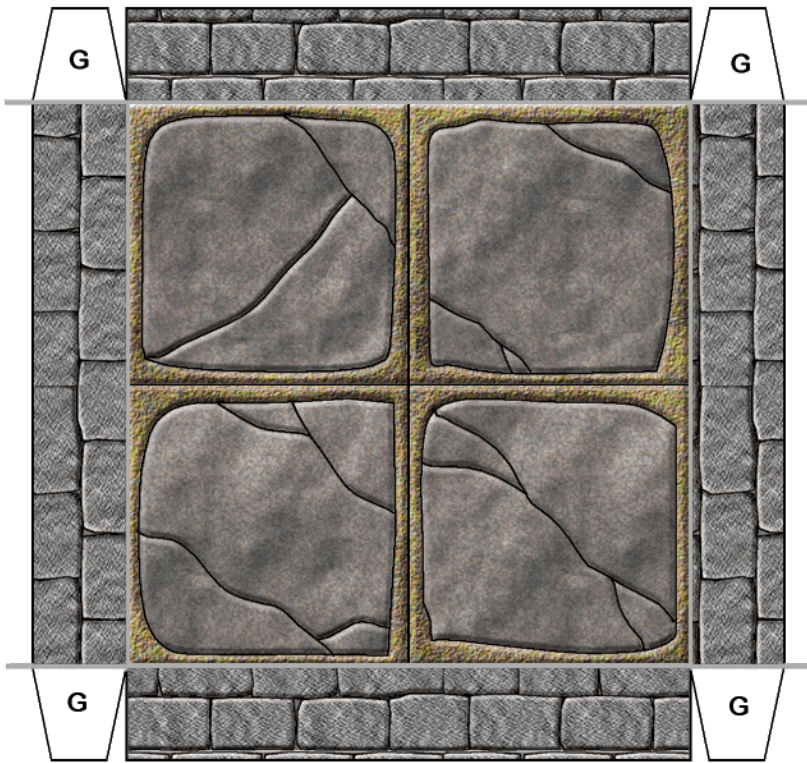




# HEROIC DUNGEONS

from MicroTactix Games  
[www.microtactix.com](http://www.microtactix.com)  
 Design & Art © 2002 Gary M. Williams





# HEROIC DUNGEONS

from MicroTactix Games  
[www.microtactix.com](http://www.microtactix.com)  
 Design & Art © 2002 Gary M. Williams

