

INDUSTRIAL STATION WRECKAGE



www.microtactix.com



The finished building on it's base and placement of the included props.

GENERAL CONSTRUCTION NOTES

Tools Required:

Scalpel or sharp-bladed hobby knife

Metal ruler or straight-edge

Cutting surface - a self-healing cutting mat is recommended, but a sheet of corrugated cardboard or even heavy poster board will work as well.

Glue - white glue, glue stick or wax stick. Double sided cellophane tape also works well. Rubber cement can be used, but will sometimes stain the cardstock or discolor colored inks and cause them to run.

A Note About Using White Glue

White glue contains mostly water. Too much glue may cause warping. Warping may cause the parts not to fit together correctly. If you use white glue, apply a very thin coat on the glue tabs - the thinner the better. You can use a cotton swab or your finger to spread the glue thin. Remember to keep a damp paper towel handy to remove any excess glue from your fingers before assembly.

IMPORTANT! PLEASE NOTE:

Many of these pieces in this set have been marked with a series of grey lines to indicate where to fold. In most cases the grey line will appear at the edges of the pieces and not on the themselves. It is strongly recommended that all score lines be made *before the piece is cut from the page*. In most every case the grey line will appear at the top and bottom of a line that needs to be scored. Line up your ruler

along these grey lines so it is even and score across the body of the section you are intending to construct.

The contents of this package have been specifically designed to be used the Budget Battlefield Game or any tabletop wargaming system that uses 25-30mm miniatures. As most wargaming systems use a measuring system and not a grid system for movement, none of the base tiles have been marked out with a 1" grid. If you wish to use these pieces for systems that use a 1" grid system for movement, it is recommended that a grid can be drawn out on the tiles before assembling by using a ball point pen or permanent felt tipped pen *before* final assembly.

It should also be pointed out that while these pieces were designed to be printed on 110# cardstock (available at your local office supply store), lighter cardstock will work just as well. It is recommended, however, that the bases be glued to a heavier cardstock to help support the buildings and add durability to the finished models. Bases can be glued to heavy chipboard, foamcore, illustration board or any other type of heavy material as desired.

DISCLAIMER

The designer has made every effort to make sure that all parts fit together properly, but sometimes tolerances are tight and mistakes do happen. Test fit all pieces before applying glue. Some trimming may be required.

CONSTRUCTING THE STAND-UPS

Cut out each stand-up so that each piece has a front image, a back image and a base panel on either end. Fold the stand-up in the middle and fold the two base panels in. Glue one base panel on top of the other to form a triangle shape.

CONSTRUCTING THE BUILDING

The building in this set will consist of a base tile and two wall sections. Other pieces can be added on or left out as desired. Both of the wall sections will assemble the same way. Cut out each wall section from the printed page along the black outside line. This will leave the printed image of the walls in a block. Note that the glue tabs along the bottoms of the outside sections will be outside this block. Score along the grey horizontal line and fold the piece in

half to create a front and back side. Glue the two sides together. Placing the piece on a flat surface, such as a tabletop, and placing several books on top while drying will insure that the panels dry flat. A piece of wax paper will keep any glue that seeps out from between the two panels from drying on the tabletop or book weights. Depending on the weather (wet or humid conditions can effect drying time), several hours or overnight may be required to insure that the pieces are completely dry. When dry, cut out all of the white areas around the wall sections. The outline need not be followed exactly and more detail in the cut-out will enhance the effect. Be sure to cut out the doorway section at this time.

After attaching the base to a heavier cardstock (if desired) attach the wall sections as follows. Fold the front wall section at the fold line between the two columns and fold up the tabs along the bottom edges. *Note: Be sure to cut between the two glue tabs on the front wall sections.*

Apply glue to the bottom of the lower tabs and set the wall in place. The front door opening will line up with the broken walkway at the front of the base and the side wall will fold around the corner. Make sure that the inside wall is flush against the 1" square floor texture on the base. When dry, the second wall can be added. Again, make sure that the two glue tabs at the bottom of the second wall section are cut apart. The glue tab to the right of the outside will glue to the edge of the front wall that is now attached to the base. The



The Ruins from the front. Note the vent pipe placement.

second panel of this wall (the one with the window in it) will fold out and attach to the base as given above. See the photograph of the finished model as an example.

On the second page of this set are several pieces that can be build and placed on the model as desired. To construct the air conditioning unit, score as indicated and cut out. Fold in the two side panels and fold the glue tabs at the top down. Glue these tabs to the inside of the top section. When dry, fold in the remaining glue tabs. The unit can be placed as shown in the photograph. To assemble the vent pipe, fold into a box shape and glue the tab to the inside of the front wall. *Note: As shown in the photograph, the inside of the vent pipe should be colored black with a water based marker or other technique as you desire.* When dry, fold up the two tabs along the bottom edge, apply glue to these tabs and to the back panel section, about halfway up, and attach to the top of the air conditioning unit as well as the wall.

To construct the control panels, score and cut out as indicated. Fold down the top instrument panel and fold down the two tabs at the edges. Apply glue to these tabs and glue them to the side walls. Fold in the two tabs at the back edges and glue to the inside walls. The instrument panels can be placed as desired.

The concrete slab, located in the upper right corner of Page Three, is scored and cut out as indicated. Fold down all side panels and fold in all glue tabs. Glue the tabs to the inside of the slab, matching any angles on the piece as you go. When dry, apply glue to the remaining tabs and fold down the back panel in place. When finished, this piece can be placed as desired in or around the building.

The Energy Column, on Page Four, is a simple prop that can be placed as desired in or around the building. It will assemble like the wall sections given above. When dry, cut out by following the black area around the piece or as close as desired. Make a cut at the base of the Energy Column along the grey line. The second part of the base will assemble as a two sided piece as well. When dry, cut out and make a cut along the grey line. For final assembly, slide the base into the bottom of the Energy Column until the piece stands on it's own. The cement hex base is cut out and the Column can be placed on top.

To assemble the Cargo Pod, score and cut out as indicated. Note that there are two grey lines along the panel that the hex shaped ends are attached to. These lines will need to be scored. Also note that the glue tabs at the bottoms of the hex shaped ends will need to be cut away from the end panels (not the rectangular panels) in order for the piece to fold correctly. For final assembly, fold up the two end panels

and fold in all glue tabs. Starting with either the left or right side, glue the tabs to the inside of an end panel, matching the angles as you go. After finishing one side, repeat the process for the other. To close the piece, apply glue to the rectangular tab at the end and press down on the opposing panel. This piece can be placed as desired on the model and used as cover for troops or as an obstacle. Multiple copies of the Pod can be stacked in a pyramid shape if desired.

TO ASSEMBLE THE STAND-UPS

Cut out each stand-up so that each piece has a front image, a back image and a base panel on either end. Fold the stand-up in the middle and fold the two base panels in. Glue one base panel on top of the other to form a triangle shape.

Design & Art of all pieces in this package

© 2004 by Gary M. Williams

Budget Battlefield™

© 2004 MicroTactix Games

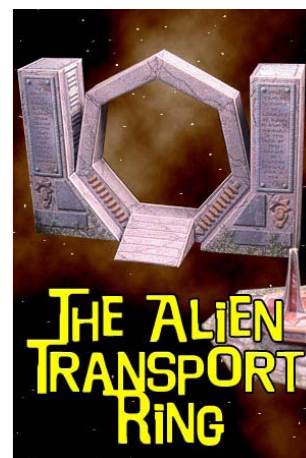
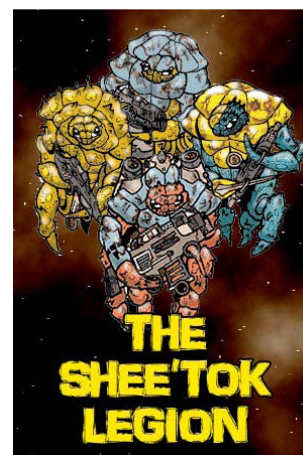
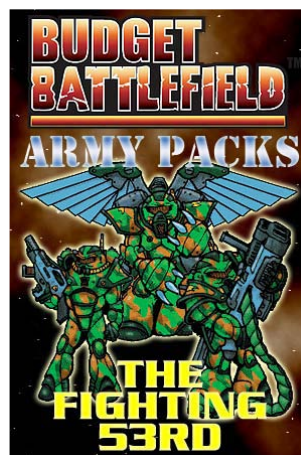


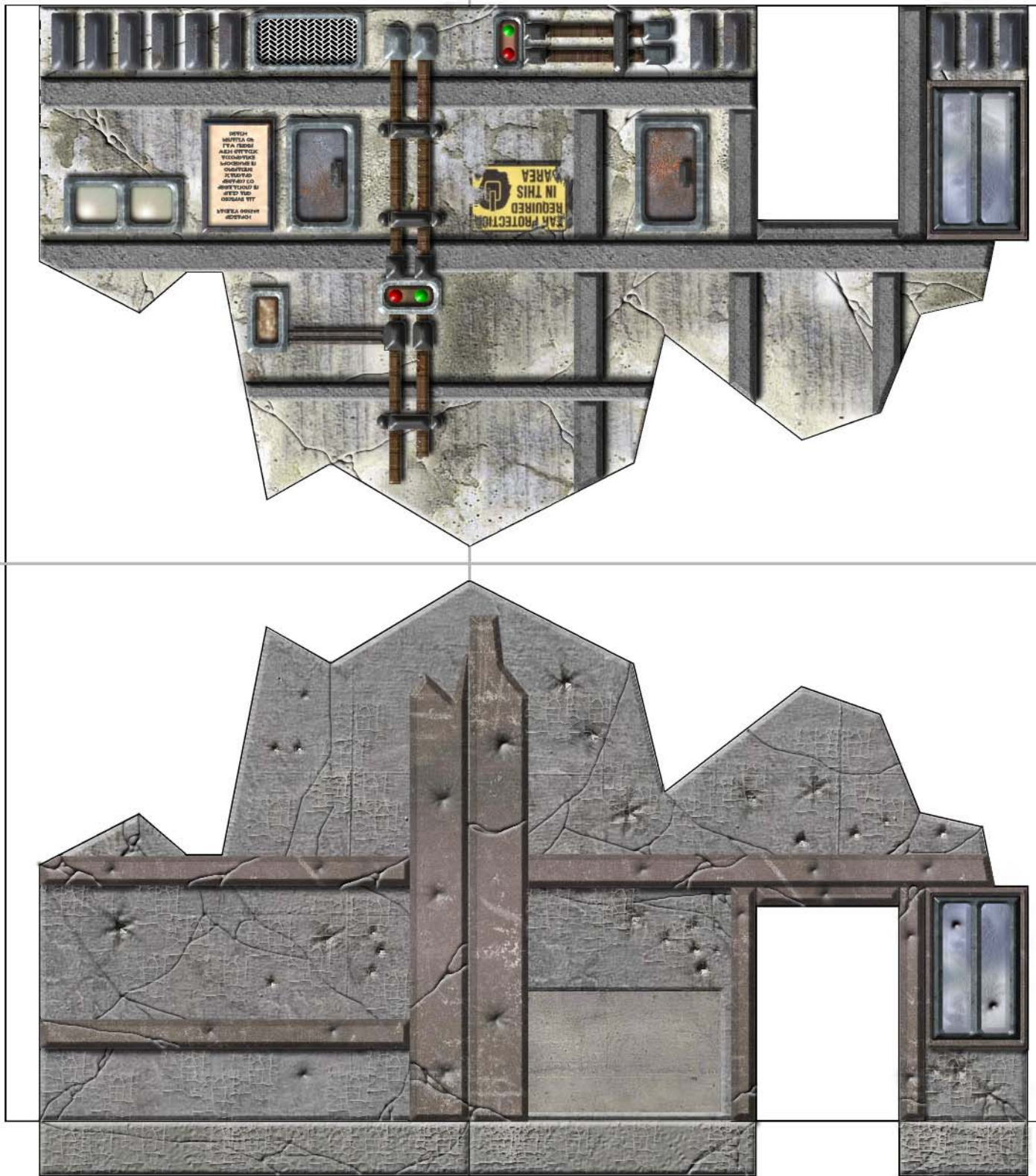
Not happy with just a taste of the M.E.F. 183? Download the entire 9 figure set from MicroTactix Games and RPGnow and see what they can really do! 9 different unit types, 2 Land Cannon stand-ups and information cards for each unit!

Budget Battlefield™ basic set required for play, Available at RPGnow.

More Army Packs Available
at our web site.

www.microtactix.com

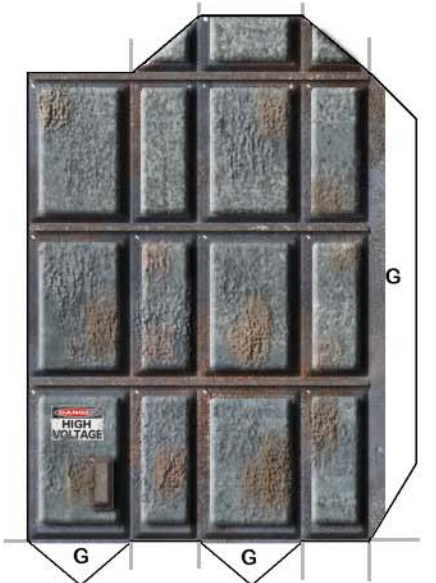
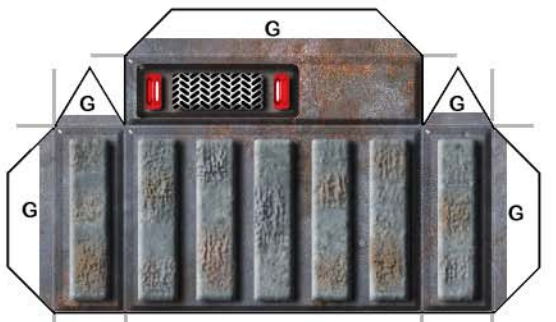
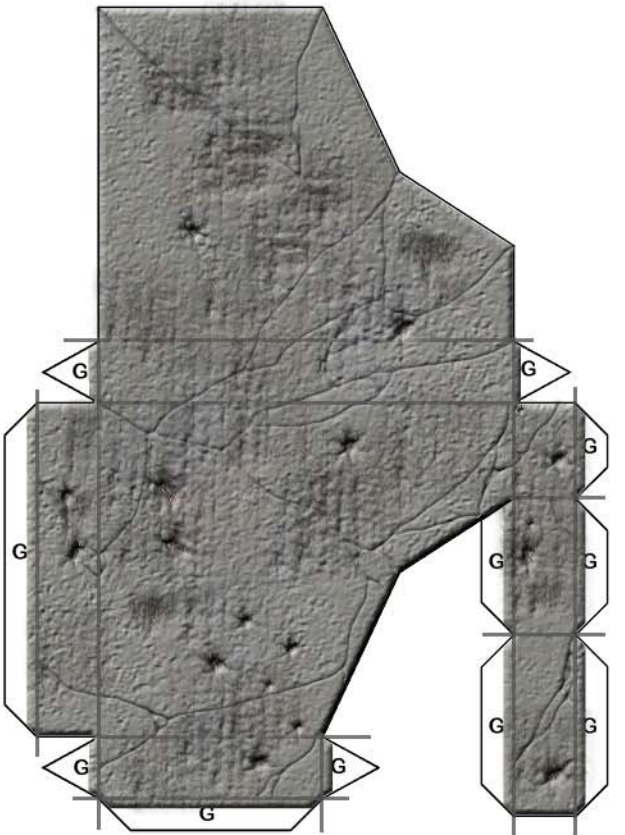




**BUDGET
BATTLEFIELD™**

Copyright © 2004
MicroTactix Games
www.microtactix.com

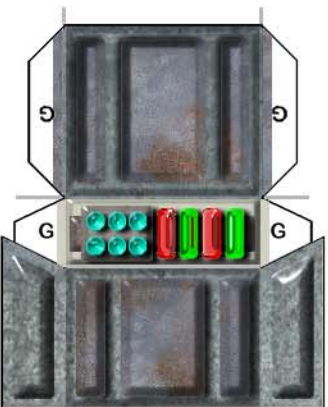
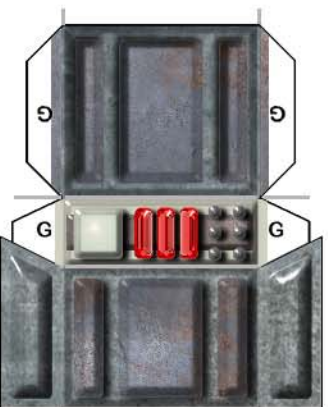
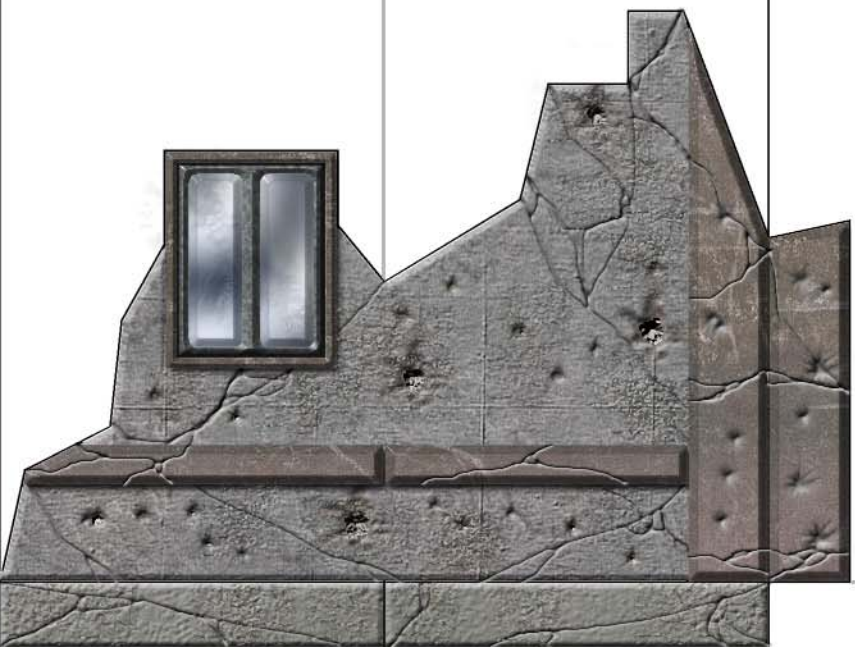
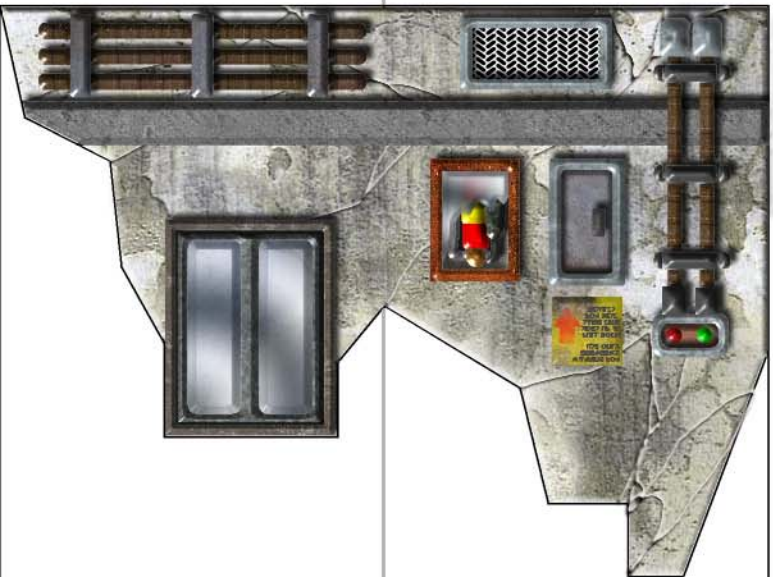
Design & Art
© 2004 Gary M. Williams

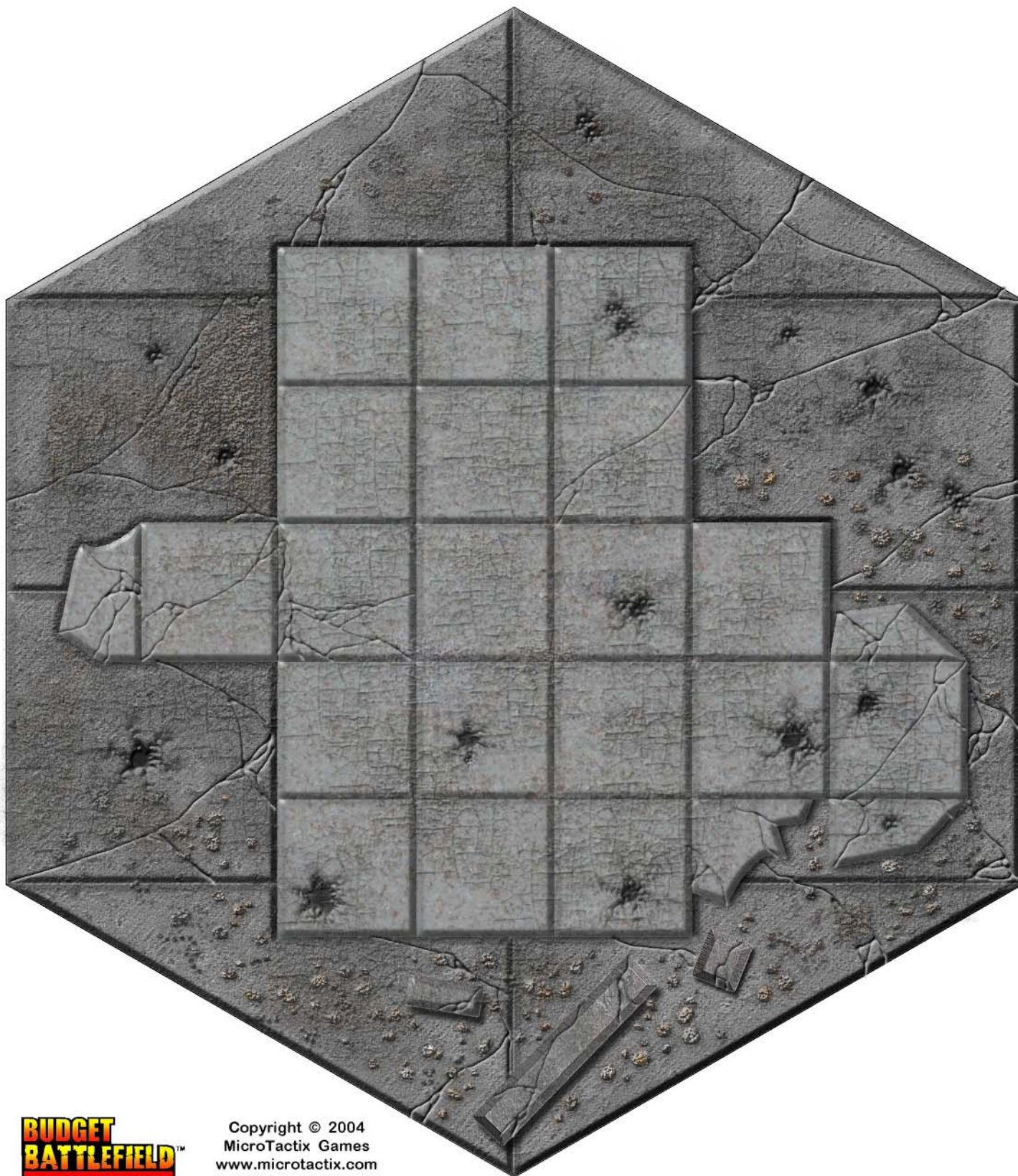


**BUDGET
BATTLEFIELD™**

Copyright © 2004
MicroTactix Games
www.microtactix.com

Design & Art
© 2004 Gary M. Williams

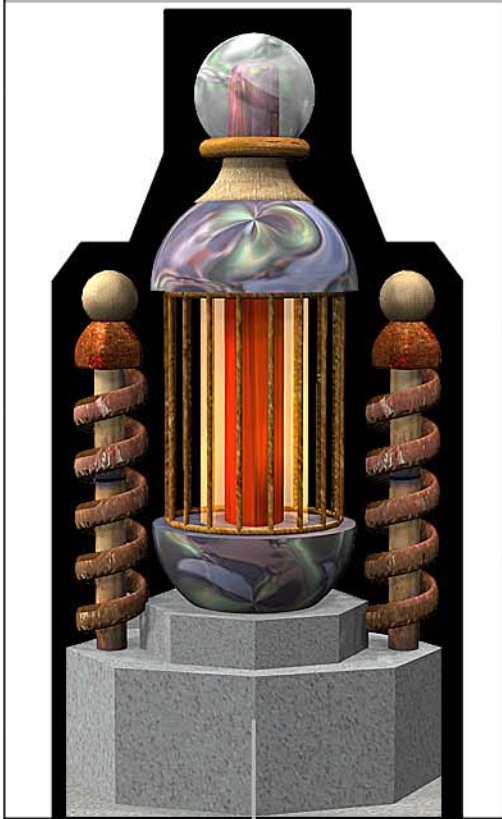
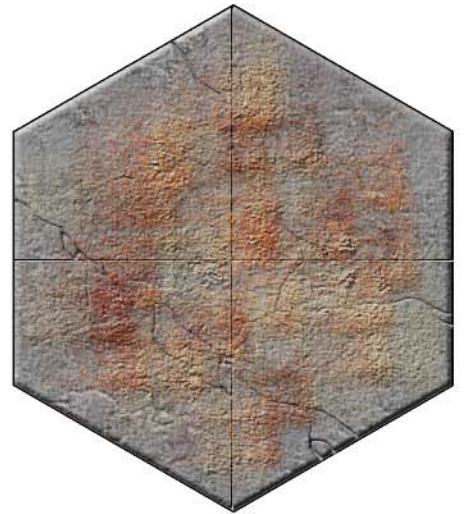
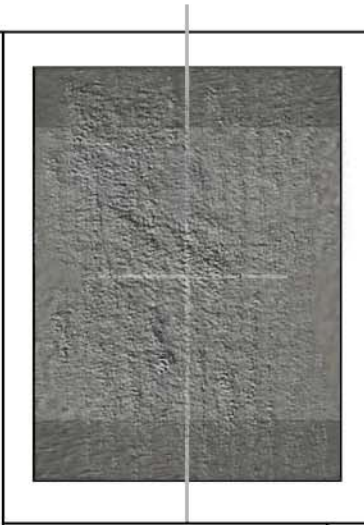




**BUDGET
BATTLEFIELD™**

Copyright © 2004
MicroTactix Games
www.microtactix.com

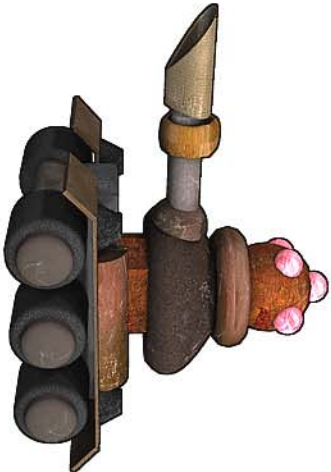
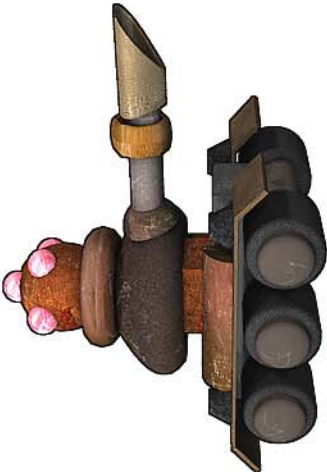
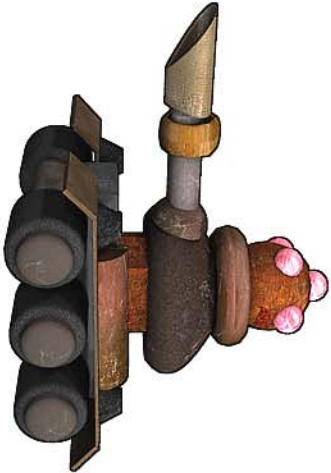
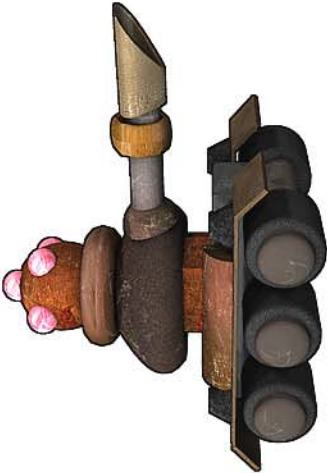
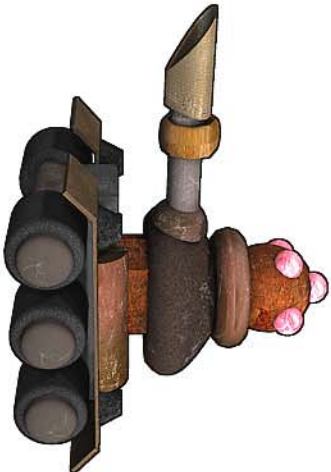
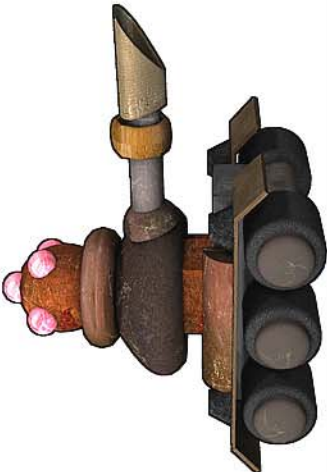
Design & Art
© 2004 Gary M. Williams



**BUDGET
BATTLEFIELD™**

Copyright © 2004
MicroTactix Games
www.microtactix.com

Design & Art
© 2004 Gary M. Williams

Mechanical Expeditionary Force 183 Tank Commando			Artwork ©2004 Gary M. Williams Rendered in Poser™
Mechanical Expeditionary Force 183 Tank Commando			Artwork ©2004 Gary M. Williams Rendered in Poser™
Mechanical Expeditionary Force 183 Tank Commando			Artwork ©2004 Gary M. Williams Rendered in Poser™

M.E.F. 183 TANK COMMANDO



Move: 12 Hit Factor: 10
 Hit Points: 4 Weapon: Plasma Cannon
 Armor: Alloy Plate

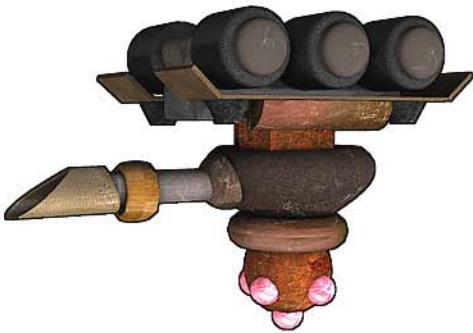
Range: Short 20 Long 40

Attack Roll

ROLL	1	2	3	4	5	6	7	8	9	10
DMG	0	0	0	4	10	16	22	28	34	40

BUDGET BATTLEFIELD™ Cost: 1287
 © 2004 MicroTactix Games

Artwork ©2004 Gary M. Williams
Rendered in Poser™



Mechanical Expeditionary Force 183
Tank Commando