

# THE STONE BRIDGE

from  
MicroTactix Games  
www.microtactix.com



## DISCLAIMER

We have made every effort to make sure that all parts fit together properly, but sometimes tolerances are tight and mistakes do happen. Test fit all pieces before applying glue. Some trimming may be required.

Before photocopying or printing these pages on cardstock, you may wish to assemble a test copy on plain paper to better understand the construction. A minimum of 65# cover stock is recommended for constructing the final models. Regular 20 lb. bond paper can be used, but these items were designed for a heavier stock for extra durability and coloring.

## Tools Required:

Scalpel or sharp-bladed hobby knife

Metal ruler or straightedge

Cutting surface - a self-healing cutting mat is recommended, but a sheet of corrugated cardboard or even heavy poster board will work as well.

Glue - white glue, glue stick or wax stick. Double sided cellophane tape also works well. Rubber cement can be used, but will sometimes stain the cardstock or make it more difficult to color.

## A Note About Using White Glue

White glue contains a good deal of water. Too much glue will warp the card stock so that its almost unusable. Warping may also cause the parts to fit together incorrectly. If you use white glue, put a very thin coat on the glue tabs - the thinner the better. You can use a cotton swab or your finger to spread the glue thin. Remember to keep a damp paper towel handy to remove any excess glue.

## PLEASE NOTE:

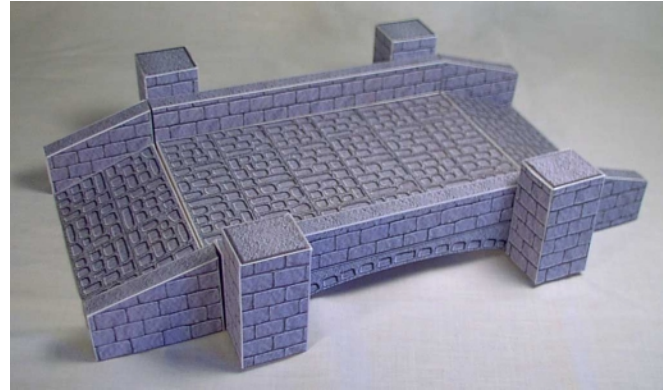
Each item has been marked with a series of Grey Lines that are an indicator that these lines are Fold or Score lines. All Tabs which are to be glued to hold the structures together are marked with a capital letter (G). Unless otherwise noted, all Glue Tabs fold inwards to the structure.

## PLEASE NOTE:

Pages 1 and 3 will need to be printed twice for basic bridge construction. Pages 4 and 7 will need to be printed twice for the tower option. The pages are marked on the files.

THE STONE BRIDGE is a modified color version of the MicroTactix product that first appeared in 2001. The bridge was designed to be modular in construction. It can be made as long as desired or as wide as desired by adding the center sections, ramp sections and side arch sections.

To begin construction of a basic bridge, make 2 copies of Page 1 (the ramp, the arched side wall and ramp



A basic stone bridge.

side walls), cut out and score as indicated. To build the ramp, fold down the left and right sides and fold down the back panel. Glue the tabs to the inside. To construct the ramp side walls fold in the left and right walls and glue the tabs to the inside. Fold down the top panel and glue to the tabs on the tops of the side walls. Fold down the inside wall and glue to the tabs on the ends of the side wall. To construct the arched side wall, cut out the piece making sure to cut along the curved arch. The two blank panels on either side will be for placement of the support columns. Fold in the ends and fold down the tabs. Fold down the top panel and glue to the tabs at the top of the ends. Fold down the back panel and glue to the tabs at the edges of the end panels.

Cut out and score the main body of the bridge on Page 2. For the basic bridge you will need only 1 copy. Make sure you cut out the arch as this will match the arch cutout in the side walls. Fold down the sides and fold down each end, gluing the tabs to the inside. Set this section aside to dry.

When all the pieces of the basic bridge are dry, final assembly can start. There are 2 options you can use for final assembly. The two ramps can be glued directly to the ends of the main body or the clips on the last page can be used so that the bridge can be taken apart for storage. In either case, the ramp side walls will have to be glued to either side of the ramp. See photograph for illustration. For the final piece of assembly, make 2 copies of Page 3 and cut out and score the two columns marked as Table Top Posts. To assemble, fold down the top and fold the tabs to the inside. Glue the tab to the inside of the wall, working all the way around until you reach the last wall. Glue the long tab on the last wall to the inside to close. When dry, these columns will glue to the blank panels on the side walls and will be flush with the bottom of the bridge. The smaller columns marked Extra Decorative Posts are

assembled the same way as above and can be placed at the front walls of the ramp or as desired.

If you wish to use this bridge in conjunction with the terrain tiles products, such as DIRT CHEEP TERRAIN, use the pieces marked Terrain Tile Posts. The will glue in the same locations as the Table Top Posts but the tops will be flush with the top of the side wall. Please note that the tower option cannot be used with the terrain tiles and is for table top use only.

### CONSTRUCTING THE TOWERS OPTION

Pages 4 thorough 7 contain all the pieces needed to construct the tower option. Please note that two copies of Page 4 and Page 7 will be required to complete this option. To start, cut out the 2 copies of page 4 (the tower body) and score as indicated. Cut out the blank panels on the front wall at this time. Do not glue the tower together at this time. Cut out and score all 4 recessed doorways located on Page 5. Fold up all four sides and fold the triangular glue tabs down and glue to the side walls. This will create a box with all the printed panels on the inside. When dry, fold down the glue tabs along the outside edges. Glue the doorway over the cutout space in the tower body from the inside, lining up the edges. When dry, fold the tower body into a box shape and glue the tab to the inside. Fold down the tabs long the top edges. These will be used for attaching the roof. Cut out and score the roof sections, also located on Page 5. Make all folds before beginning. The tabs along the bottom edges of the roof section will fold out from the roof so you may wish to lightly score these tabs from the back (unprinted) side before folding. Starting from the roof panel that has the tab running down the side, glue the roof skirt to the tab at the bottom of the panel. Work all the way around until reaching the last panel. Glue the tab on the last roof panel as well as the tab on the last roof skirt to the inside. When dry, the roof can be attached to the tower body by applying glue to the tabs along the tower top and pressing the roof into place.

Cut out and score the tower bridge section on Page 6. This will assemble as a box like the center section of the bridge. When dry, glue this piece to the front of one of the towers so that it is underneath the lower doorway. Cut out and fold the walkway floor also located on this page. It will assemble as a box as given above. This section is to be glued underneath the upper doorway. Cut out and score the upper walkway railings. Score and fold down the back panel making a 2 sided piece. When dry, glue the railing to the bottom edge of the upper walkway and the wooden post at the walkway end to the side of the tower. Be sure to match up the bottom edge of the railing with the bottom edge of the walkway. The bottom edge of the inside panel of the railing will fit flush with the top of the walkway. When dry, attach the second tower the same way. The windows on Page 4 can be cut out and glued to the tower as desired.

Page 7 contains a short bridge section that can be used for a number of different options. These pieces are most useful if you want to place the tower piece in

center of the bridge. These pieces will construct like the other bridge sections given above.

On the final page of this set are the tile clips. To assemble, cut out and score as indicated. Make sure to cut out the center section of the clip. Fold along the center line and fold under each end "foot". Glue one "foot" on top of the other to make a triangular shape. These clips are placed between sections to hold them together and keep them from sliding apart during game play.



---

The basic bridge with the towers in the center.

---

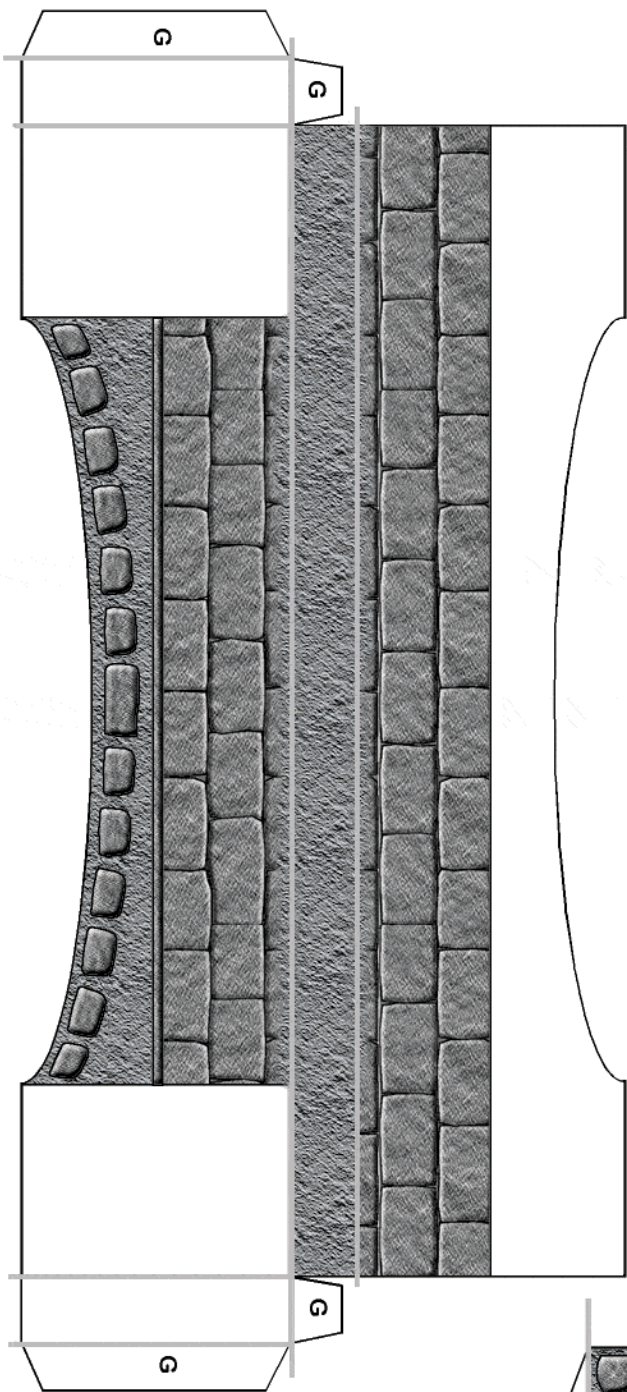


---

A bridge with 2 center sections and the towers placed at one end.

---



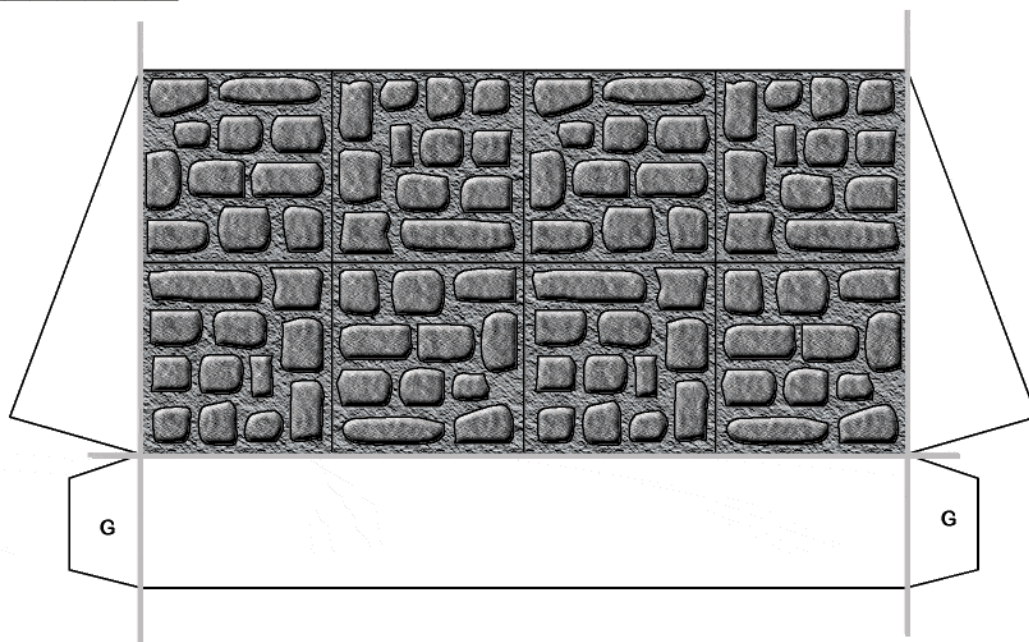
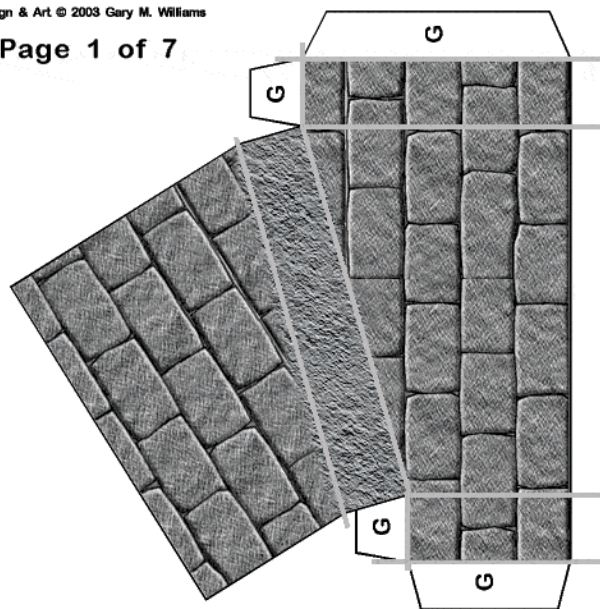
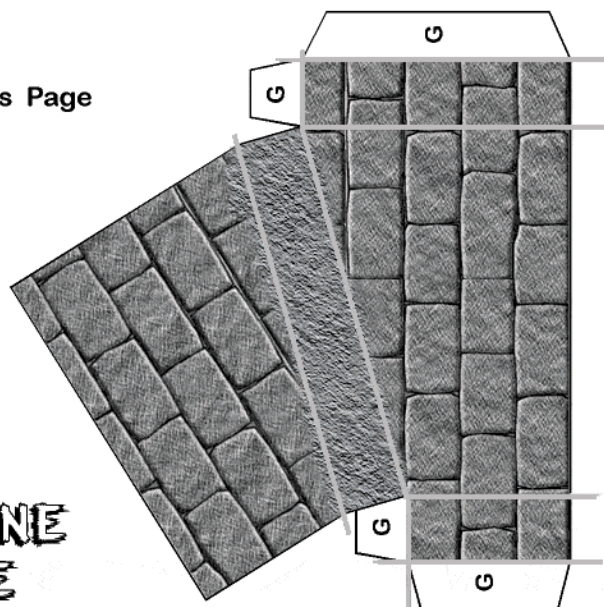


Two Copies This Page

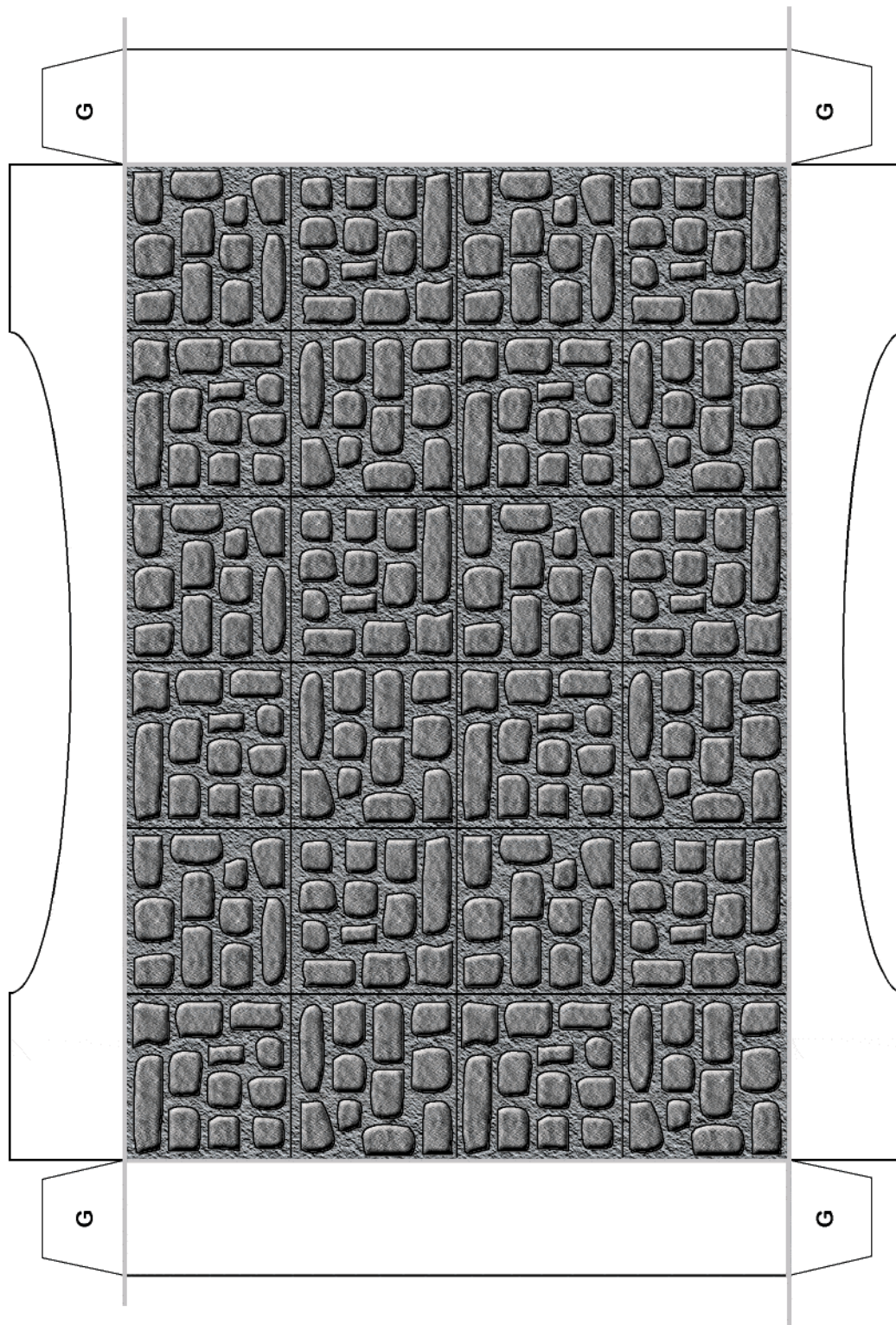
# THE STONE BRIDGE

from MicroTactix Games  
[www.microtactix.com](http://www.microtactix.com)  
Design & Art © 2003 Gary M. Williams

Page 1 of 7







# THE STONE BRIDGE

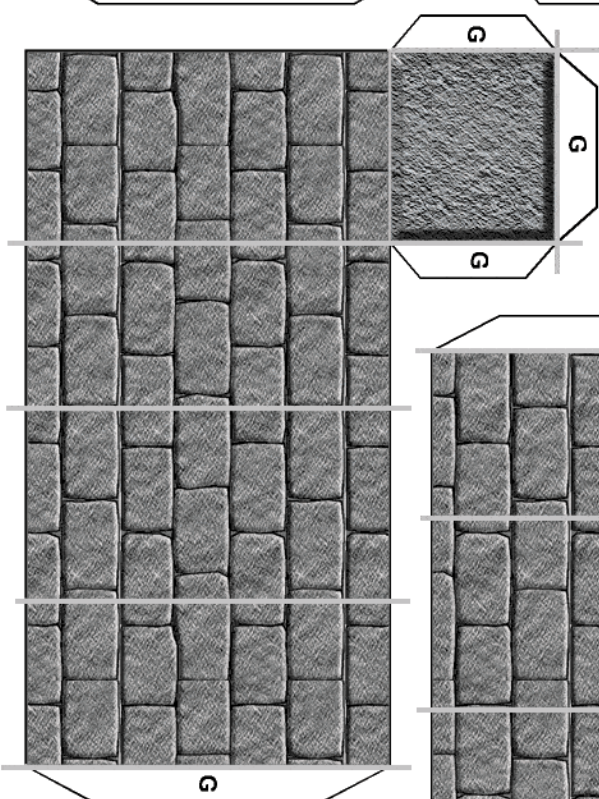
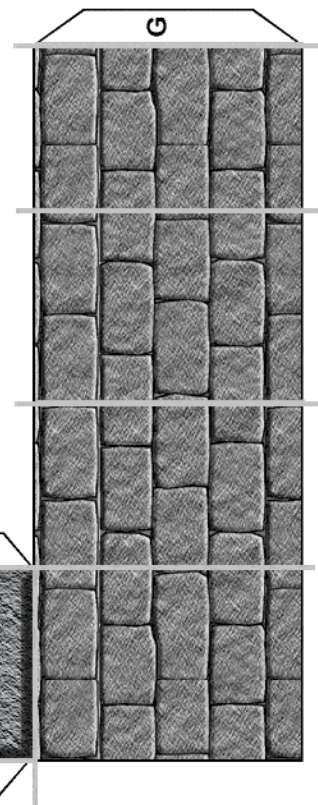
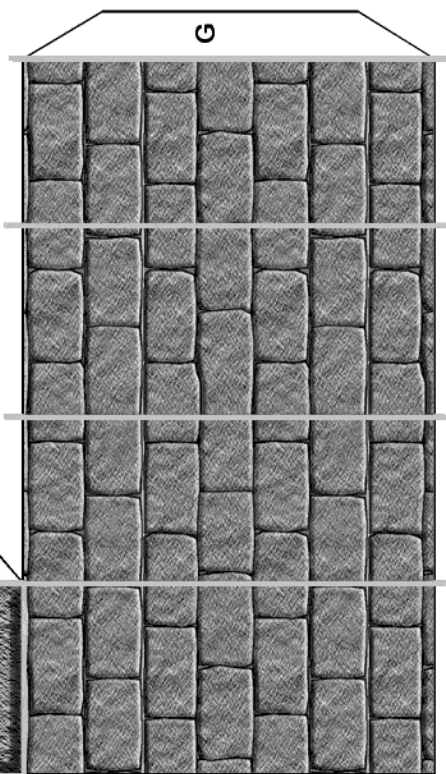
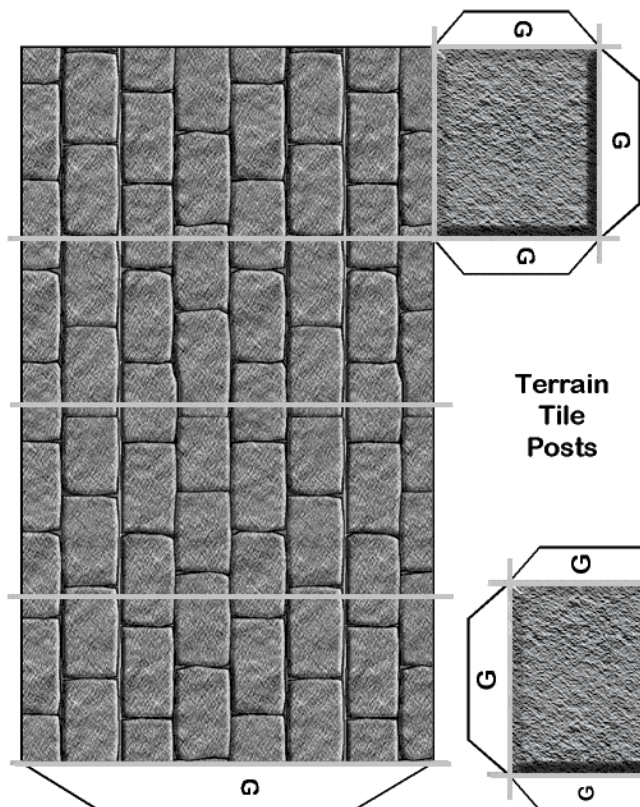
from MicroTactix Games  
[www.microtactix.com](http://www.microtactix.com)  
Design & Art © 2003 Gary M. Williams



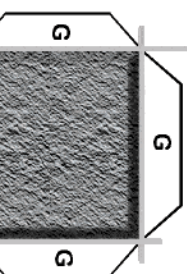
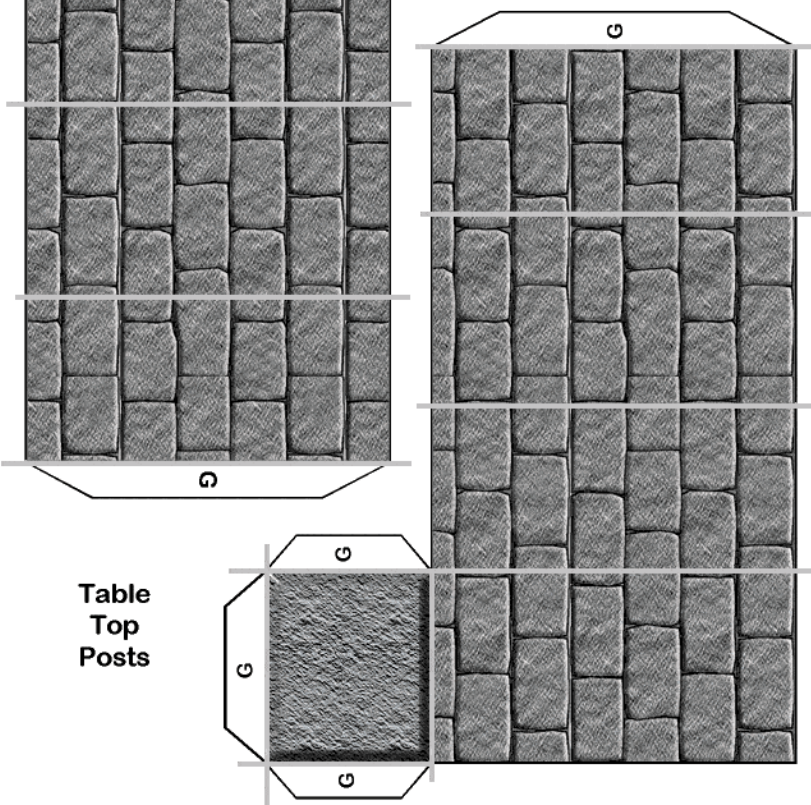
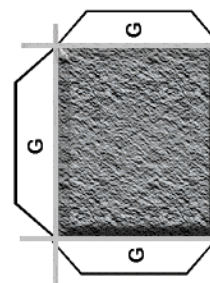
# THE STONE BRIDGE

from MicroTactix Games  
www.microtactix.com  
Design & Art © 2003 Gary M. Williams

Page 3 of 7



Make Two  
This Page



Extra  
Decorative  
Posts

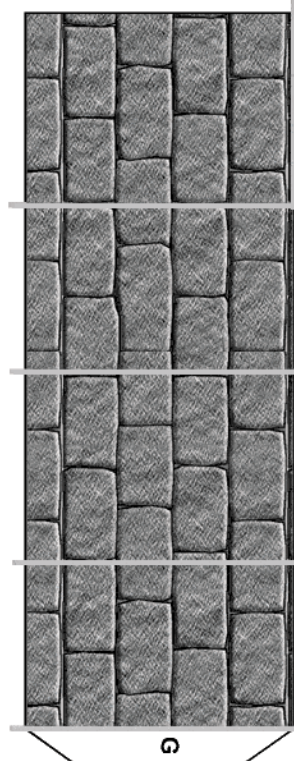
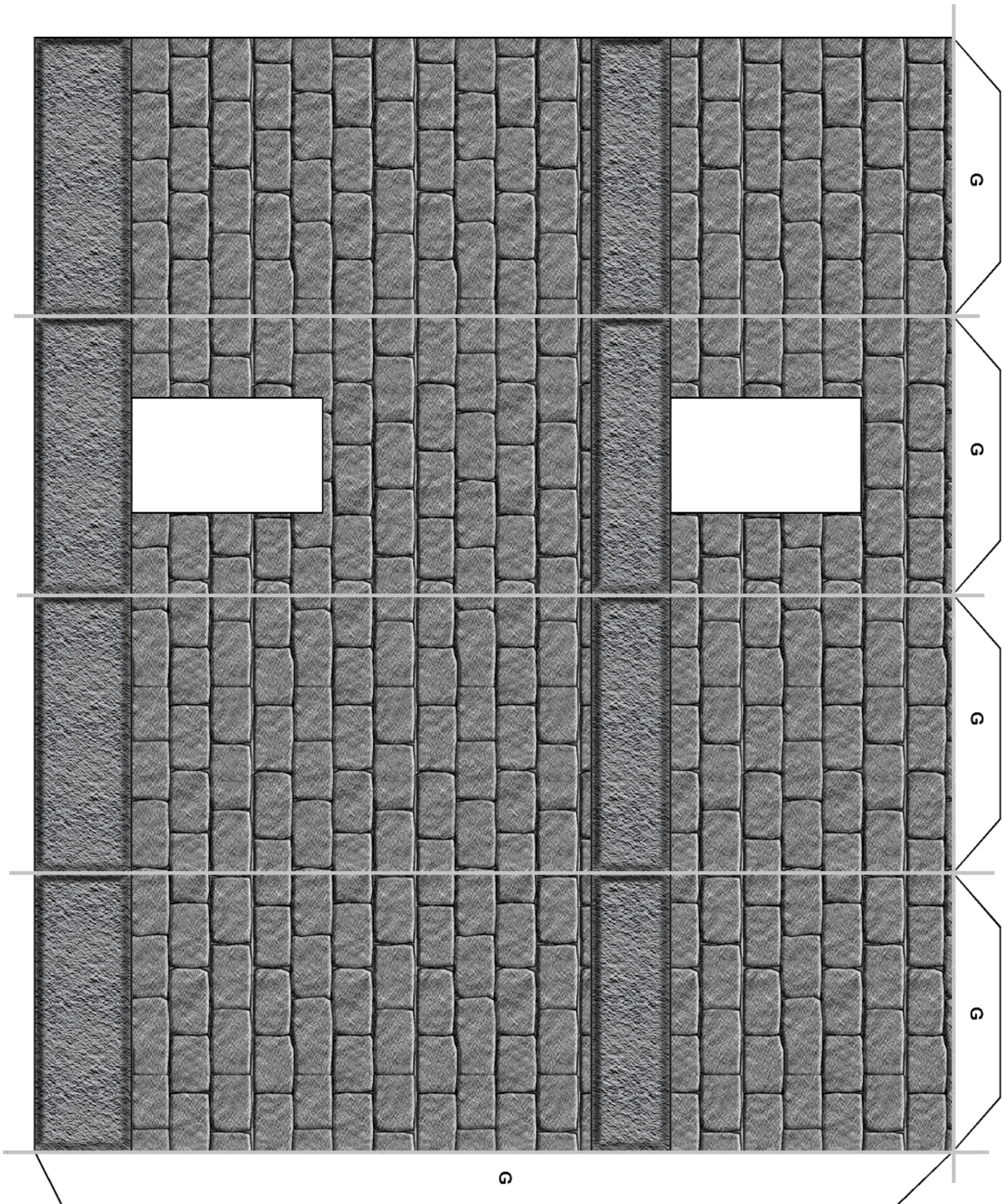


Table  
Top  
Posts



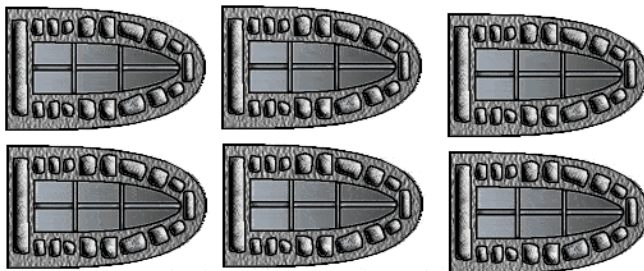


# THE STONE BRIDGE

from MicroTactix Games  
[www.microtactix.com](http://www.microtactix.com)  
 Design & Art © 2003 Gary M. Williams

Page 4 of 7

Two Copies This Page

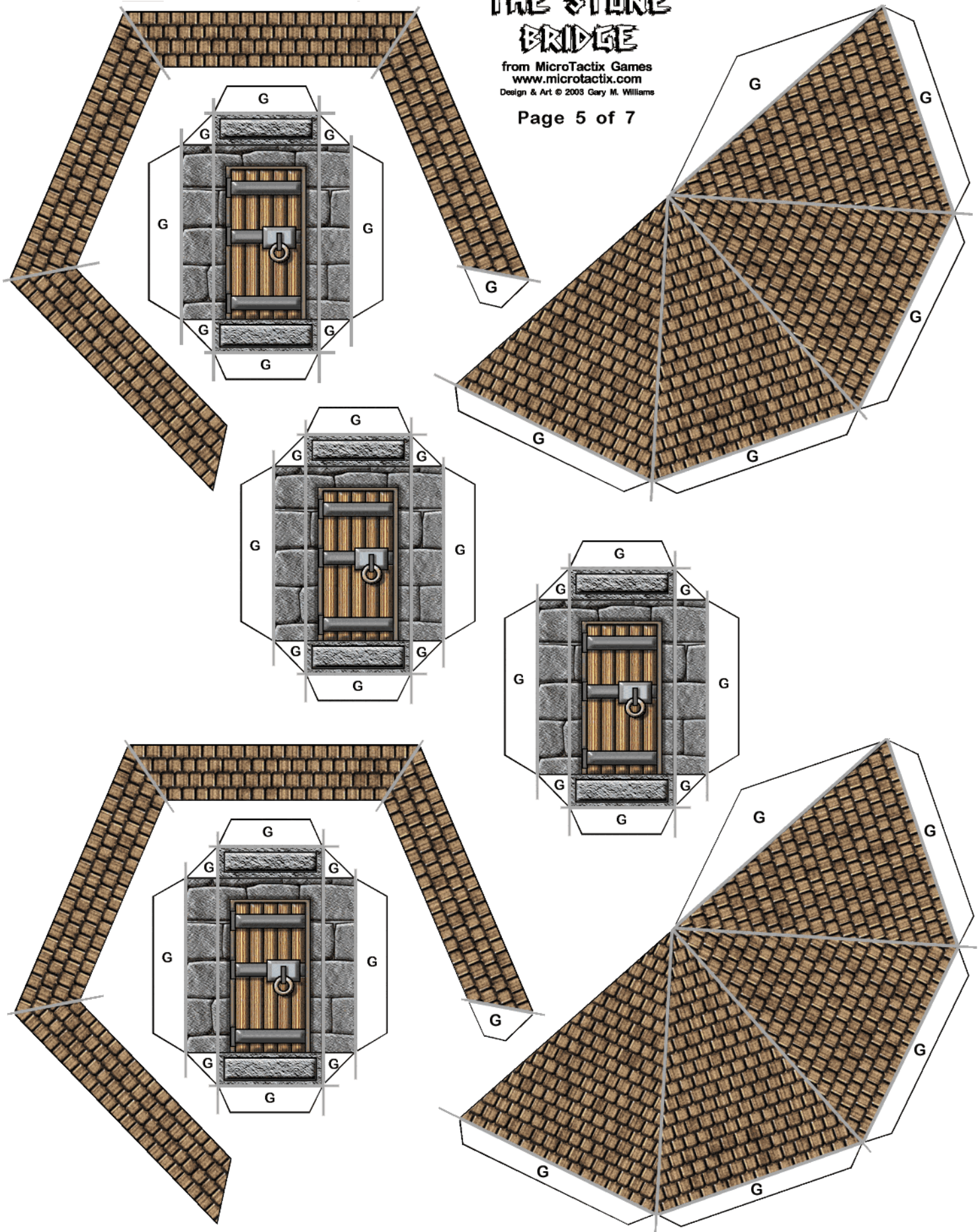




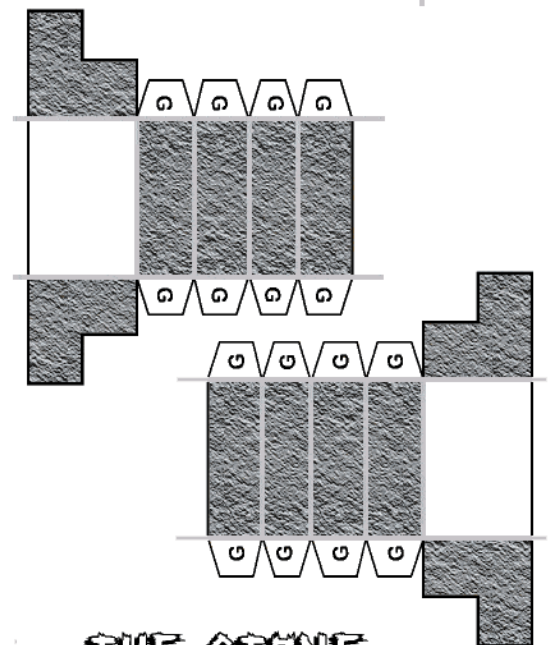
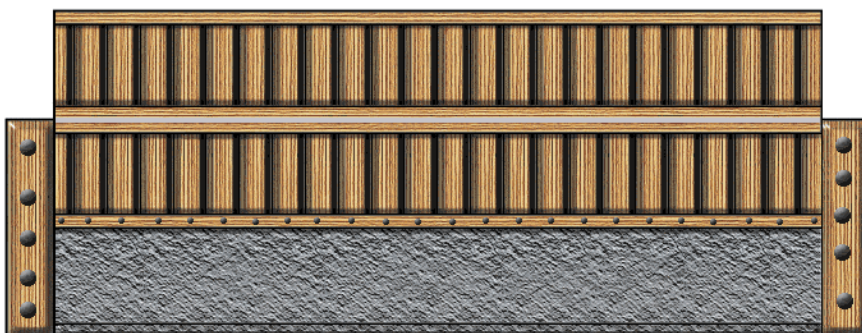
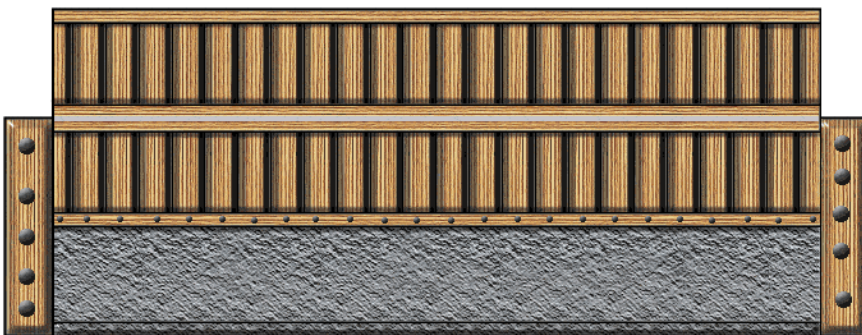
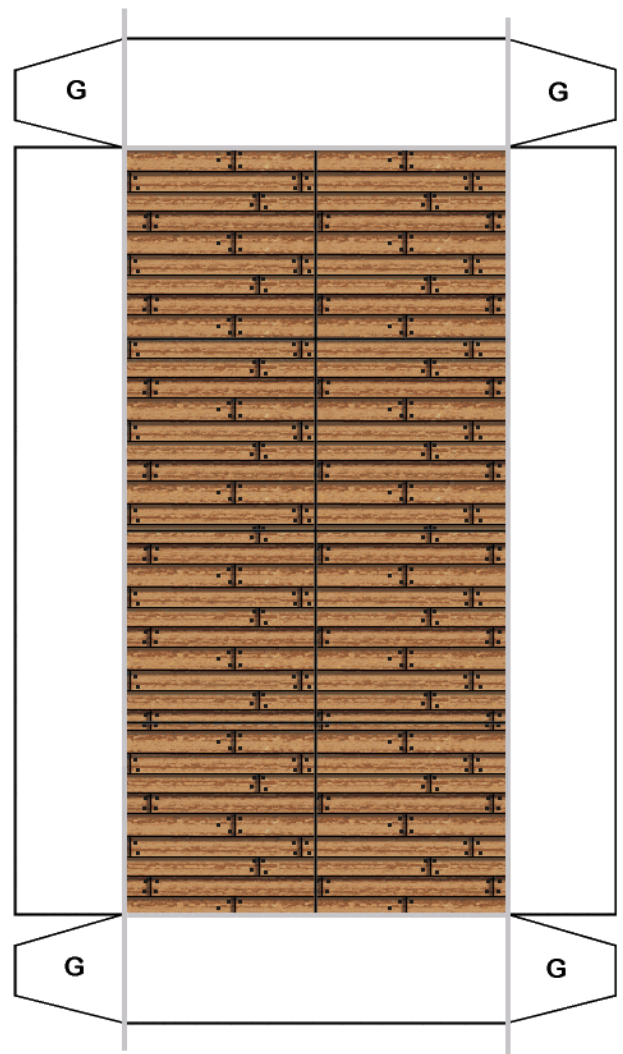
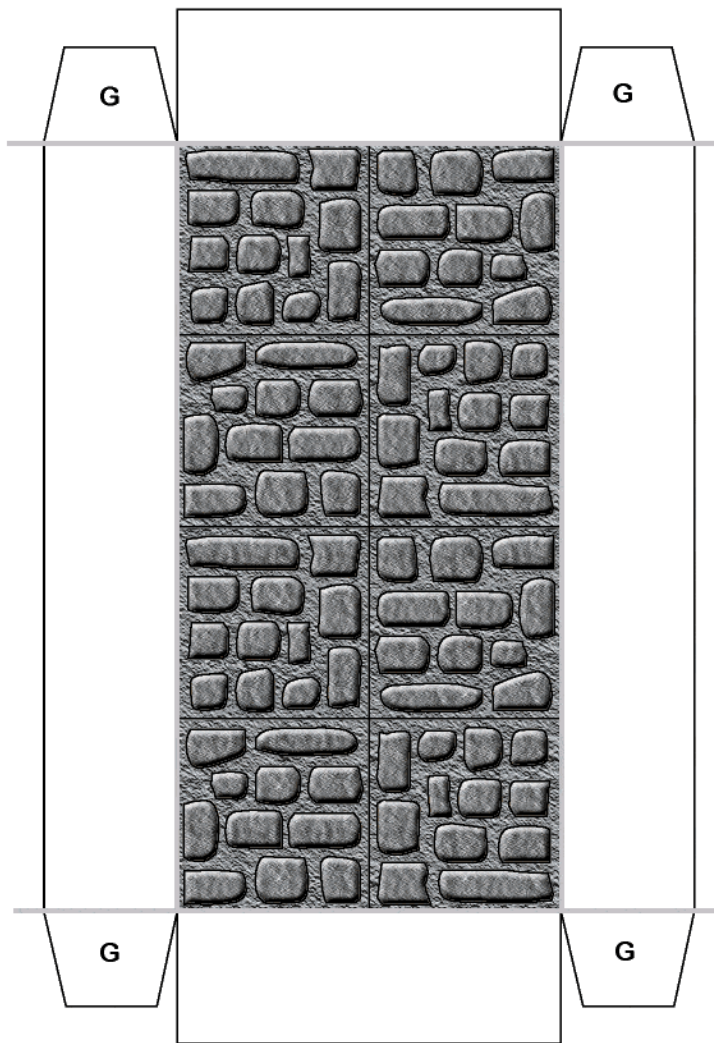
# THE STONE BRIDGE

from MicroTactix Games  
[www.microtactix.com](http://www.microtactix.com)  
Design & Art © 2003 Gary M. Williams

Page 5 of 7







# THE STONE BRIDGE

from MicroTactix Games  
[www.microtactix.com](http://www.microtactix.com)  
 Design & Art © 2003 Gary M. Williams

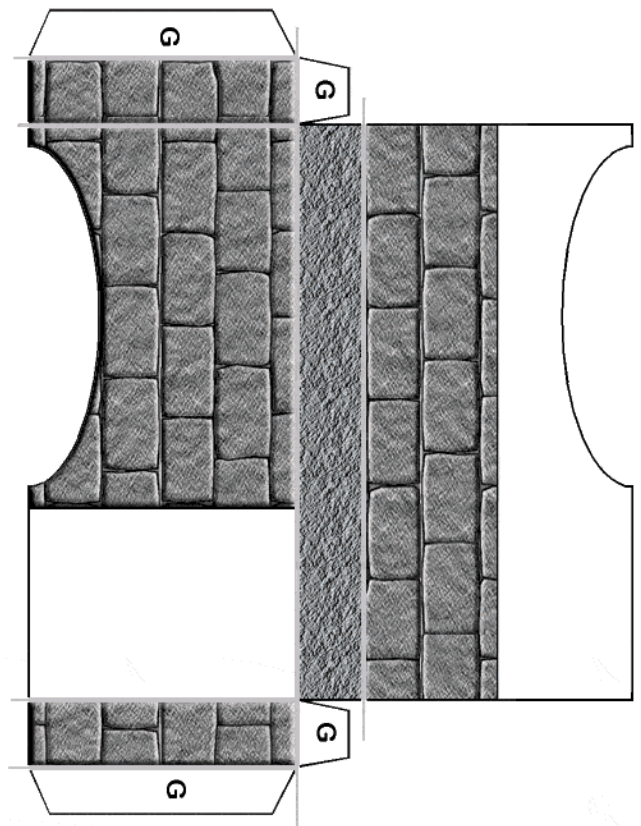
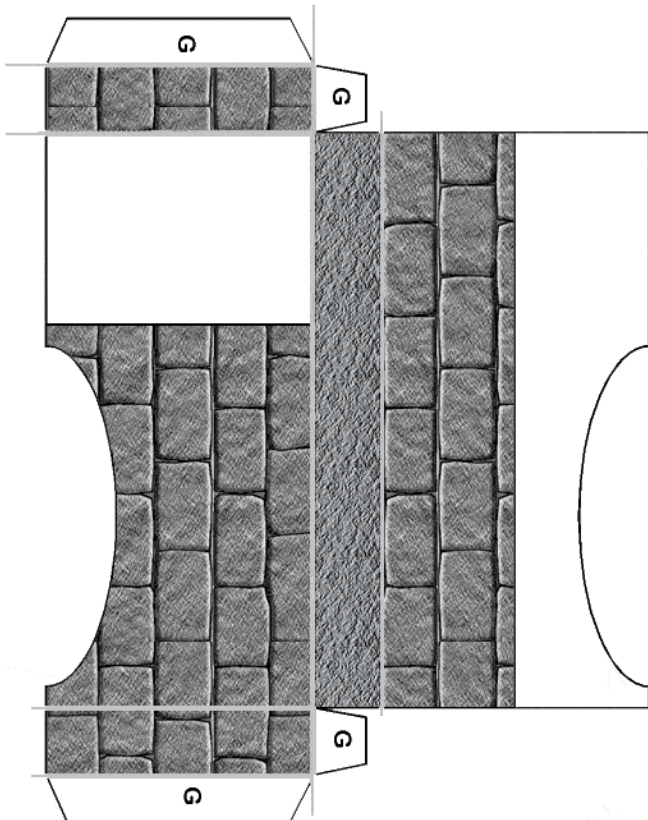
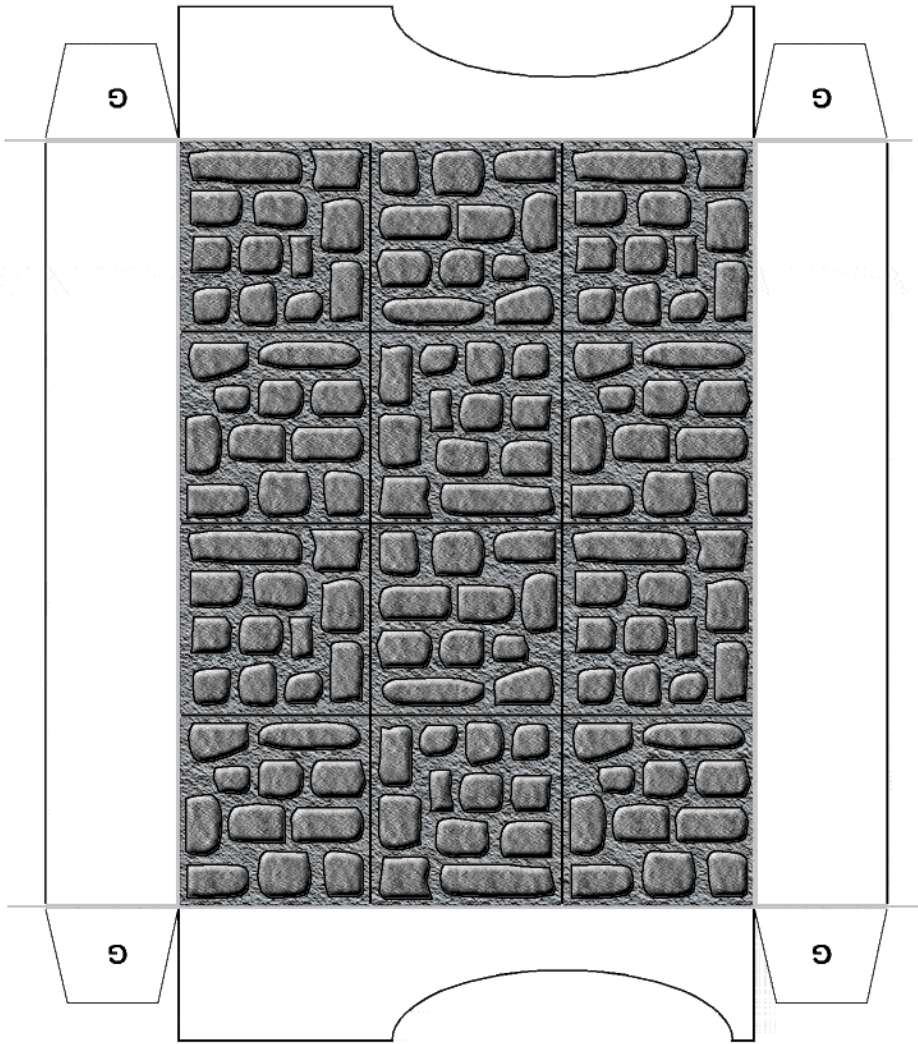


# THE STONE BRIDGE

from MicroTactix Games  
[www.microtactix.com](http://www.microtactix.com)  
Design & Art © 2003 Gary M. Williams

Page 7 of 7

Two Copies This Page






**THE STONE  
BRIDGE**

from MicroTactix Games  
[www.microtactix.com](http://www.microtactix.com)  
Design & Art © 2003 Gary M. Williams

Tile Clips