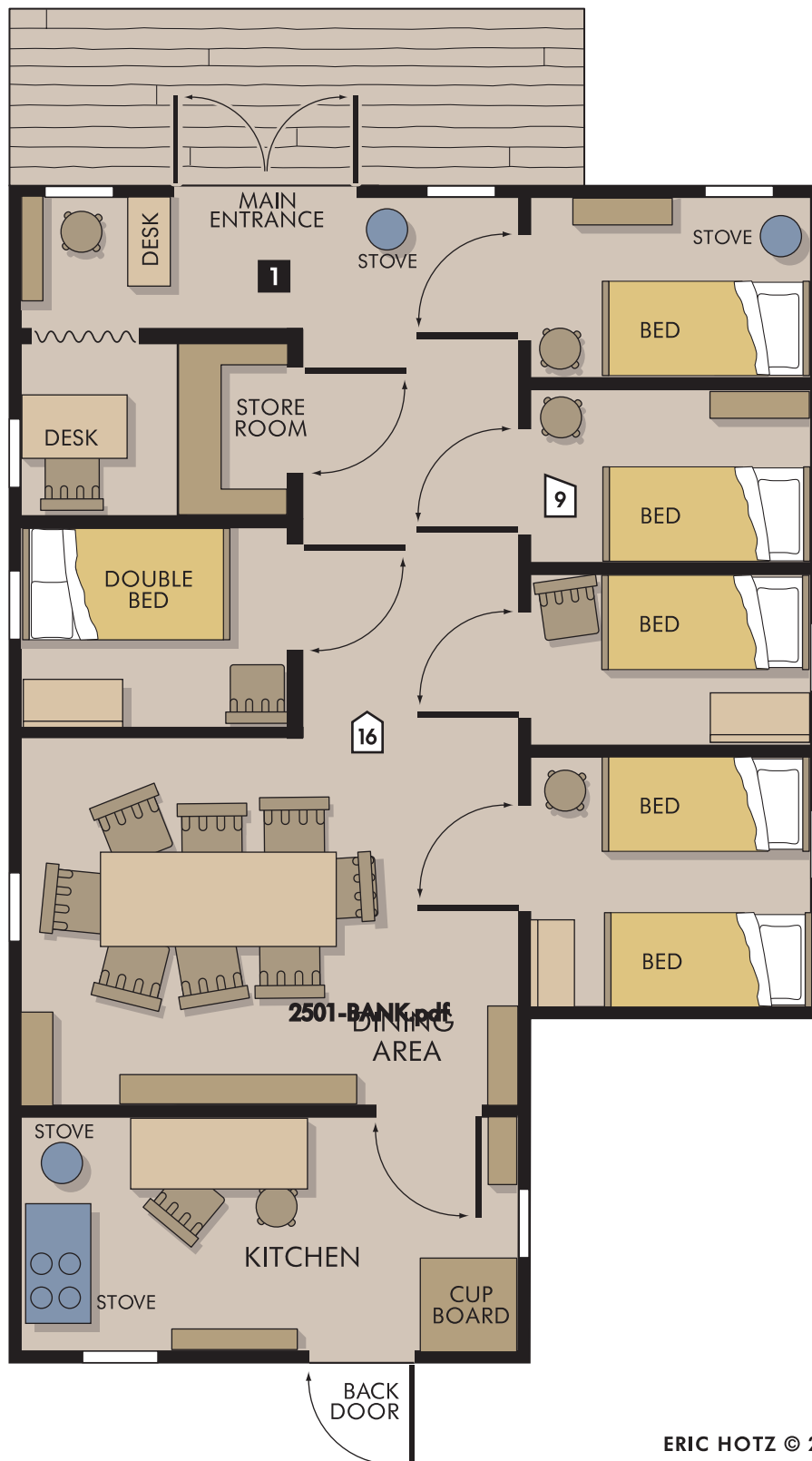


FLOOR PLANS 30mm scale

PAPER PLACES

NOTE: For best results, print onto card stock

WHITEWASH CITY - HOTEL 1868



ERIC HOTZ © 2000/2003 & 2004

Floor Plan Ground Scale (feet)



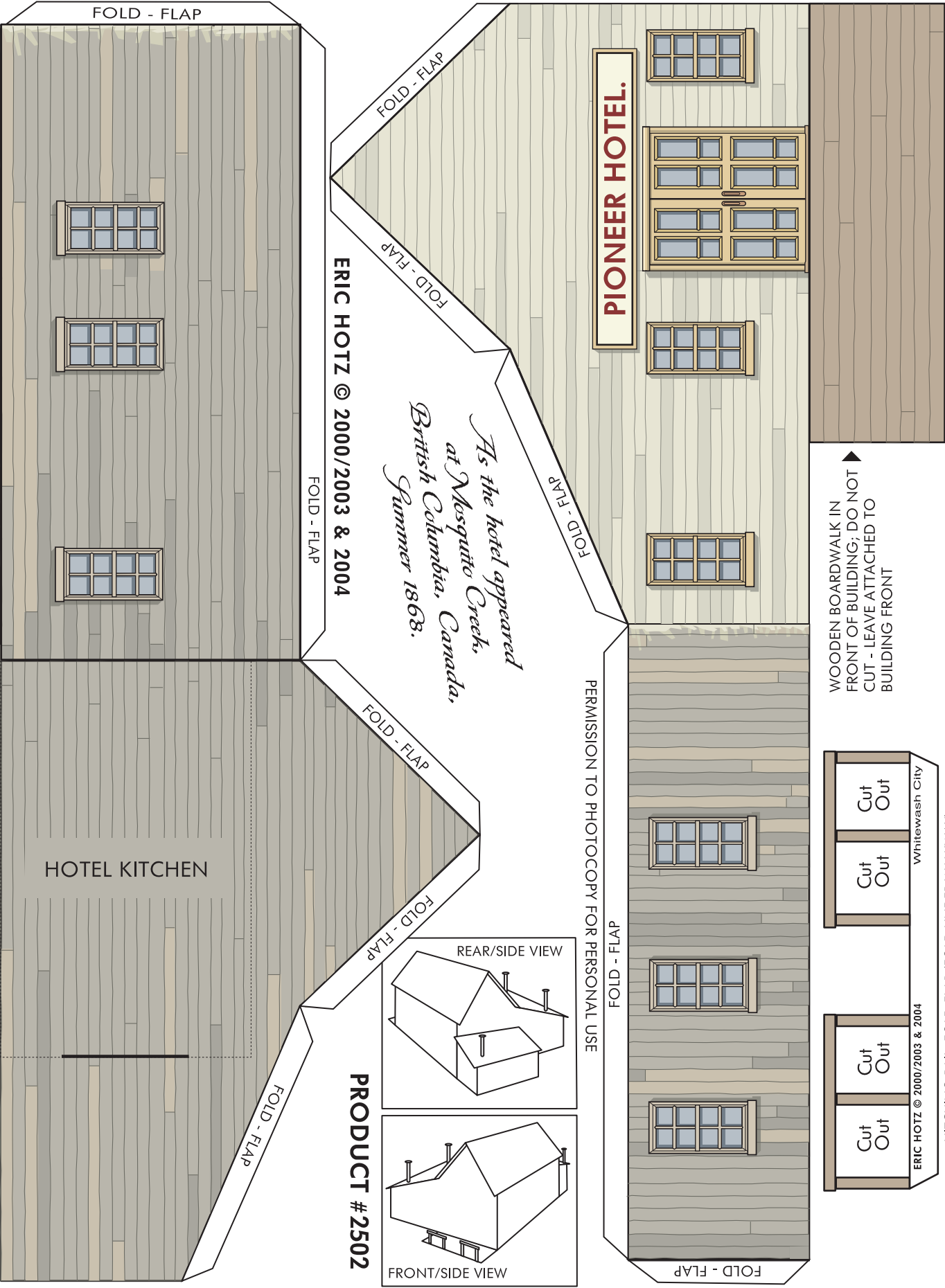
PO Box 125 - Stn. Whonnock Maple Ridge, BC V2W 1V9 Canada

PRODUCT #2502

WWW.ERICHOTZ.COM/WHITEWASH.HTML

PERMISSION TO PHOTOCOPY FOR PERSONAL USE

WHITEWASH CITY: THE PIONEER HOTEL



WOODEN BOARDWALK IN
FRONT OF BUILDING; DO NOT
CUT - LEAVE ATTACHED TO
BUILDING FRONT

Cut Out

Cut Out

Cut Out

Cut Out

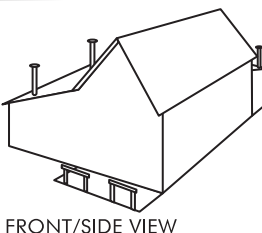
Whitewash City

ERIC HOTZ © 2000/2003 & 2004

HITCHING RAIL: FOLD-FLAP (FOLD UNDER WALKWAY)

PERMISSION TO PHOTOCOPY FOR PERSONAL USE

REAR/SIDE VIEW



FRONT/SIDE VIEW

PRODUCT #2502

ERIC HOTZ © 2000/2003 & 2004

*As the hotel appeared
at Mesquito Creek,
British Columbia, Canada,
Summer 1868.*

HOTEL KITCHEN

FOLD - FLAP

FOLD - FLAP

FOLD - FLAP

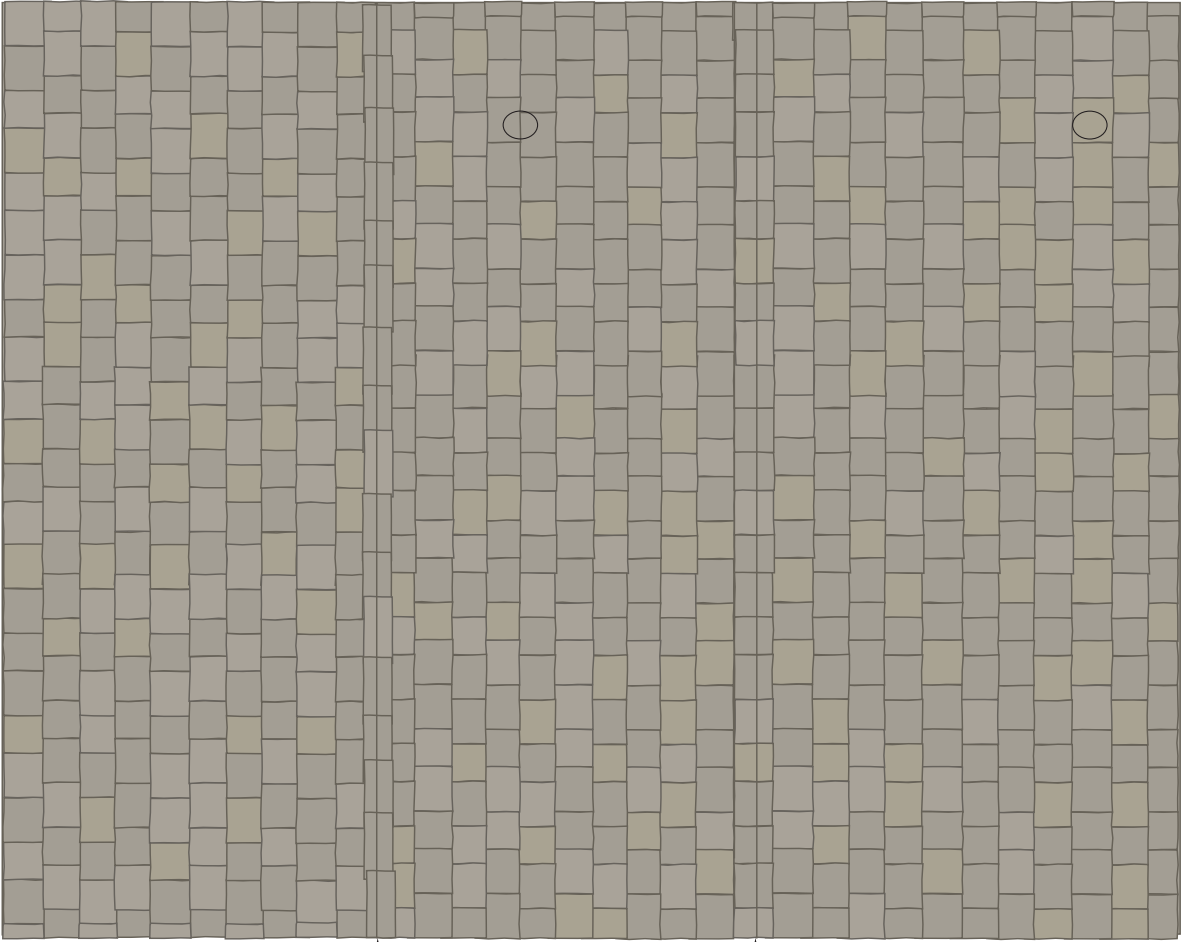
FOLD - FLAP

FOLD - FLAP

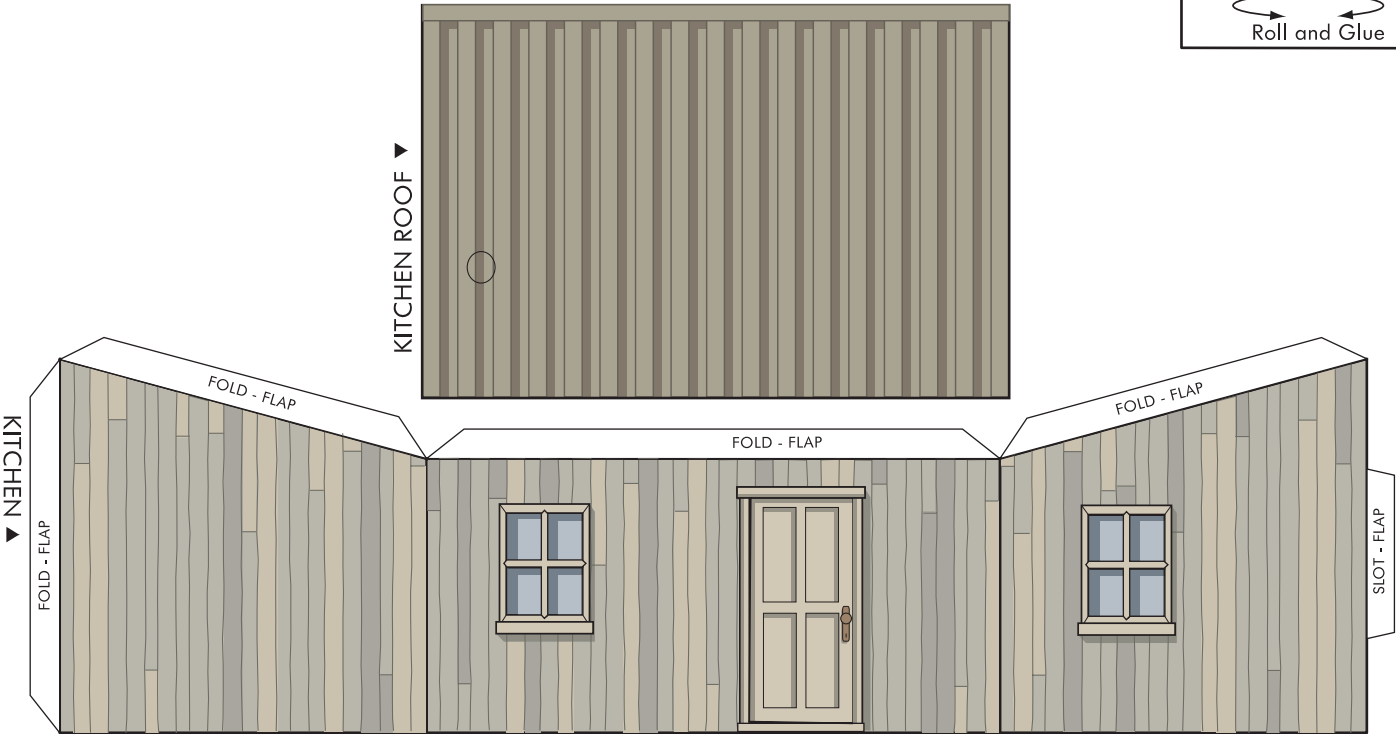
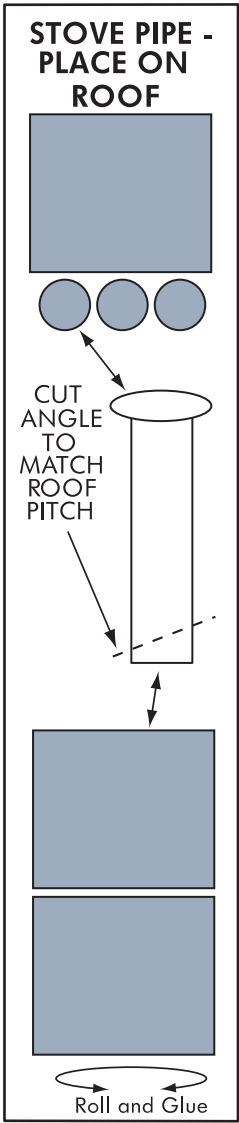
FOLD - FLAP

FOLD - FLAP

WHITEWASH CITY: THE PIONEER HOTEL



FOLD HERE ↑ FOLD HERE ↑



PAPER PLACES

NOTE: For best results, print onto card stock

This floor plan illustrates a 16-room hotel layout. A central corridor, labeled '16' in a house-shaped icon, provides access to various rooms. At the top, a 'MAIN ENTRANCE' leads into a common area with a 'STOVE' and a 'DESK'. To the left of the entrance is a 'DOUBLE BED' room, and to the right is a 'STORE ROOM'. The bottom section features a 'DINING AREA' with a large table and chairs, and a 'KITCHEN' with two 'STOVE' units and a 'CUP BOARD'. A 'BACK DOOR' is located at the bottom center. On the right side, there are five individual 'BED' rooms, each with a 'STOVE' and a 'DESK'. A small room labeled '9' is also situated near the central corridor. The plan uses simple line drawings to represent furniture and fixtures, with curved arrows indicating the flow of movement through the space.

ERIC HOTZ © 2000/2003 & 2004

Floor Plan Ground Scale (feet)



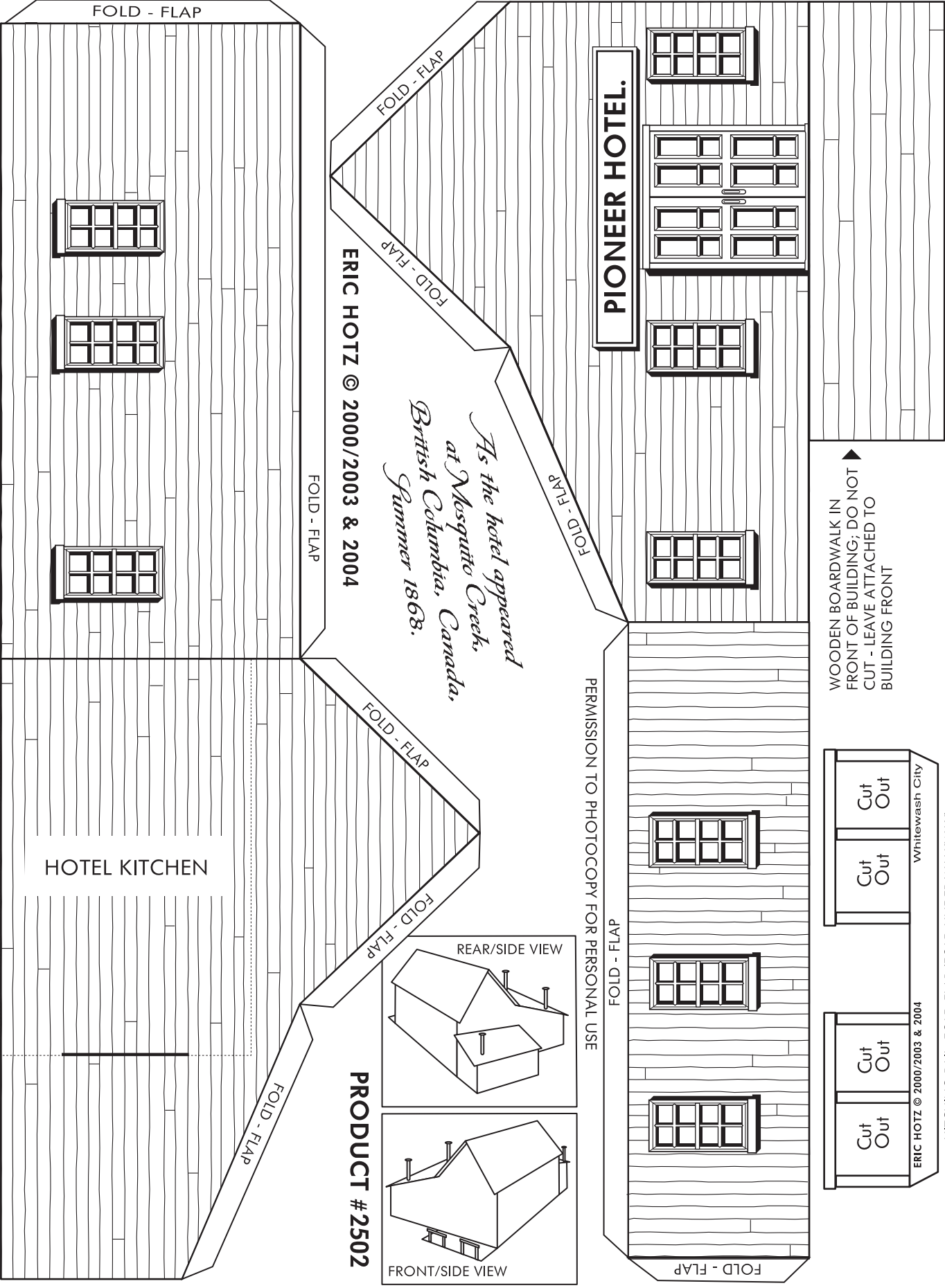
PO Box 125 - Str. Whonnock Maple Ridge, BC V2W 1V9 Canada

PERMISSION TO PHOTOCOPY FOR PERSONAL USE

WWW.ERICHOTZ.COM/WHITEWASH.HTML

PRODUCT #2502

WHITEWASH CITY- THE PIONEER HOTEL



FOLD - FLAP

FOLD - FLAP

FOLD - FLAP

FOLD - FLAP

FOLD - FLAP

FOLD - FLAP

FOLD - FLAP

FOLD - FLAP

FOLD - FLAP

PIONEER HOTEL.

*As the hotel appeared
at Mosquito Creek,
British Columbia, Canada,
Summer 1868.*

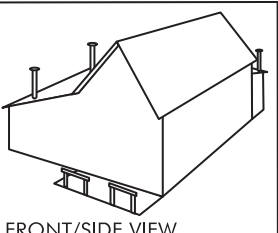
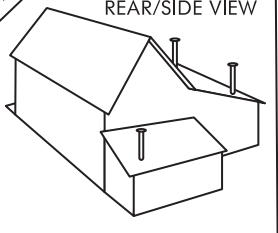
ERIC HOTZ © 2000/2003 & 2004

HOTEL KITCHEN

PERMISSION TO PHOTOCOPY FOR PERSONAL USE

DTL - DTG

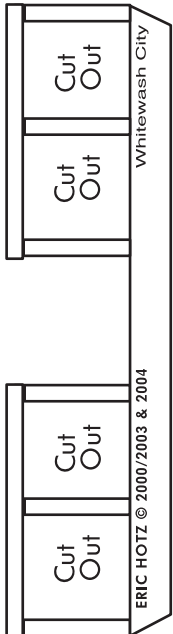
REAR/SIDE VIEW



FRONT/SIDE VIEW

PRODUCT #2502

WOODEN BOARDWALK IN
FRONT OF BUILDING; DO NOT
CUT - LEAVE ATTACHED TO
BUILDING FRONT

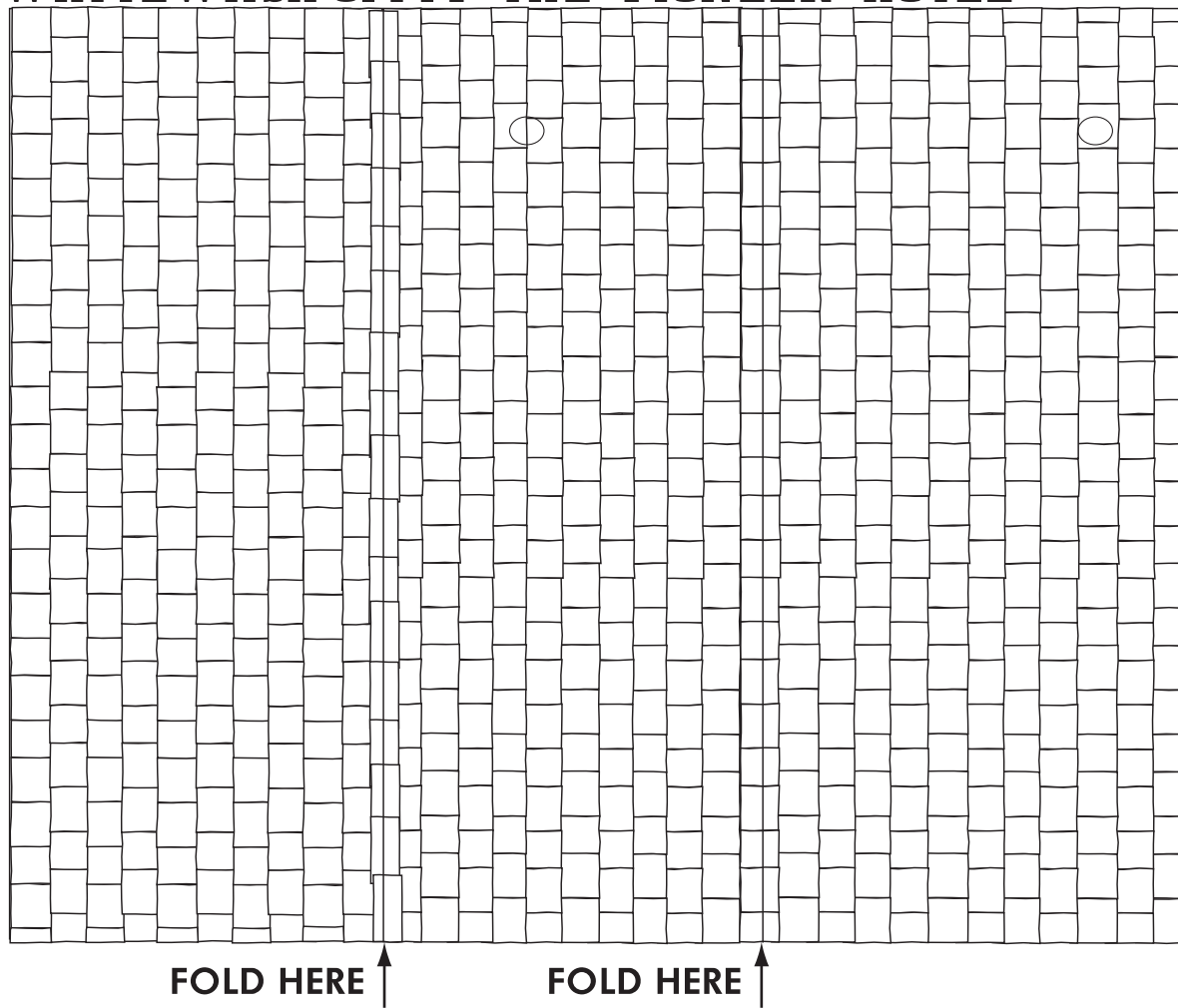


HITCHING RAIL: FOLD-FLAP (FOLD UNDER WALKWAY)

Whitewash City

ERIC HOTZ © 2000/2003 & 2004

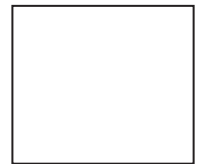
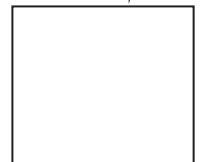
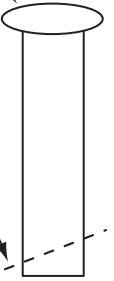
WHITEWASH CITY: THE PIONEER HOTEL



STOVE PIPE -
PLACE ON
ROOF



CUT
ANGLE
TO
MATCH
ROOF
PITCH



Roll and Glue

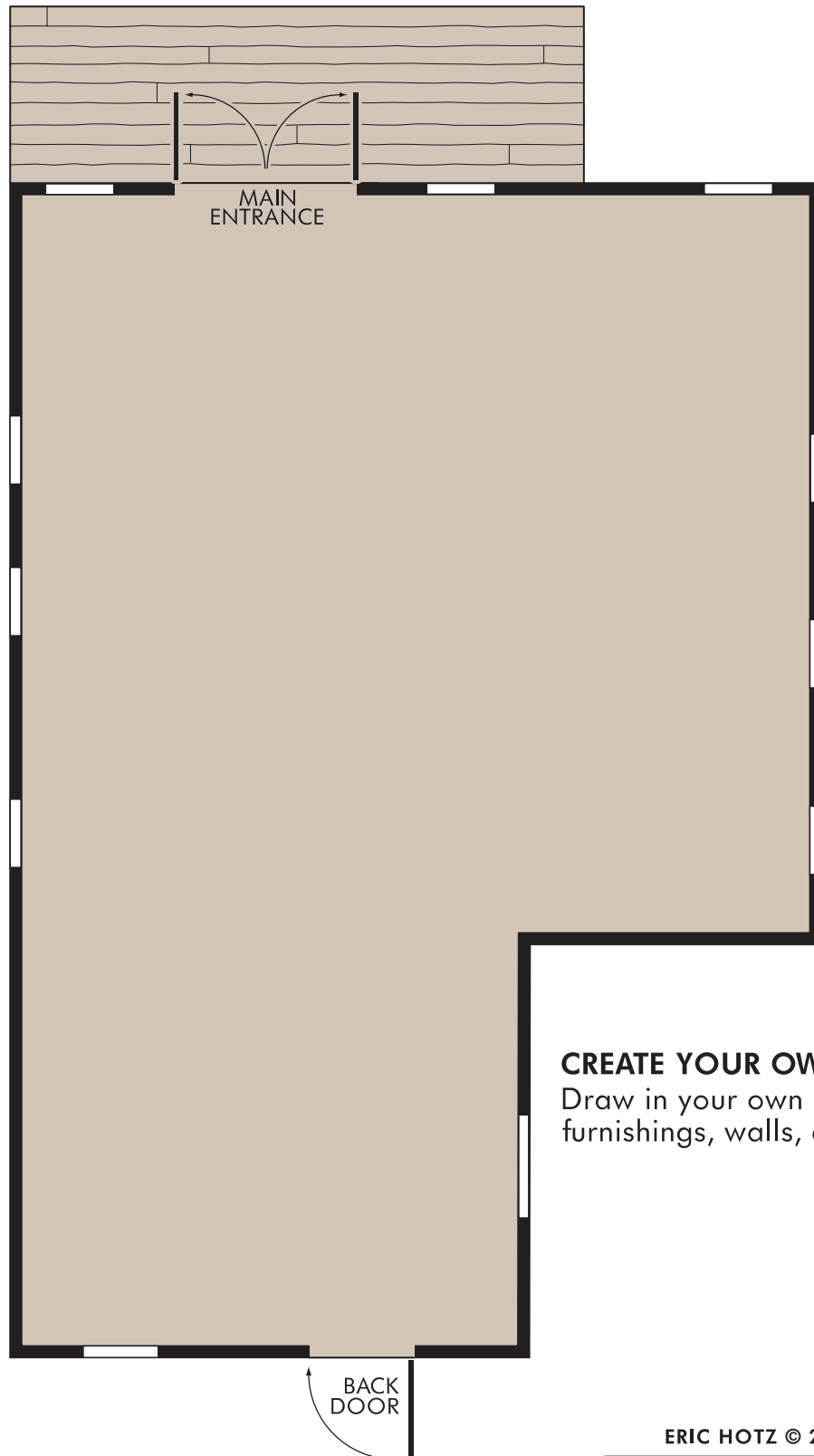


FLOOR PLANS 30mm scale

PAPER PLACES

NOTE: For best results, print onto card stock

WHITEWASH CITY - HOTEL 1868



CREATE YOUR OWN INTERIORS

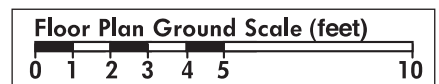
Draw in your own interior furnishings, walls, doors, etc.

PERMISSION TO PHOTOCOPY FOR PERSONAL USE

WWW.ERICHOTZ.COM/WHITEWASH.HTML

PRODUCT #2502

ERIC HOTZ © 2000/2003 & 2004



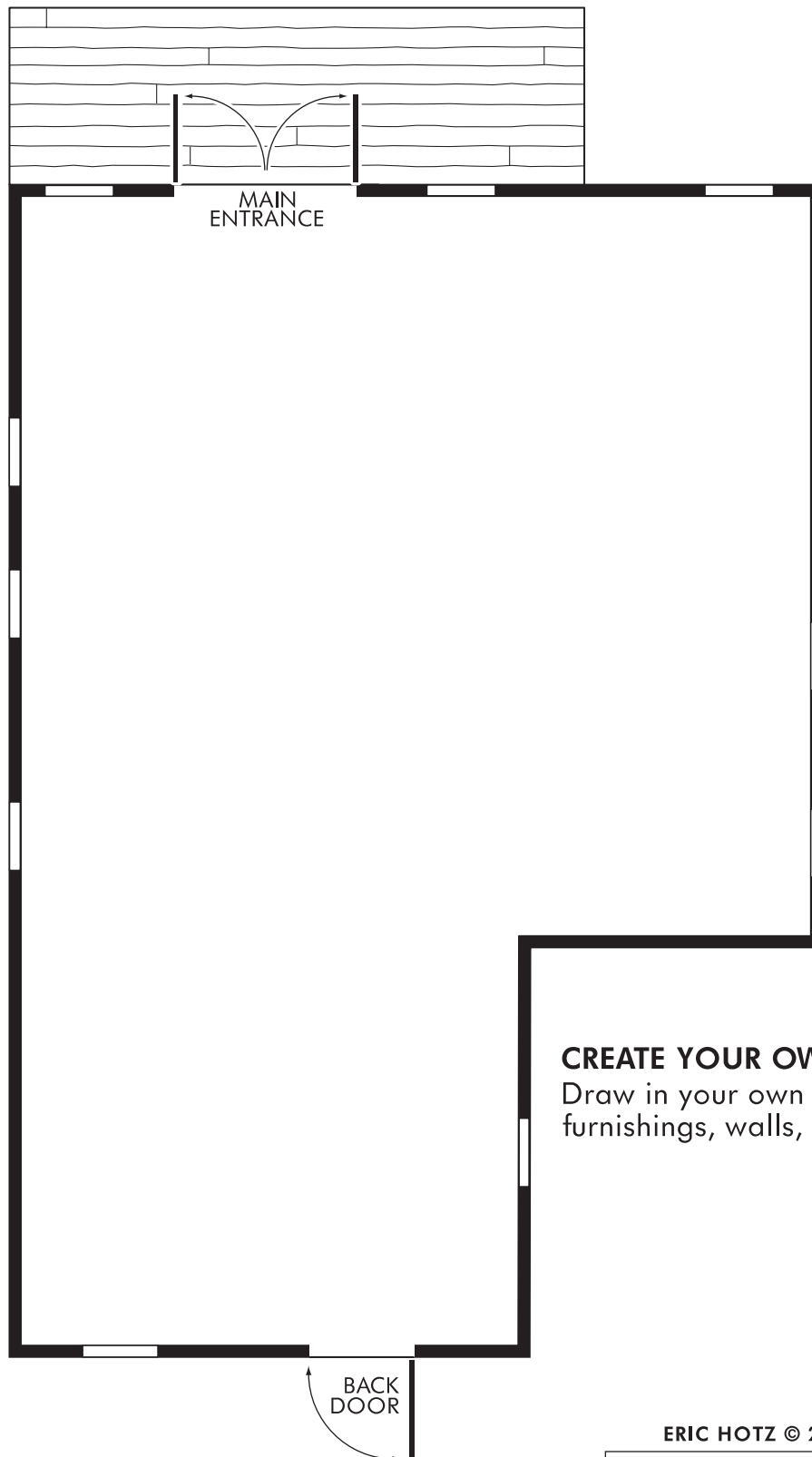
PO Box 125 - Stn. Whonnock Maple Ridge, BC V2W 1V9 Canada

FLOOR PLANS 30mm scale

PAPER PLACES

NOTE: For best results, print onto card stock

WHITEWASH CITY - HOTEL 1868



CREATE YOUR OWN INTERIORS
Draw in your own interior
furnishings, walls, doors, etc.

ERIC HOTZ © 2000/2003 & 2004



PO Box 125 - Str. Whonnock Maple Ridge, BC V2W 1V9 Canada

PERMISSION TO PHOTOCOPY FOR PERSONAL USE

WWW.ERICHOTZ.COM/WHITEWASH.HTML

PRODUCT #2502