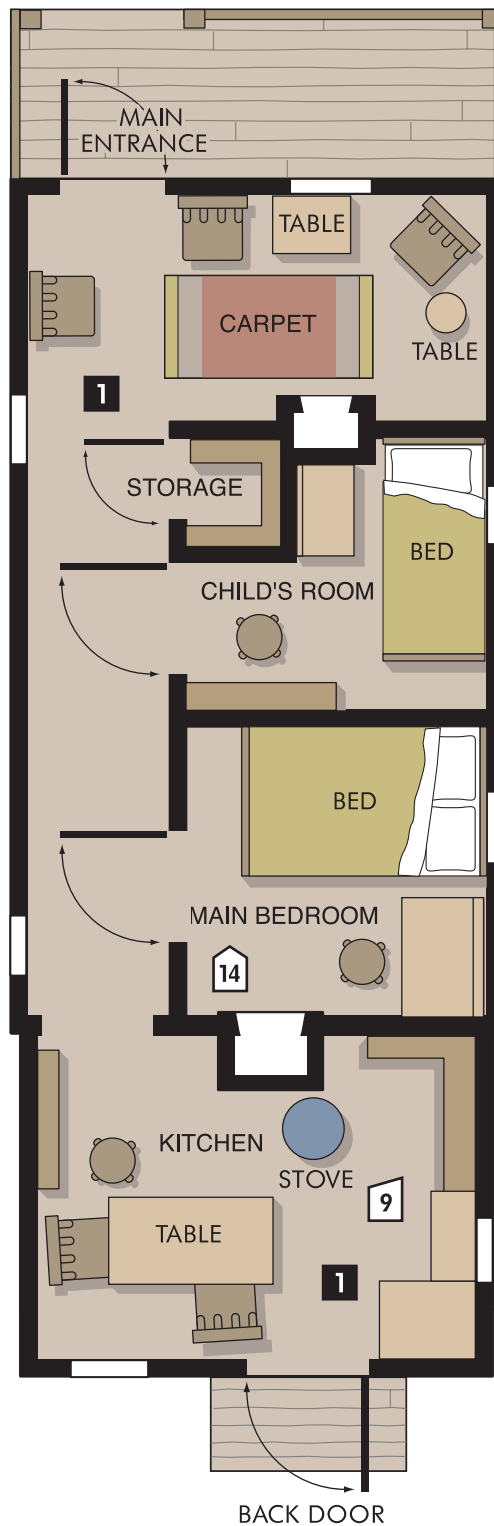


FLOOR PLANS 30mm scale

NOTE: For best results, print onto card stock

PAPER PLACES

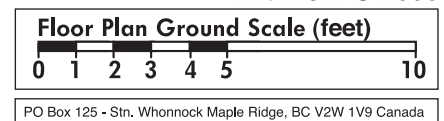


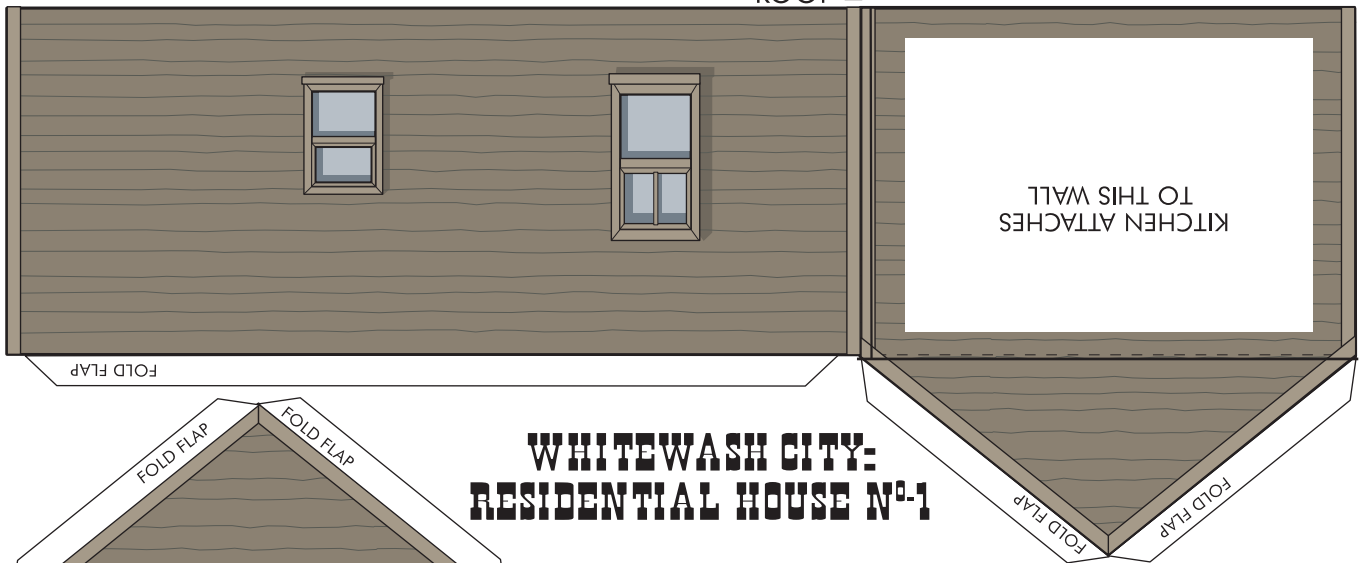
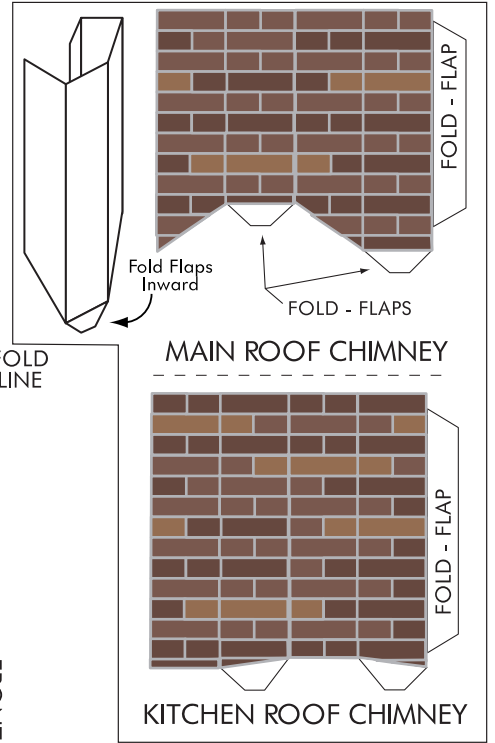
PERMISSION TO PHOTOCOPY FOR PERSONAL USE

WWW.ERICHOTZ.COM/WHITEWASH.HTML

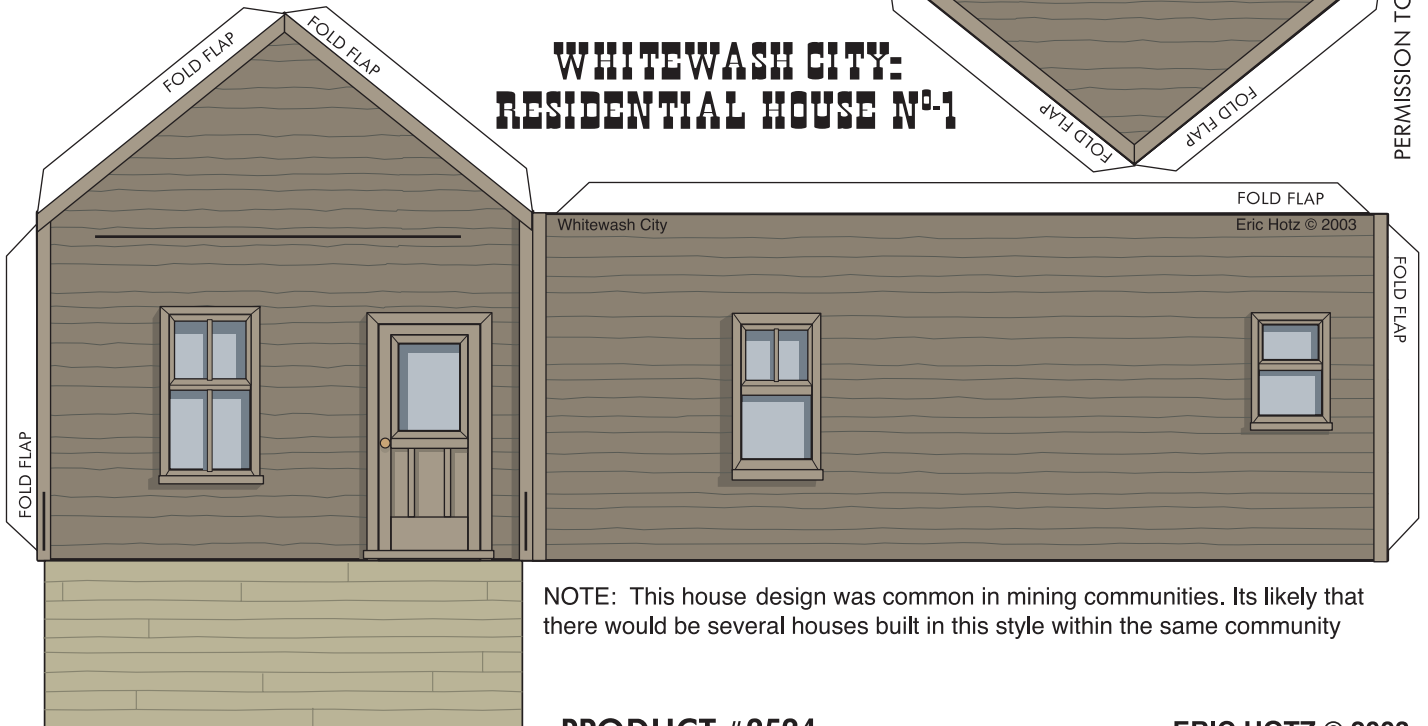
PRODUCT #2524

Eric Hotz © 2003





WHITEWASH CITY: RESIDENTIAL HOUSE Nº-1



NOTE: This house design was common in mining communities. Its likely that there would be several houses built in this style within the same community

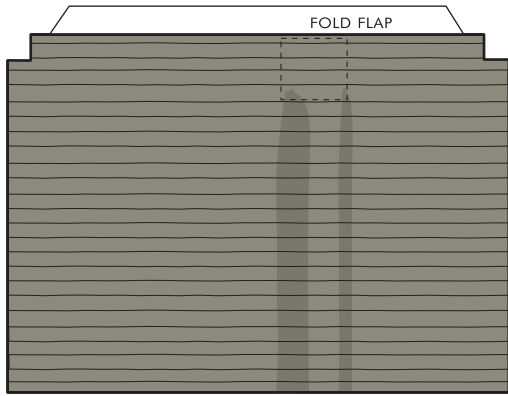
PRODUCT #2524

ERIC HOTZ © 2003

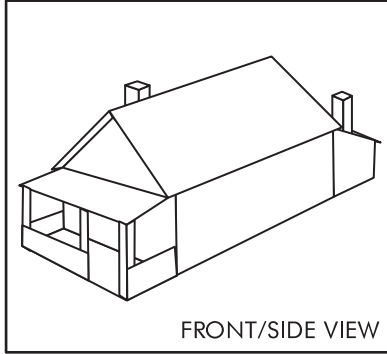
PERMISSION TO PHOTOCOPY FOR PERSONAL USE

WHITEWASH CITY: RESIDENTIAL HOUSE N°-1

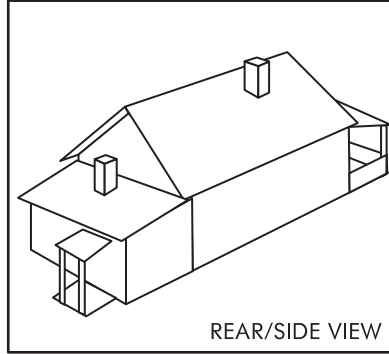
*Typical Residential Home
as it appeared at the mining town
of Anaconda,
British Columbia, Canada*



▲ KITCHEN ROOF

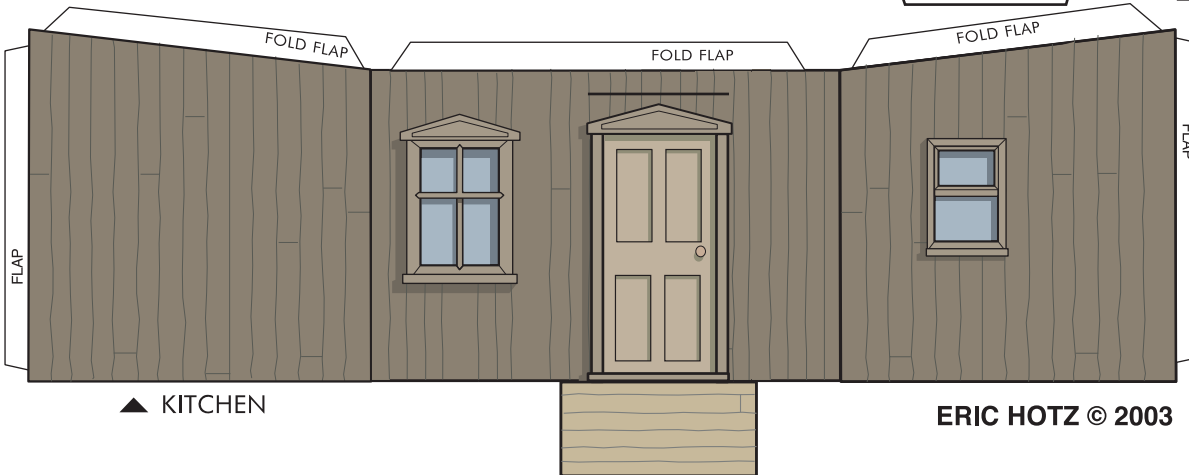
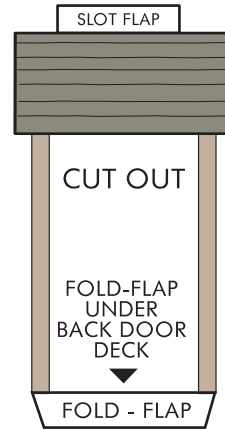


FRONT/SIDE VIEW



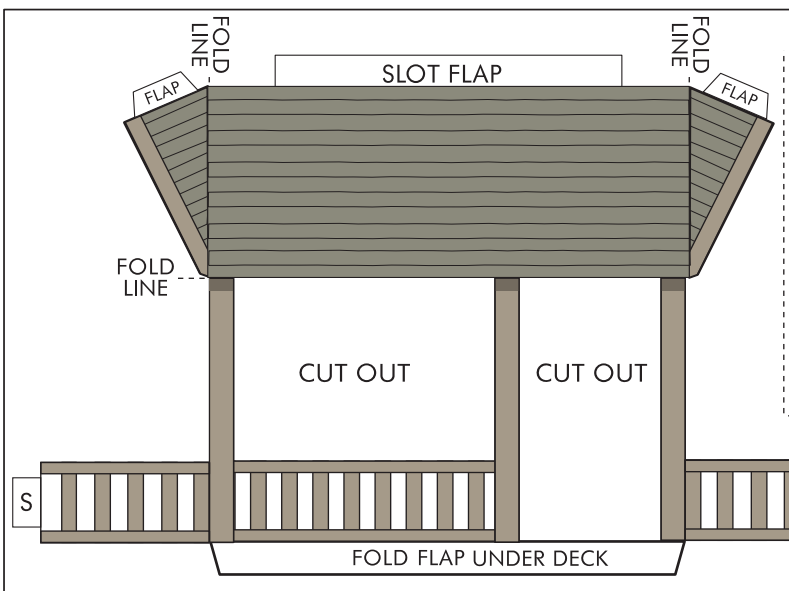
REAR/SIDE VIEW

▼ BACK DOOR ROOF

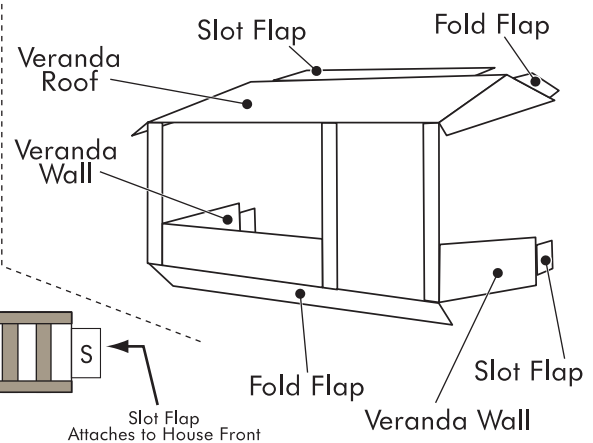


▲ KITCHEN

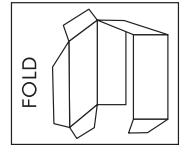
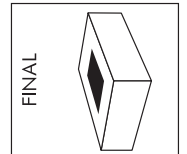
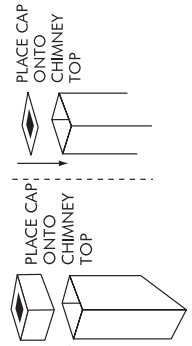
ERIC HOTZ © 2003



VERANDA ROOF & SUPPORTS (Attaches to House Front)



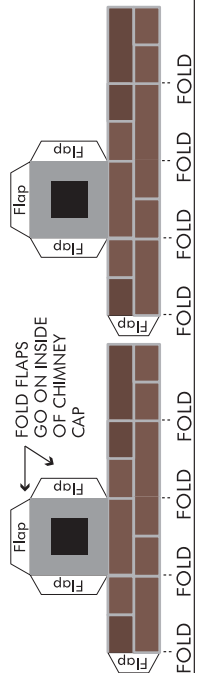
TWO METHODS



PERMISSION TO PHOTOCOPY FOR PERSONAL USE

NOTE: THESE MAKE TWO CHIMNEY CAPS

CHIMNEY CAPS

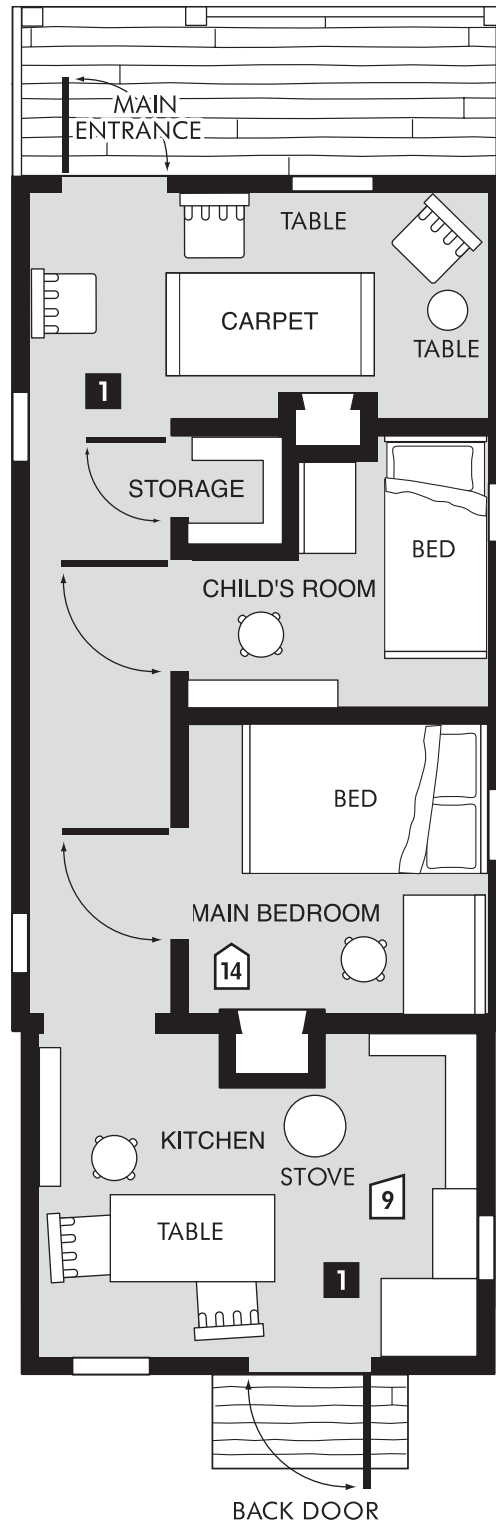


PRODUCT #2524

FLOOR PLANS 30mm scale

PAPER PLACES

NOTE: For best results, print onto card stock

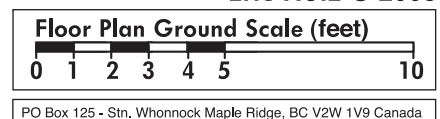


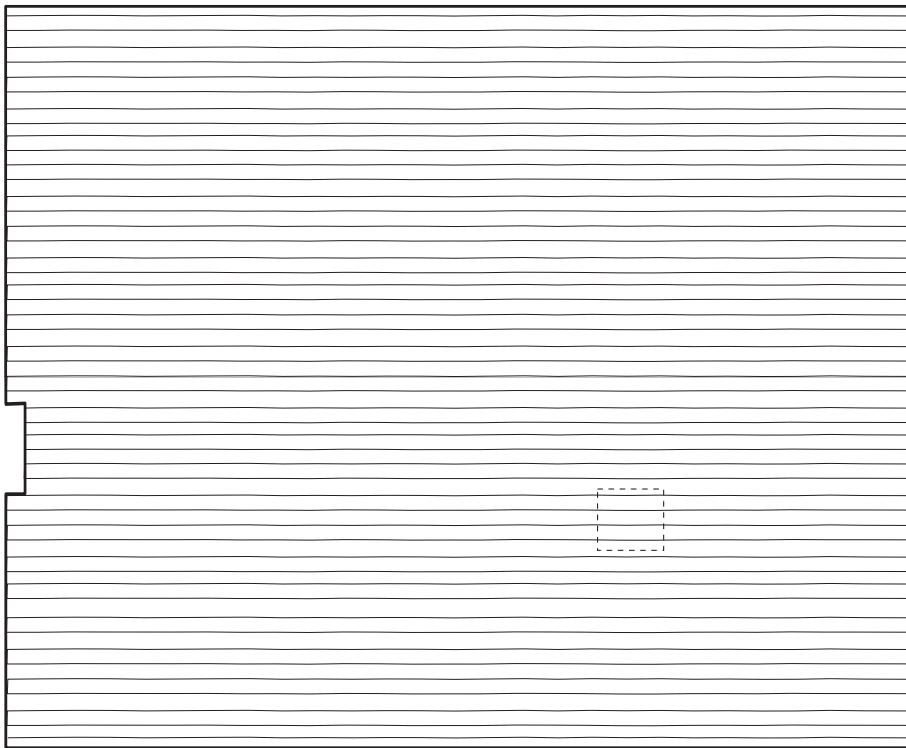
PERMISSION TO PHOTOCOPY FOR PERSONAL USE

WWW.ERICHOTZ.COM/WHITEWASH.HTML

PRODUCT #2524

Eric Hotz © 2003

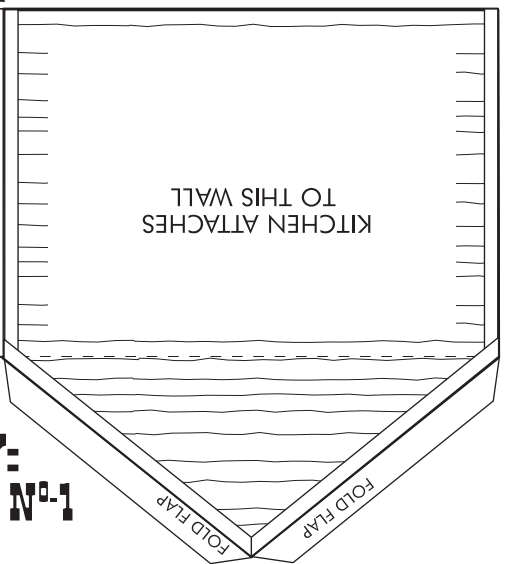
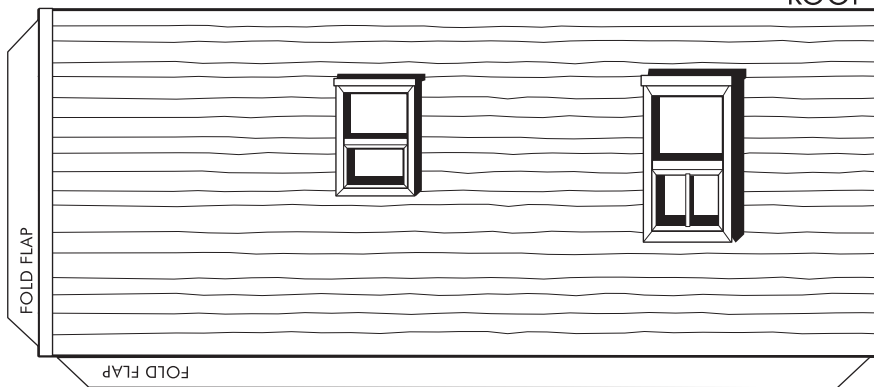
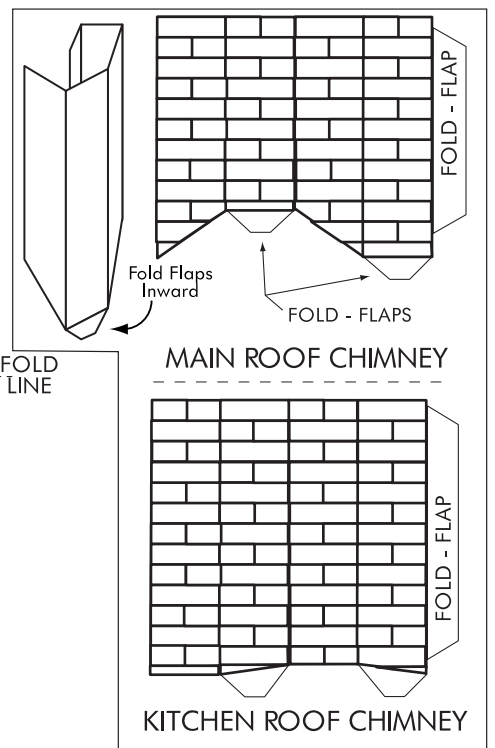




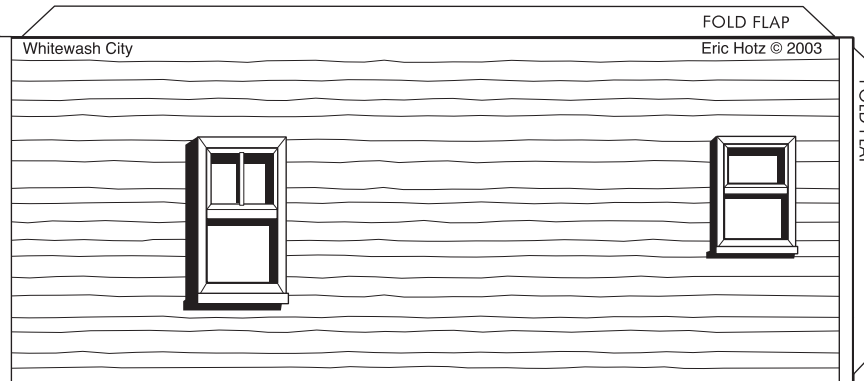
FOLD LINE

FRONT

ROOF ▲



WHITEWASH CITY: RESIDENTIAL HOUSE N°1



NOTE: This house design was common in mining communities. Its likely that there would be several houses built in this style within the same community

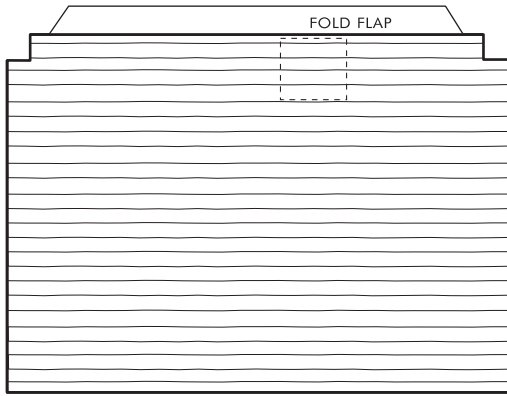
PRODUCT #2524

ERIC HOTZ © 2003

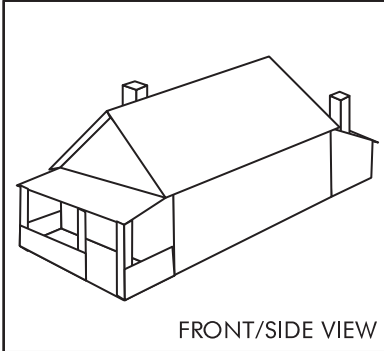
PERMISSION TO PHOTOCOPY FOR PERSONAL USE

WHITEWASH CITY: RESIDENTIAL HOUSE N°-1

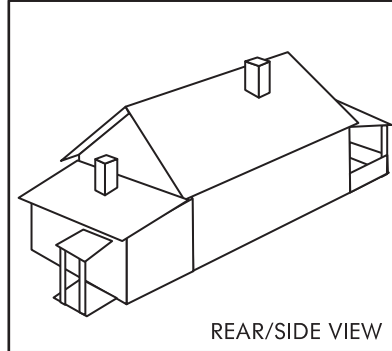
*Typical Residential Home
as it appeared at the mining town
of Anaconda,
British Columbia, Canada*



▲ KITCHEN ROOF

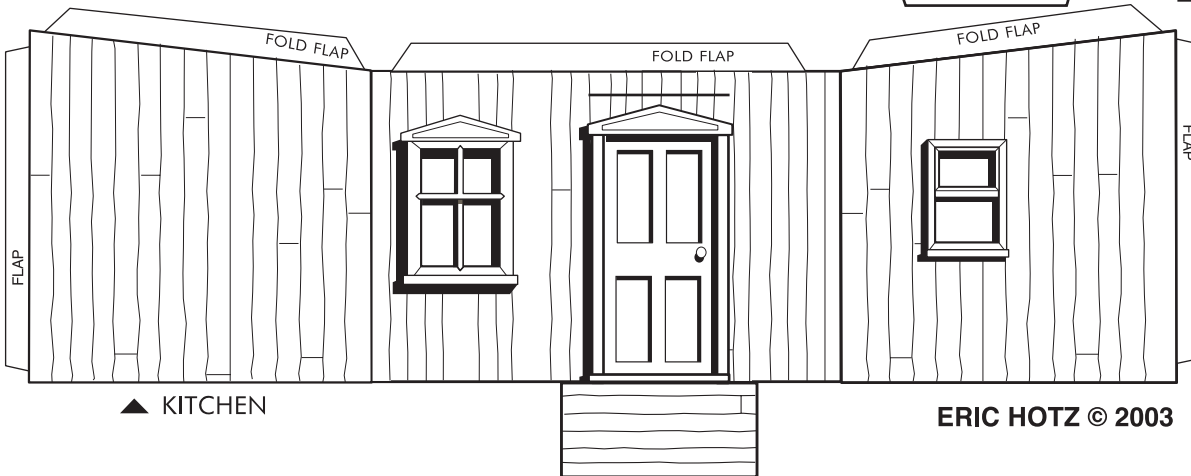
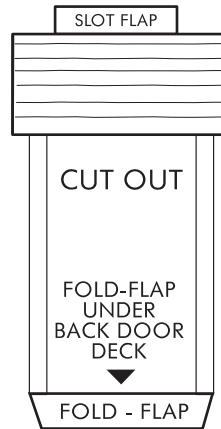


FRONT/SIDE VIEW



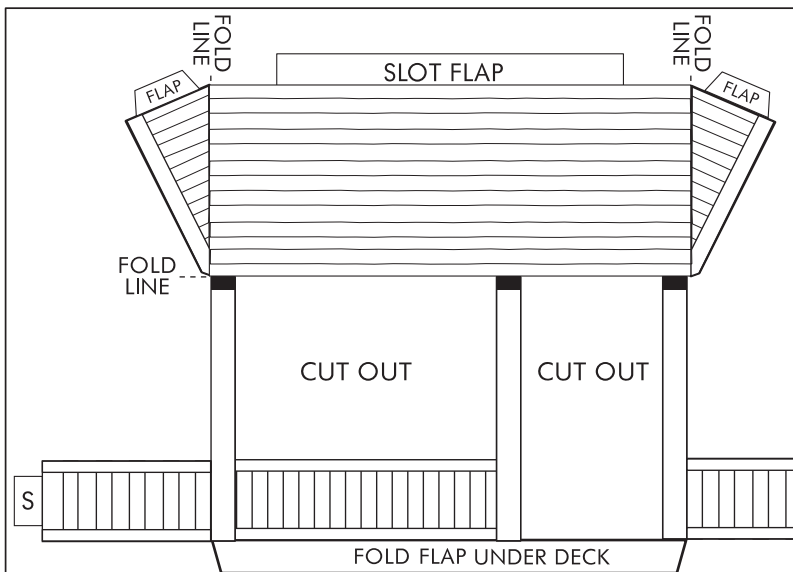
REAR/SIDE VIEW

▼ BACK DOOR ROOF

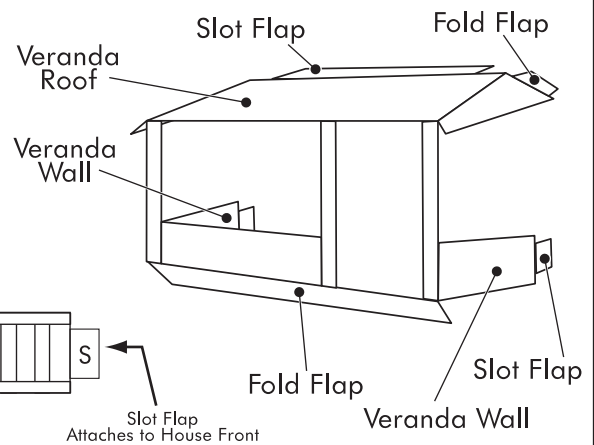


▲ KITCHEN

ERIC HOTZ © 2003



VERANDA ROOF & SUPPORTS (Attaches to House Front)

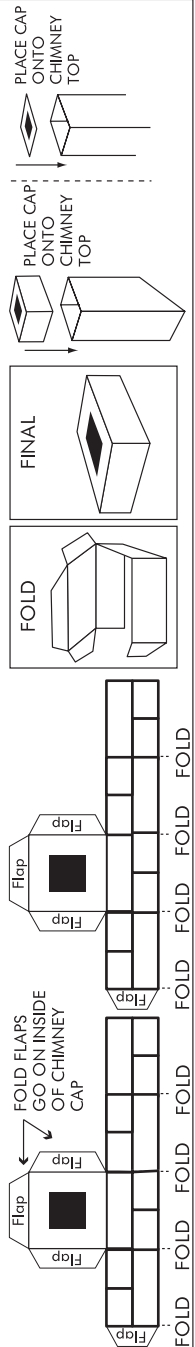


PRODUCT #2524

PERMISSION TO PHOTOCOPY FOR PERSONAL USE

NOTE: THESE MAKE TWO CHIMNEY CAPS

TWO METHODS



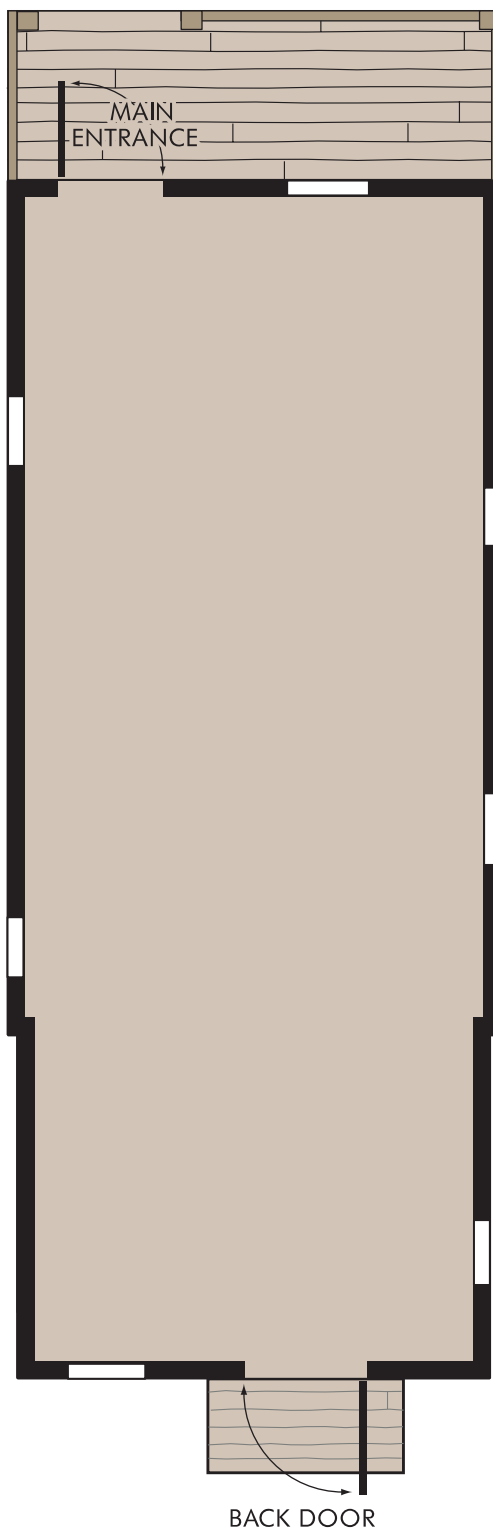
FLOOR PLANS 30mm scale

NOTE: For best results, print onto card stock

PAPER PLACES

CREATE YOUR OWN INTERIORS

Draw in your own interior
furnishings, walls, doors, etc.



Eric Hotz © 2003

Floor Plan Ground Scale (feet)

0 1 2 3 4 5 10

PO Box 125 - Stn. Whonnock Maple Ridge, BC V2W 1V9 Canada

PRODUCT #2524

WWW.ERICHOTZ.COM/WHITEWASH.HTML

PERMISSION TO PHOTOCOPY FOR PERSONAL USE

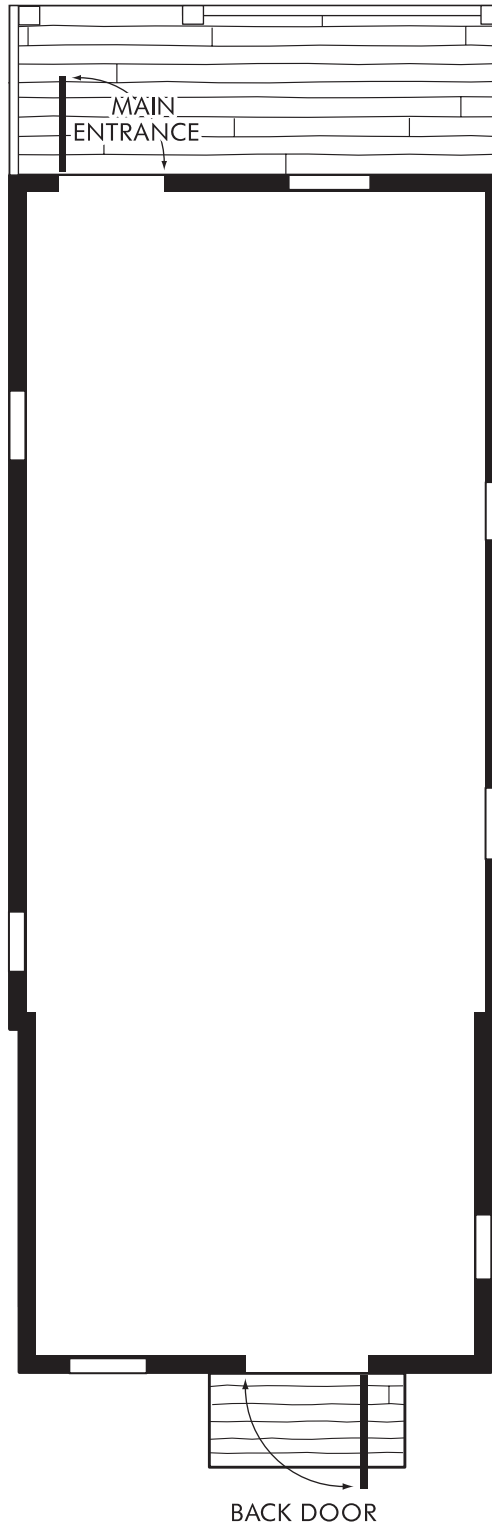
FLOOR PLANS 30mm scale

NOTE: For best results, print onto card stock

PAPER PLACES

CREATE YOUR OWN INTERIORS

Draw in your own interior
furnishings, walls, doors, etc.



Eric Hotz © 2003

Floor Plan Ground Scale (feet)

0 1 2 3 4 5 10

PO Box 125 - Stn. Whonnock Maple Ridge, BC V2W 1V9 Canada

PRODUCT #2524

WWW.ERICHOTZ.COM/WHITEWASH.HTML

PERMISSION TO PHOTOCOPY FOR PERSONAL USE