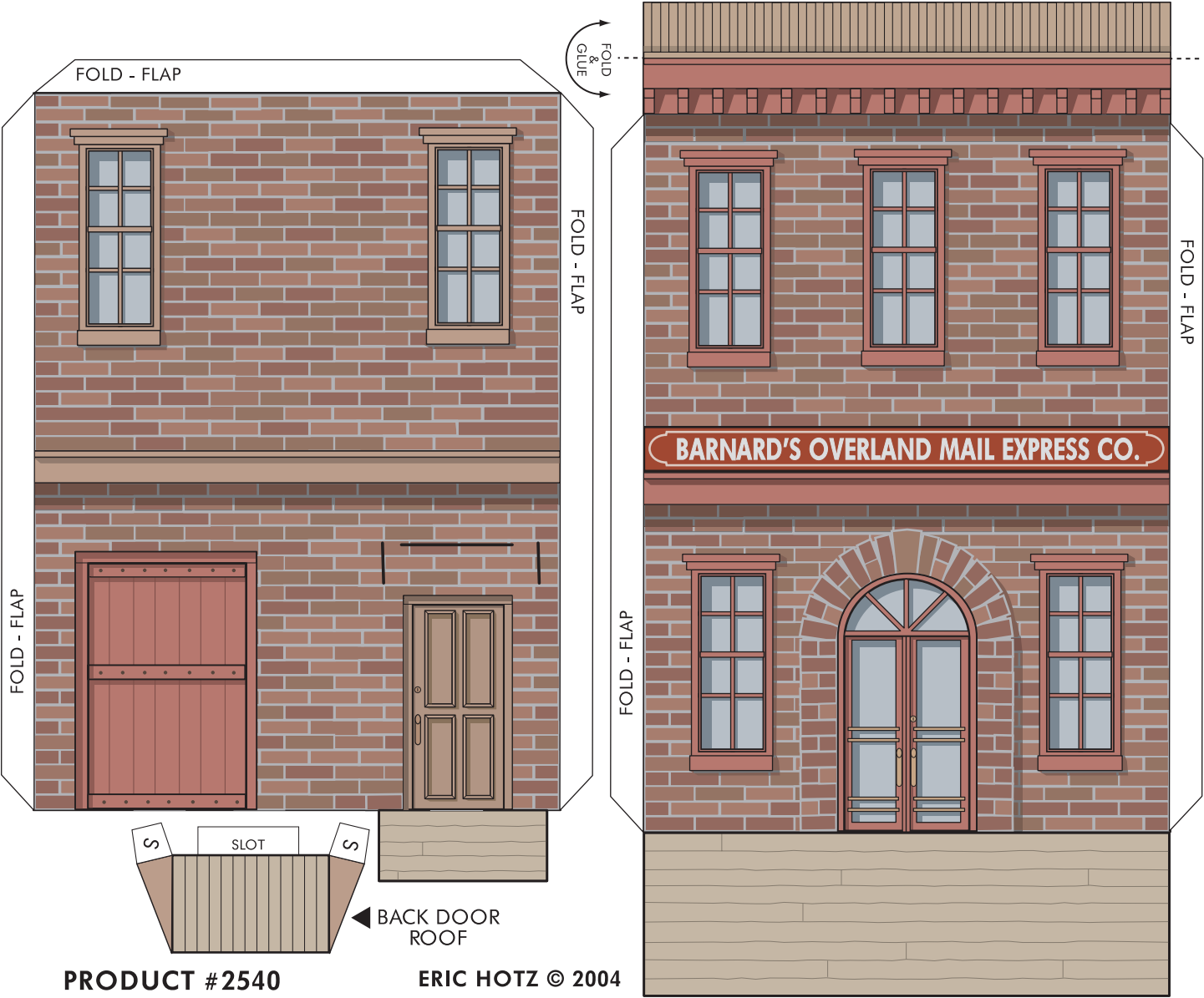
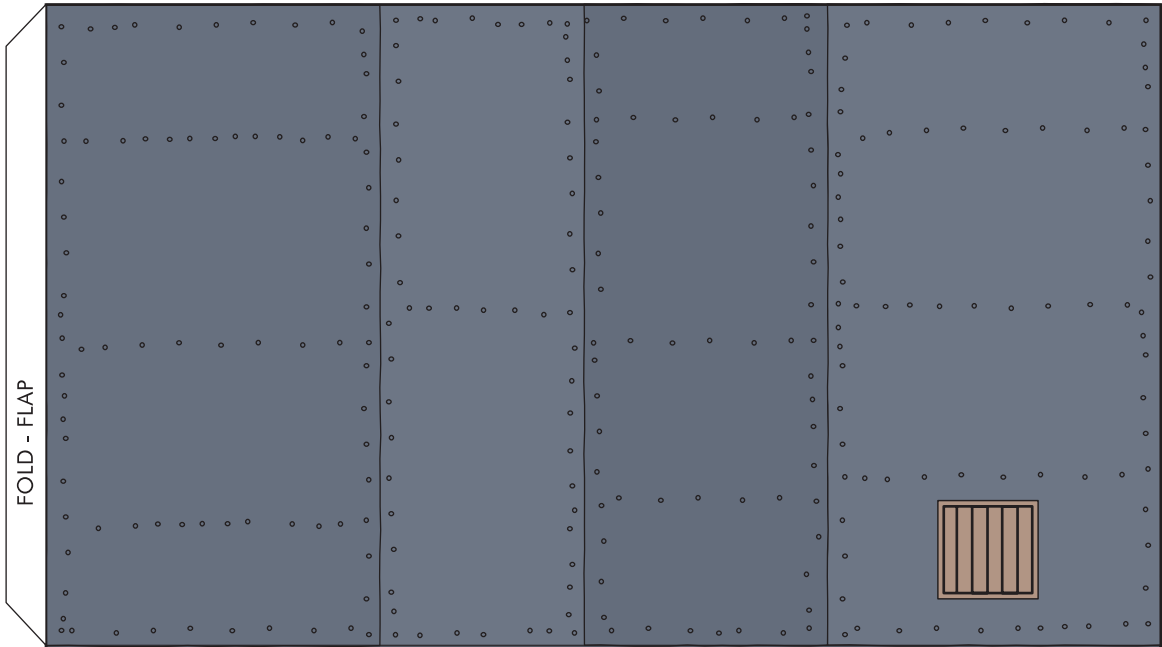


WHITEWASH CITY: STAGECOACH & EXPRESS OFFICE

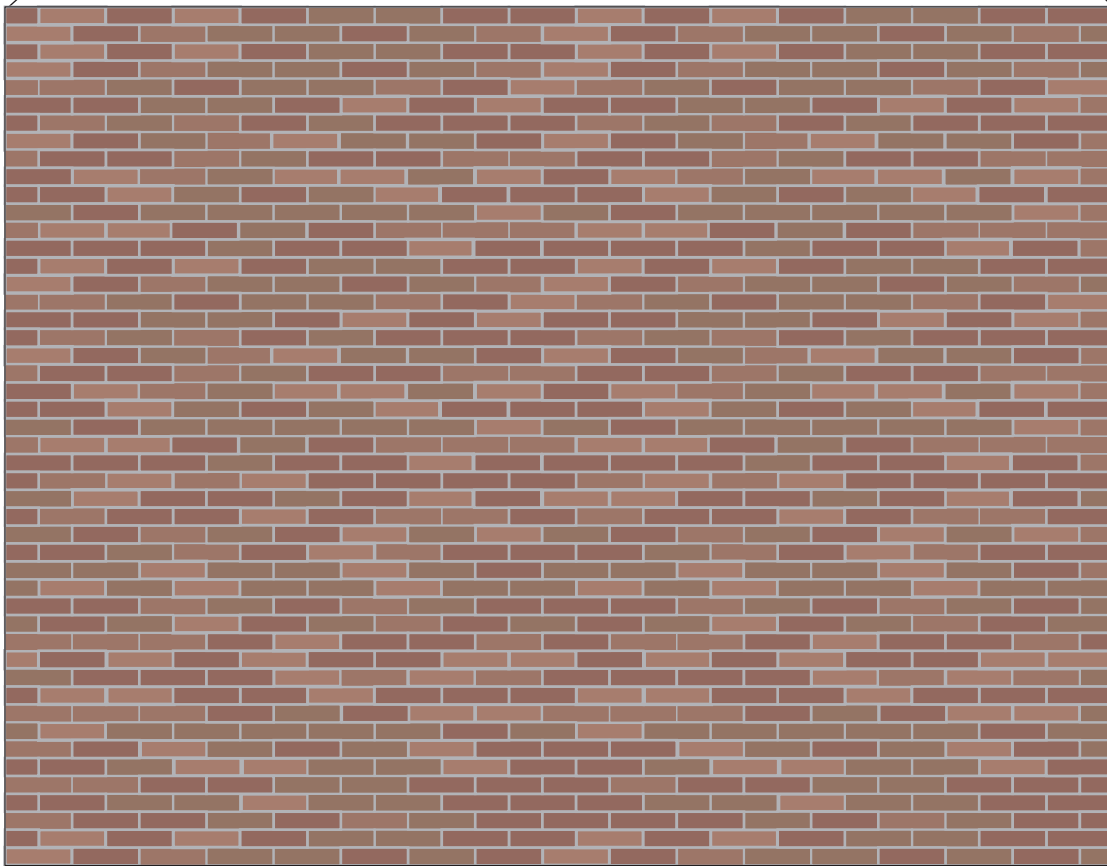


PERMISSION TO PHOTOCOPY FOR PERSONAL USE

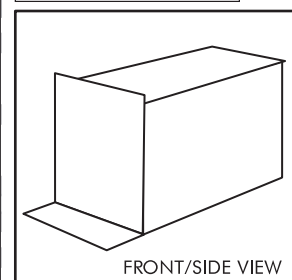
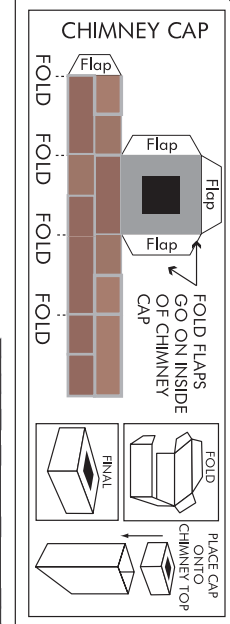
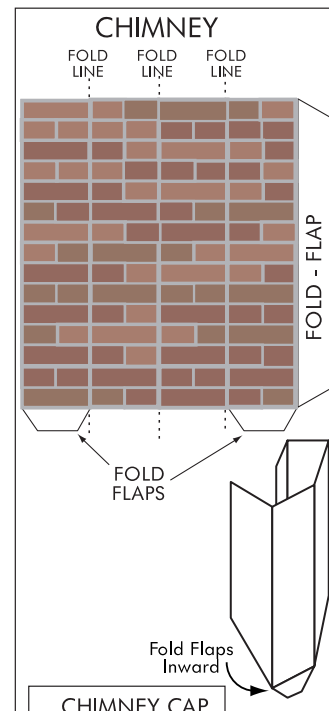
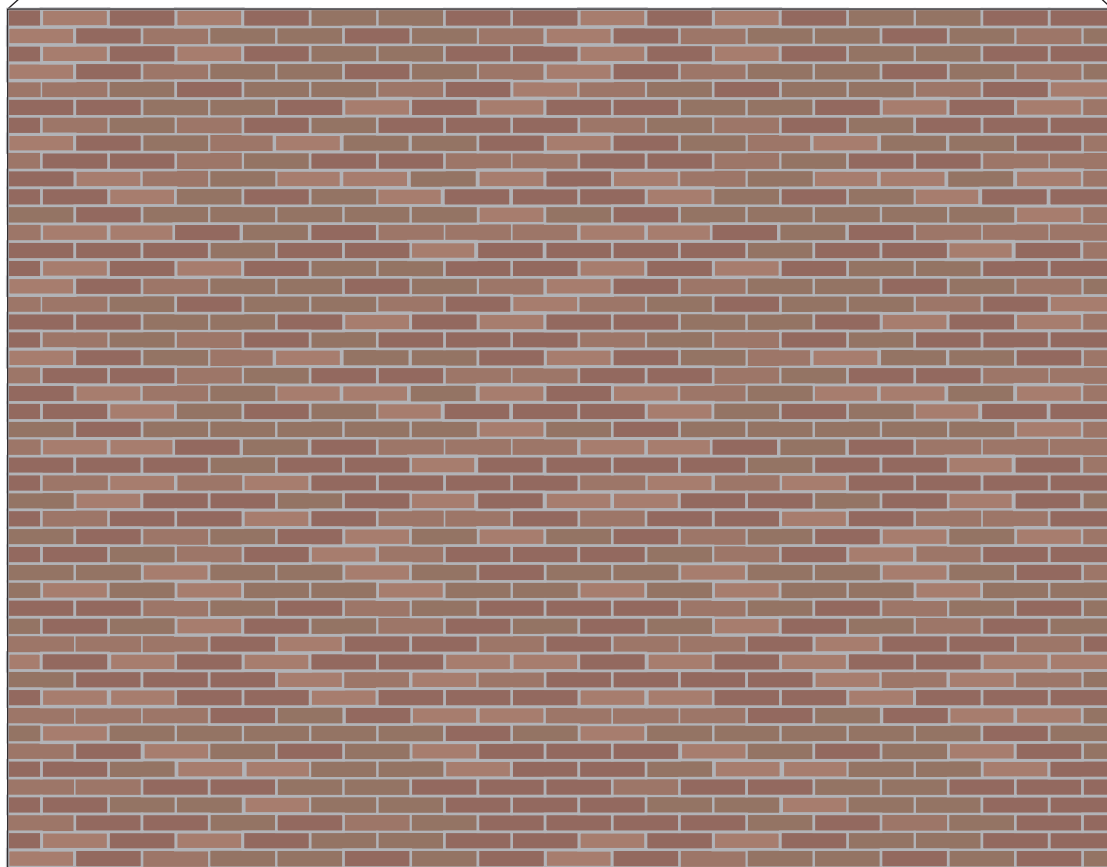


WHITEWASH CITY: STAGECOACH & EXPRESS OFFICE

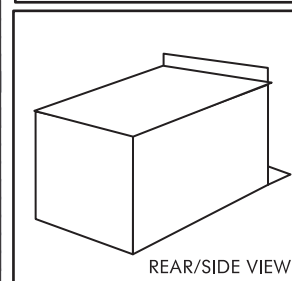
FOLD - FLAP



FOLD - FLAP



FRONT/SIDE VIEW



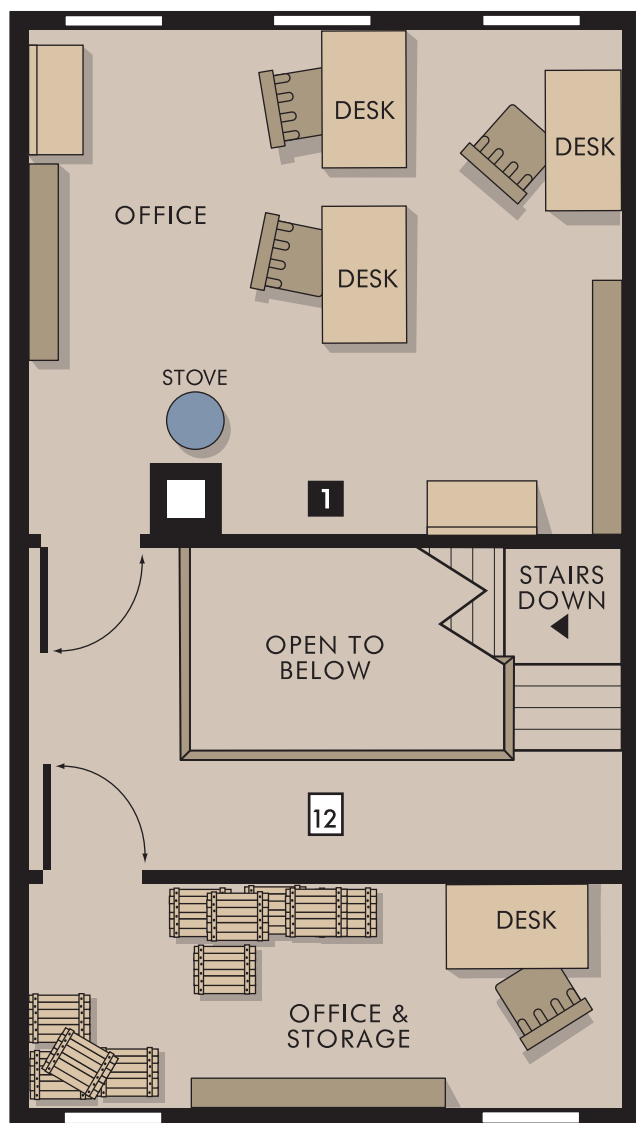
REAR/SIDE VIEW

FLOOR PLANS 30mm scale

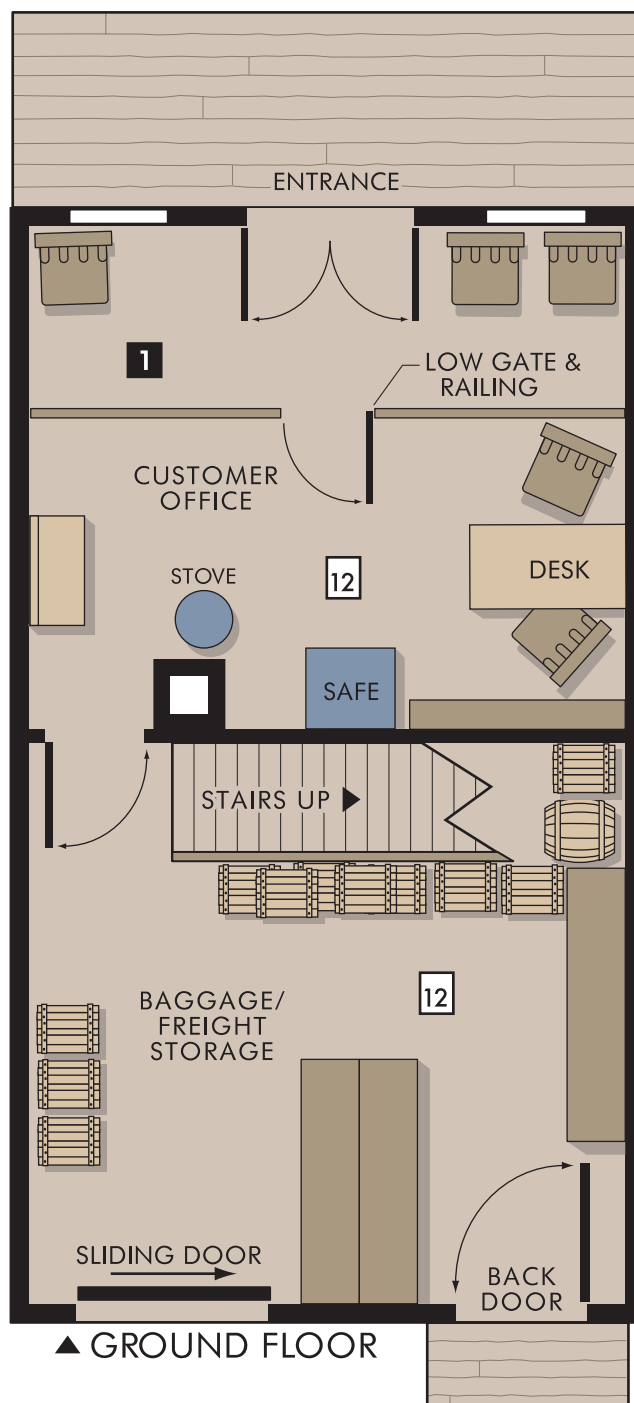
PAPER PLACES

NOTE: For best results, print onto card stock

WHITEWASH CITY: STAGECOACH & EXPRESS OFFICE



▲ SECOND FLOOR



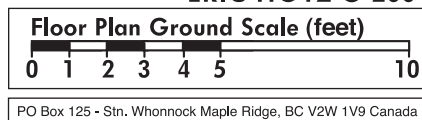
▲ GROUND FLOOR

PERMISSION TO PHOTOCOPY FOR PERSONAL USE

WWW.ERICHOTZ.COM/WHITEWASH.HTML

PRODUCT #2540

ERIC HOTZ © 2004

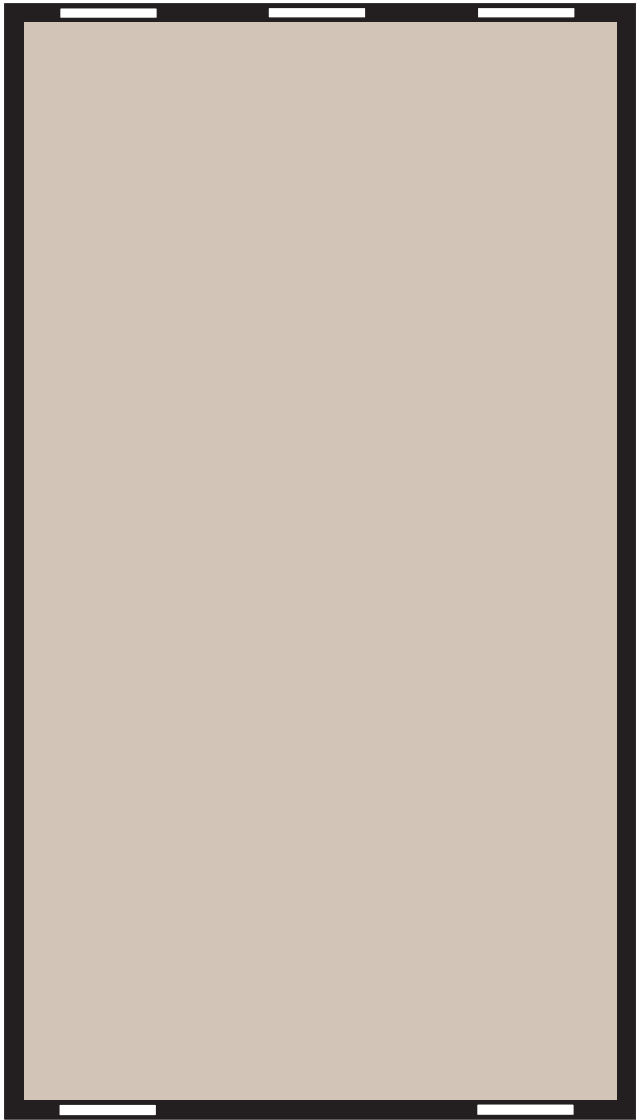


FLOOR PLANS 30mm scale

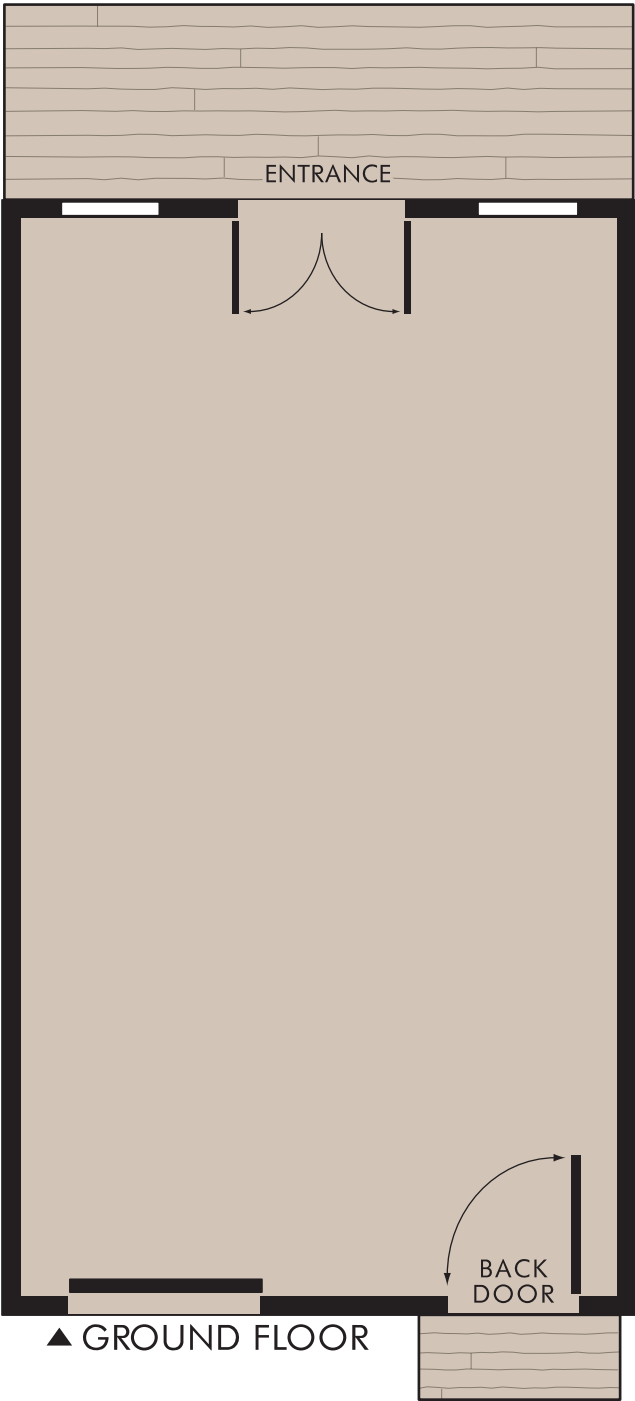
NOTE: For best results, print onto card stock

PAPER PLACES

WHITEWASH CITY: STAGECOAGE & EXPRESS OFFICE



▲ SECOND FLOOR

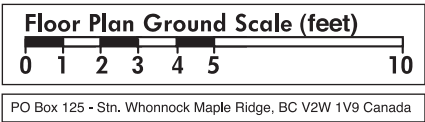


▲ GROUND FLOOR

CREATE YOUR OWN INTERIORS

Draw in your own
interior furnishings,
walls, doors, etc.

ERIC HOTZ © 2004

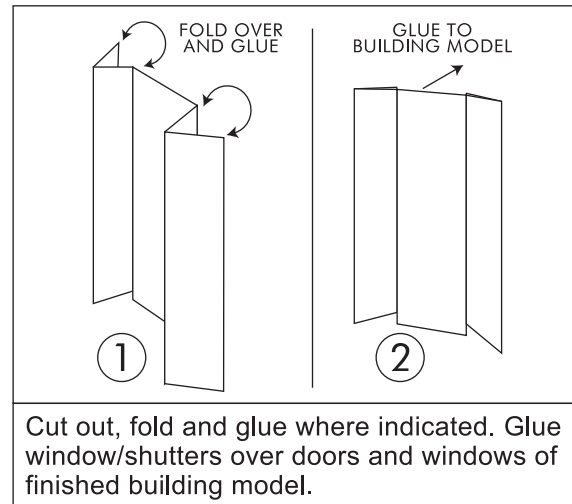
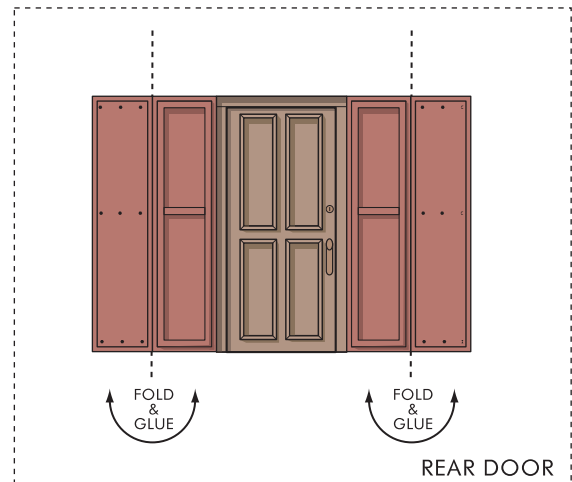
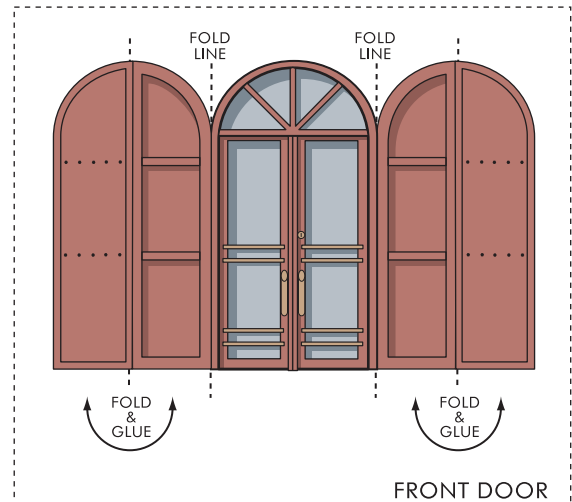
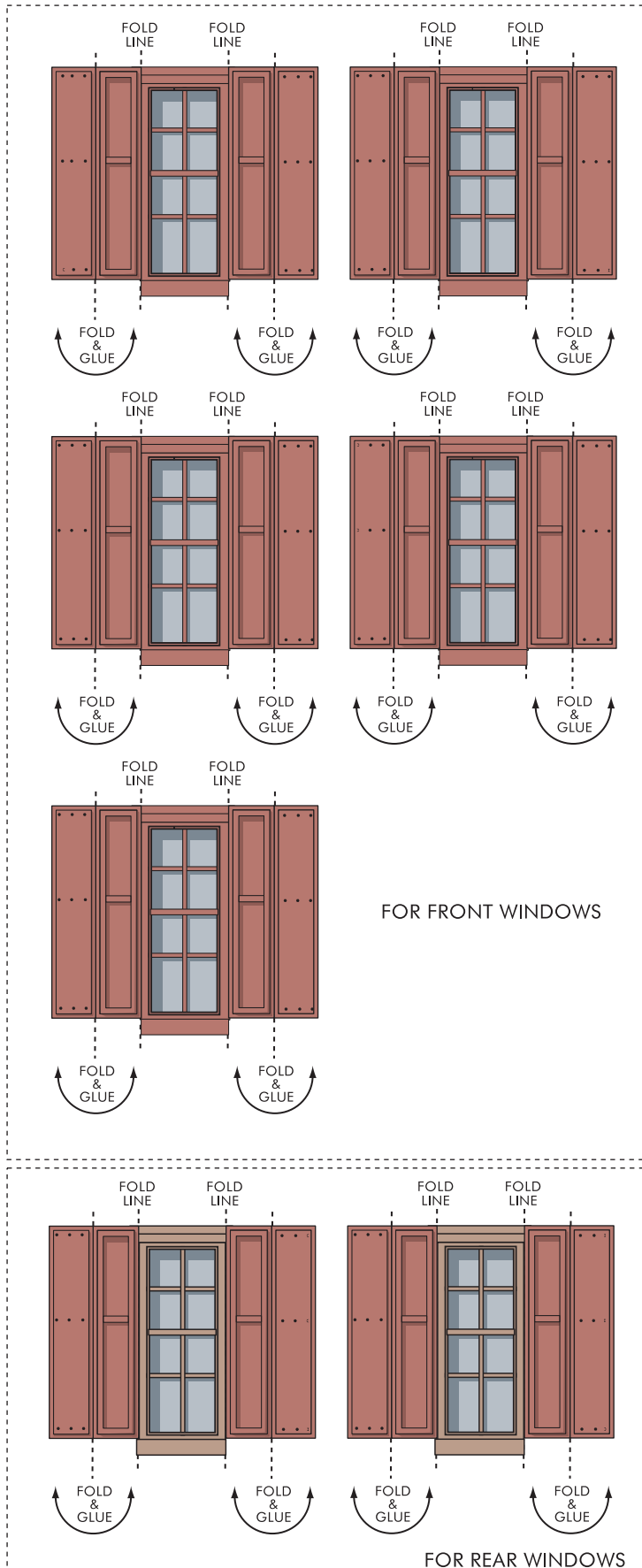


PERMISSION TO PHOTOCOPY FOR PERSONAL USE

WWW.ERICHOTZ.COM/WHITEWASH.HTML

PRODUCT #2540

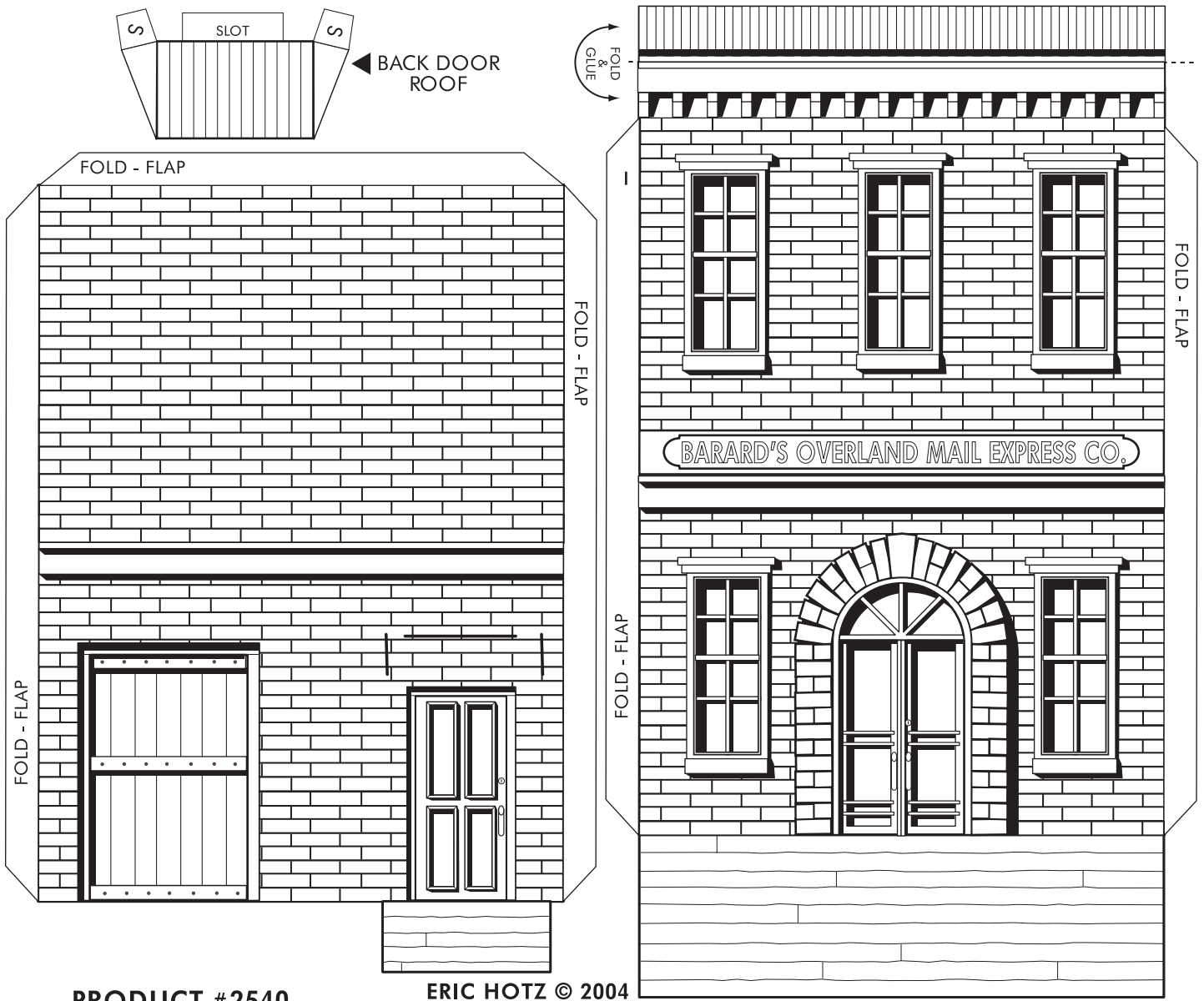
IRON SHUTTERS (OPTIONAL)



Iron Shutters

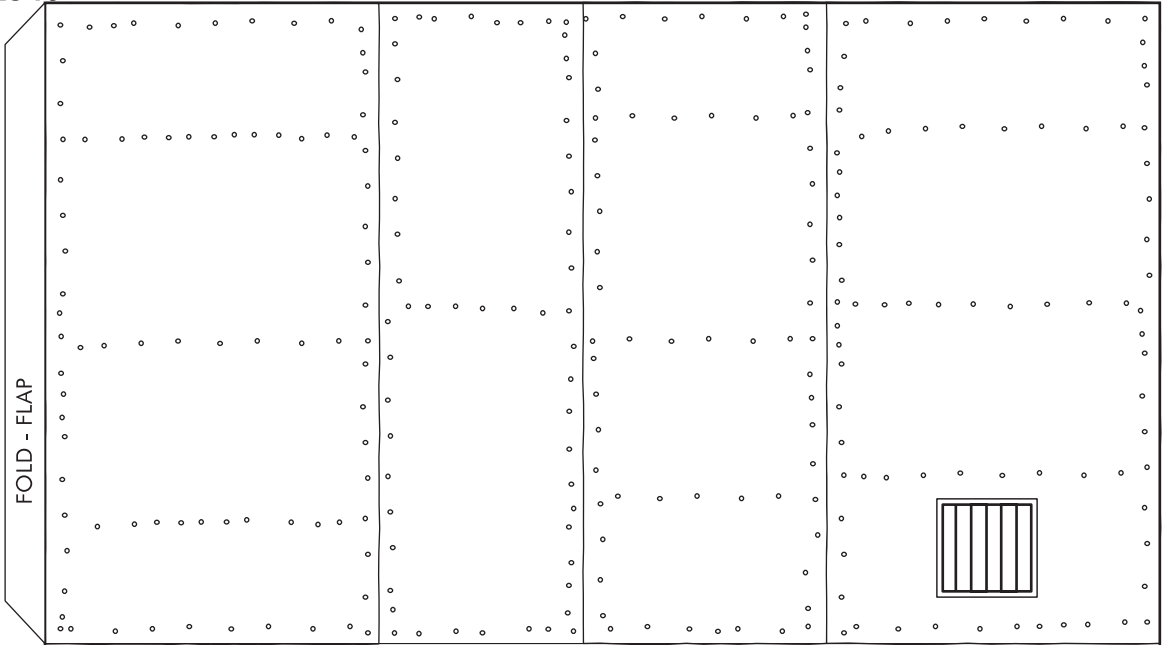
Iron shutters were used on many brick and stone buildings during this period. Although shutters could be shut and locked, thus deterring theft, they were mainly used to protect against fire. It was thought that brick and stone buildings were fire proof and iron shutters would prevent the fire from entering the building through windows and doors.

WHITEWASH CITY: STAGECOACH & EXPRESS OFFICE



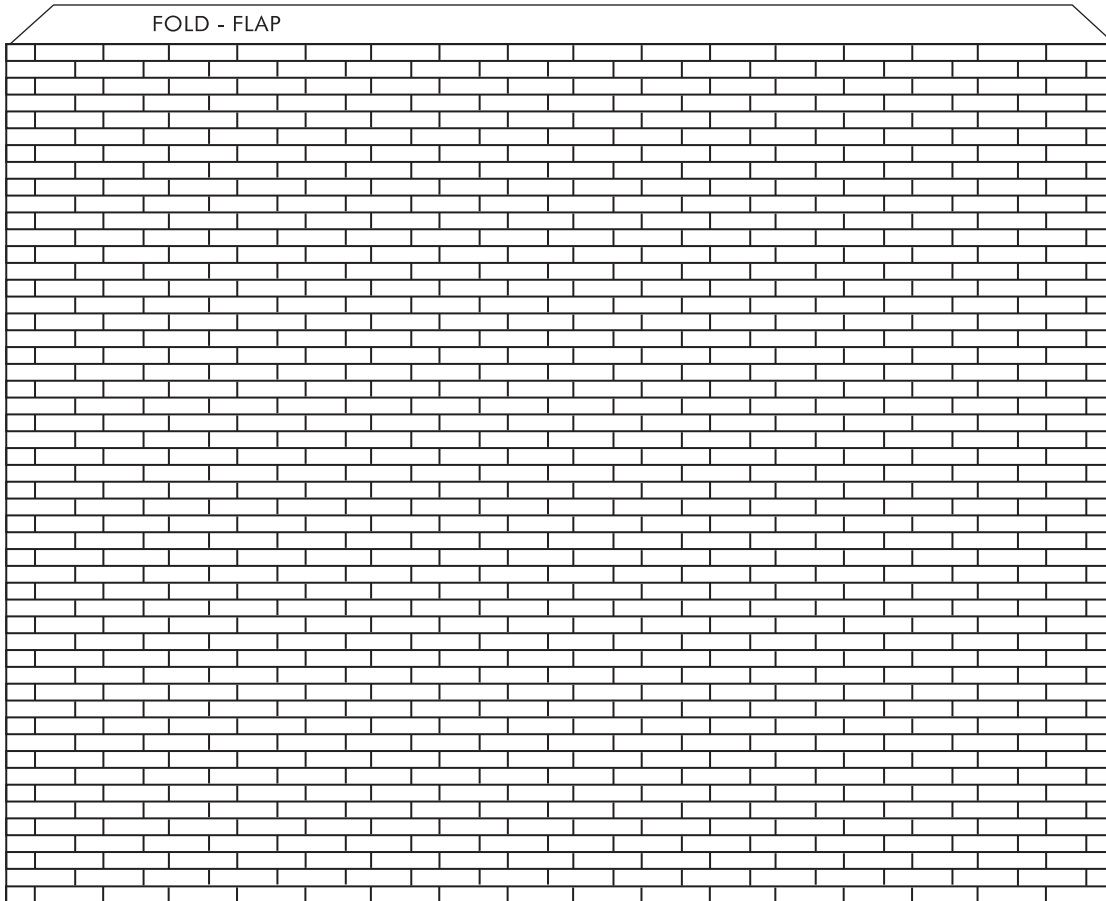
PRODUCT #2540

ERIC HOTZ © 2004

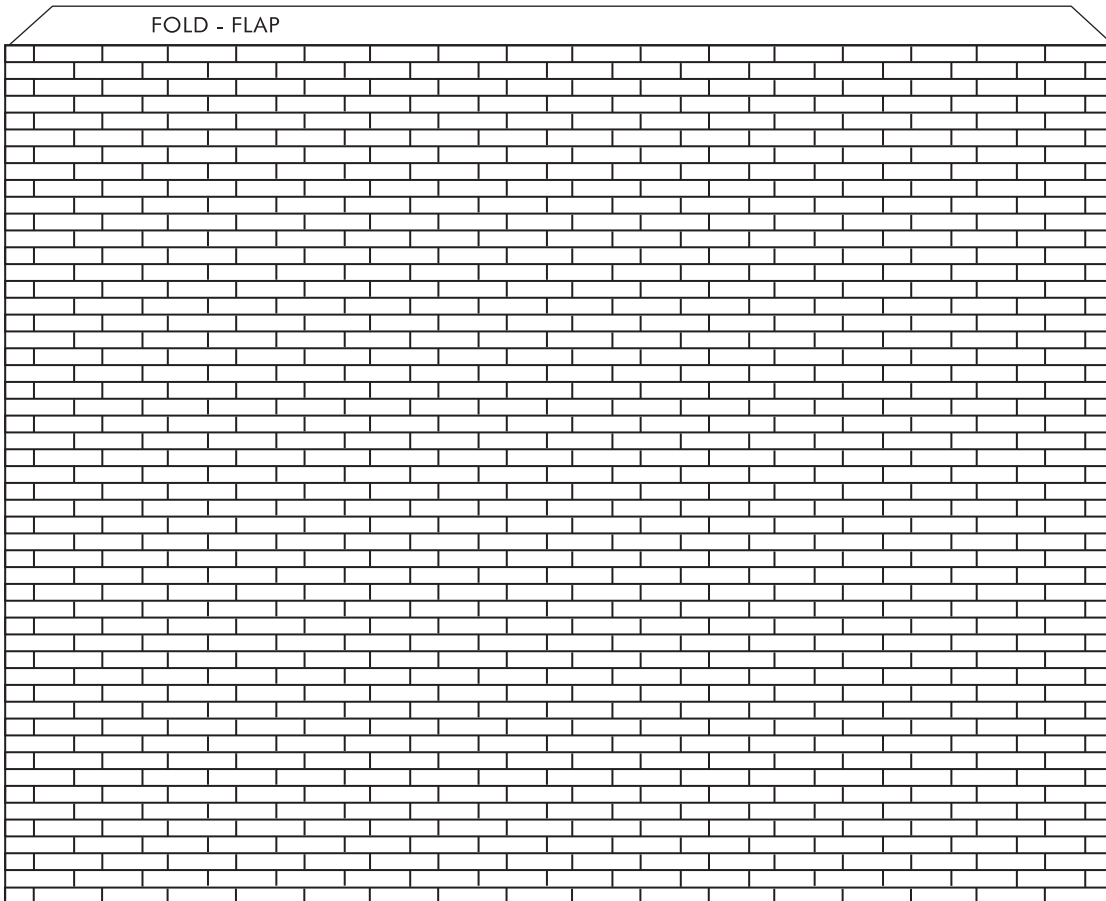


WHITEWASH CITY: STAGECOACH & EXPRESS OFFICE

FOLD - FLAP

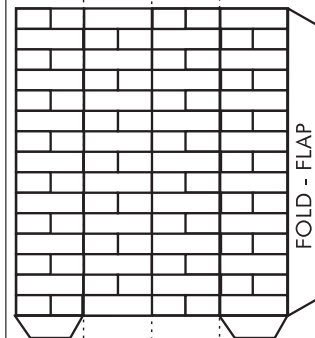


FOLD - FLAP



CHIMNEY

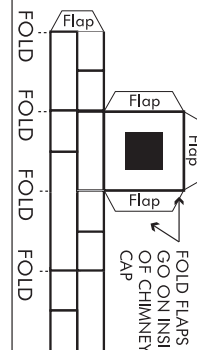
FOLD LINE FOLD LINE FOLD LINE



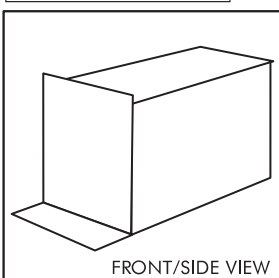
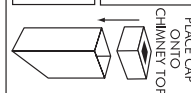
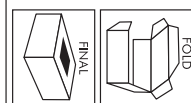
FOLD FLAPS

Fold Flaps Inward

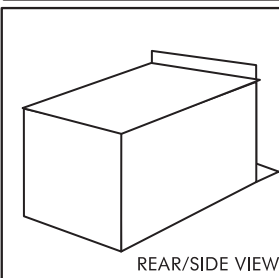
CHIMNEY CAP



FOLD FLAPS GO ON INSIDE OF CHIMNEY CAP



FRONT/SIDE VIEW



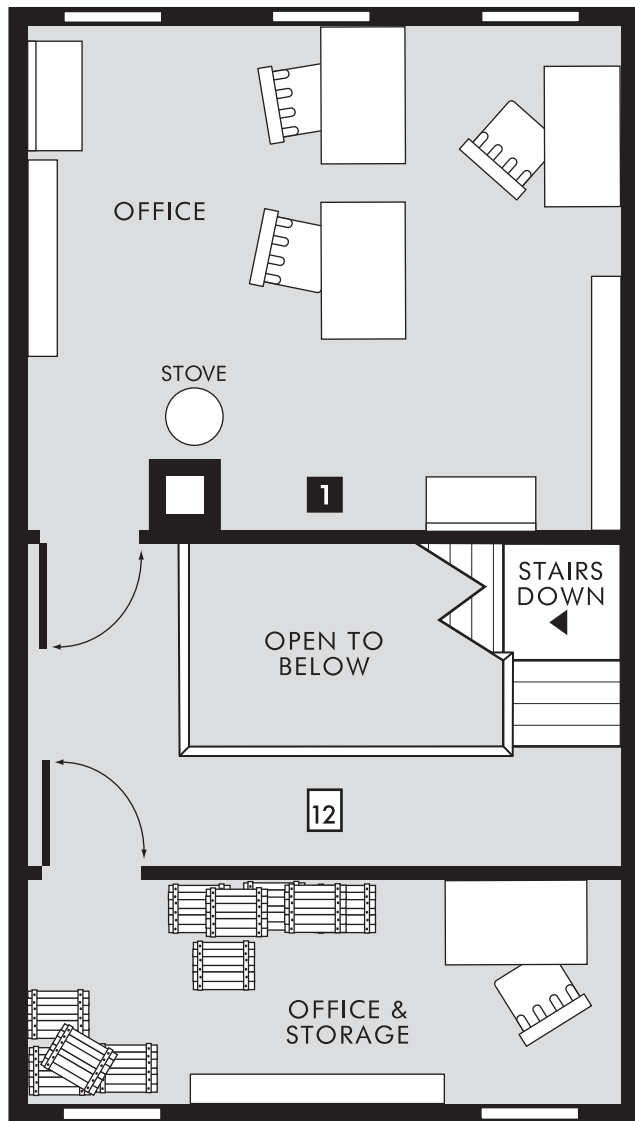
REAR/SIDE VIEW

FLOOR PLANS 30mm scale

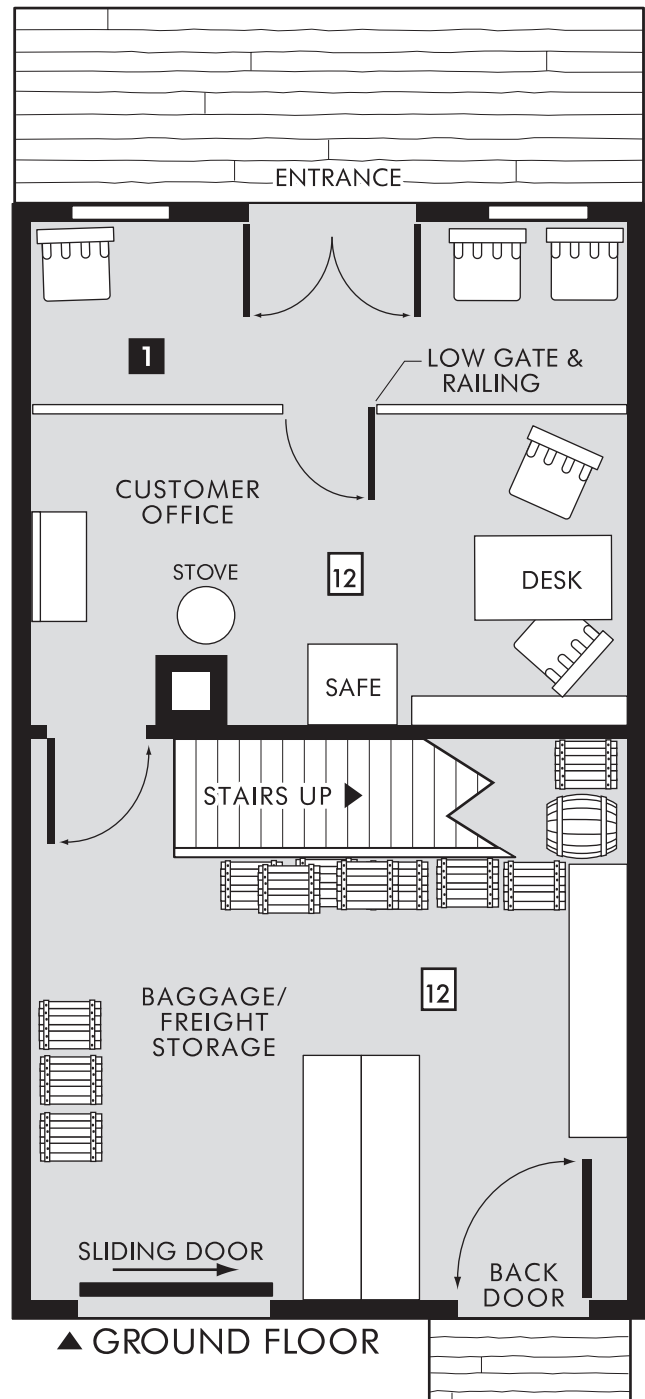
PAPER PLACES

NOTE: For best results, print onto card stock

WHITEWASH CITY: STAGECOACH & EXPRESS OFFICE



▲ SECOND FLOOR



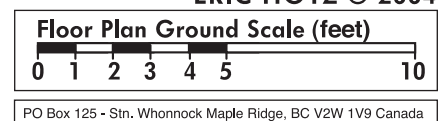
▲ GROUND FLOOR

PERMISSION TO PHOTOCOPY FOR PERSONAL USE

WWW.ERICHOTZ.COM/WHITEWASH.HTML

PRODUCT #2540

ERIC HOTZ © 2004

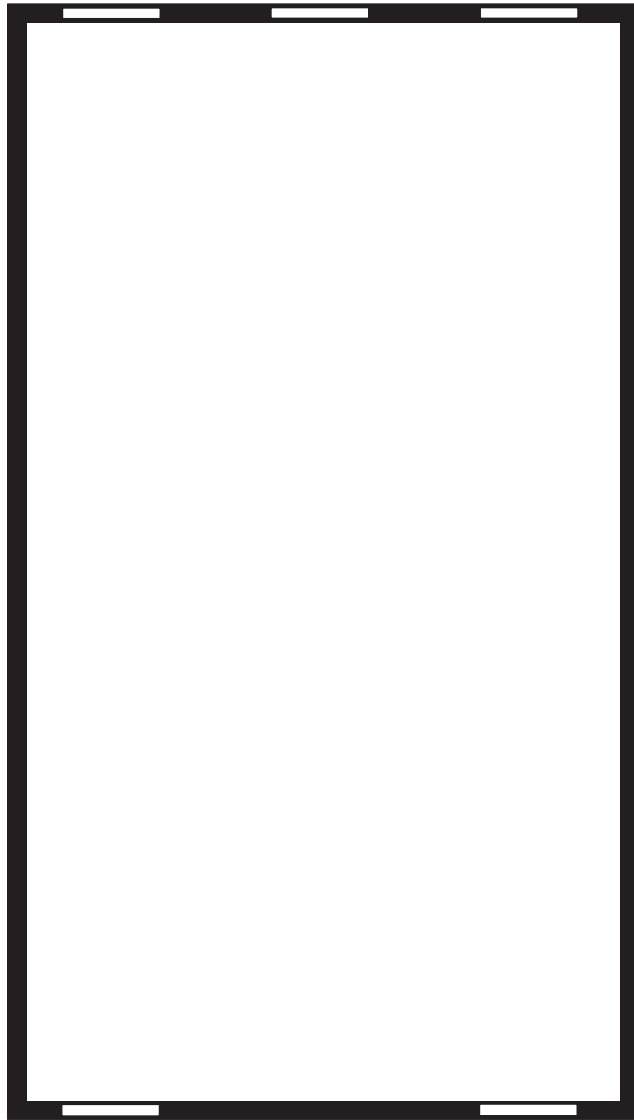


FLOOR PLANS 30mm scale

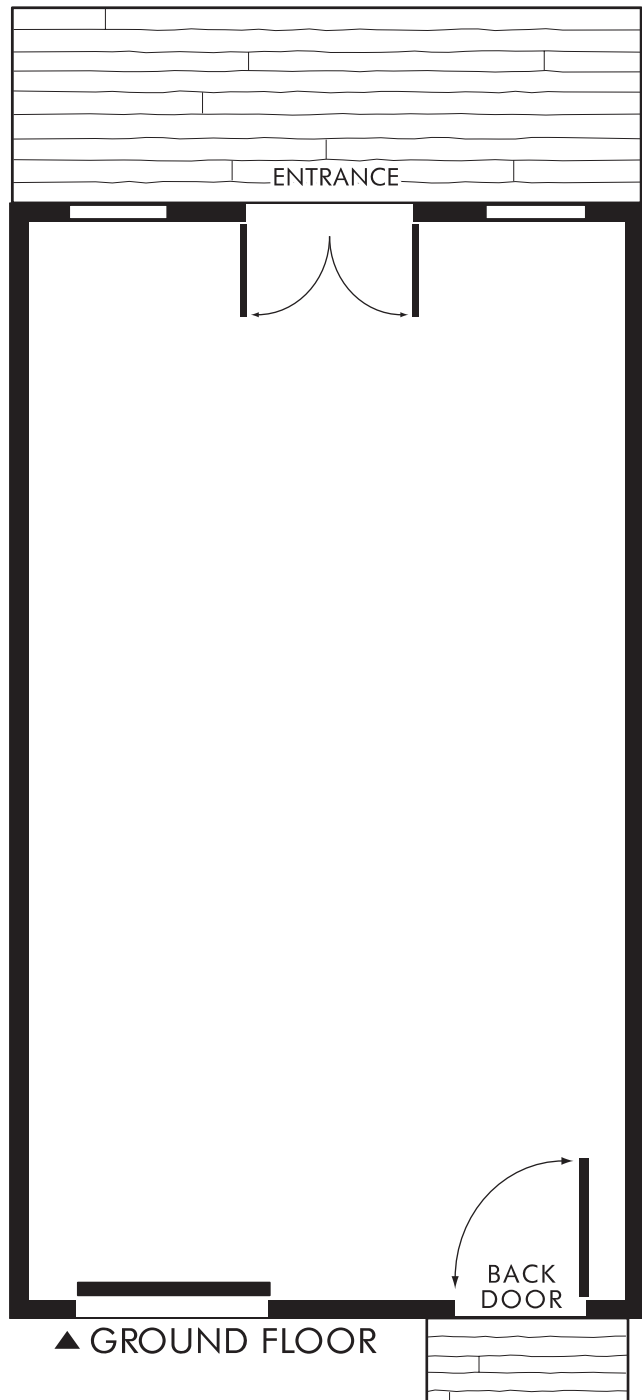
PAPER PLACES

NOTE: For best results, print onto card stock

WHITEWASH CITY: STAGECOACH & EXPRESS OFFICE



▲ SECOND FLOOR



▲ GROUND FLOOR

CREATE YOUR OWN INTERIORS

Draw in your own
interior furnishings,
walls, doors, etc.

ERIC HOTZ © 2004



PO Box 125 - Stn. Whonnock Maple Ridge, BC V2W 1V9 Canada

PERMISSION TO PHOTOCOPY FOR PERSONAL USE

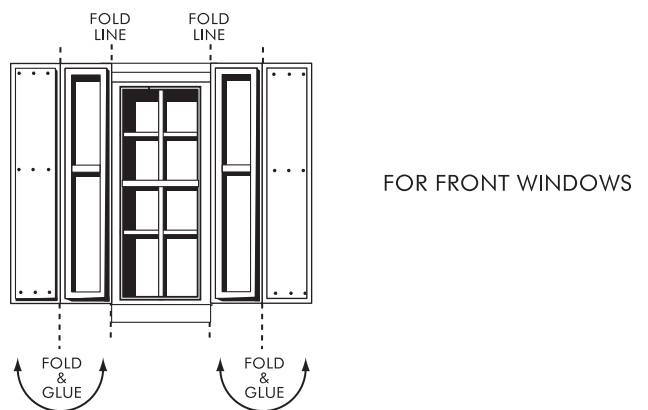
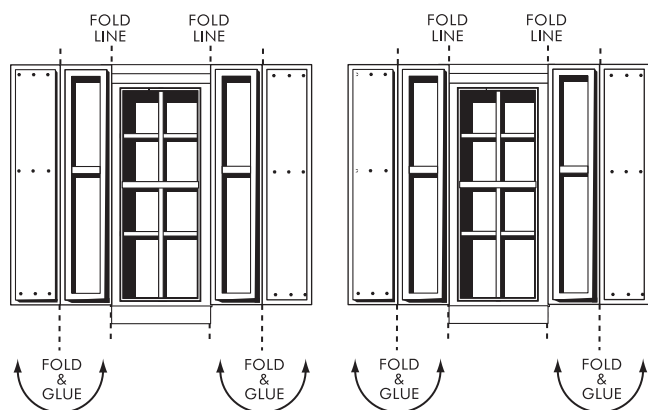
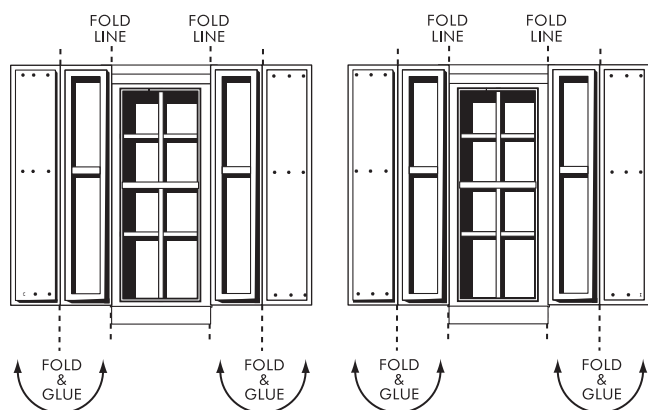
WWW.ERICHOTZ.COM/WHITEWASH.HTML

PRODUCT #2540

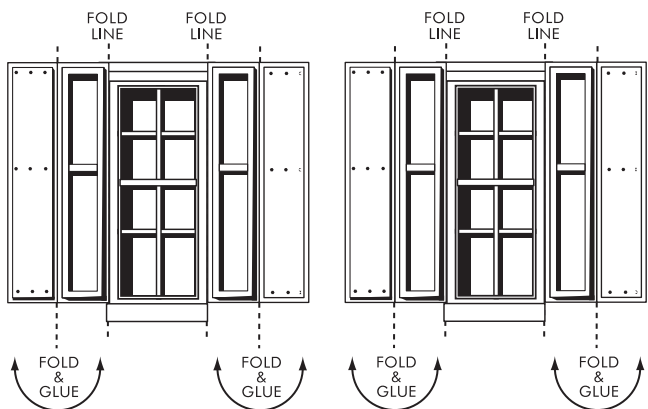
WHITEWASH CITY: STAGECOACH & EXPRESS OFFICE

NOTE: It may be sufficient to use paper rather than card-stock for Shutters

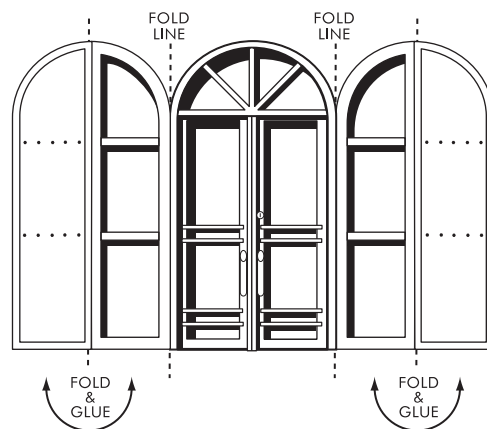
IRON SHUTTERS (OPTIONAL)



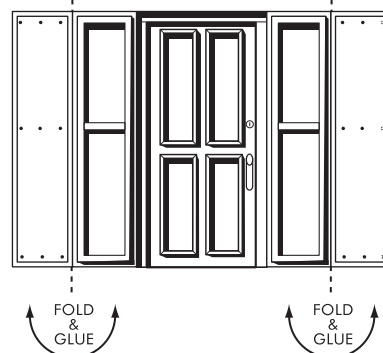
FOR FRONT WINDOWS



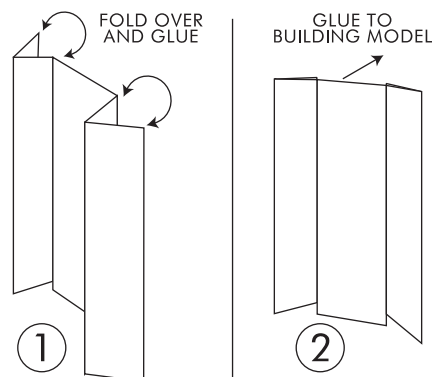
FOR REAR WINDOWS



FRONT DOOR



REAR DOOR



Cut out, fold and glue where indicated. Glue window/shutters over doors and windows of finished building model.

Iron Shutters

Iron shutters were used on many brick and stone buildings during this period. Although shutters could be shut and locked, thus deterring theft, they were mainly used to protect against fire. It was thought that brick and stone buildings were fire proof and iron shutters would prevent the fire from entering the building through windows and doors.