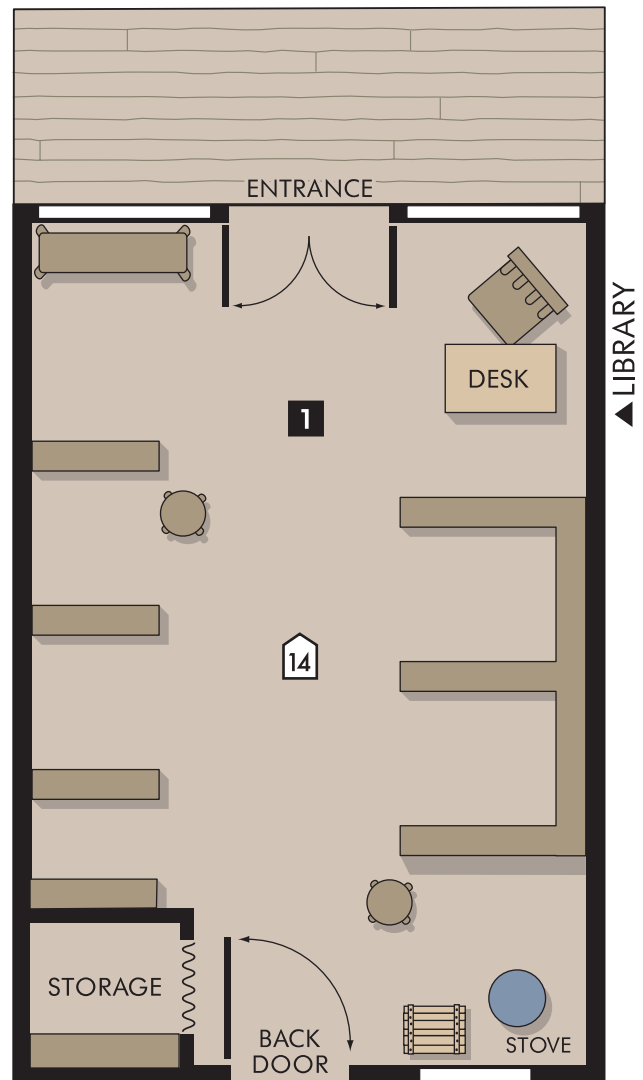
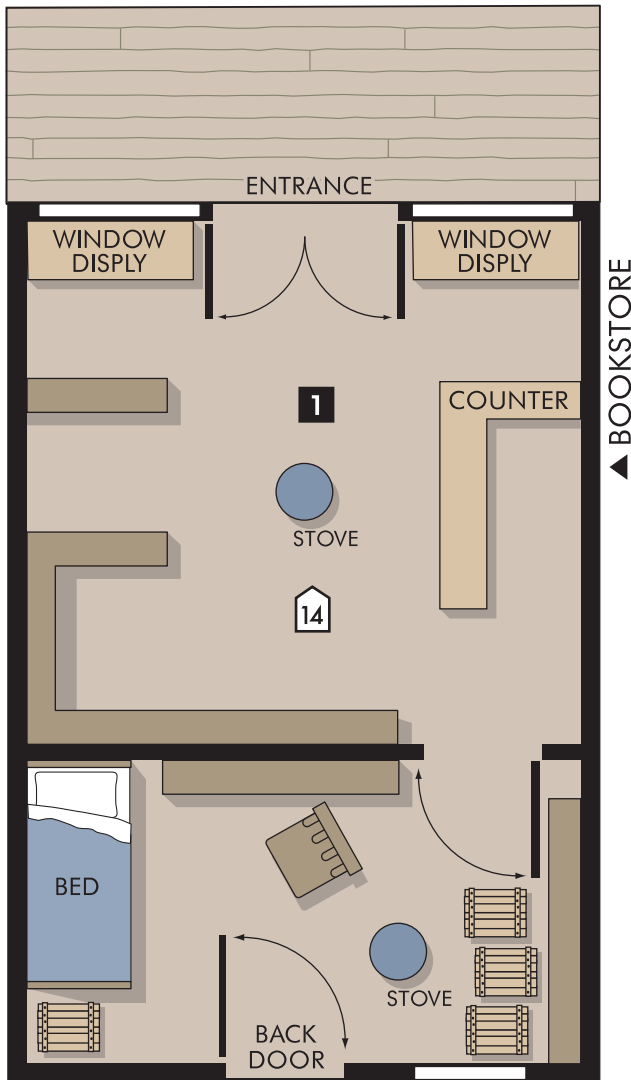


FLOOR PLANS 30mm scale

PAPER PLACES

NOTE: For best results, print onto card stock



ERIC HOTZ © 2005

PERMISSION TO PHOTOCOPY FOR PERSONAL USE

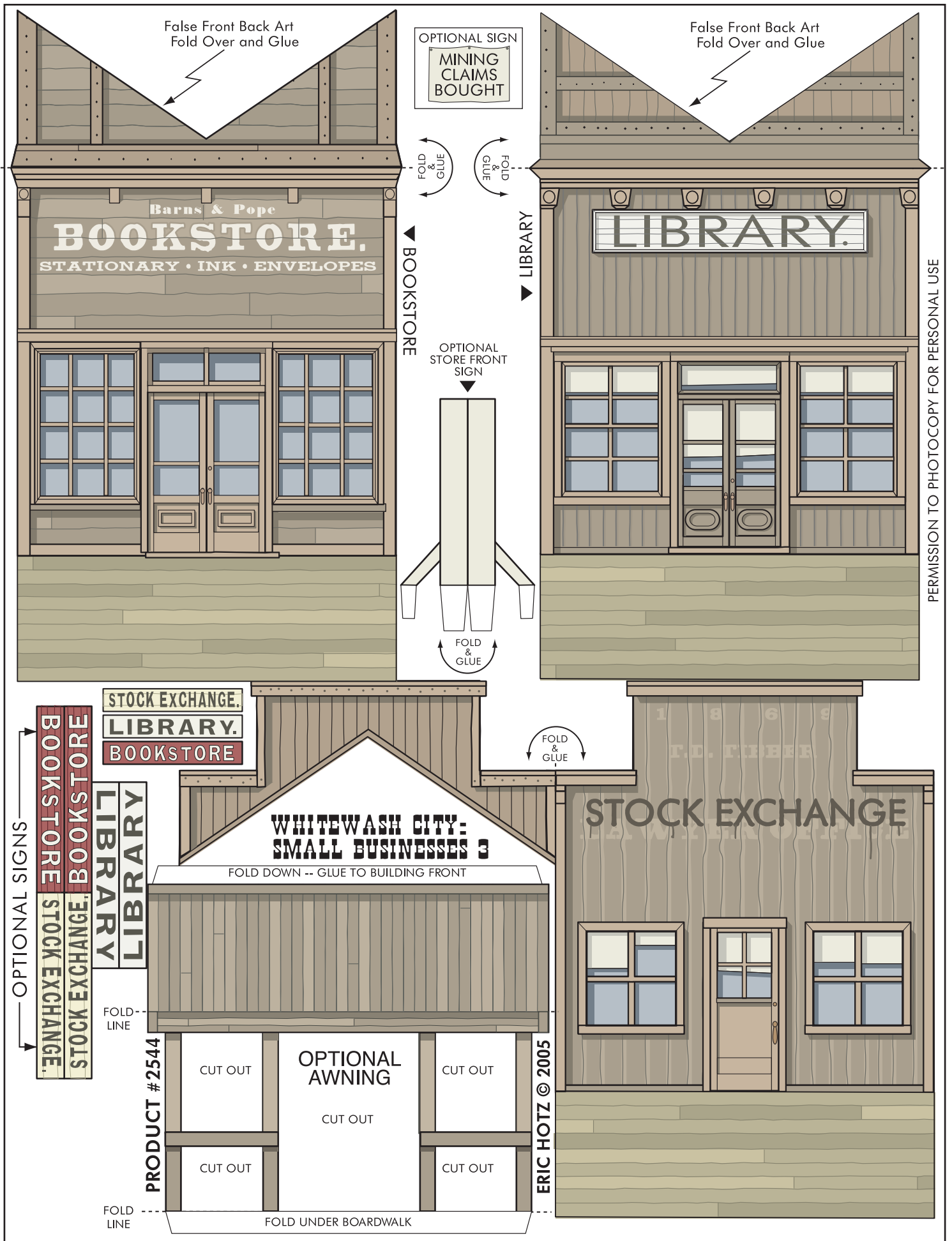
WHITEWASH CITY: SMALL BUSINESSES 3

WWW.ERICHOTZ.COM/WHITEWASH.HTML

PRODUCT #2544

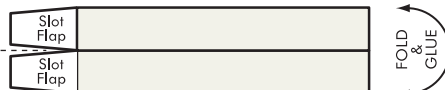


PO Box 125 - Stn. Whonnock Maple Ridge, BC V2W 1V9 Canada



NOTE: YOU WILL HAVE TO PRINT THIS PAGE OUT THREE TIMES (ONCE FOR EACH BUILDING IN THIS FILE).

FOLD



Place
Under
Wooden
Walkway

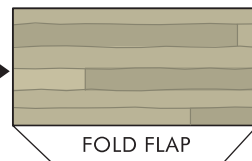
OPTIONAL STORE FRONT SIGN

FRONT SIGN

FOLD & GLUE

Stove Pipe -
place on roof

OPTIONAL: PLACE FLAP UNDER BACK DOOR



FOLD FLAP

FOLD FLAP

Whitewash City

ERIC HOTZ © 2005

FOLD FLAP

OPTIONAL

— FOLD
FLAP
OVER &
GLUE TO
BUILDING
SURFACE

EIA

CUT OUT

▲ BACK DOOR ROOF

Place Under

PERMISSION TO PHOTOCOPY FOR PERSONAL USE

FOLD FLAP

FOLD FLAP

ROOF ▲

FOLD & GLUE

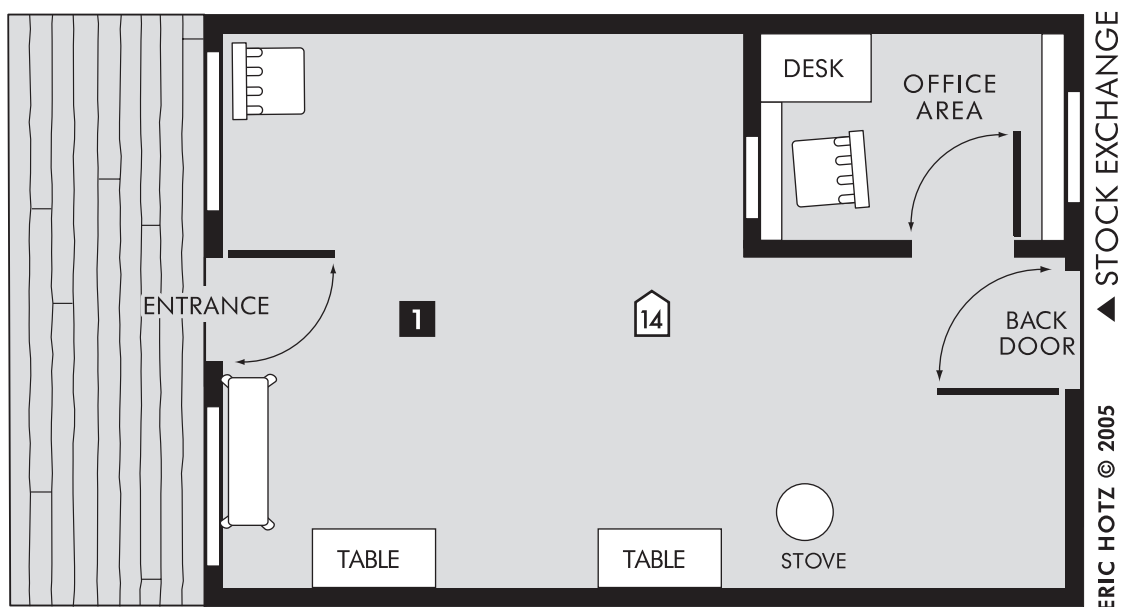
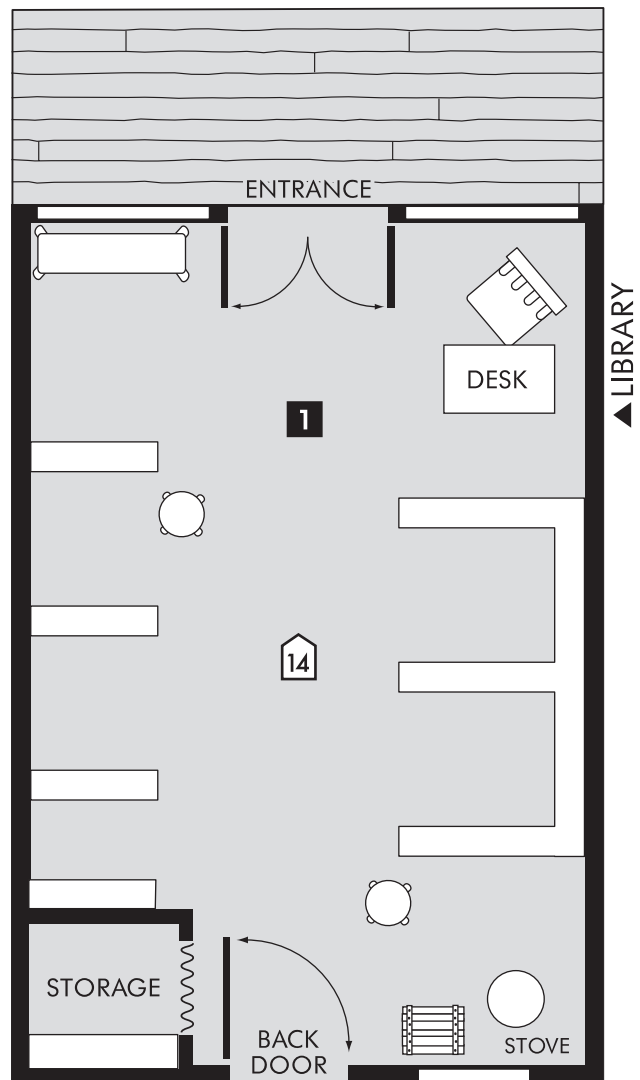
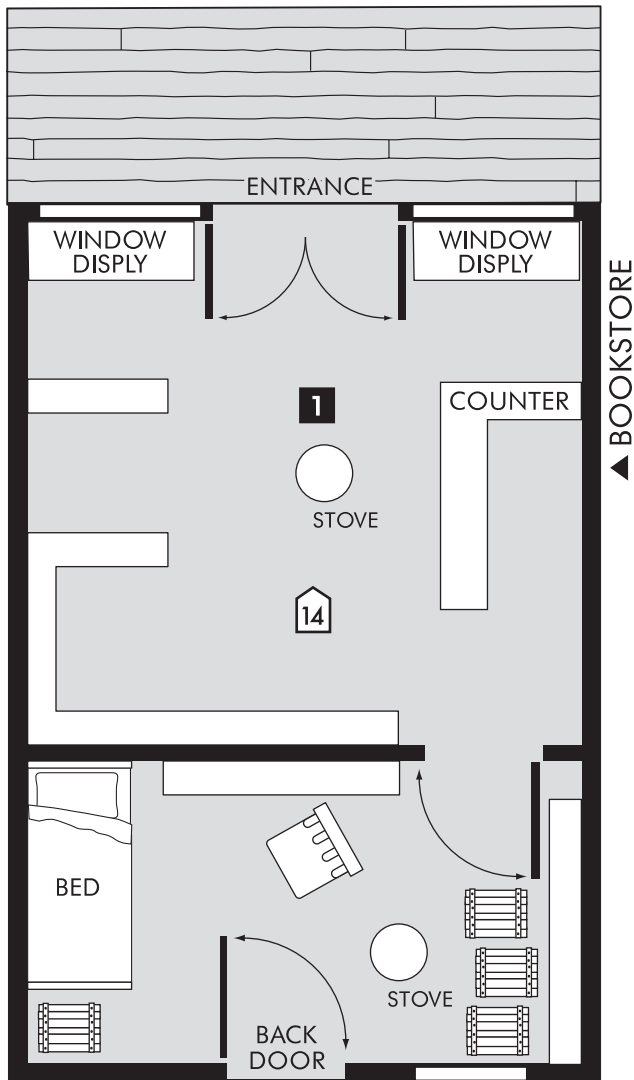
ERIC HOTZ © 2005

PRODUCT #2544

FLOOR PLANS 30mm scale

PAPER PLACES

NOTE: For best results, print onto card stock



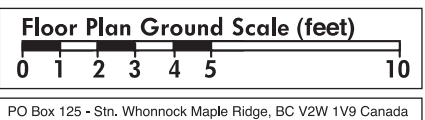
PERMISSION TO PHOTOCOPY FOR PERSONAL USE

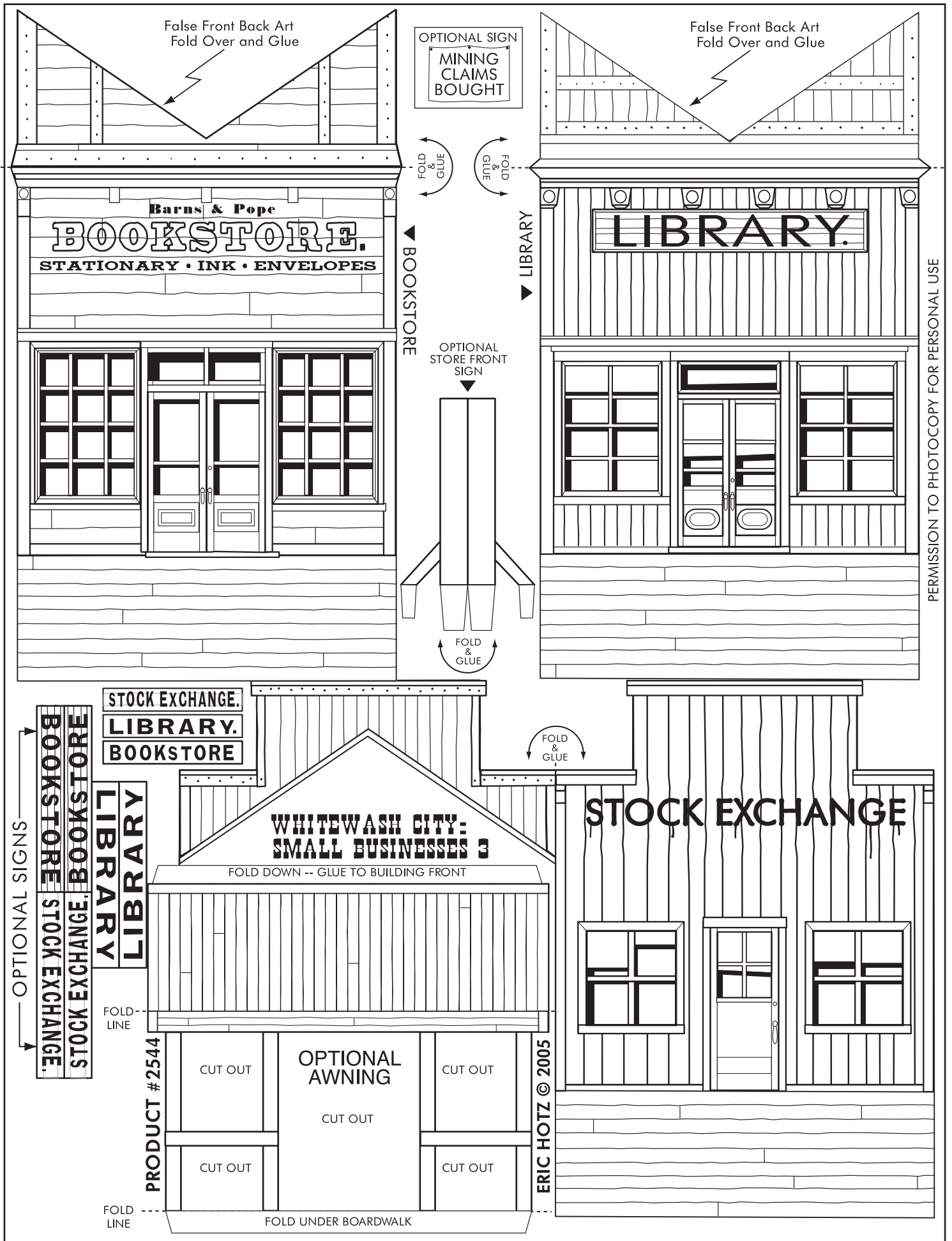
ERIC HOTZ © 2005

WHITEWASH CITY: SMALL BUSINESSES 3

WWW.ERICHOTZ.COM/WHITEWASH.HTML

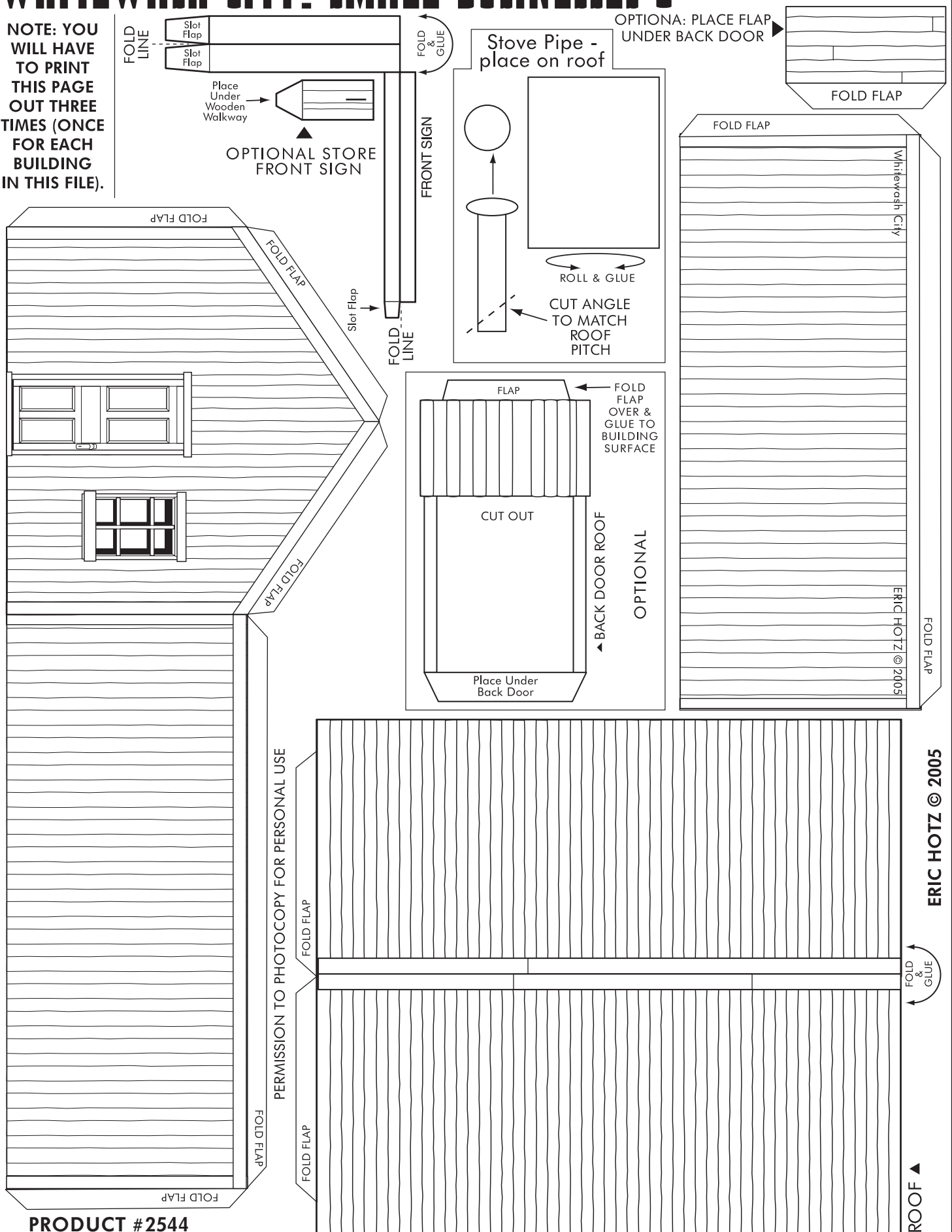
PRODUCT #2544





WHITEWASH CITY: SMALL BUSINESSES 3

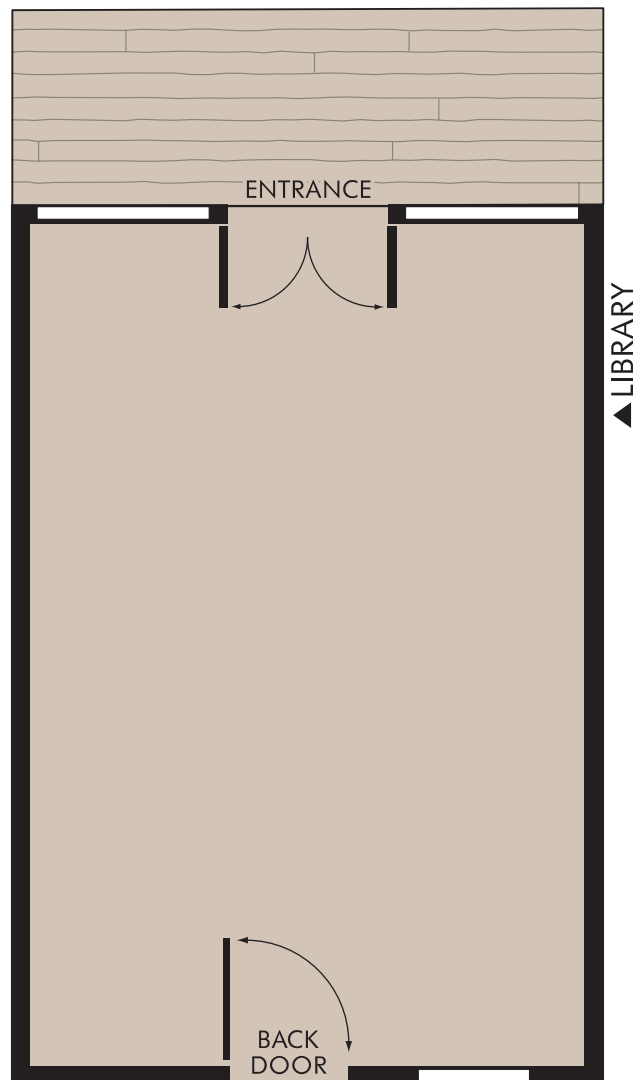
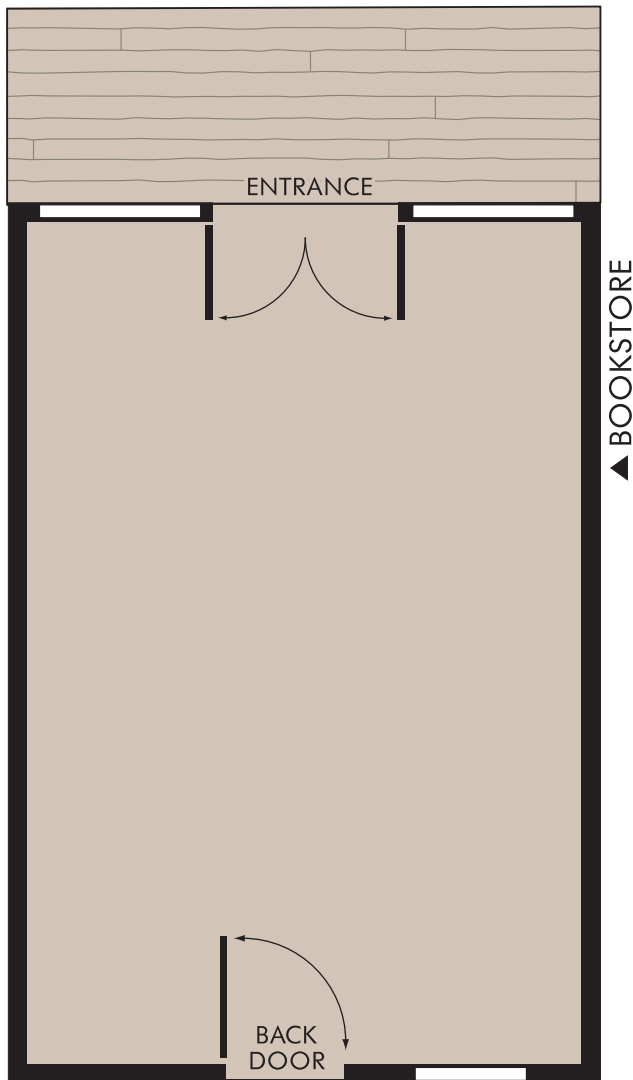
NOTE: YOU WILL HAVE TO PRINT THIS PAGE OUT THREE TIMES (ONCE FOR EACH BUILDING IN THIS FILE).



FLOOR PLANS 30mm scale

PAPER PLACES

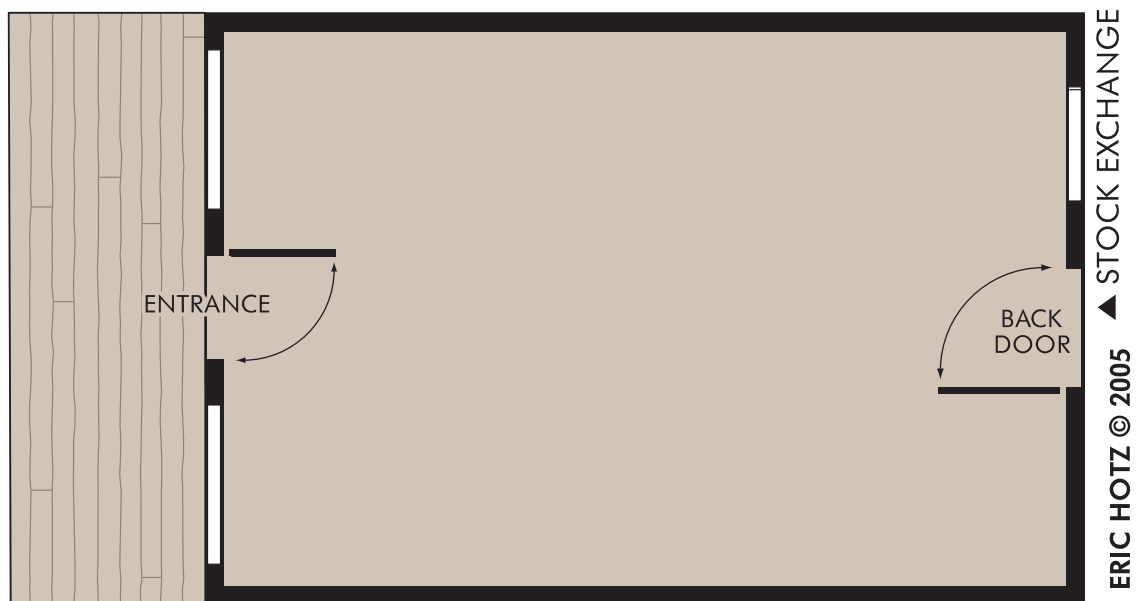
NOTE: For best results, print onto card stock



PERMISSION TO PHOTOCOPY FOR PERSONAL USE

CREATE YOUR OWN INTERIORS

Draw in your own interior furnishings, walls, doors, etc.



WHITEWASH CITY: SMALL BUSINESSES 3

WWW.ERICHOTZ.COM/WHITEWASH.HTML

PRODUCT #2544



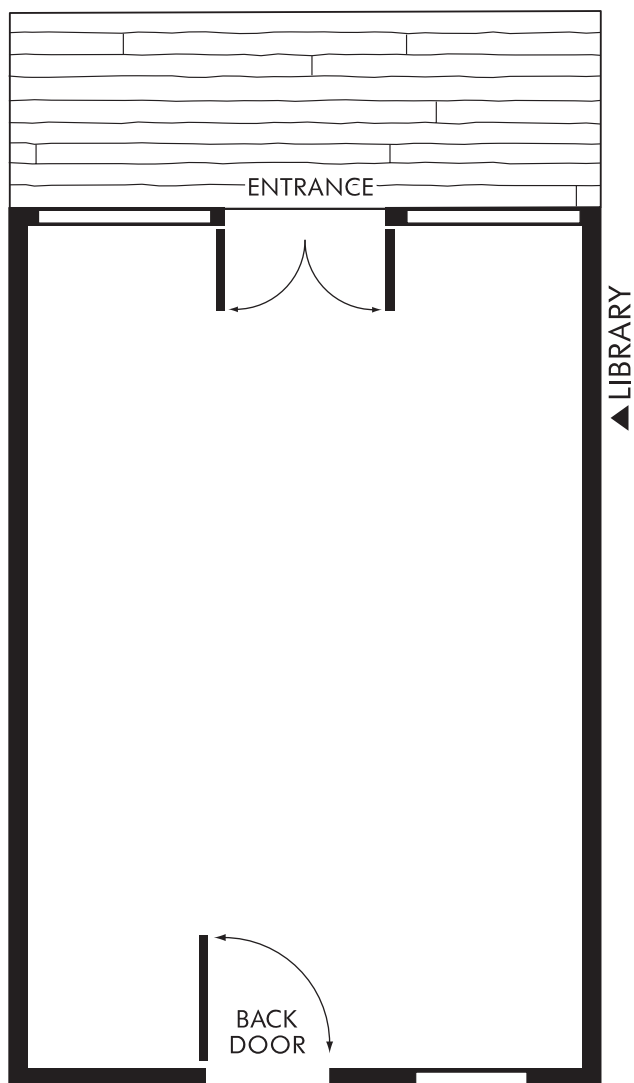
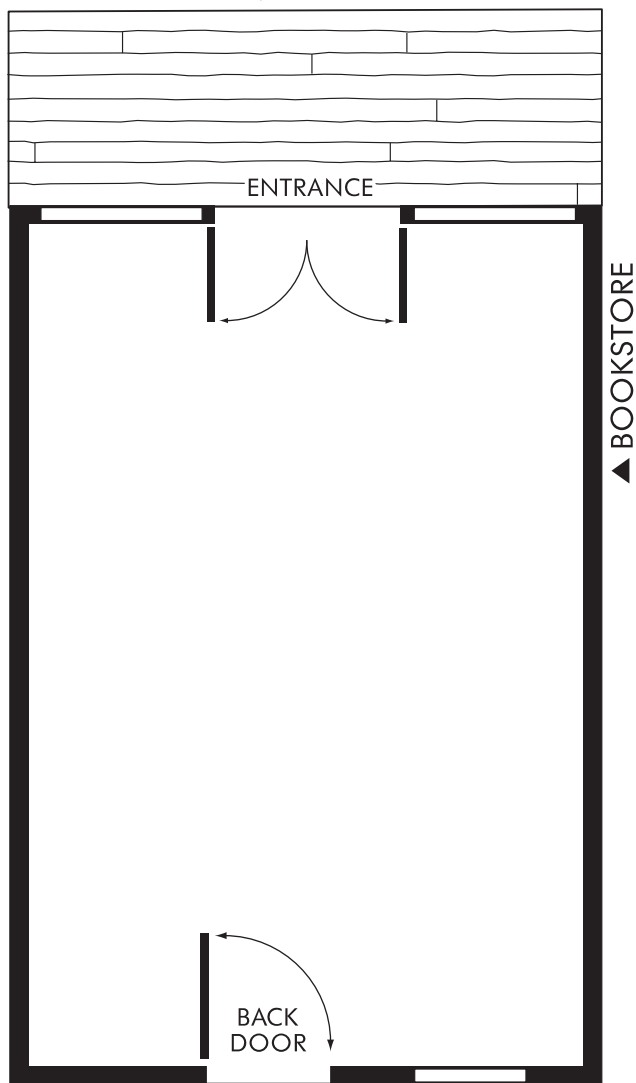
PO Box 125 - Stn. Whonnock Maple Ridge, BC V2W 1V9 Canada

ERIC HOTZ © 2005

FLOOR PLANS 30mm scale

PAPER PLACES

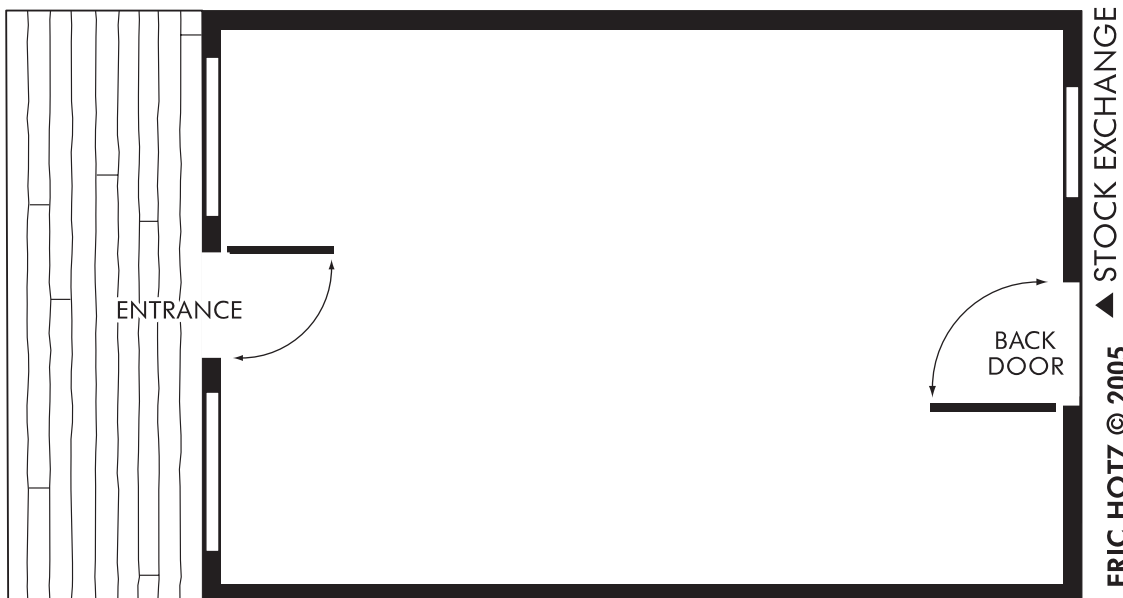
NOTE: For best results, print onto card stock



PERMISSION TO PHOTOCOPY FOR PERSONAL USE

CREATE YOUR OWN INTERIORS

Draw in your own interior furnishings, walls, doors, etc.

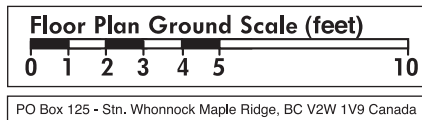


ERIC HOTZ © 2005

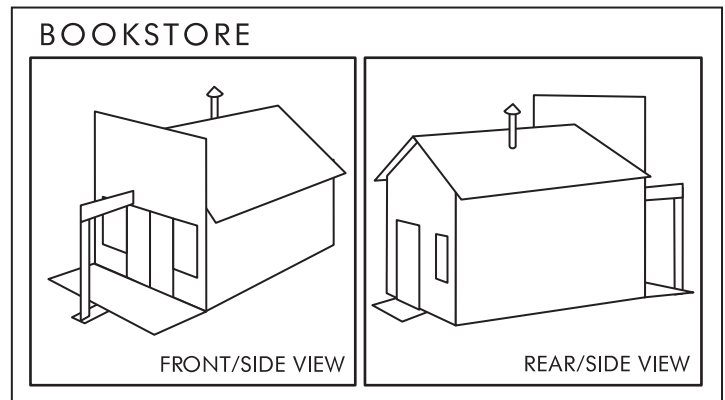
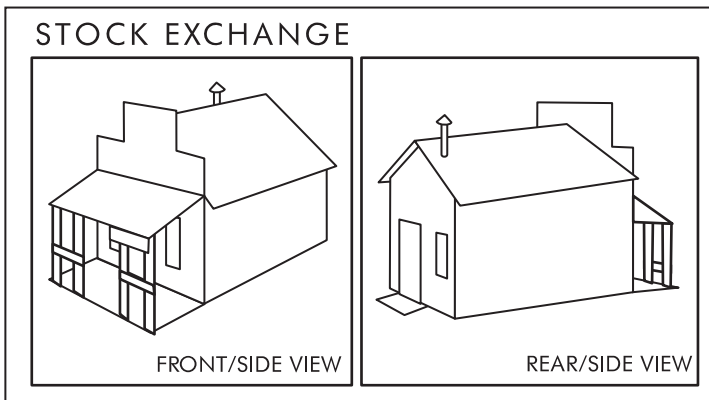
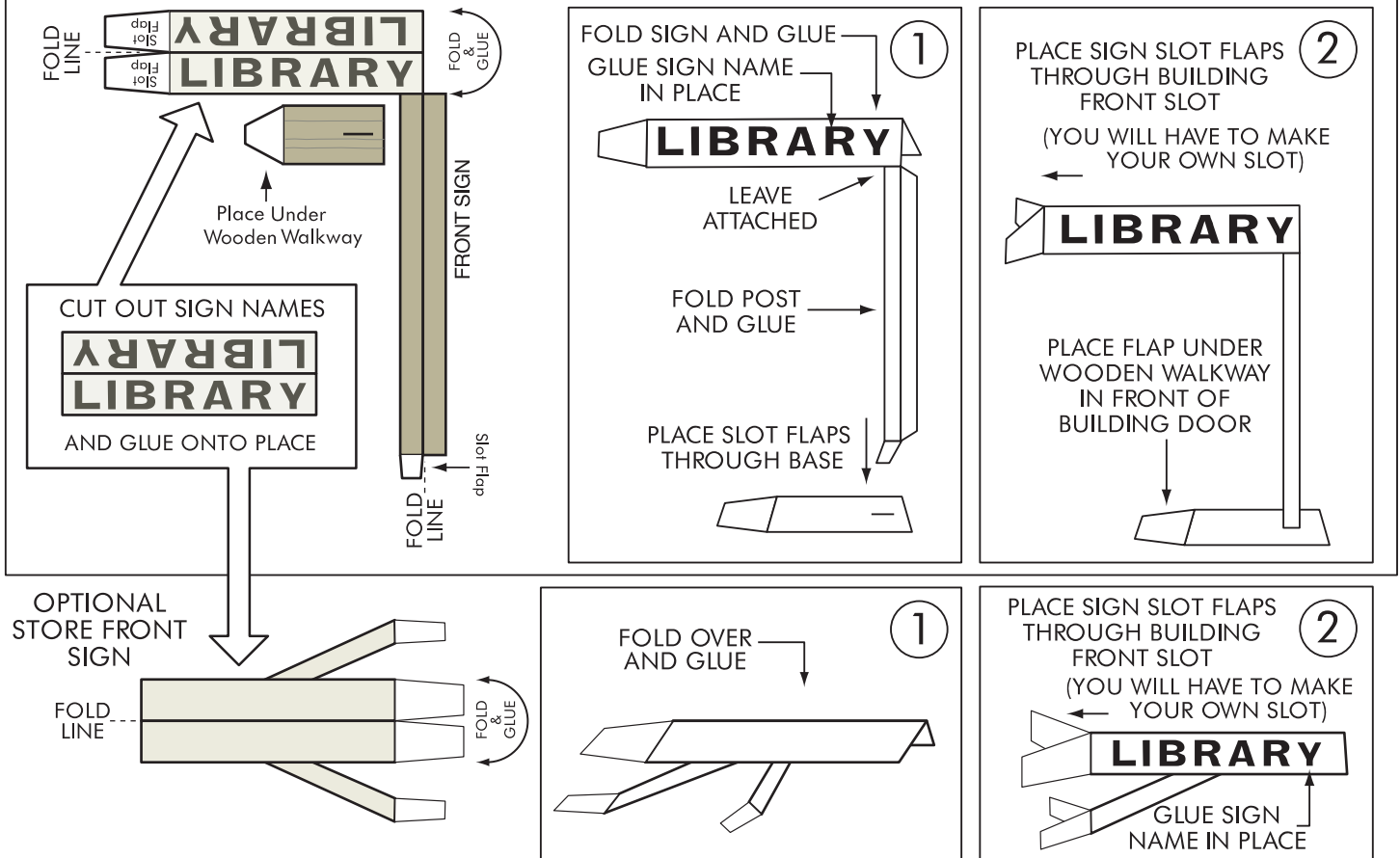
WHITEWASH CITY: SMALL BUSINESSES 3

WWW.ERICHOTZ.COM/WHITEWASH.HTML

PRODUCT #2544



MAKING THE SIGN & POST



There are several options given for the construction of these buildings, which will allow your models to be unique. There is an awning and two types of store front signs that may be used may be used, or not.

NOTE: You can also use the optional business signs found in the Add-On Kits! (these are items: 25000C.pdf, 25000I.pdf, 25000L.pdf and 25000S.pdf)

