

=> DERELICT BUILDING SECTIONS -



RE7OLUTION
=>a dark tomorrow_





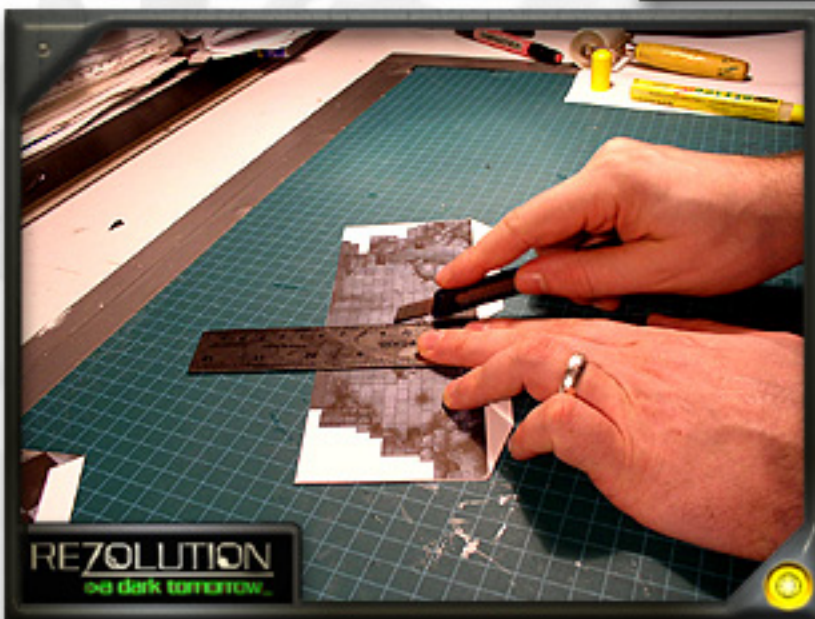
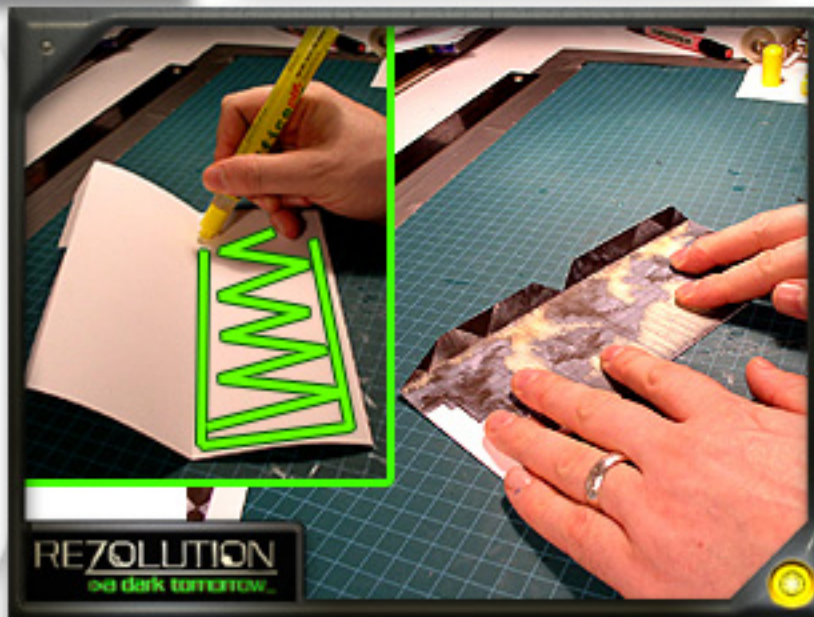
Cut, score and fold your model as shown. Pay careful attention to areas marked with "Reverse side score" arrows. The two lower floor tabs should be raised.

TIP:

Visit www.worldworksgames.com for techniques, tips & tricks on cutting, scoring and much more!

Apply a thin bead of glue along the inside wall section. Be sure to apply glue in a border/zigzag pattern as shown to ensure a secure bond.

Fold over and burnish in place. Rub both sides against your work surface removing any air bubbles and distributing the glue evenly to all corners and edges.

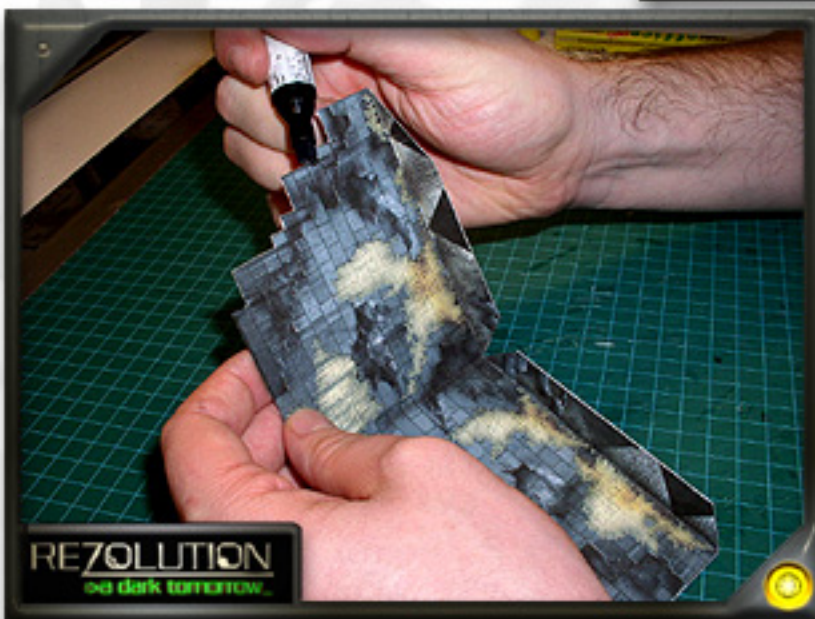


Lightly Score the back side of your wall section where marked.

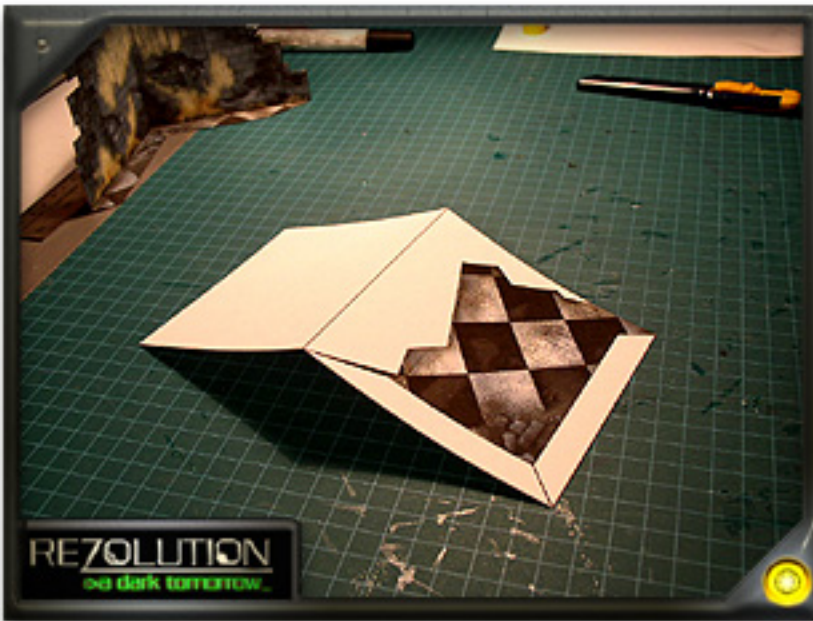


Fold the wall inward as shown.

Cut away the remaining whitespace surrounding the wall section.



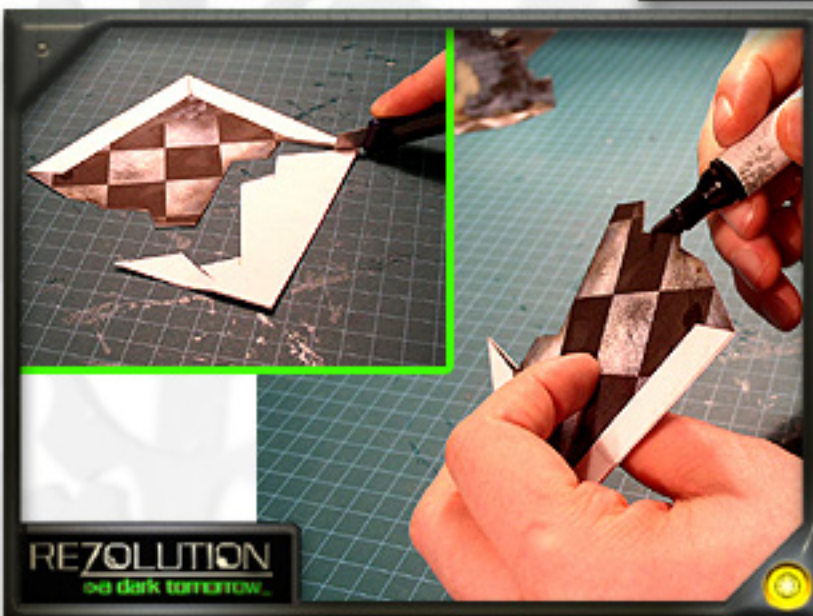
Using a black or grey felt, take a couple of seconds to "Edge" your models removing any visible white lines.



Set your wall section to the side for a moment and let's concentrate on the building floor.

Glue the inside of your floor section as shown.

Carefully burnish to remove any air bubbles and distribute the glue evenly.



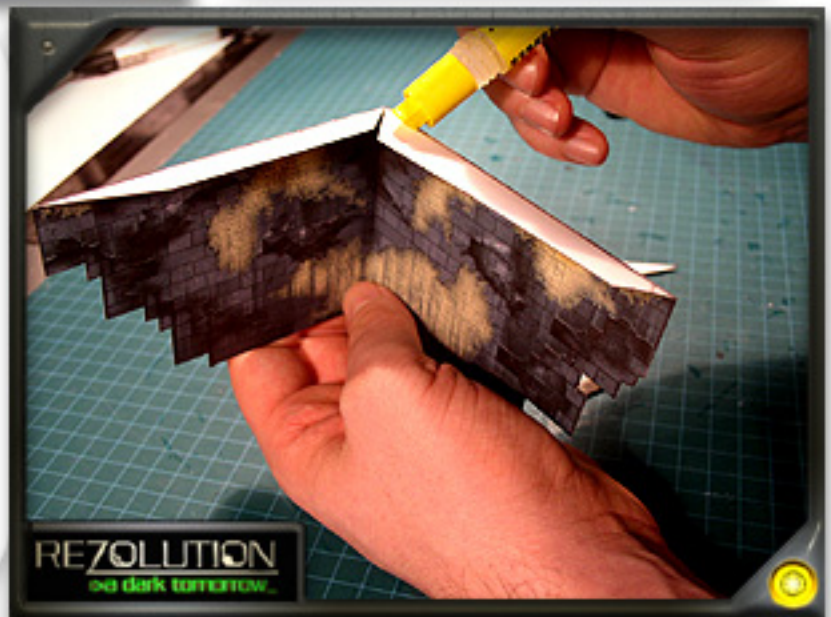
Once dry, carefully cut away the remaining white space on your floor section.

Edge your model with a black or grey felt.



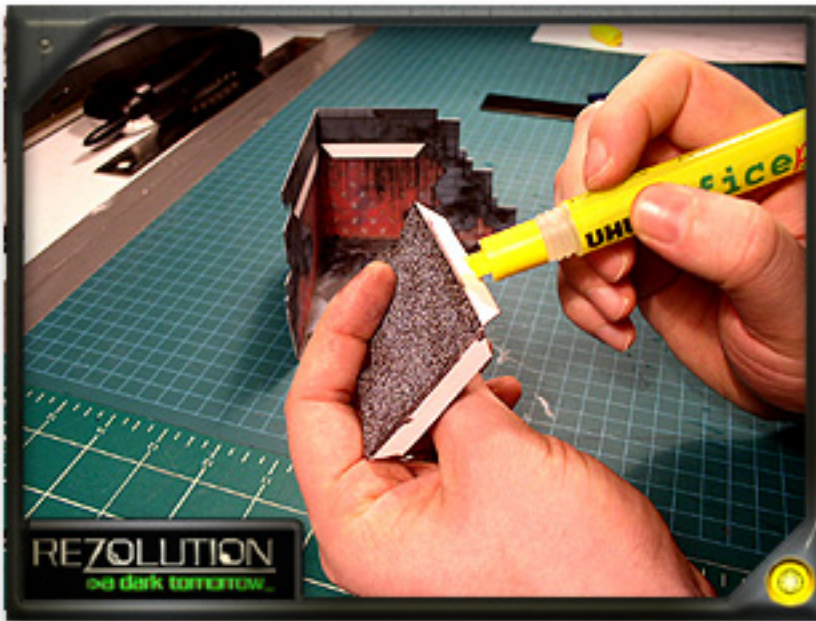
Bring forward your wall section in preparation for mounting to the floor piece.

Apply a thin but even bead of glue to the underside of the wall/floor tabs.



Maneuver the tabs over our floor section and align where marked. Lightly press in place.

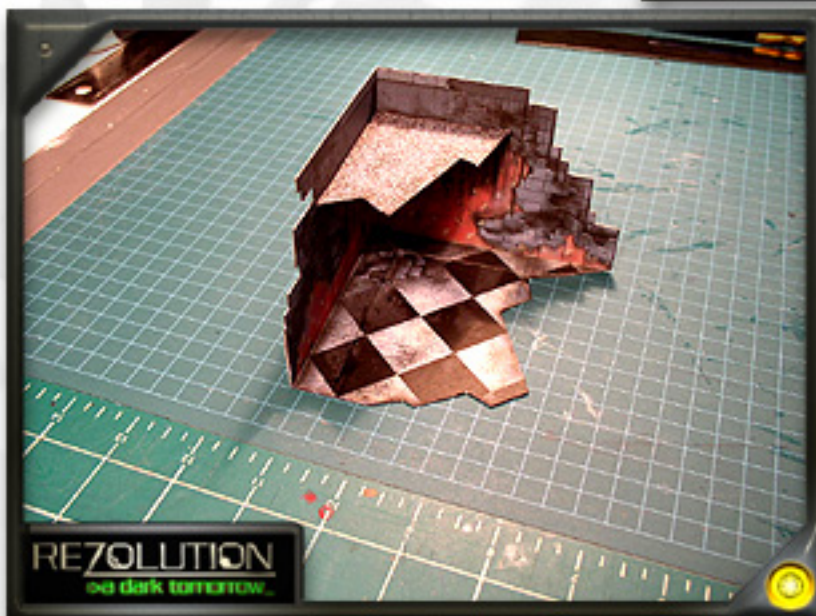
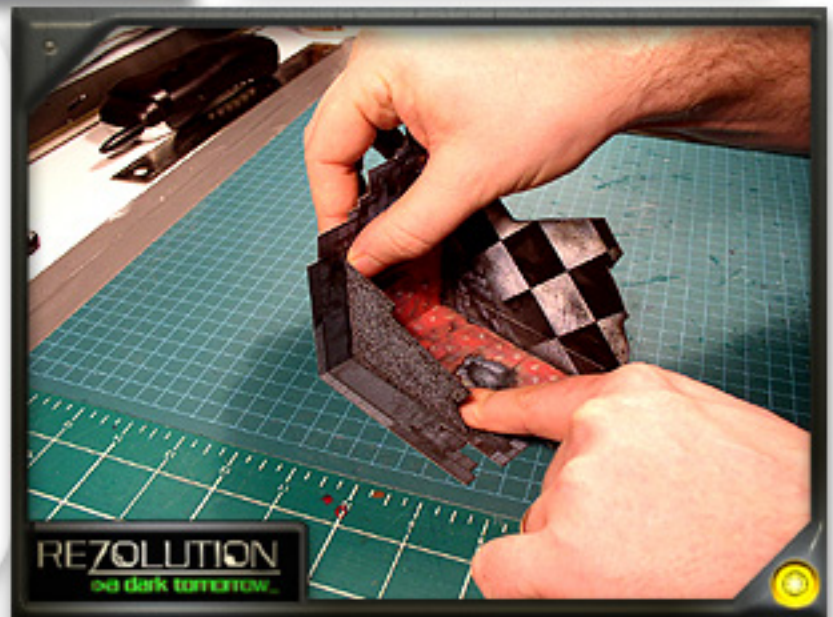
Examine the rear side of your wall section to make sure there is no overhang. Once you are sure of the position burnish in place until dry.



To apply the optional upper floor section we have first folded, glued and cut away the top floor section (just like we did with the lower floor section).

Apply a bead of glue to the inner tabs of the upper floor section.

Position the wall section on its side and attach the glue tabs where marked. Apply pressure for at least 30 seconds until dry.



Edge any remaining visible whitespace with a black or grey felt marker.

By building a number of derelict wall sections you can create entire decrepit buildings to litter your wasteland!