

>HARDPOINT TERMINAL -



RE7OLUTION
>a dark tomorrow_

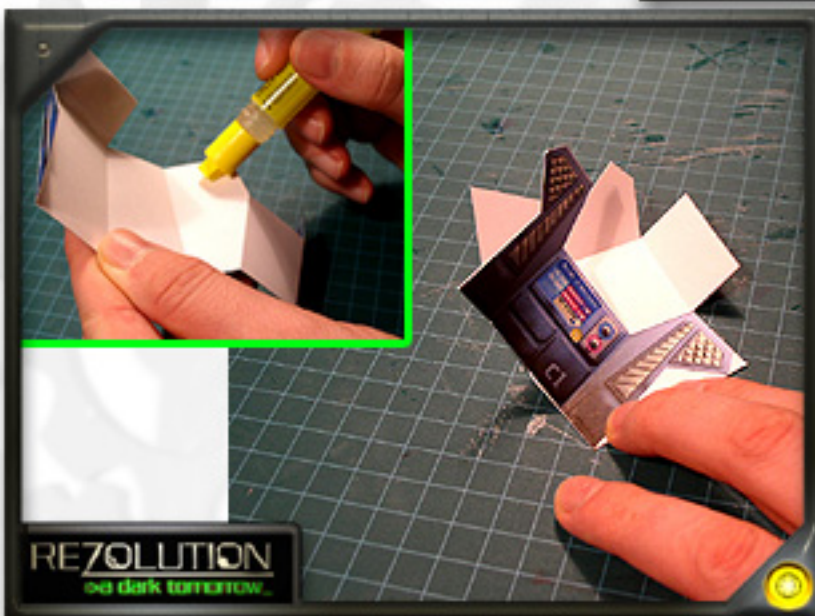
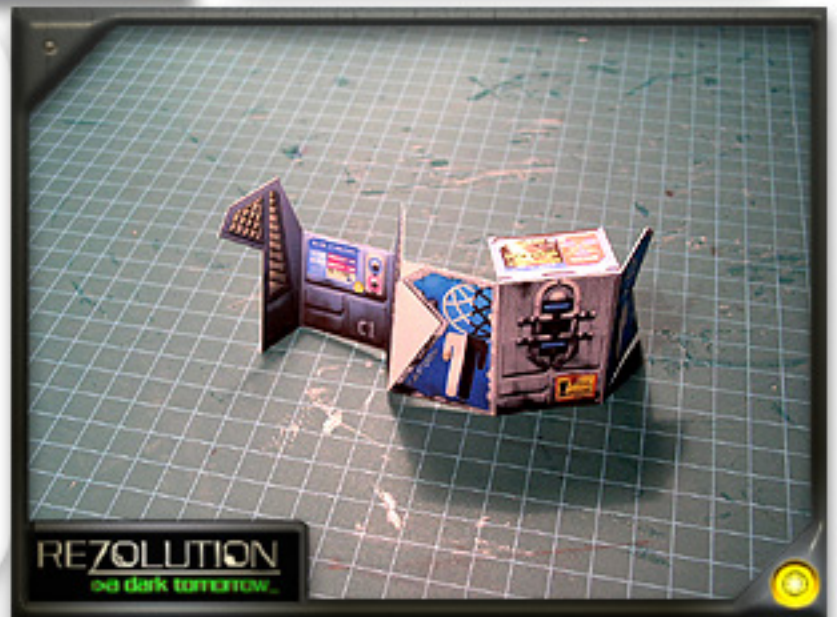




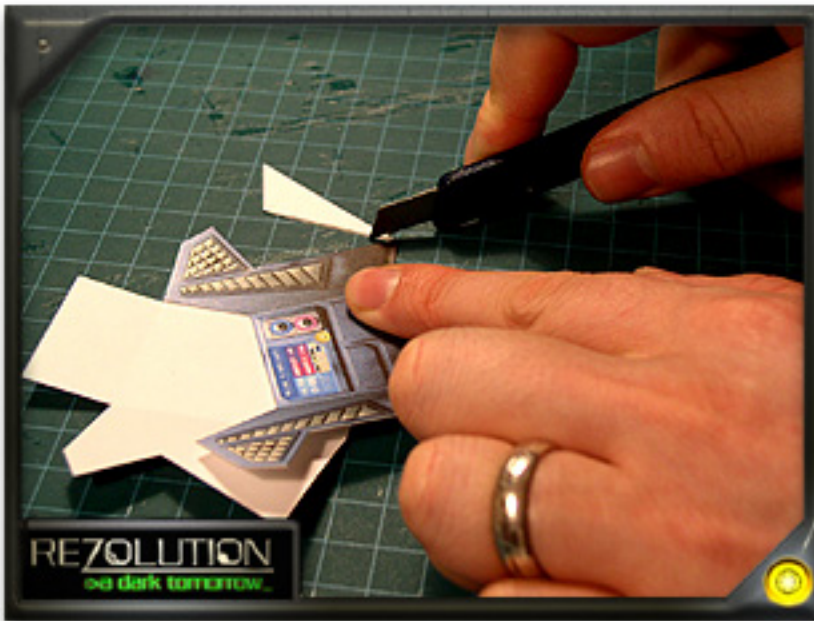
Cut and score your hardpoint terminal as shown. Pay careful attention to areas marked with “reverse side scoring”.

Visit www.worldworksgames.com for tutorials on cutting and scoring.

Fold your hardpoint terminal as shown.

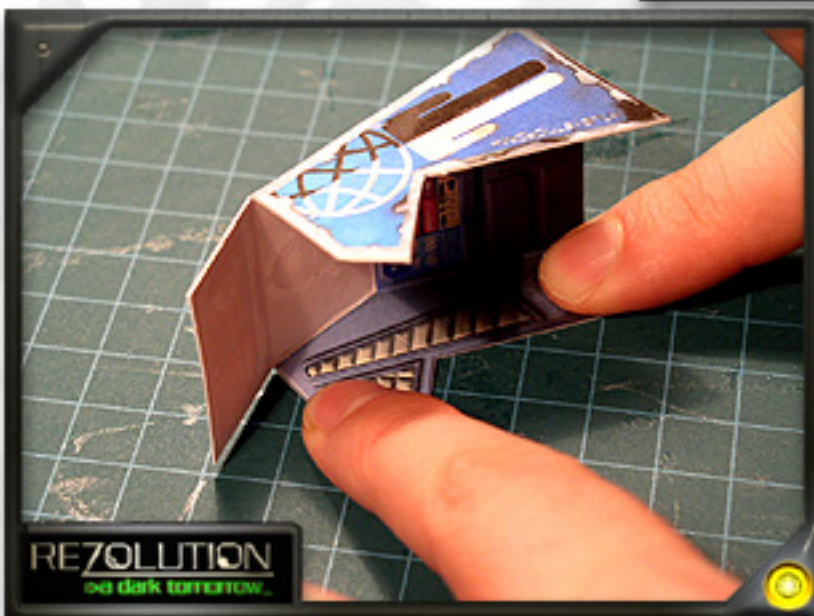
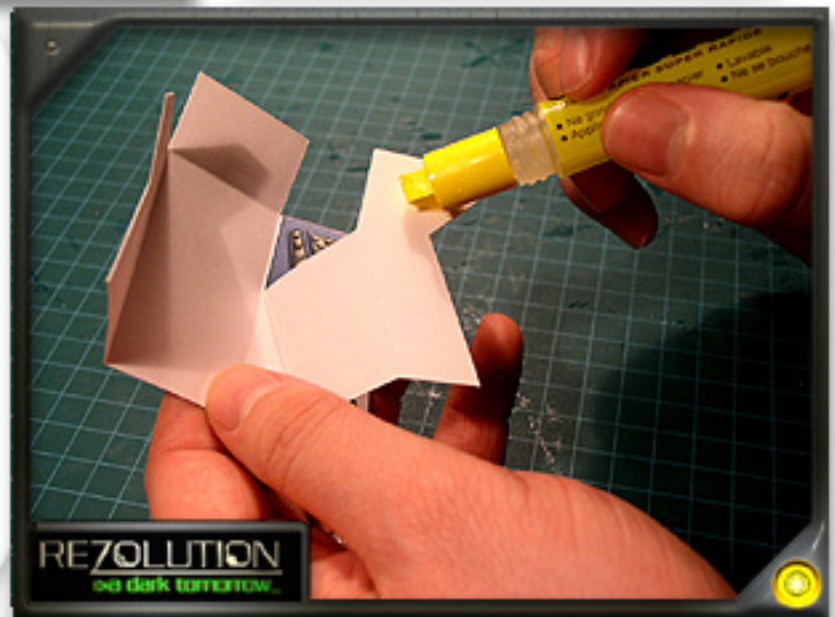


Apply a thin but even glue along the inside edge of the terminal wall as shown. Fold over and burnish removing any air bubbles and distributing the glue evenly.



Once the outside wall section has dried carefully cut away the remaining white space.

Apply a thin but even bead of glue along the remaining wall flap as shown.



NOTE:
Notice the position of the model. It is very important that you glue this section against your table as shown. If you attempt another position you will have alignment problems.

Carefully align the inside and outside walls together and apply even pressure across the section.



Apply glue to the back side of the remaining upper view screen.

Fold over and hold in place until dry.



Using a black or grey felt marker "Edge" your model concealing any white cut and fold lines.