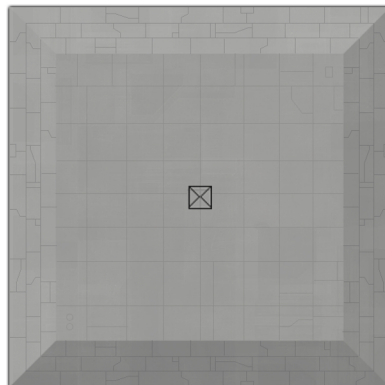
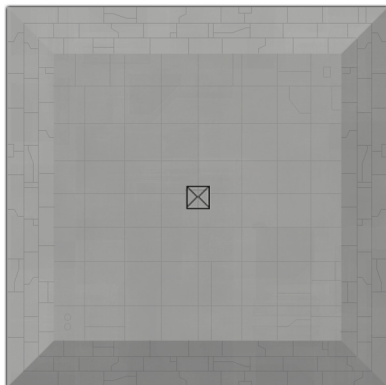
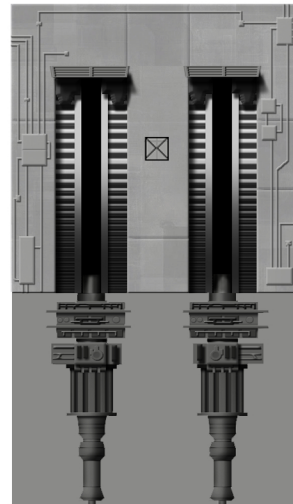
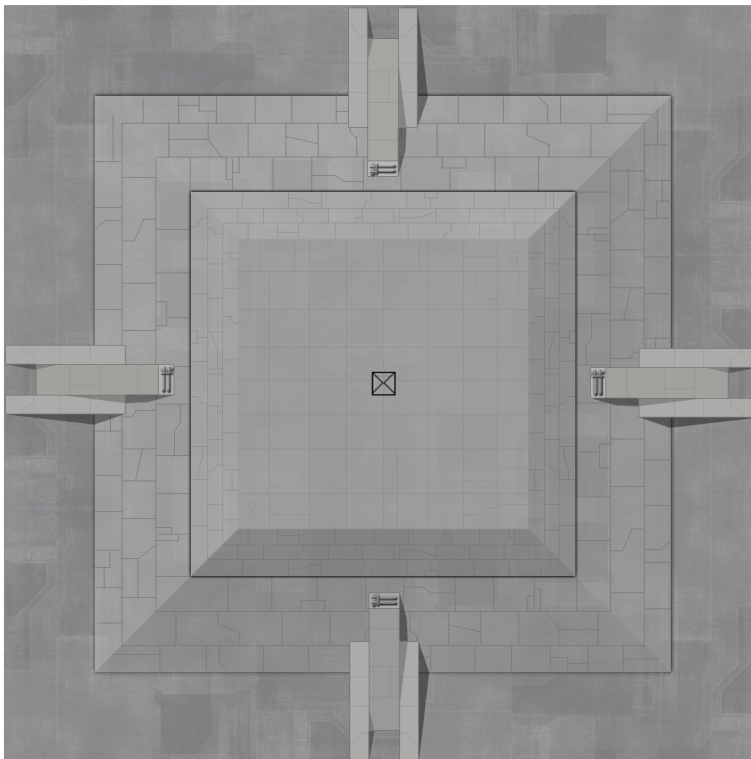
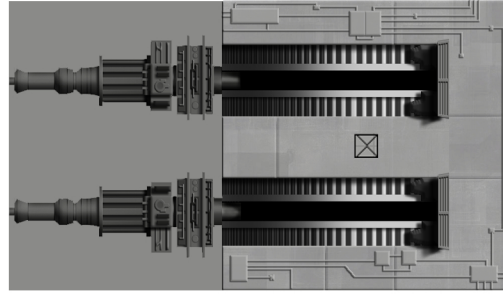
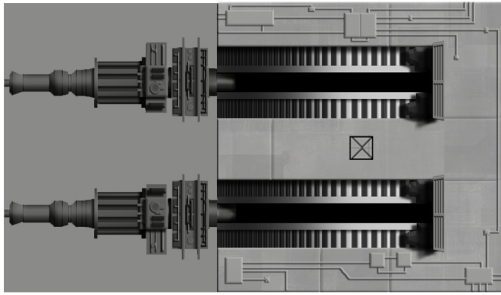


# TURBOLASER TOWERS



Print out this page to construct one tall and two short towers. If you want rotating turrets, cut out the small boxes with the "X" in the middle and insert a small, square 1/8" x 1/16" battery in each, being sure that they are all polled in the same direction. Cover the battery on the turret with the detail patch.

Save ink and keep the color of your towers consistant by printing "grayscale."

