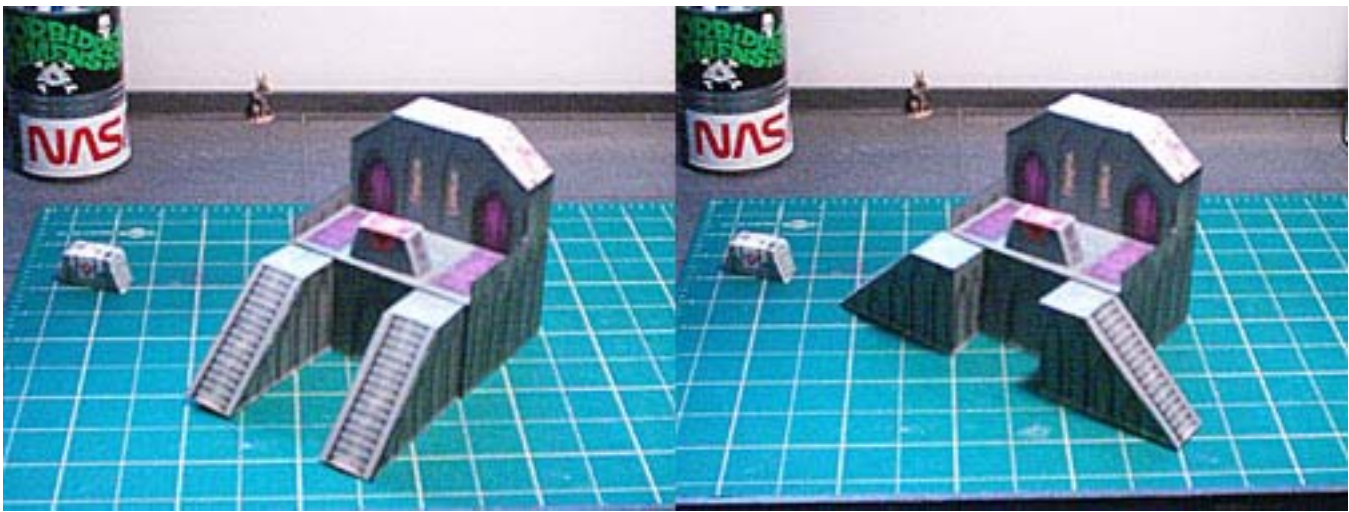




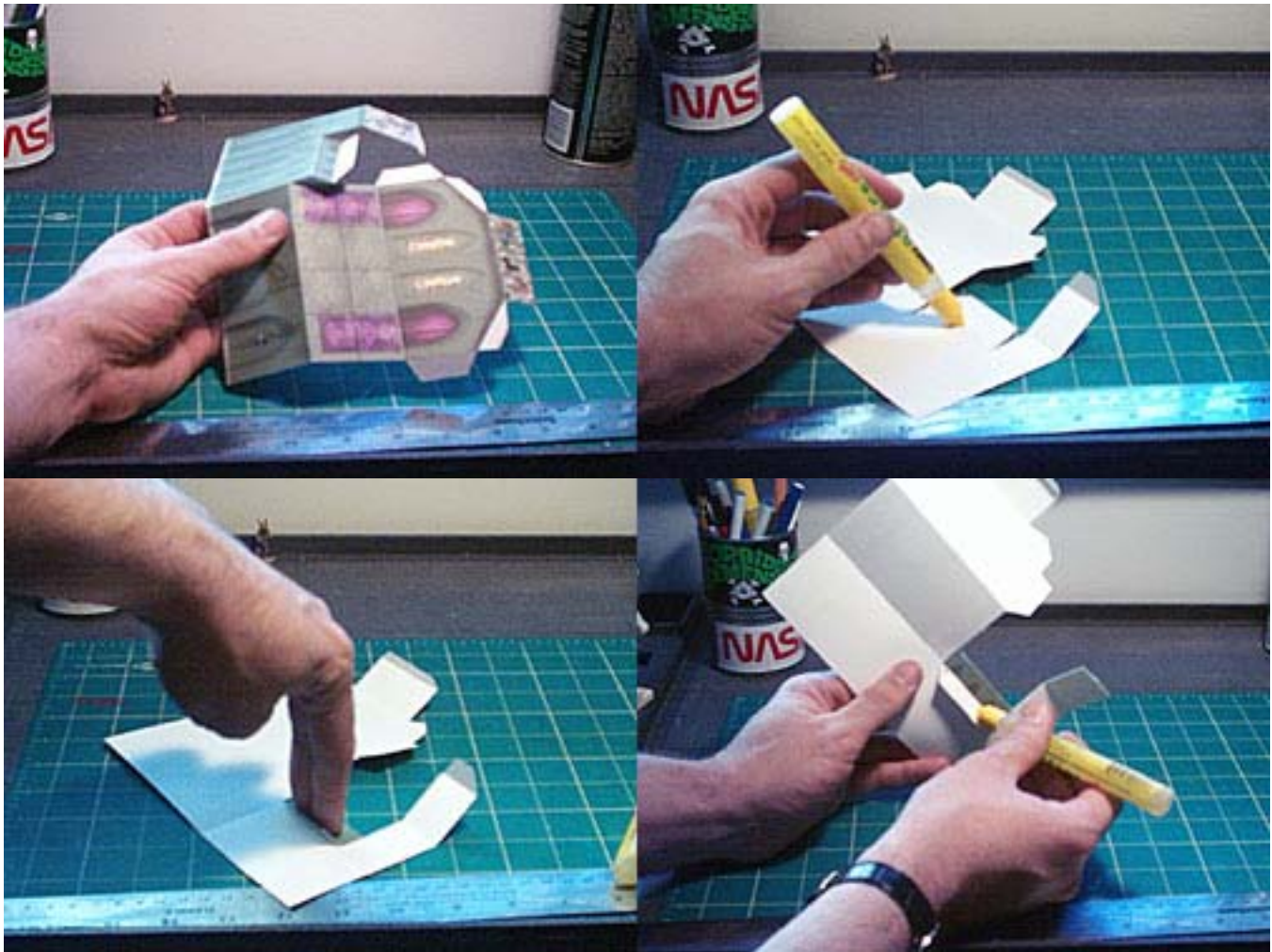
MODEL TYPE:	ALTAR
DIFFICULTY:	3 out of 5
APPROX BUILD TIME:	Quick - 5 to 10 minutes <i>(Time may vary depending on skill level)</i>
DUPLICATIONS <i>(Suggested):</i>	1 or as needed
EDGING COLOR:	Grey or Black felt <i>(What is "Edging"? Please refer to the included "Beginners Guide".</i>

Using the optional altars and banners, this model can be dressed as the temple of the Chaotic Snake Priests of U'U'U'U'rrggHHH, or the blessed shrine of the Goddess of Fluffy Bunnies. Your choice! Don't forget about the matching altar ramp-style stairs! Like the Royal Box it doesn't connect directly to the stand units, however if you trim the railings you can make a pathway.



STEP 1:

Cut-and score the front piece as shown. Apply glue to the underside of the railing and fold it over. Press hard until it's dry-ish, then apply glue to the remaining tabs on the railing side..



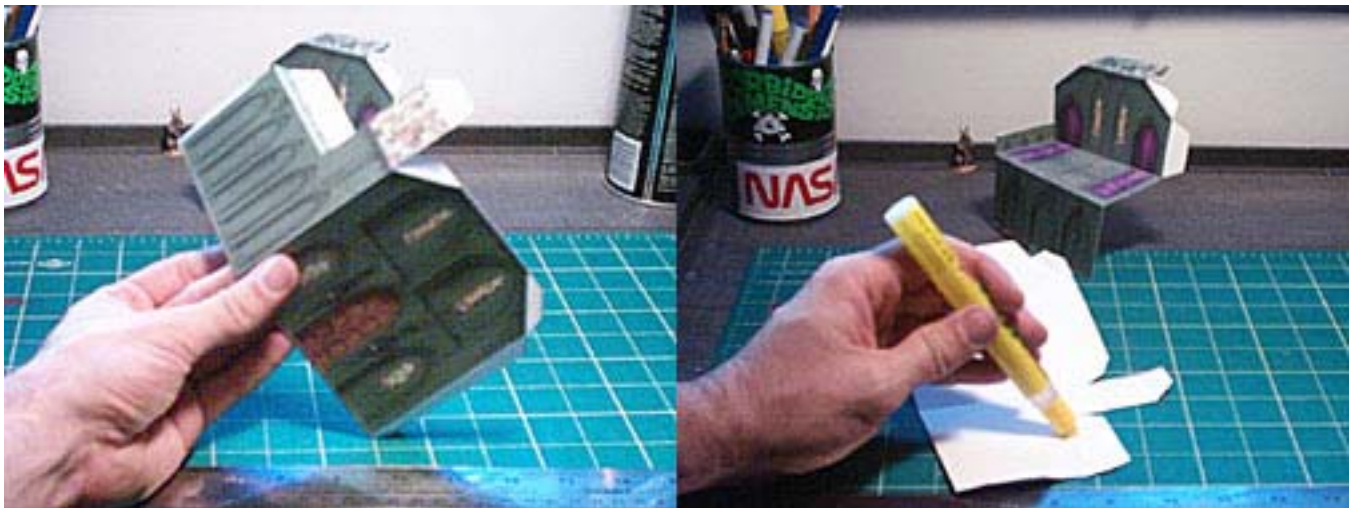
STEP 2:

Fold the side over and rest the carpeted area atop its support tab. Fold the roof over and tuck the tab in as shown. Set aside.



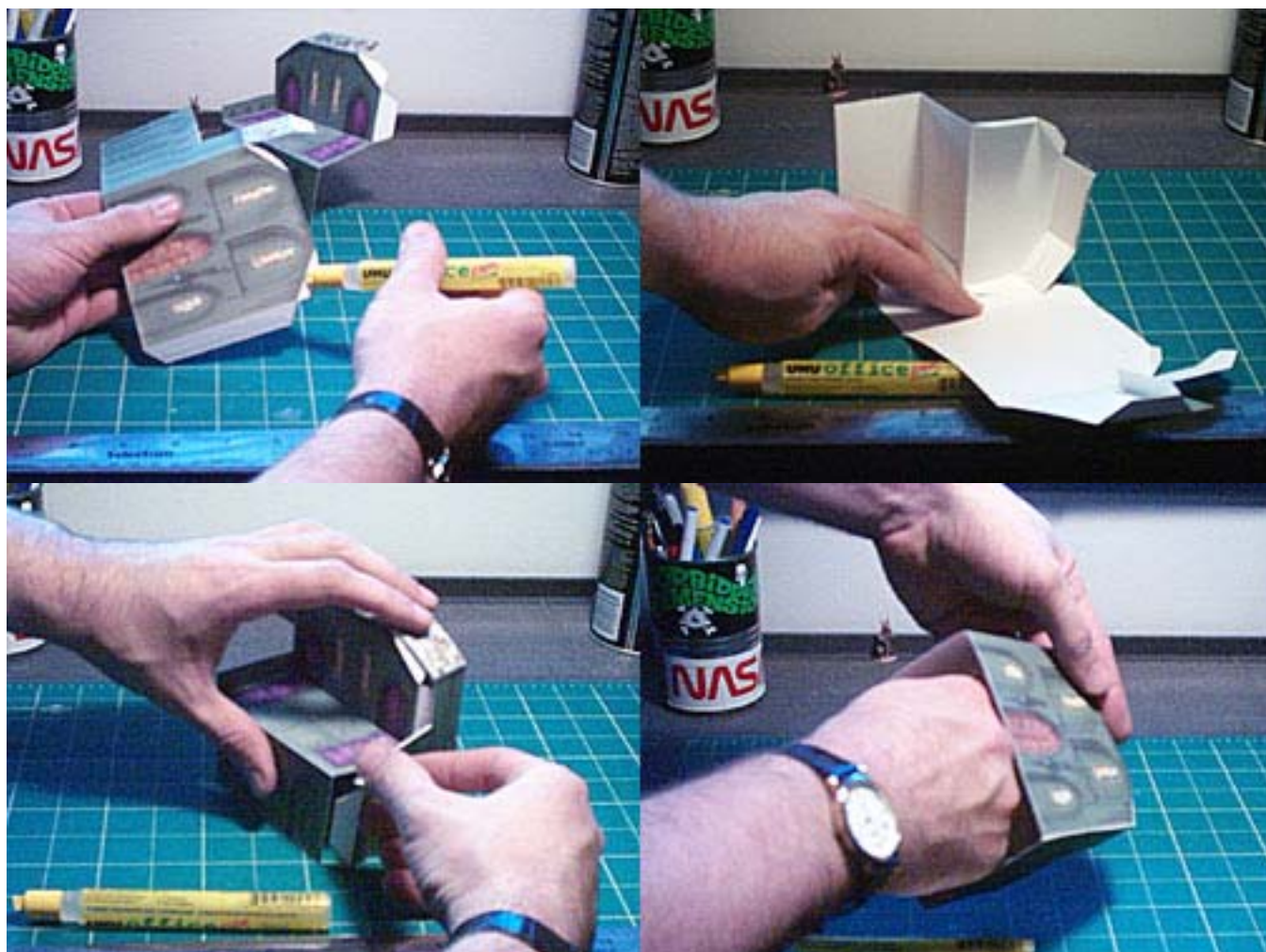
STEP 3:

Cut and score the back. As on the front, apply glue to the reverse of the railing and fold it over. Glue down the roof section at top.



STEP 4:

Time to join the two halves. Apply glue to all the remaining tabs and wrap the back around the front, starting at the long wall on the back. Tuck the tabs in and press everything together.



Stone Altars:

The Altars are basic box folds, cut and score as shown. Glue up the tabs except for the big one, then fold the sides in. Finally glue the long tab and tuck it into the completed box. Hold until dry.

