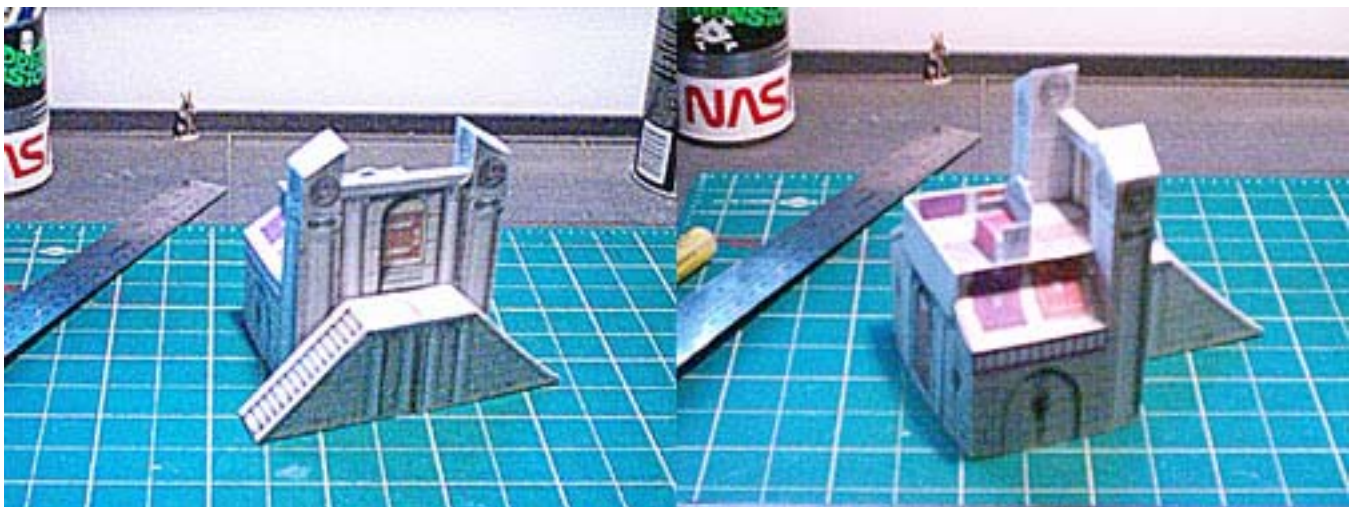


WORLDWORKS GAMES

ArenaWorks™

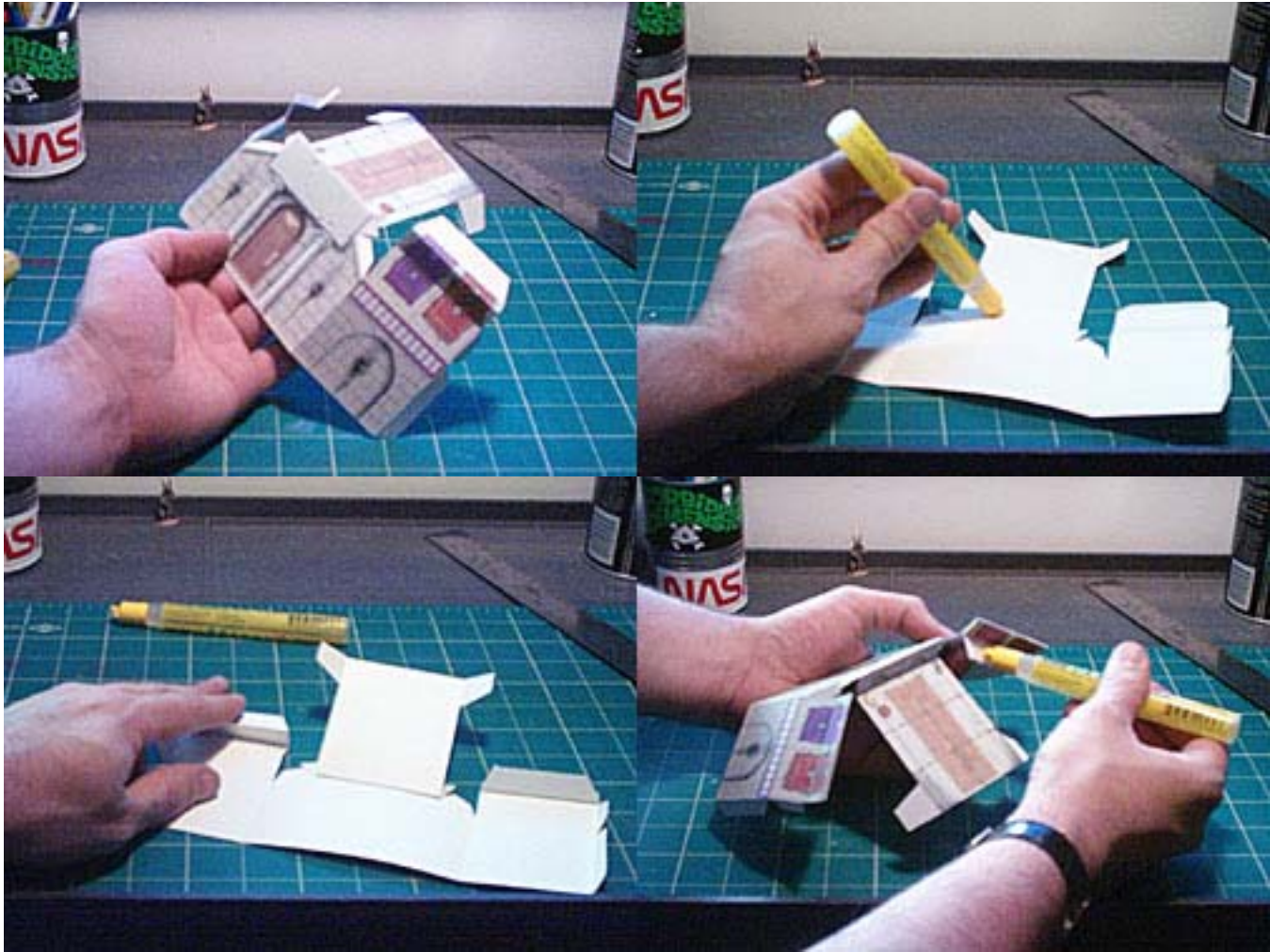
MODEL TYPE:	ROYAL BOX
DIFFICULTY:	3 out of 5
APPROX BUILD TIME:	Quick - 5 to 10 minutes <i>(Time may vary depending on skill level)</i>
DUPLICATIONS <i>(Suggested):</i>	1 or as needed
EDGING COLOR:	Grey felt <i>(What is “Edging”? Please refer to the included “Beginners Guide”).</i>

Ah, the opulent splendour of the Royal Box. Here a player can feel like a king...or a target! The options include banners to hang over the railings and an Imperial Throne.



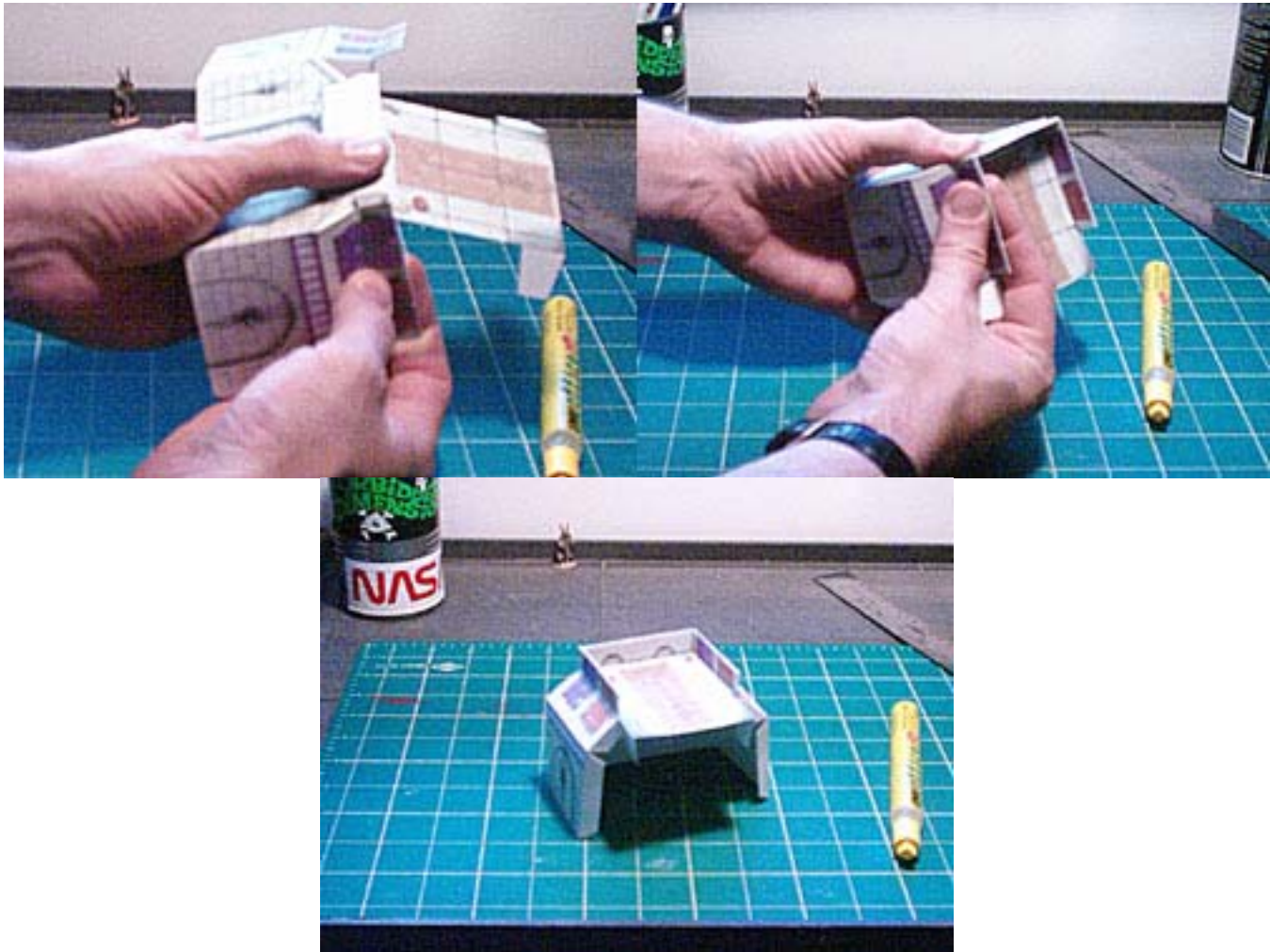
STEP 1:

Cut-and score the front piece as shown. Apply glue to the underside of the three railings and fold them over. Don’t wait until it’s dry, glue the support tabs for the carpeted floor and the little triangular tabs beside the railings.



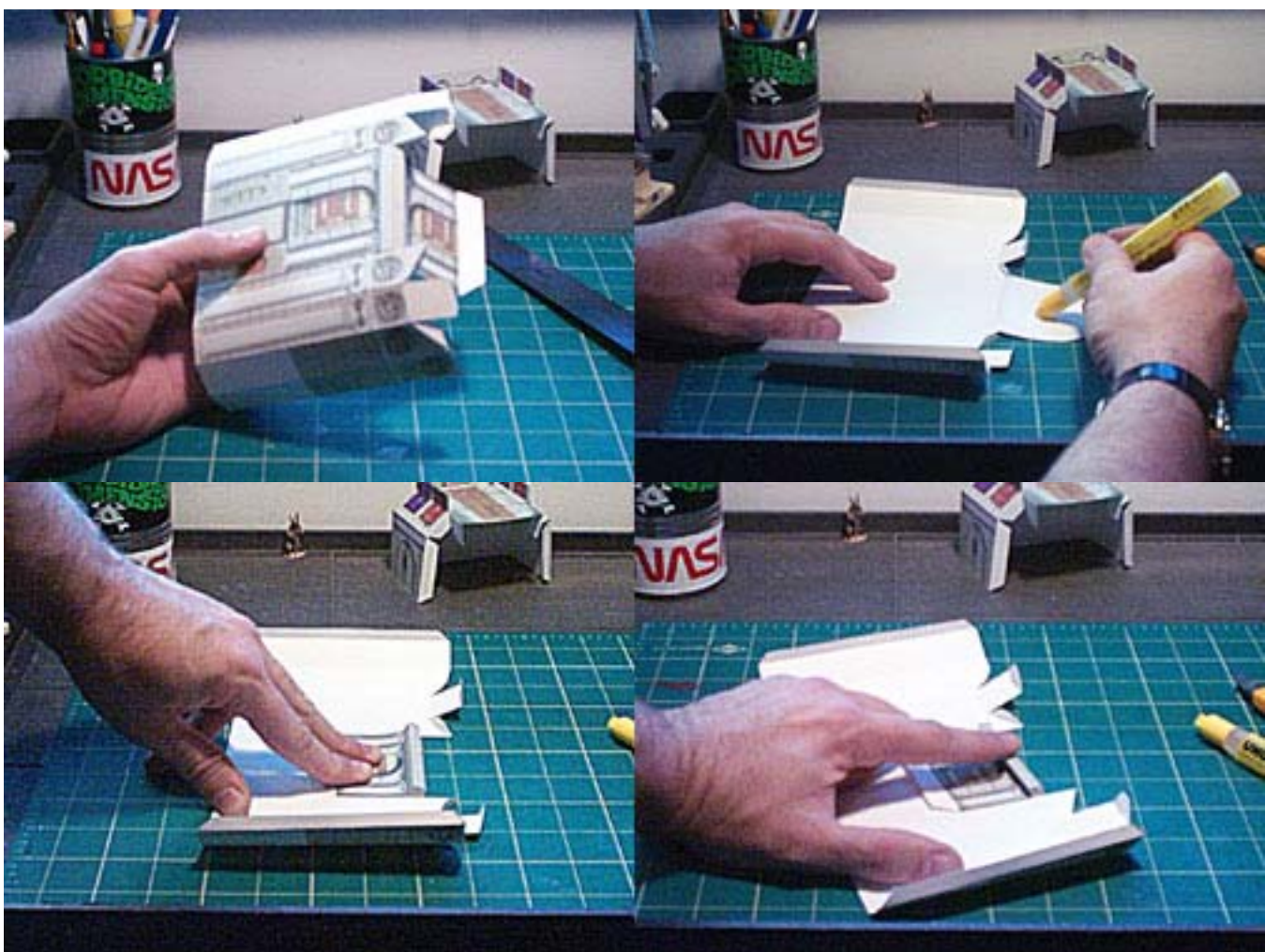
STEP 2:

Fold the sides over while you tuck the triangular tabs inside the side railings. Yes, it’s tricky; but when you are done you should wind up with the picture on the bottom.

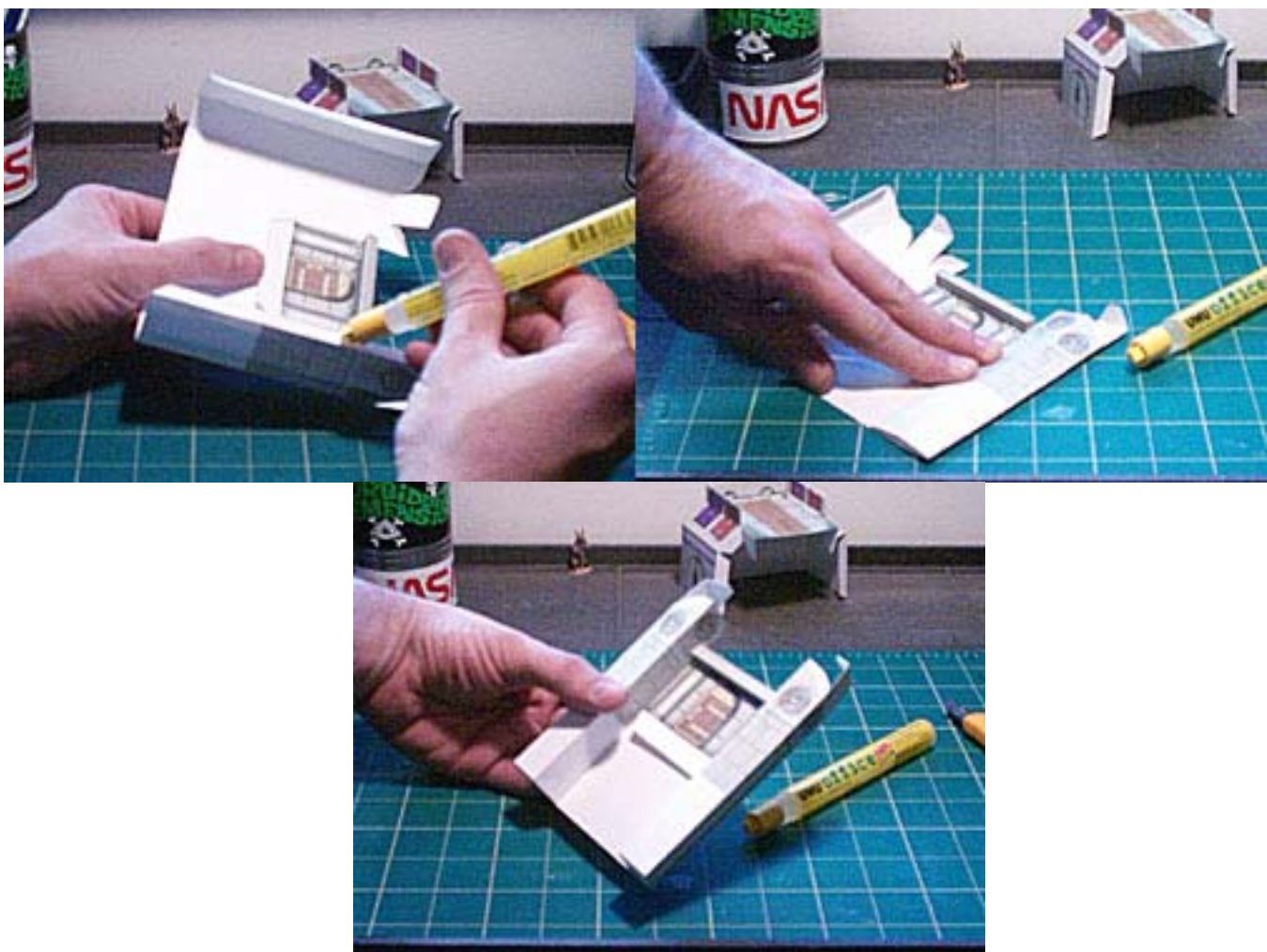


STEP 3:

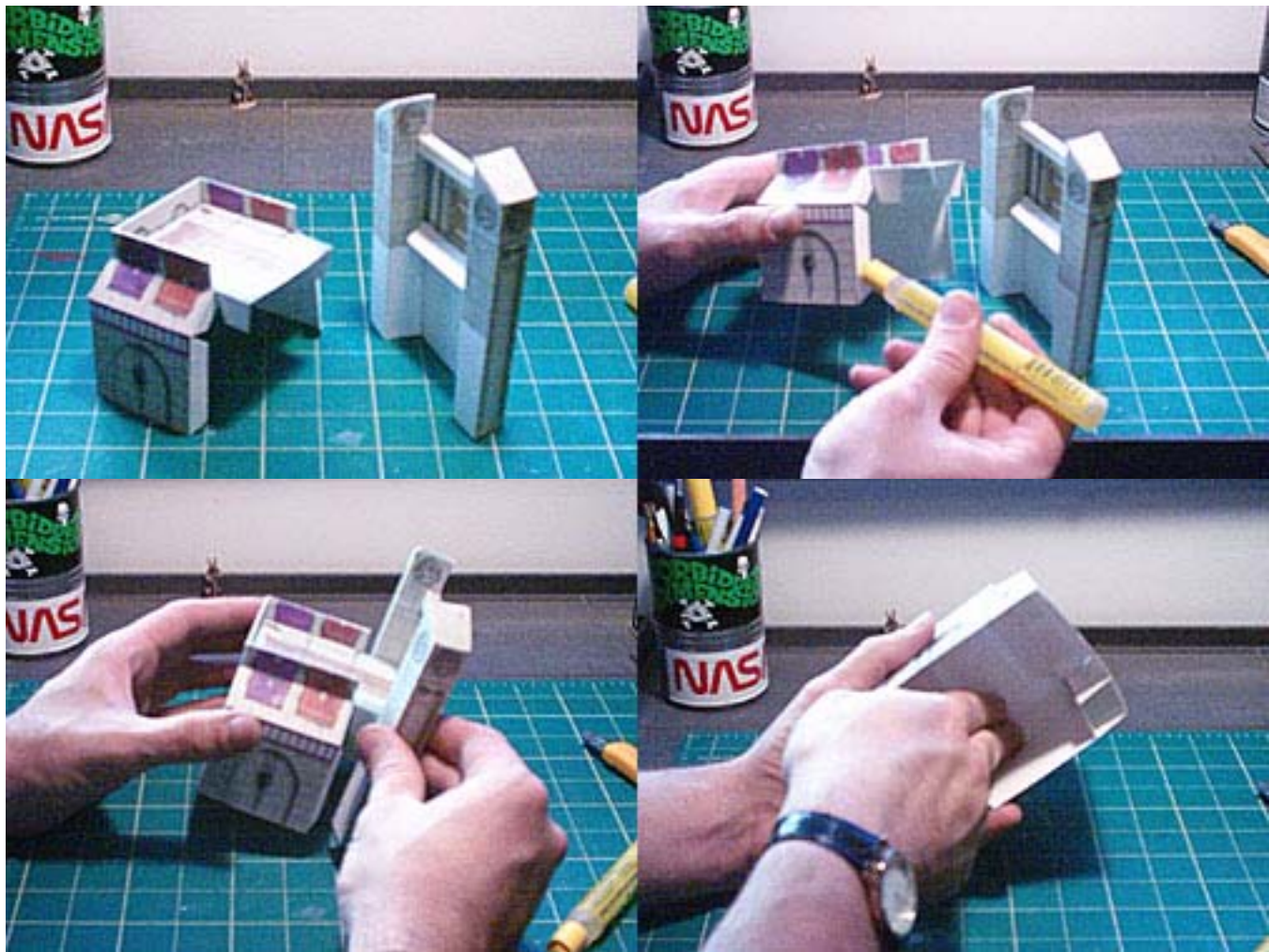
Cut and score the back. Apply glue to the area under the big flap with the door and fold it over the top. Align it so that you wind up with a lintel like the pictures below.



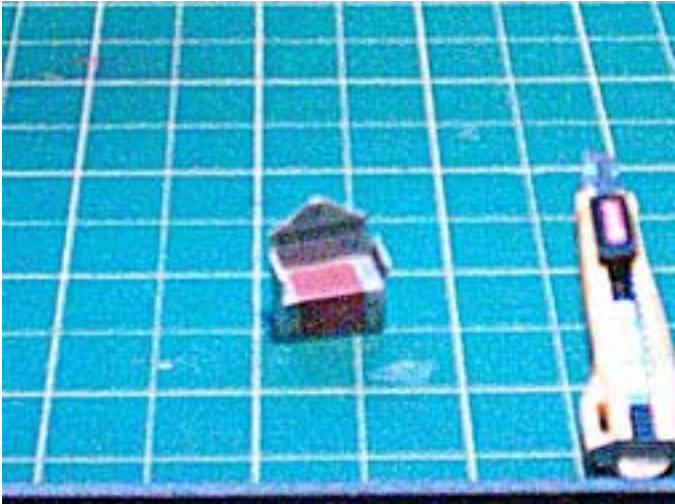
STEP 4:
 Apply glue to the long flaps on the side pillars and press the flat. Pop them back into a box shape and fold the flap over on the top. Glue down.



Step 4:
 To join the front and back, apply glue to all the tabs on the front section, and the big tab on the back below the door. Press everything together and let dry.



Imperial Throne



Step 1:

Cut and score as shown. Glue the back of the throne and fold it over, then glue the armrests and do the same. Finally glue the side tabs and tuck them in. Hold until dry. Cut out the curved area on the back if you like.

