

CASTLEWORKS™ ULTIMATE

Bringing it ALL Together

STEP 1: I'm Overwhelmed, What do I do First?

Lets start with the first thing you did and that was to purchase CastleWorks Ultimate! We **THANK YOU** for supporting us because without that support we couldn't do what we do. Thank you for supporting small business! You've just helped to fund another month of mad scientist design work in the WorldWorks Dungeons!

Now that you've purchased CWU you might be feeling a bit overwhelmed by the task at hand. Take heart, it's actually not as bad as you might think and once you get into the rhythm of things it can be quite enjoyable. Some even say it's addictive! One thing is for certain, once you commit to building you'll have a gargantuan castle in front of you before you know it. All it takes is an hour or two a night for a few days and things will add up quickly.



Denny Unger
OWNER/CREATOR
WORLDWORKS GAMES





MODULAR COURTYARD BUILDINGS



Lets start by designing our courtyard buildings & mainhouse.



WWW.CASTLEWORKS
ULTIMATETM
BRINGING IT ALL TOGETHER





MODULAR COURTYARD BUILDINGS

CASTLEWORKS
ULTIMATETM
BRINGING IT ALL TOGETHER



Build single and multi-story structures with ease! Each with fully detailed interiors. The design possibilities are limitless!

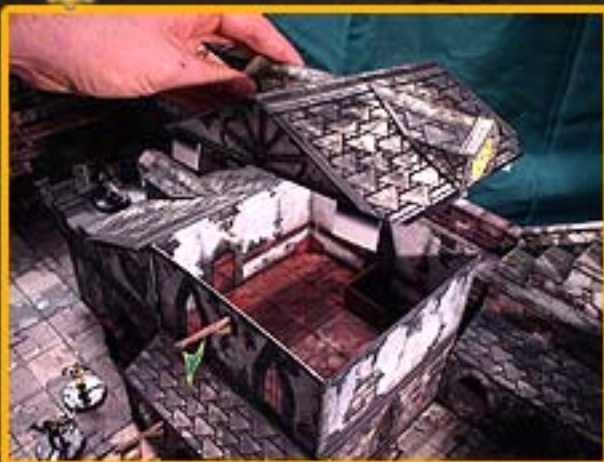
Swap and combine unique roofs designs.

Decorate with any number of windows and doors.

Add awnings, flags and signage.



Roofing can be removed for interior gameplay!



PAPER LINX™ SYSTEM



Secure and layout your ground tiles and walls using WorldWorks exclusive PaperLinX™ system. Comes in both 1-inch & 1.5-inch scales.

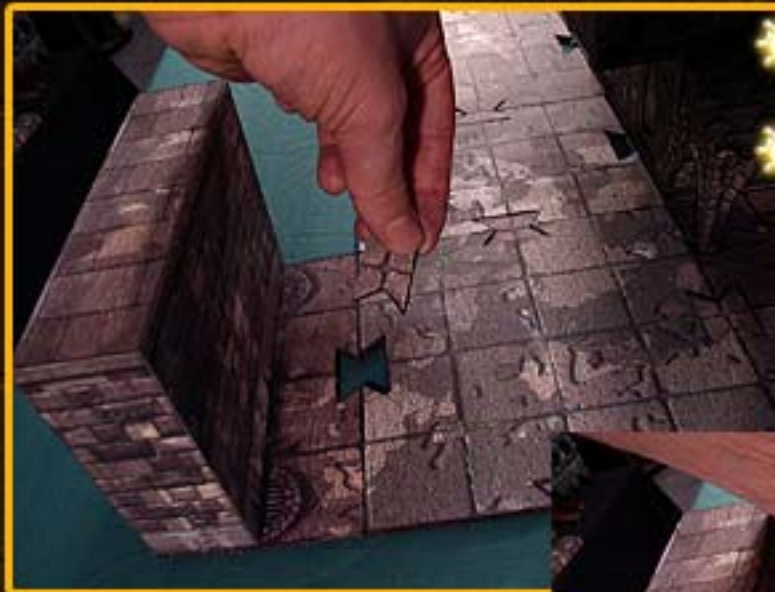
Classic Masterboard tiles are also included for users accustomed to that format.



PAPER LINXTM SYSTEM



WWW.CASTLEWORKS
ULTIMATETM
BRINGING IT ALL TOGETHER



Attach your castle wall sections using the PaperLinX tabs.

Choose between four wall styles to vary the look and feel of your castle.

- Plain Stone
- Plain Stone Stucco
- Ridged Stone
- Ridged Stone Stucco





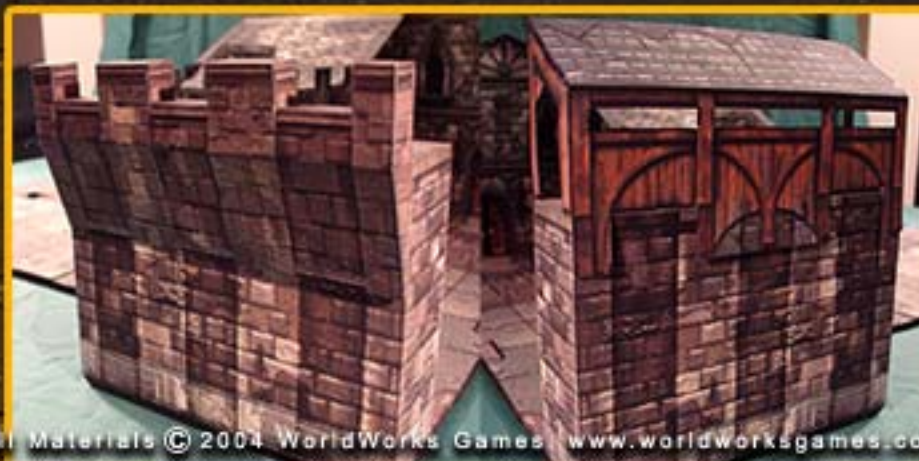
CRENELATIONS & HOARDINGS



Choose between 3 different crenelation skill levels. Simple, moderate & complex

Hotswap crenelation design allows you to change crenelations & hoardings on the fly. Simply drop them in the preslotted walls wherever you see fit!

CASTLEWORKS
ULTIMATE
BRINGING IT ALL TOGETHER





CATWALKS & LADDERS



WWW.CASTLEWORKS
ULTIMATE
BRINGING IT ALL TOGETHER

Combine CastleWorks Ultimate's unique catwalk and ladder design to...

Bridge corners

Widen ledges

Facilitate double or even triple high wall sections!





TOWERS & TOPPERS



- Choose between simple, quick-build towers or stackable multi-leveled tower designs.
- Build a tower of almost any height.
- Three unique level designs can be mixed and matched to create different looks.
- Removable floors and walls allow for access to fully detailed interiors and multi-level gameplay.

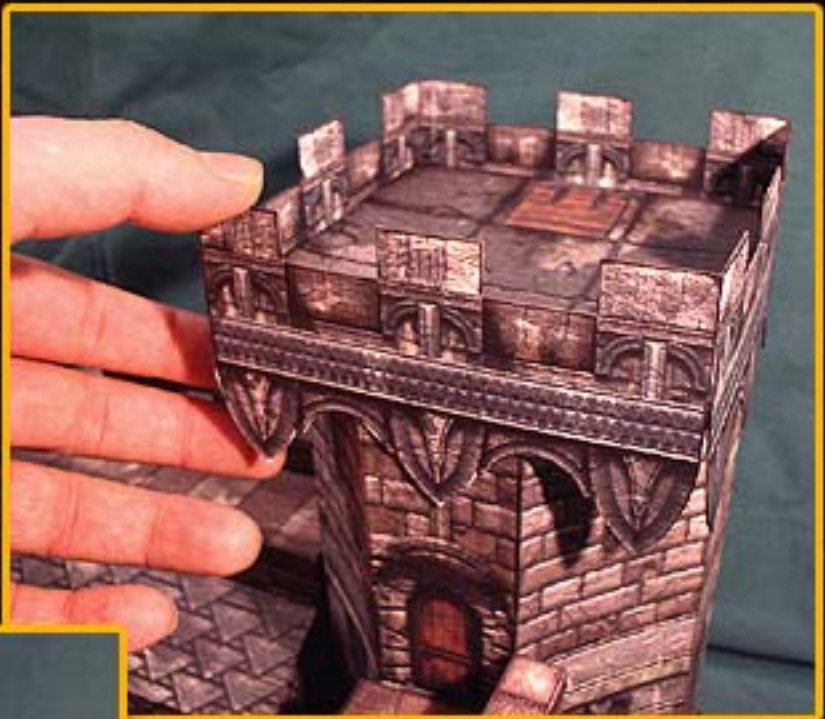


WWW.CASTLEWORKS
ULTIMATE[™]
BRINGING IT ALL TOGETHER



TOWERS & TOPPERS

- Three tower toppers of varying complexity and design create unique looks.
- Toppers can be rotated to match your desired angle.
- Mix and match toppers to create hybrid models.



STAIRS



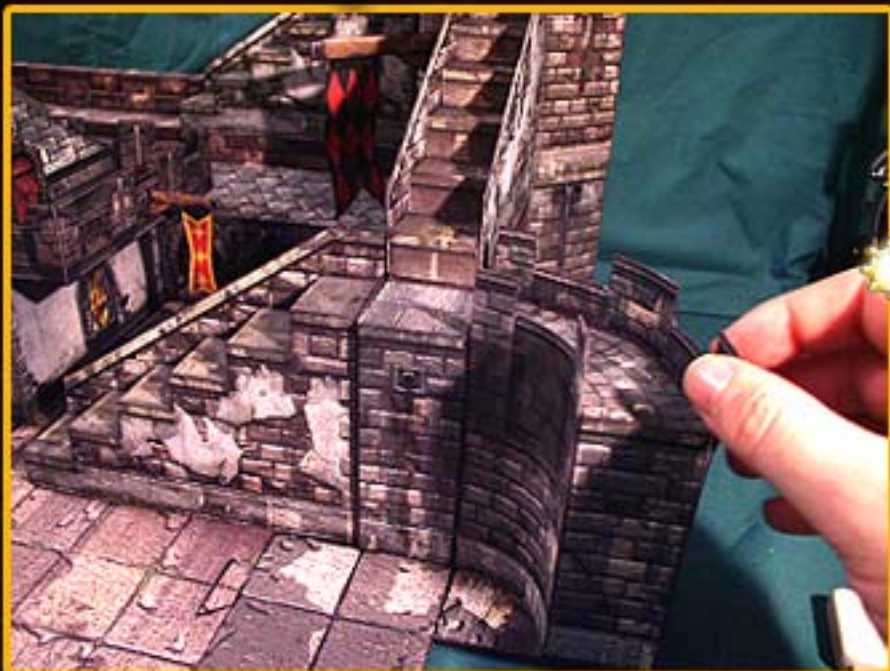
Stairs come in both left and right sweep configurations.

Perfect for base walls or reaching high tower sections.

WWW.CASTLEWORKS
ULTIMATETM
BRINGING IT ALL TOGETHER



CURVED WALL SECTIONS



Get creative with curved wall sections. Create a more organic and realistic flow in your castle designs.



**CASTLEWORKS
ULTIMATE™**
BRINGING IT ALL TOGETHER

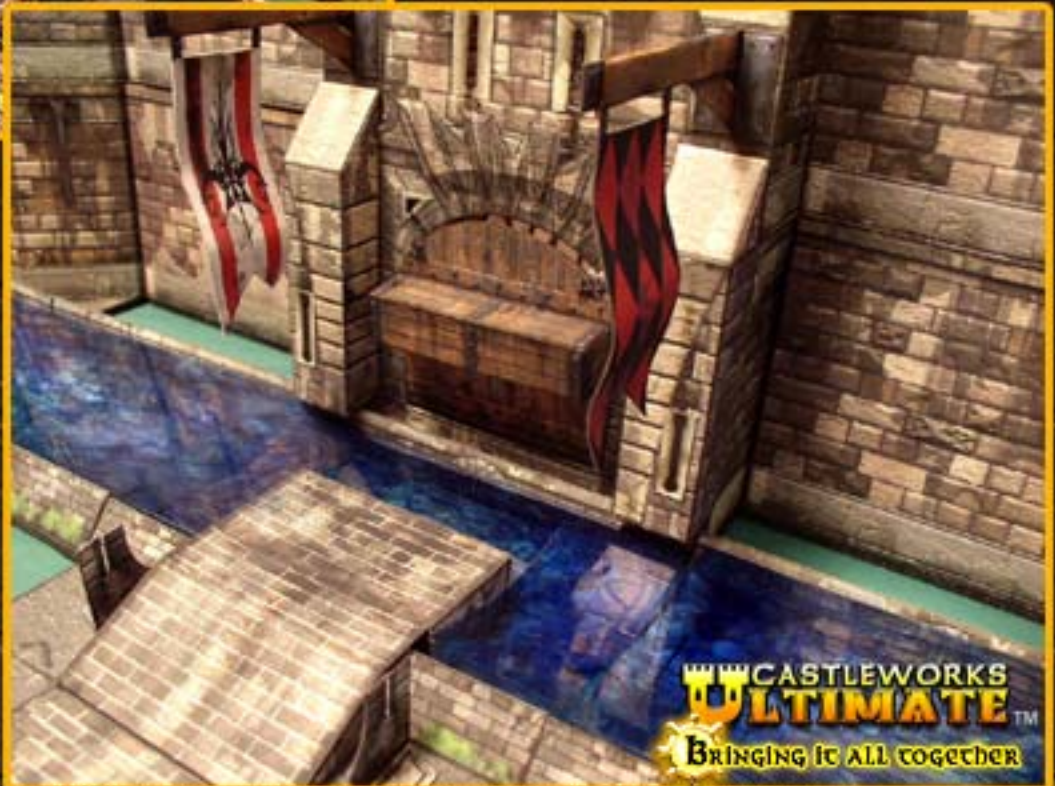
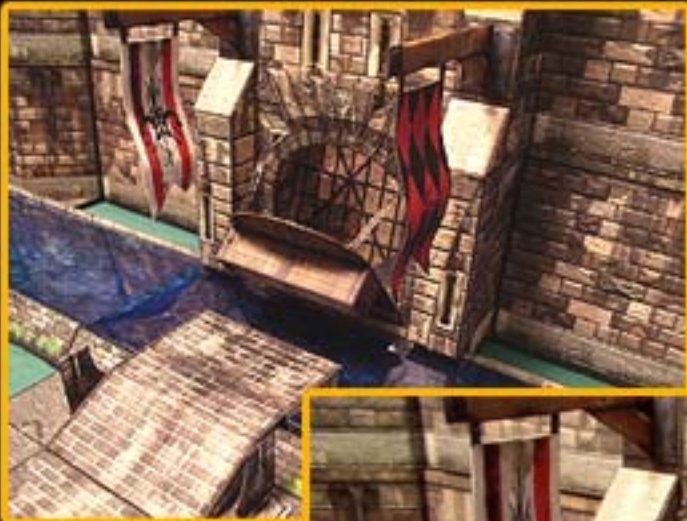
MOATS & GATEHOUSE



Surround your castle with modular moat sections. Drop in water transparencies to conceal underwater hazards.

FULLY FUNCTIONAL Gatehouse! Both the drawbridge and main gate can be cranked using a realistic chain and gear system.

Gatehouse also comes in an "easy" variant for those who don't want the frills.



CASTLEWORKS
ULTIMATETM
BRINGING IT ALL TOGETHER

Let's build!

So what are you waiting for? Now that you have the tools you can finally create your dream castle! Whether for the ultimate tabletop siege, an epic adventure or just for the pure fun of it, CastleWorks Ultimate is waiting for you!

CastleWorks Ultimate was a labor of love and without the support of the WorldWorks community, friends and family I couldn't have taken it this far. A BIG THANKYOU is dedicated to everyone who helped make this possible. Shouts go out to my wife for her unconditional support and sticking by me during my late night building session marathons (I'll take you out to dinner), my family for always believing in me and putting up with my absence, Andorax for helping me with quality control, Janx for spreading the word, the WorldWorks forum community (possibly the nicest and most supportive group of people on-line), Paul, Rodney, George, Kat, Steve, James and Mel for sharing a dream, **and to all of you who paid for this product!**

Thanks again for your support and please don't forget to spread the word about Worldworks Games. We want to continue providing gamers with high quality terrain products at a price that won't break the bank but we need your support to continue.

Talk to you at the next release ;)

