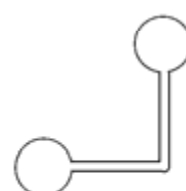
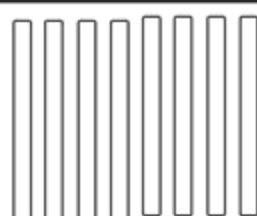


FUTURE
ARRIADA



VENTURE

MAPS



Introduction	1
THE VENTURE	2
Command Pod (docked)	3
Port Forward Section.....	4
Central Section	5
Starboard Forward Section	6
Engineering	7
Port Modules	8
Port Cargo Bay	9
Port Flight Deck.....	10
Port Passenger Module.....	11
Starboard Modules	12
Starboard Cargo Bay.....	13
Starboard Flight Deck.....	14
Starboard Passenger Module.....	15
Command Pod (detached)	16

Introduction

The Venture is a single-level craft and the map is divided into sections by port (left), center, and starboard (right) as well as fore and aft. There are two maps for the command pod – one attached to the main hull and one flying solo.

The map of the command pod attached to the main hull overlaps the other maps so as to show the whole command pod on a single page. That page can be cut to fit end-to-end with the main hull map if desired. The forward section maps also overlap, though to a lesser extent. This is to allow for more complete rooms on a given page, and also to help offset printer limitations. Again, trim the printed pages if desired.

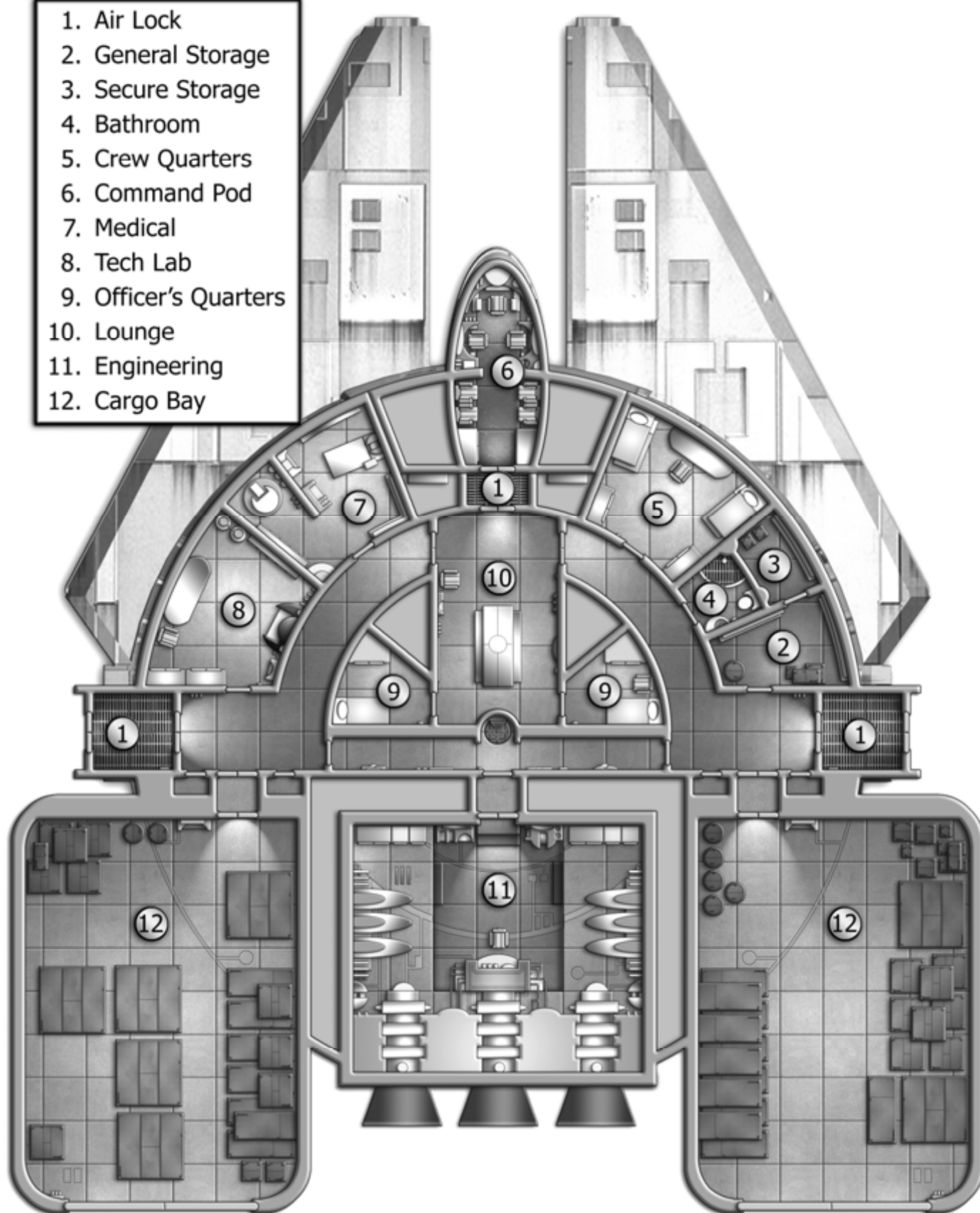
The tactical maps in this document are designed for use with miniatures; the squares represent 5ft (or 2m) spaces and the areas are laid out so that the pages can be cut and then put down edge-to-edge as needed.

Note that the squares shown on the floor are not necessarily meant to be physically present in the environments depicted. It's just artistic license (trying to make things look a bit more interesting).

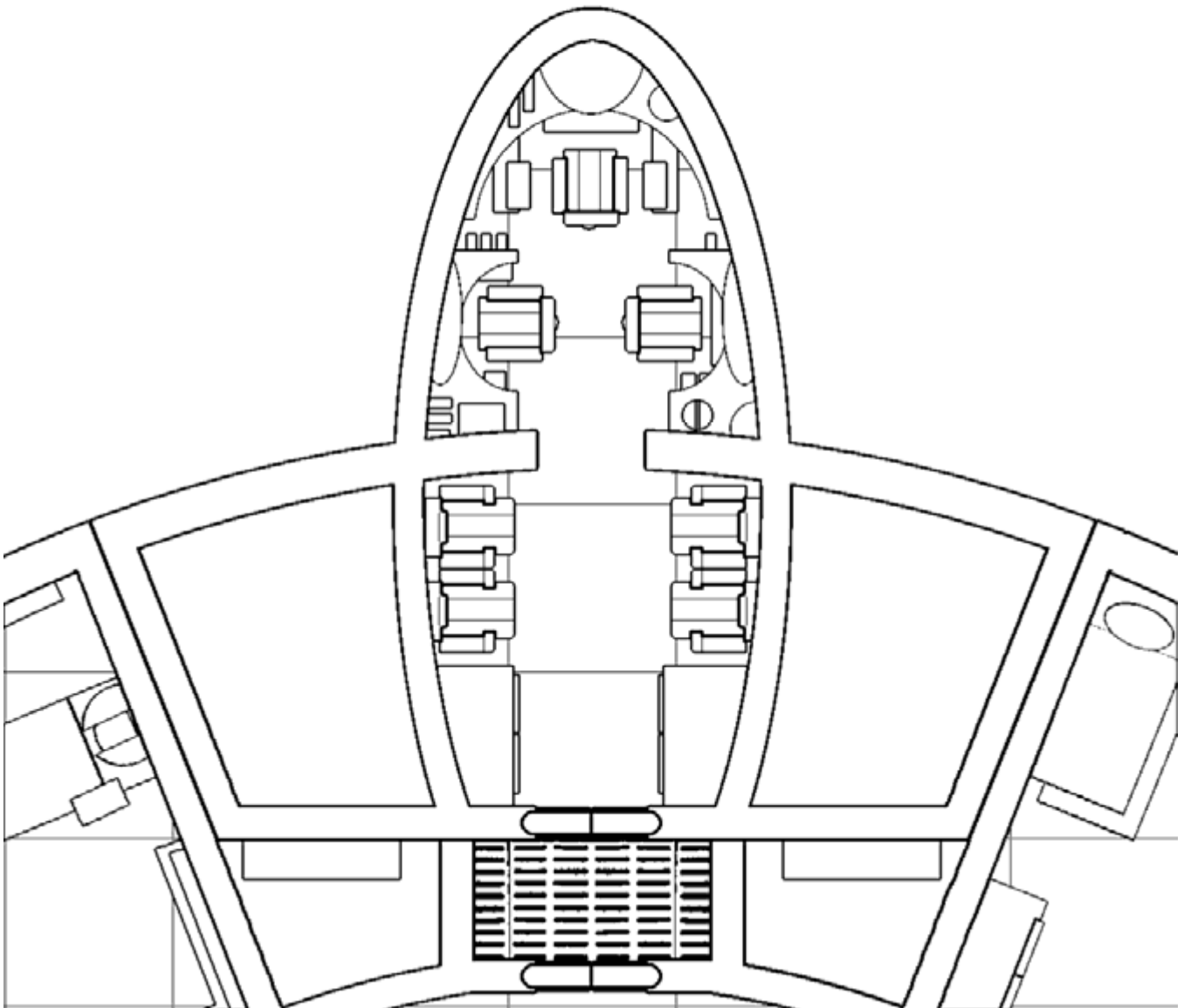
This document was created in its entirety by Ryan Wolfe, © 2005. Permission is given to reproduce these maps for personal, non-profit, use.

The VENTURE

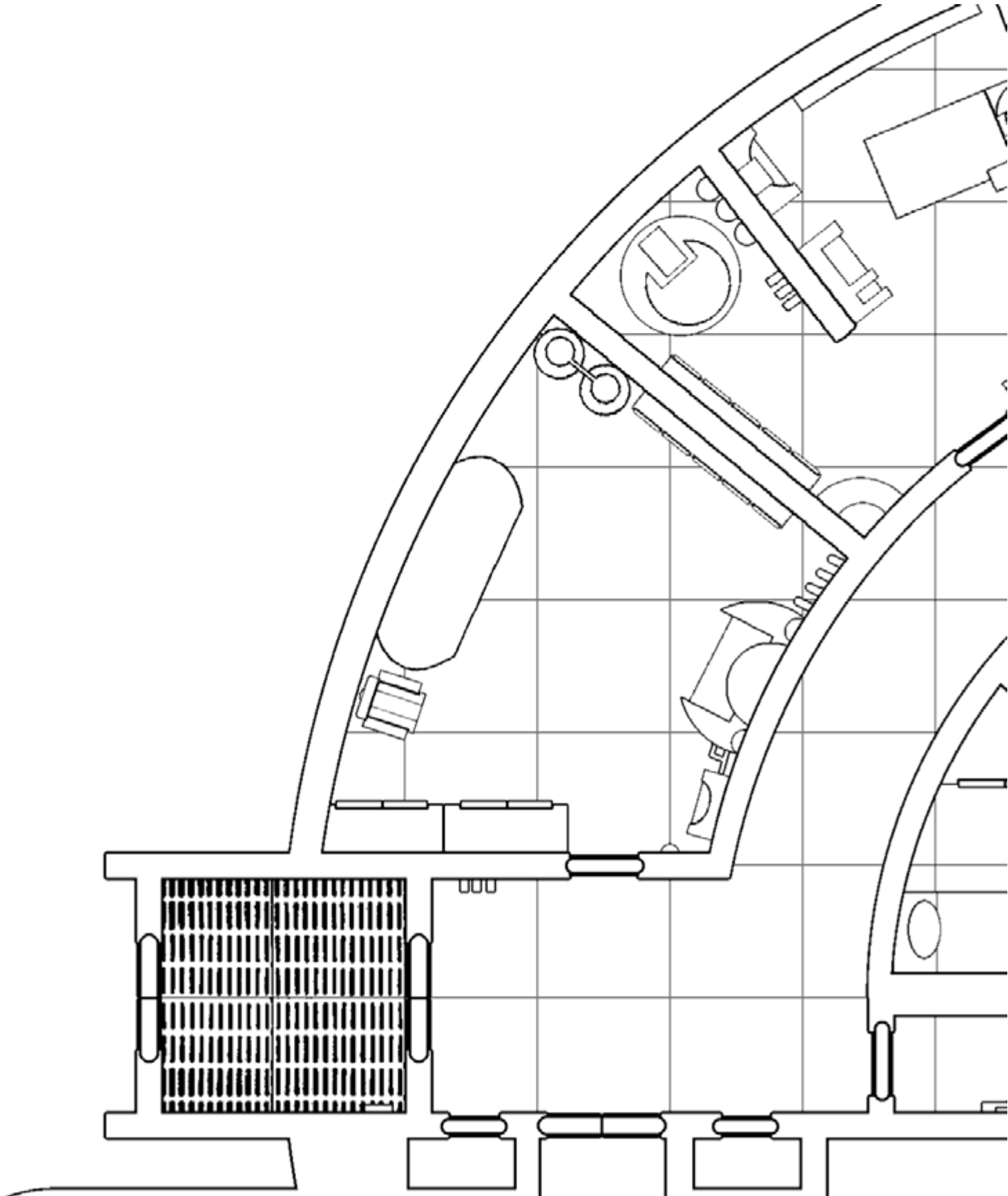
1. Air Lock
2. General Storage
3. Secure Storage
4. Bathroom
5. Crew Quarters
6. Command Pod
7. Medical
8. Tech Lab
9. Officer's Quarters
10. Lounge
11. Engineering
12. Cargo Bay



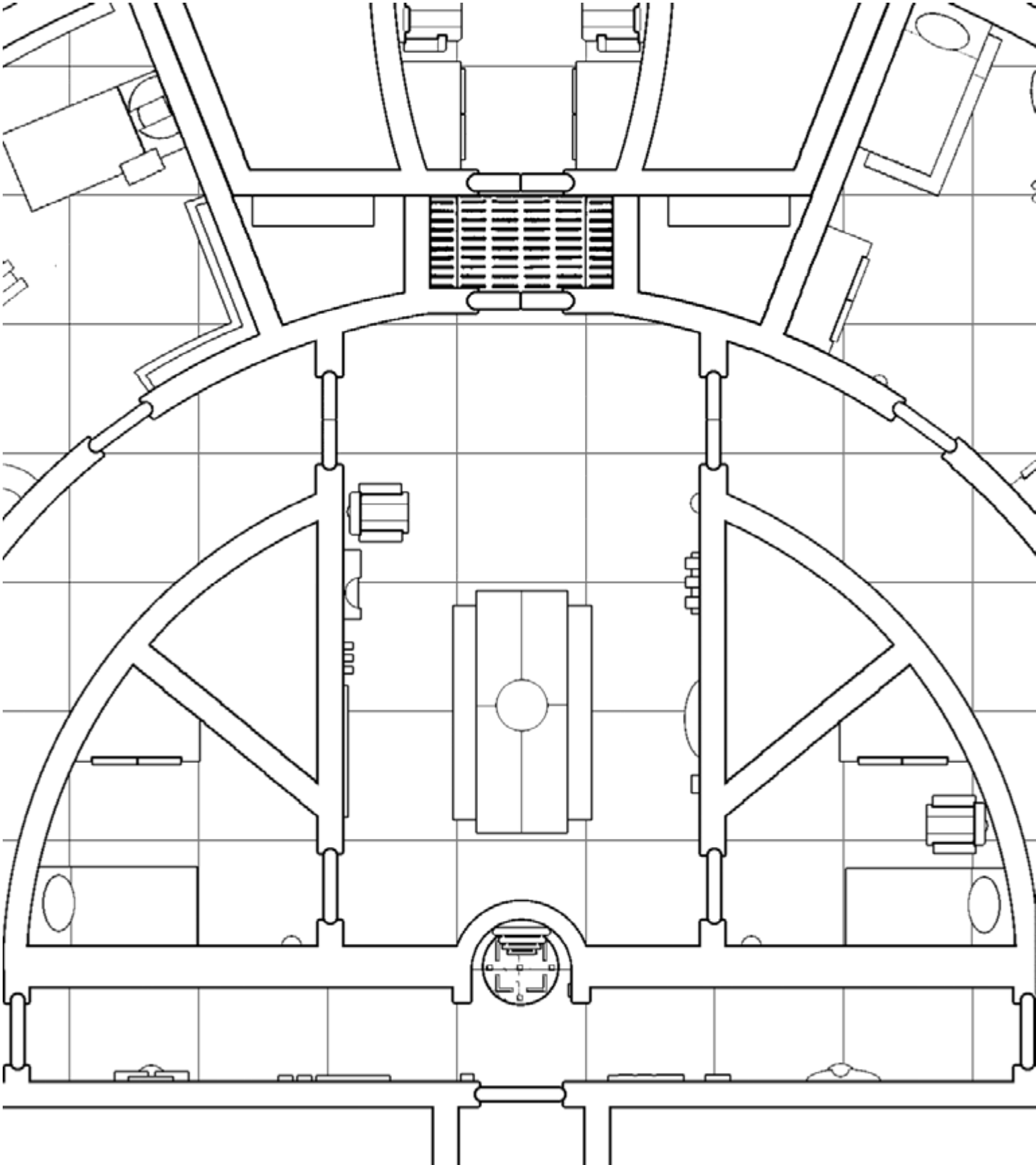
Command Pod (docked)



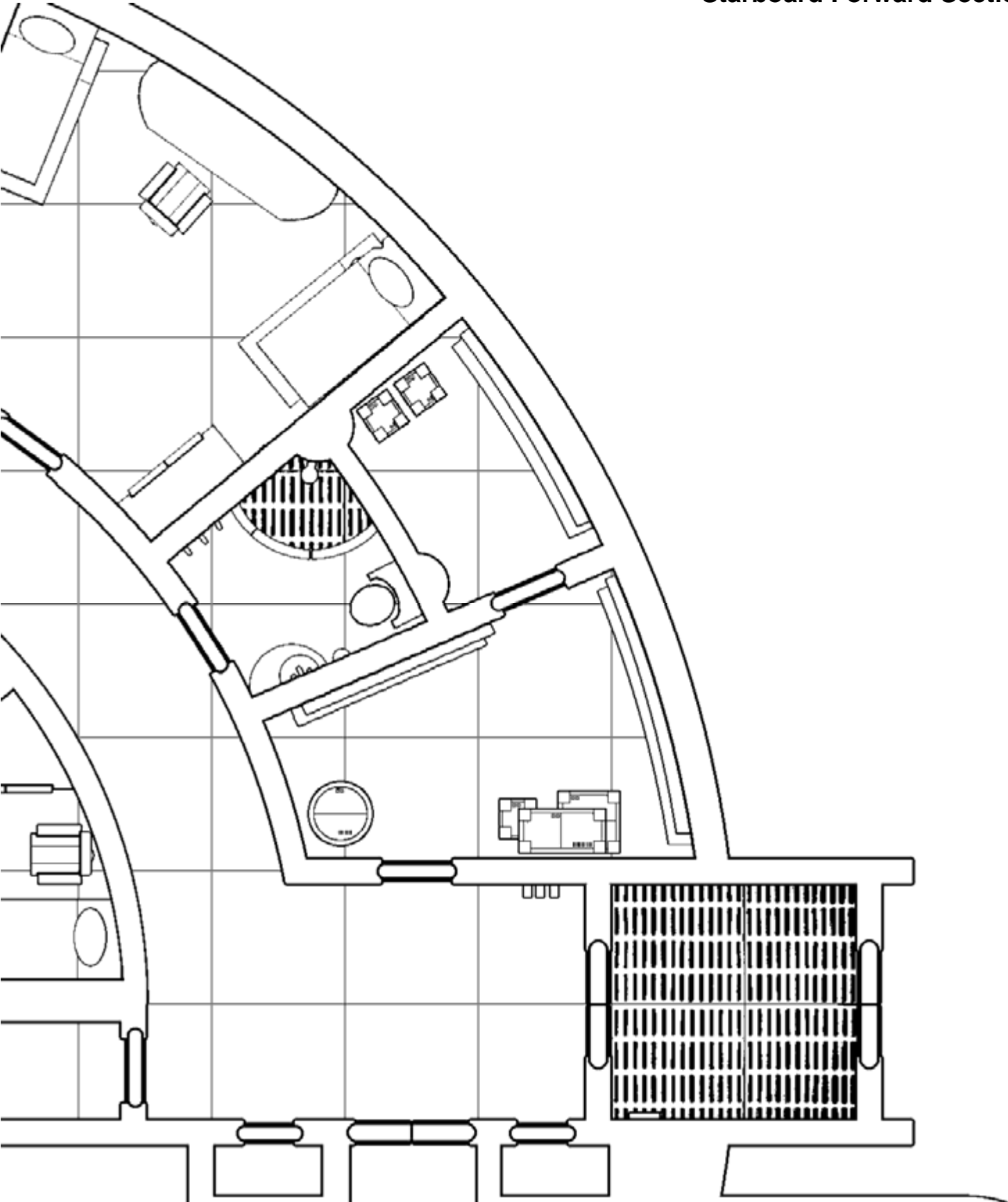
Port Forward Section

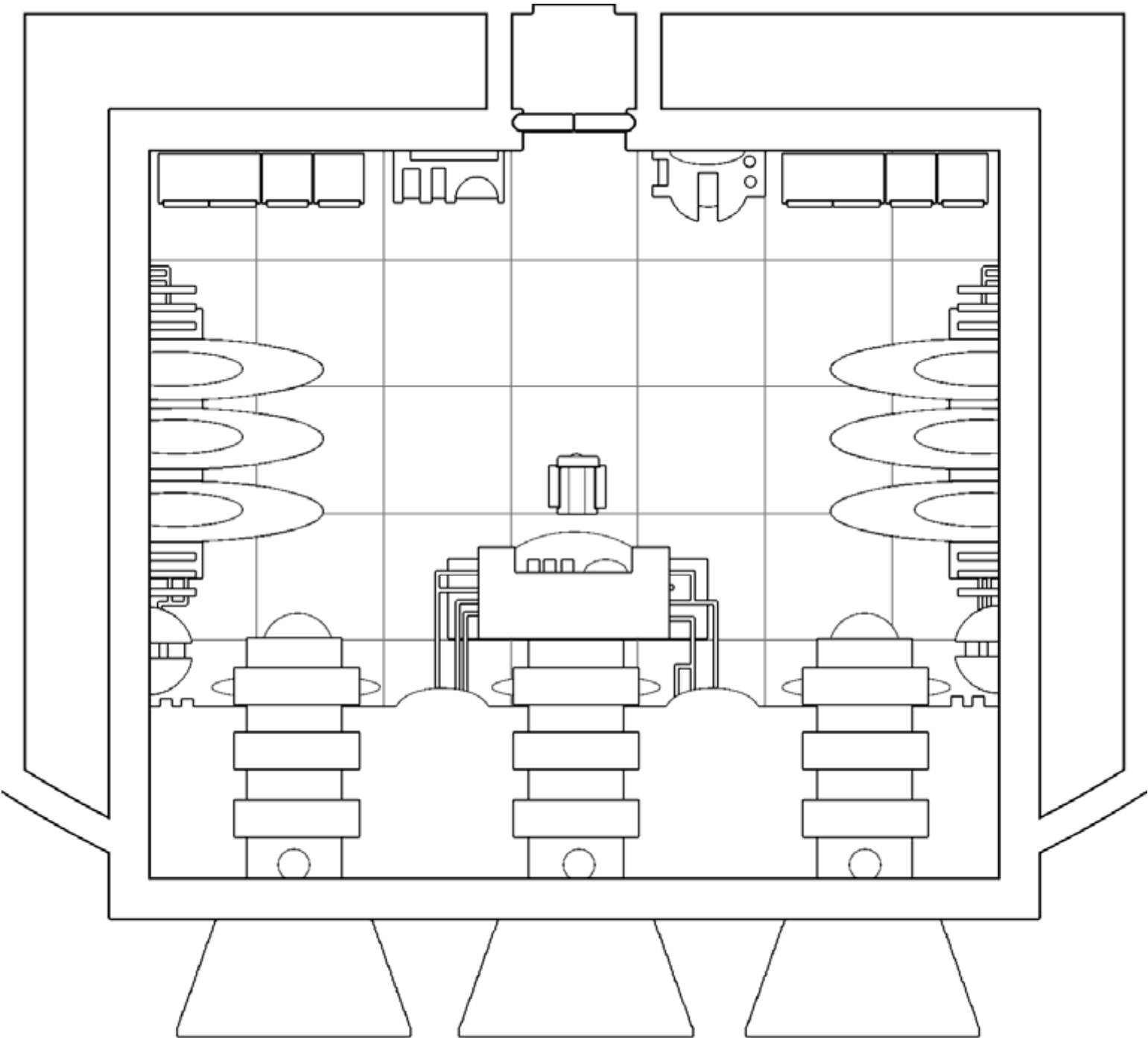


Central Section



Starboard Forward Section





Port Modules

The following three pages contain map sections usable for the Port Aft Section of the ship. Note that the Venture can only have one of the following three modules installed at any given time. The starboard module does not have to be of the same type.

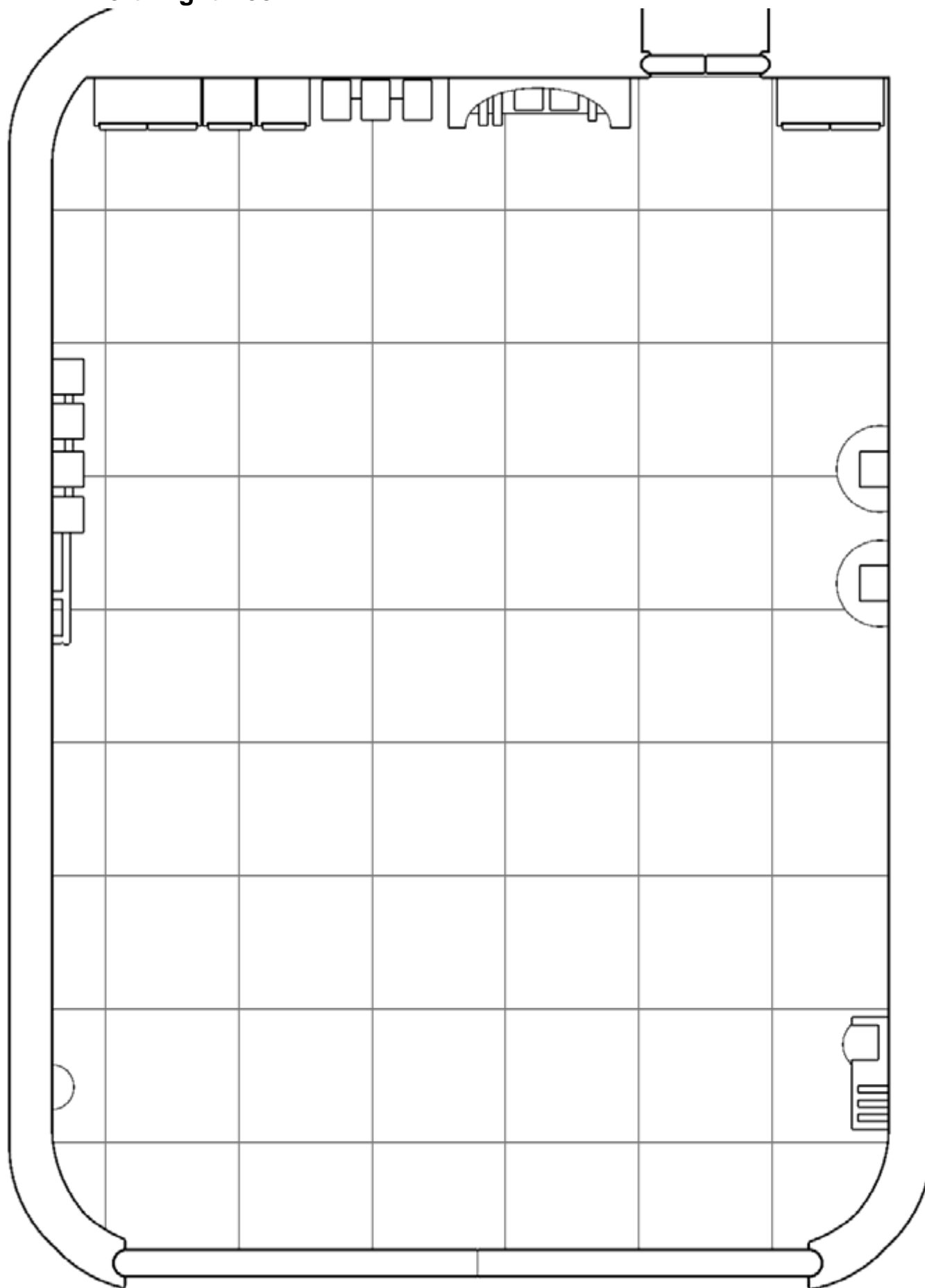
The modules, in order, are:

- Cargo Bay
- Flight Deck
- Passenger Module

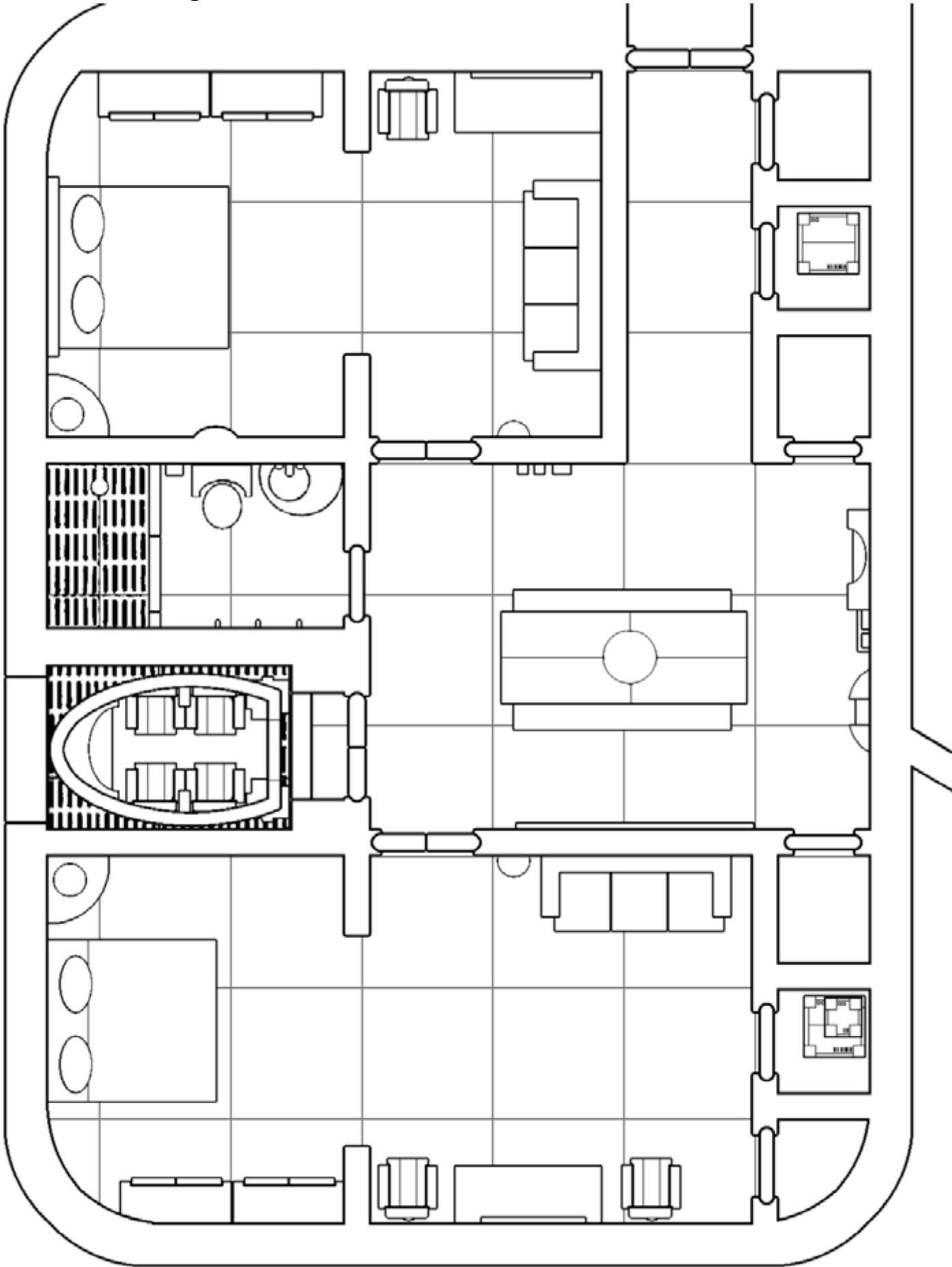
Port Cargo Bay



Port Flight Deck



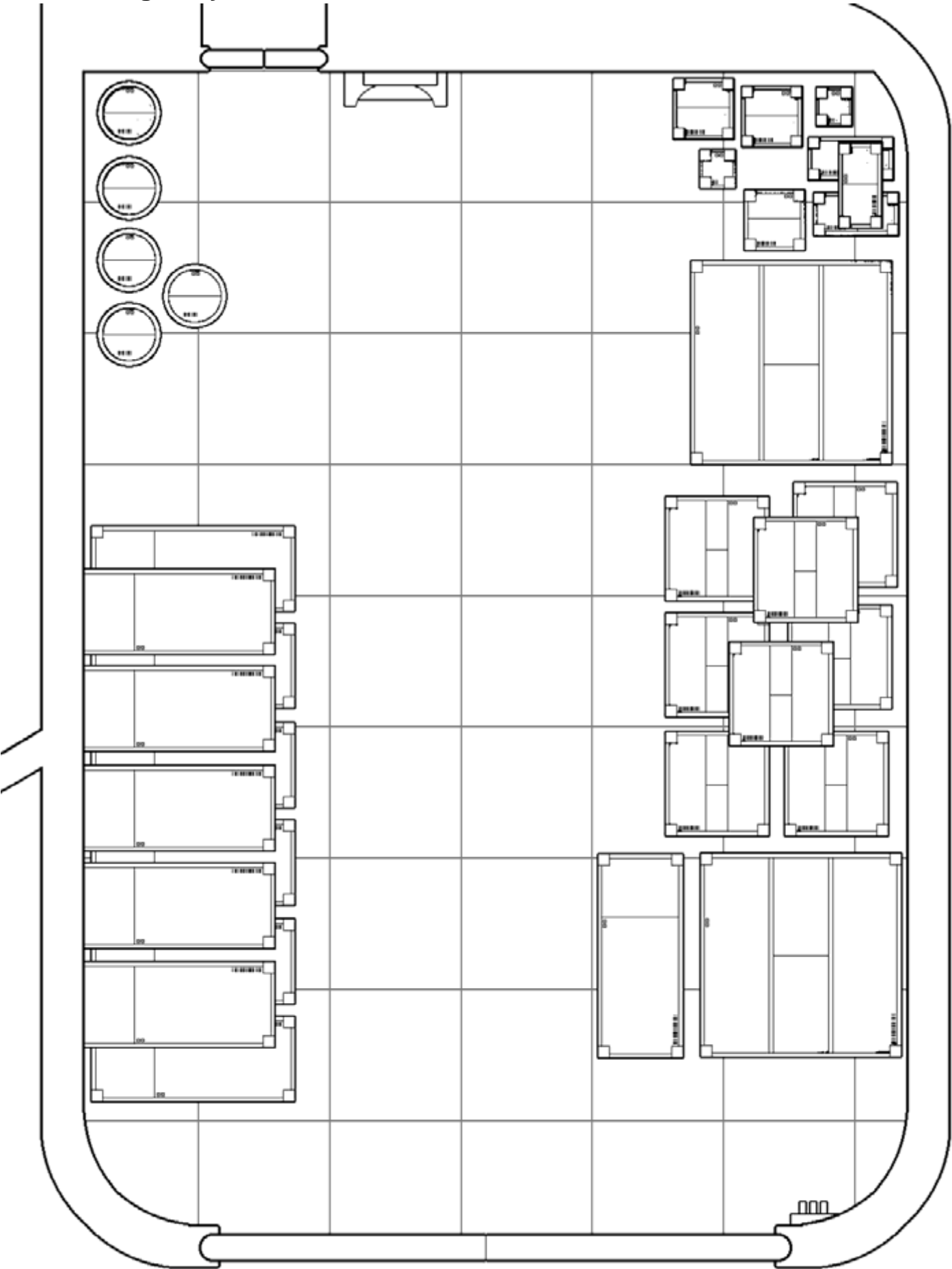
Port Passenger Module



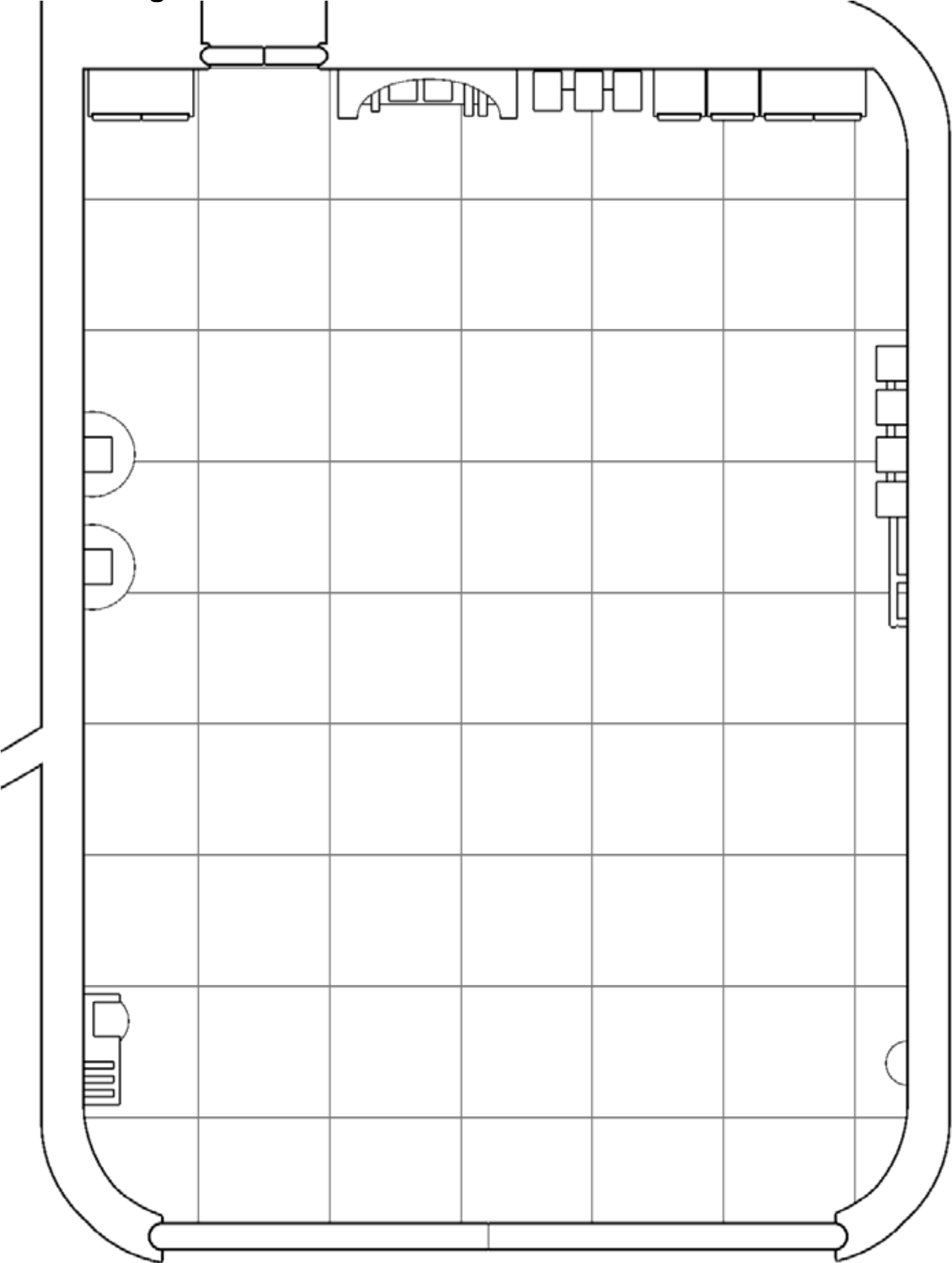
Starboard Modules

The following three pages contain map sections usable for the Starboard Aft Section of the ship.

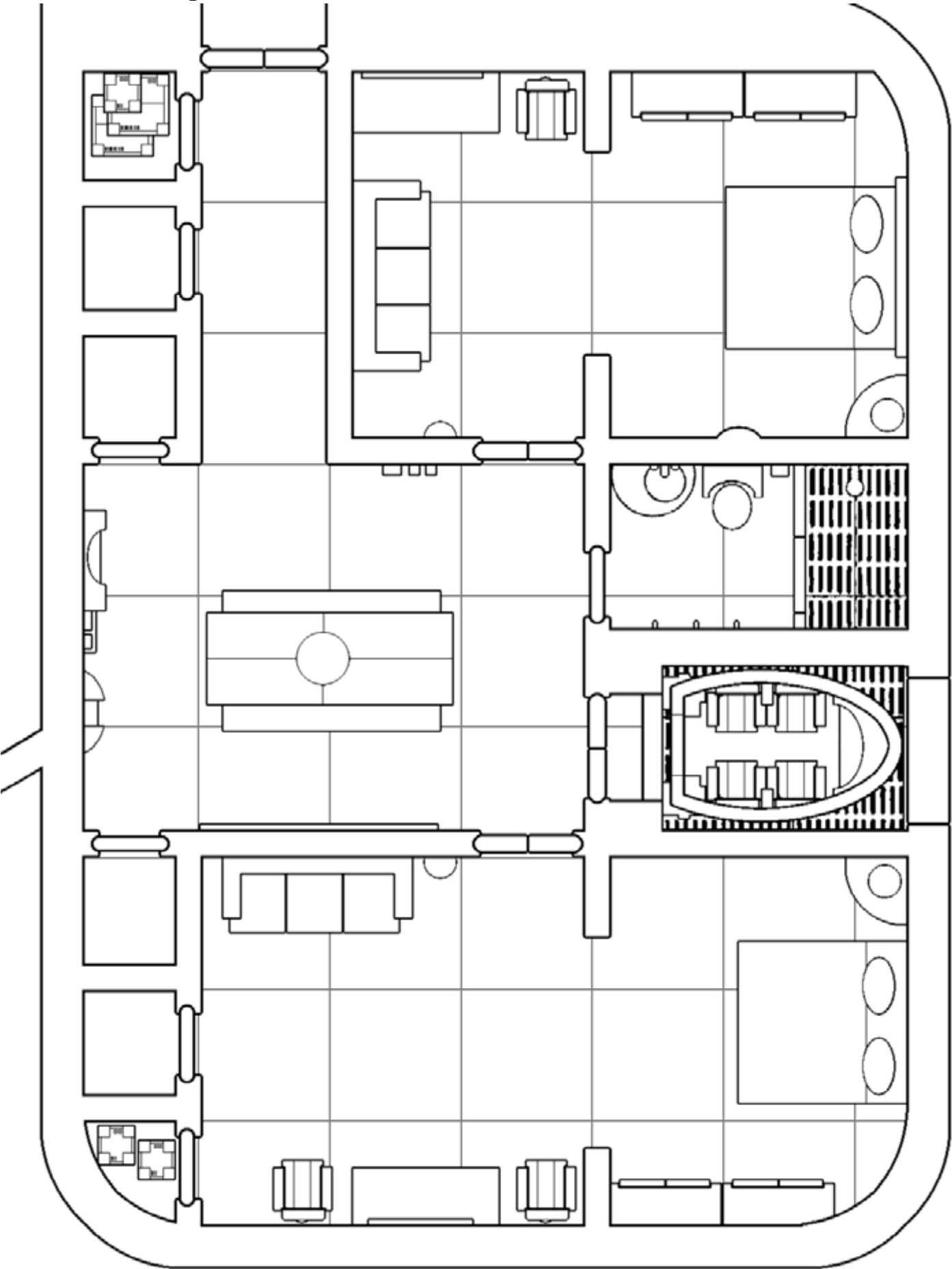
Starboard Cargo Bay



Starboard Flight Deck



Starboard Passenger Module



Command Pod (detached)

