

**Jo Lynn ..... 1**  
    Bridge and Operations Center.....3  
    Port Side.....4  
    Central Section.....5  
    Starboard Side .....6  
    Aft Cargo Bay Balcony .....7  
    Auxiliary Cargo Bay ("the Basement").....8  
    Galley .....9  
    Aft Cargo Bay .....10  
    Engine Room.....11

**Gunboat Configuration ..... 12**  
    Gunboat - Port.....13  
    Gunboat - Central.....14  
    Gunboat - Starboard.....15

**Jo Lynn**

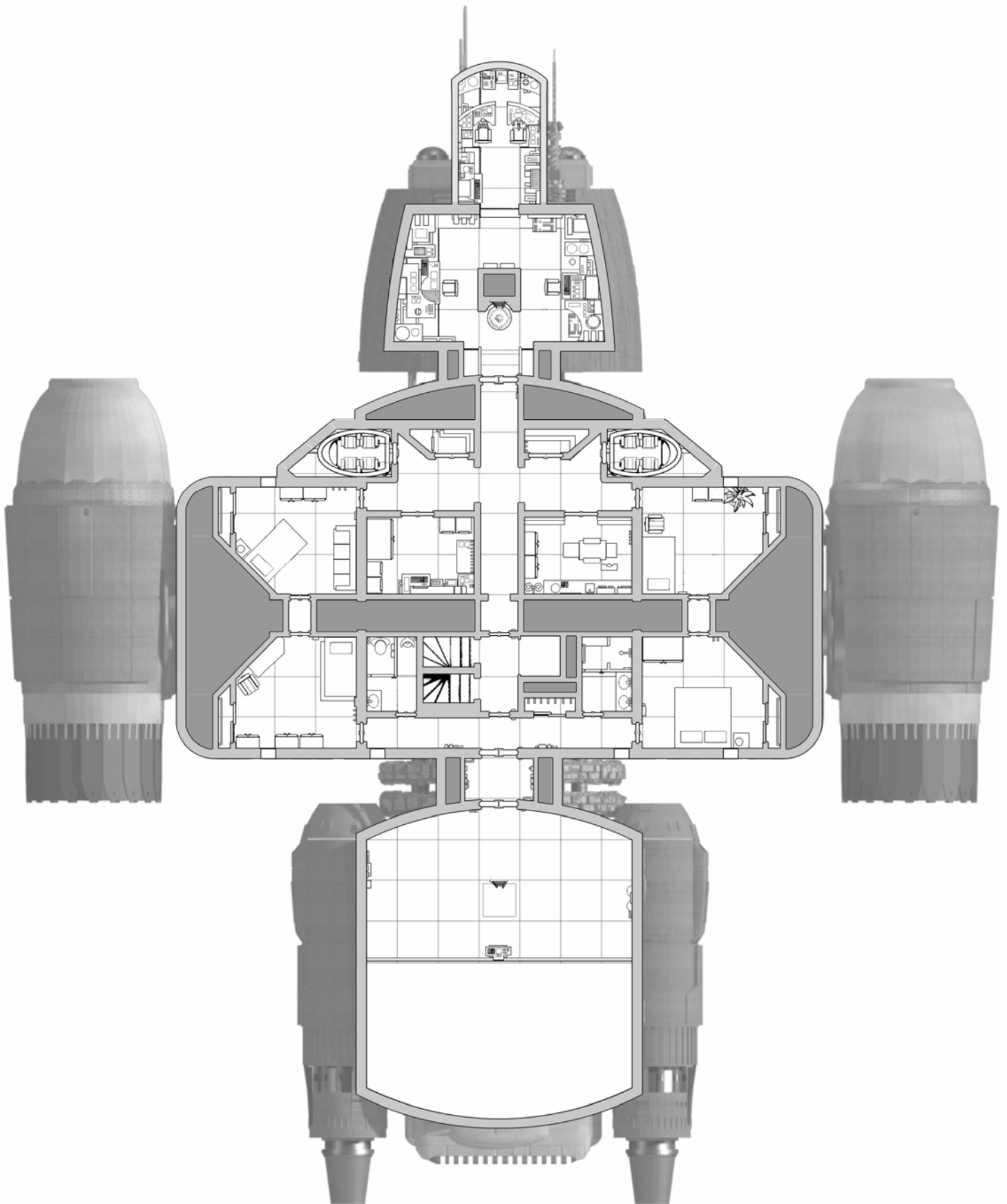
The Jo Lynn consists of a main level comprised of the Bridge, Port, Central, and Side sections, plus the Aft Cargo Bay Balcony. The Central Section of the ship has the Auxiliary Cargo Bay (the "Basement") underneath it and the Galley above it. The Aft Cargo Bay Balcony has the Aft Cargo Bay beneath it and the Engine Room above it.

The tactical maps in this document are designed for use with miniatures; the squares represent 5ft (or 2m) spaces and the areas are laid out so that the pages can be cut and then put down edge-to-edge as needed. Note that there is substantial overlap on the maps to facilitate taping. If the pages are going to be put down exactly edge to edge, then this overlap should be trimmed accordingly.

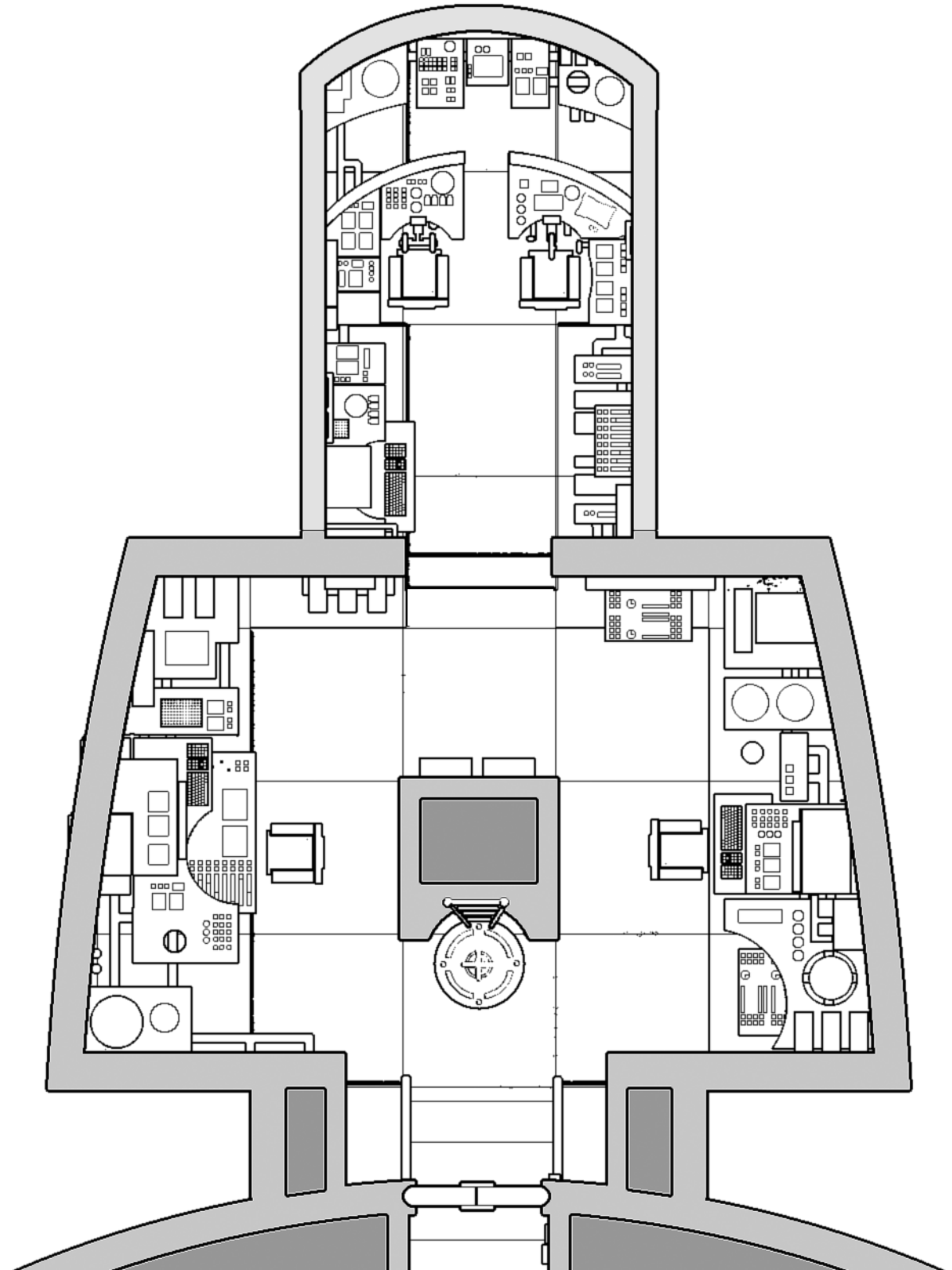
The complete map for the Jo Lynn is presented. After that, the port, center, and starboard sections of the Gunboat configuration are given (all other areas of the map can be used as-is).

This document was created in its entirety by Ryan Wolfe, © 2005. Permission is given to reproduce these maps for personal, non-profit, use.

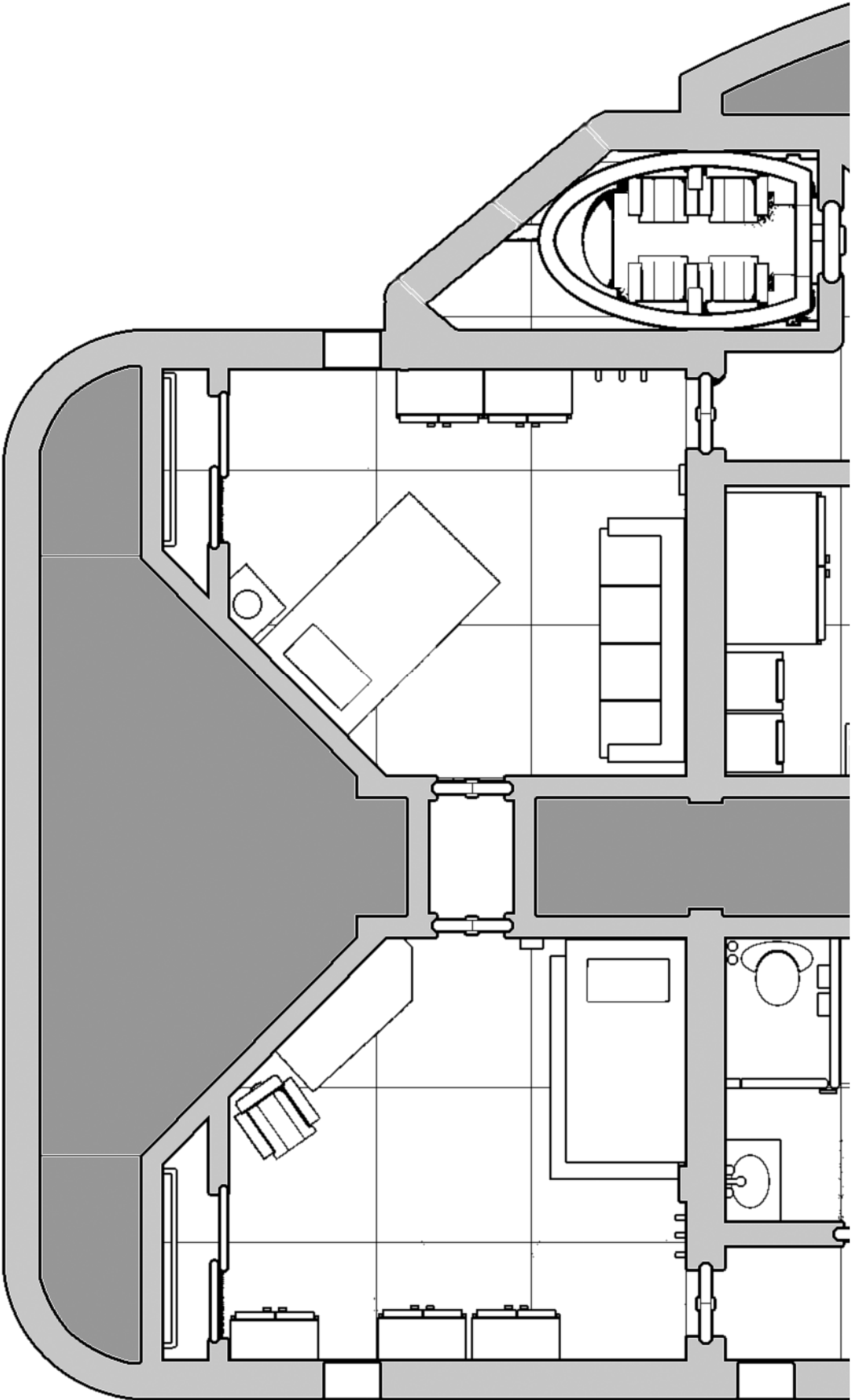
Jo Lynn



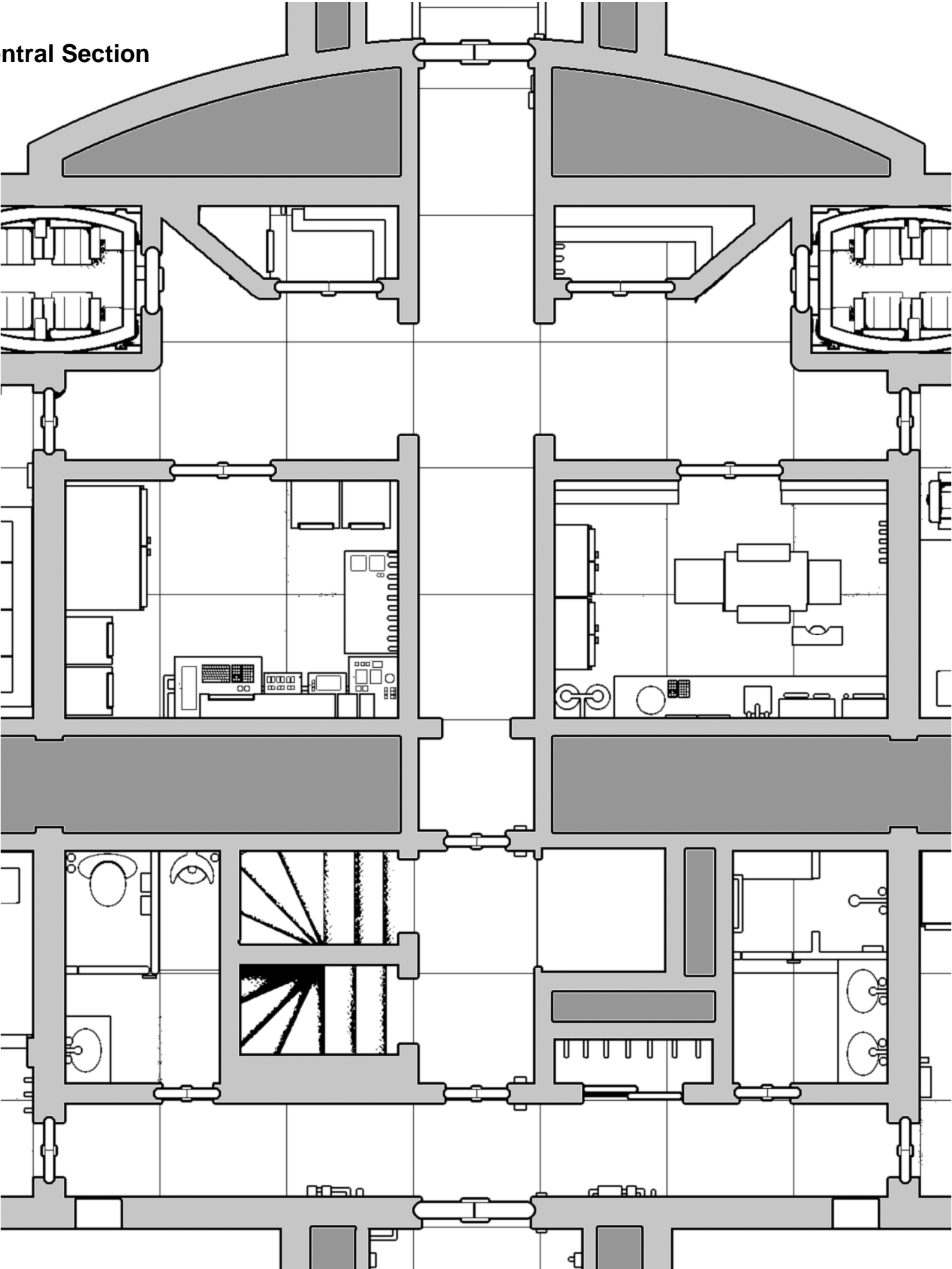
## Bridge and Operations Center



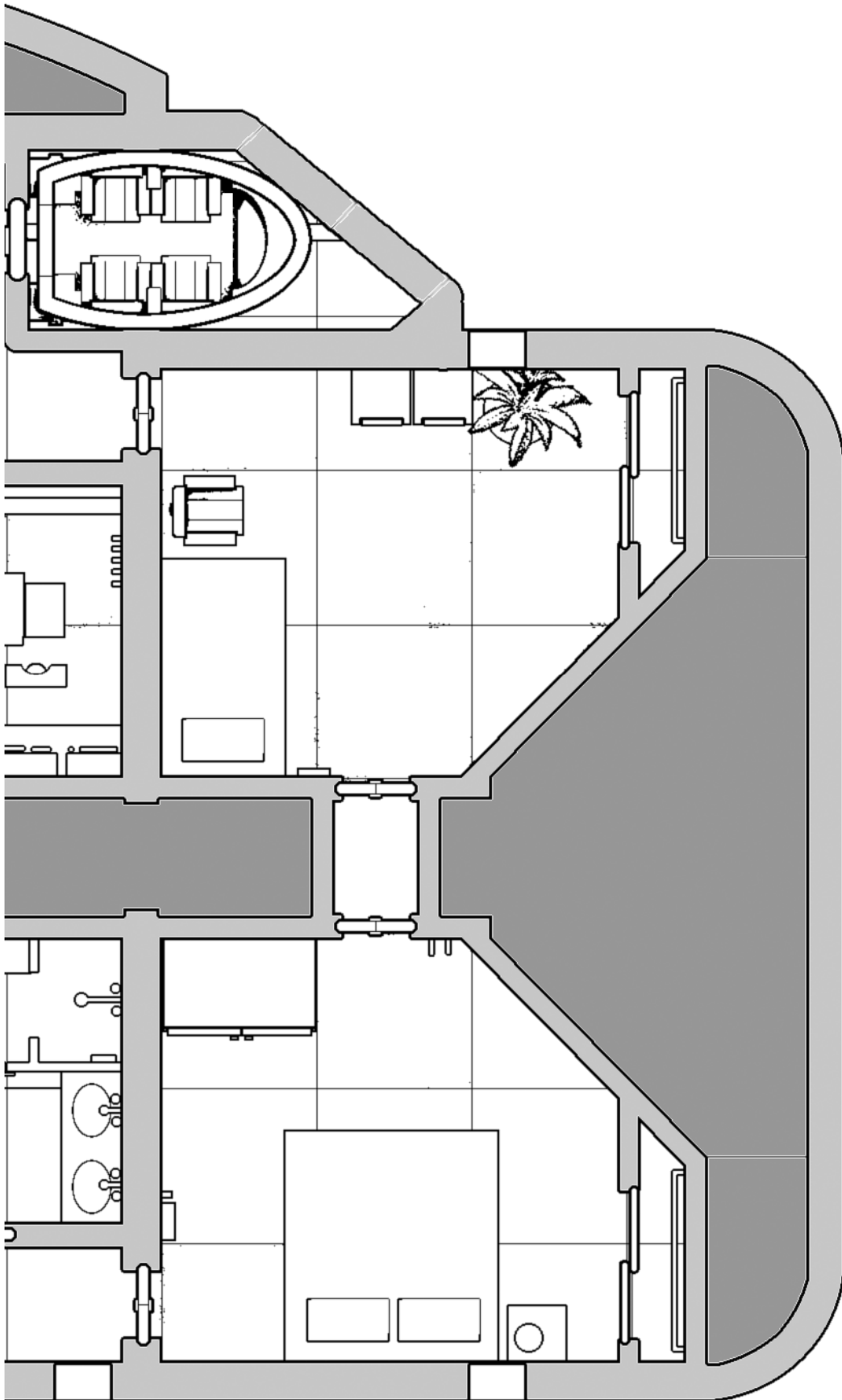
Port Side



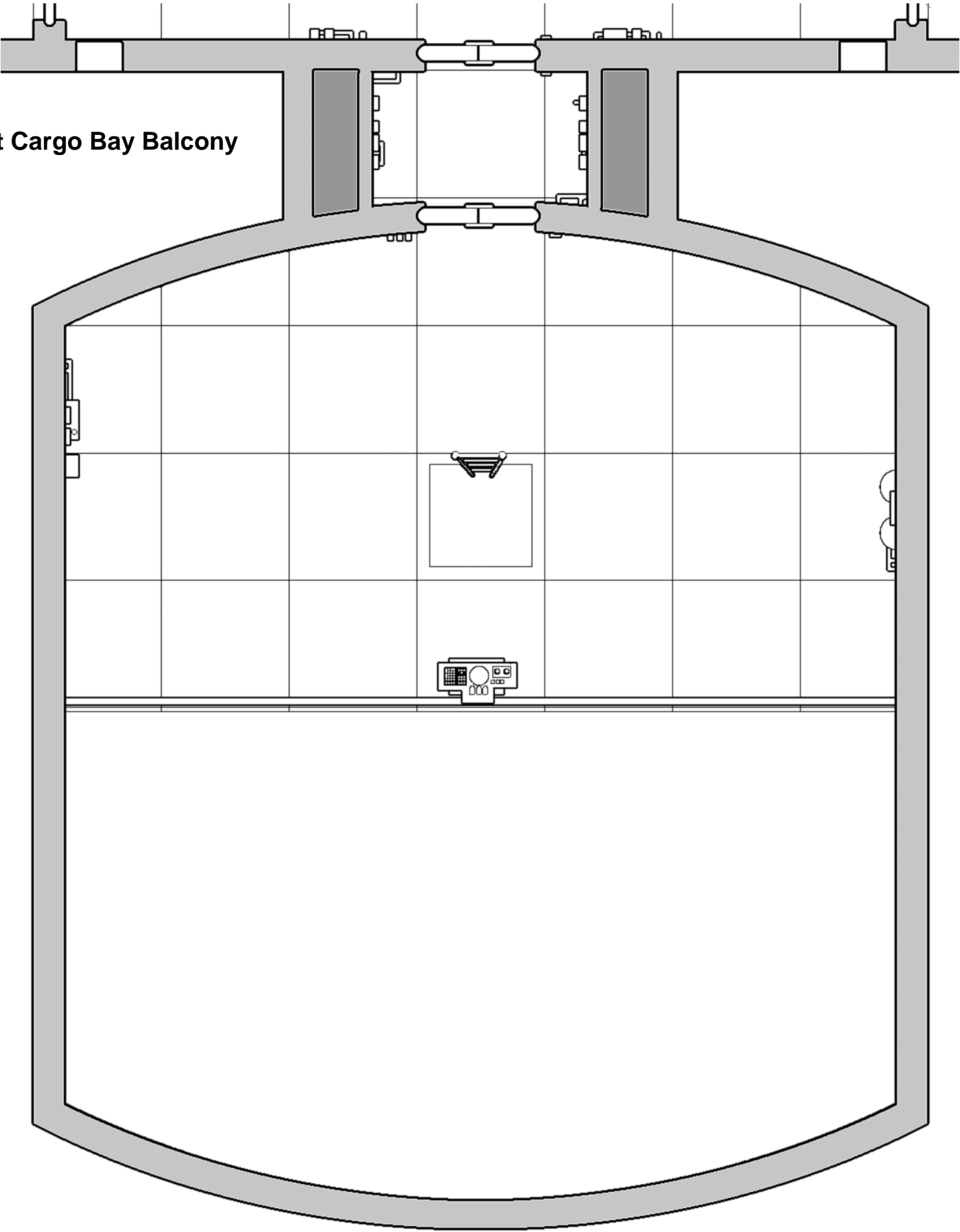
Central Section



## Starboard Side

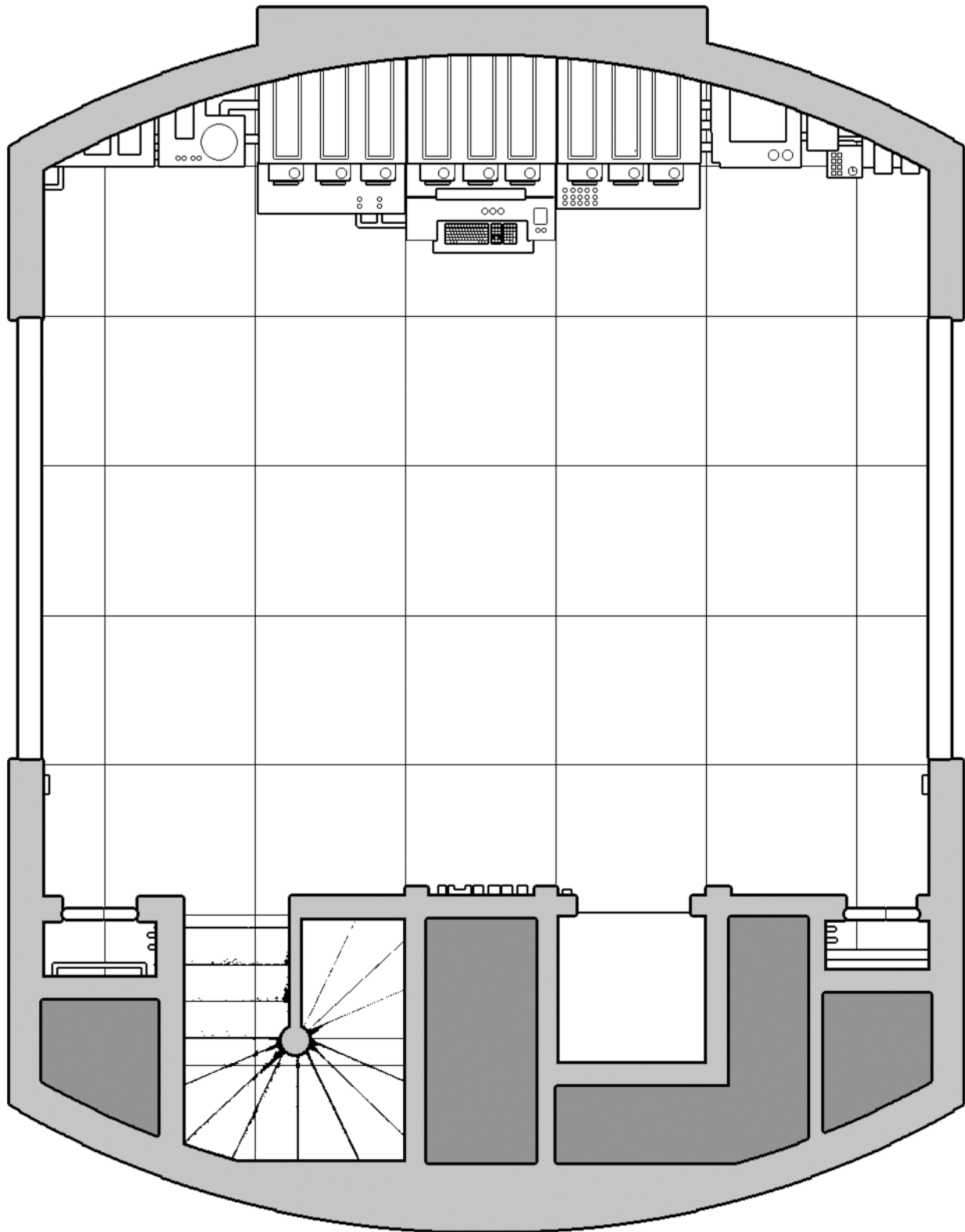


**Aft Cargo Bay Balcony**

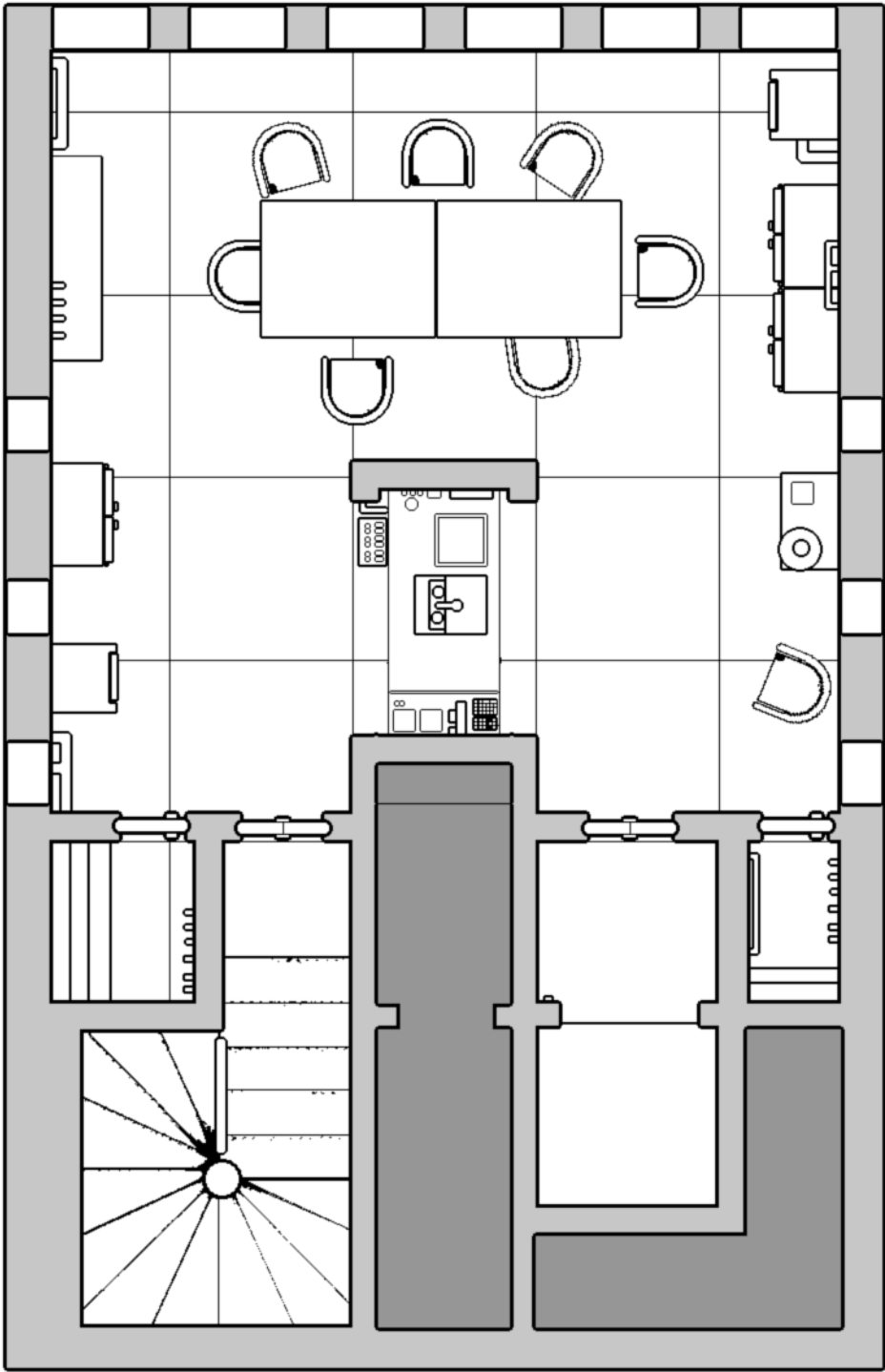




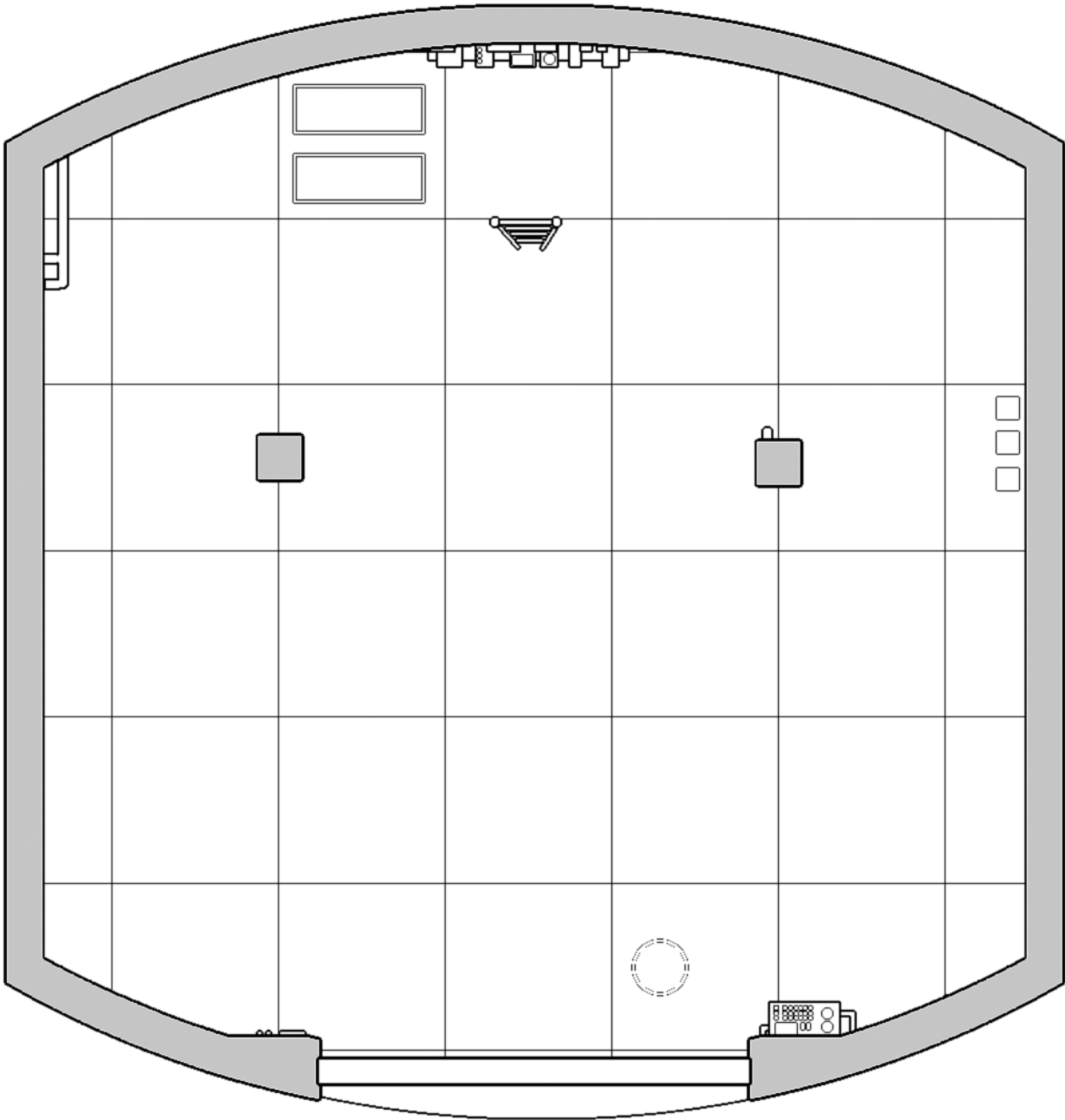
## Auxiliary Cargo Bay (“the Basement”)



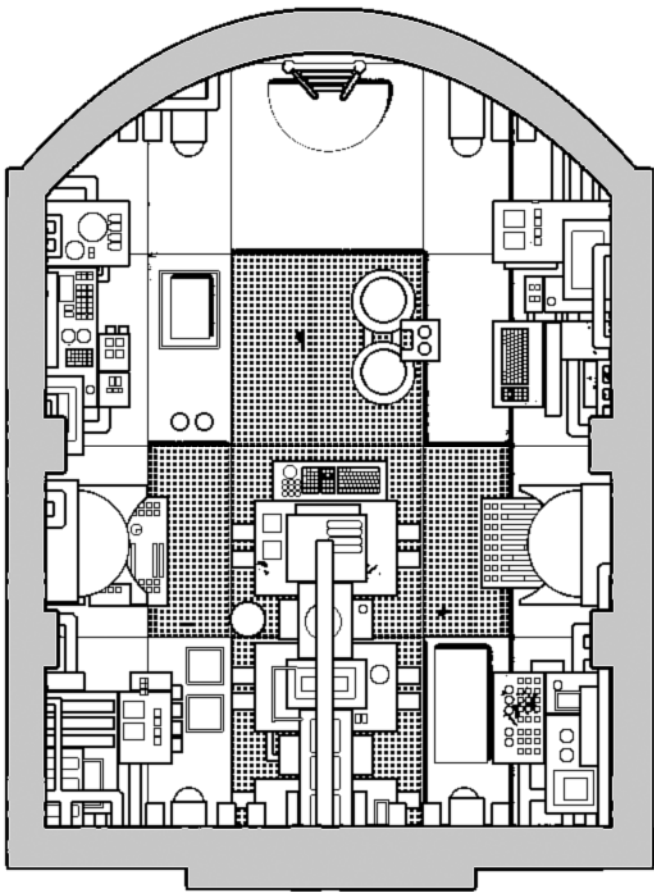
Galley



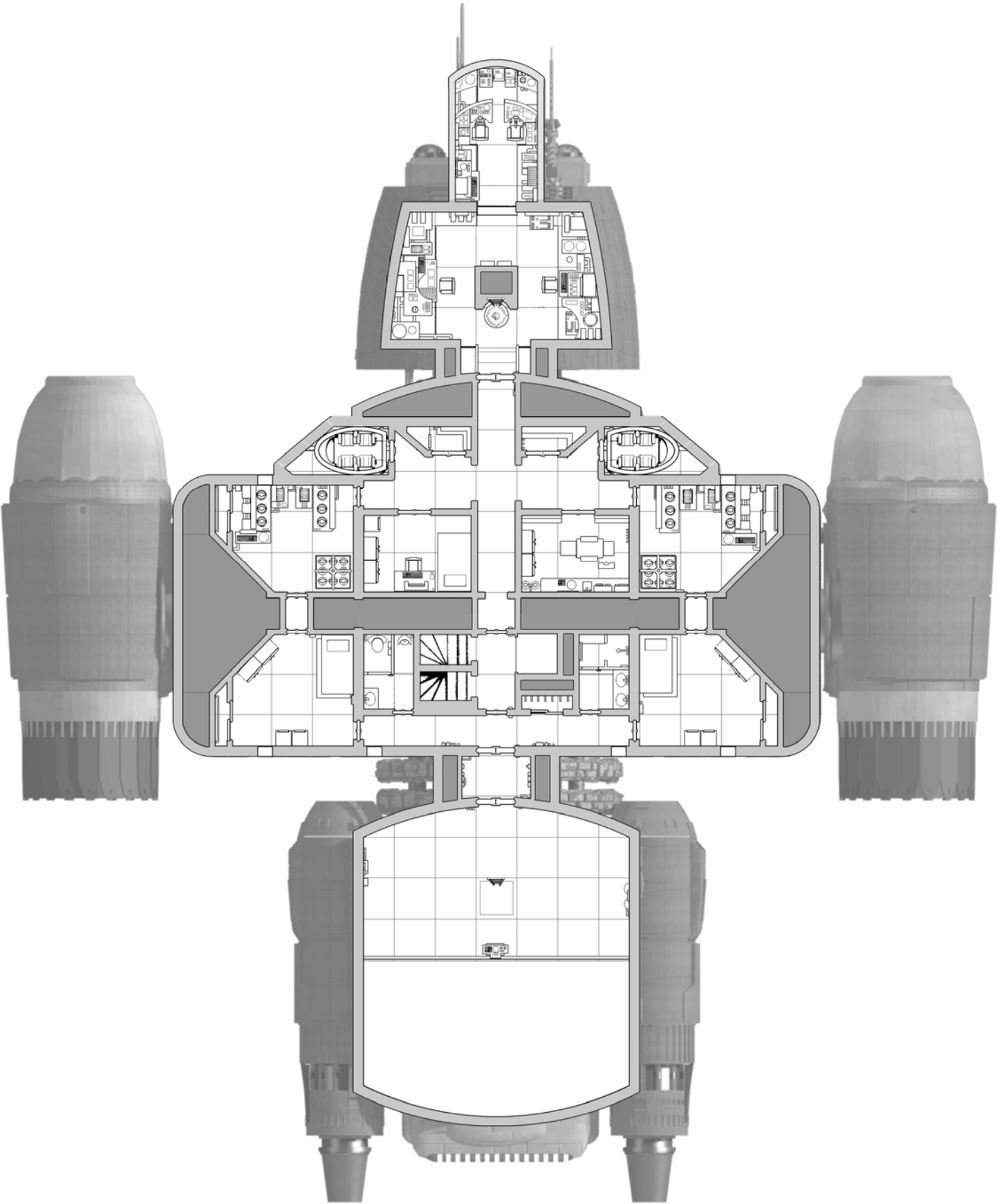
Aft Cargo Bay

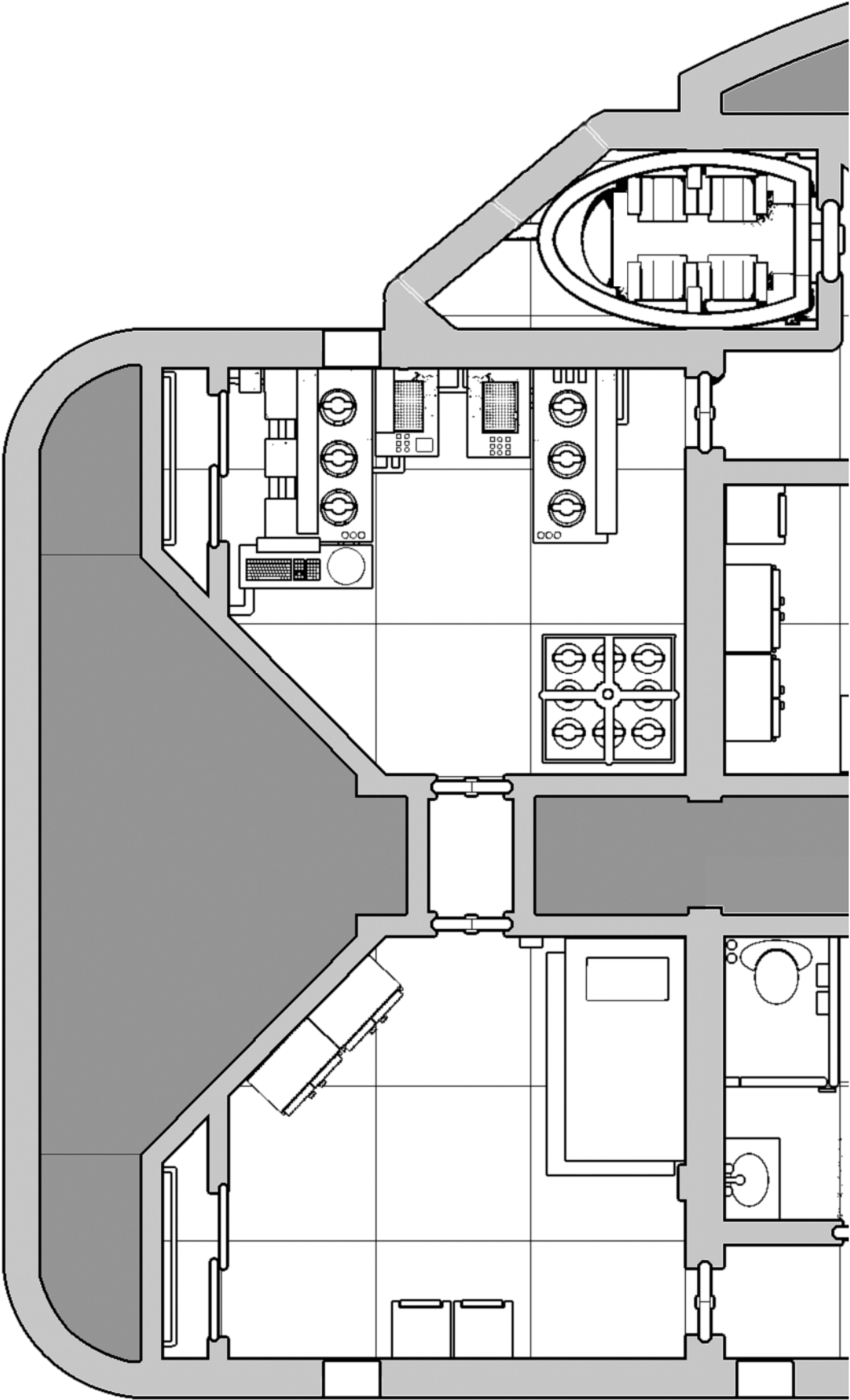


Engine Room

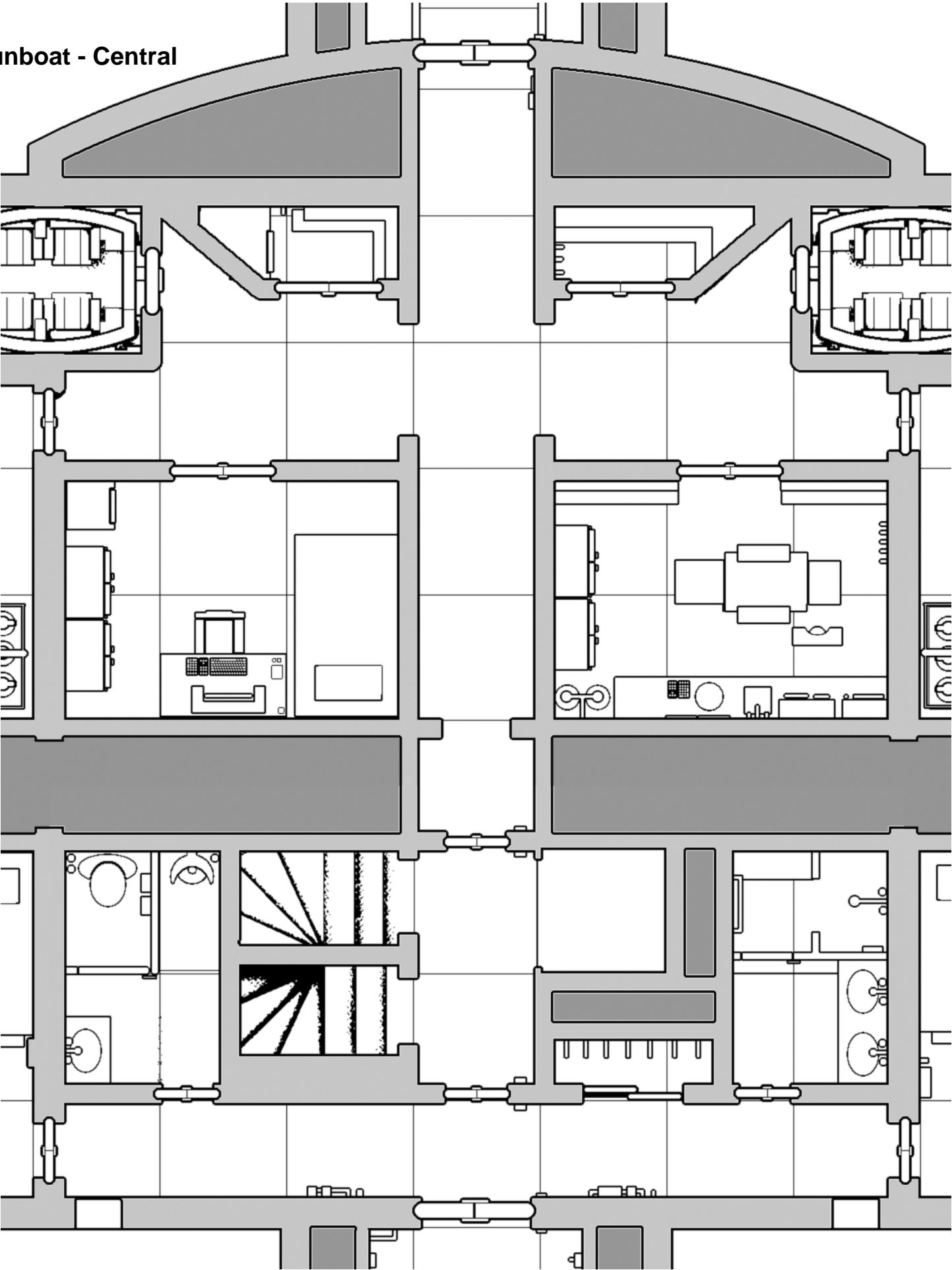


Gunboat Configuration





Gunboat - Central



## Gunboat - Starboard

