

| | |
|----------------------------|-----------|
| EXETER | 1 |
| HANGAR DECK..... | 4 |
| MAIN DECK | 8 |
| PASSENGER DECK..... | 16 |
| CARGO DECK | 20 |
| SKIFF | 24 |

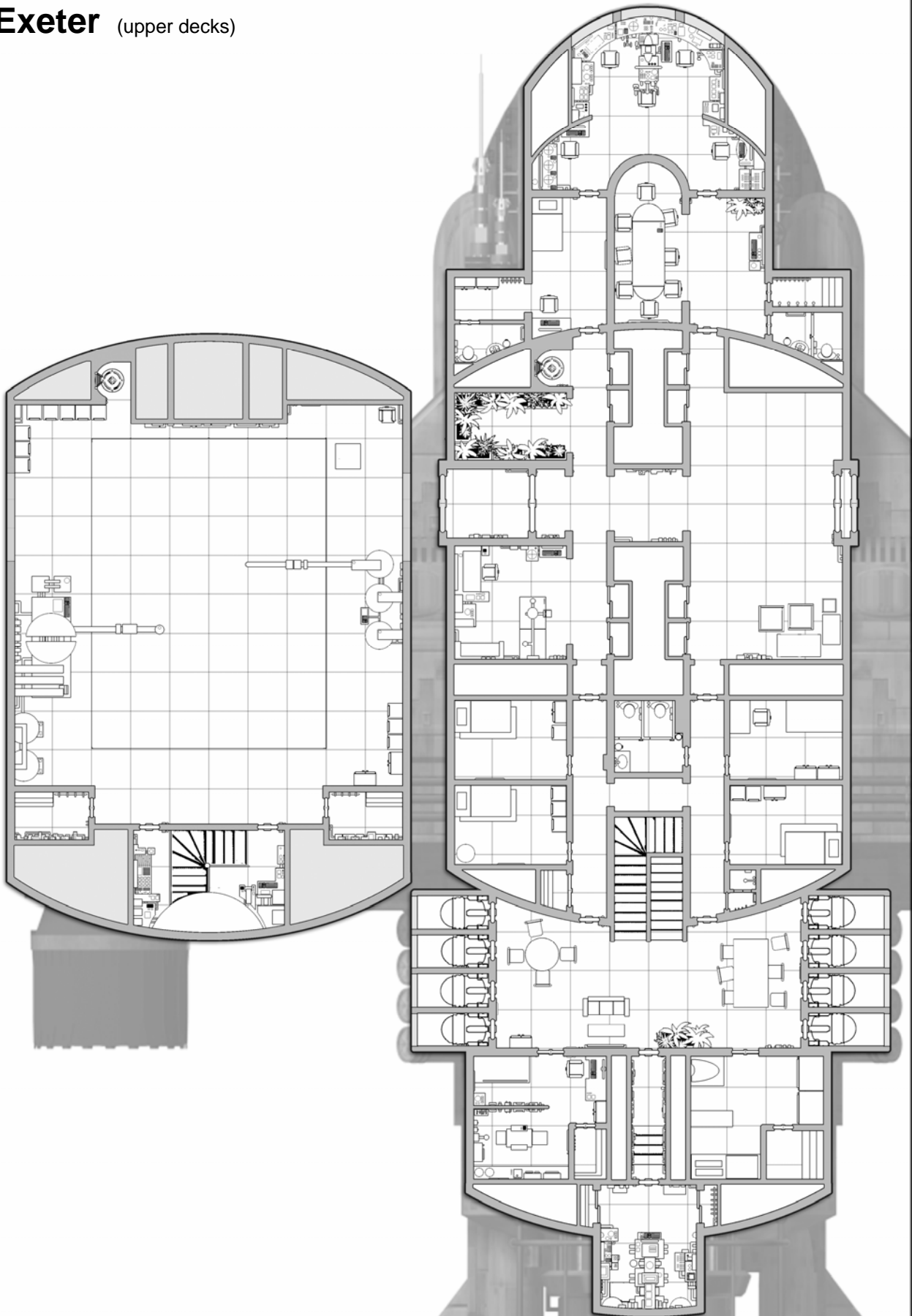
Exeter

Exeter is a four level ship. The topmost level is the shuttle bay. Beneath this is the main deck where the bridge and crew areas, as well as auxiliary cargo storage and engine room, are located. Next is the passenger deck. The lowest level of the ship is the main cargo hold. An interior map of the ship's skiff is included at the end of the document.

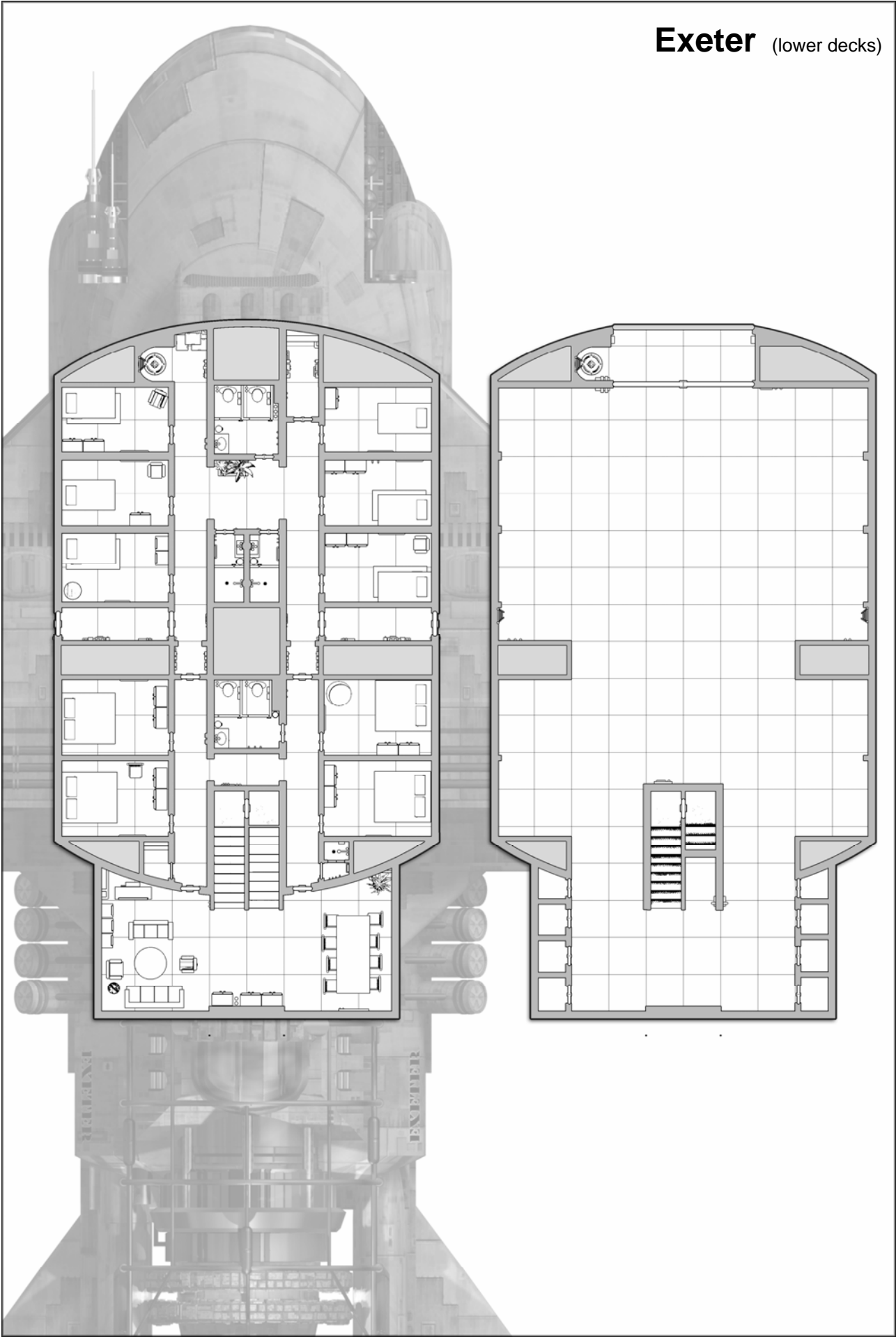
In this document, the ship is laid out from top to bottom, front to back. Note that there is considerable overlap along the perimeter of the maps, especially the "seem" that runs down the middle of the ship. Refer to the composite maps when in doubt about how to assemble the pages. There are not separate map sections for the privateer configuration as all changes are external.

This document was created in its entirety by Ryan Wolfe, © 2006. Permission is given to reproduce these maps for personal, non-profit, use.

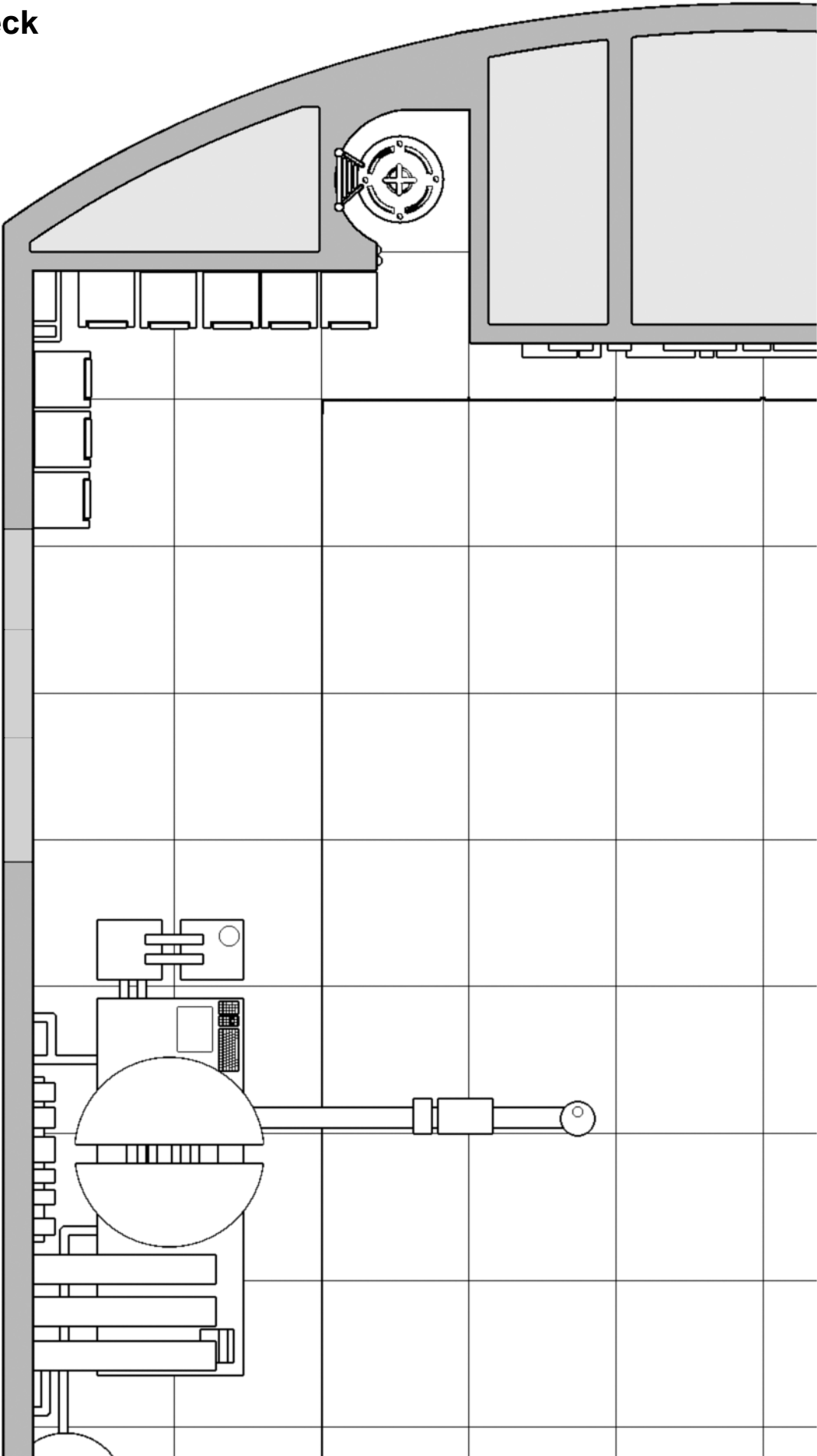
Exeter (upper decks)

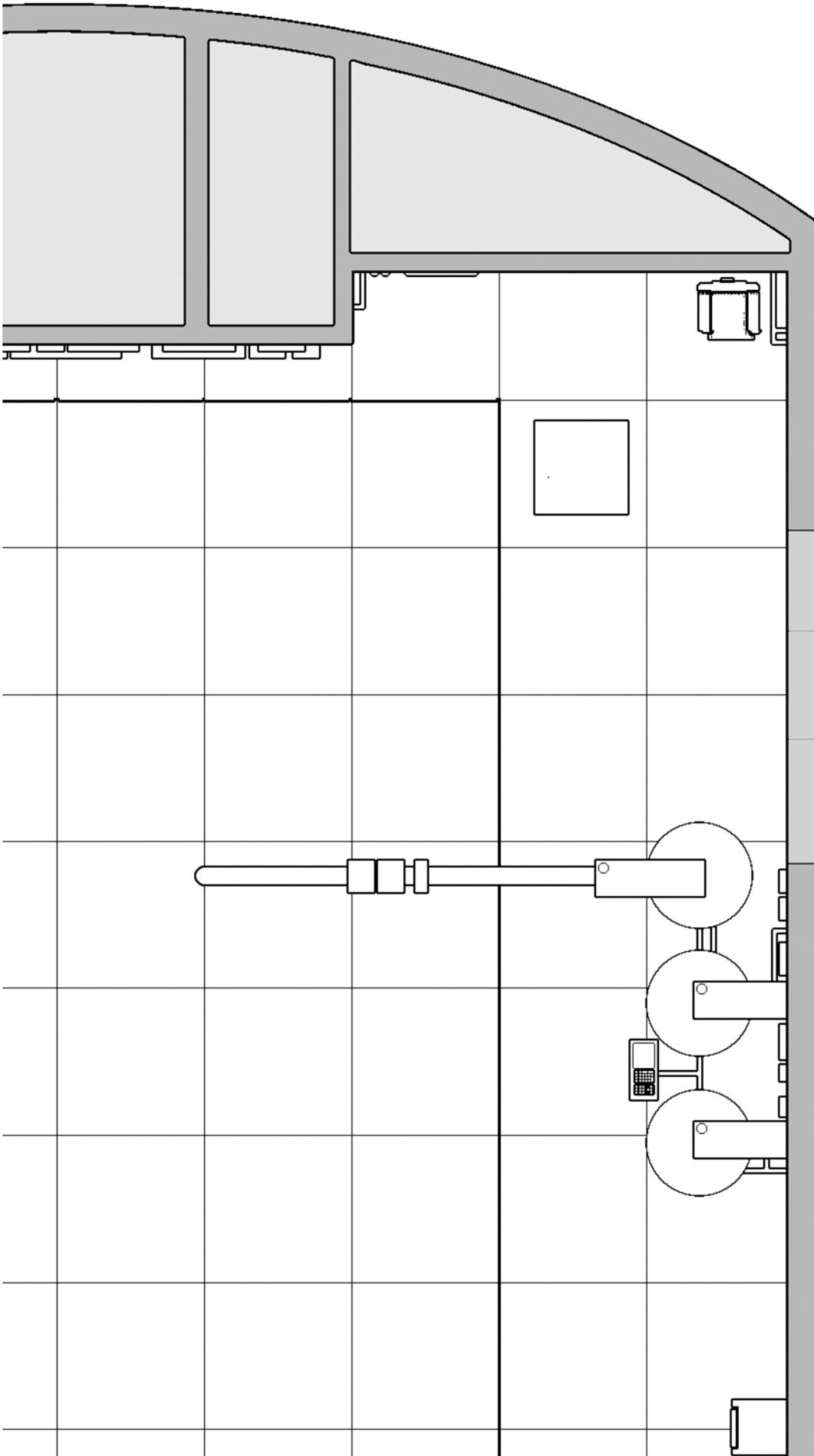


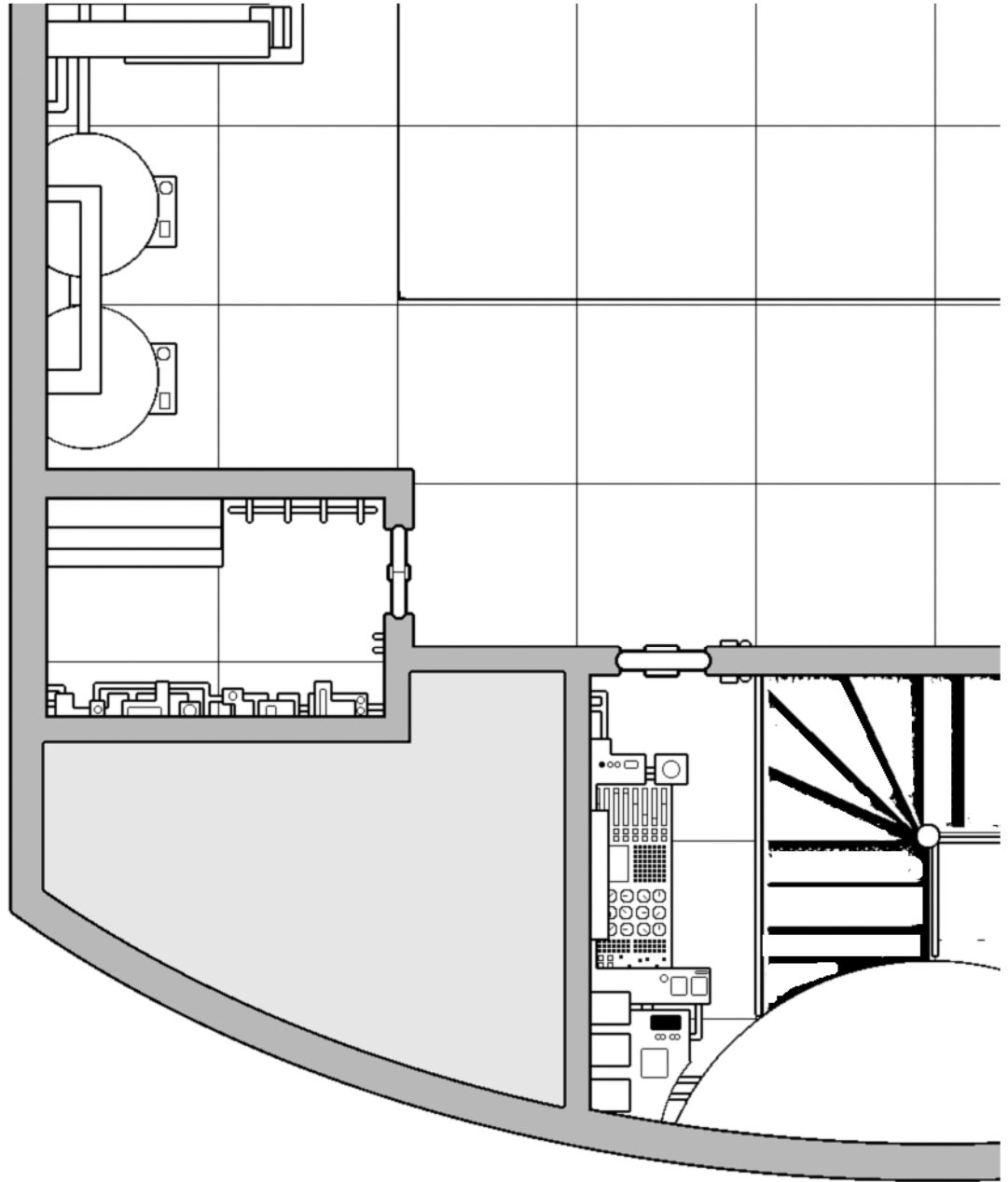
Exeter (lower decks)

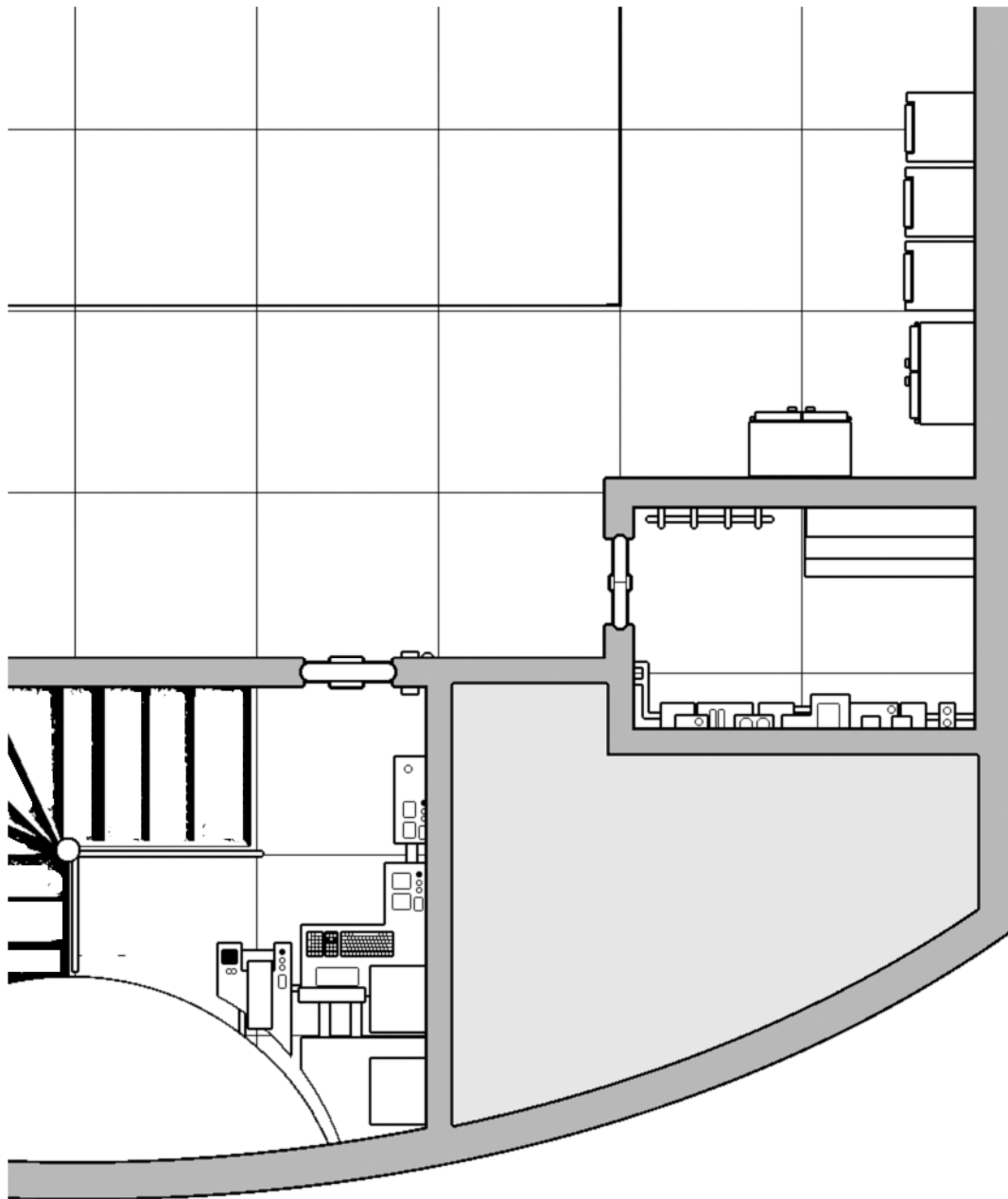


Hangar Deck

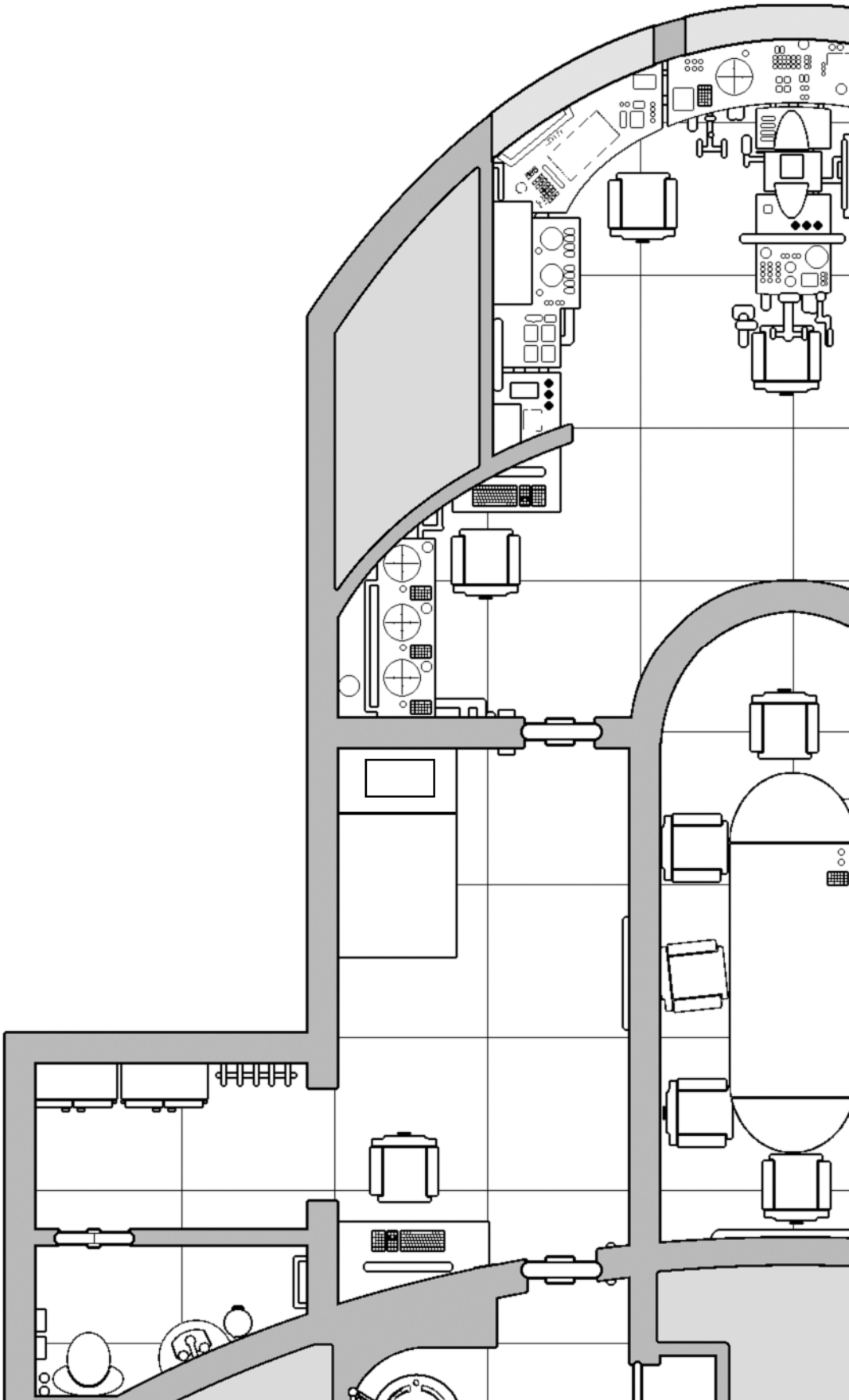


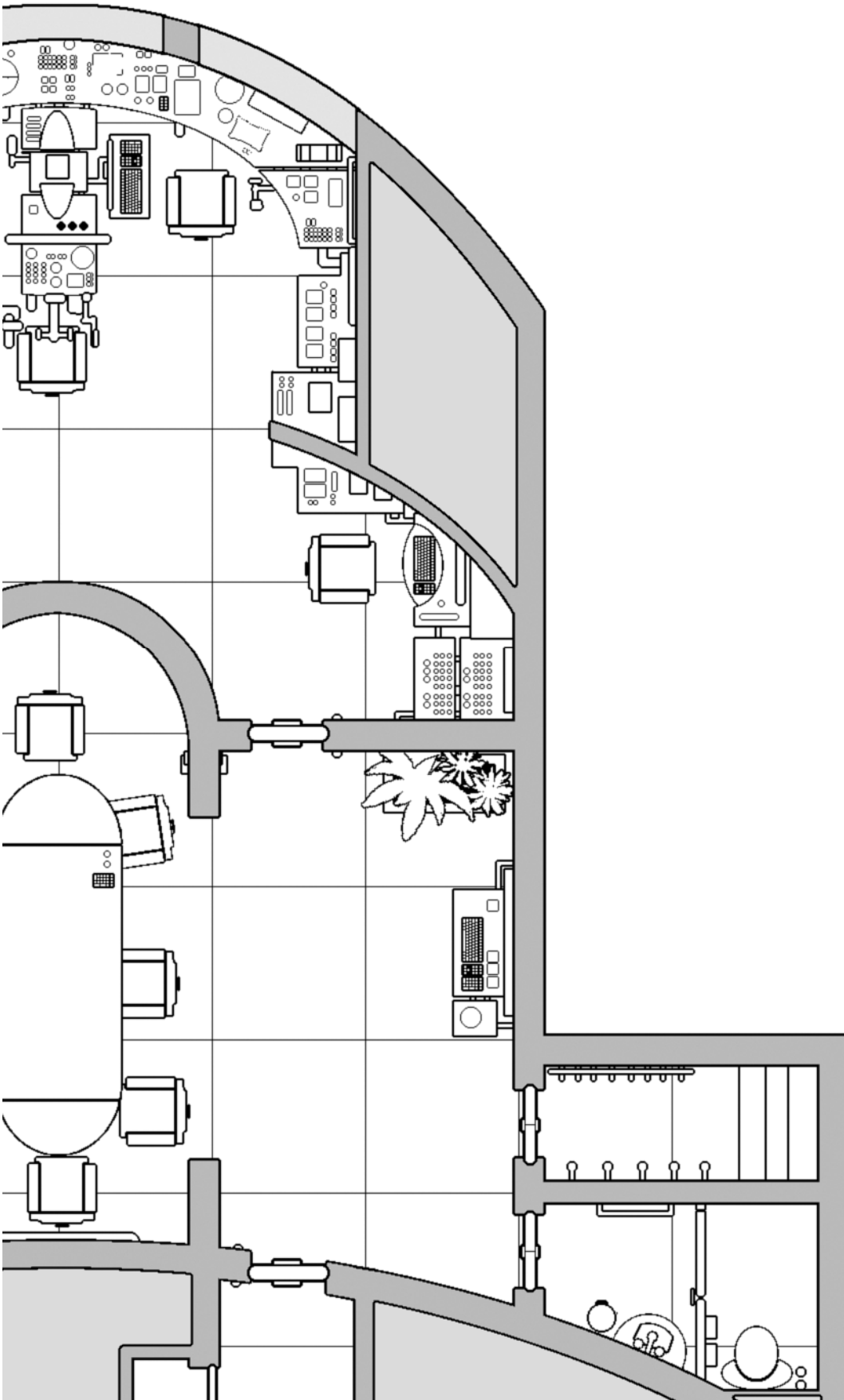


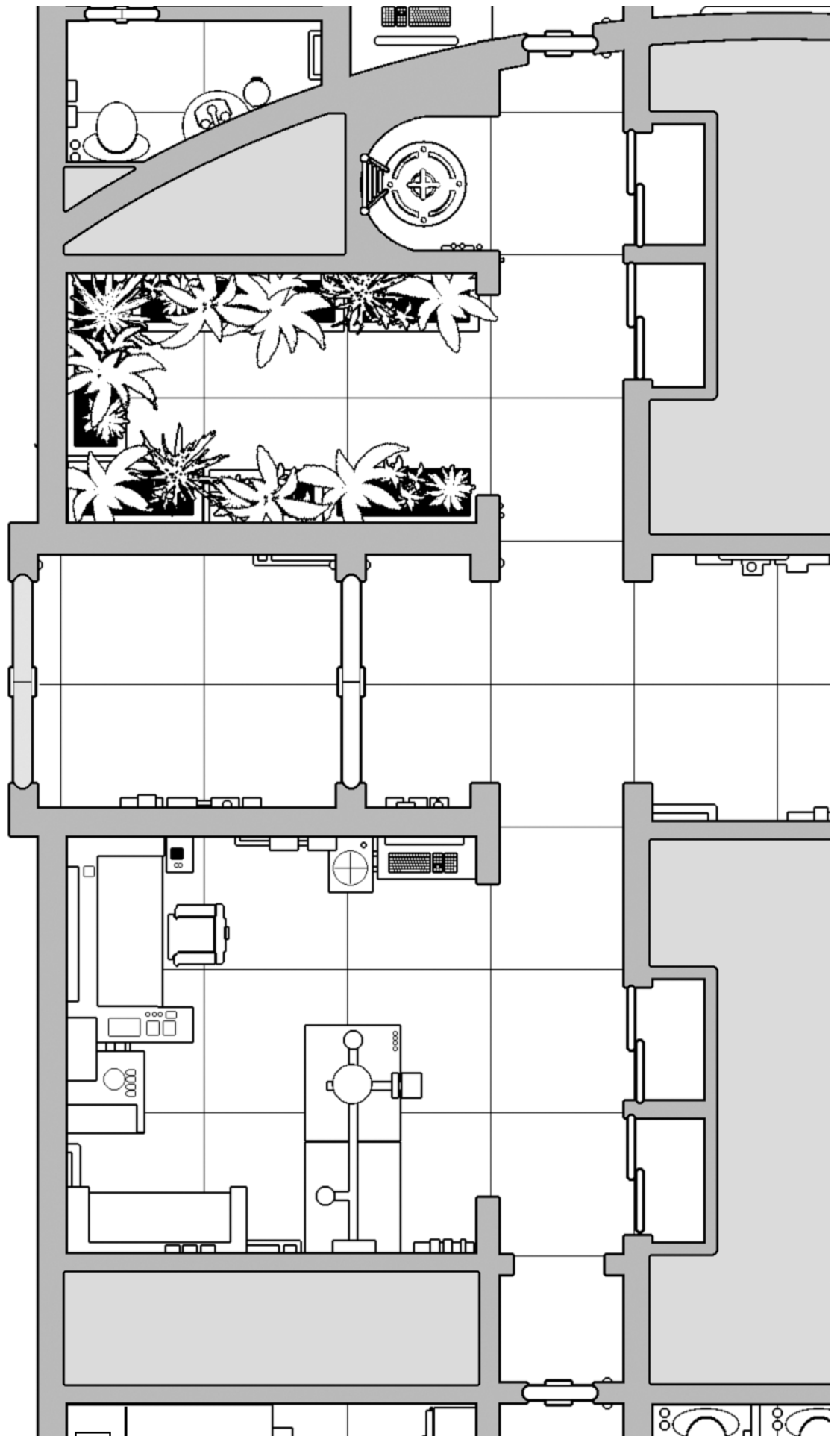


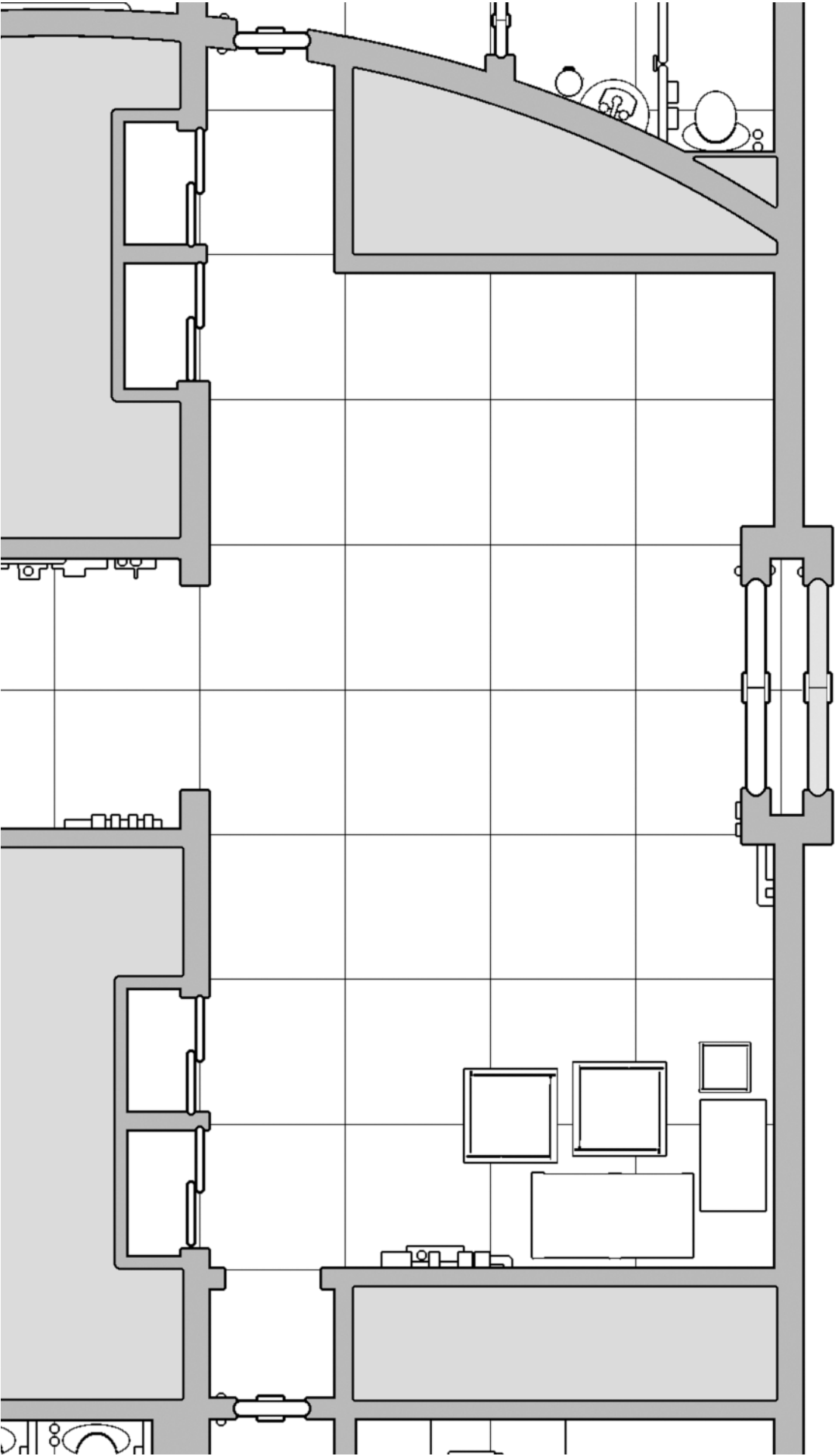


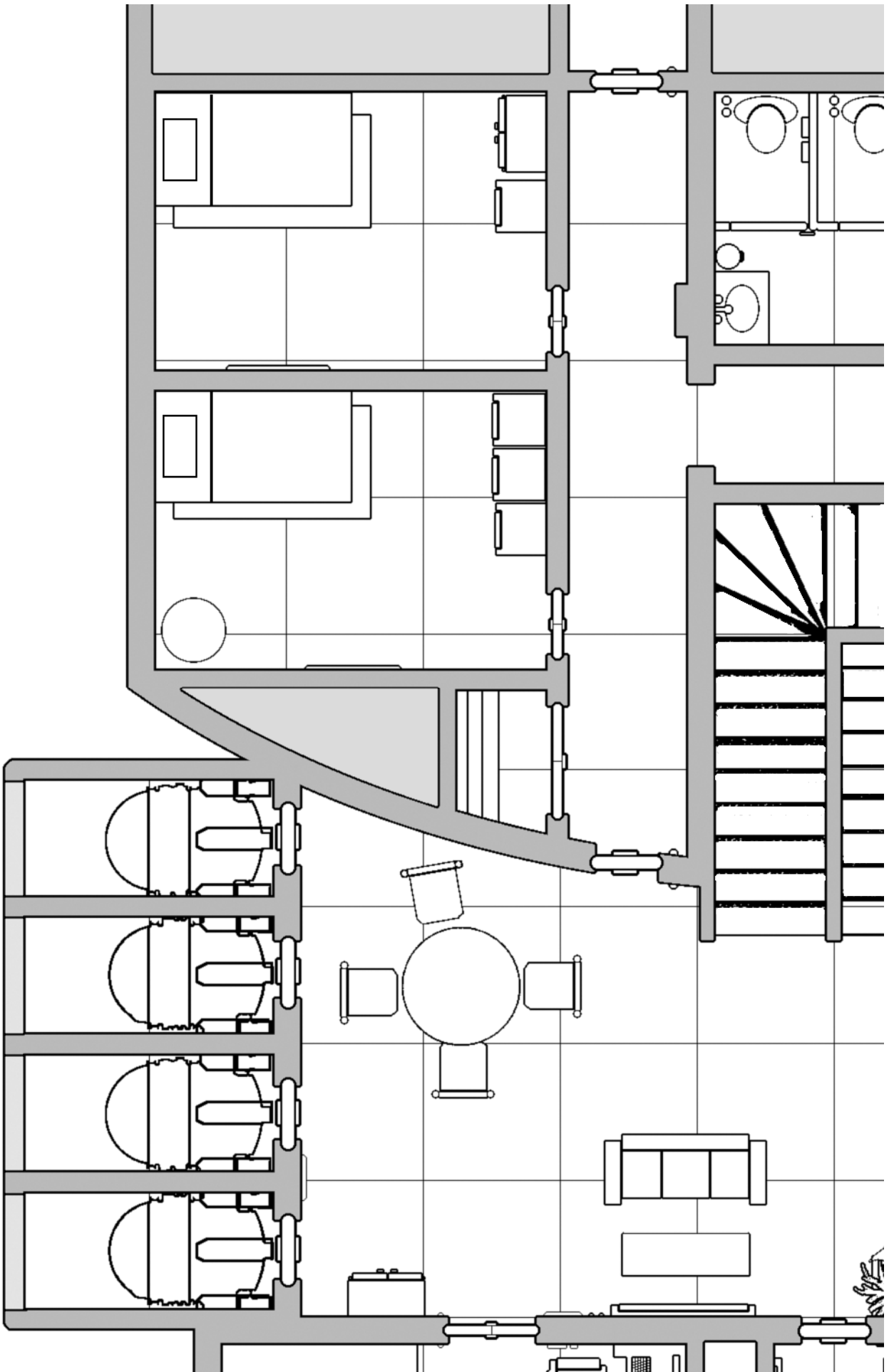
Main Deck

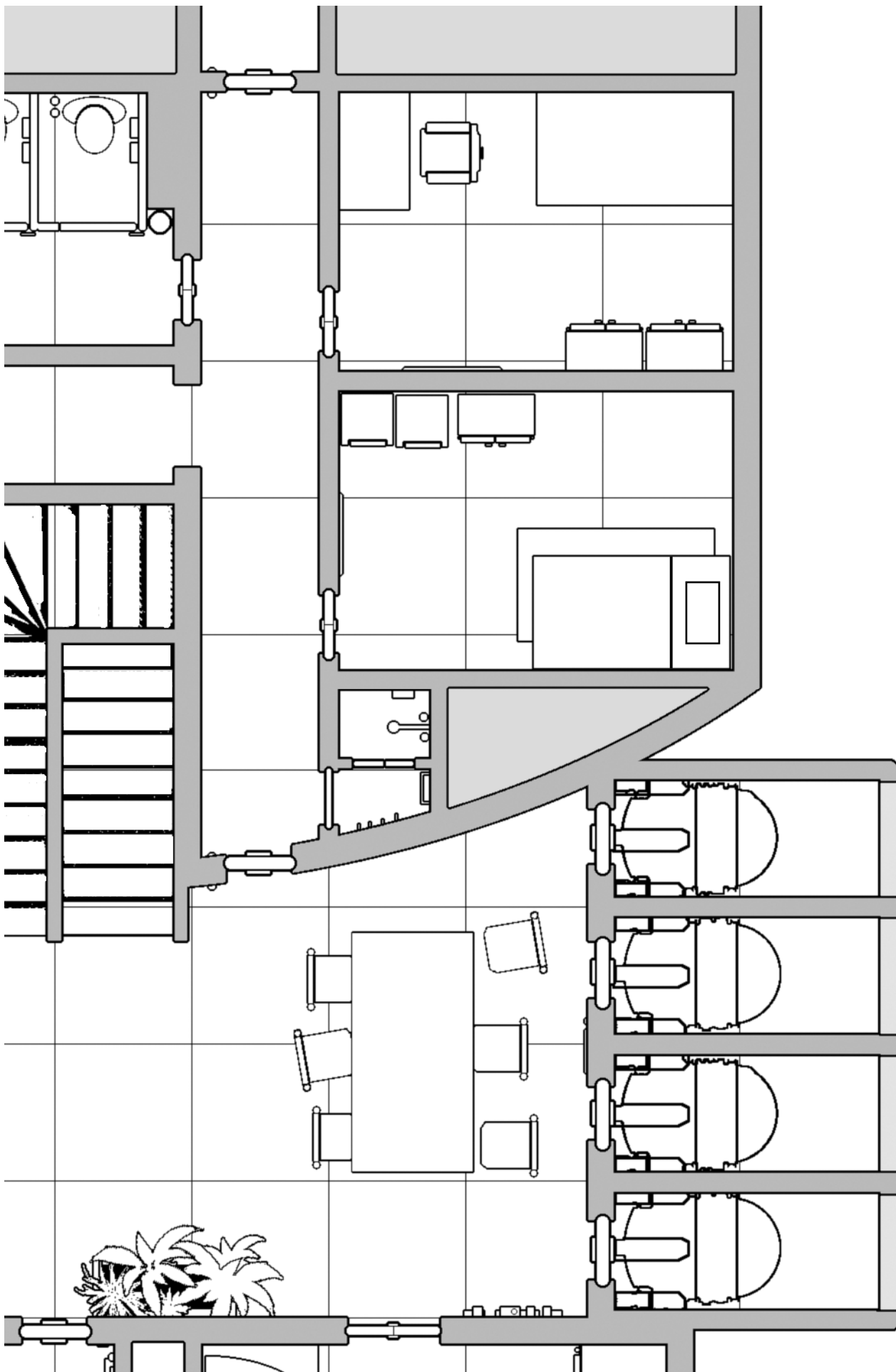


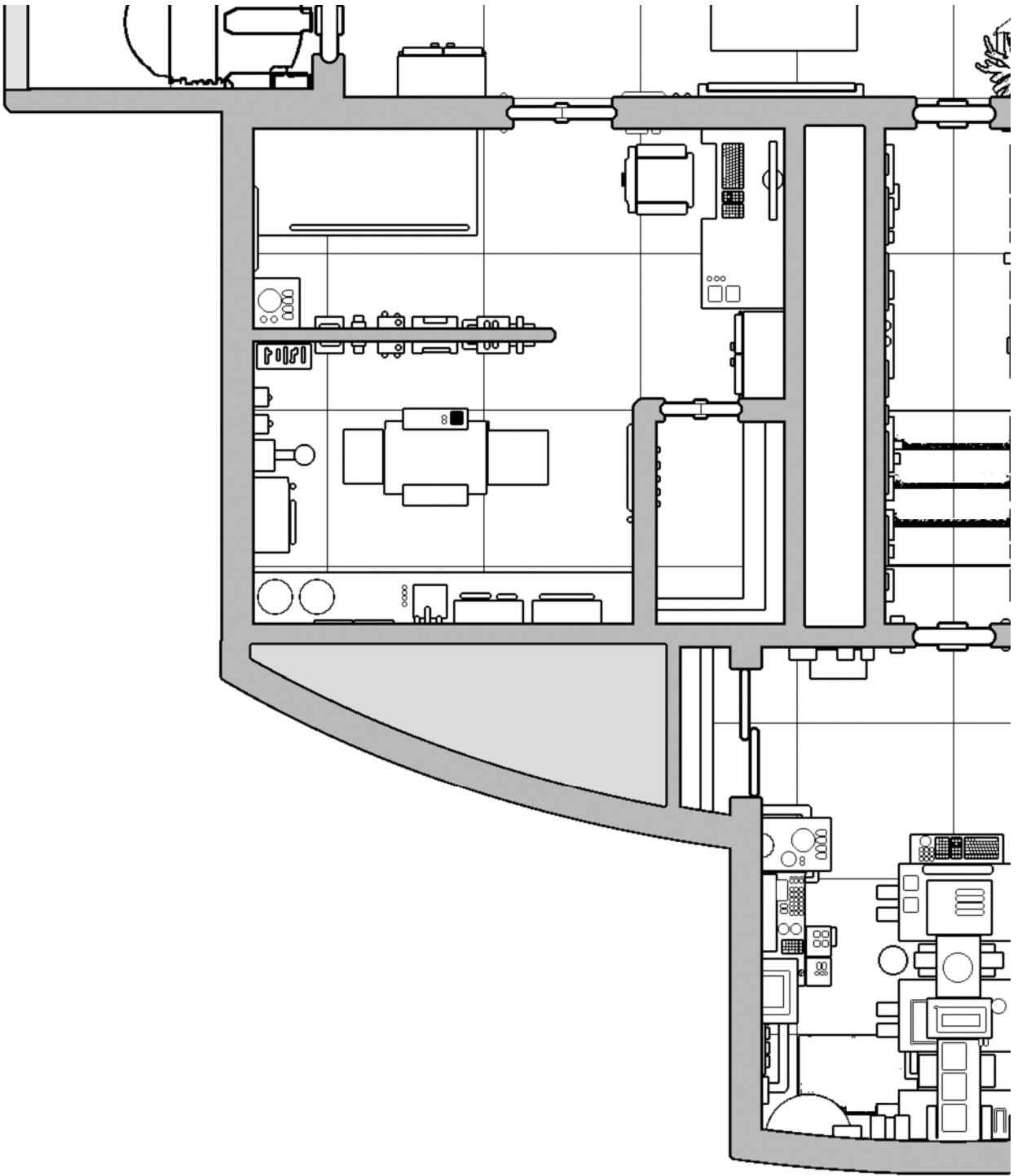


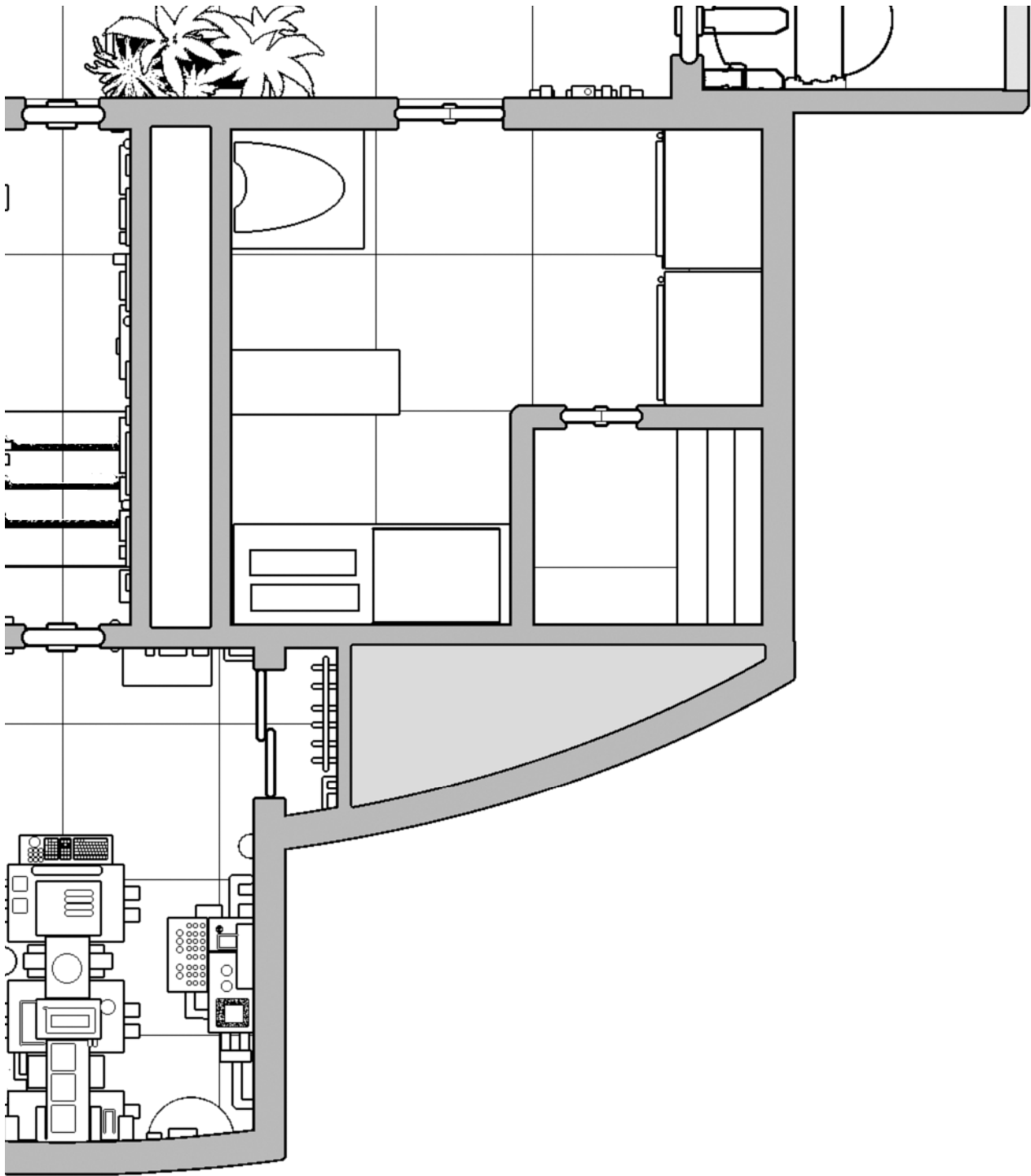




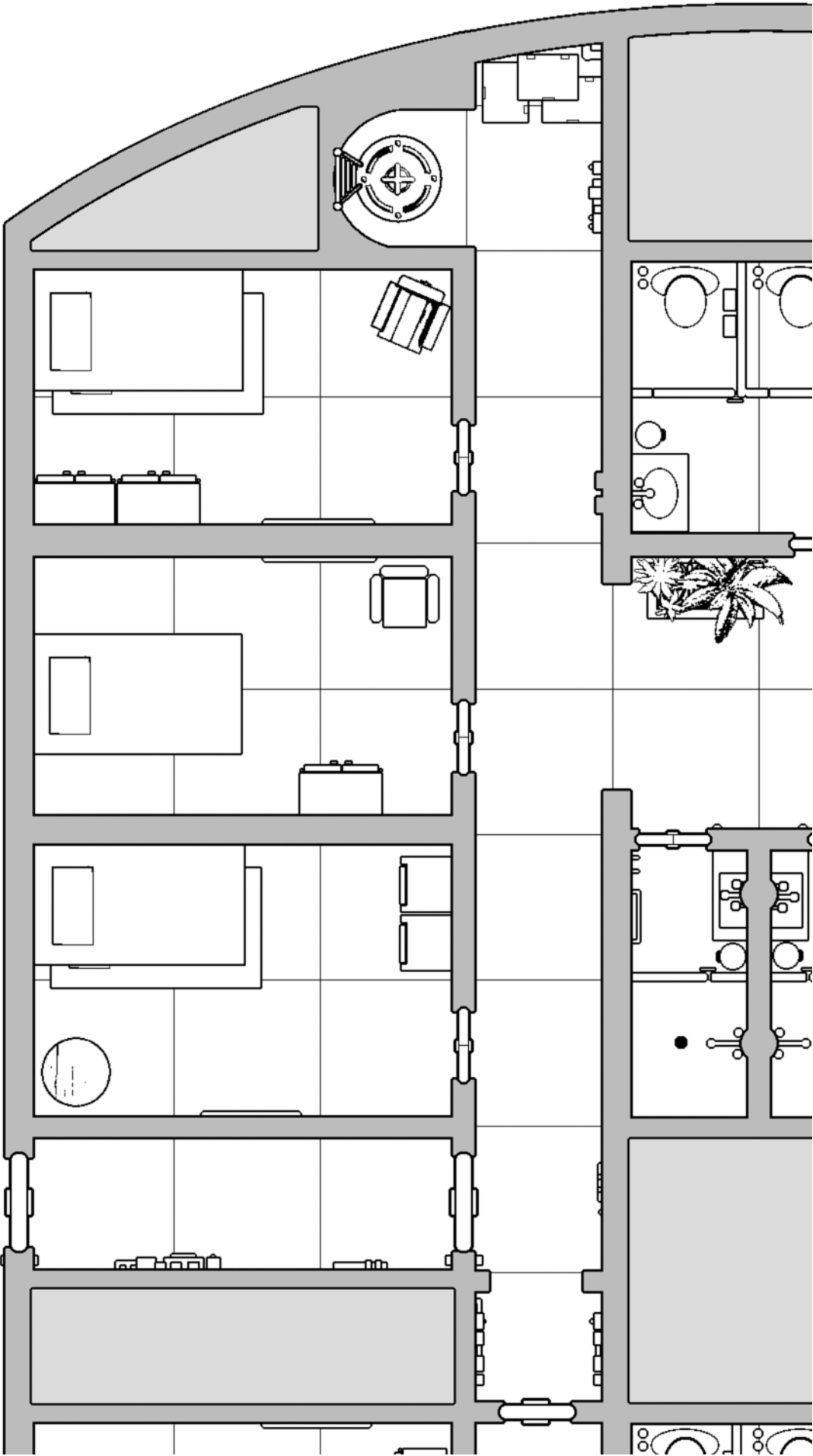


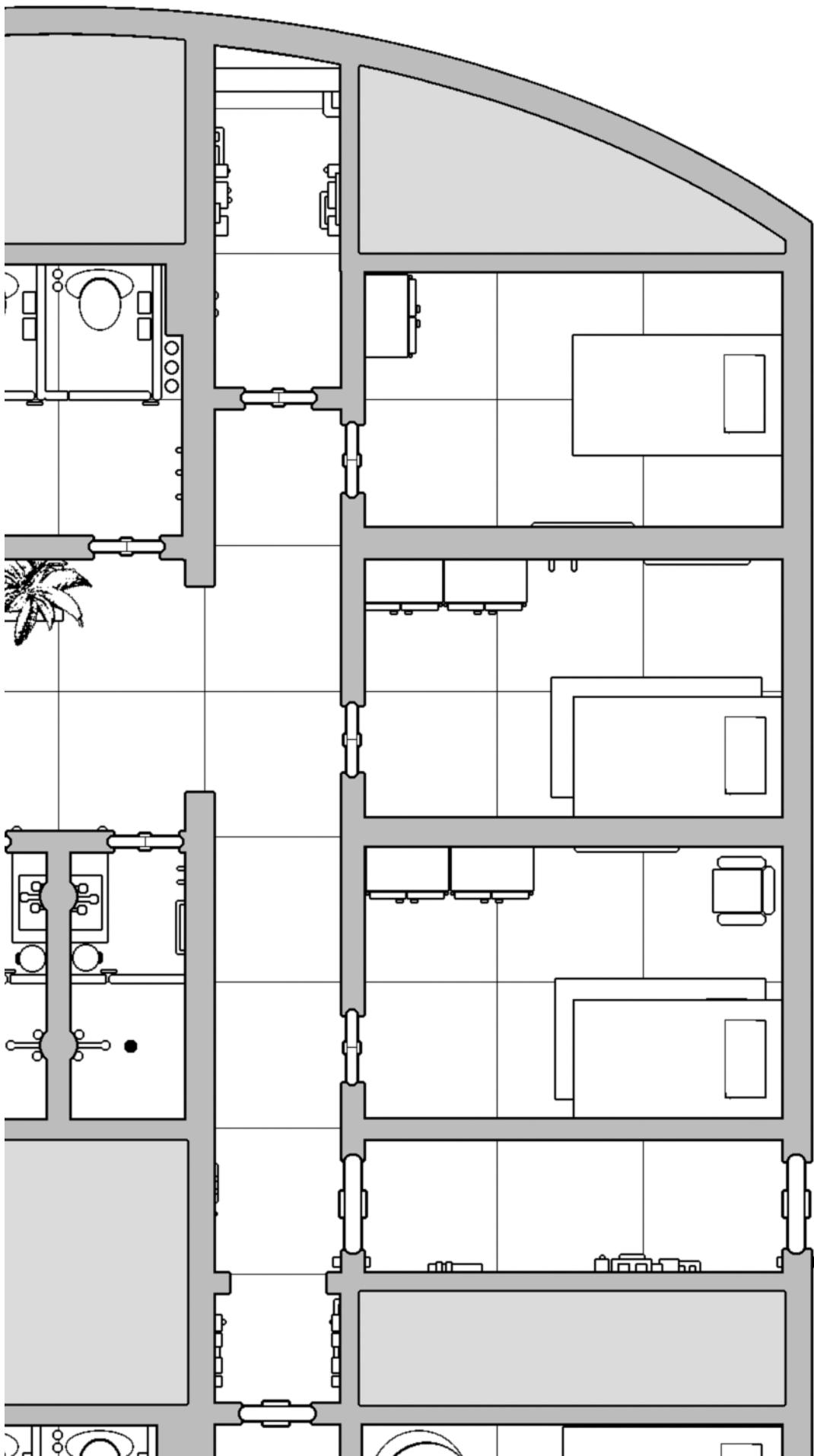


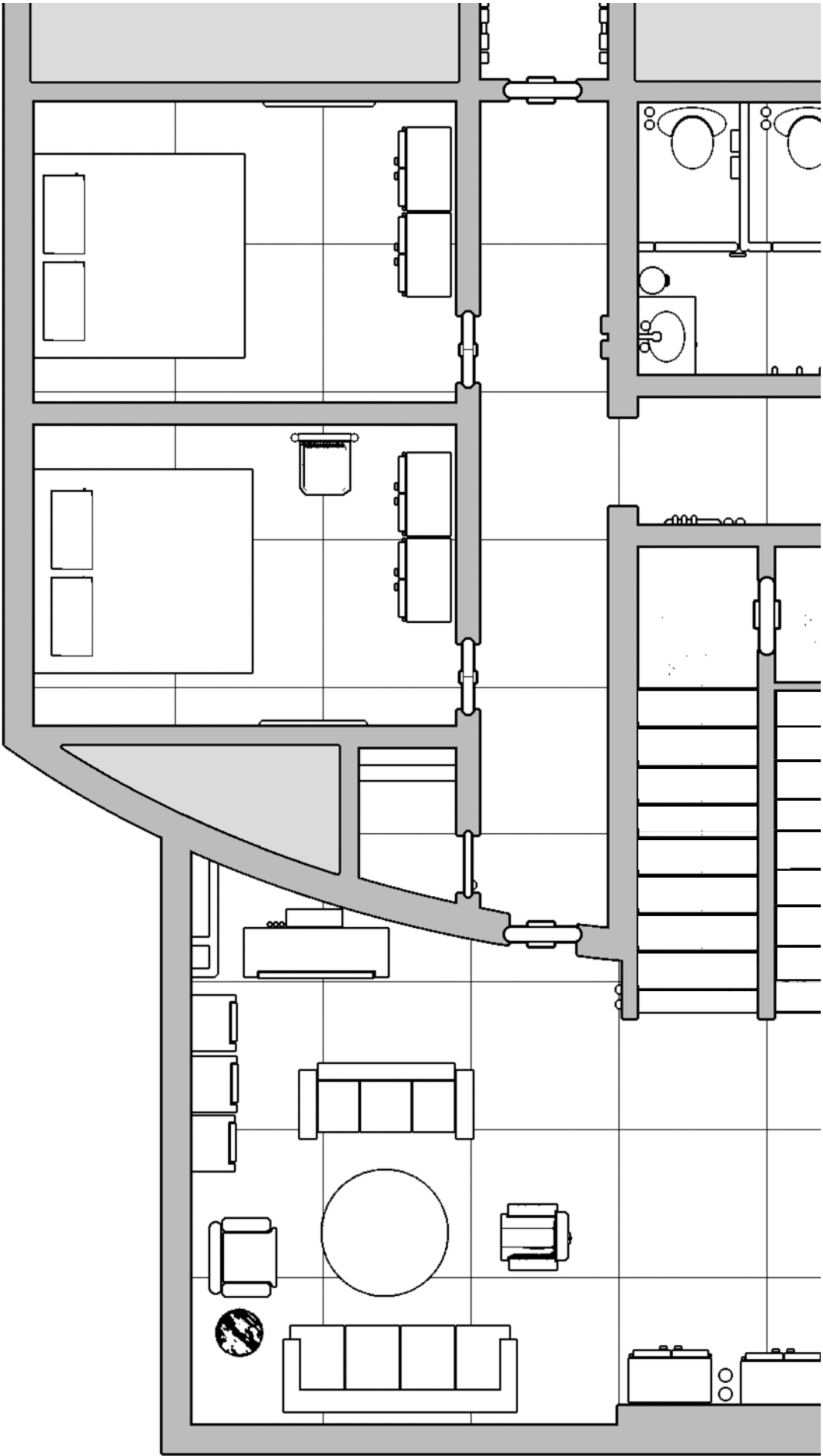


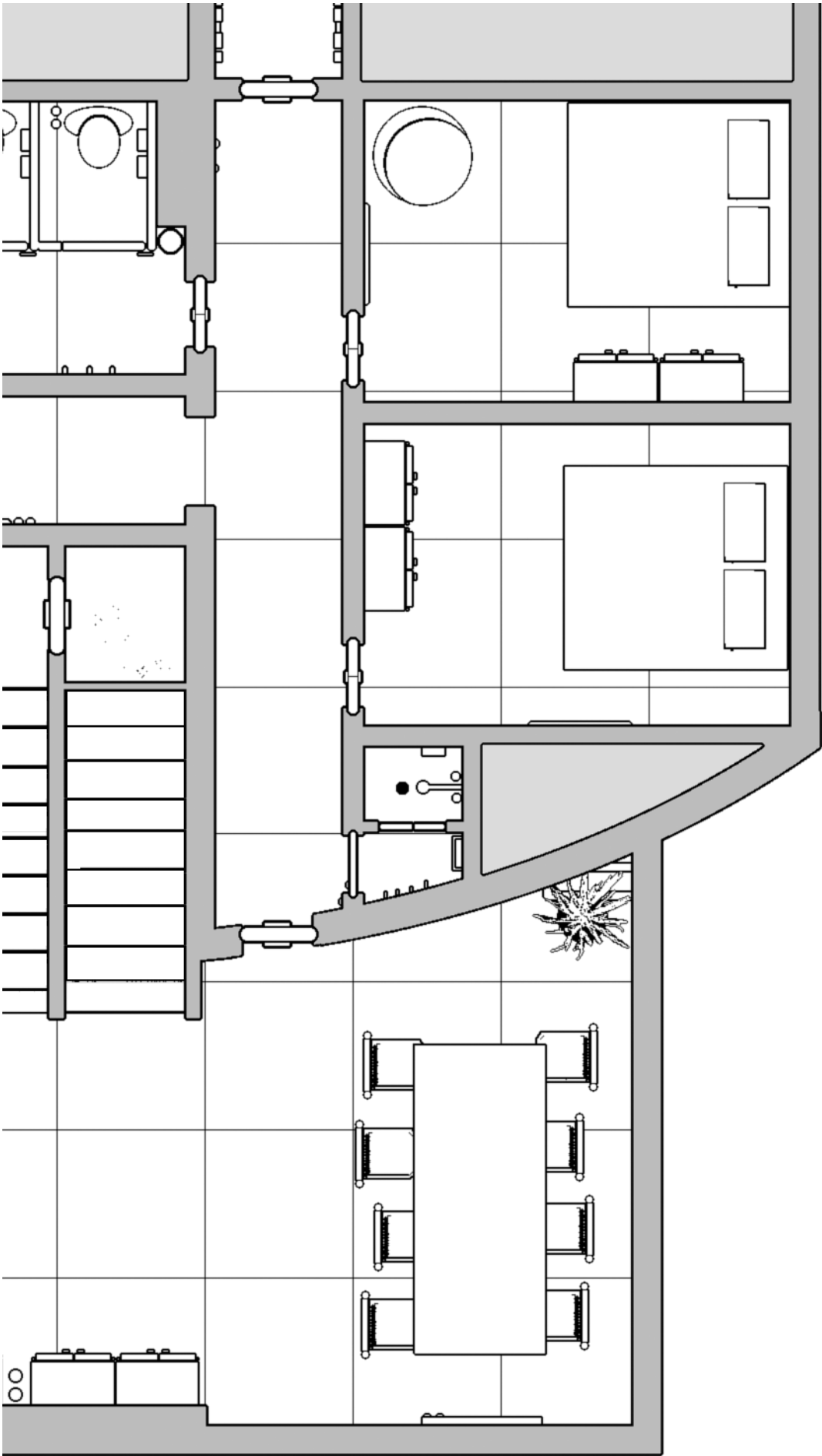


Passenger Deck

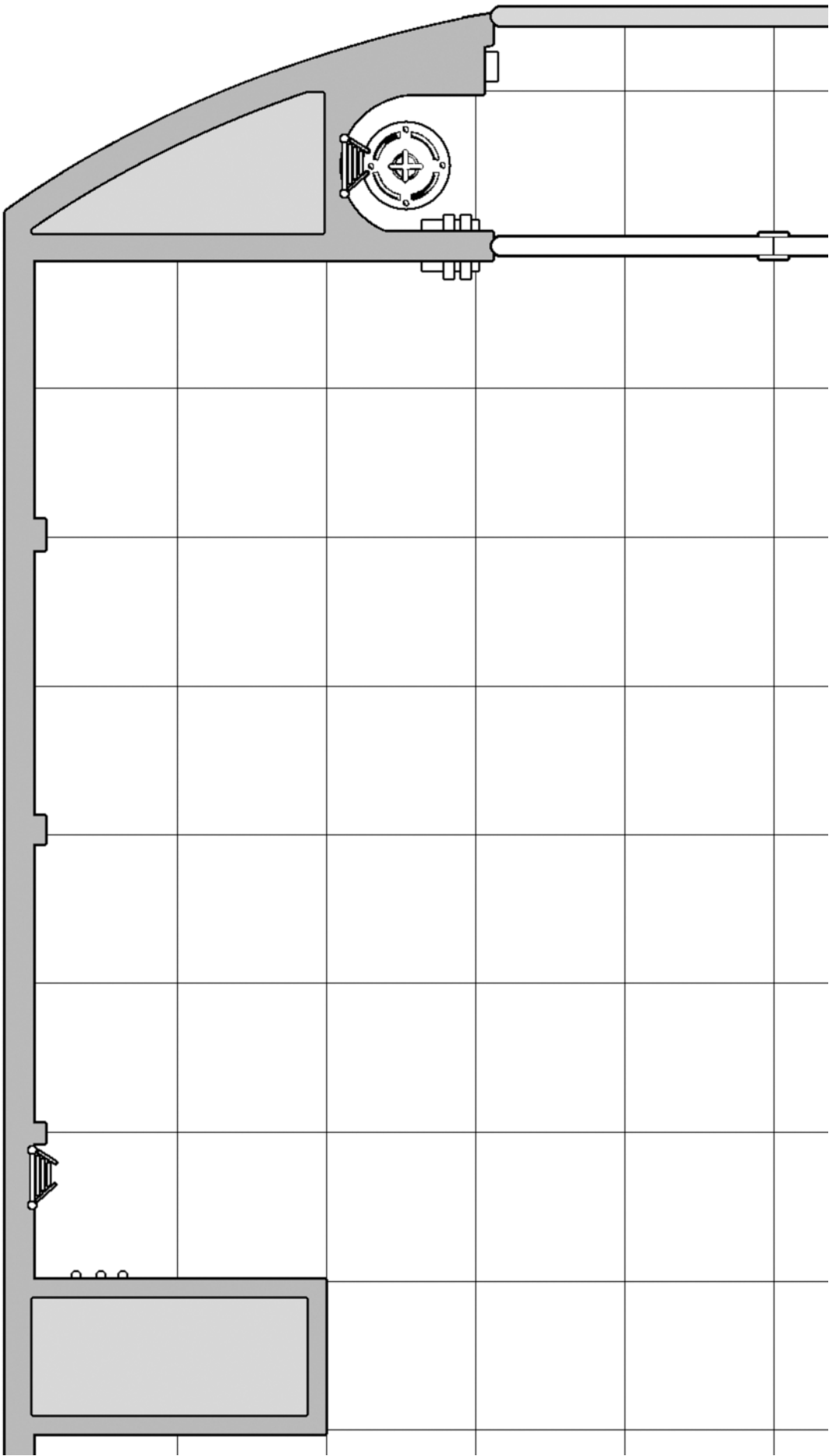


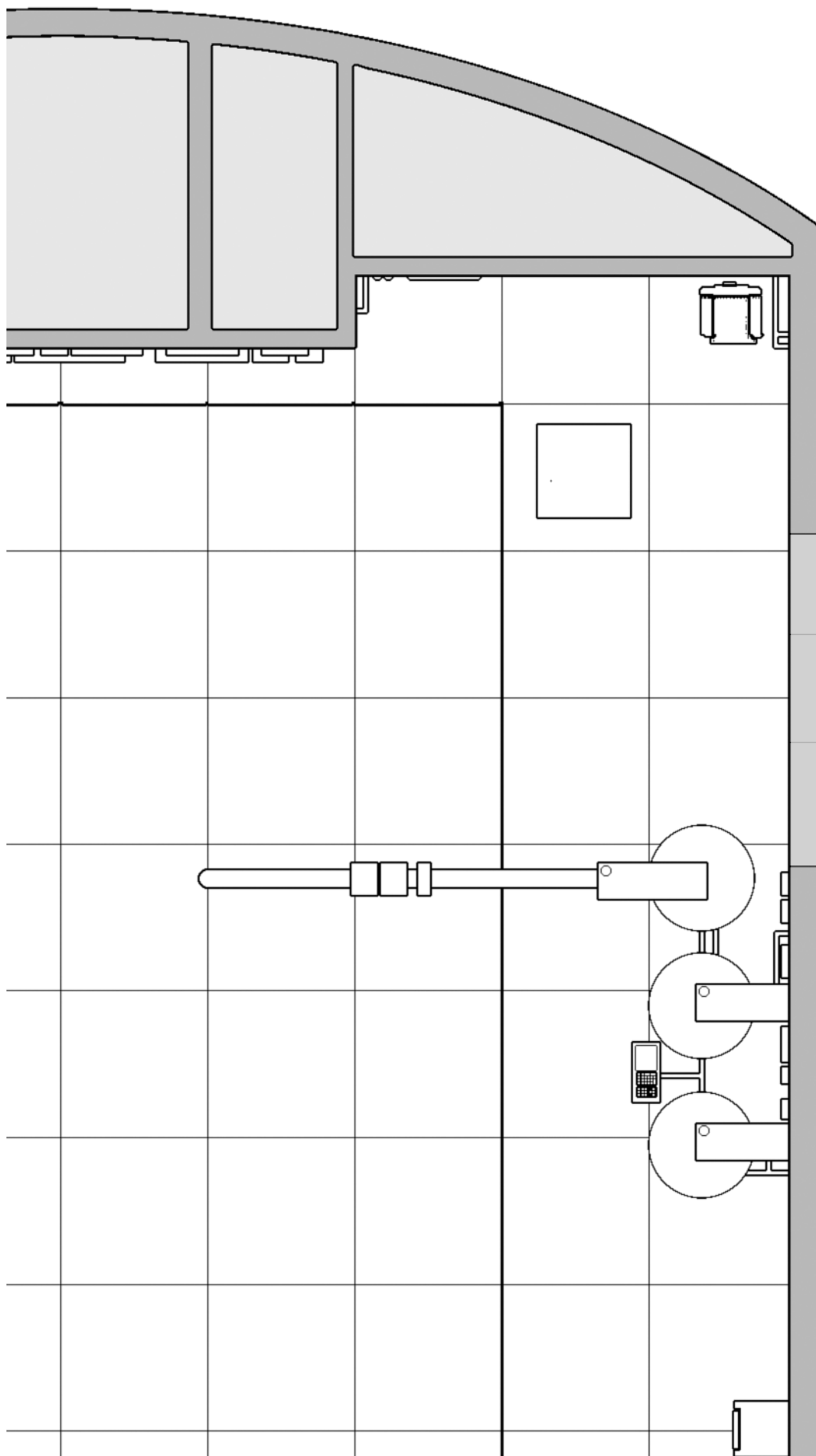


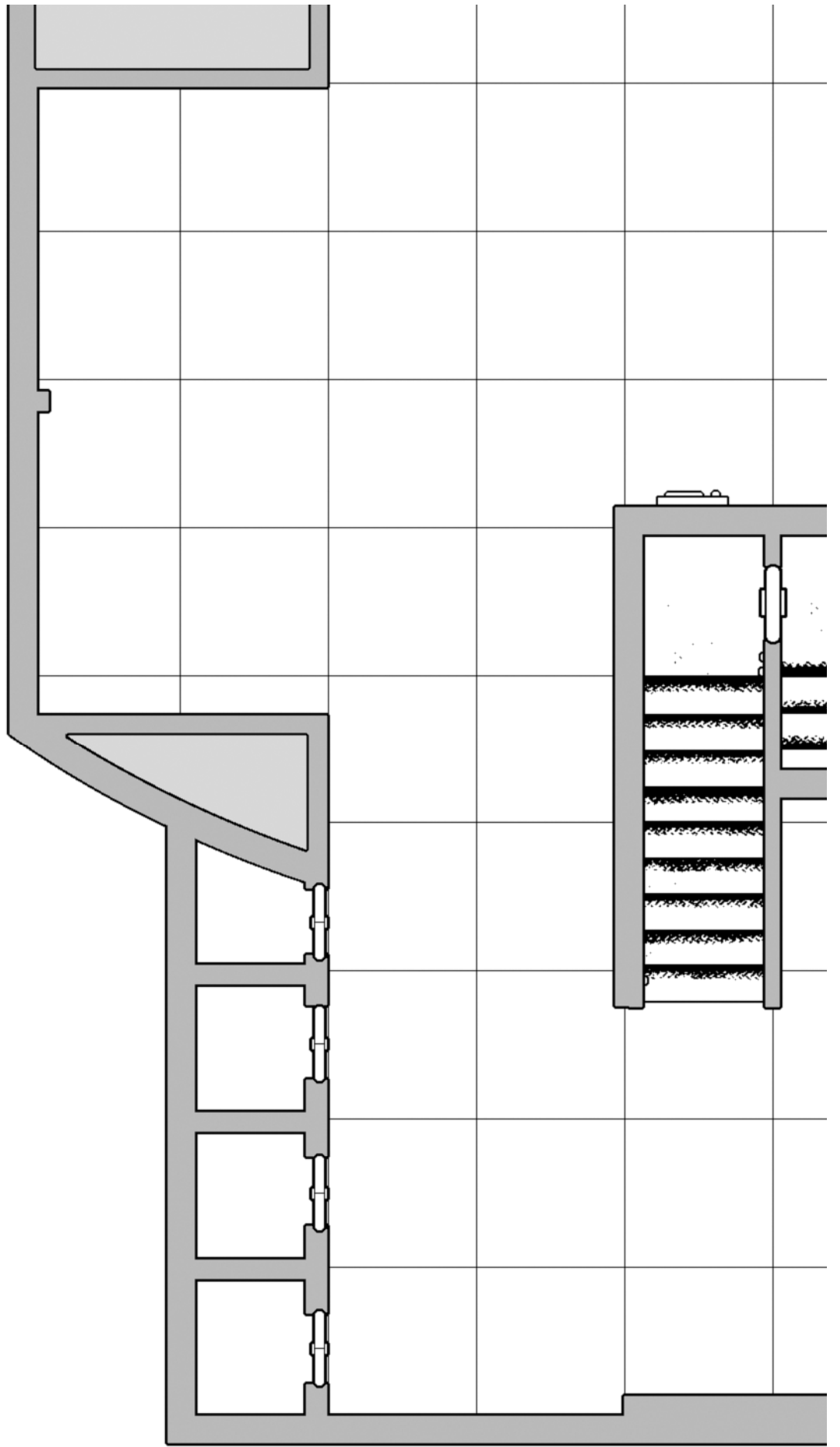


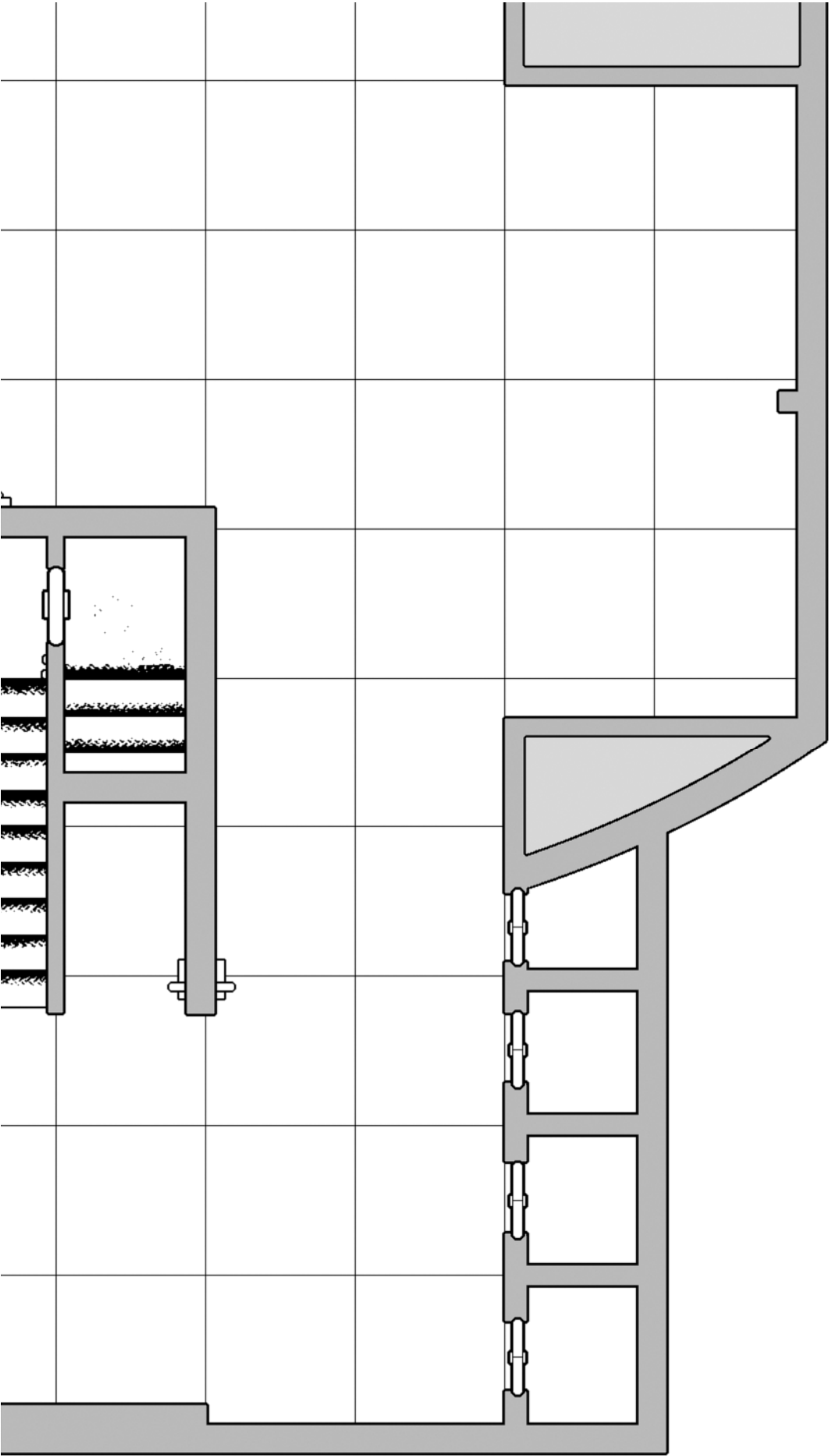


Cargo Deck









Skiff

