

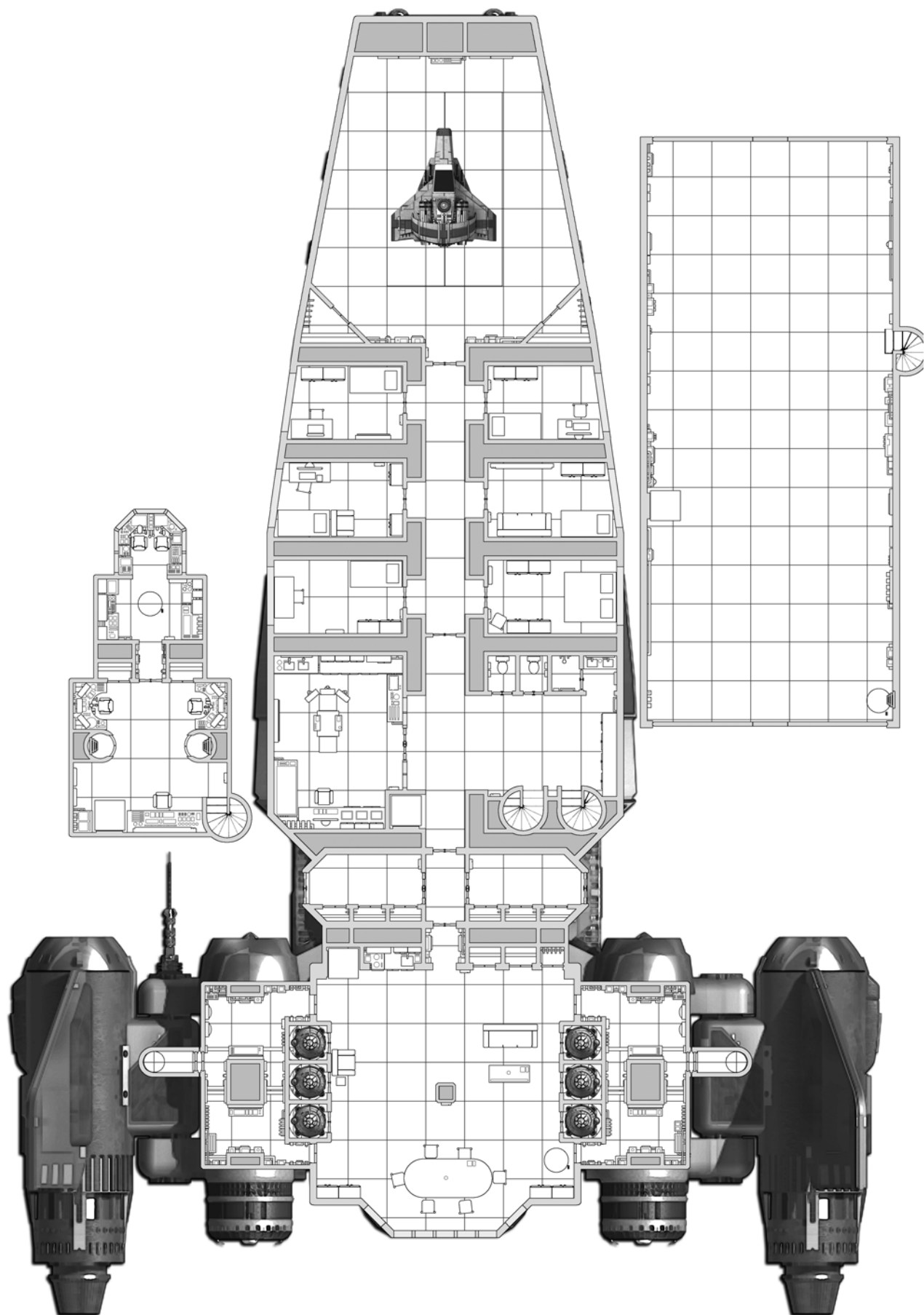
Lakota

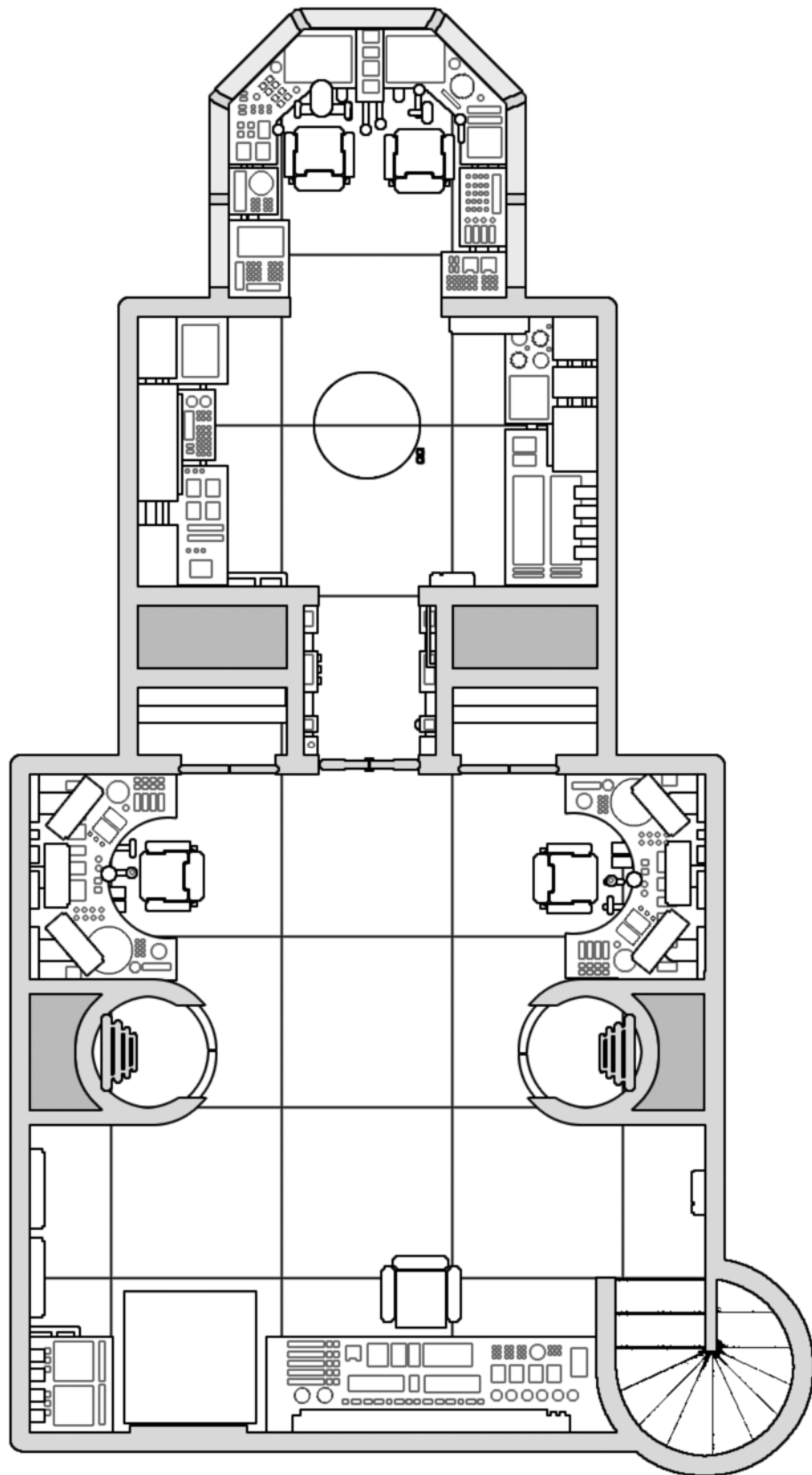
Lakota has three decks. The topmost is the bridge. The middle deck is the main living area and contains the crew cabins, lounge, and medical bay. The lower deck is a single large chamber used for cargo or as a hangar. The ship is mapped here from top to bottom, front to back.

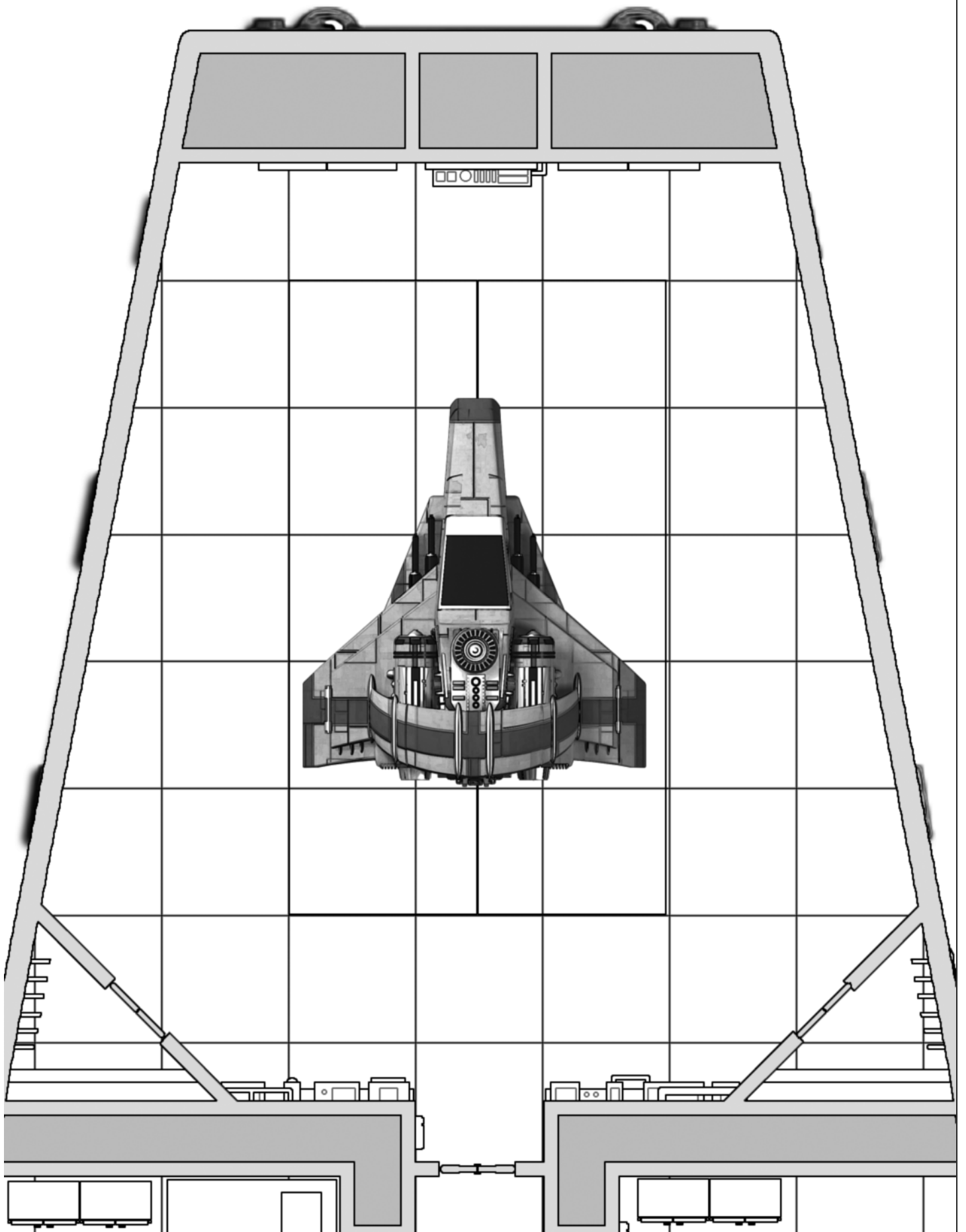
There are also some variant map pages provided. The first is a blank version of the forward bay on the main deck. The second replaces three crew cabins with some prisoner transport cells. The final pair of variant pages replace the lower deck with a passenger deck. In addition, alternate versions of the forward bay with and without the Stormcrow-class fighter present are provided. These pages are included at the end of this document.

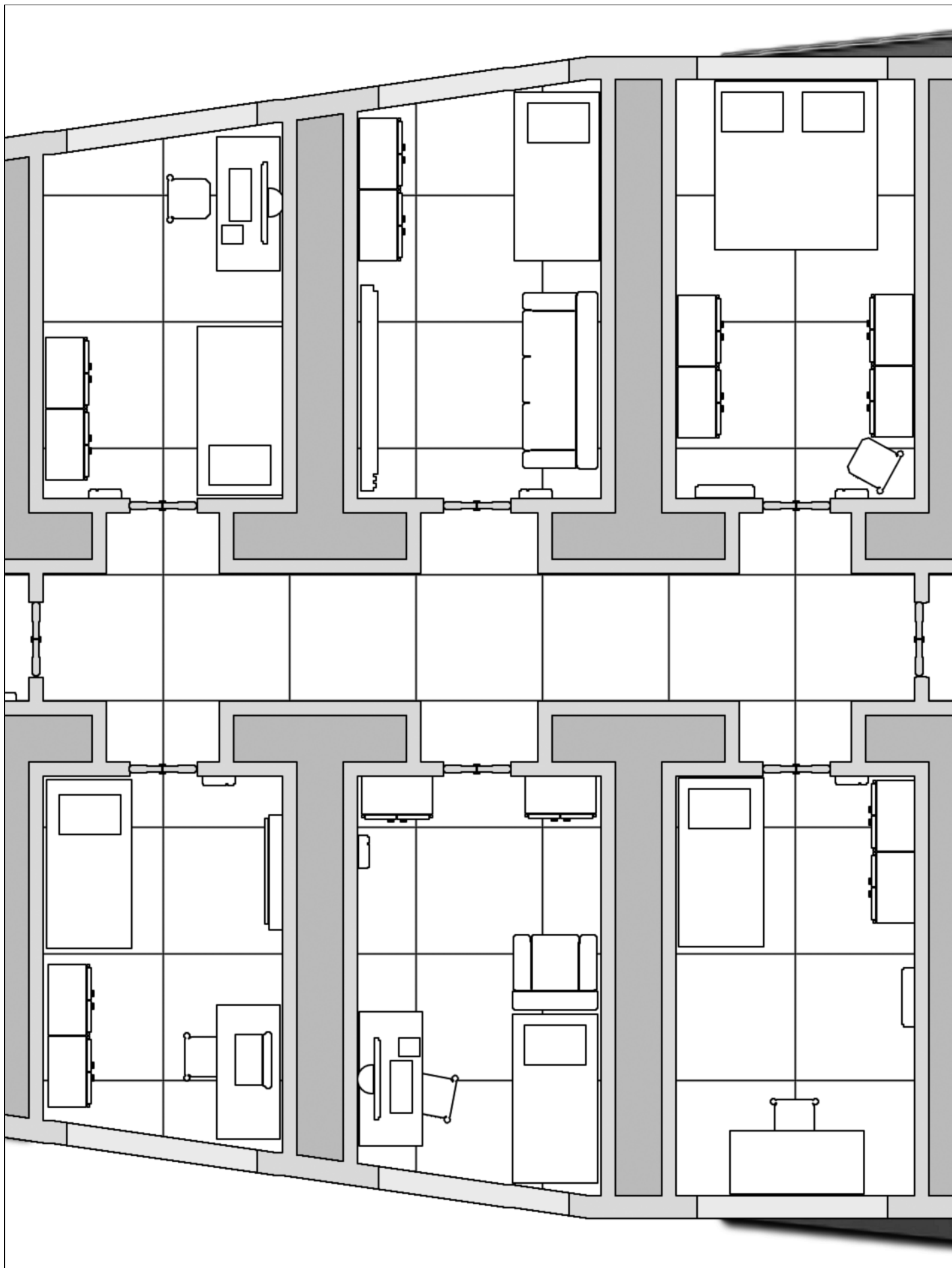
Note that a couple of the middle pages of the main deck are rotated 90 degrees so that they will fit on a portrait-oriented page. Examine the composite image on the next page to see how the map sections should be oriented when put together.

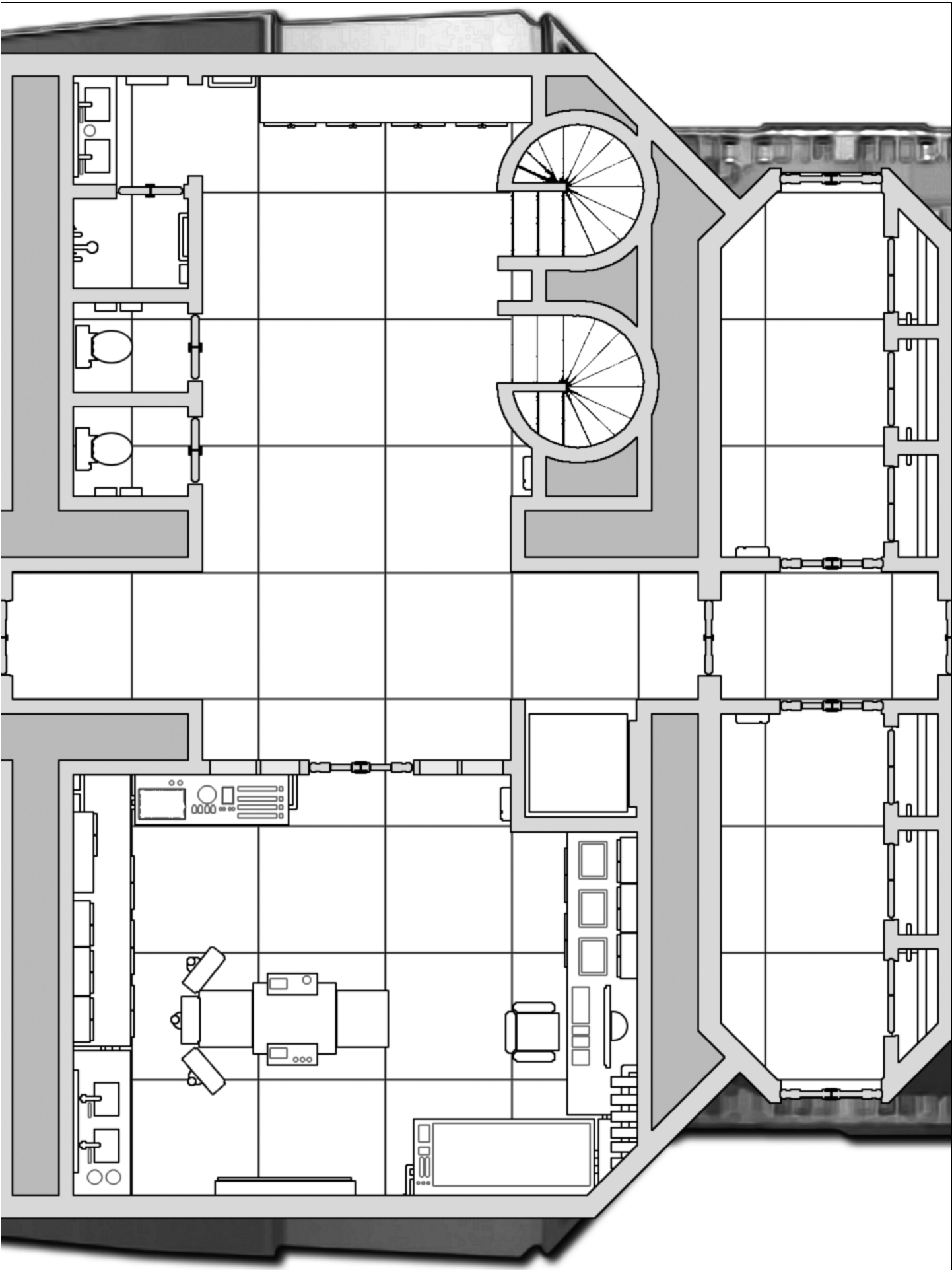
Copyright © 2009 Ryan Wolfe. Permission is given to print this document for personal, non-profit use.

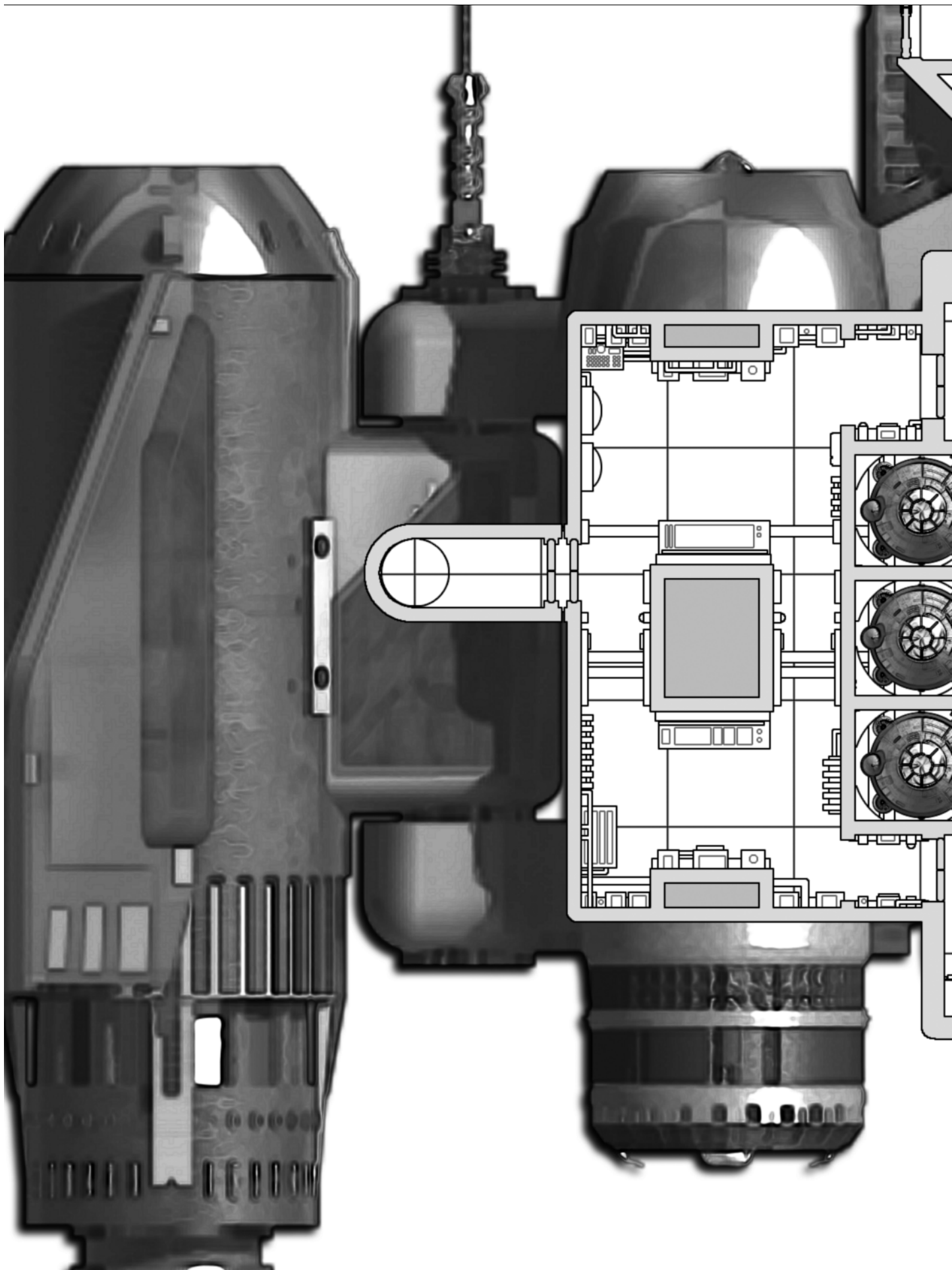


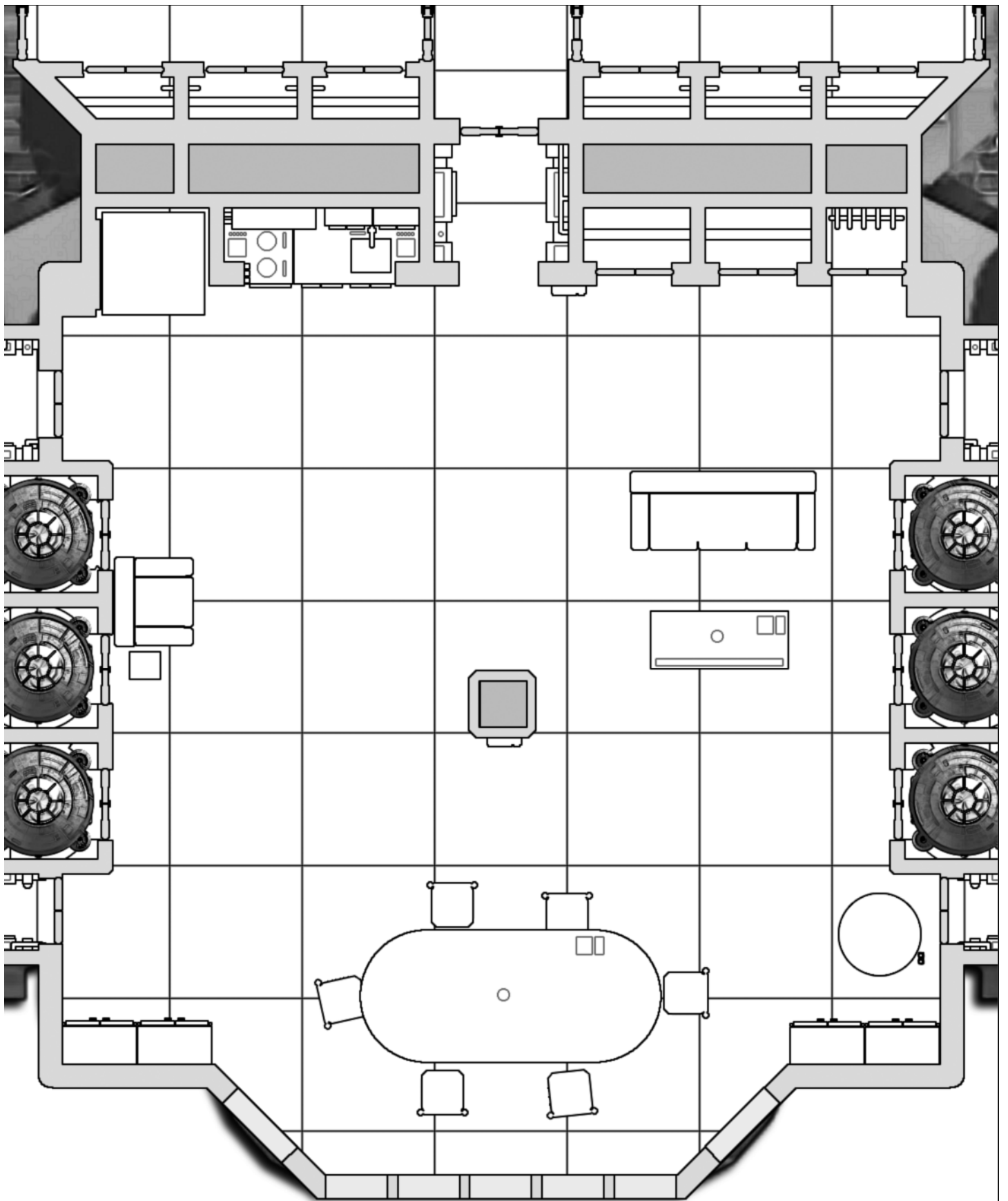


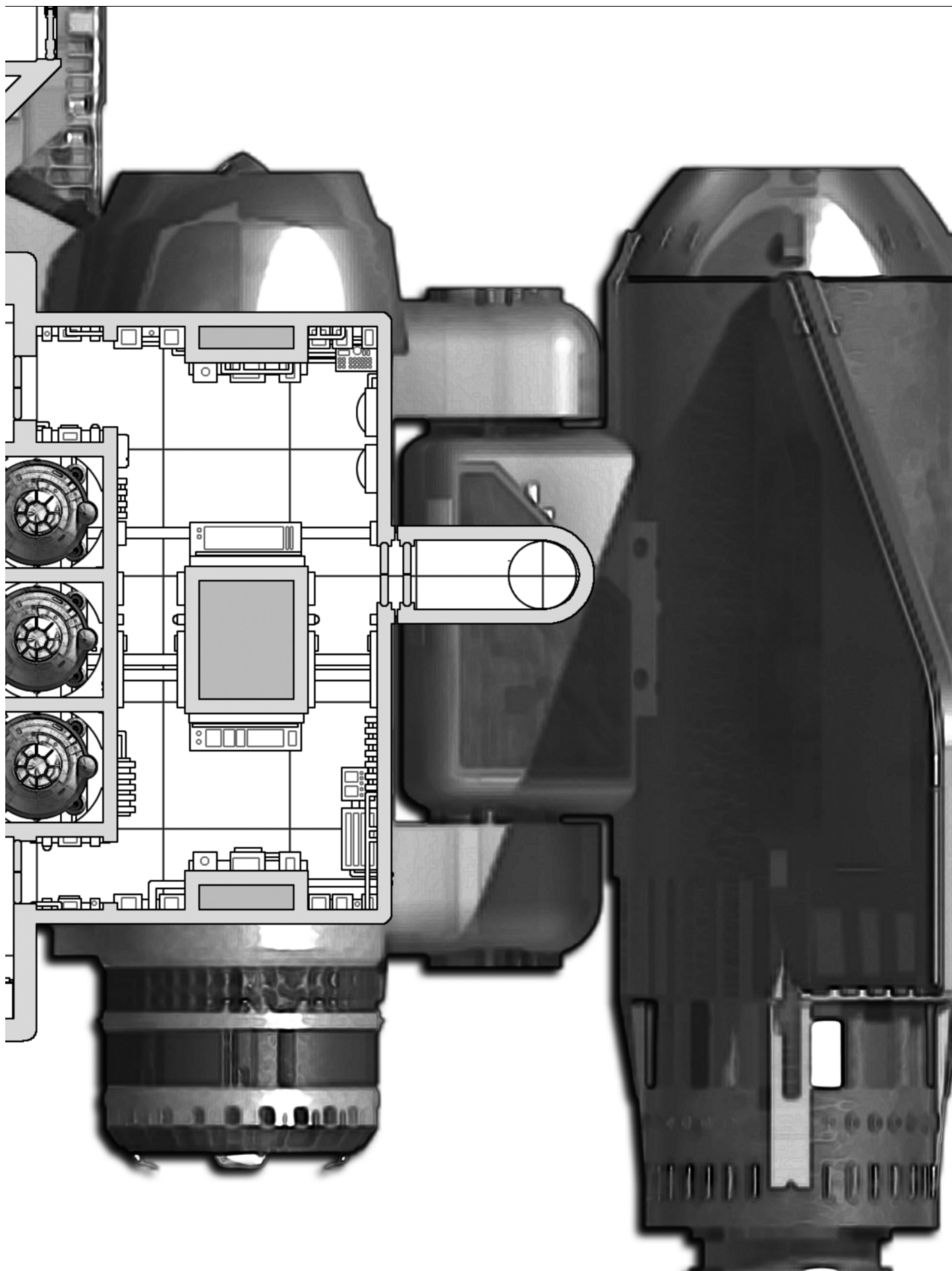


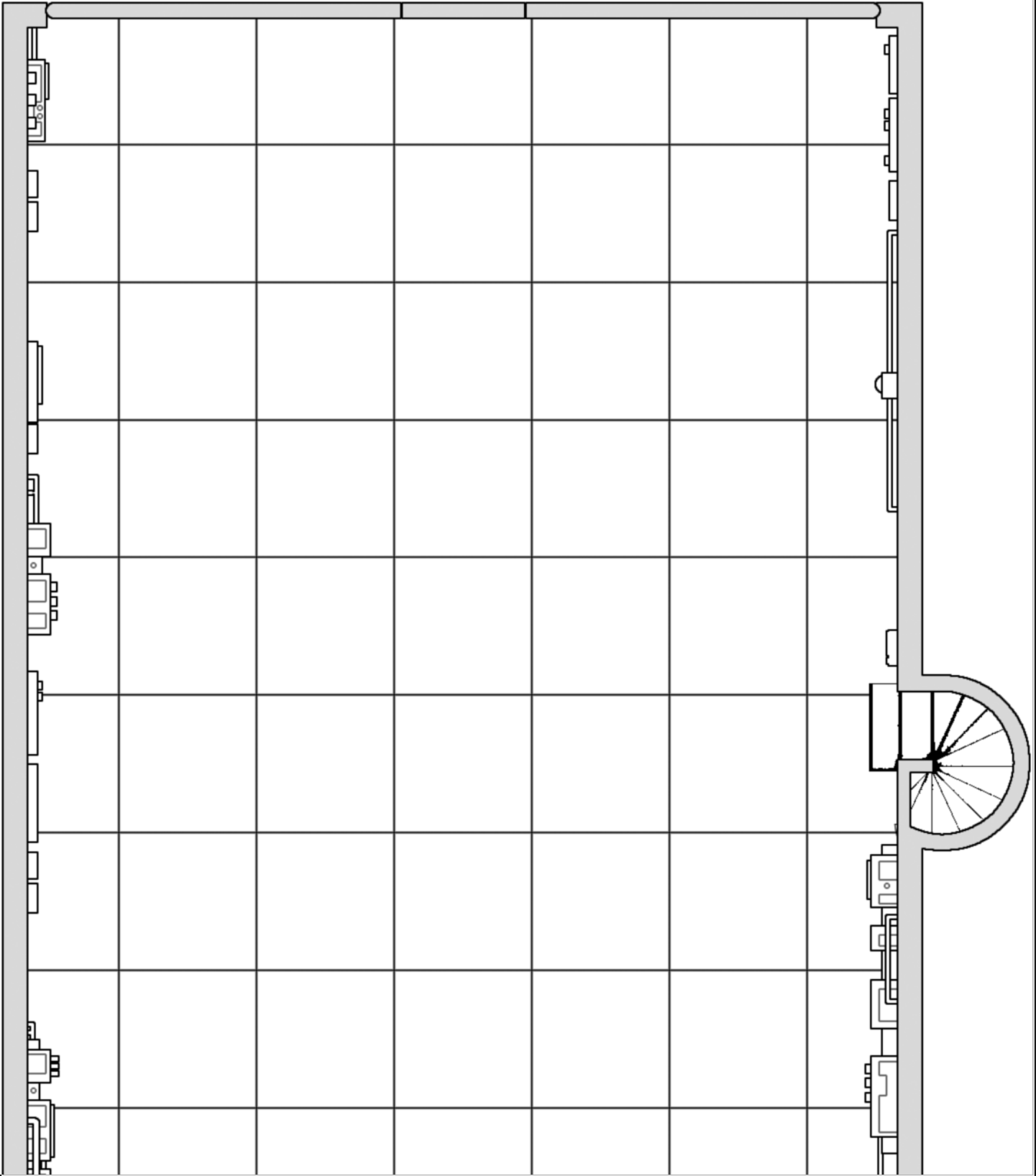


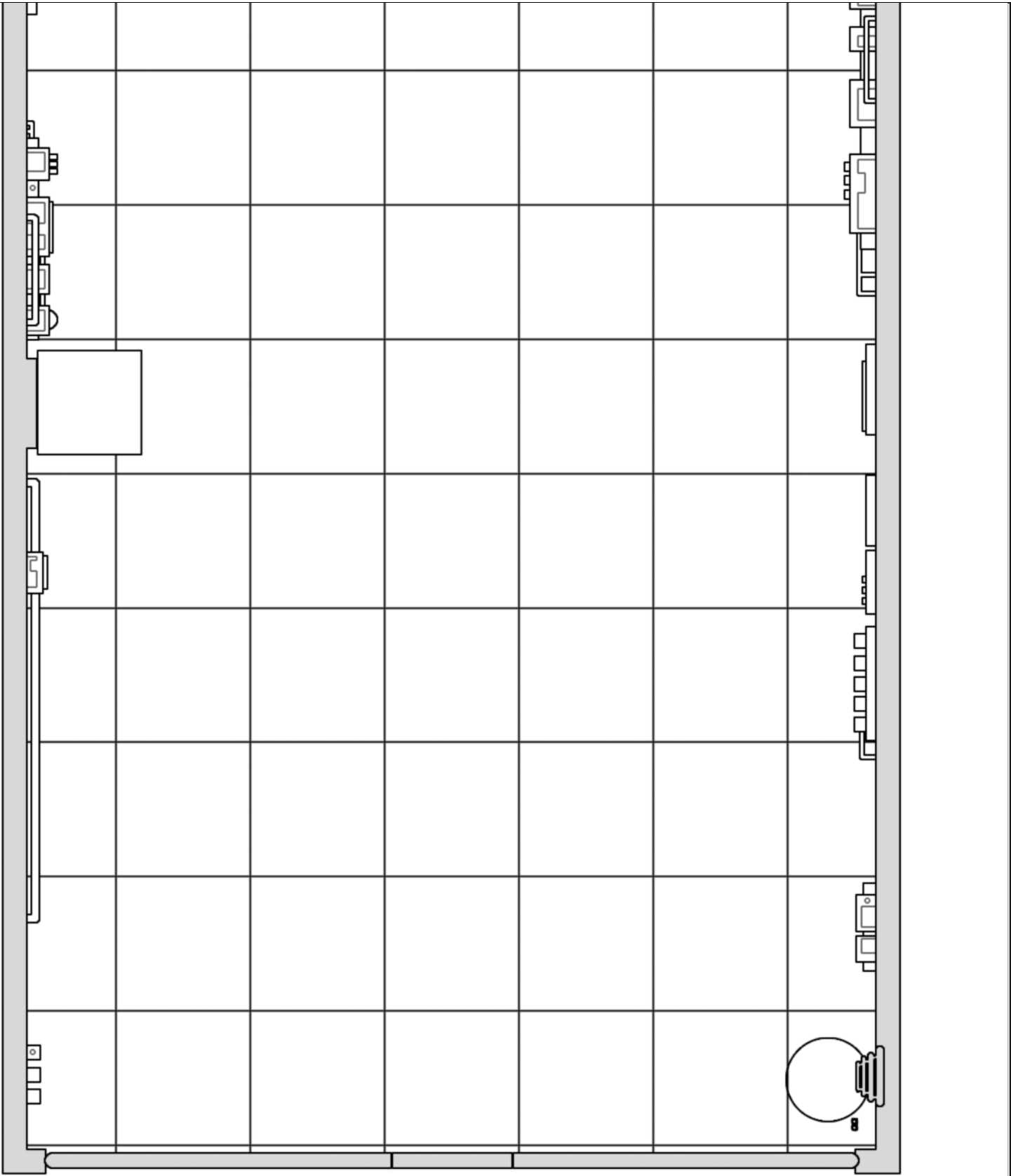












Alternate and Variant Pages

