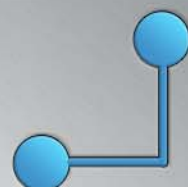
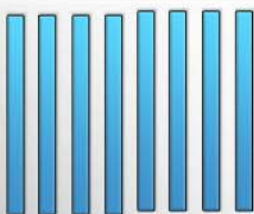


FUTURE
ARMADA



TALON

MAPS



Talon & Wyvern

This document contains the interior maps for both of the craft from this installment of Future Armada.

Talon has two decks. The upper deck is presented first, from front to back; and then the lower deck map pages are presented. A variant page for the lower deck is provided to turn the detention center into an empty storage room. Another pair of pages are provided to replace the forward part of the lower deck with empty hold space (creating a Lelantos delta class ship).

Lastly, pages are provided for the 7XR ground car and a pair of shipping containers. These are to scale so that they can be cut out and placed in the hold if desired. Interior maps for two varieties of container are included.

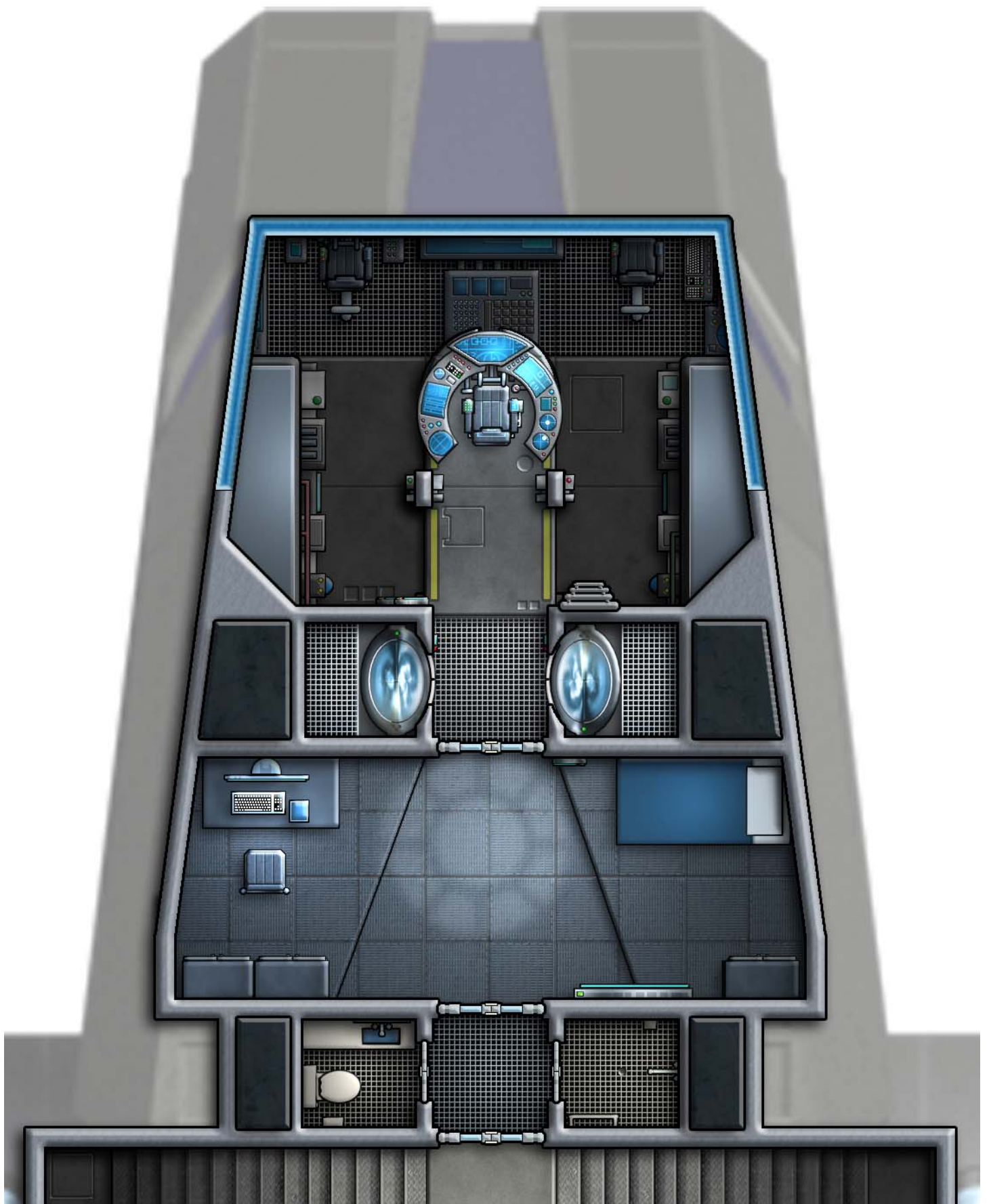
The Wyvern alien hybrid is a single page map and is presented at the end of this document.

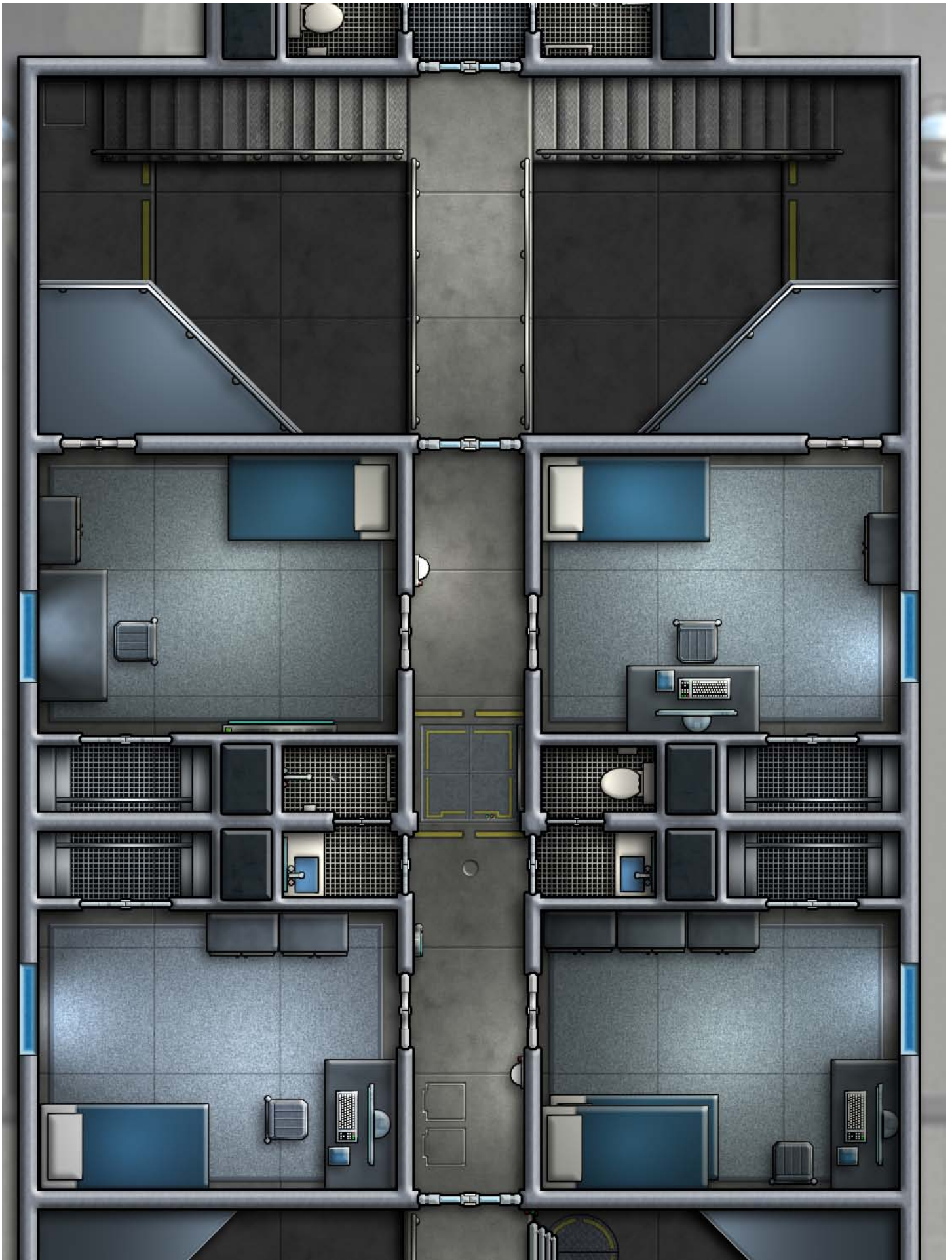
The tactical maps in this document are designed for use with miniatures; the squares represent 5ft spaces and the areas are laid out so that the pages can be cut and then put down edge-to-edge as needed. Note that there is overlap on the maps to facilitate taping. If the pages are going to be put down exactly edge to edge, then this overlap should be trimmed accordingly.

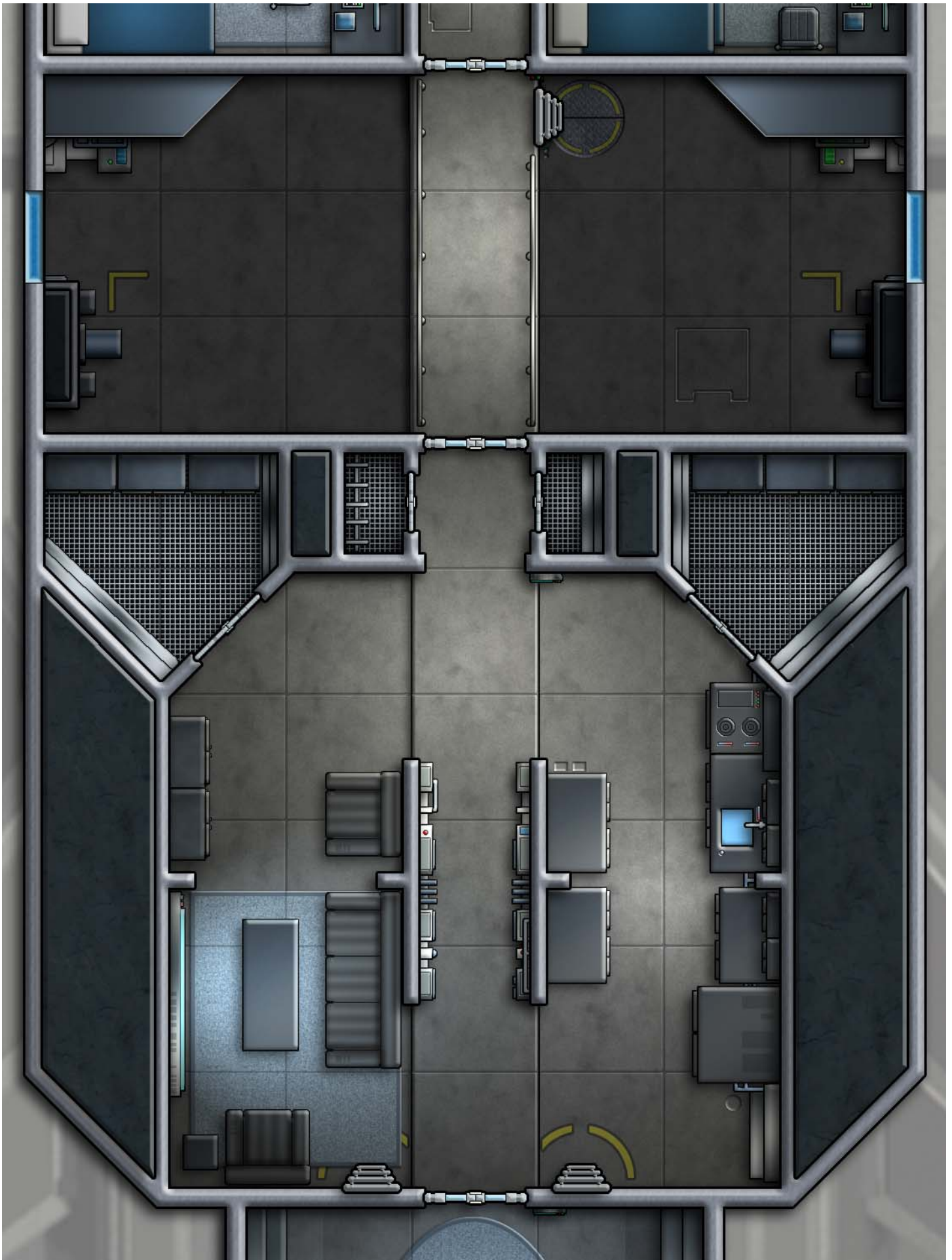
This document was created in its entirety by Ryan Wolfe, © 2010. Permission is given to reproduce these maps for personal, non-profit, use.

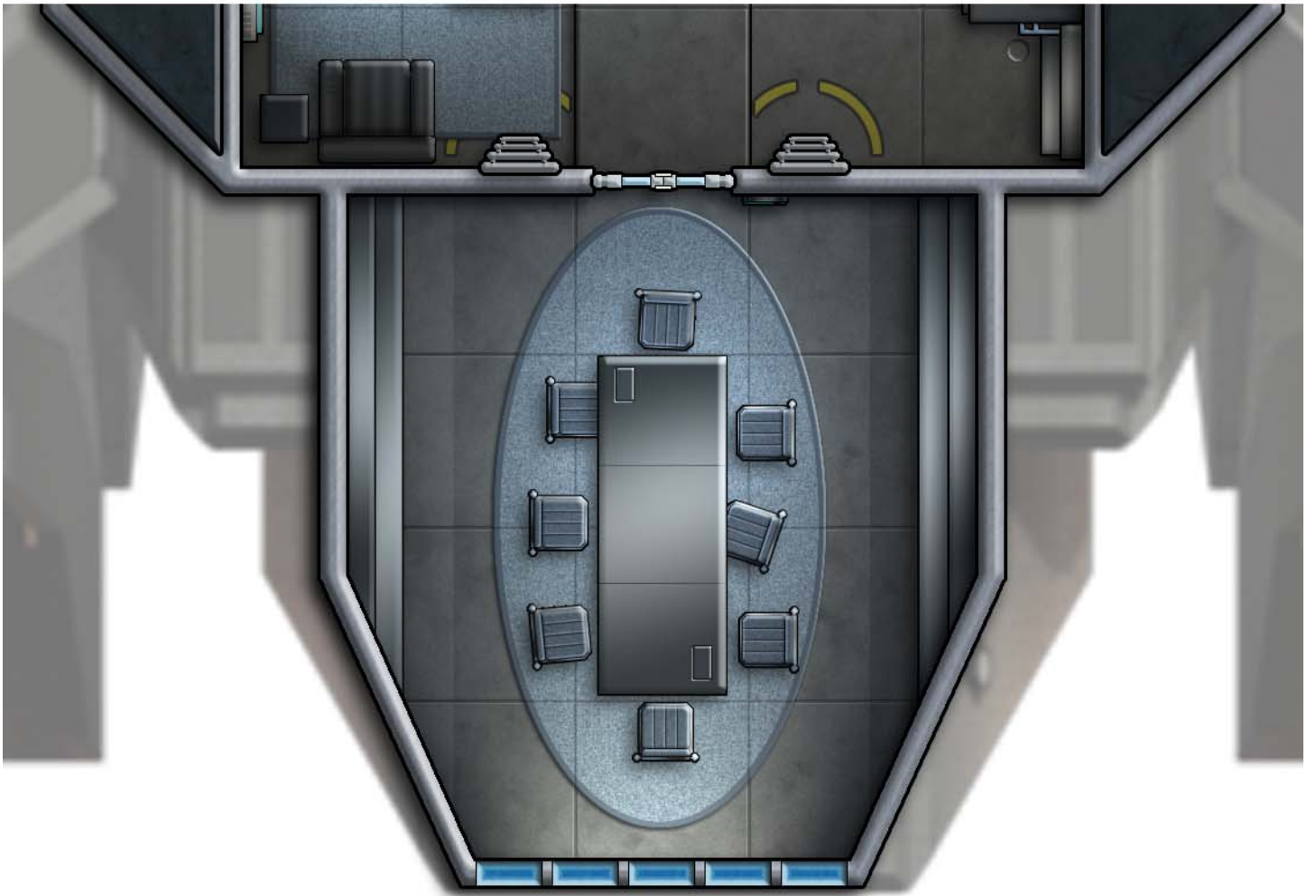
Talon

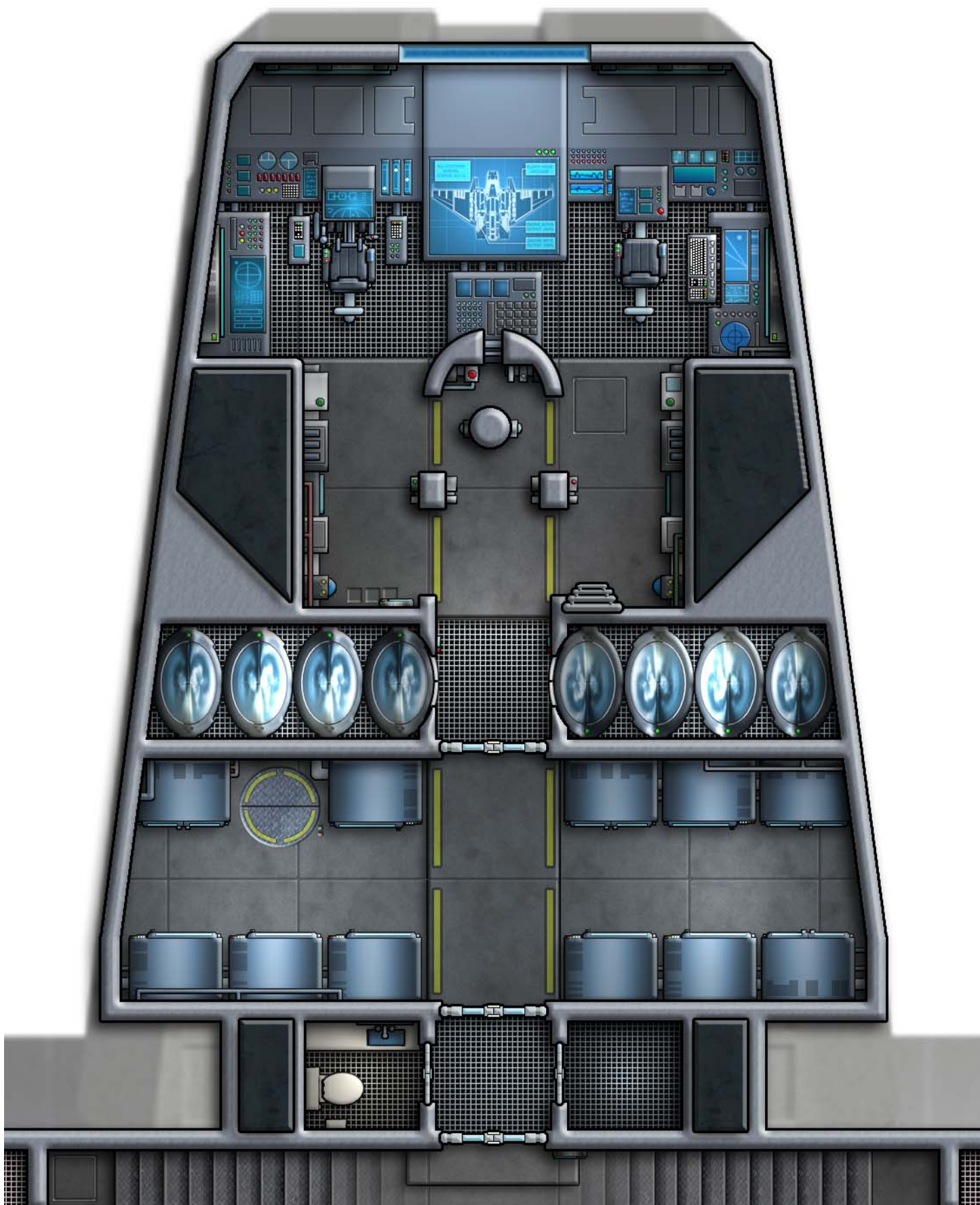


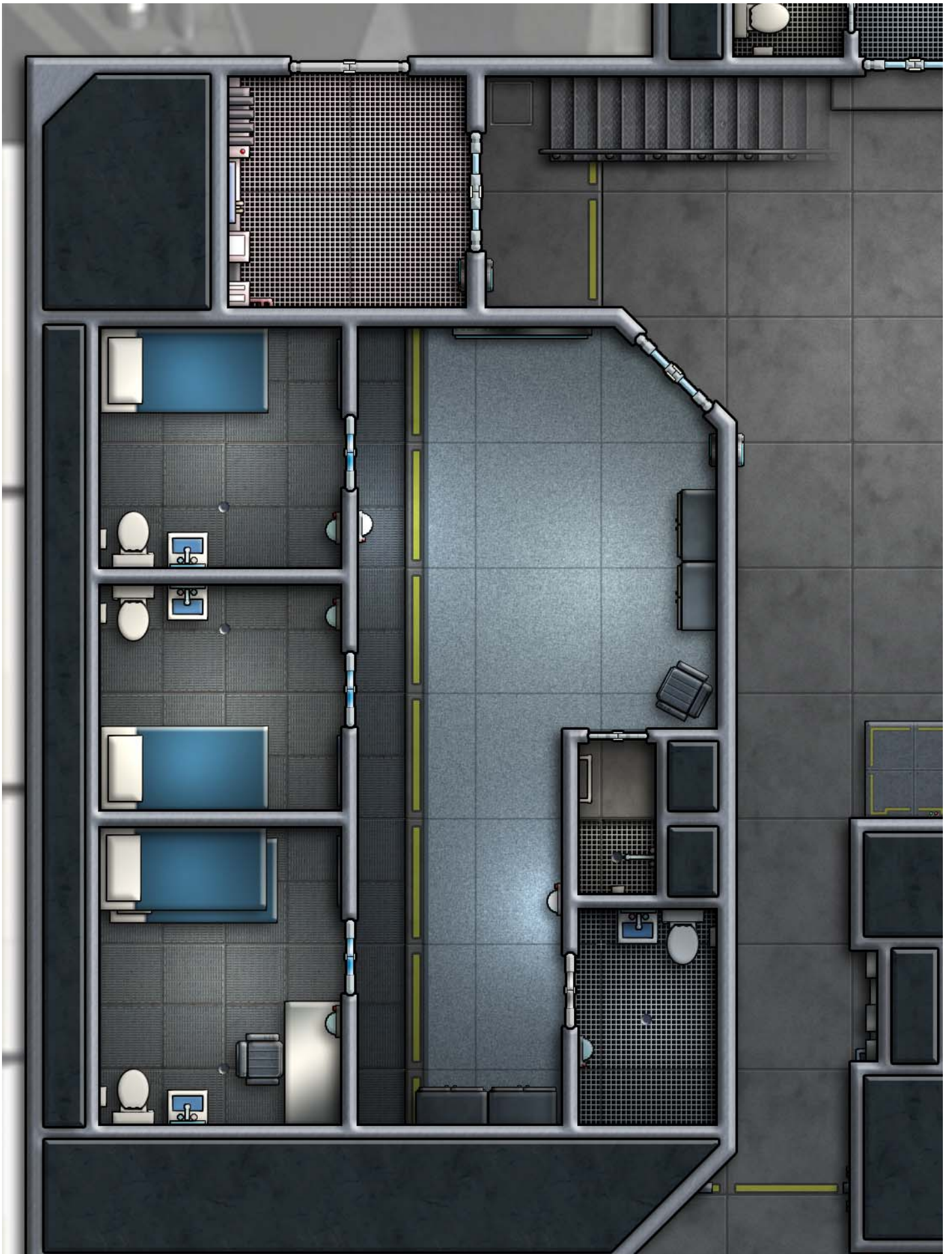


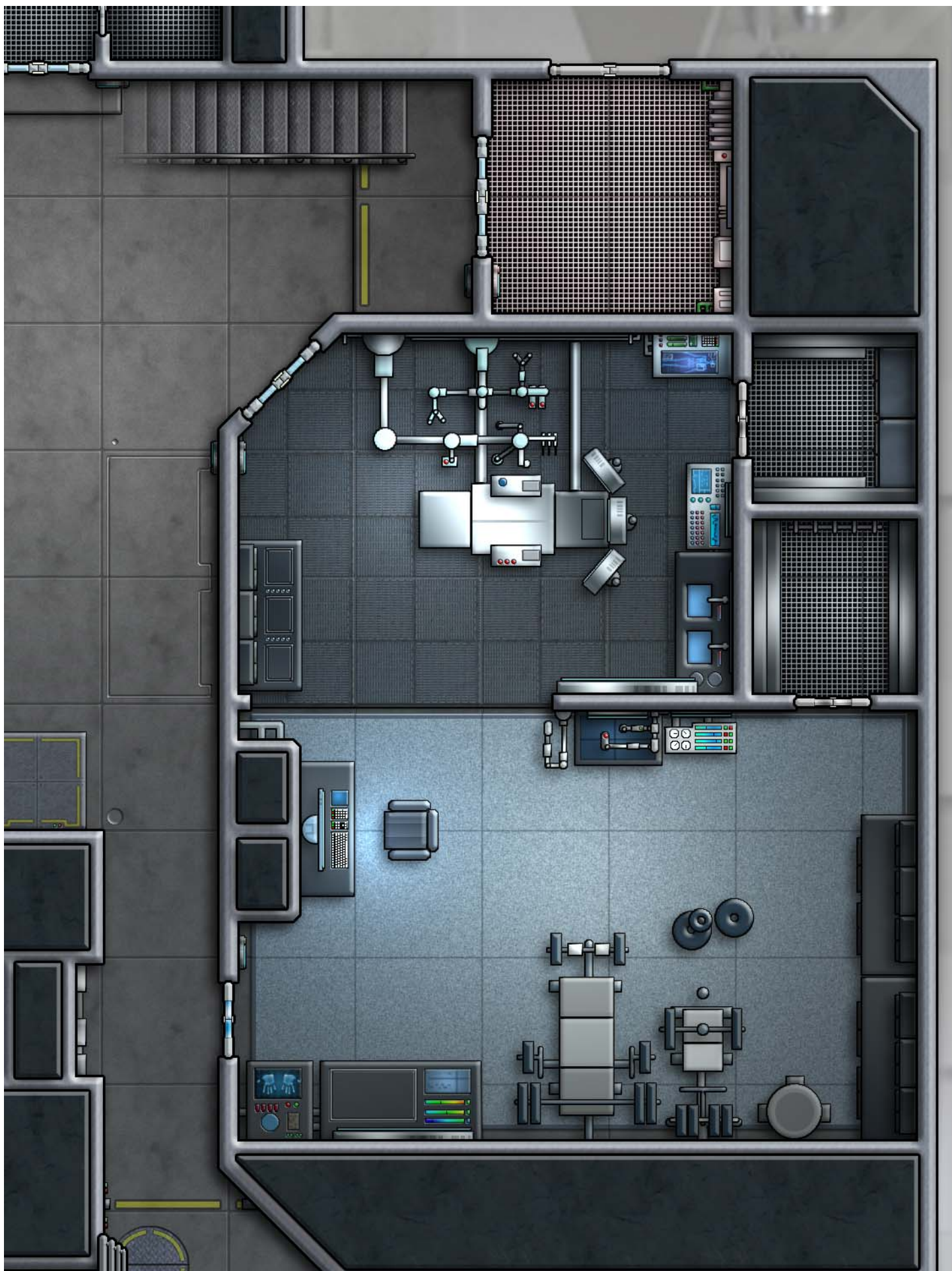


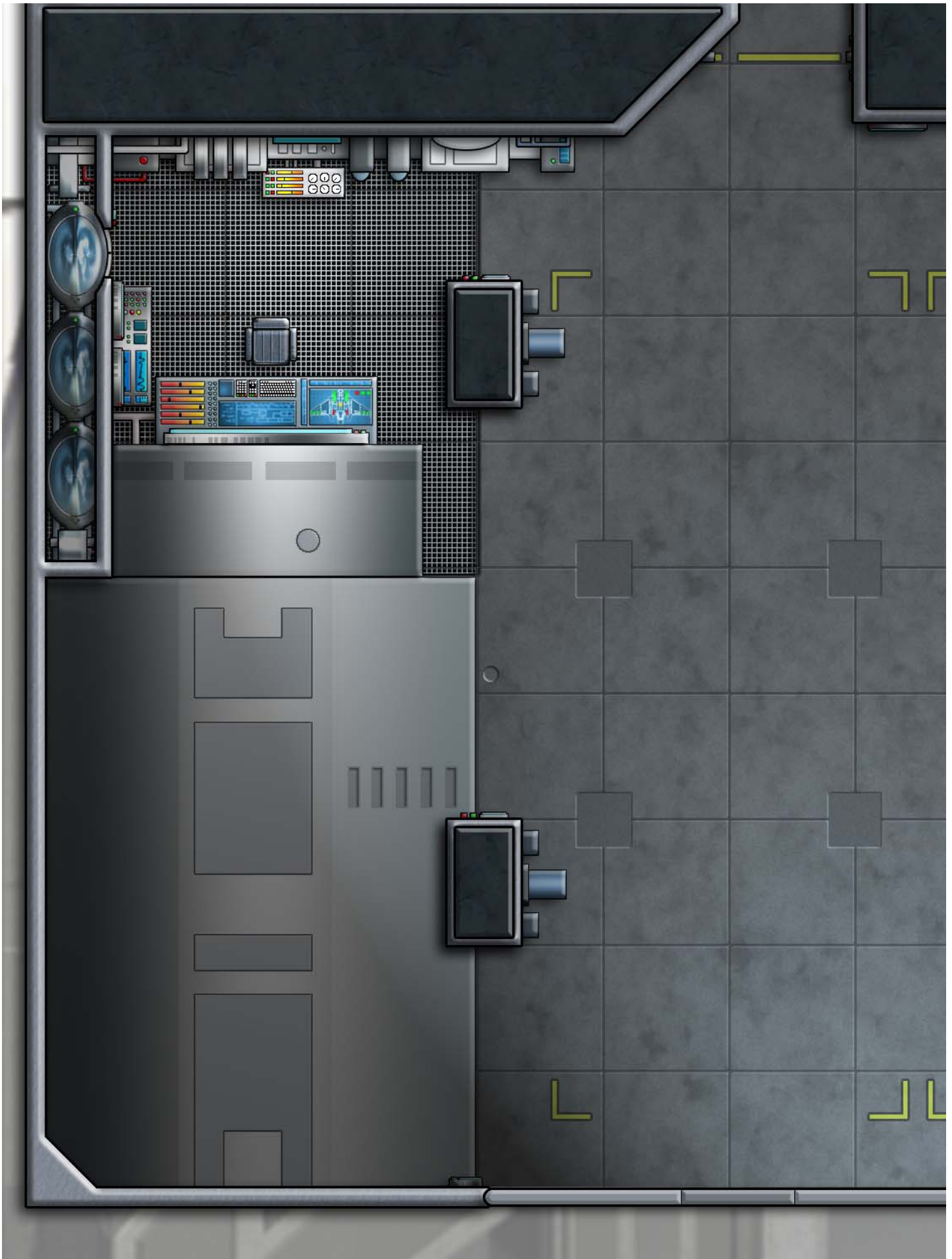


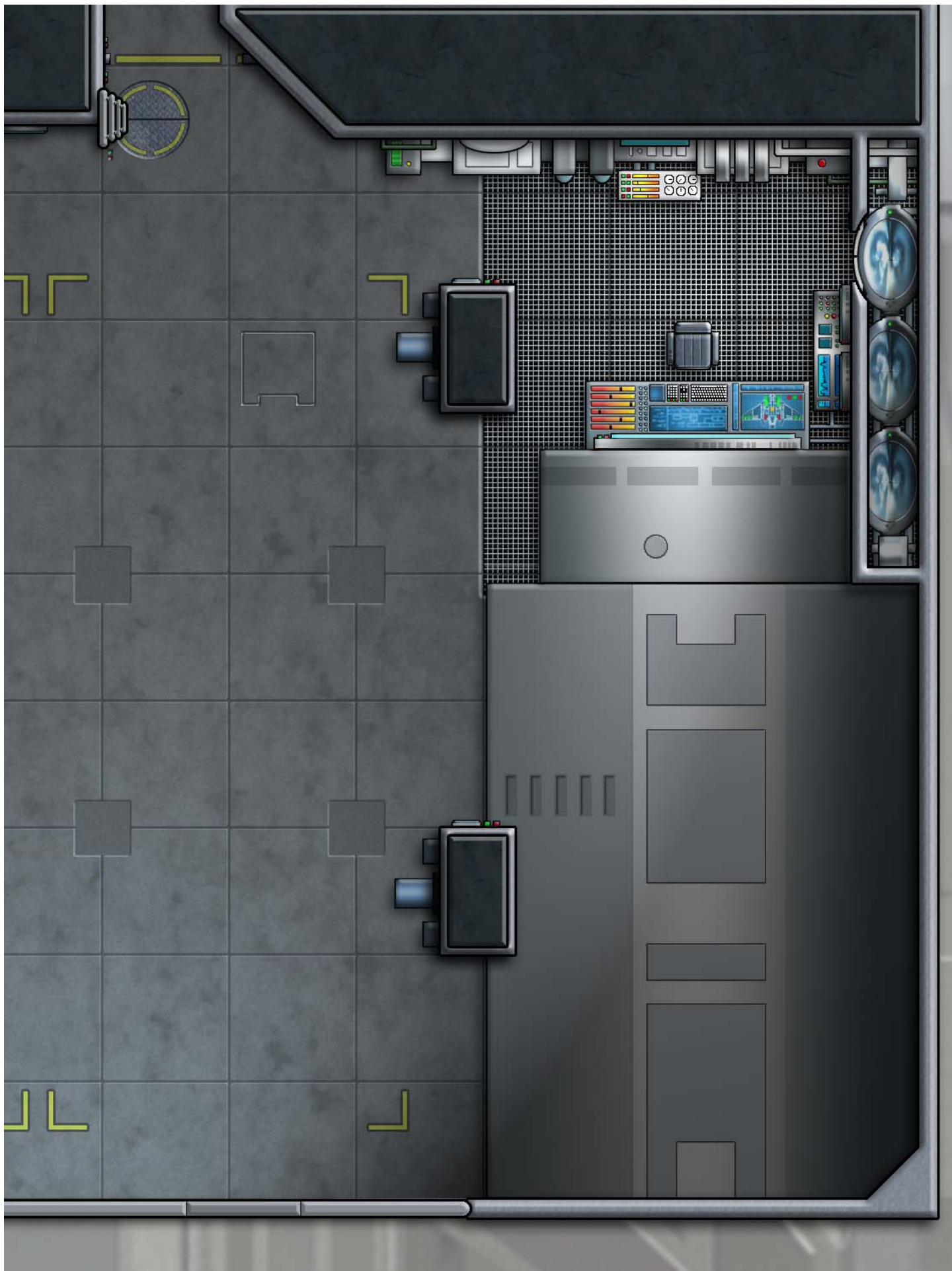




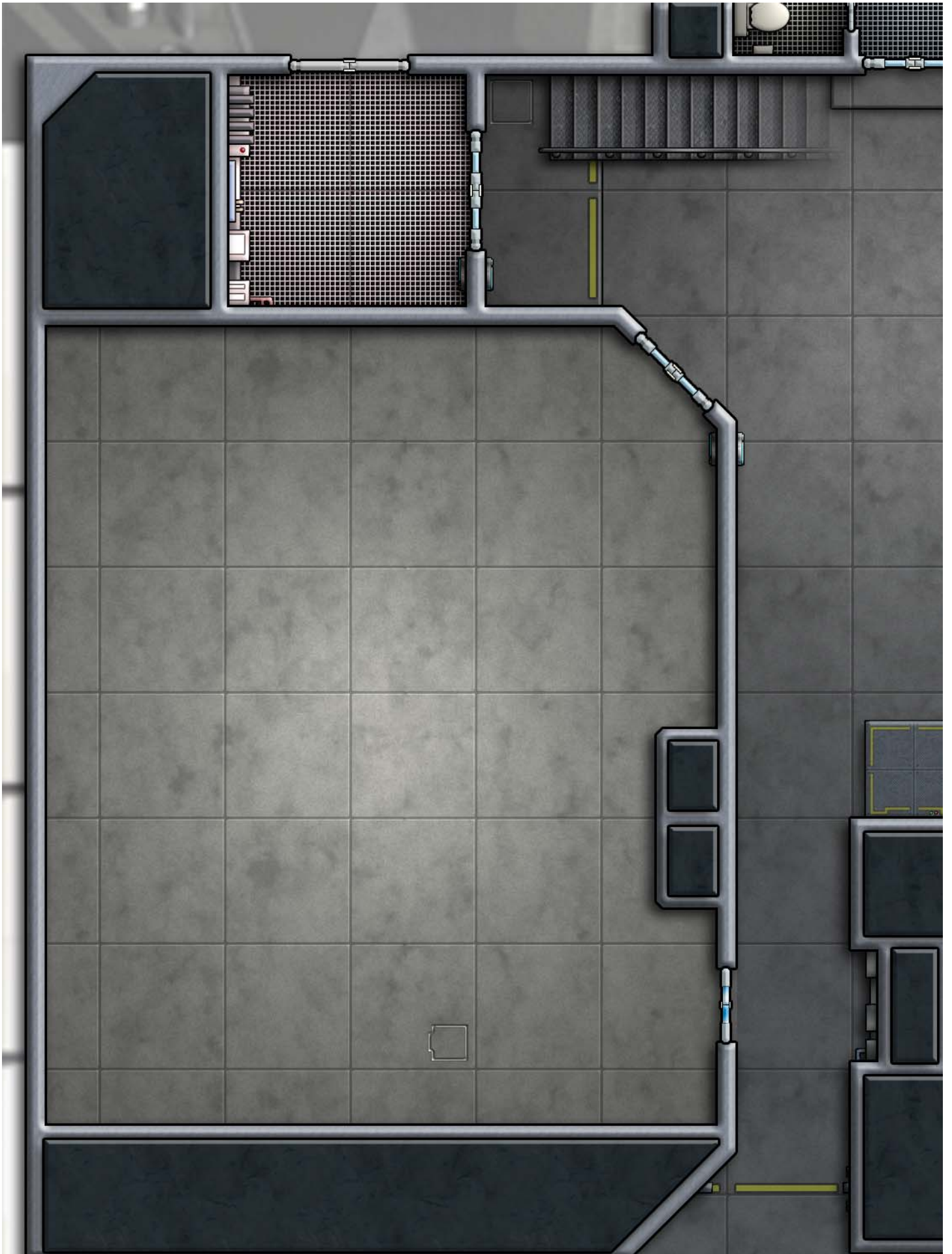








Alternate and Variant Pages

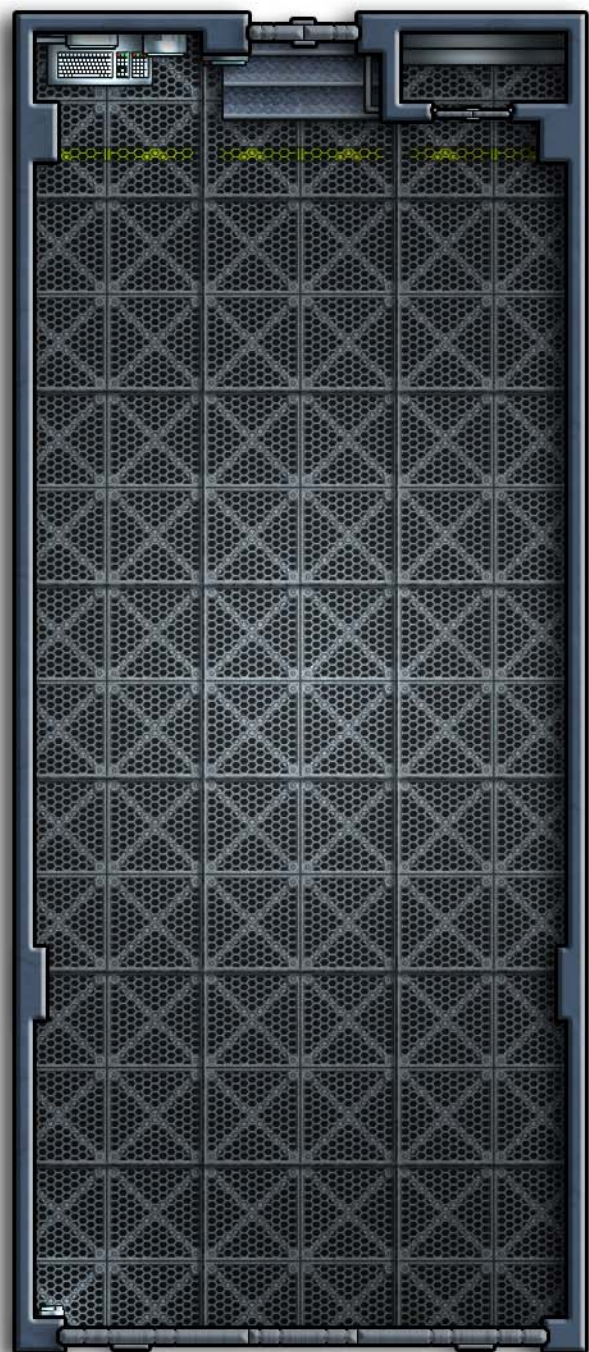


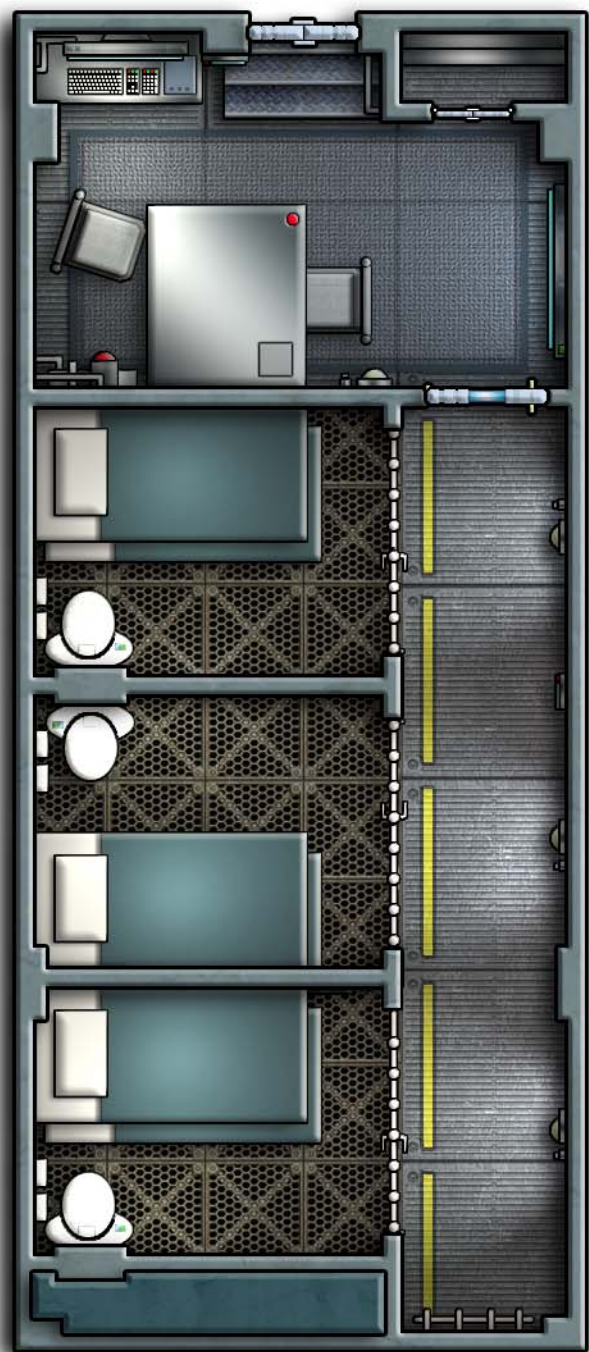












Wyvern



