

E-Z DUNGEONS

Welcome to the E-Z line of card models from Fat Dragon Games!

First and foremost, I wish to thank you for purchasing this set. Without your support, Fat Dragon Games would not be in business. Our web site www.fatdragongames.com features built up photos of our model sets, special free downloads and more. I sincerely hope this model set brings you and your gaming group many hours of enjoyment.

Tom Tullis
President
Fat Dragon Games

Now, on to the modeling...

We have made every attempt to design the models you have purchased to be as easy as possible to assemble. Yes, we realize there may be more efficient way of designing several of these pieces, but ease of assembly for the novice card modeler was our primary concern. Before you can construct your model, you will need some basic supplies:

Glue: While white school glue (Elmers) will work on these models, this type of glue contains too much water to make really nice looking models (it warps the paper). We recommend a good quality glue stick or even better a liquid paper glue pen. We use UHU OFFICE PENS for our models-the applicator puts a small amount exactly where you want it and it has a non clog tip. You can get these from www.saunders-usa.com

Base material (optional): All of the models shown in our photos have been mounted on black foam-core. This is cheap (about \$2.50 for a 20x30" sheet at discount stores). This will weight your pieces down so they don't easily move if the table is bumped.

Card stock: You will need a supply of white letter size card stock. This is available at any office supply or discount store in the school/office supply section.

Tooth picks: These come in handy to apply glue to small areas.

Wet paper towels or hand wipes: Very useful to clean your fingers off whenever you get glue on them. This will keep you from getting excess glue on your models.

Colored markers: A black, gray and brown marker is useful to touch up white edges on your finished model.

FAT DRAGON GAMES

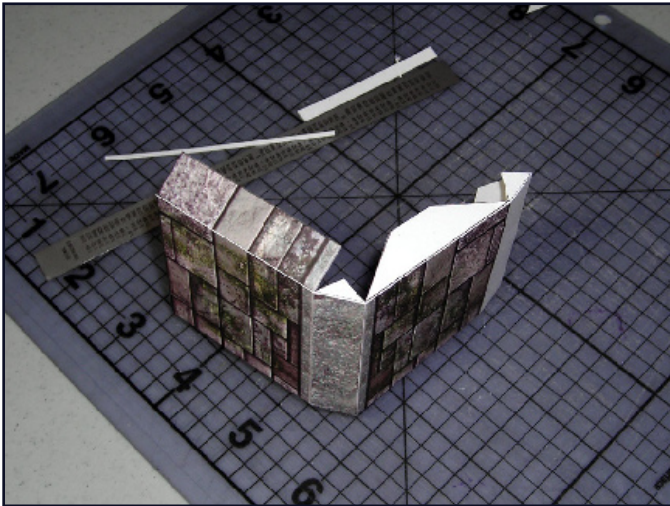
Making Fantasy Fantastic

DISCLAIMER: Fat Dragon Games urges our customers to exercise extreme caution when cutting

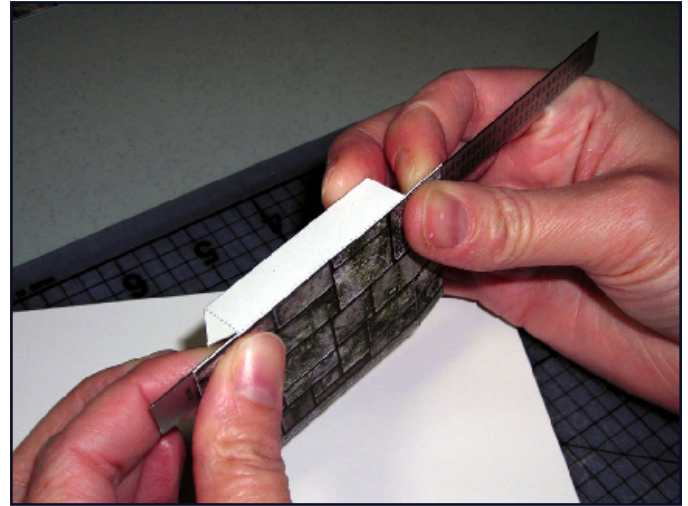


Hobby knives (should you use them) are extremely sharp and must be used with the utmost care and caution and should never be used by children. Fat Dragon Games is not liable for misuse or accidents.

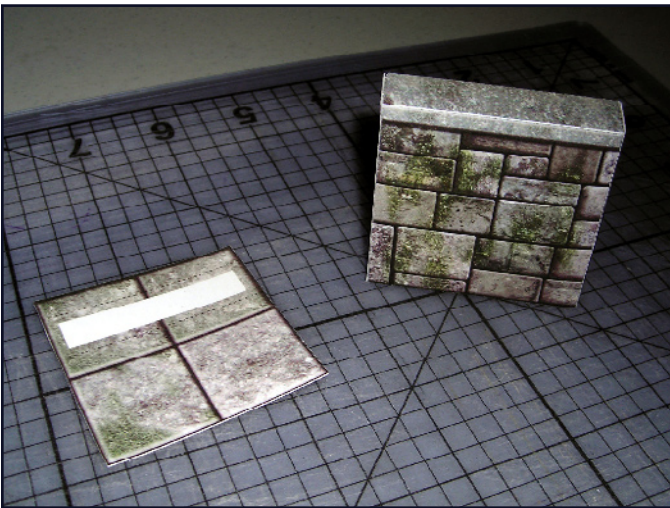
While the models shown in this basic instruction booklet are from our E-Z Dungeons Basic Set, the same principles apply to all of our E-Z model sets. Before cutting each piece from the page, we recommend you first score all of your fold lines (dashed lines) by lightly dragging the knife across them. Do not apply pressure and just let the weight of the knife break the surface of the paper without cutting completely through it. Any fold lines that require rear scoring are designated by small blue arrows at the score points. Simply cut a small 'tic' mark at each edge of the dotted line so you can see it from the back and then score the line. Test fold your model into its final shape prior to gluing and make sure all parts fit when they should. If this is your first card model set try one of the smaller wall sections first. This will teach you all of the basic skills necessary to assemble slightly more complex pieces.



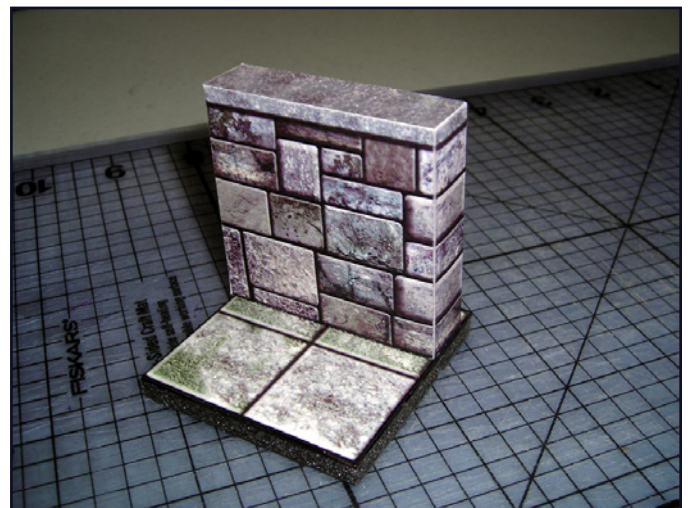
1: After cutting and scoring the piece, test fold to final shape.



2: Glue the bottom edge tab first and allow to dry. You can insert a small ruler inside the model to help hold the inner while it dries.

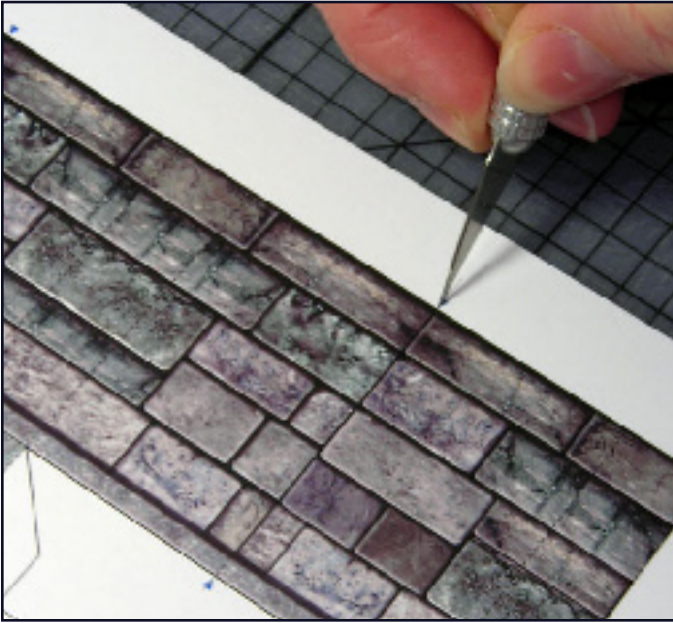


3: Once the bottom tab is dry, glue the two side tabs. While these are drying you can glue the floor piece to a section of foam-core art board (we recommend using black foam-core).

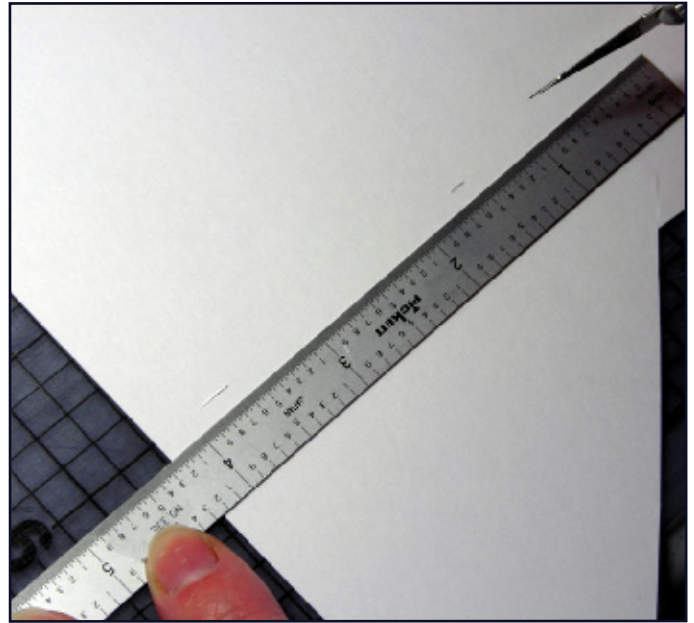


4: When both subsections are dry, just glue the wall to the floor. You may also wish to 'edge' the floor piece with a black marker.

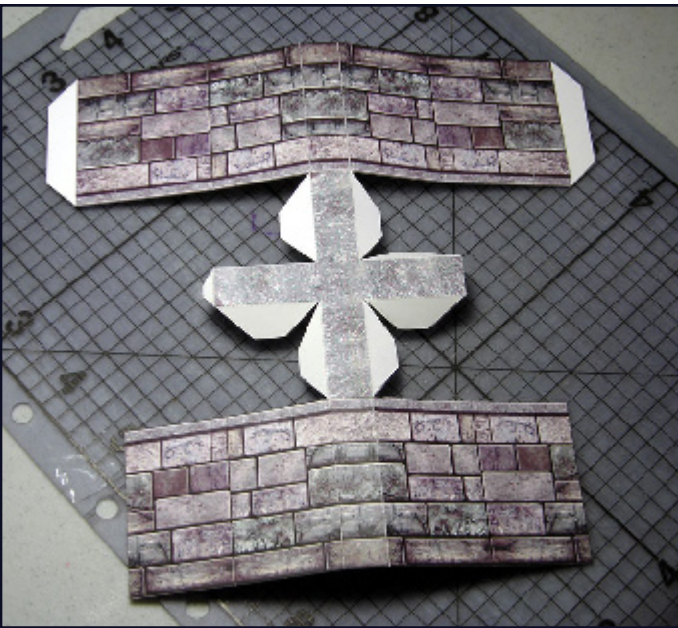
Some of the other wall sections may appear to be more difficult to complete, but if you follow the same steps as with the basic wall section they will go together quite easily. Here is an overview of constructing the 'X' corner model.



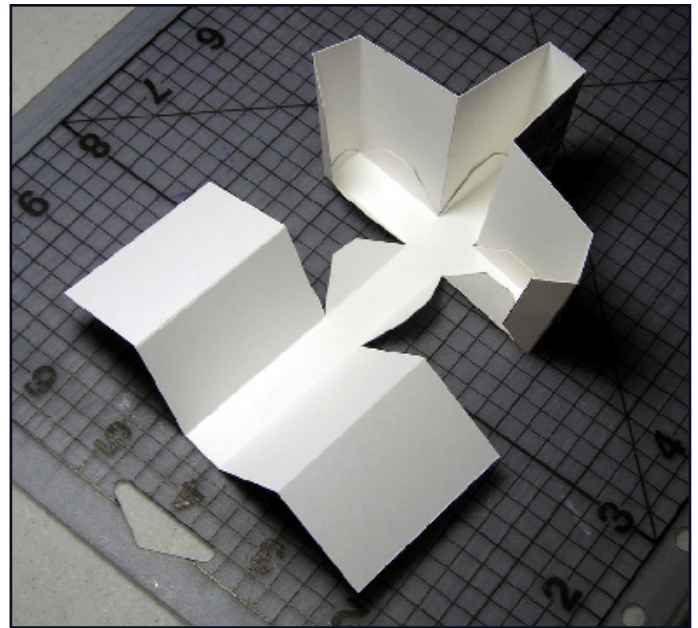
1: Start your 'X' corner by cutting a small 'tic' mark everywhere there is a blue arrow.



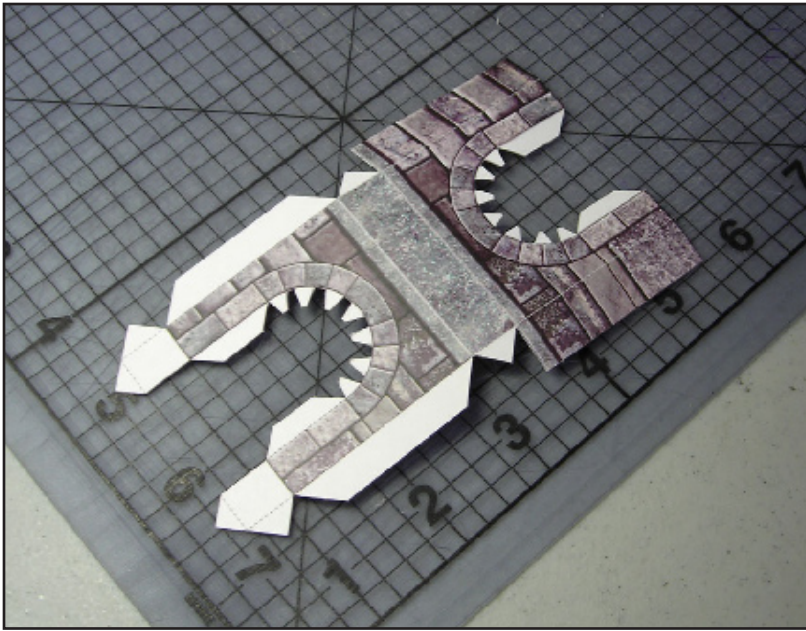
2: Flip the model over, align your straight edge along the two tic marks and score. Once all of the reverse scoring has been completed and can proceed to cut out the model.



3: As with the basic wall sections, always test fold the entire model prior to applying any glue.



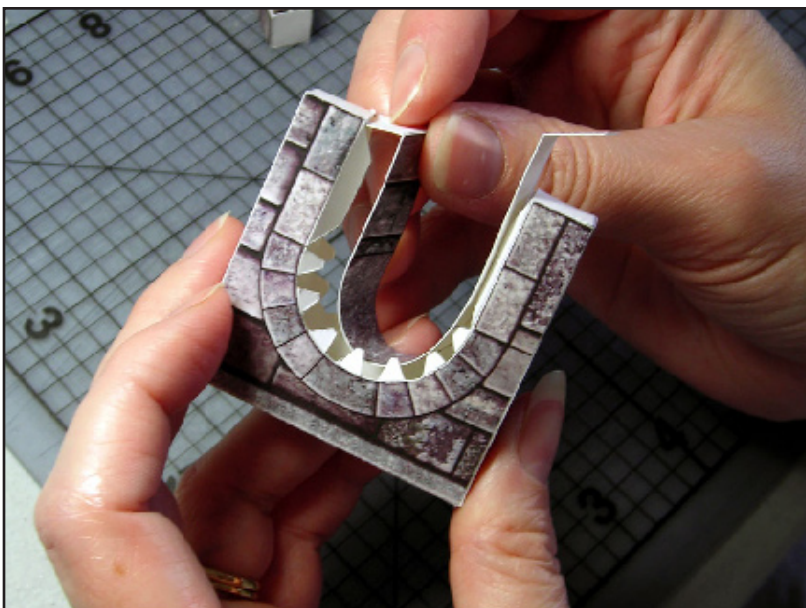
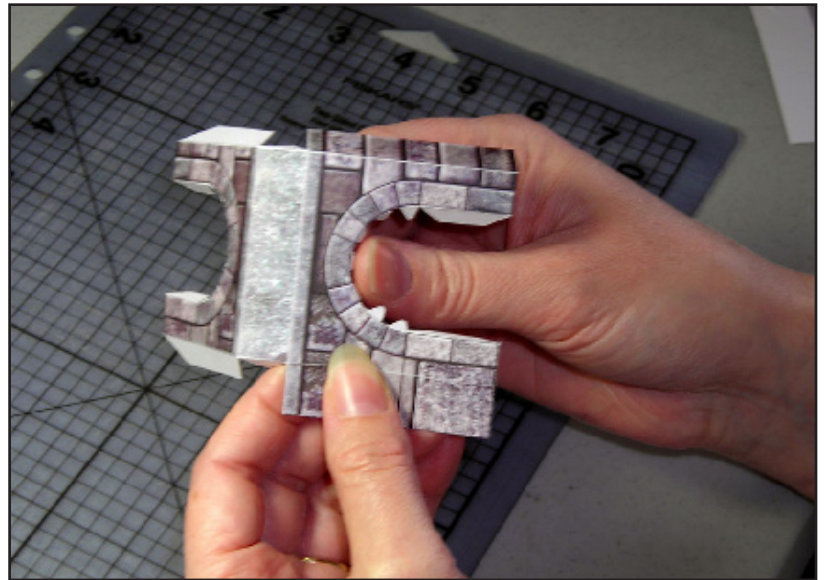
4: With the more complex models it is essential that you do not rush and work in stages, gluing only a few tabs at a time. Finish the model in the same way as the basic wall sections.



The open arch is another model that will go quite smoothly if you follow a few simple steps.

1: Score and test fold the model to verify it will fit properly when glued.

2: Make sure all of the saw-toothed glue tabs fold cleanly. This will ensure you have an even edge all around the arch.



3: Glue the main arch model together first. When dry test fit the inner opening strip to make sure it fits properly before gluing. Once you are satisfied with the fit start by gluing one end, allow to dry, and slowly work your way around the circumference of the arch.

Finally, we tackle what many of you may consider to be the most intimidating model in the set, the curved wall section. It's not hard if you know a little trick. When making the curved wall pieces we recommend making a 'form' out of a scrap piece of foam core (use the top or bottom wall piece as a template). Glue the wall ends together and let dry. Then insert the foam-core form into the wall. This will give it the curved shape and maintain it while you glue the upper and lower pieces to it.



Once the form has been inserted, begin gluing the bottom piece. Only glue a couple of tabs at a time and wait for them to dry. Once dry, you will be able to glue the top in only a couple of steps as the wall will be holding its shape better with the spacer inside and the bottom glued in place.