

E-Z DUNGEONS

EXPANSION SET I I

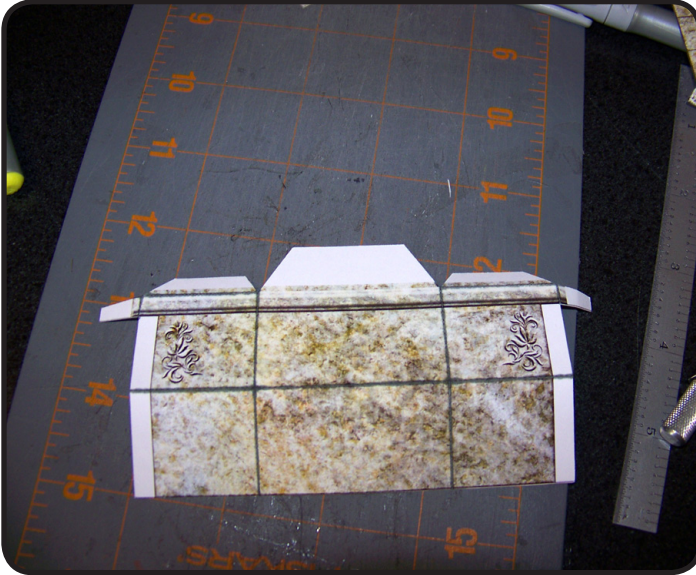


Before proceeding with this document, make sure you have read the beginners guide to card modeling included with this model set!

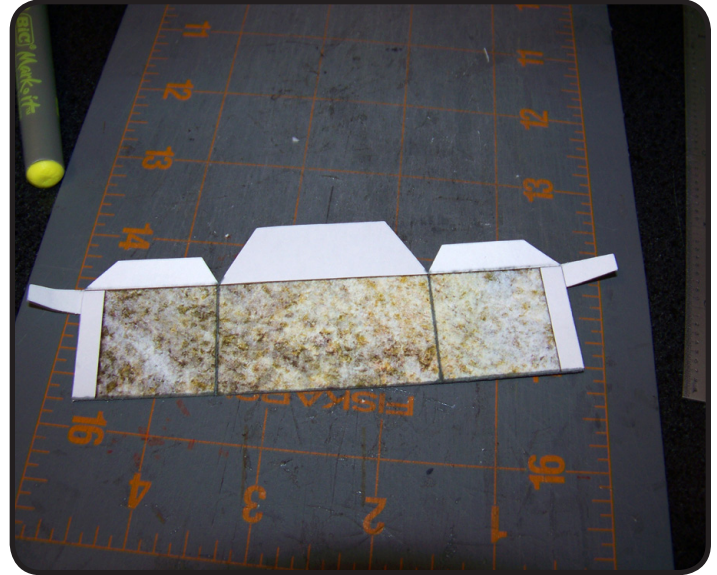
FAT DRAGON GAMES

E-Z DUNGEONS

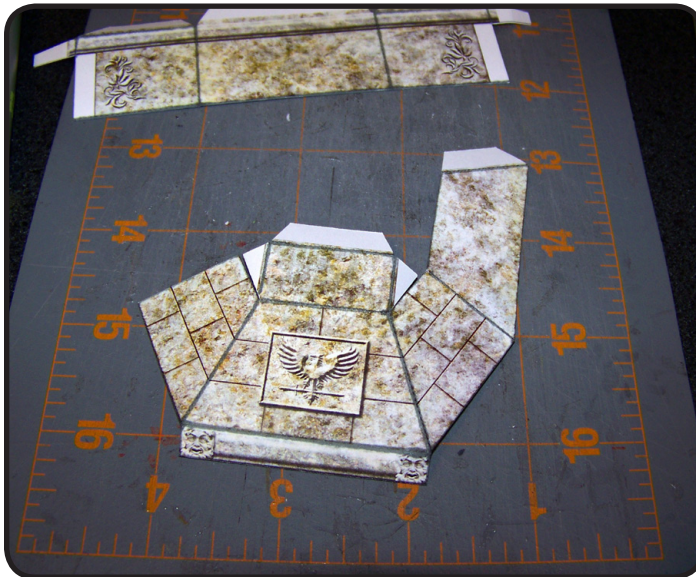
Large Fireplace



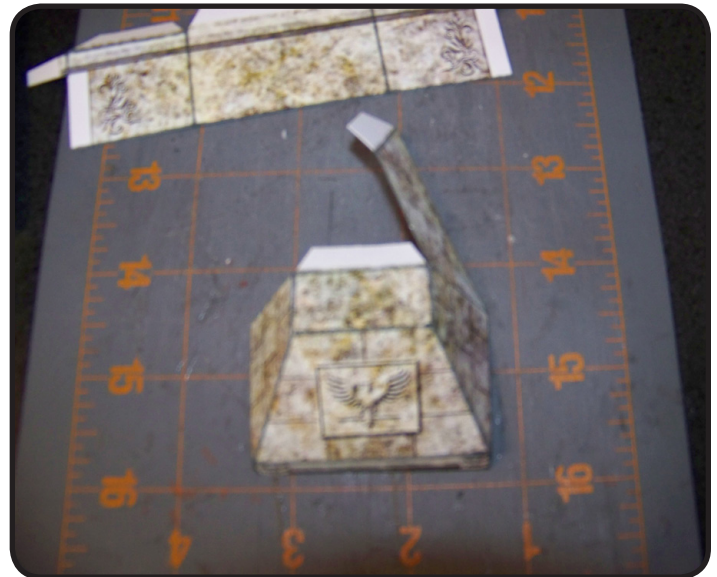
1: Cut, score and test fold the lower section of the fireplace as shown. Also edge with a gray marker at this time.



2: Fold in half and glue.

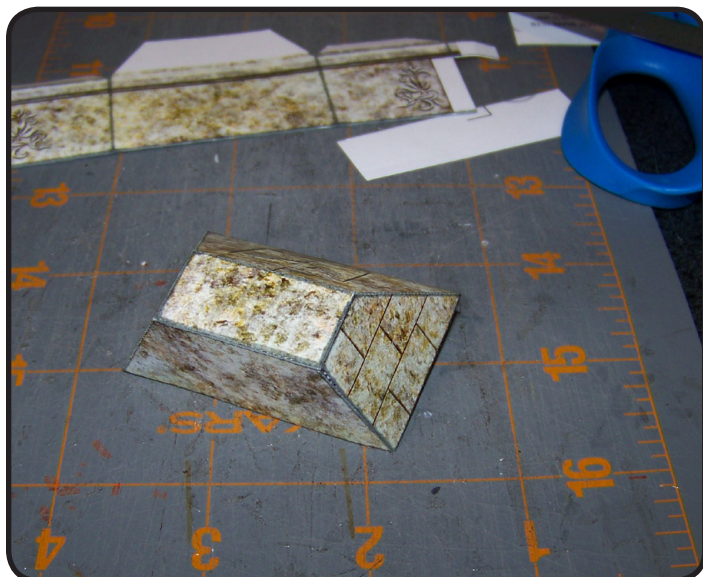


3: Cut, score and test fold the upper section of the fireplace as shown. Also edge with a gray marker at this time.

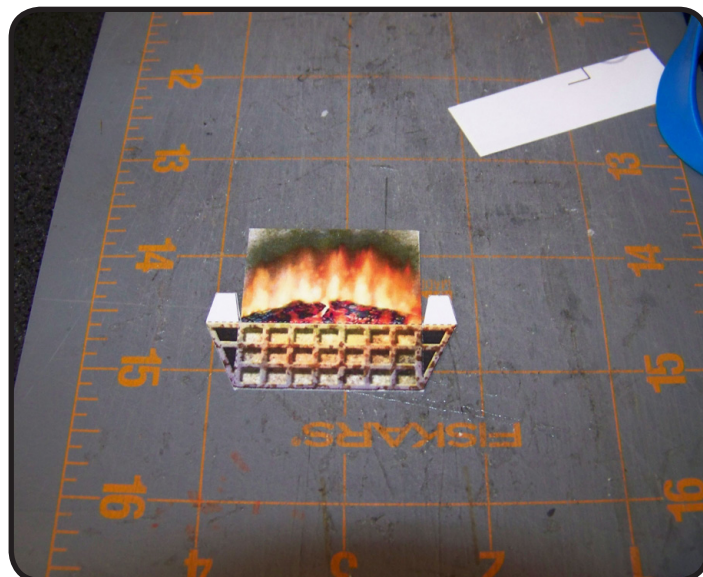


4: Glue the two side tabs to the top flap first.

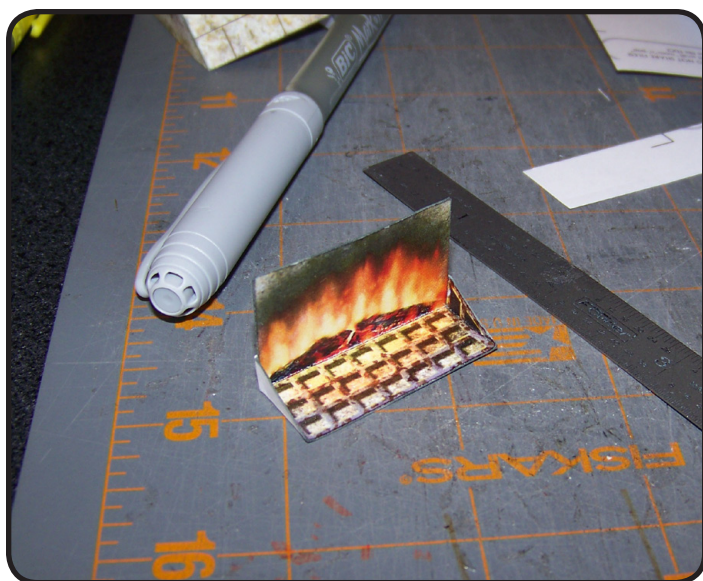
E-Z DUNGEONS



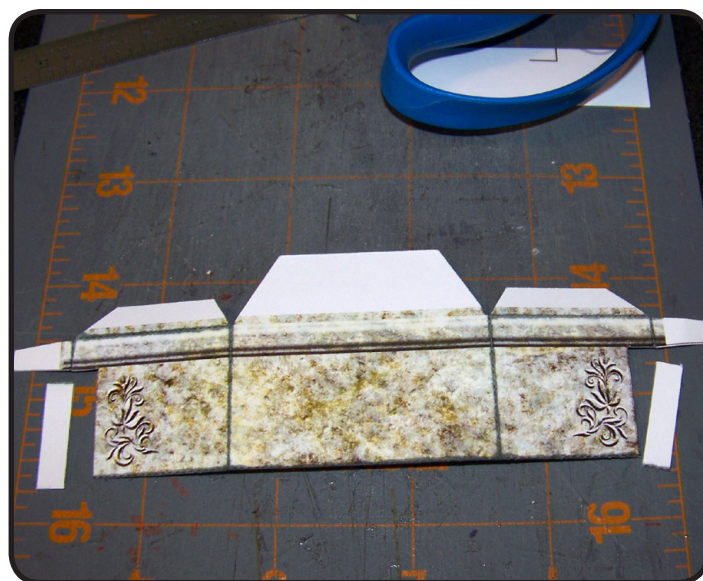
5: Finish the upper section by gluing the rear flap as shown.



6: Cut out the interior piece as shown above.



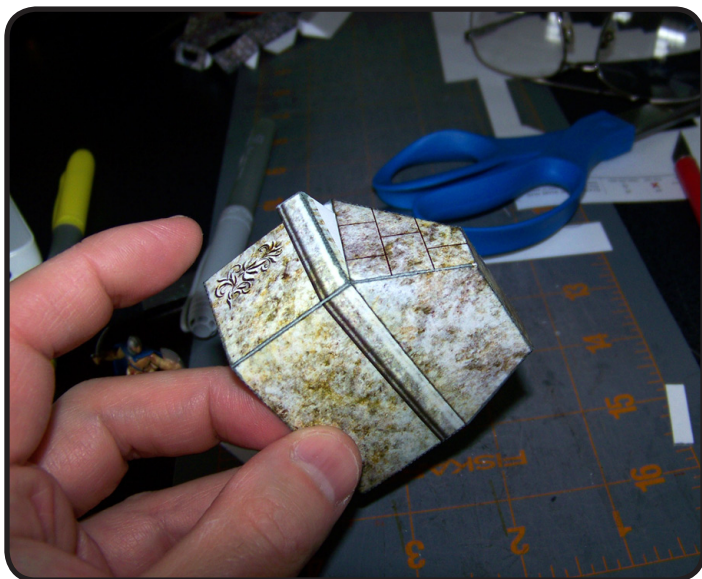
7: Fold and glue the side flaps.



8: Once the lower section is COMPLETELY dry, cut away the two white rectangles at either side.

FAT DRAGON GAMES

E-Z DUNGEONS



9: Glue the rear edges of the upper and lower pieces together.



10: Finish by gluing the side and front tabs.



11: Cut, score and test fold the small fireplace as shown. Also edge with a gray marker at this time.

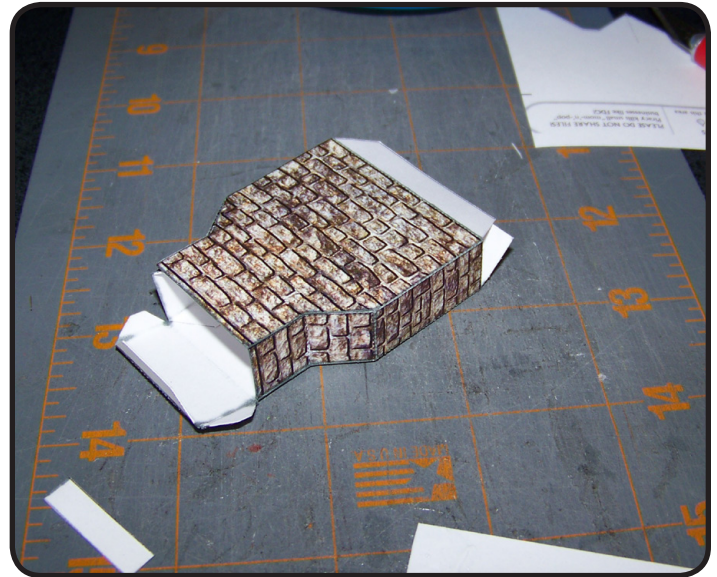


12: Begin by gluing the side tabs as depicted above.

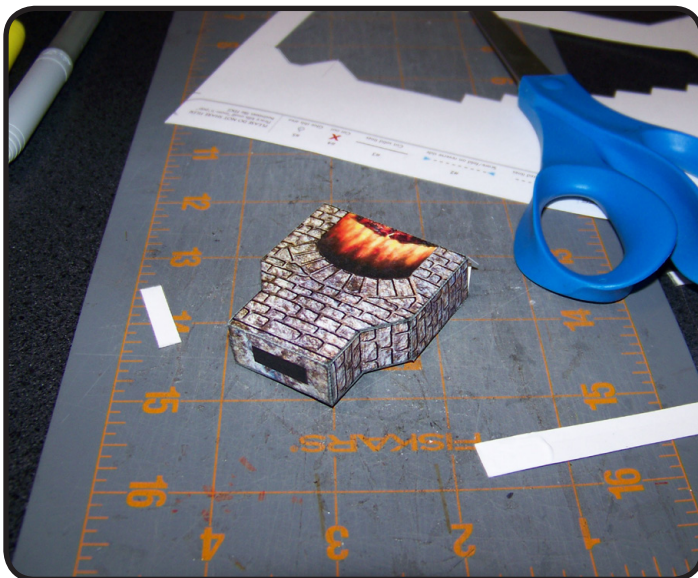
E-Z DUNGEONS



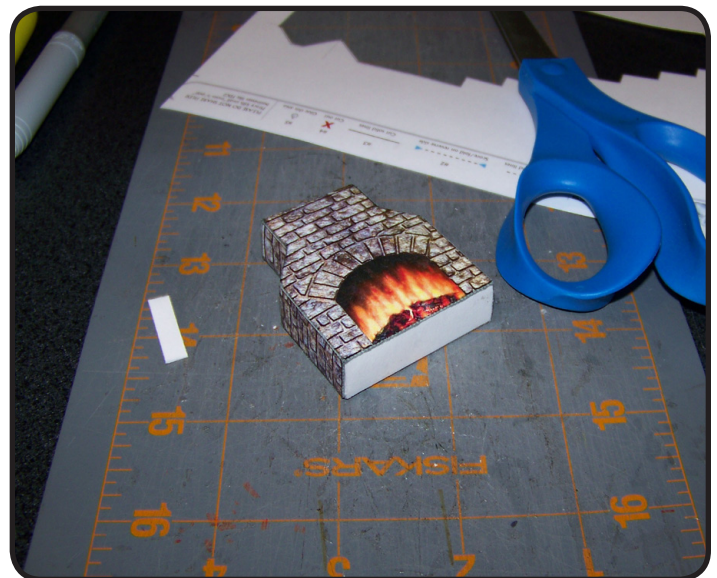
13: Glue the stabs on the opposite side.



14: Glue the rear side into place.



15: Glue the top flap.

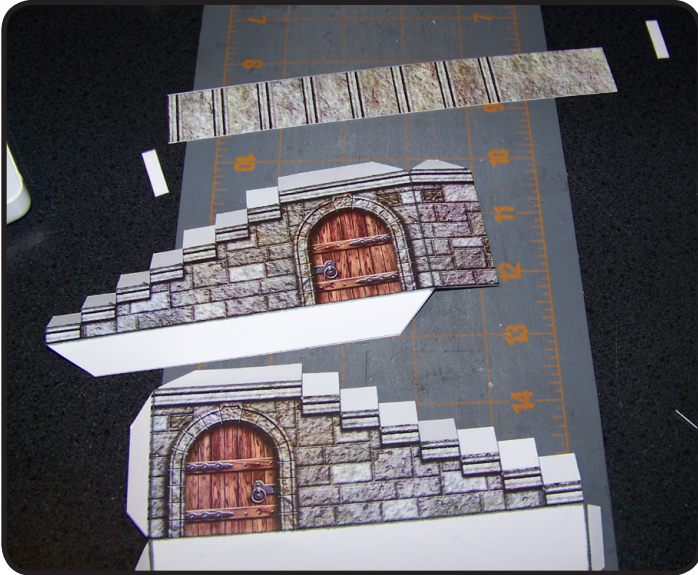


16: Glue the bottom flap.

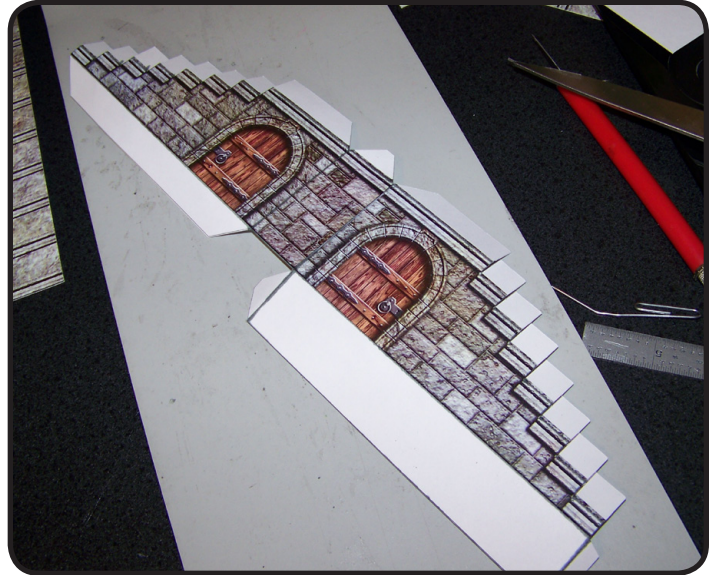
FAT DRAGON GAMES

E-Z DUNGEONS

Staircase



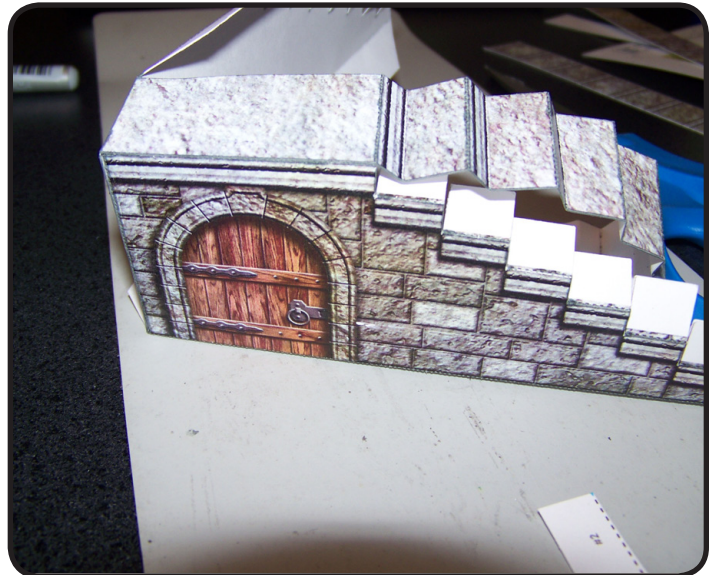
1: Cut, score and test fold the staircase as shown. Also edge with a gray marker at this time.



2: Glue the side walls together along their rear edges.

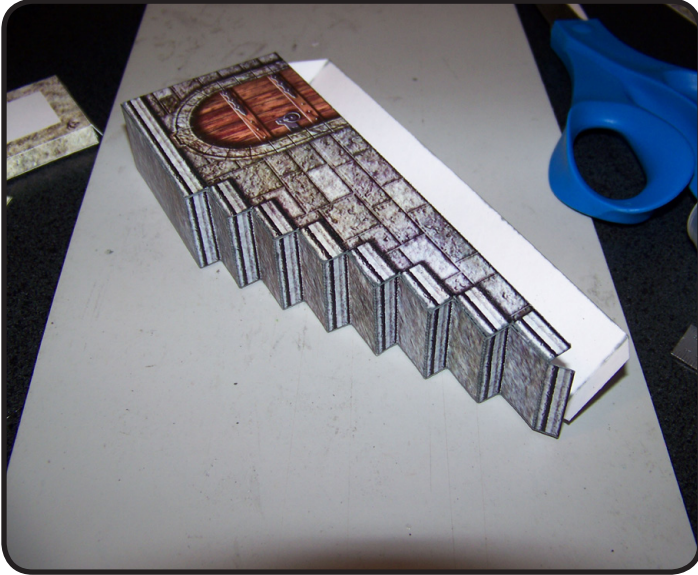


3: Glue the stair tread piece to the side walls.

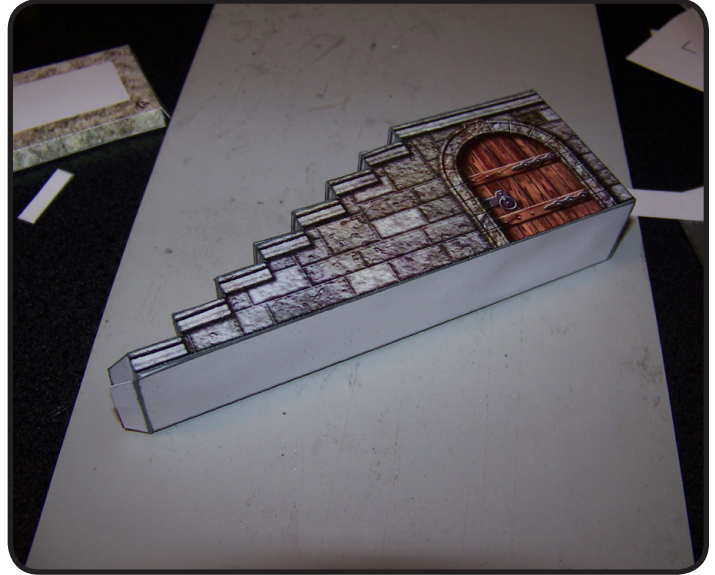


4: Begin gluing the upper most pair of tabs.

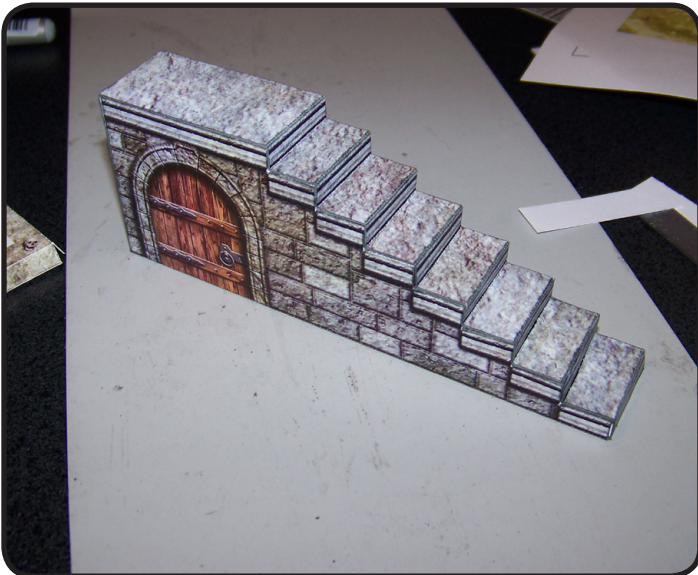
E-Z DUNGEONS



5: Continue down one set of tabs at a time to the bottom of the staircase.



6: Glue the bottom flap into place.



7: Finish by gluing the front end tab at the bottom of the stairs.

FAT DRAGON GAMES

E-Z DUNGEONS

Eye Beast



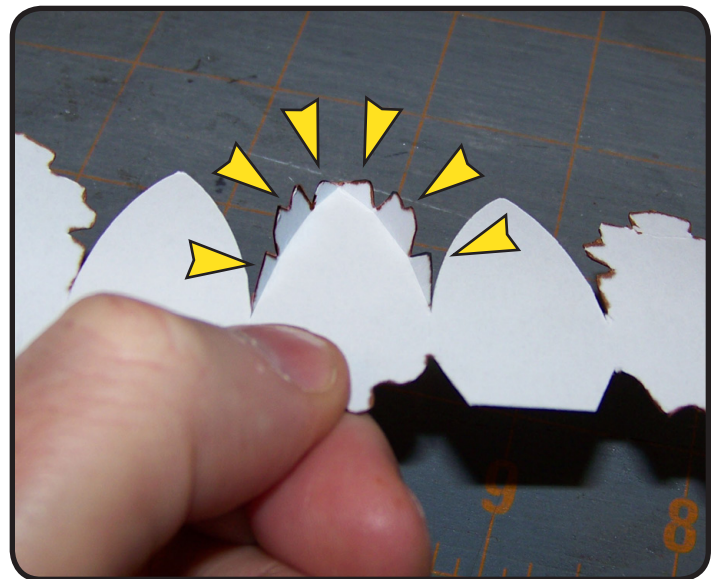
1: Cut out the eyes as one large piece as shown above.



2: Fold and glue in half, being careful not to glue the small glue tabs together at the bottom of each eye tentacle.

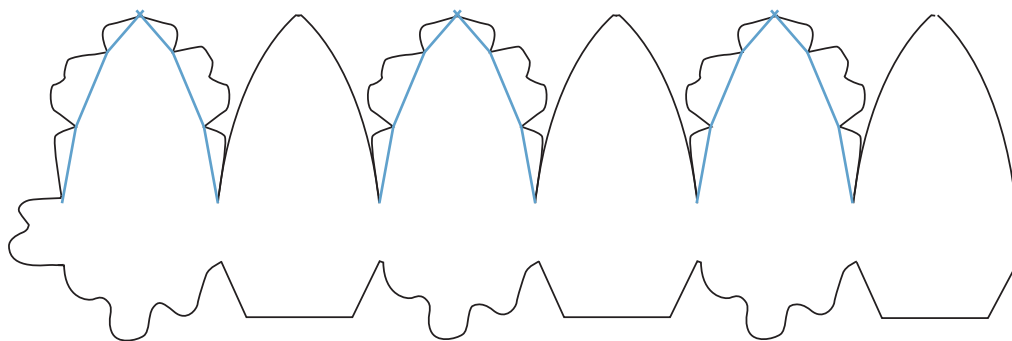


3: Cut out the upper and lower hemispheres of the beast's body.

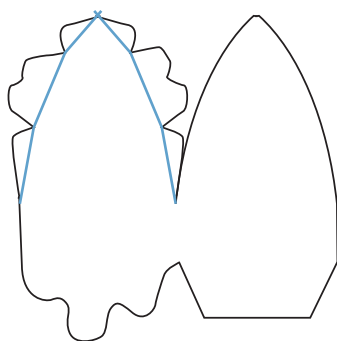


4: GENTLY fold each of the glue tabs as shown. DO NOT SCORE THESE! Simple fold each one by rolling it with your finger, trying to avoid actually creasing it. You want more of a curve than a fold. Do this for all 6 tabs on each 'lobe' that has tabs.

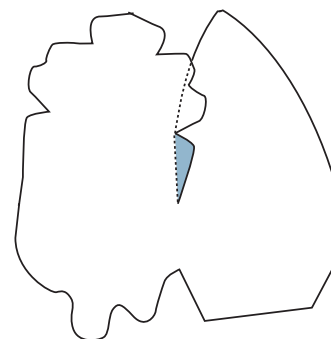
E-Z DUNGEONS



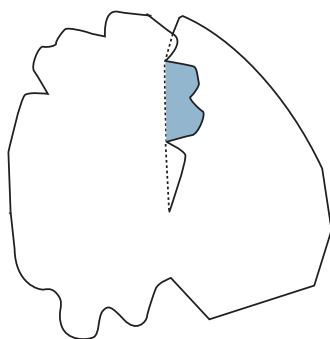
The blue lines show where you will gently fold each tab over.



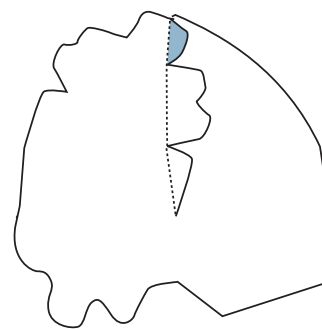
1: Here is an example of how to glue two adjacent lobes together. First, gently fold the glue tabs.



2: Begin by tucking the two lobes together, gluing the lower glue tab first and holding it tightly until dry.

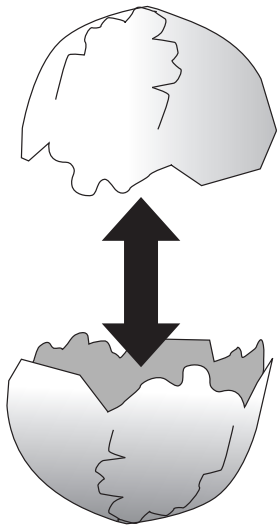


3: Glue the middle tab next.

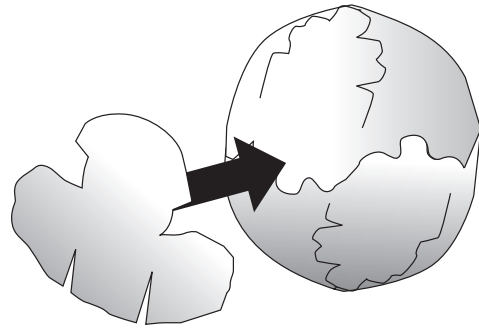


4: Finish by gluing the upper tab. You will need to hold this as it dries to keep the lobe ends tucked together.

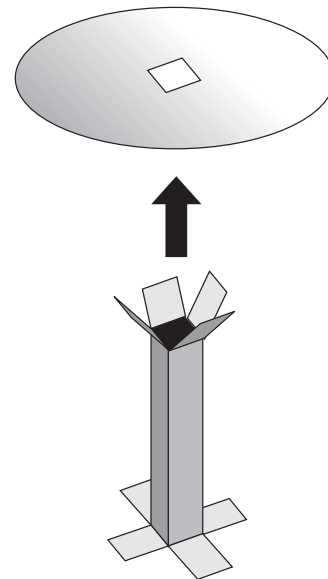
E-Z DUNGEONS



5: Glue the upper and lower body hemispheres together and allow to fully dry.



6: Glue the mouth and the eye piece to the sphere. Finish by gluing the individual eyes to the sphere.



6: Insert the mounting post through the bottom of the base, gluing the tabs to the underside of the disk, then glue the upper tabs to the bottom of the sphere.