

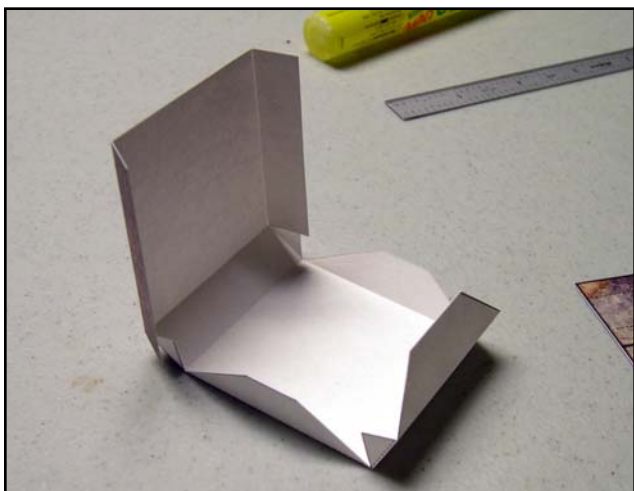
E-Z DUNGEONS



Thank you for purchasing E-Z DUNGEONS. We have made every attempt to design the models you have purchased to be as easy as possible to assemble. Yes, we realize there may be more efficient way of designing several of these pieces, but ease of assembly for the novice card modeler was our primary concern.

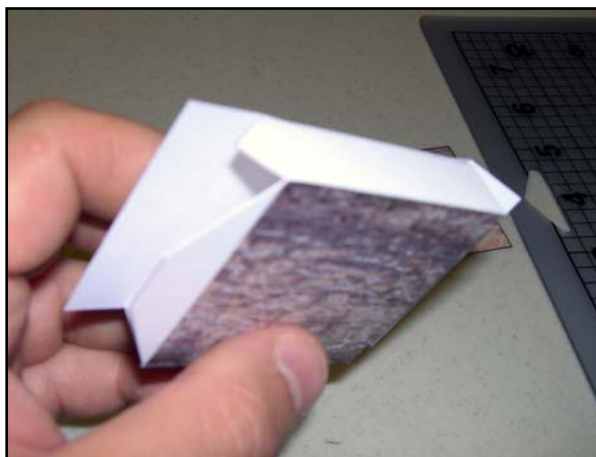
While white school glue (Elmers) will work on these models, this type of glue contains too much water to make really nice looking models (it warps the paper). We recommend a good quality glue stick or even better a liquid paper glue pen. We use UHU OFFICE PENS for our models-the applicator puts a small amount exactly where you want it and it has a non clog tip. You can get these from www.saunders-usa.com

All of the models shown in our photos have been mounted on black foam-core. This is cheap (about \$2.50 for a 20x30" sheet at discount stores). This will weight your pieces down so they don't easily move if the table is bumped.

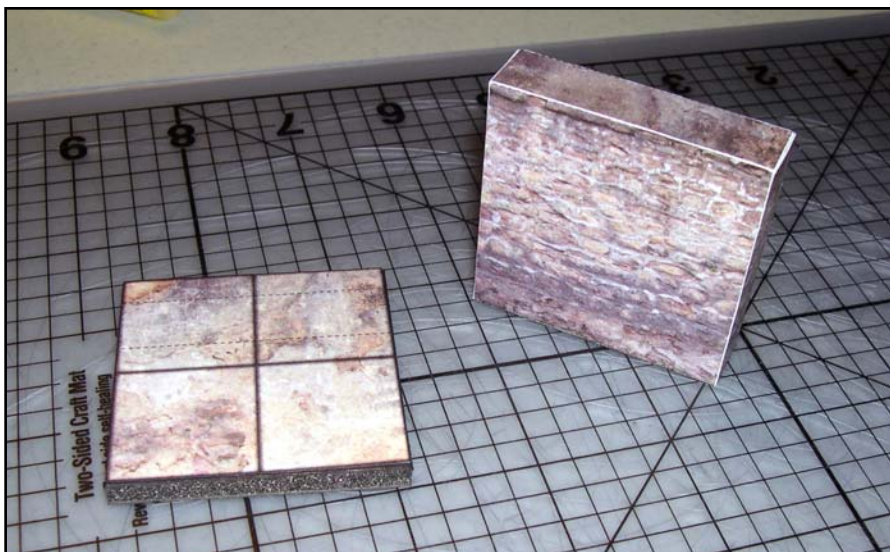


(LEFT) Begin with a basic wall (either 2" or 4" length).

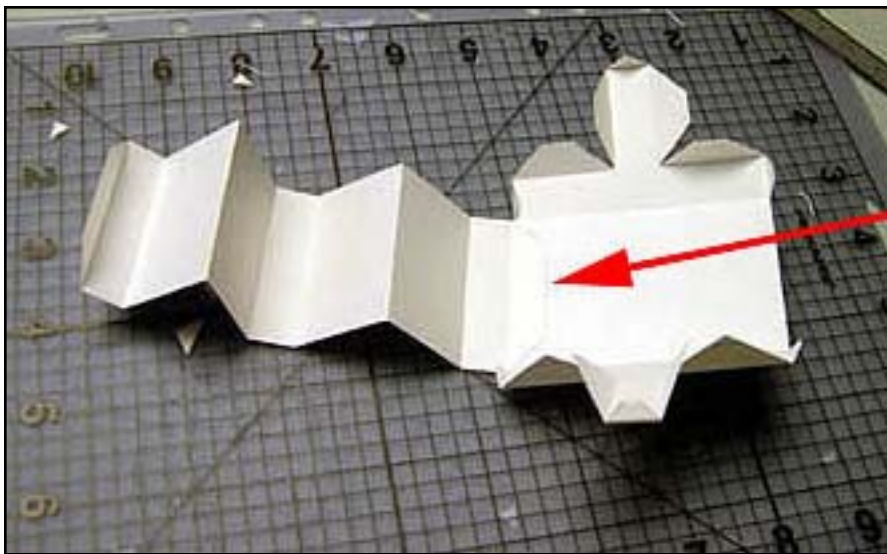
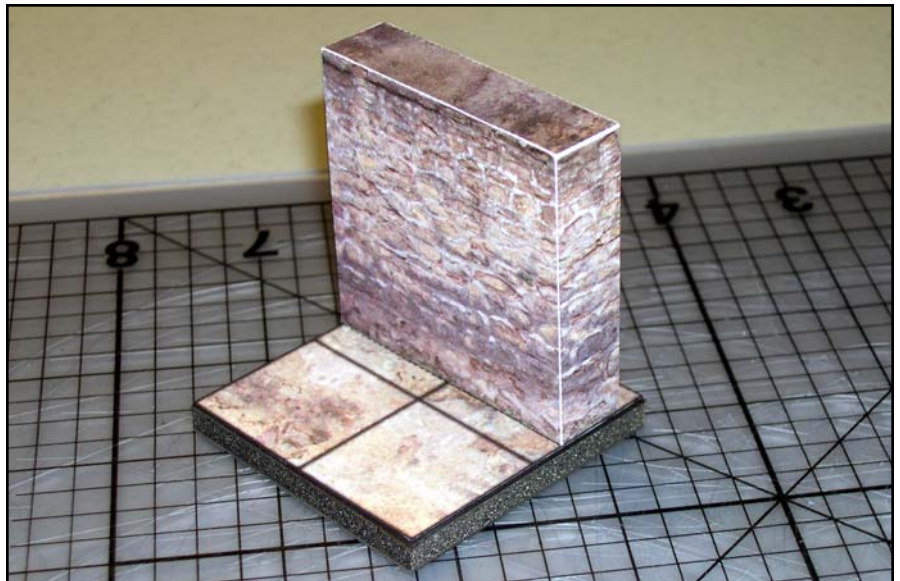
(Below) Glue the bottom edge tab first and let dry.



(RIGHT) Once the bottom tab is dry, glue the next two tabs. While these are drying you can glue the floor piece to a section of foam-core art board (we recommend using black foam-core).



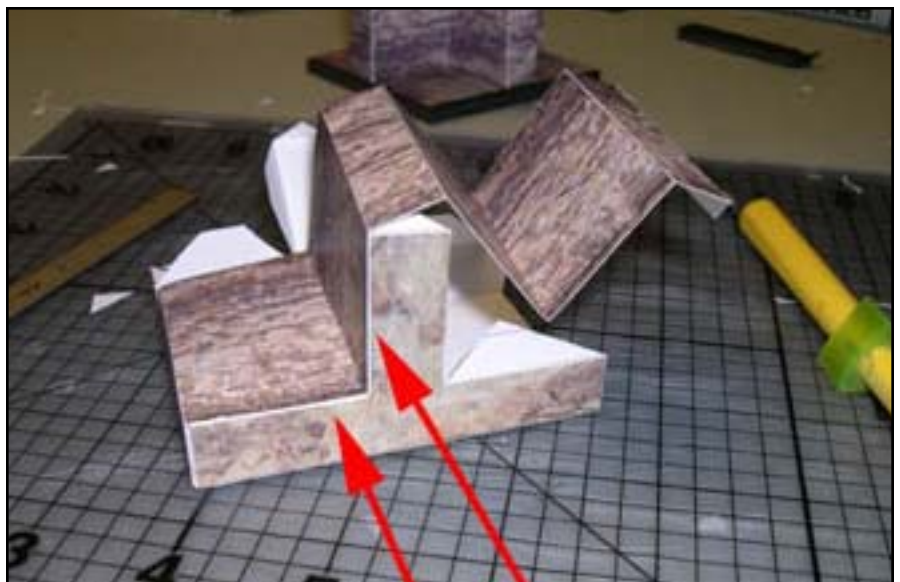
(RIGHT) When this and the wall section are dry glue together. You may also wish to edge the four sides of the floor piece with a black marker.



When assembling some of the more difficult shapes, we recommend you go slowly and glue only a flap or two at a time.

(LEFT) Start the 'T' corner model by gluing only one side tab and waiting for it to dry before proceeding.

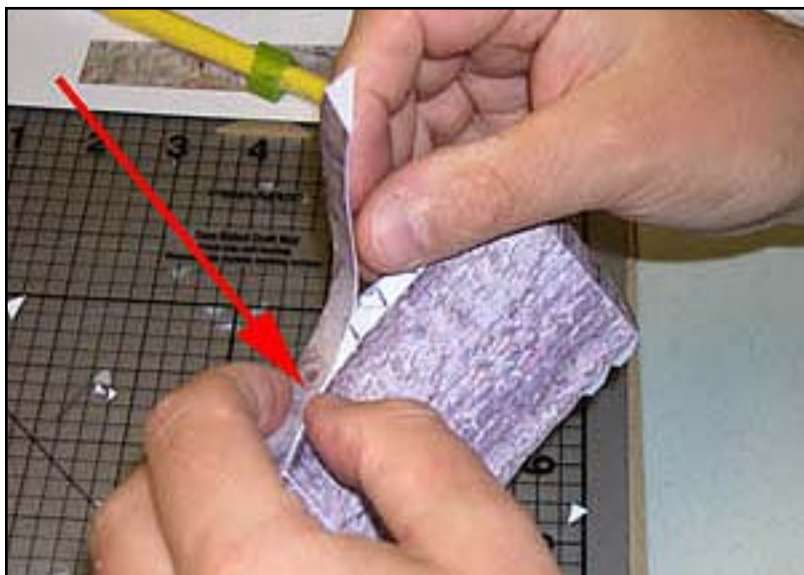
(RIGHT) Once the side tab is dry, glue the next two tabs. Once these are dry the remaining four tabs can be easily glued. It is quicker to work on several models at once allowing you to put one aside while a tab dries to work on another.





(LEFT) When making the curved wall pieces we recommend making a spacer out of foam core (use the top or bottom wall piece as a template). Glue the wall ends together and let dry. Then insert the foam-core spacer into the wall. This will give it the curved shape and keep this form while you glue the upper and lower pieces to it.

(RIGHT) Once the form has inserted, begin gluing the TOP piece. Only glue a couple of tabs at a time and wait for them to dry. Once the top is done you should have no problem gluing the bottom in only a couple of steps as the wall will be holding its shape better with the spacer inside and the top glued in place.



FAT DRAGON GAMES
www.fatdragongames.com
 ©2005 Fat Dragon Games