

Ancient Worlds *Column* *Circle*



PAPER MODEL

ASSEMBLY INSTRUCTIONS

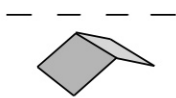
- Column circle -

Materials:

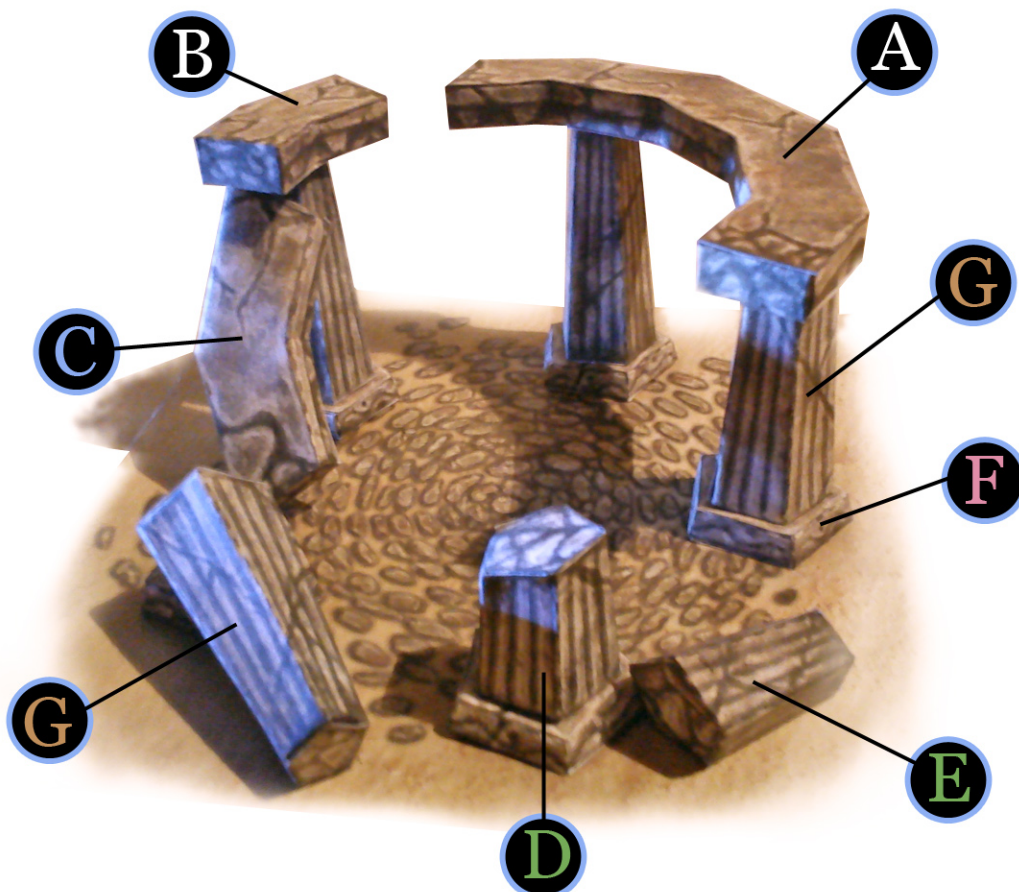
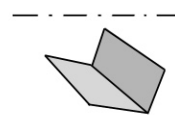
- Metal-edged ruler
- Butter knife
- Scissors or craft knife
- Cutting mat (optional)
- Multipurpose glue

1. Choose a style with the layers, print out all pages and allow to dry. Use 180-200 Gram paper.
2. Using scissors or a craft knife and cutting mat, cut out all pieces along solid lines.
3. Score all the pieces: Using a ruler as a guide, run the back side of a butter knife firmly along all dashed and dotted lines.
4. Fold all pieces along score lines, using the folding key below as a reference.

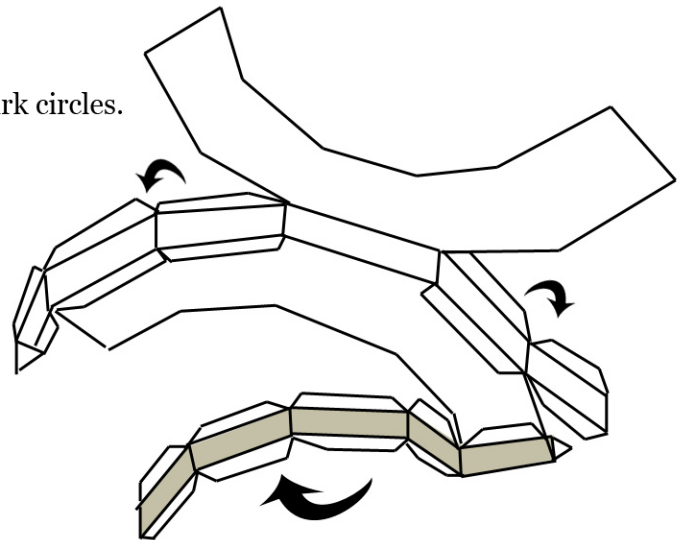
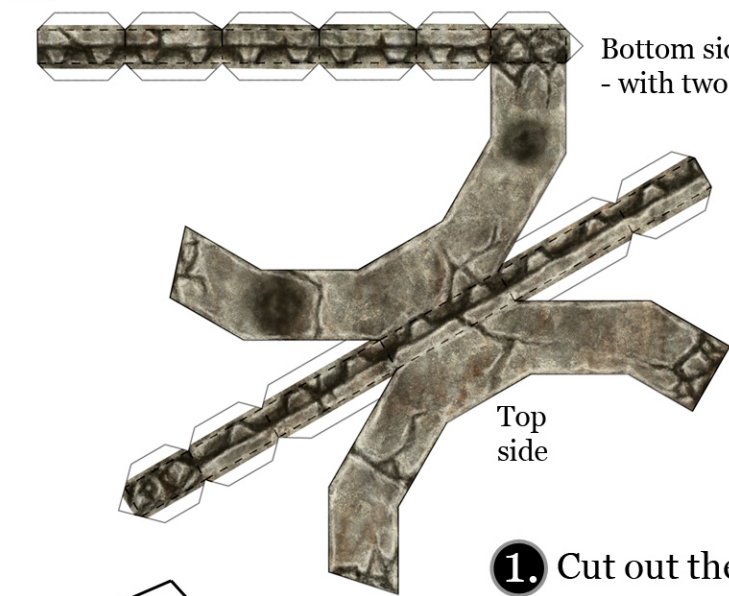
Mountain Fold



Valley Fold



A Top of the ruin - A

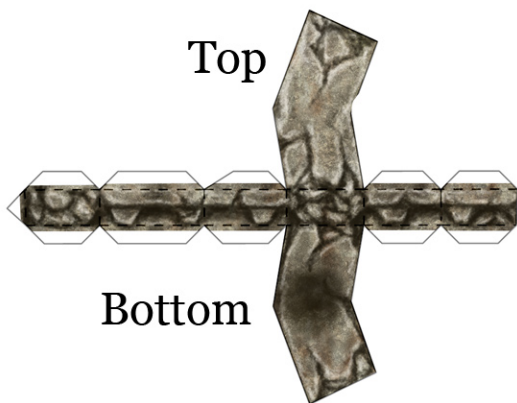


1. Cut out the pieces.

2. Fold the edges,
and glue the tabs
to the bottom side.

3. Glue the top side
of the ruin to the other tabs.

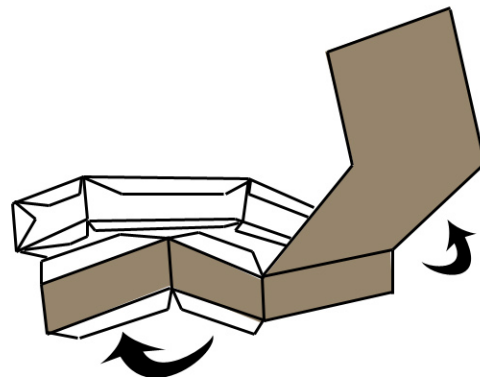
B Top of the ruin - B



1. Cut out the pieces.

2. Fold the edges.

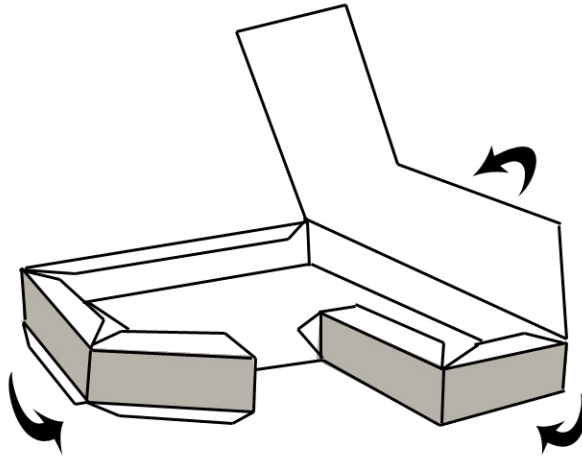
3. Glue the tabs to the sides.



C Broken top of the circle



1. Cut out the pieces.
2. Fold the edges.
3. Glue the tabs to the sides.



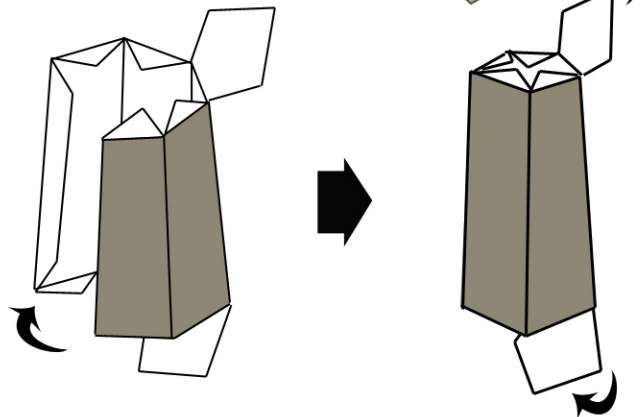
D Base of the broken pillar

E Other piece of the broken pillar

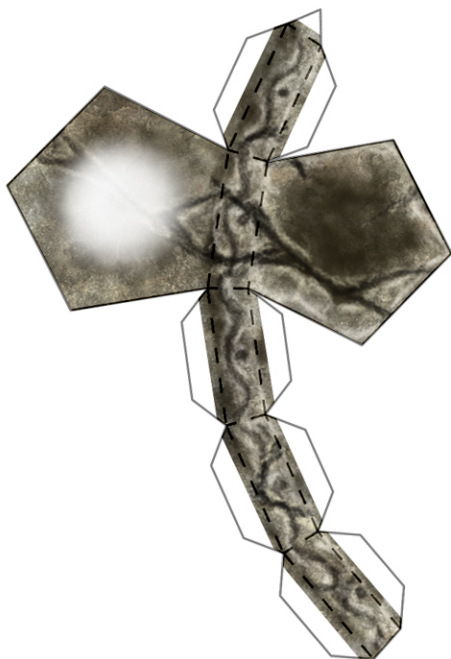
G Pillars



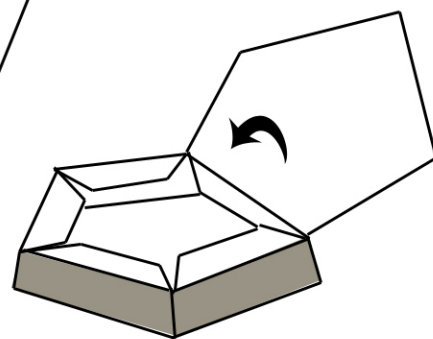
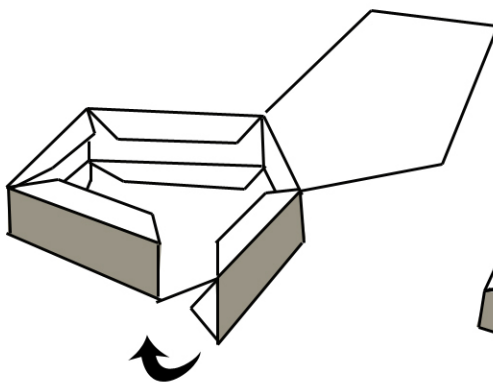
1. Cut out the pieces.
2. Fold the edges.
3. Glue the tabs to the sides.



F Base of the pillars

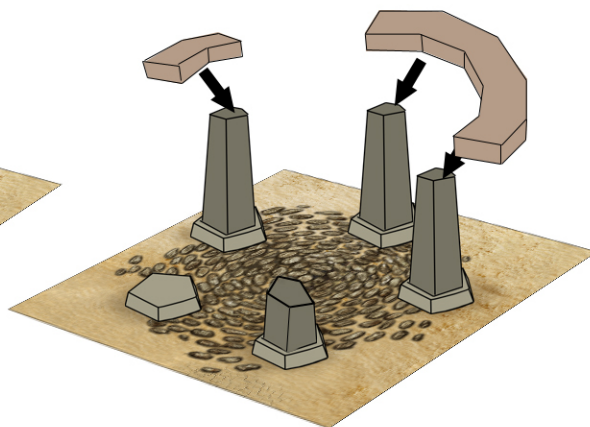
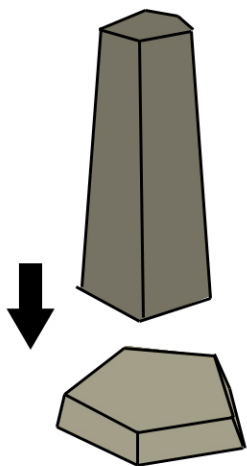


1. Cut out the pieces.
2. Fold the edges.
3. Glue the tabs to the sides.



Final assembly

1. Glue the pieces "F", "D" (broken) and "G" together.
2. Glue the pillars to the base (cover the designated white spots).
3. Glue the top of the pillars to the dark circles.



Use the picture on page 1 to place your pillars. The other pieces (C, D, & E) can be placed wherever you see fit.

You're done!

We wish you good gaming!

